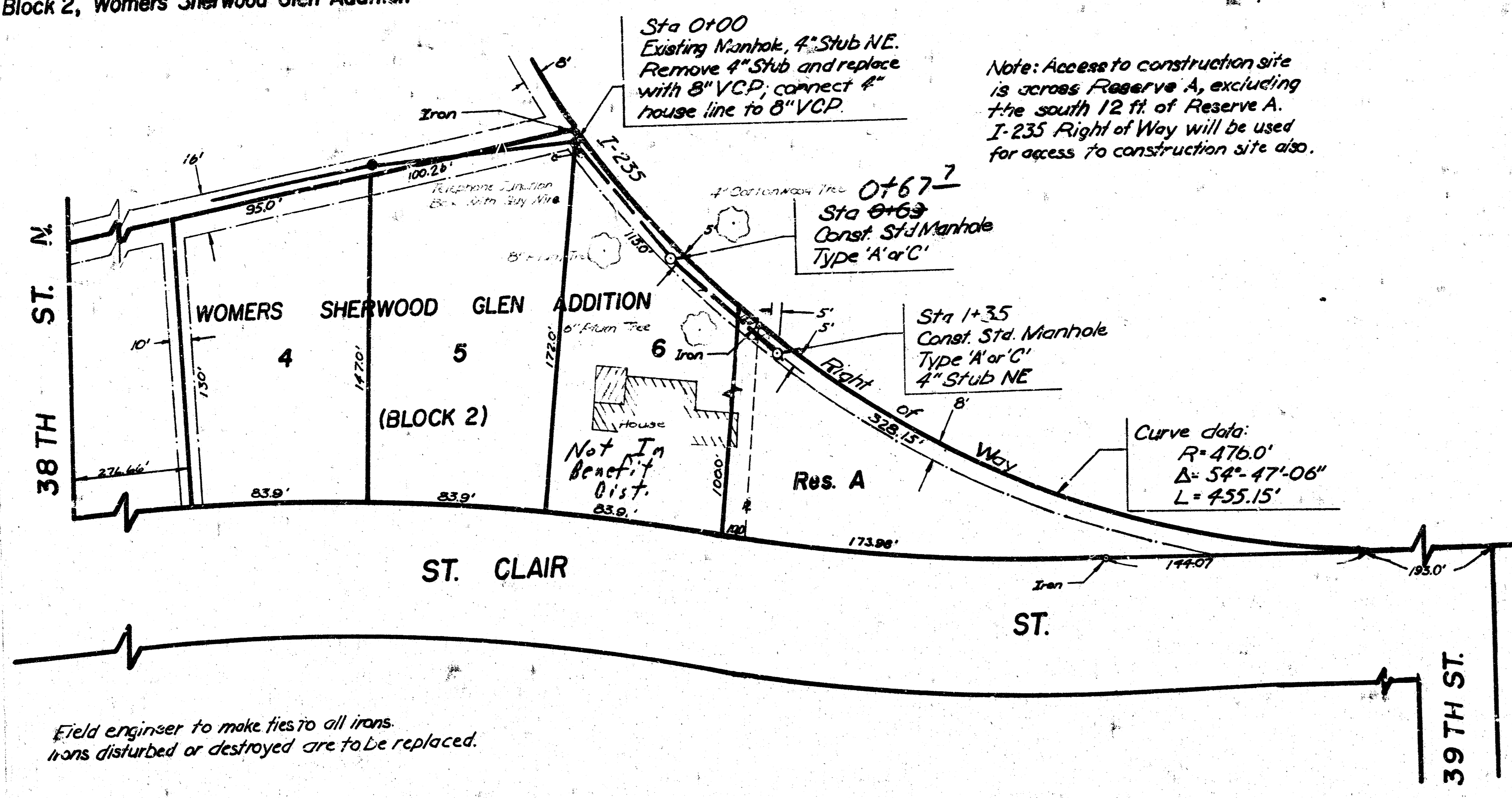


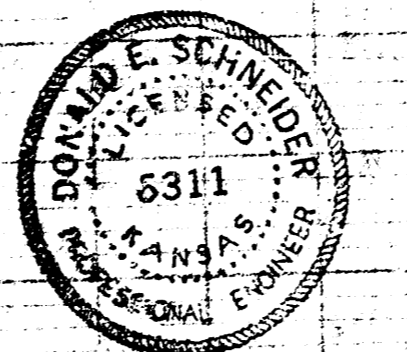
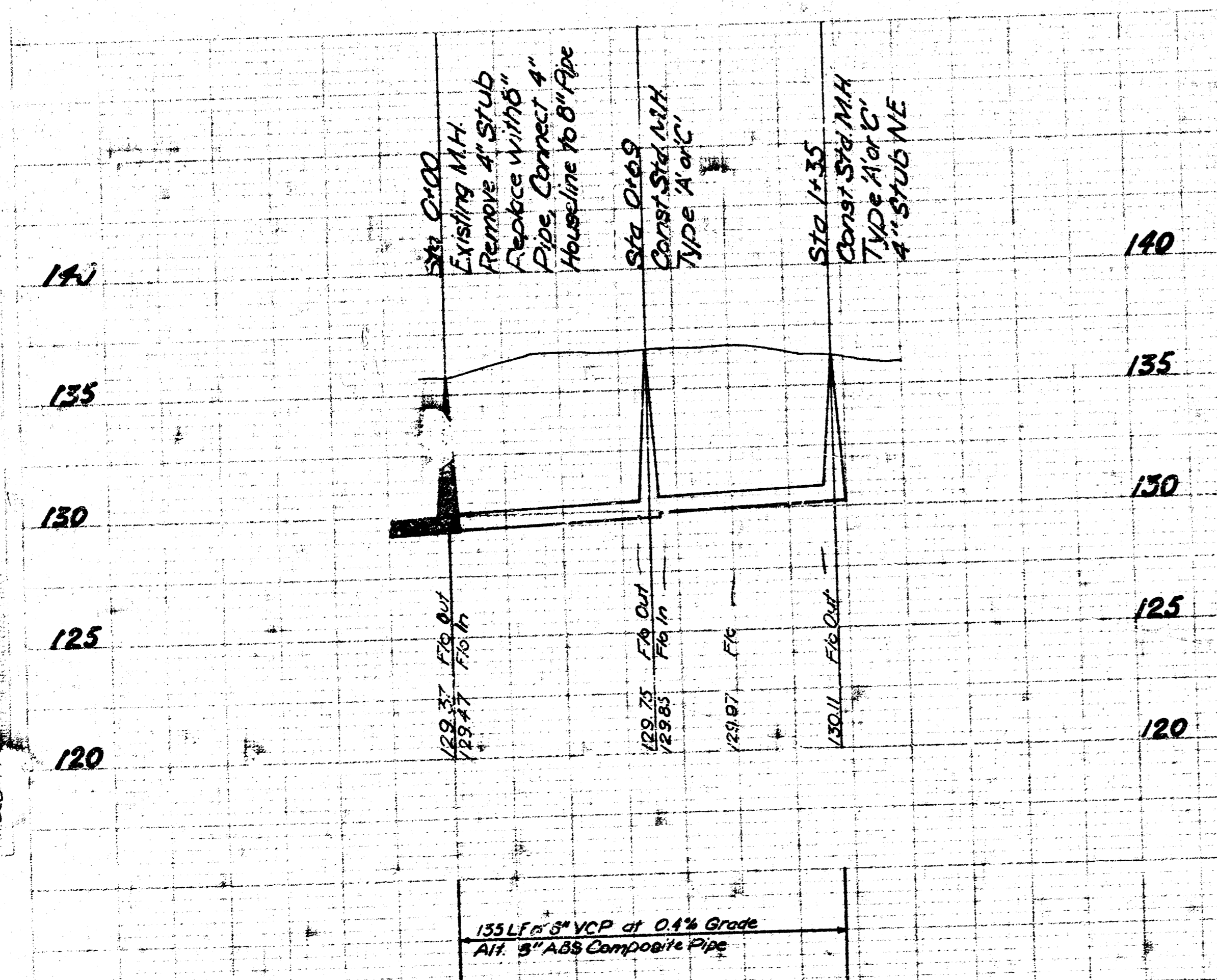
BM 133.39 City Std. Disc 35' East & 52' South of C. of Amidon & 37th St. North
 BM 135.05 R.R. Spike on west side of power pole on NE corner of 39th St. North & Charles
 BM 137.49 R.R. Spike on northwest side of power pole 32' South & 6.3' East of NW corner of Lot 6,
 Block 2, Womers Sherwood Glen Addition

Plan Scale 1" = 40'
 Profile Scale 1" = 40' Horz.
 1" = 5' Vert.



Note: Access to construction site is across Reserve A, excluding the south 12 ft. of Reserve A. I-235 Right of Way will be used for access to construction site also.

Field engineer to make ties to all irons.
 Irons disturbed or destroyed are to be replaced.



As built 4-8-77
LAT 28, MAIN 21, S.S. NO. 22
 CITY OF WICHITA, KANSAS
 R.W. LINN CITY ENGINEER
 DATE: Jan-1977 PROJECT NO: DBKL576065

PLATE 1-SINGLE PLAN AND PROFILE FULL LINE
 1/4\"/>