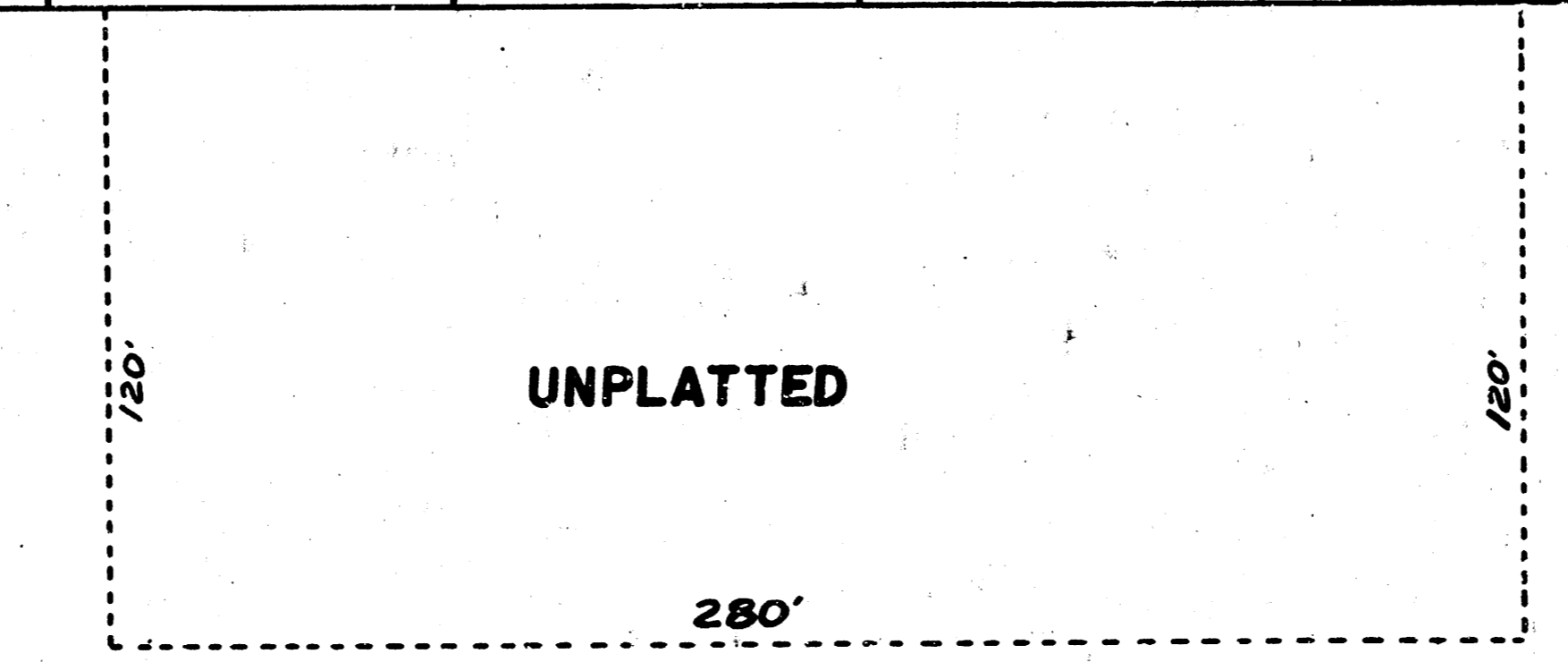
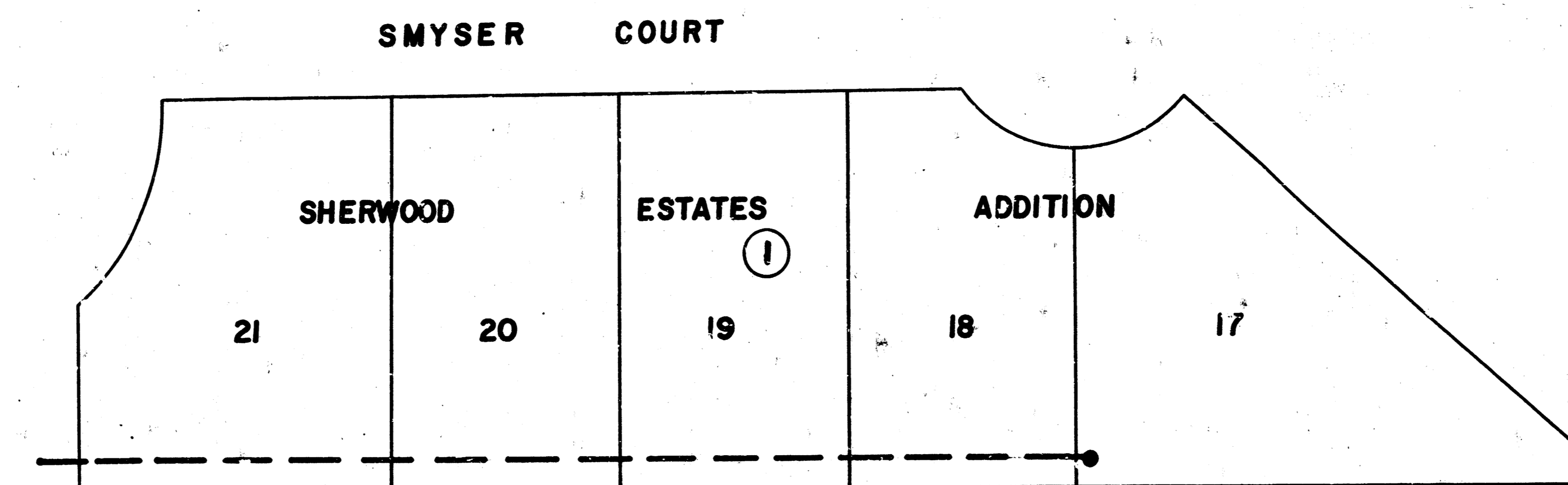
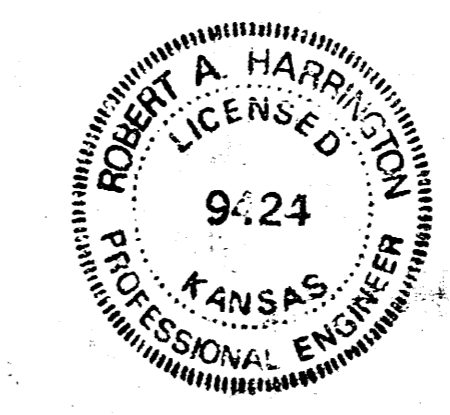


LATERAL 32 - MAIN 21 - S.S. NO. 22
468-76-245-80985-000-000-001



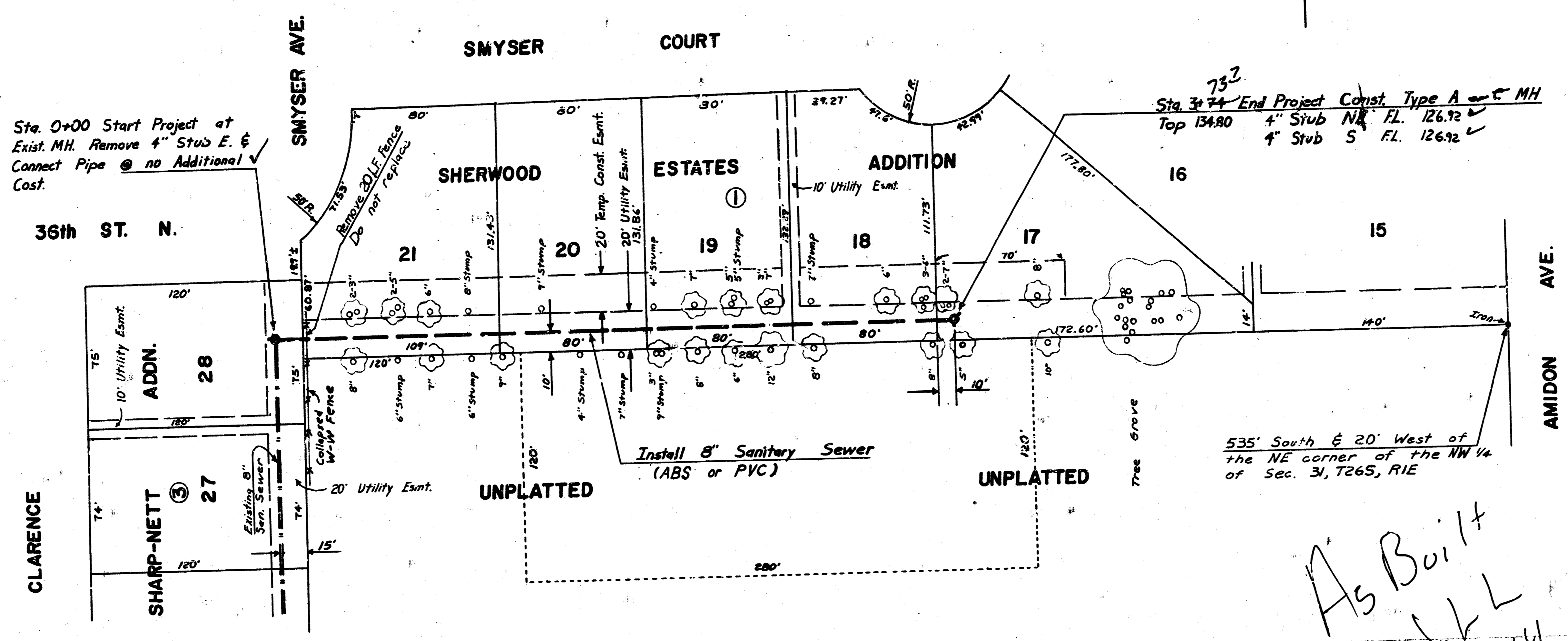
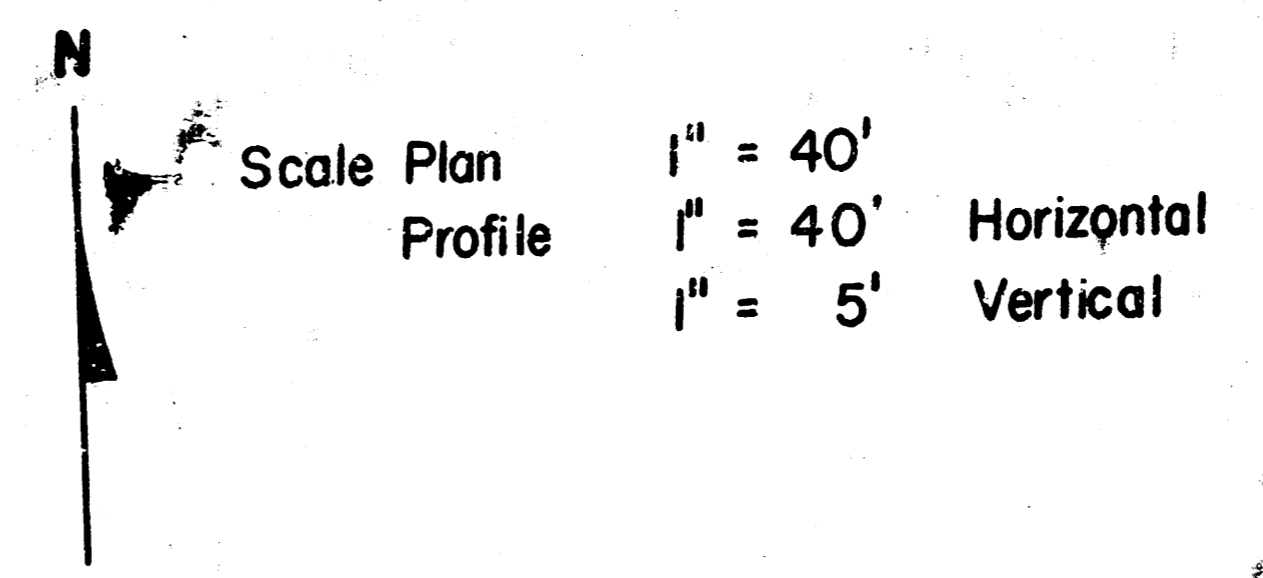
Improvement District Map

*As Built
S.H.L
2-84*



CITY OF WICHITA
M. E. LINDEBAK CITY ENGINEER
LANDCO ENGINEERING CONSULTANT ENGINEER
 1/2

B.M. Elevation 132.90
"a" Cut on TC S-end Return SE-corner
Smyser Ave. & Smyser Ct.



General Notes

- 1) All Block Corners, Control Points and Property Irons Shown on Plans Will be Protected. If Removed During Construction, Contractor will have them Replaced By a Licensed Engineer or Land Surveyor at his Expense.
- 2) Trees within Utility Esm't or Temporary Construction Esm't may be Removed at Contractor's Convenience. Cost of Tree Removal shall not be paid for Directly, but shall be Incidental to the Other Pay Items of Work

535' South & 20' West of the NE corner of the NW 1/4 of Sec. 31, T26S, R1E

As Built
J L
2-84

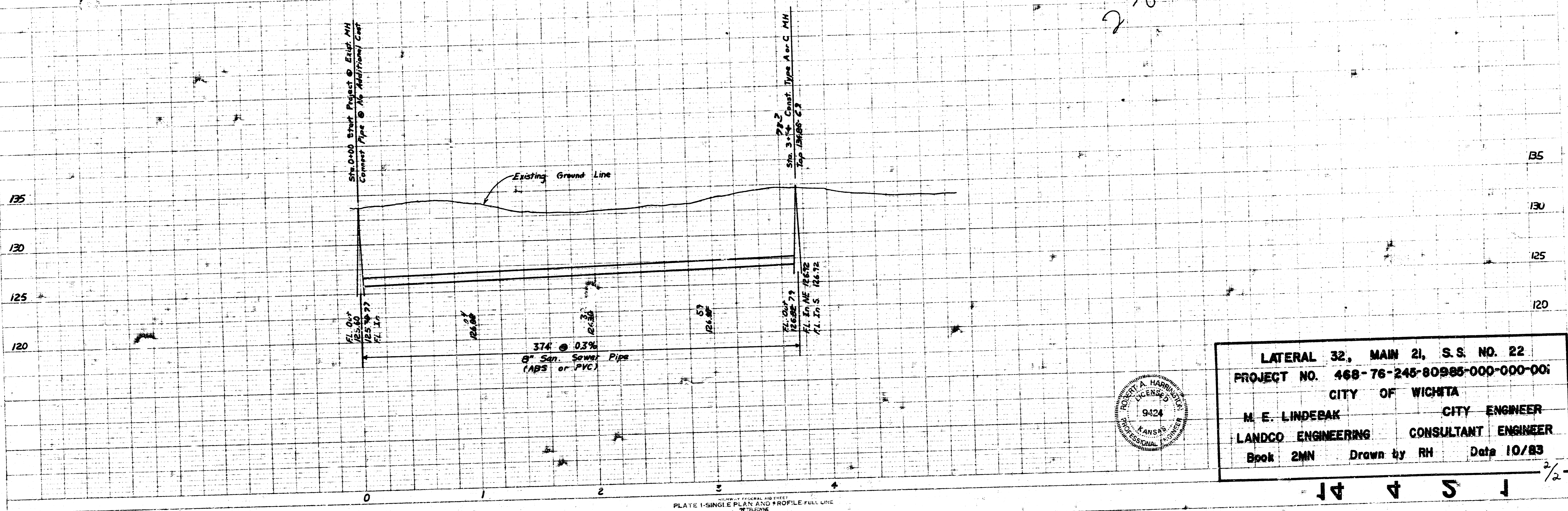
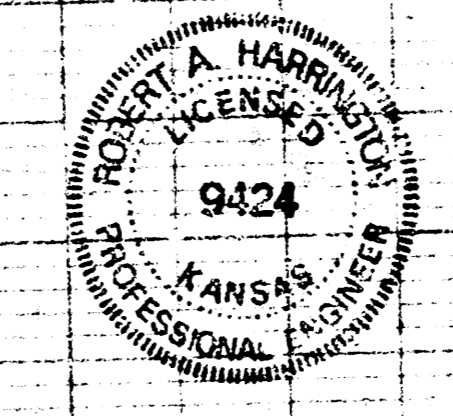


PLATE 1-SINGLE PLAN AND PROFILE FULL LINE



LATERAL 32, MAIN 21, S.S. NO. 22
 PROJECT NO. 468-76-245-80985-000-000
 CITY OF WICHITA
 M. E. LINDEBAK CITY ENGINEER
 LANDCO ENGINEERING CONSULTANT ENGINEER
 Book 2MN Drawn by RH Date 10/83