

LATERAL 39 MAIN 21, SANITARY SEWER NO. 22

PROJ. NO. 468-82606

INDEX NO. 742791

CITY OF WICHITA, KANSAS

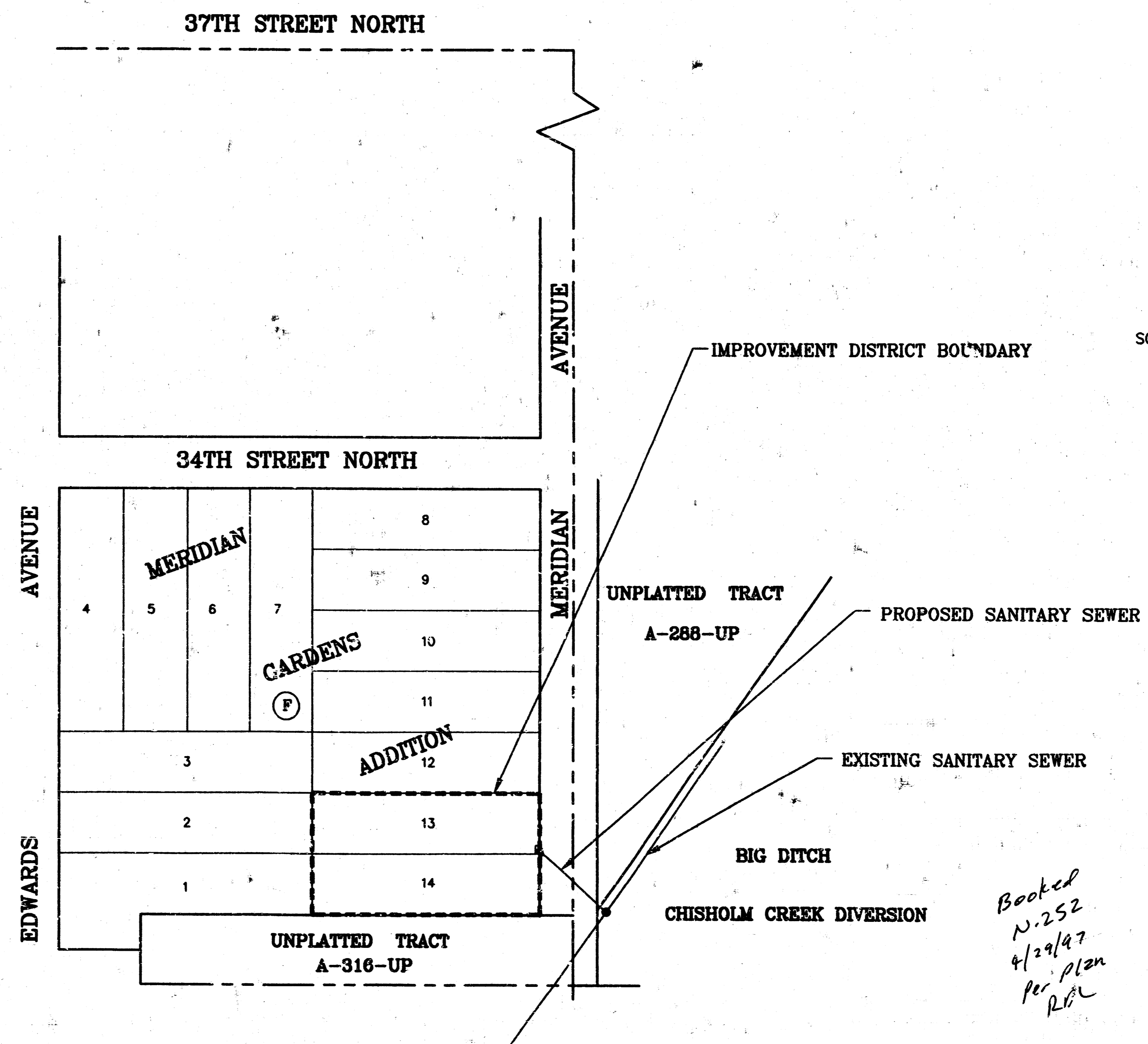
M. E. LINDBAK - CITY ENGINEER

GENERAL NOTES:

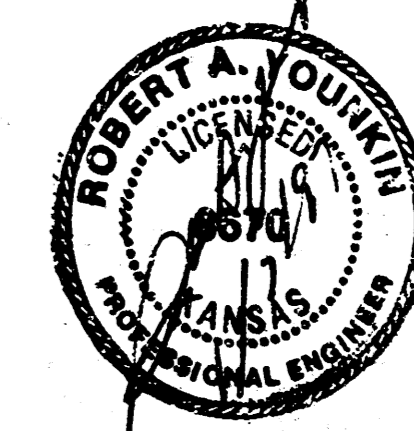
1. ALL CONSTRUCTION AND MATERIAL TO COMPLY WITH CITY OF WICHITA SPECIFICATIONS AND STANDARDS.
2. THE CONTRACTOR SHALL NOTIFY THE UTILITY SERVICE COMPANIES TO FLAG THEIR UNDERGROUND LINES AND REQUEST ANY OVERHEAD POLE/LINE ADJUSTMENTS 48 HOURS PRIOR TO CONSTRUCTION.
KANSAS ONE-CALL 1-800-344-7233
3. THE UNDERGROUND UTILITY SERVICE LINES AND OVERHEAD UTILITY POLE LINES ARE TO BE ADJUSTED AS NECESSARY BY OTHERS PRIOR TO CONSTRUCTION UNLESS THE PLANS SPECIFICALLY CALL FOR THEIR ADJUSTMENT BY THE CONTRACTOR. EXISTING UTILITIES AND THEIR LOCATION, AS SHOWN ON THE PLANS, REPRESENT THE BEST INFORMATION OBTAINABLE FOR DESIGN. LOCATION INFORMATION HAS BEEN OBTAINED FROM THE VARIOUS UTILITY COMPANIES AND IS EITHER FROM COMPANY RECORDED DRAWINGS OR COMPANY PROVIDED FIELD LOCATIONS. THE CONTRACTOR WILL BE REQUIRED TO WORK AROUND EXISTING UTILITIES WITHIN THE RIGHT-OF-WAY WHICH DO NOT CONFLICT WITH PROPOSED CONSTRUCTION.
4. THE CONTRACTOR SHALL GIVE ALL PROPERTY OWNERS AND/OR TENANTS DIRECTLY AFFECTED BY THE CONSTRUCTION OF THIS PROJECT A MINIMUM OF FIVE (5) DAYS' ADVANCE WRITTEN NOTICE PRIOR TO START OF CONSTRUCTION.
5. ANY TREE OR SHRUB REMOVAL MUST BE APPROVED BY THE CITY ENGINEER.
6. THE CONTRACTOR SHOULD EXAMINE THE CONSTRUCTION SITE PRIOR TO BIDDING AND BE SATISFIED AS TO THE WORK SHOWN FOR COMPLETION.
7. ANY FENCE REMOVED DURING CONSTRUCTION MUST BE REPLACED AND RESTORED TO ORIGINAL CONDITION.

INDEX OF SHEETS

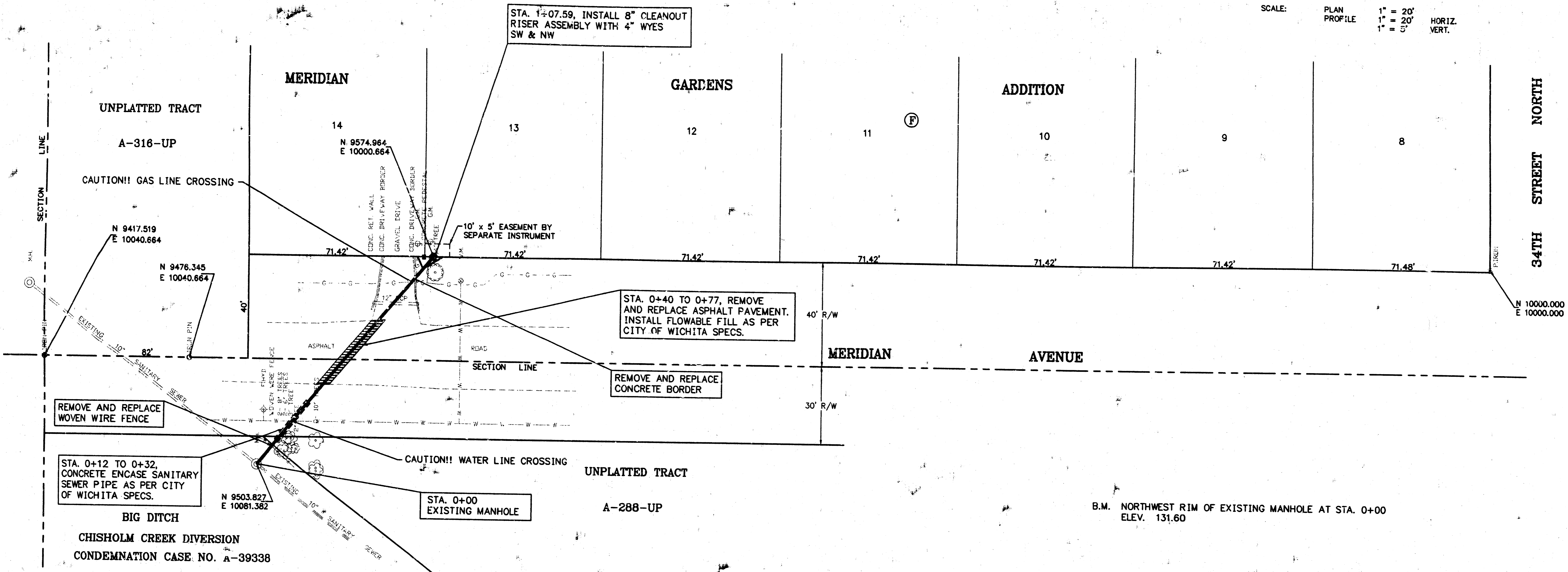
SHEET 1 - TITLE SHEET
SHEET 2 - PLAN/PROFILE



*Booked
N. 252
4/29/97
per plan
RLC*



SCALE: PLAN PROFILE 1" = 20' 1" = 20' 1" = 5' HORIZ. VERT.



STA. 0+12 TO 0+32, CONCRETE ENCASE SANITARY SEWER PIPE AS PER CITY OF WICHITA SPECS.

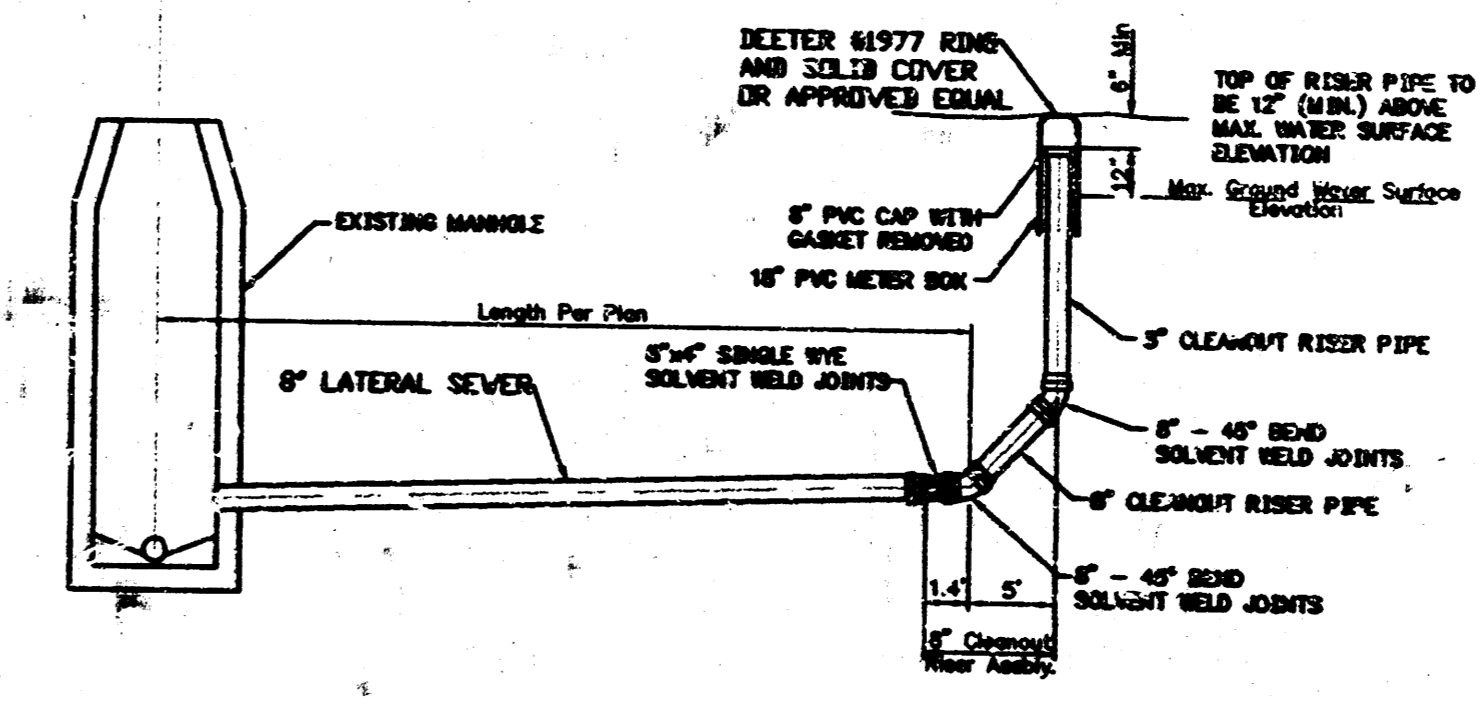
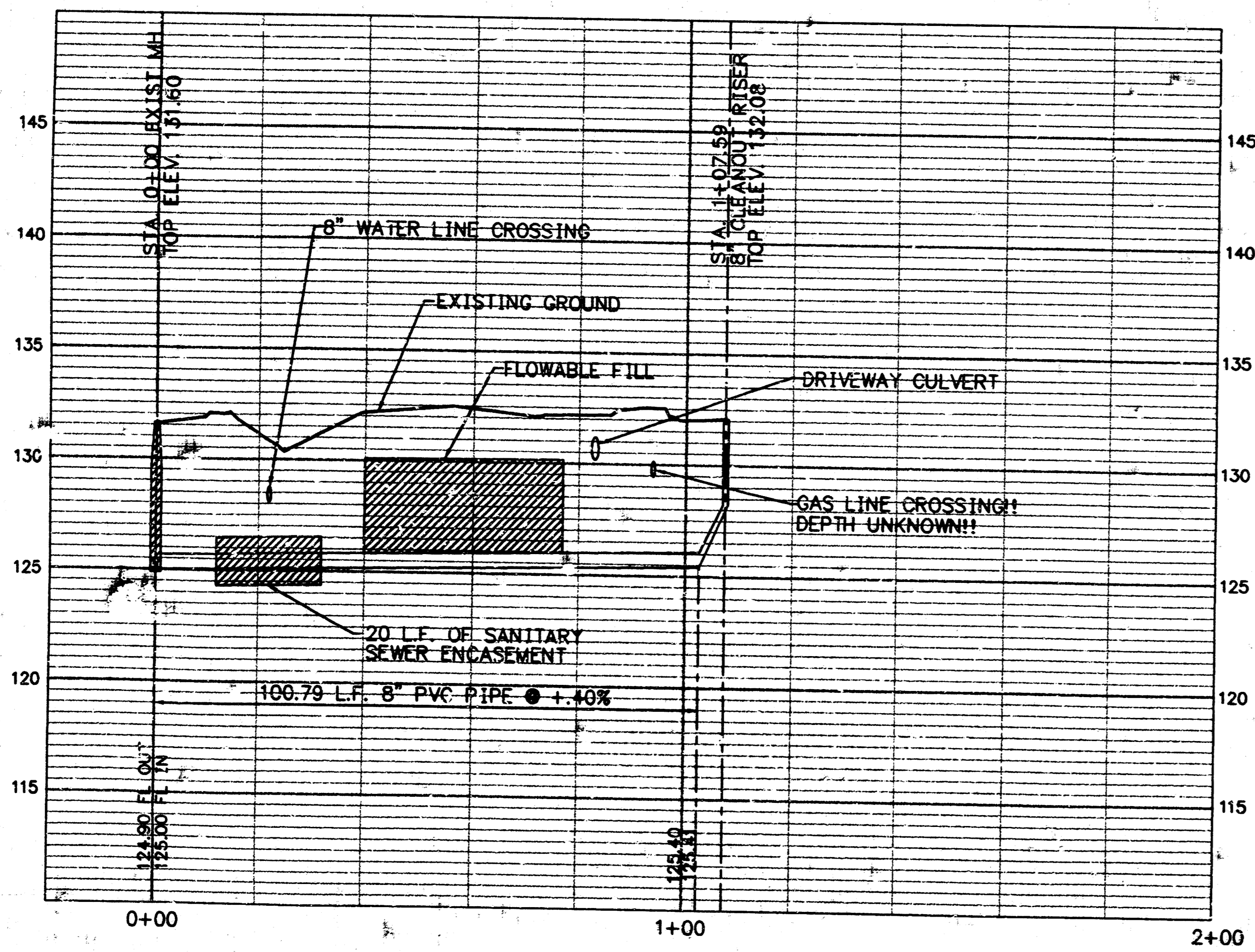
STA. 0+00 EXISTING MANHOLE

STA. 0+40 TO 0+77, REMOVE AND REPLACE ASPHALT PAVEMENT. INSTALL FLOWABLE FILL AS PER CITY OF WICHITA SPECS.

STA. 1+07.59, INSTALL 8" CLEANOUT RISER ASSEMBLY WITH 4" WYES SW & NW

B.M. NORTHWEST RIM OF EXISTING MANHOLE AT STA. 0+00 ELEV. 131.60

BIG DITCH
CHISHOLM CREEK DIVERSION
CONDEMNATION CASE NO. A-39338



8" CLEANOUT RISER ASSEMBLY DETAIL

PROJ. NO. 468-82606
INDEX NO. 742791
DRAWN BY JANICE K. BRIGGS

14-1-14