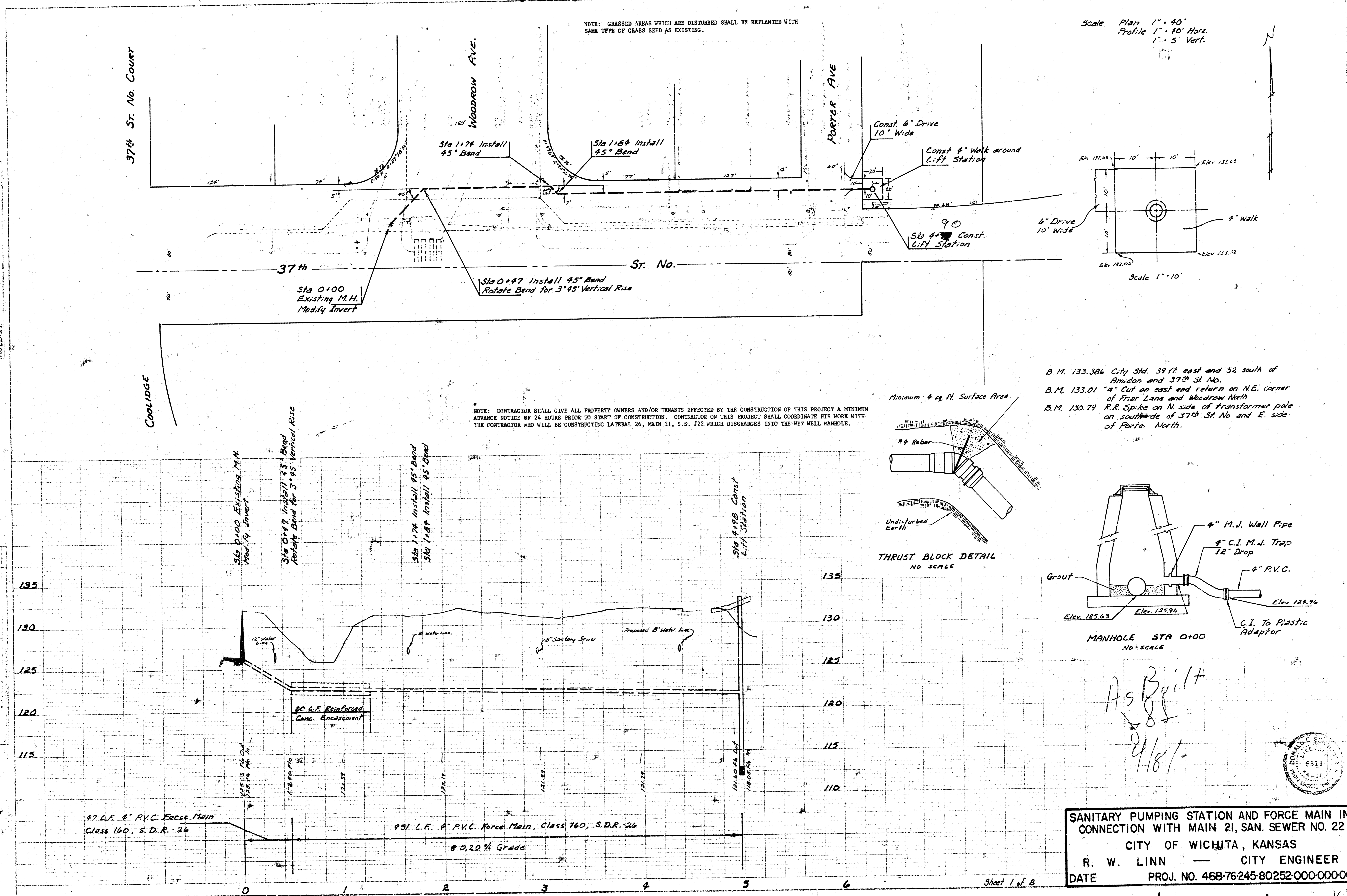
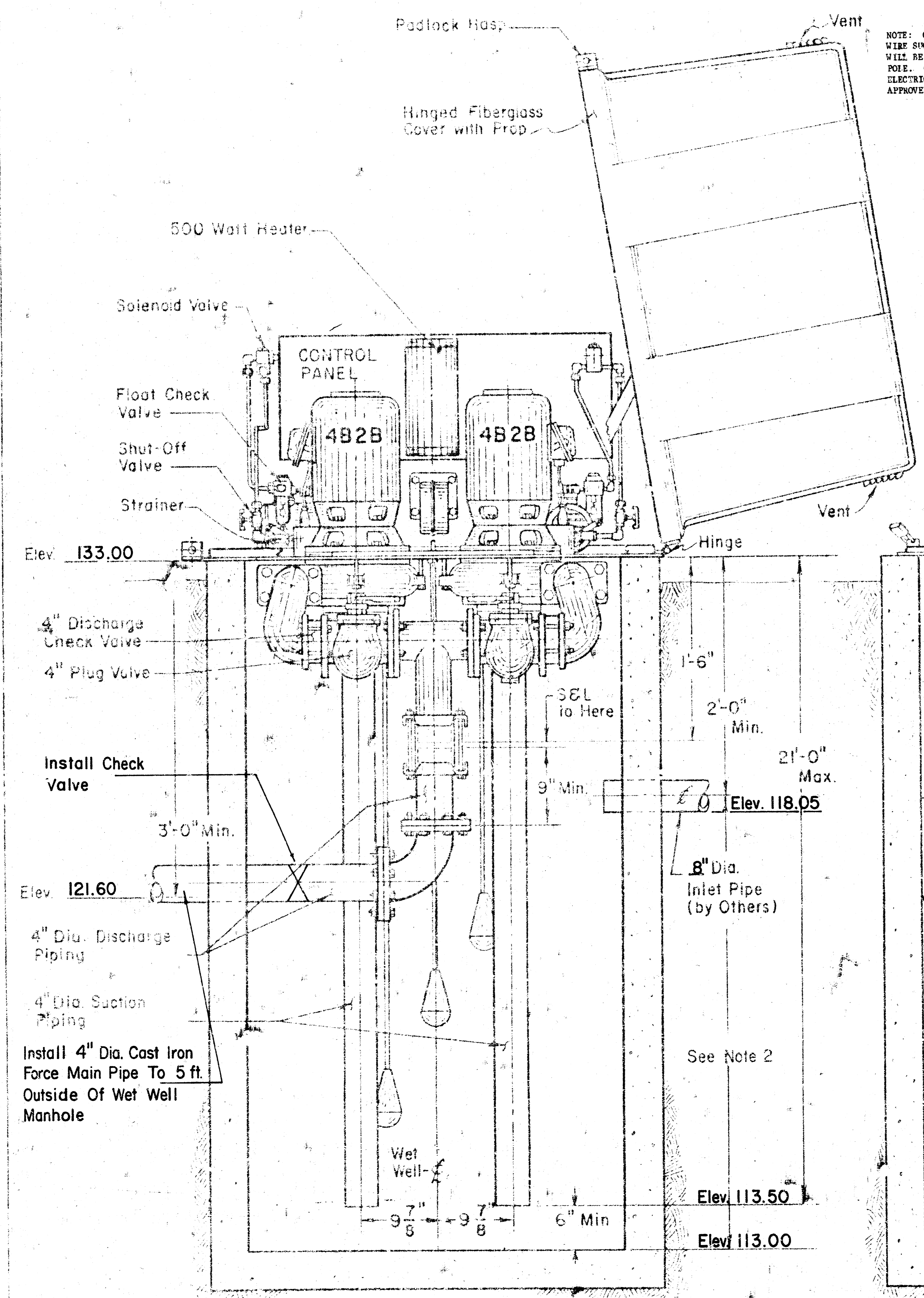


PLAN  
 DATE: 10/27/10  
 DRAWN BY: J. Z. Ziemke  
 CHECKED BY: J. Z. Ziemke  
 PROJECT: SANITARY PUMPING STATION AND FORCE MAIN IN CONNECTION WITH MAIN 21, SAN. SEWER NO. 22  
 SHEET: 1 OF 2

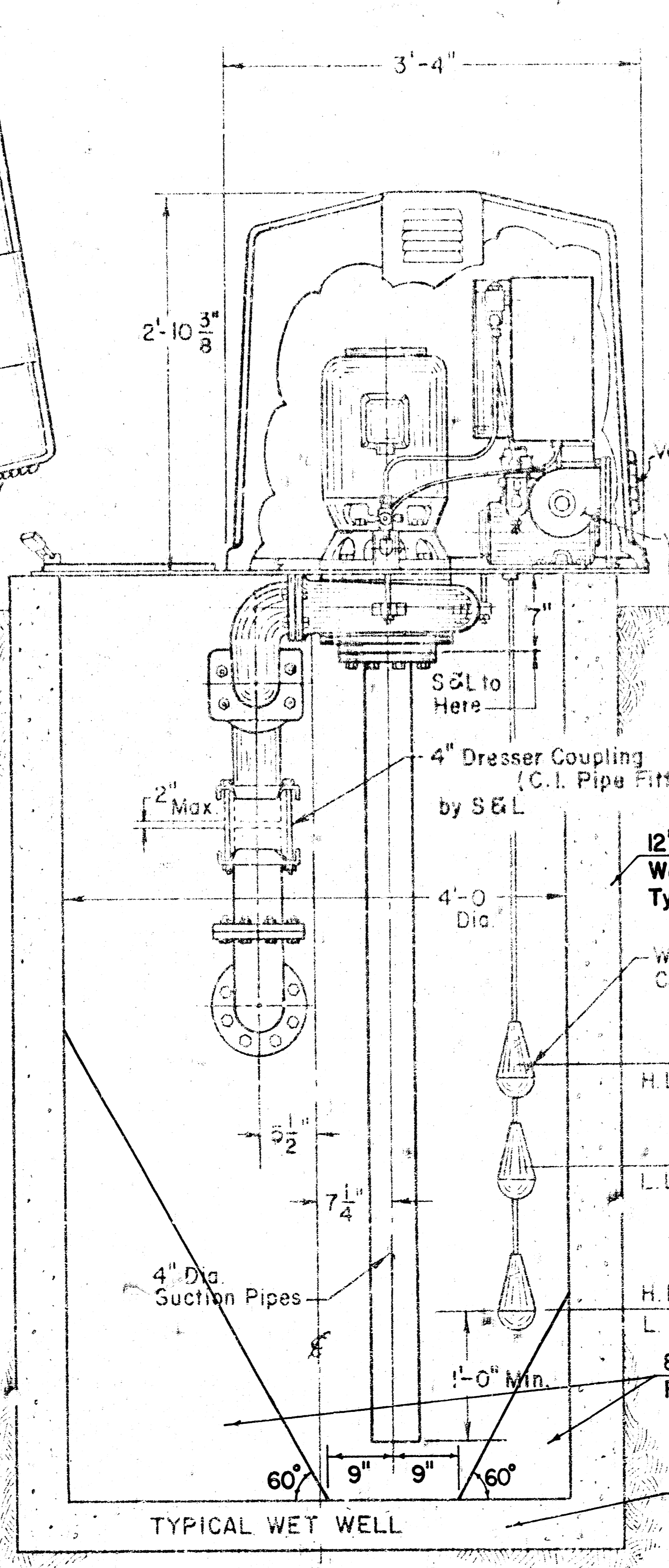
PROFILE  
 DATE: 10/27/10  
 DRAWN BY: J. Z. Ziemke  
 CHECKED BY: J. Z. Ziemke  
 PROJECT: SANITARY PUMPING STATION AND FORCE MAIN IN CONNECTION WITH MAIN 21, SAN. SEWER NO. 22  
 SHEET: 1 OF 2



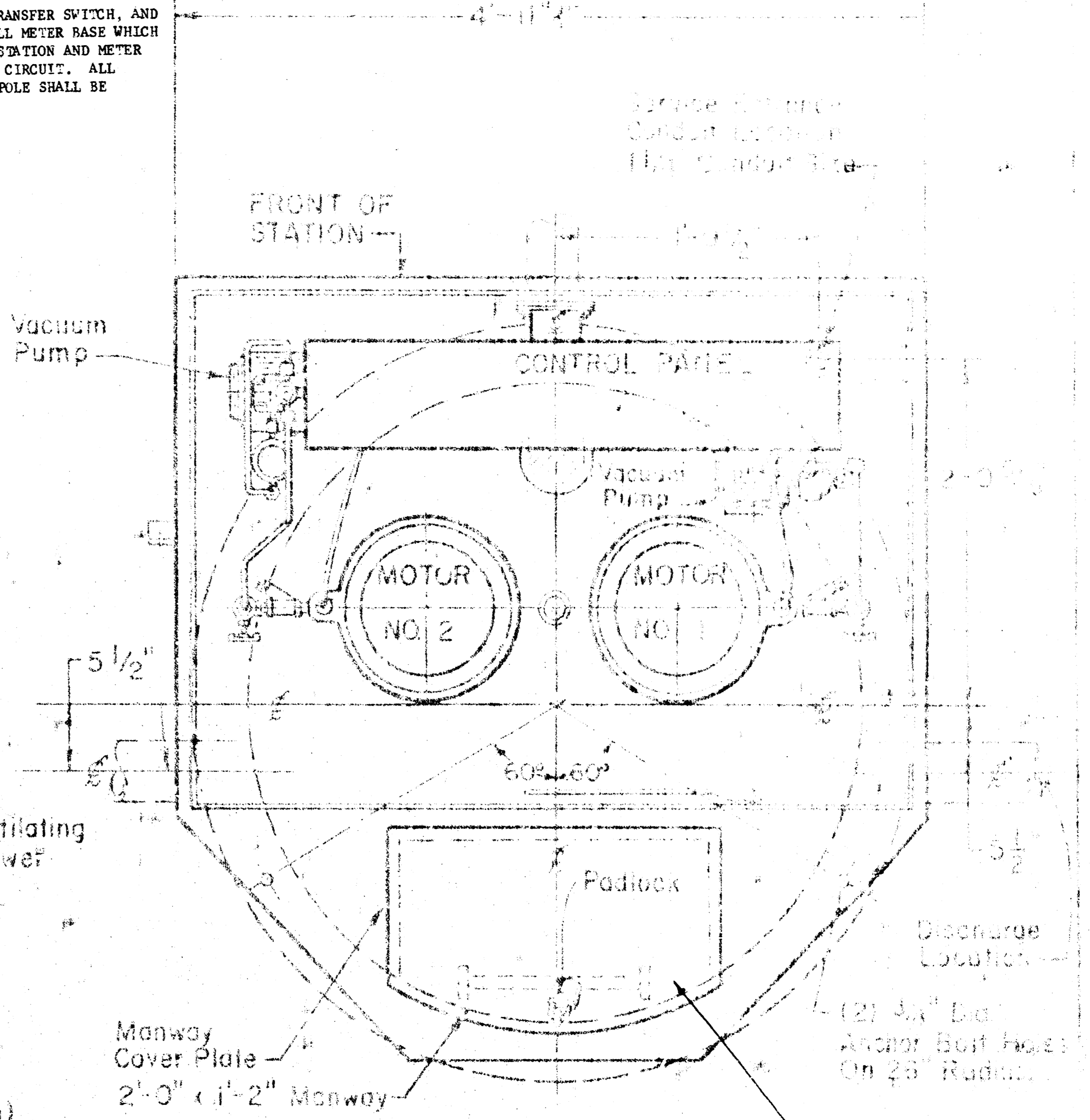
NOTE: CONTRACTOR SHALL FURNISH AND INSTALL METER POLE, DISCONNECT SWITCH, CONDUIT, WEATHERHEAD, TRANSFER SWITCH, AND WIRE SUCH TO FACILITATE CONNECTION TO POWER SUPPLY OUTSIDE OF WEATHERHEAD. CONTRACTOR SHALL INSTALL METER BASE WHICH WILL BE FURNISHED BY THE POWER COMPANY. TWO UNDERGROUND CONDUITS SHALL BE INSTALLED BETWEEN LIFT STATION AND METER POLE. ONE CONDUIT SHALL BE 1" D. FOR POWER SUPPLY. THE OTHER CONDUIT SHALL BE 3/4" D. FOR ALARM CIRCUIT. ALL ELECTRICAL INSTALLATIONS AND WIRING SHALL CONFORM TO THE CITY OF WICHITA CODE. LOCATION OF METER POLE SHALL BE APPROVED BY THE POWER COMPANY AND THE ENGINEER.



SECTIONAL ELEVATION



CROSS SECTION



PLAN VIEW  
MACHINERY CHAMBER  
(COVER DELETED FOR CLARITY)

Manway Opening Shall Be Installed On North Side of Lift Station

NOTES:

1. Maximum Capacity - 300 G.P.M.
2. Allow One Minute Cycle Time, Based On Wet Well Capacity of 94 Gal. Per Foot
3. If End of Discharge Line is Below Elevation of Discharge Line of Point of Leading Wet Well, Consult Factory.

DRAWING NO. 86 B 101  
("D" SIZE DWG. 86 Q 104)

DESIGNED BY	ENGINEER	CHECKED BY	DATE
DRAWN BY	DATE	APPROVED BY	DATE
SCALE	PROJECT	SHEET	TOTAL
WET-Well MOUNTED SEWAGE PUMP LIFT STATION			