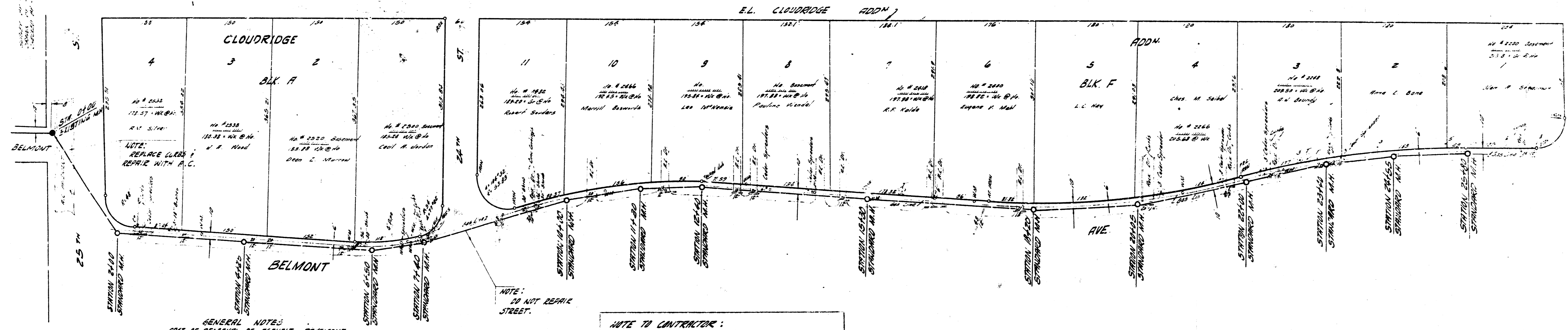


PLAN SCALE 1" = 80'
PROFILE SCALE 1" = 80' HOR., 1" = 4' VERT.

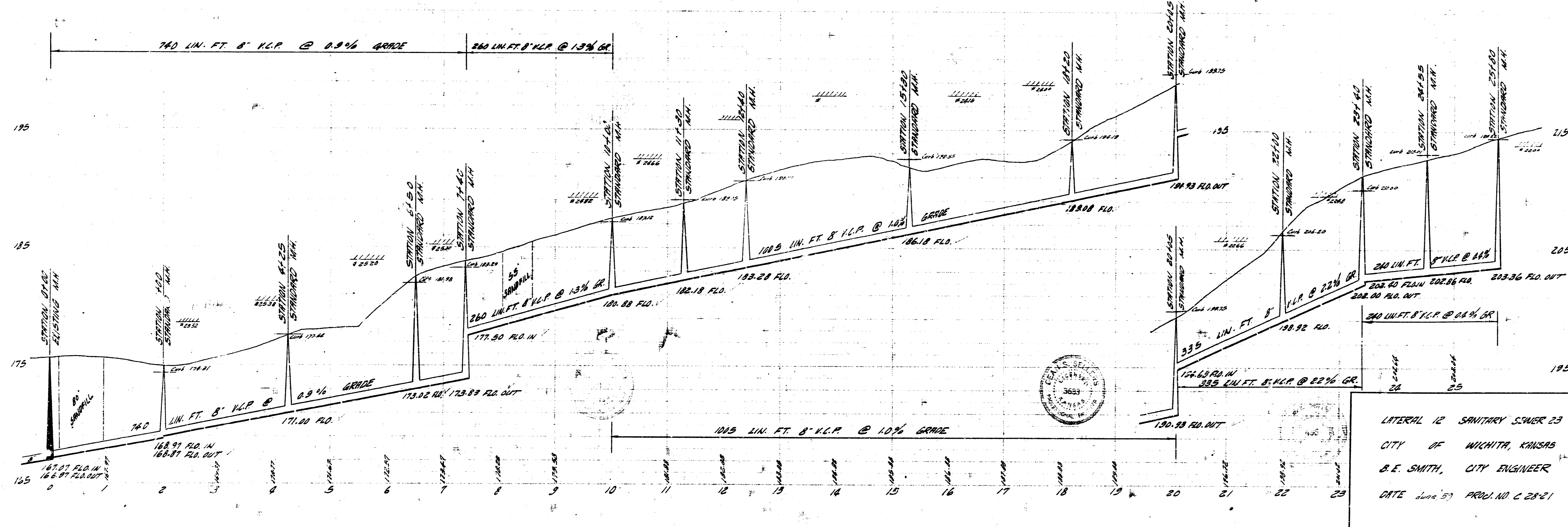


GENERAL NOTES:
COST OF REMOVAL OF ASPHALT PAVEMENT AND DIALS OR MANHOLE DECKS SHALL BE CONSIDERED INCLUDED IN THE BID PRICE OF PIPE. DRIVE CULVERTS AND DOWNS NOT TO BE REPLACED OR REPAIRED.
CONTRACTOR TO DISPOSE OF CULVERT PIPE IN ACCORDANCE WITH INSTRUCTIONS OF CITY INSPECTOR.

NOTE TO CONTRACTOR:
SAND FILL UNDER ALL DRIVES

NOTE:
DO NOT REPAIR STREET.

B.M. 178.27 "X" ON N. 1/2 25TH ST. NEAR CLOUDRIDGE ADDN. 26.5' W. OF PERSHING.
B.M. 175.223 STANDARD 5/4" DIA. OLIVER @ 25TH
B.M. 211.39 "S.S." OF CONC. BENE W. CLOTHES LINE PAST 200' N. OF 21ST ST., 60' W. OF RESERVE "A"



LATERAL 12 SANITARY SEWER 23
CITY OF WICHITA, KANSAS
B.E. SMITH, CITY ENGINEER
DATE June 57 PROJ. NO. C 2821