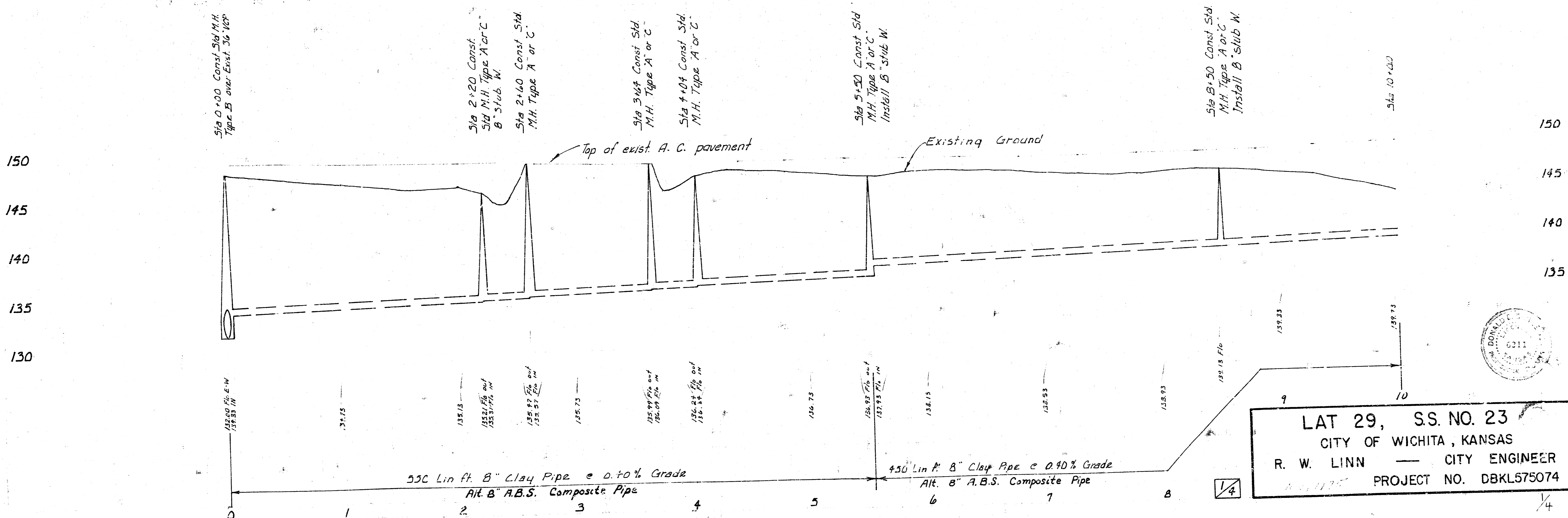
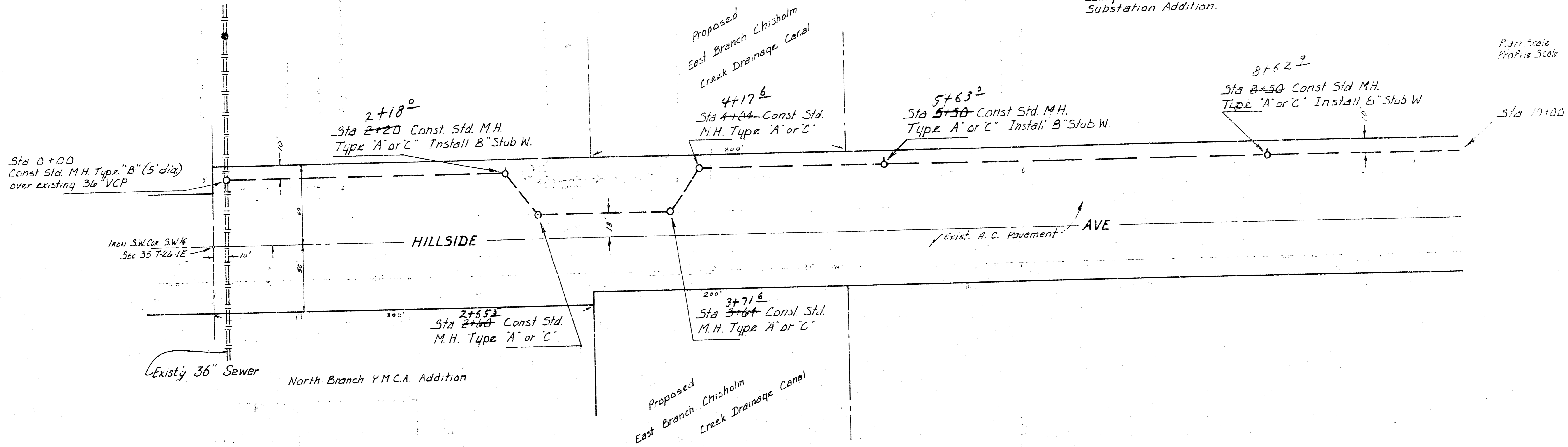


B.M. 14767 City Std. 24" N. & 40' E. of 1/4 section corner at 29th St. No. & Hillside.

B.M. 15547 60# spike on N. face of power pole on W. side of Hillside, 860 ft. S. of 33rd St. No., being the S.E. corner of Lot 1, Northeast Substation Addition.

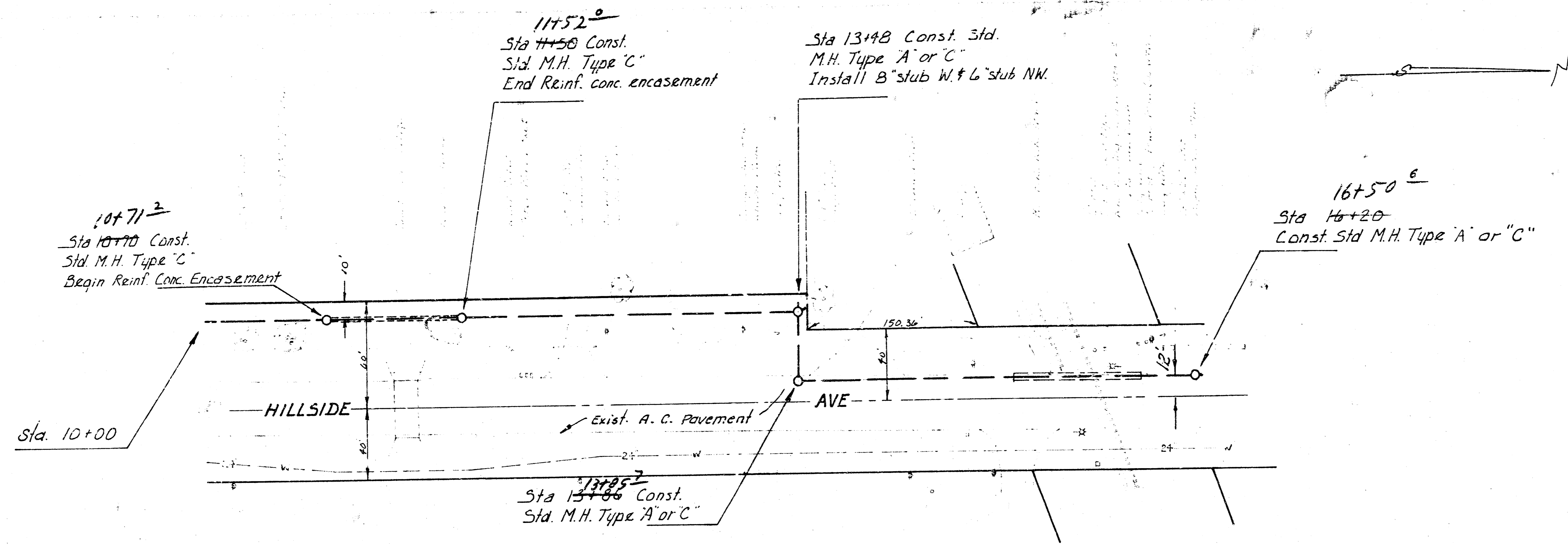
Plan Scale 1" = 40'
Profile Scale 1" = 40' horz.
1" = 5' vert.

R.L.K. 225, 219
R. Loomis

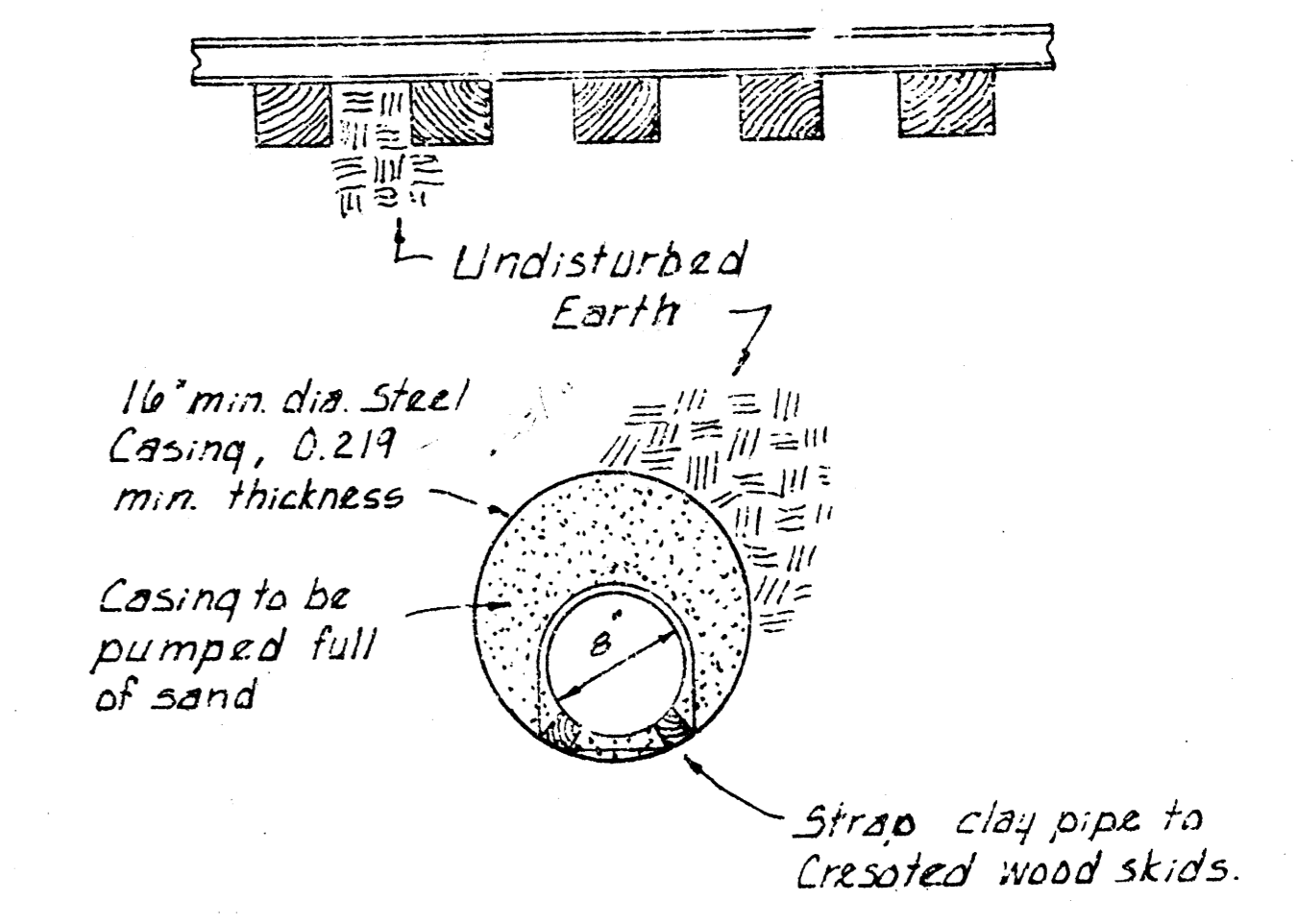


LAT 29, S.S. NO. 23
CITY OF WICHITA, KANSAS
R. W. LINN — CITY ENGINEER
PROJECT NO. DBKL575074



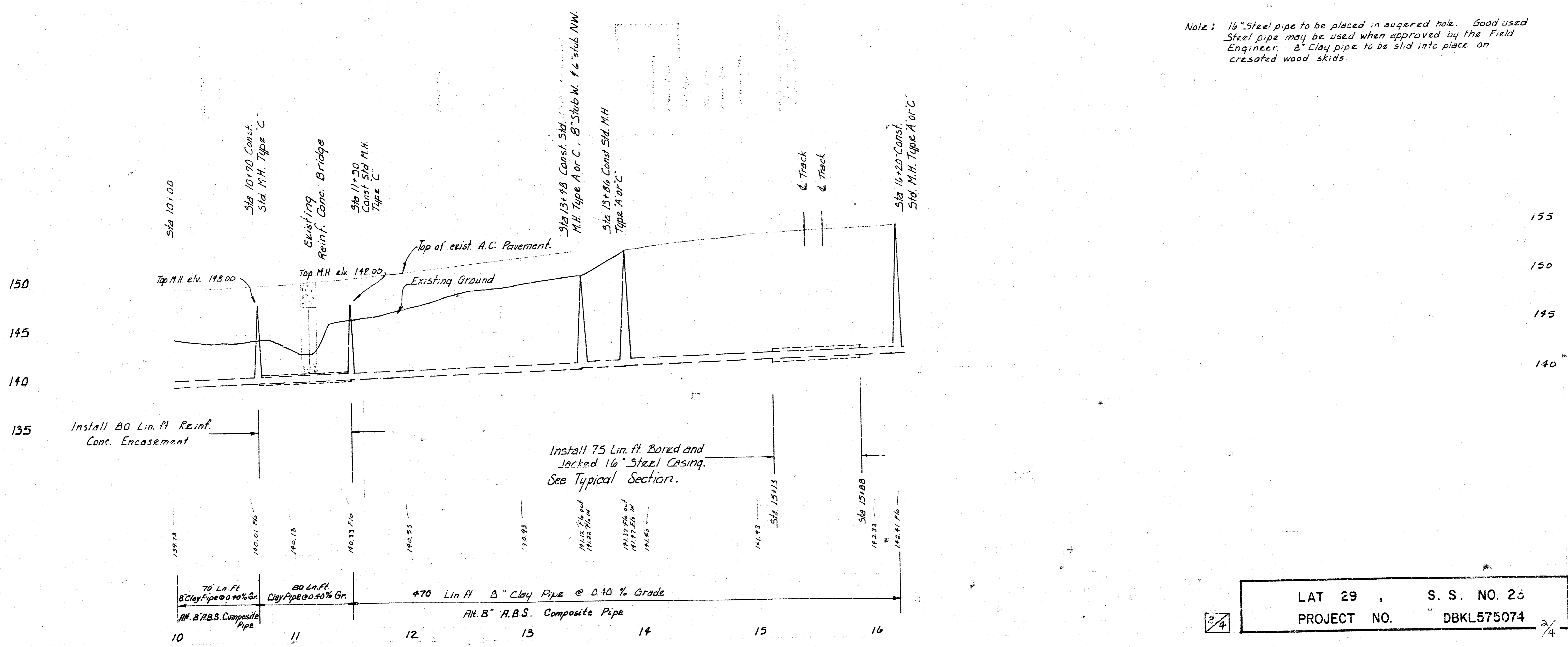


- Notes:
1. The 8" clay pipe to be placed under Rail Road by boring and jacking 16" diameter, 0.219 welded steel pipe and threading the 8" clay pipe through the 16" steel casing.
 2. All costs of labor and materials for boring and jacking 16" diameter, 0.219 welded steel pipe shall be included in the bid price of lin. ft. of 16" steel casing.
 3. All costs of labor and materials for pumping 16" steel casing full of sand shall be included in the bid price of lin. ft. of 16" steel casing.
 4. Lin. ft. of 8" clay pipe placed in 16" steel casing shall be paid by lin. ft. of 8" clay pipe.

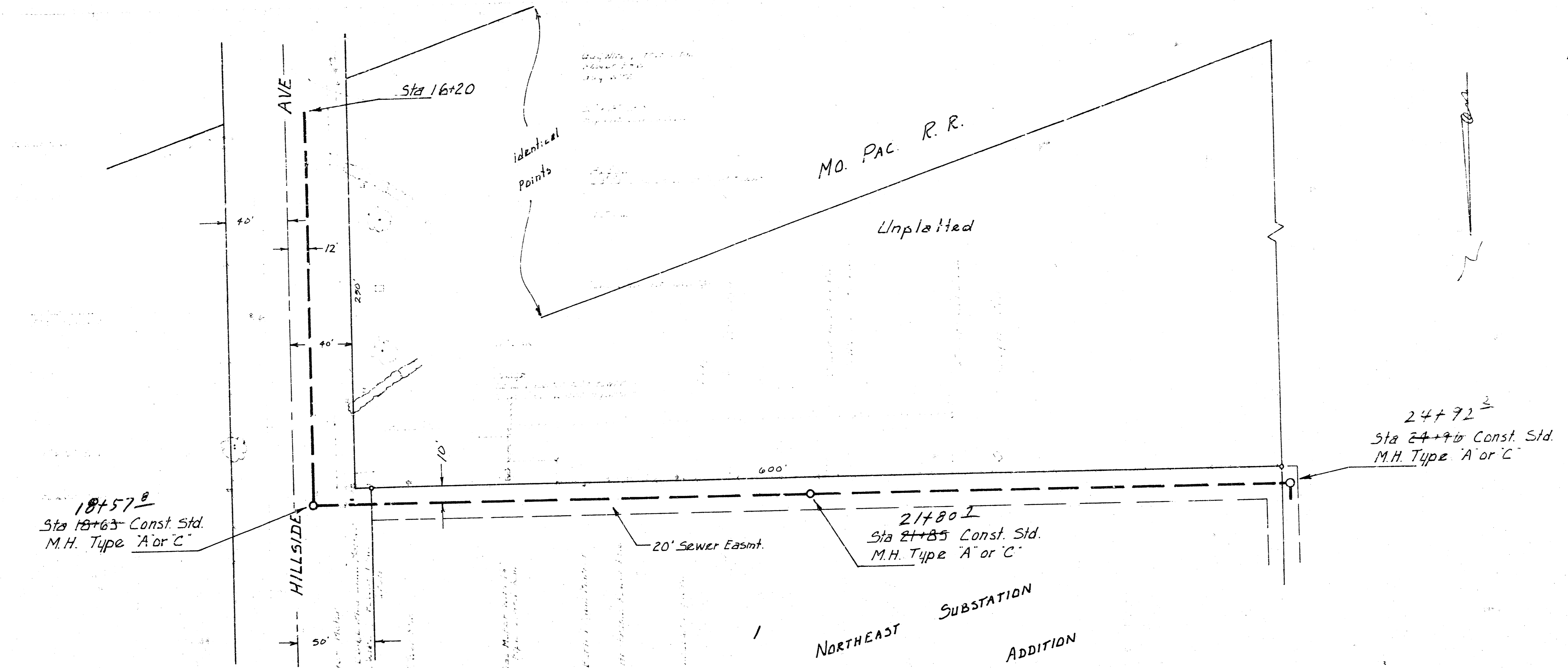


TYPICAL SECTION
Tunnel under Mo. Pacific R.R. Sta. 15+13 to Sta. 15+88

Note: 16" Steel pipe to be placed in augered hole. Good used Steel pipe may be used when approved by the Field Engineer. 8" Clay pipe to be slid into place on crosstied wood skids.

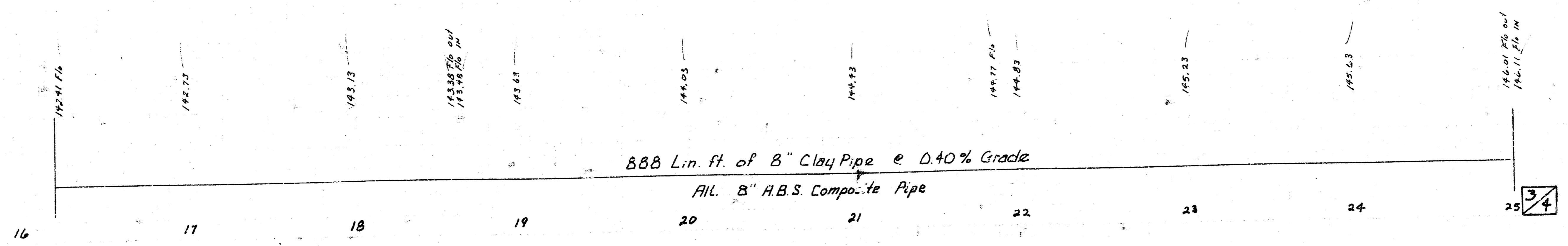
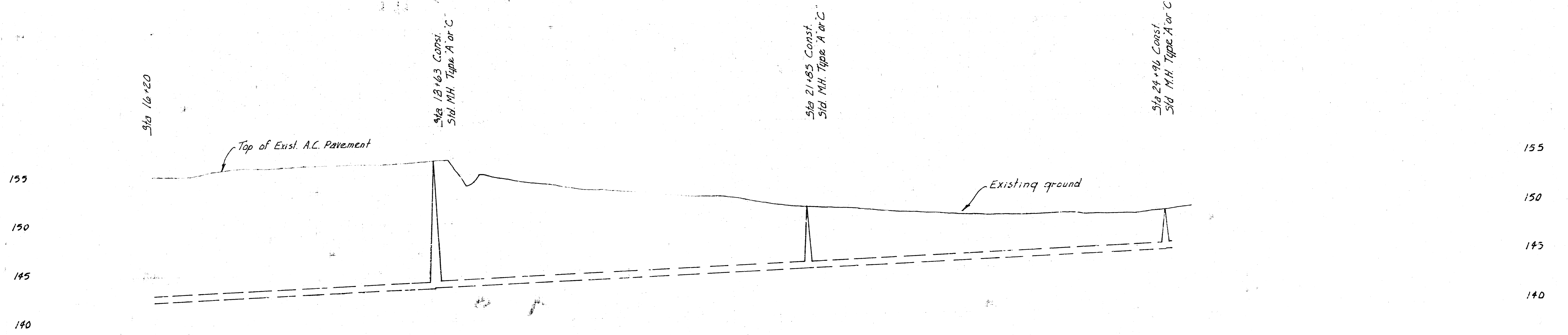


DLK 2/19

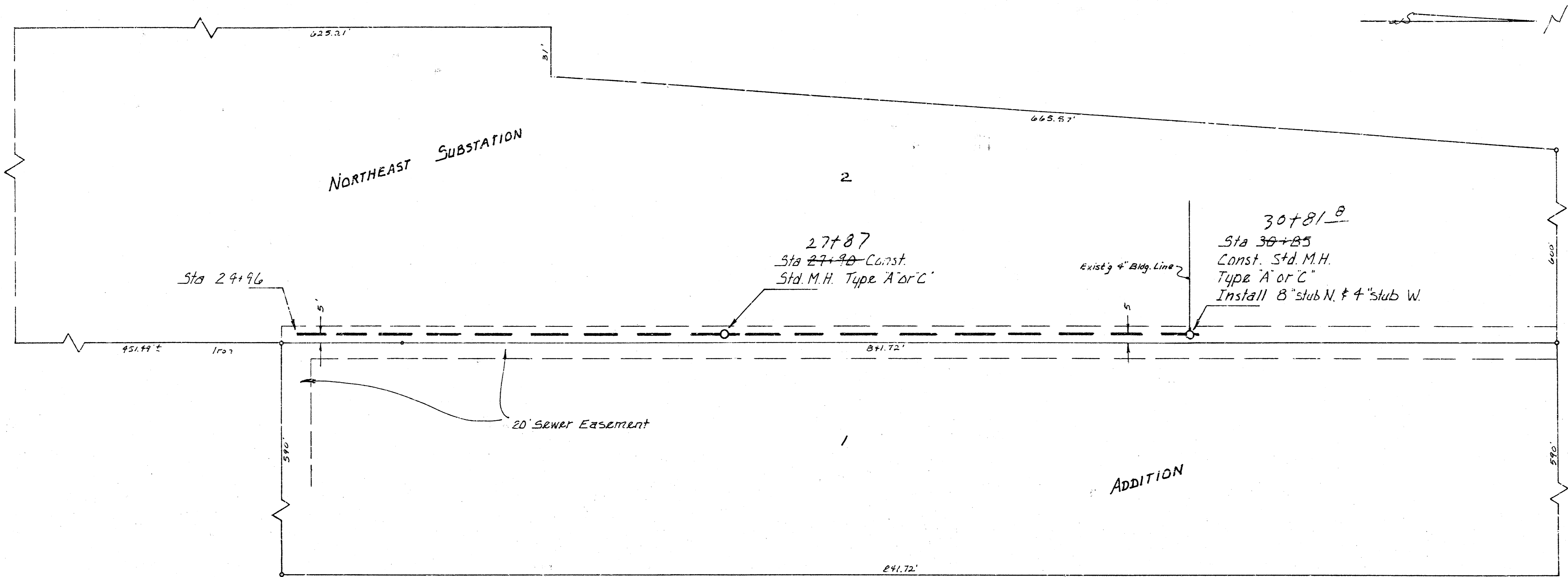


B.M. 159.61 City Sid. at Hillside & 33rd St. No. 38 ft. east & 32 ft. south of 1/4 section corner.

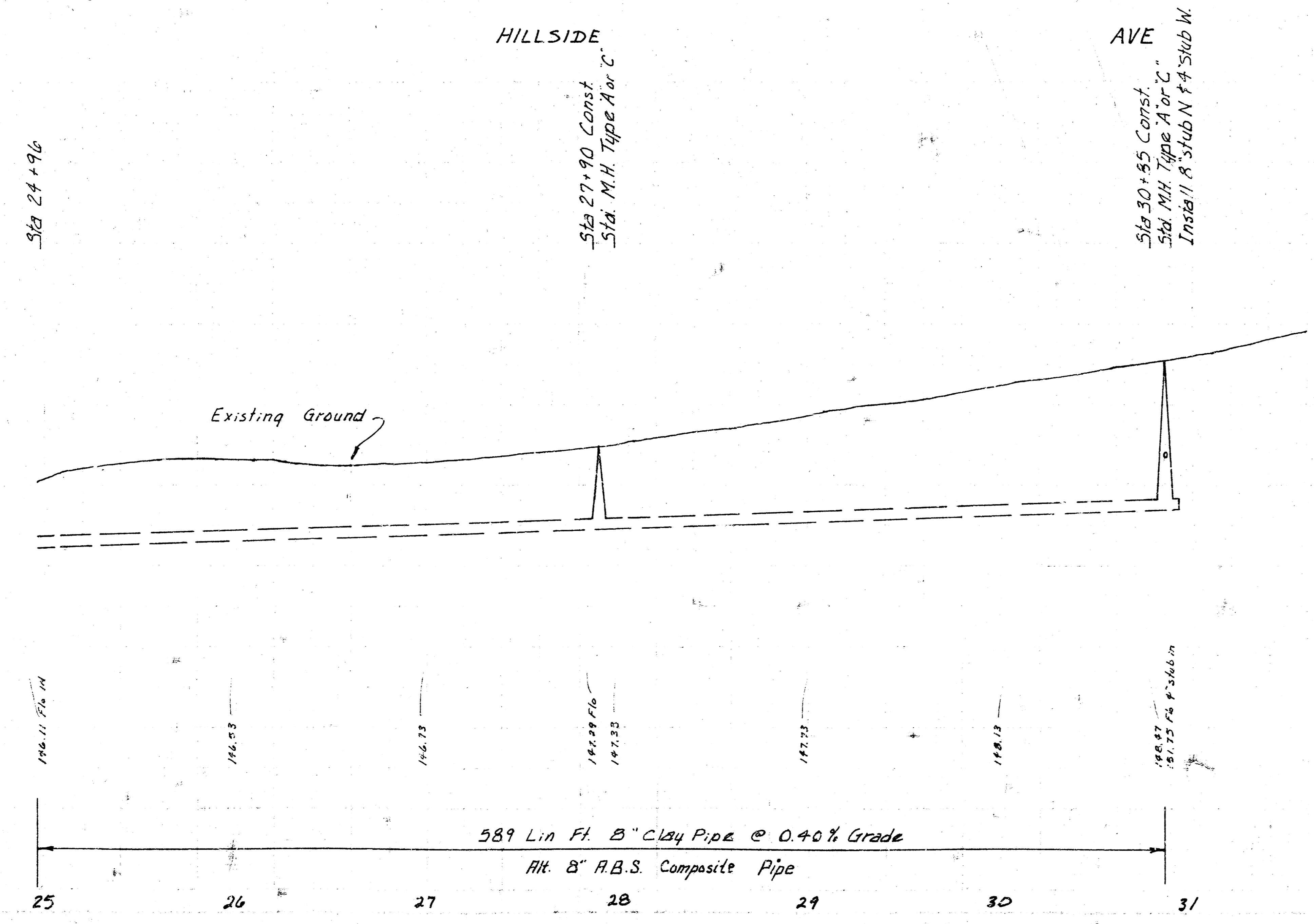
B.M. 162.2B 60# steel bench 5-face Power Pole S-side 33rd St. No. & 335 ft. W of Hillside at the NW corner lot 1 Northeast Substation Addition.



LAT 29 , S. S. NO. 23
 PROJECT NO. DBKL575074 3/4



33rd St. No.



LAT 29 ,	S.S. NO. 23
PROJECT NO. DBKL575074	4/4