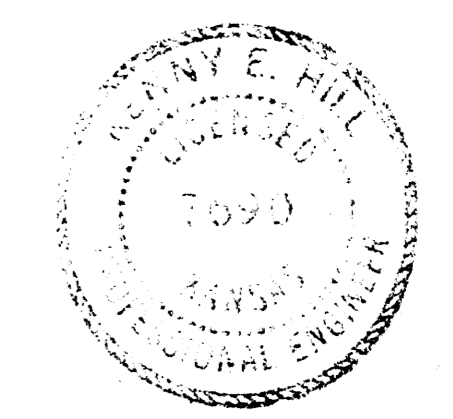


LATERAL 33, SANITARY SEWER NO. 23
 CITY OF WICHITA
 DEAN SELLERS - ACTING CITY ENGINEER
 PROJECT NO. 468-76-245-80440-000-000-001
 1980

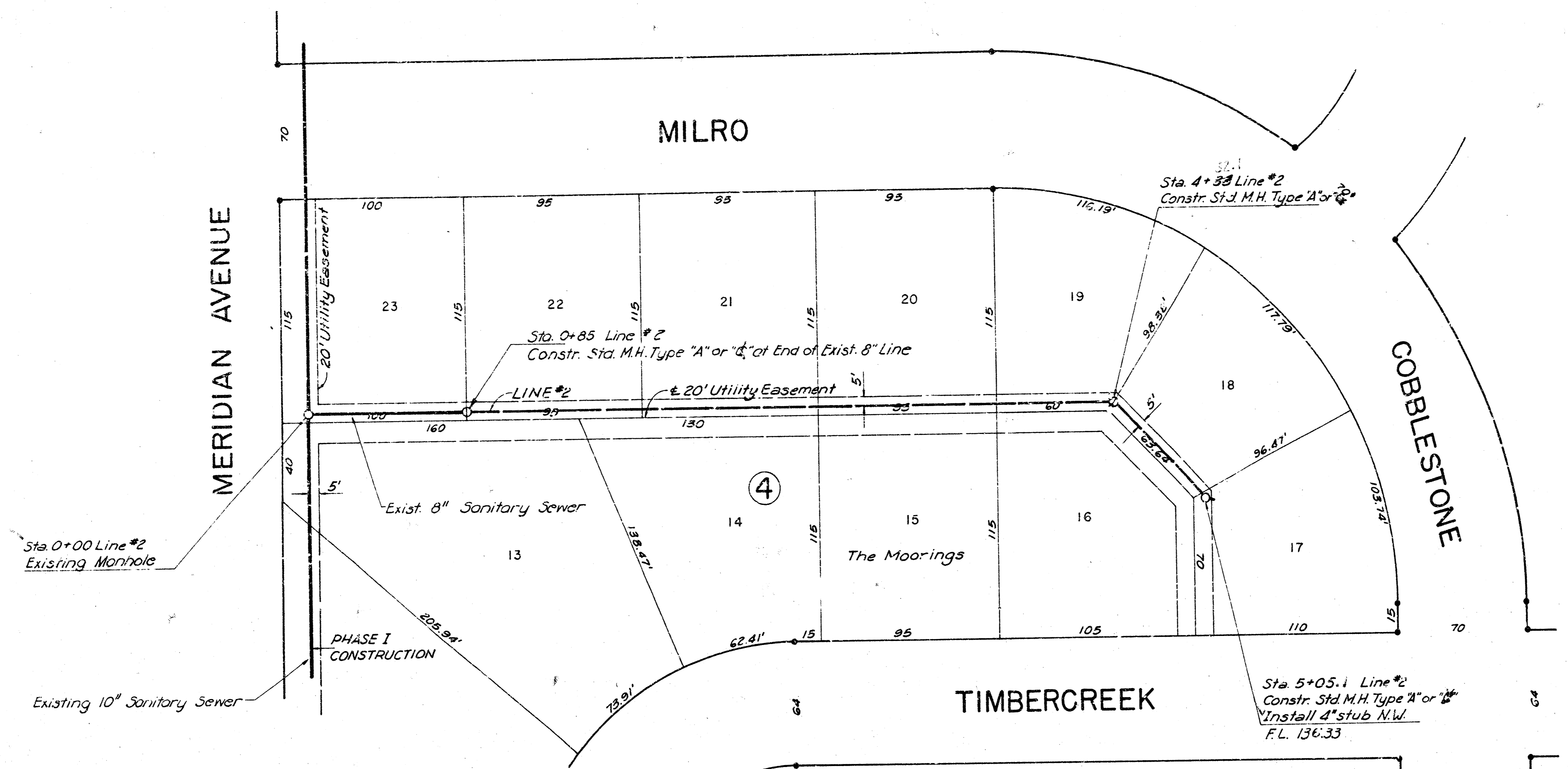
NOTE: LOTS INDICATED BY NUMBER ARE IN THE SANITARY SEWER BENEFIT DISTRICT

TABLE OF CONTENTS

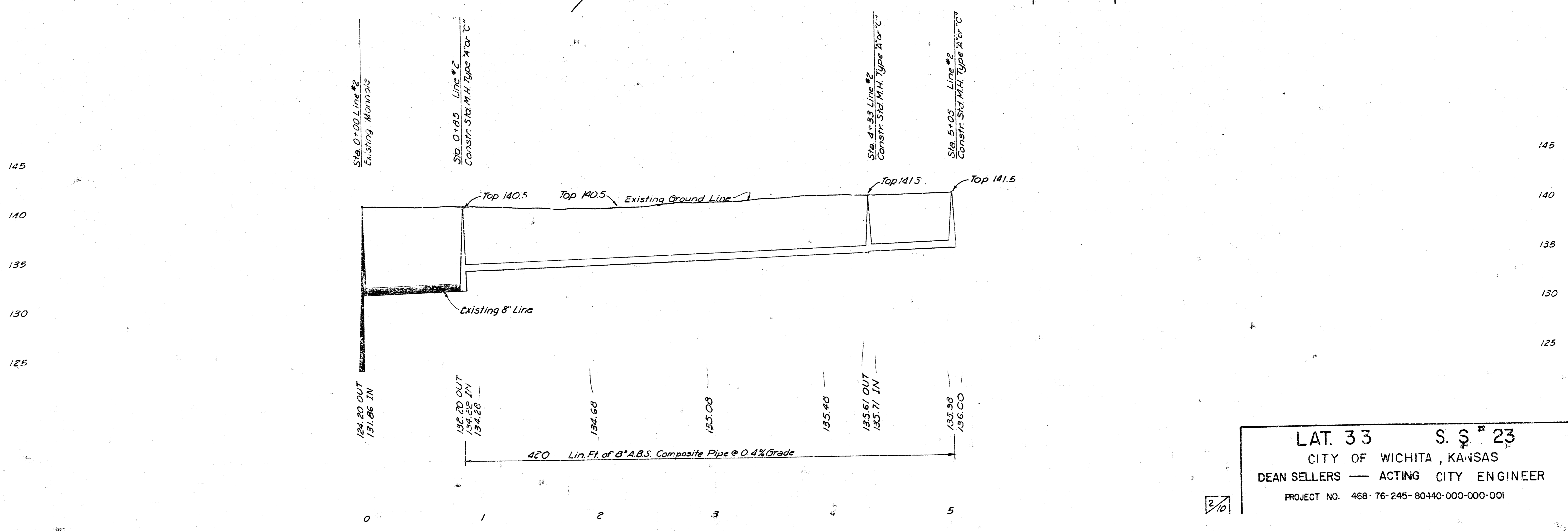
Line 1	Sheets	4-5-6-7
Line 2	Sheet	2
Line 3	Sheet	3
Line 4	Sheet	5
Line 5	Sheet	6
Line 6	Sheet	8
Line 7	Sheet	8
Line 8	Sheet	8
Line 9	Sheet	6
Line 10	Sheet	7
Vertical Riser Detail	Sheet	10
Paving Detail	Sheet	9



Revised 4/80
 608



SCALE
 Plan : 1" = 40'
 Profile : 1" = 40'
 Horiz. 1" = 40'
 Vert. 1" = 5'

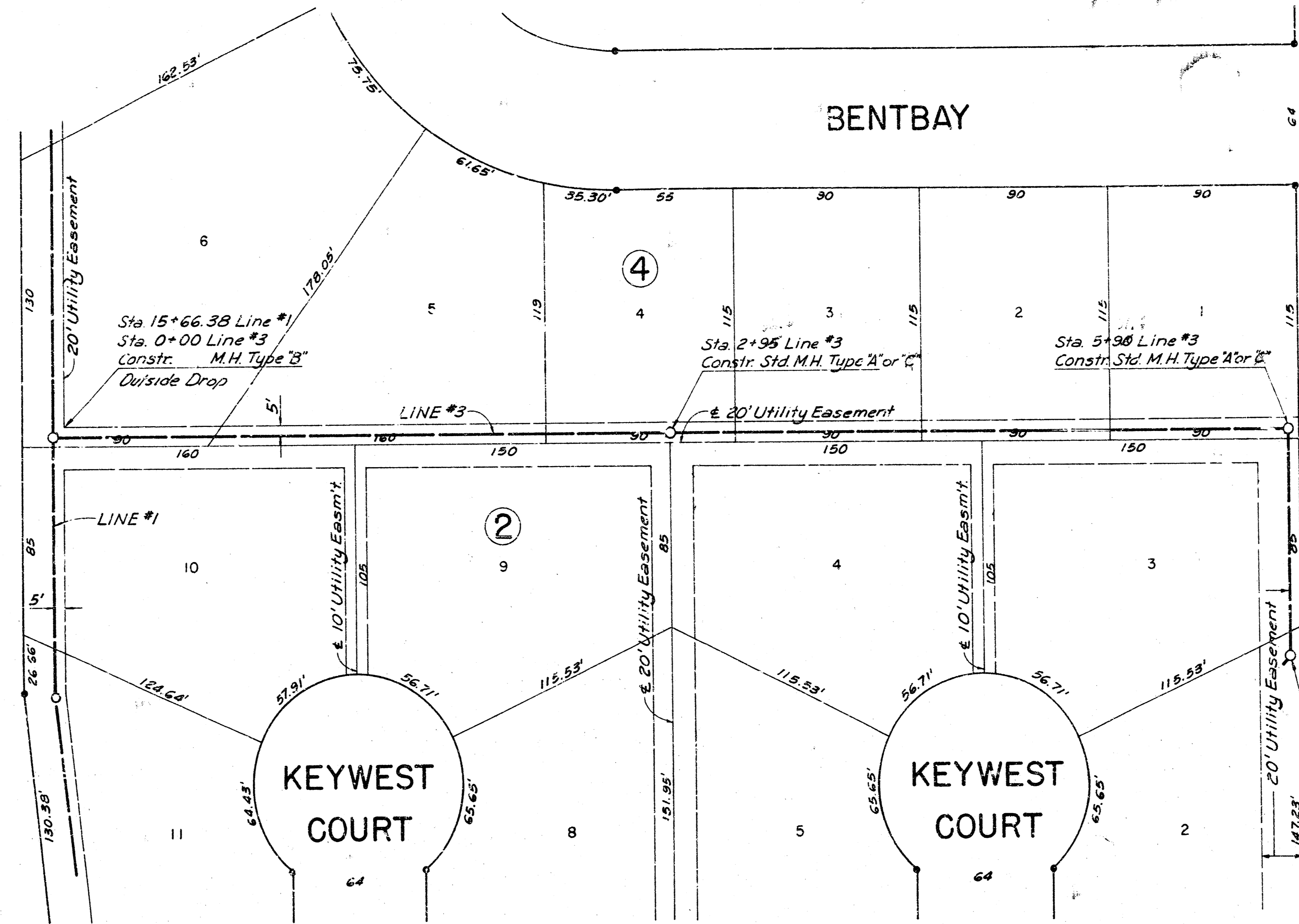


LAT. 33 S. § 23
 CITY OF WICHITA, KANSAS
 DEAN SELLERS — ACTING CITY ENGINEER
 PROJECT NO. 468-76-245-80440-000-000-001

MERIDIAN AVENUE

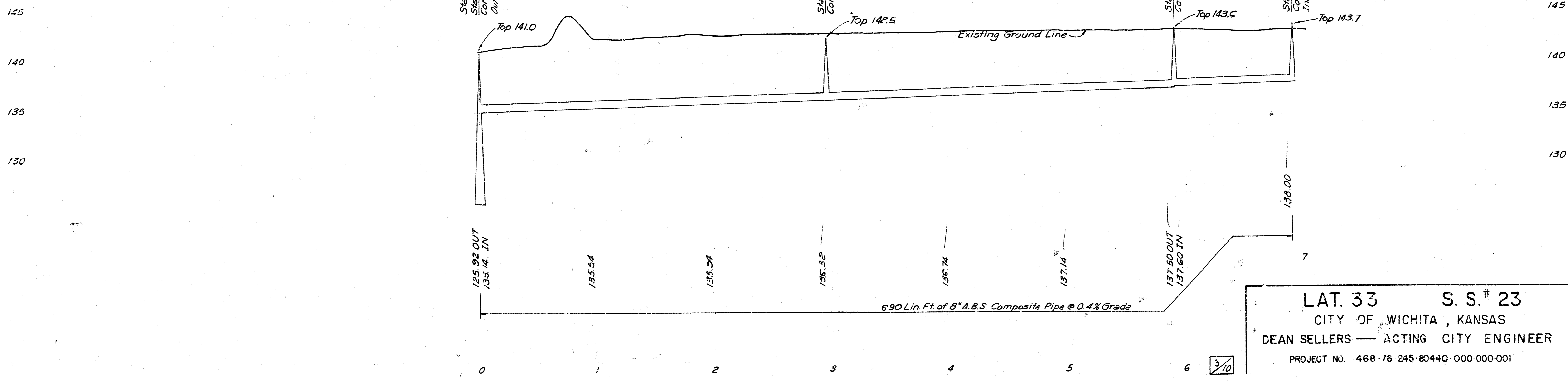
BENTBAY

COBBLESTONE



SCALE
 Plan : 1" = 40'
 Profile : 1" = 40'
 Horiz. : 1" = 40'
 Vert. : 1" = 5'

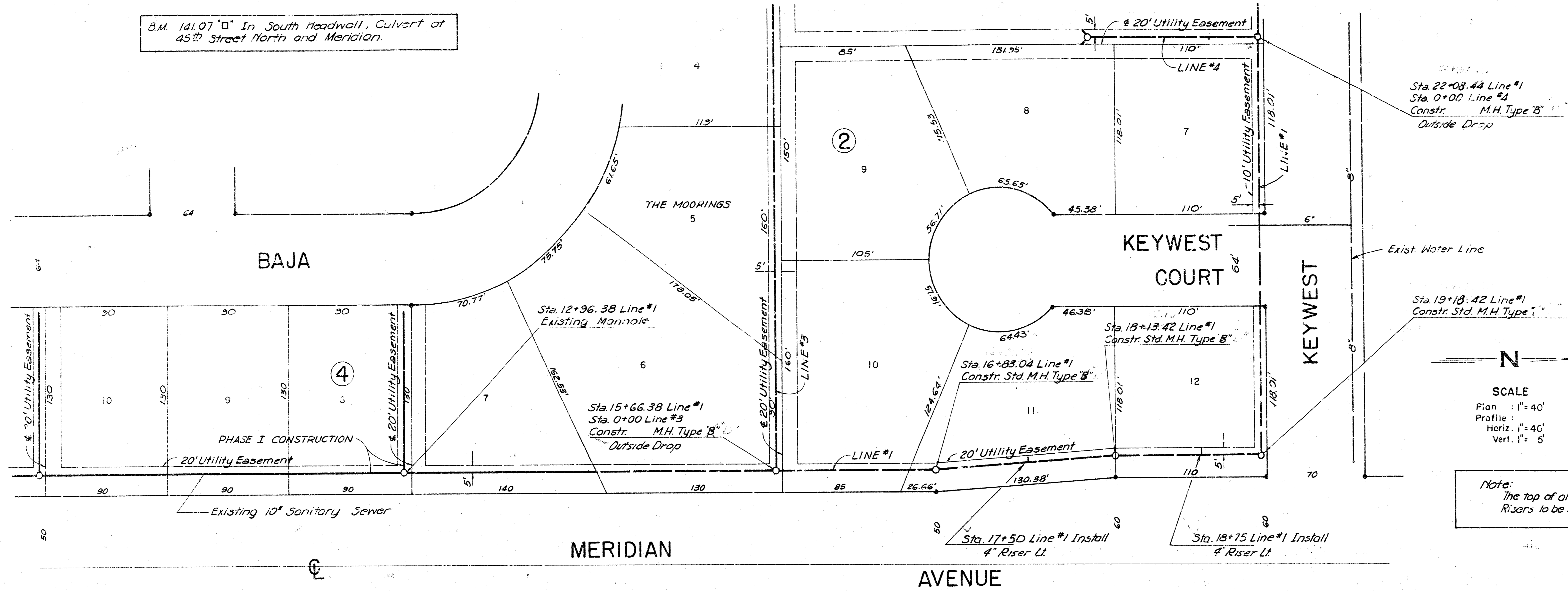
Sta. 6+90 Line #3
 Constr. Std. M.H. Type A or C
 Install 4" stub N.E. FL. 136.33



LAT. 33 S. S.# 23
 CITY OF WICHITA, KANSAS
 DEAN SELLERS — ACTING CITY ENGINEER
 PROJECT NO. 468-76-245-80440-000-000-001

3/0

B.M. 141.07 In South Roadwall, Culvert at 45th Street North and Meridian.

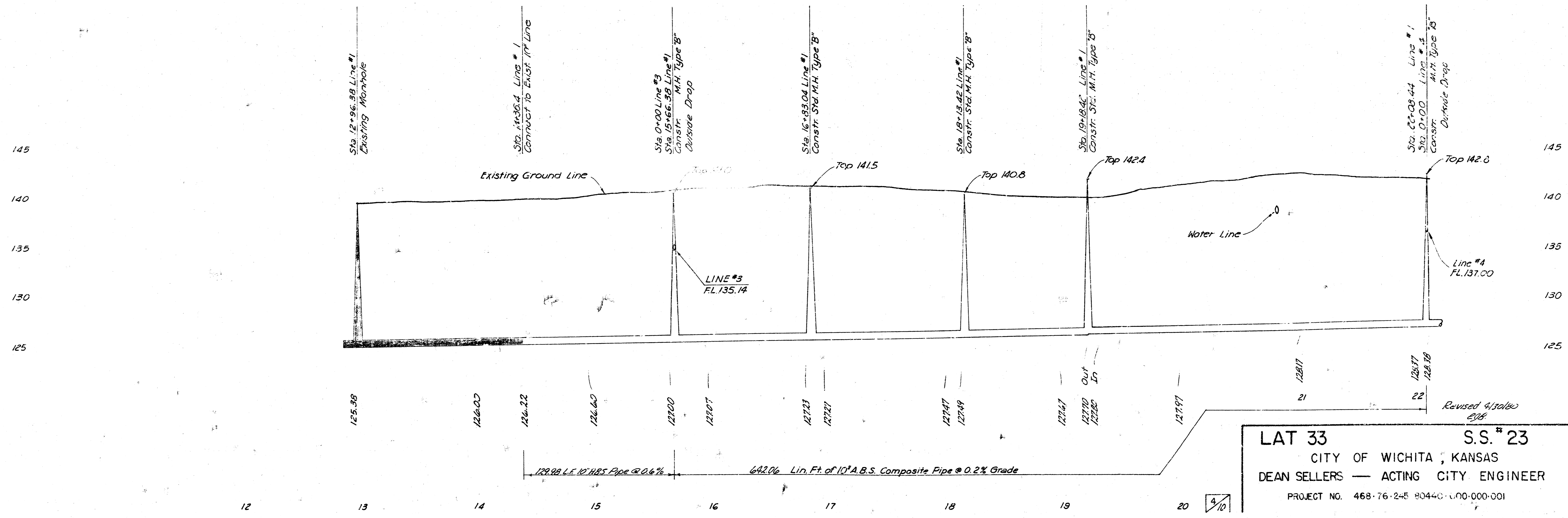


Sta. 22+08.44 Line #1
Sta. 0+00 Line #4
Constr. M.H. Type B
Outside Drop

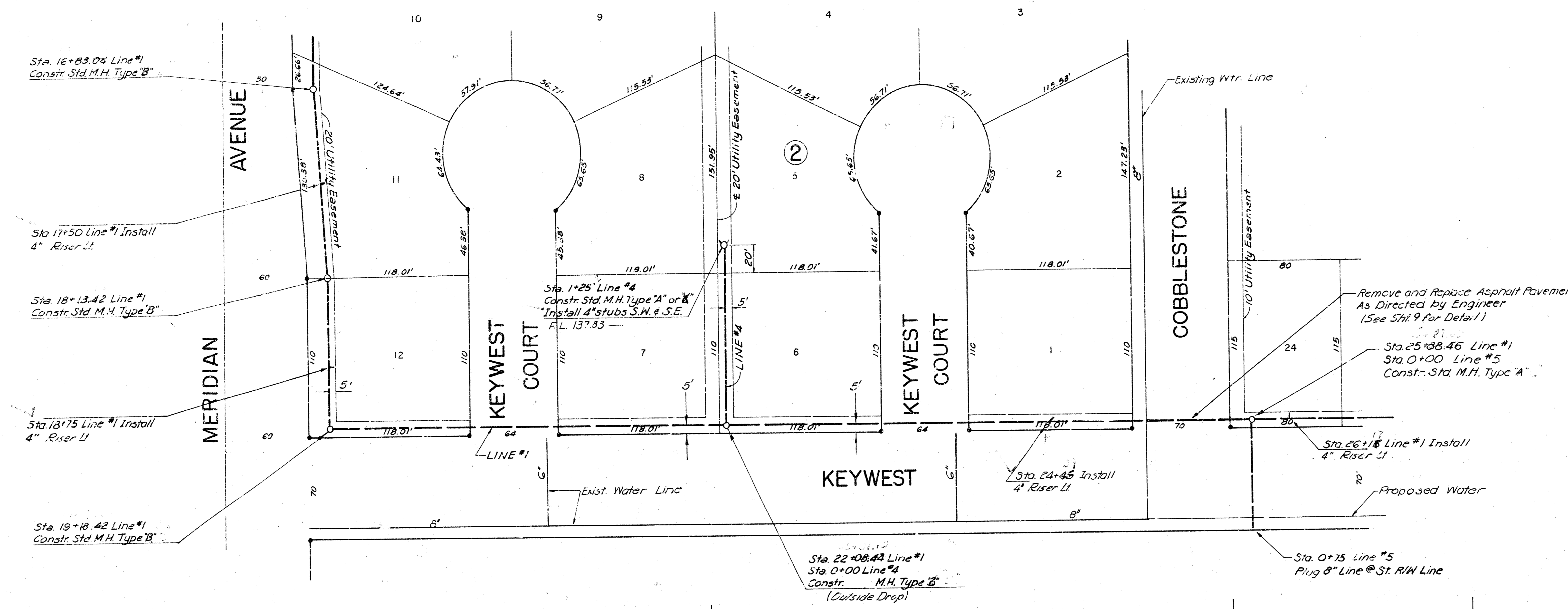
Sta. 19+18.42 Line #1
Constr. Std. M.H. Type B

N
SCALE
Plan : 1" = 40'
Profile : 1" = 40'
Vert. 1" = 5'

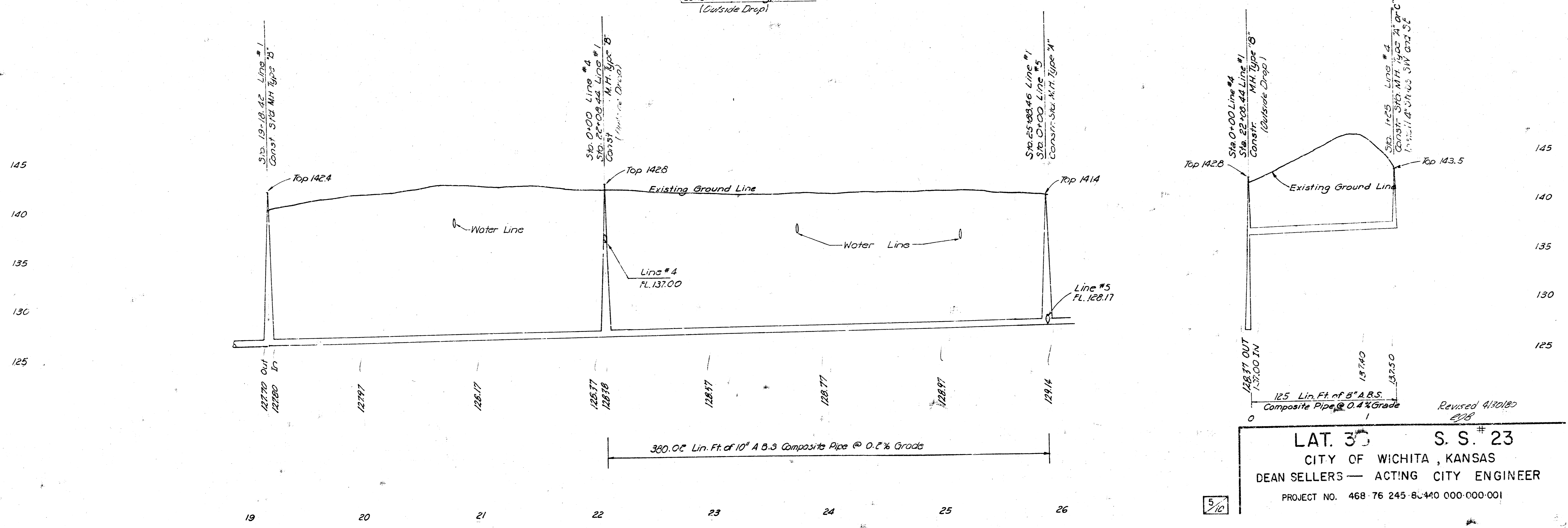
Note:
The top of all Riser Pipes to be at Elev 135.0
Risers to be installed only where indicated.



LAT 33 S.S. # 23
CITY OF WICHITA, KANSAS
DEAN SELLERS — ACTING CITY ENGINEER
PROJECT NO. 468-76-245 80440-000-000-001



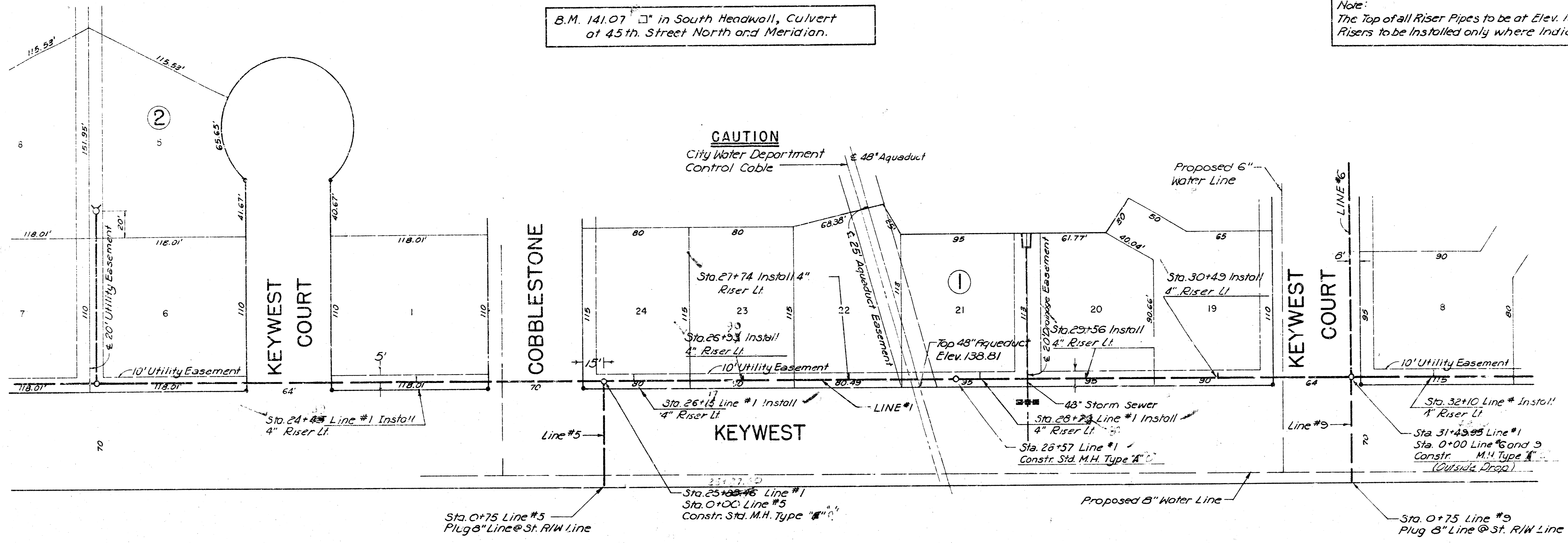
SCALE
 Plan : 1"=40'
 Profile : 1"=40'
 Horiz. : 1"=40'
 Vert. : 1"=5'



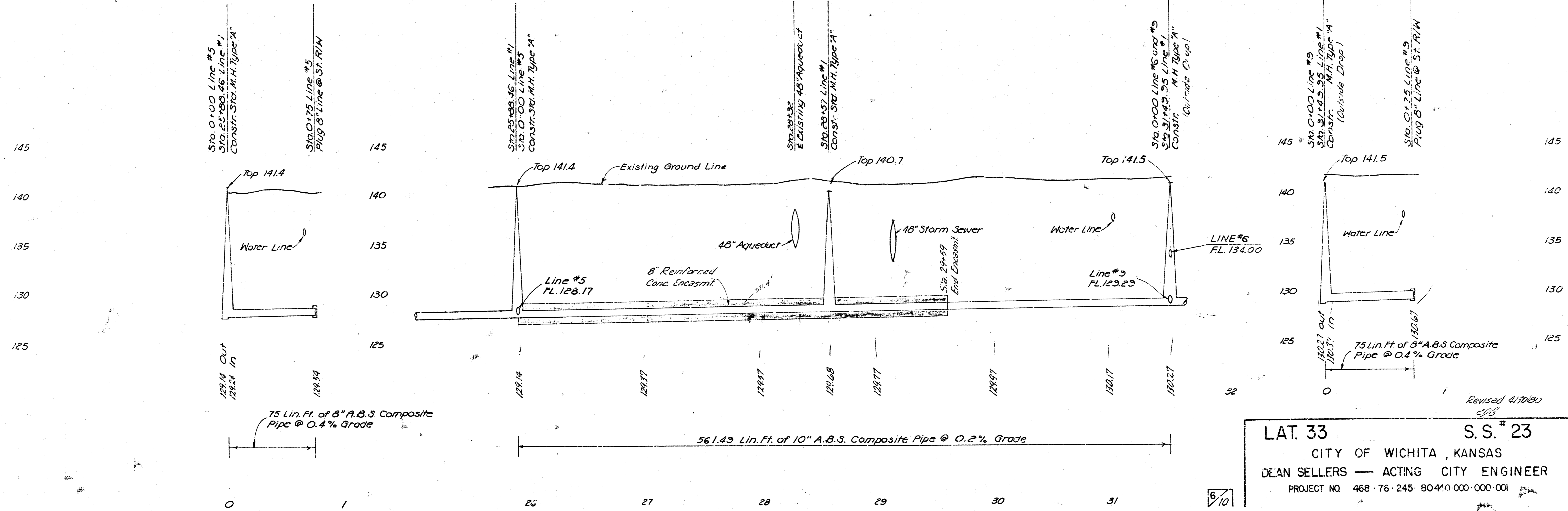
LAT. 35 S. S. # 23
 CITY OF WICHITA, KANSAS
 DEAN SELLERS — ACTING CITY ENGINEER
 PROJECT NO. 468-76-245-B-440-000-000-001
 Revised 4/30/80
 5/10

Note:
The Top of all Riser Pipes to be at Elev. 135.0.
Risers to be Installed only where Indicated.

B.M. 141.07 \square in South Headwall, Culvert
at 45th Street North and Meridian.

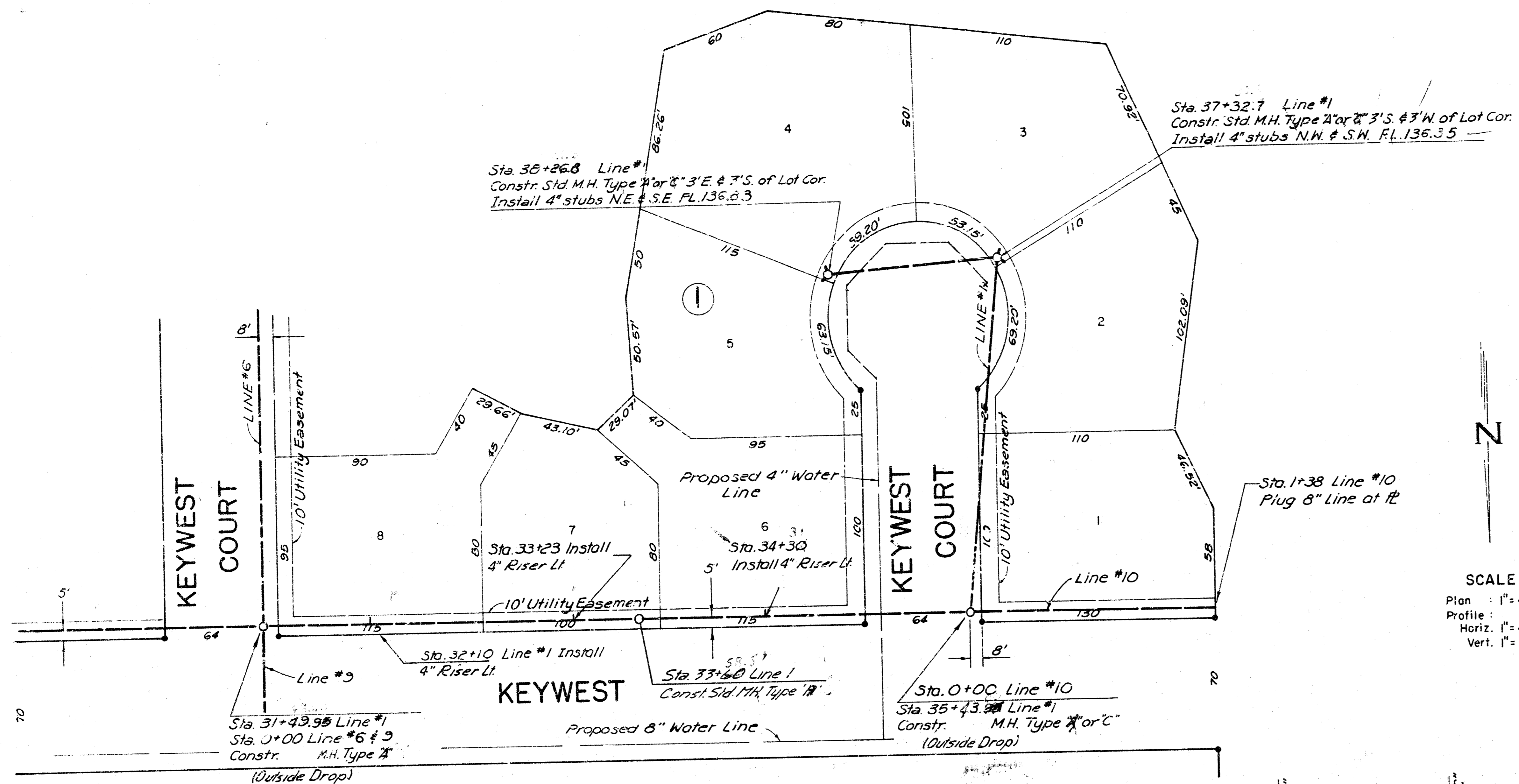


SCALE
Plan : 1" = 40'
Profile : 1" = 40'
Vert. 1" = 5'

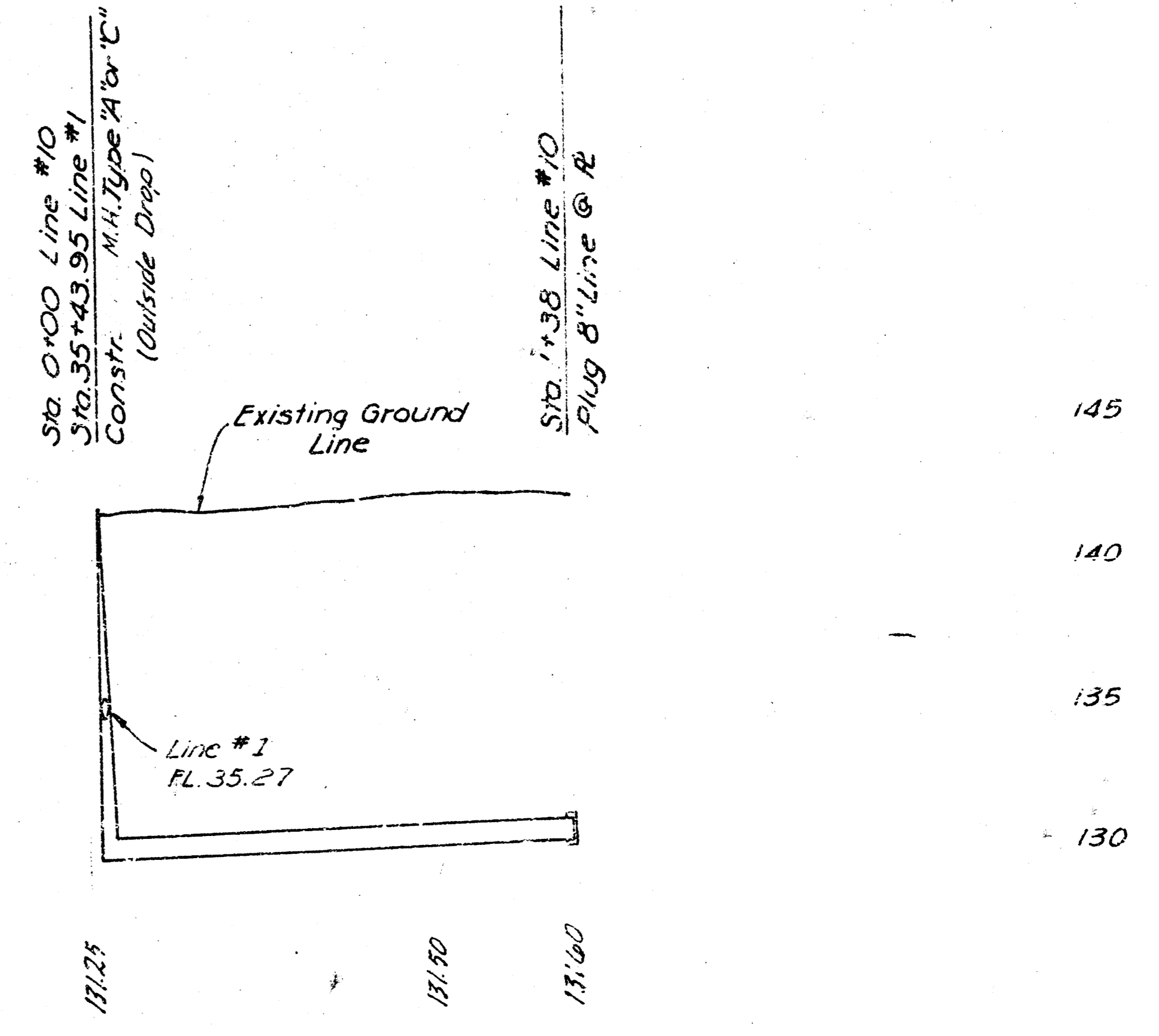
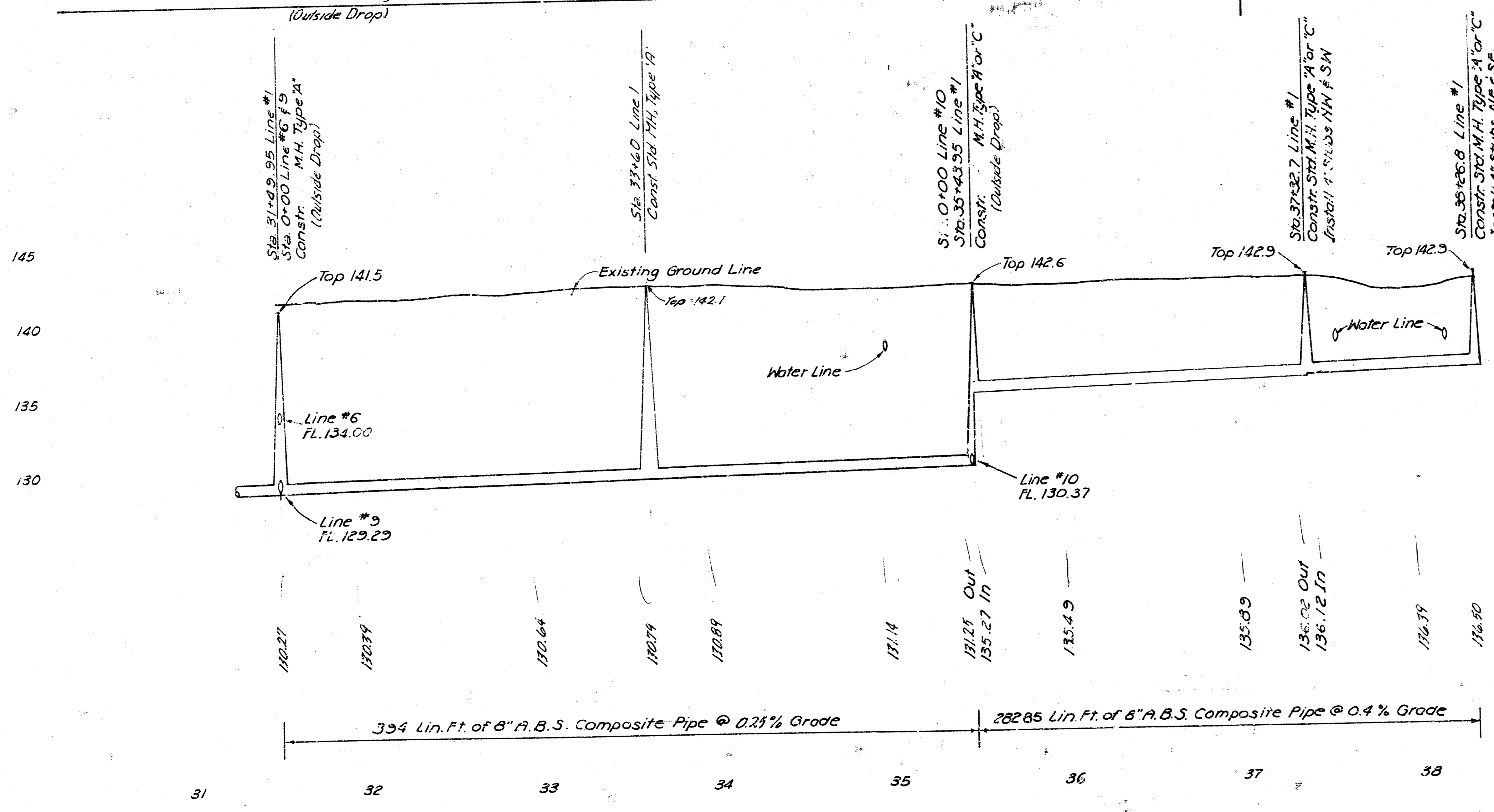


LAT. 33 S.S. # 23
CITY OF WICHITA, KANSAS
DEAN SELLERS — ACTING CITY ENGINEER
PROJECT NO. 468-76-245-80410.000-000-001
Revised 4/10/2000

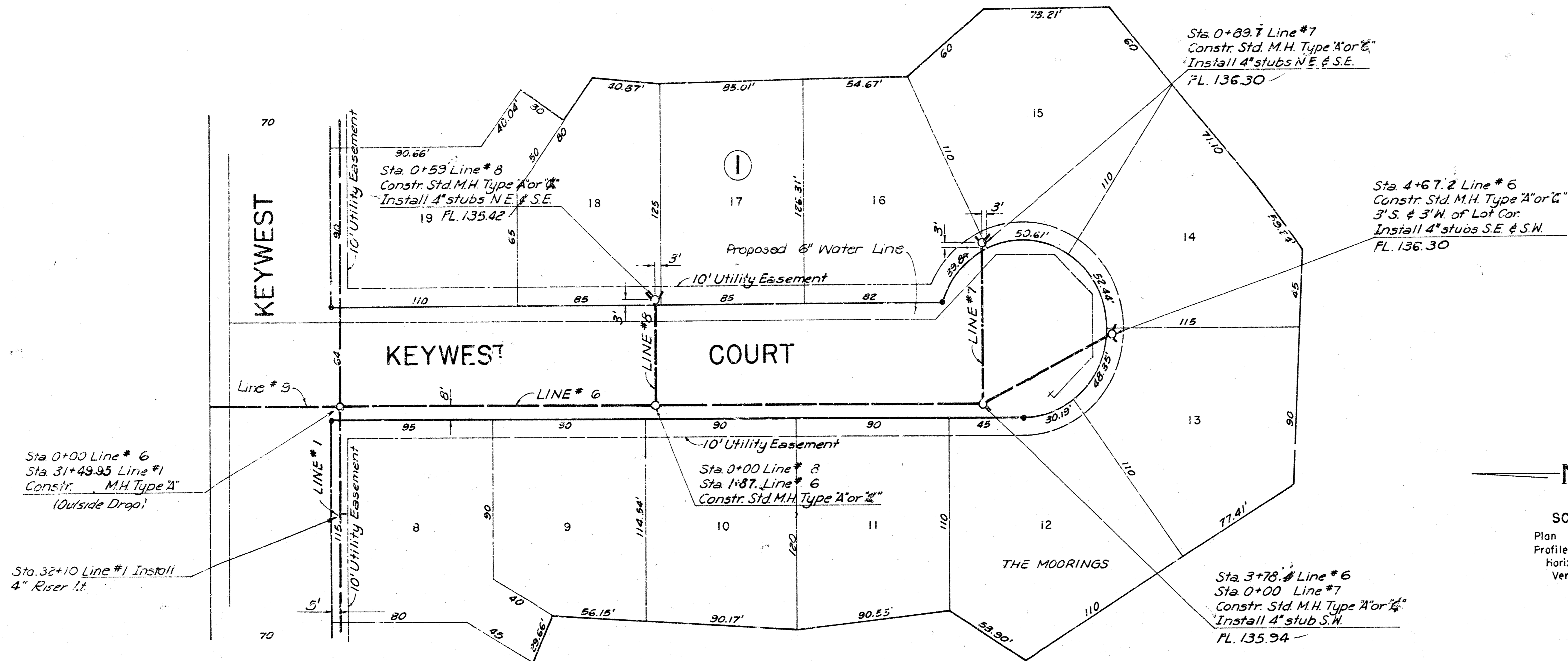
6/10



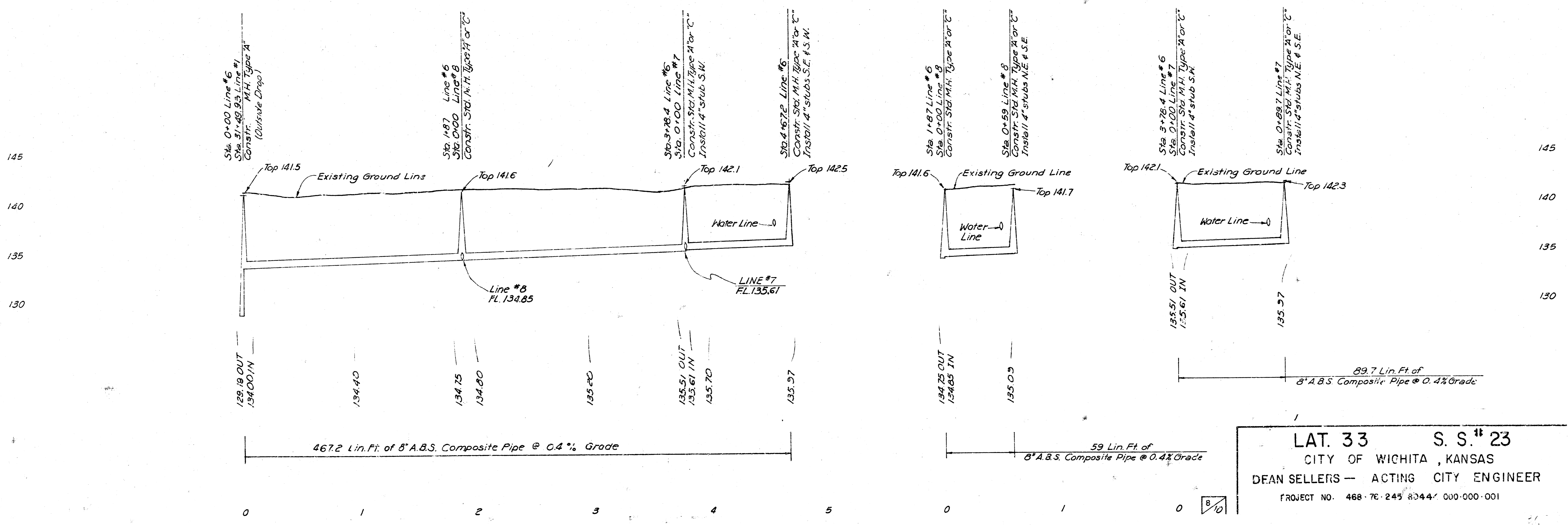
SCALE
 Plan : 1" = 40'
 Profile : 1" = 40'
 Horiz. : 1" = 40'
 Vert. : 1" = 5'



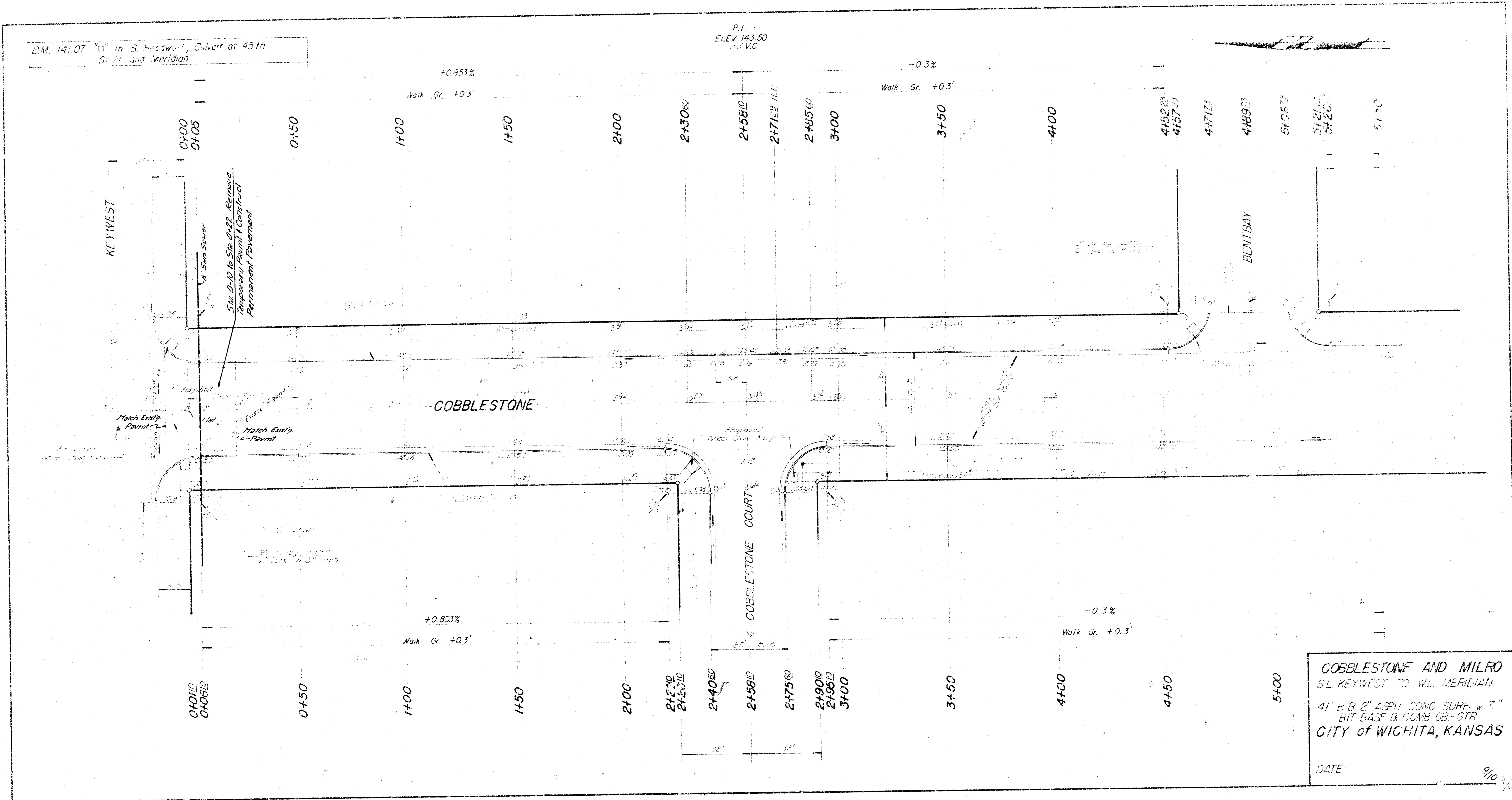
138 Lin. Ft. of 8" A.B.S. Composite Pipe @ 0.25% Grade
 Revised 4/10/80
LAT. 33 S. S. # 23
 CITY OF WICHITA, KANSAS
 DEAN SELLERS — ACTING CITY ENGINEER
 PROJECT NO. 468-76-245-80440-000-000-001



SCALE
 Plan : 1" = 40'
 Profile : 1" = 40'
 Horiz. : 1" = 40'
 Vert. : 1" = 5'



LAT. 33 S. S. 23
 CITY OF WICHITA, KANSAS
 DEAN SELLERS — ACTING CITY ENGINEER
 PROJECT NO. 468-76-245-2344-000-000-001



COBBLESTONE AND MILRO
 S/L KEYWEST TO WL. MERIDIAN
 41' B-B 2" ASPH. CONC. SURF. & 7"
 BIT. BASE & COMB. CB-GTR.
 CITY OF WICHITA, KANSAS
 DATE _____ 9/10 1/2