

LATERAL 52, SANITARY SEWER NO. 23

CITY OF WICHITA

M.E. LINDEBAK, CITY ENGINEER

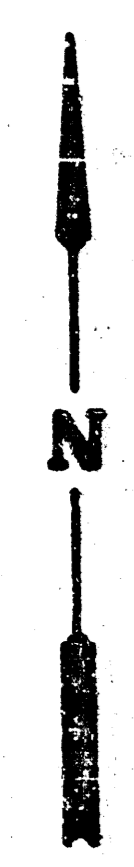
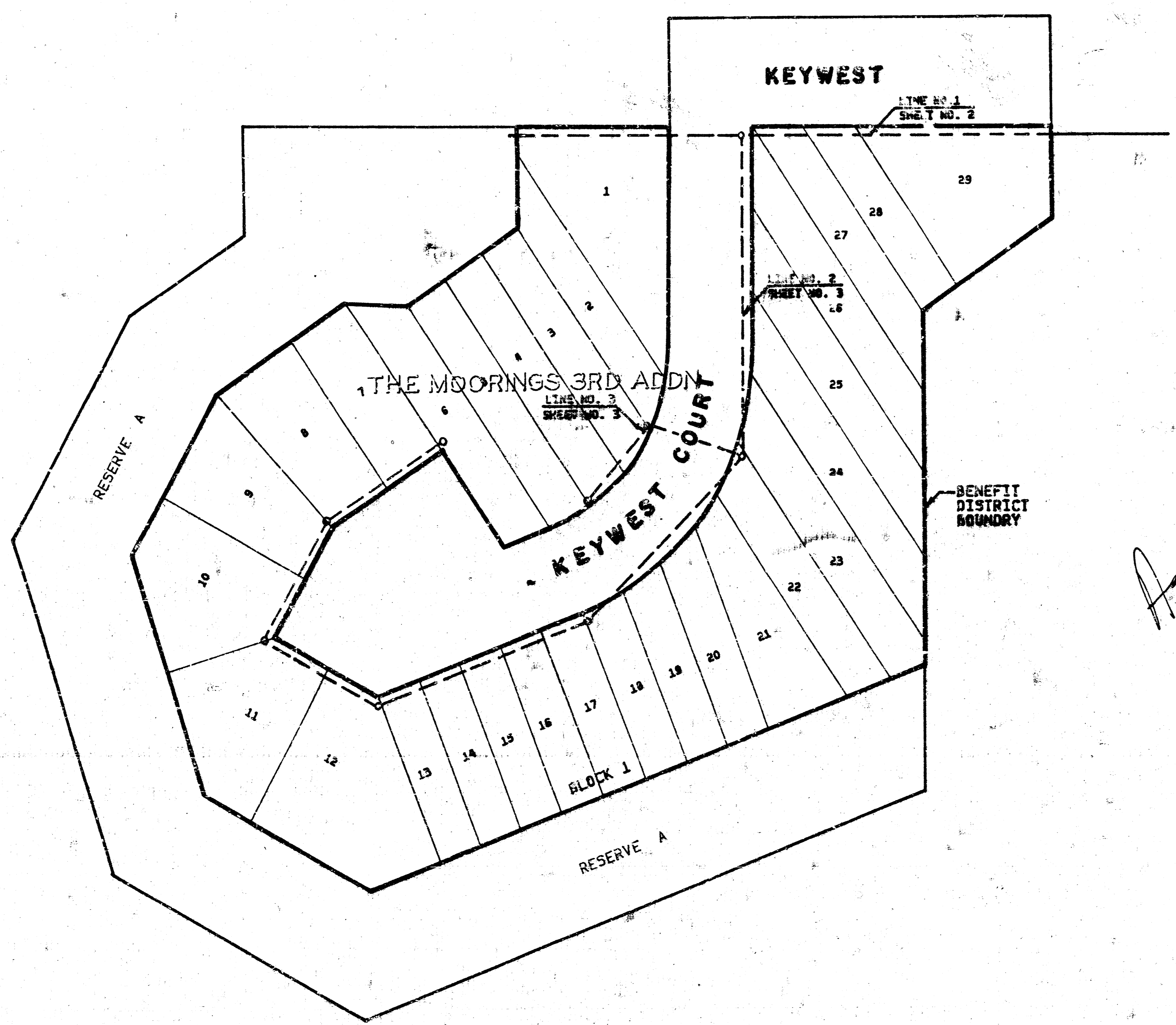
PROJECT NO. 468-76-245-81313-000-000-001

DATE: OCTOBER 1983

TABLE OF CONTENTS

TITLE SHEET	-----	SHEET 1
LINE NO. 1	-----	SHEET 2
LINE NO. 2	-----	SHEET 3
LINE NO. 3	-----	SHEET 3
RISER DETAIL	-----	SHEET 4

*As Built  
I.L.L.  
J. 84*

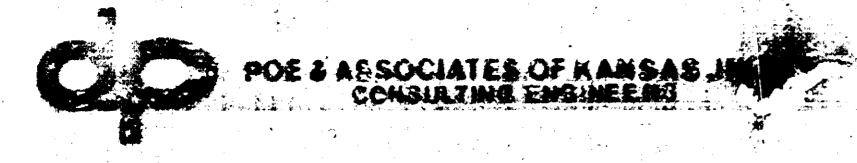


SCALE: 1"=30'

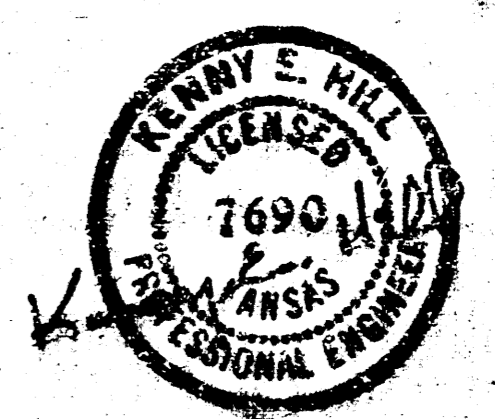
THE MOORINGS 3rd ADDN.

B.M. 40" CUT IN SOUTH HEADWALL OF CULVERT AT 43rd STREET NORTH AND MERIDIAN AVE. ELEV. 141.07 (PROJECT DATUM)

Prepared By



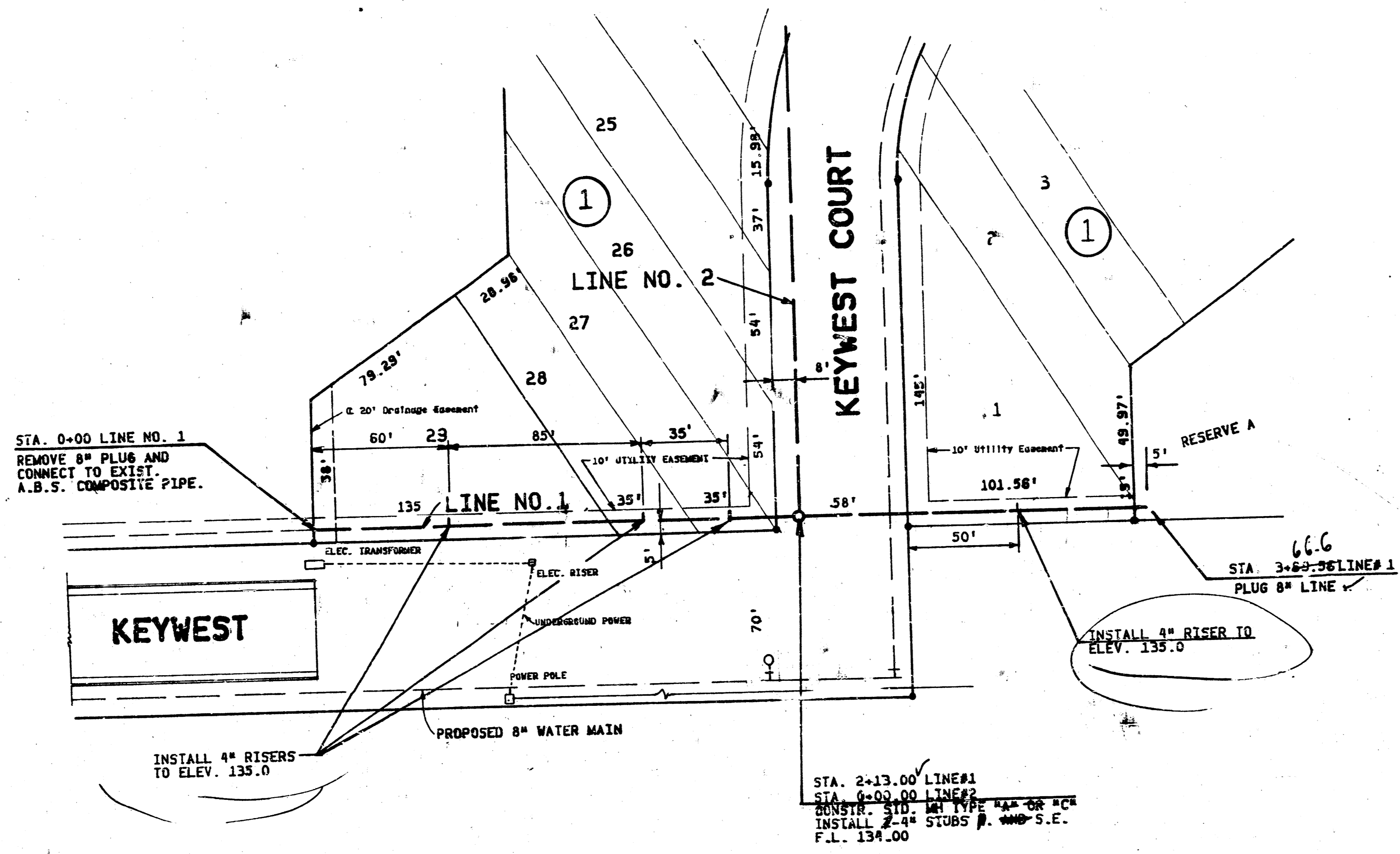
THE CONTRACTOR SHALL BE RESPONSIBLE FOR PRESERVING PROPERTY IRONS. THE CONTRACTOR SHALL BE REQUIRED TO RE-ESTABLISH ANY PROPERTY IRONS WHICH ARE DAMAGED OR DESTROYED BY HIS CONSTRUCTION OPERATIONS. SUCH IRONS SHALL BE RE-ESTABLISHED BY A LICENSED LAND SURVEYOR OR A LICENSED PROFESSIONAL ENGINEER IN ACCORDANCE WITH STATE LAWS.



B.M.# 1 4" CUT IN SOUTH HEADWALL OF CULVERT  
AT 45TH STREET NORTH AND MERIDIAN AVE.  
ELEV. 141.07 (CITY OF WICHITA DATUM)

B.M.# 2 4" CUT ON N. SIDE OF MANHOLE RING  
LOCATED AT 138' EAST OF STA. 0+00  
(LINE NO. 1) ELEV. 142.64  
(PROJECT DATUM)

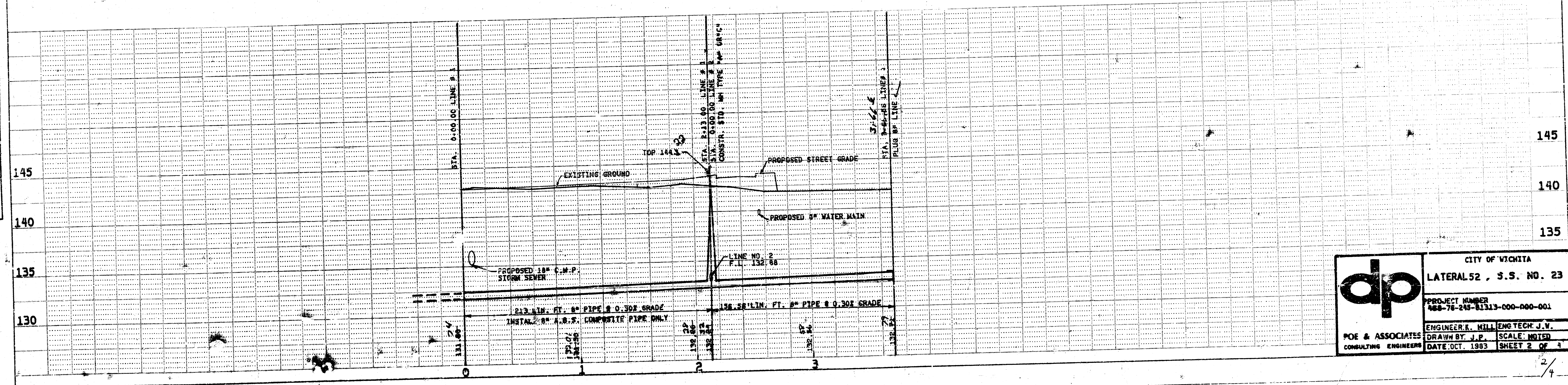
DATE	
BY	
DESIGNED	
PLANNED	
ALIGNED	
CHECKED	
NOTE BOOK	
NO.	



*As Built  
J.L.L.  
3-84*

SCALE:  
HORIZ. 1"=40'  
VERT. 1"=5'

DATE	
BY	
DESIGNED	
PLANNED	
ALIGNED	
CHECKED	
NOTE BOOK	
NO.	



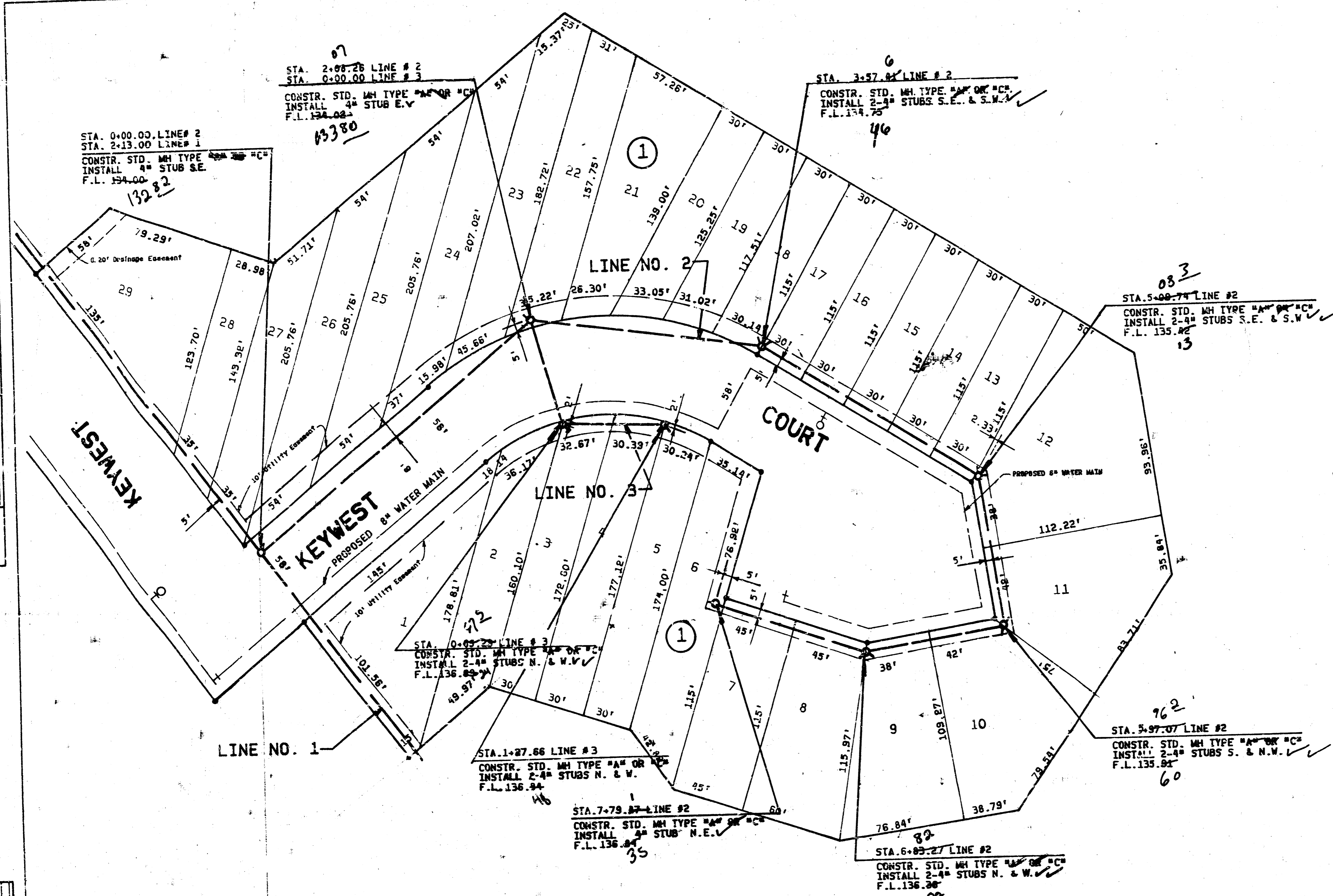
<b>dp</b>	CITY OF WICHITA
	LATERAL 52, S.S. NO. 23
	PROJECT NUMBER 488-76-245-11313-000-000-001
	ENGINEER: HILL ENG TECH. J.V. DRAWN BY: J.P. SCALE: NOTED DATE: OCT. 1983 SHEET 2 OF 4

145  
140  
135

2/4

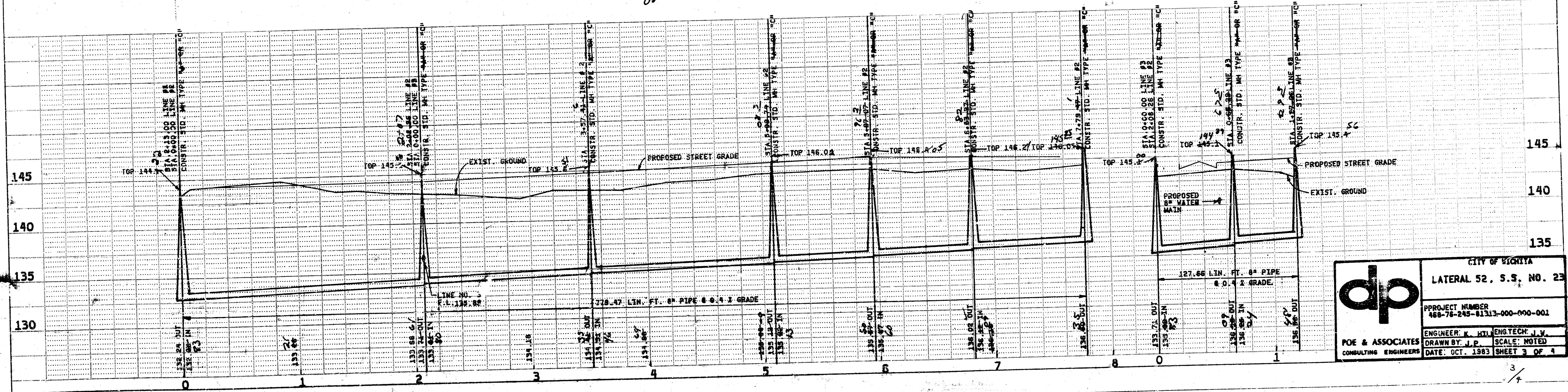
DATE	
BY	
DESIGNED	
PROF'D	
CHECKED	
IN CHARGE	
NO.	

DATE	
BY	
DESIGNED	
PROF'D	
CHECKED	
IN CHARGE	
NO.	



*As Built  
J.L.L.  
3-89*

SCALE:  
HORIZ. 1"=40'  
VERT. 1"=5'



**dp** CONSULTING ENGINEERS

CITY OF WICHITA  
LATERAL 52, S.S. NO. 23

PROJECT NUMBER  
468-76-245-01313-000-001

ENGINEER: K. HIL  
DRAWN BY: J.P.  
DATE: OCT. 1983 SHEET 3 OF 4

