

# SANITARY SEWER PLANS

## SANITARY SEWER LATERAL 60, SAN. SEWER 23 (PHASE 1)

### INDUSTRIAL AIR CENTER

#### PROJECT NO.

#### 468-76-245-81692-000-000-001

CITY OF WICHITA, KANSAS  
MICHAEL E LINDEBAK, CITY ENGINEER

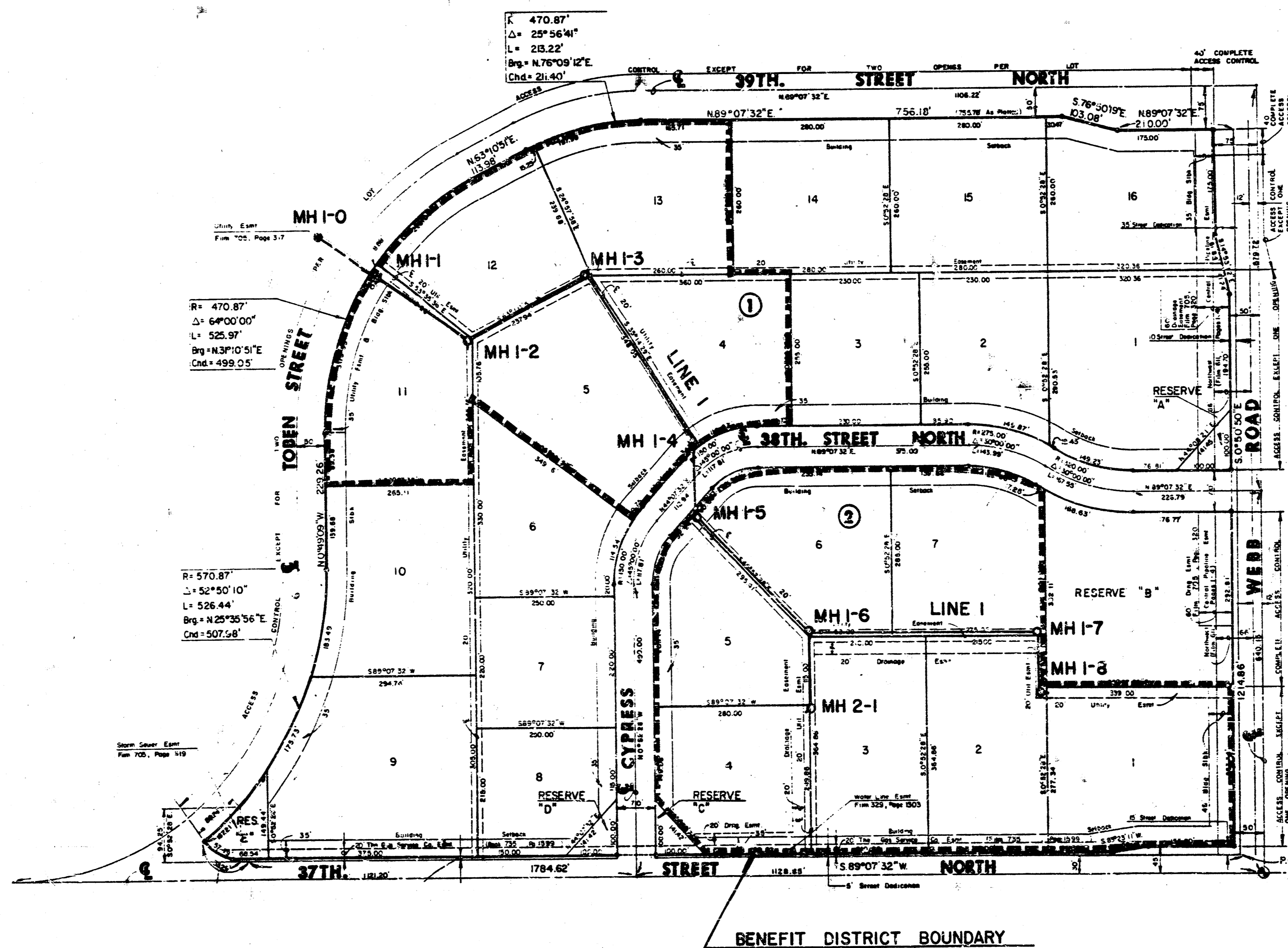
#### GENERAL NOTES

- THE CONTRACTOR SHALL BE RESPONSIBLE FOR PRESERVING PROPERTY IRONS. THE CONTRACTOR SHALL BE REQUIRED TO RE-ESTABLISH ANY PROPERTY IRONS WHICH ARE DAMAGED OR DESTROYED BY HIS CONSTRUCTION OPERATIONS. SUCH IRONS SHALL BE RE-ESTABLISHED BY A LICENSED LAND SURVEYOR OR A LICENSED PROFESSIONAL ENGINEER IN ACCORDANCE WITH STATE LAWS.
- A PORTION OF EXCESS EXCAVATED MATERIAL SHALL BE MOUND AROUND MANHOLES WHICH EXTEND MORE THAN ONE (1) FOOT ABOVE THE EXISTING GROUND. SUCH MOUNDS SHALL BE CONSTRUCTED WITH A SIX (6) FOOT DIA. METER FLAT TOP WITH A TO 1 SIDE SLOPES DOWN TO THE ORIGINAL GROUND. THE ELEVATION OF THE FLAT TOP OF THE MOUND SHALL BE 0.4 FOOT BELOW THE TOP OF THE MANHOLE.
- CONTRACTOR SHALL NOTIFY THE FOLLOWING COMPANIES PRIOR TO ANY EXCAVATION:
 

ARKLA GAS COMPANY	942-8350
BELL TELEPHONE	268-2256
CABLEVISION	269-3340
KPL COMPANY	263-7511
KANSAS GAS & ELECTRIC	261-8248
KANSAS ONE-CALL	1-800-344-7233
- EXISTING UTILITIES AND THEIR LOCATIONS, AS SHOWN ON THE PLANS, REPRESENT THE BEST INFORMATION OBTAINABLE FOR DESIGN. LOCATION INFORMATION HAS BEEN OBTAINED FROM THE VARIOUS UTILITY COMPANIES AND IS EITHER FROM COMPANY RECORD DRAWINGS OR COMPANY PROVIDED FIELD LOCATIONS. THE PLAN LOCATIONS SHOWN ARE NOT GUARANTEED. ADDITIONAL EXISTING UTILITIES MAY ALSO BE ENCOUNTERED.
- ALL STUBS AND PLUGGED PIPES SHALL BE LOCATED WITH GREEN PLASTIC TAPE IN THE SAME MANNER AS RISERS.
- COST OF EXCAVATION, HAULING, AND DUMPING OF EXCESS EXCAVATION SHALL BE SUBSIDIARY TO THE PROJECT.
- PRIOR TO LAYING SEWER LINES USING EXISTING STUBS IN EXISTING MANHOLES, THE CONTRACTOR SHALL EXPOSE AND VERIFY THE ELEVATION, GRADE AND ALIGNMENT OF EXISTING STUBS AND NOTIFY THE ENGINEER OF ANY DEVIATION FROM THE PLAN. WHERE CONNECTING TO AN EXISTING MANHOLE THAT DOES NOT HAVE AN EXISTING STUB OR THE STUB IS UNSABLE DUE TO ELEVATION GRADE OR ALIGNMENT, THE CONTRACTOR SHALL RESHAPE THE EXISTING MANHOLE INVERT TO PROVIDE SMOOTH FLOW. THE COST OF RESHAPING EXISTING MANHOLE INVERTS IS INCIDENTAL TO THE PROJECT.
- RUBBLE FROM THE REMOVAL OF MISCELLANEOUS STRUCTURES AND EXCESS EXCAVATION WHICH IS TO BE WASTED SHALL BE DISPOSED OF ON SITES TO BE PROVIDED BY THE CONTRACTOR. THESE SITES SHALL BE APPROVED BY THE ENGINEER AS TO SUITABILITY, APPEARANCE AND SITE LOCATION. LOCATIONS THAT, IN THE OPINION OF THE ENGINEER, WILL LEAVE AN UNSIGHTLY APPEARANCE WILL NOT BE APPROVED.
- TREES AND SHRUBS IN PUBLIC RIGHT OF WAY WHICH ARE IN DIRECT CONFLICT WITH PROPOSED NEW CONSTRUCTION SHALL BE REMOVED BY THE CONTRACTOR WITH THE ENGINEER'S APPROVAL. TREES AND SHRUBS WHICH ARE NOTE IN DIRECT CONFLICT WITH PROPOSED NEW CONSTRUCTION SHALL BE SAVED AND PROTECTED FROM DAMAGE.
- RISER PIPE SHALL BE INSTALLED TO SERVE INDIVIDUAL LOTS OR TRACTS IN CONJUNCTION WITH NEW SANITARY SEWER CONSTRUCTION, UNLESS OTHERWISE ORDERED BY THE ENGINEER, BECAUSE OF GROUND WATER, UNSTABLE SOIL OR UNUSUALLY DEEP CONSTRUCTION. RISER LOCATIONS SHALL BE AS APPROVED BY THE PROPERTY OWNER WITH THE CONCURRENCE OF THE ENGINEER. INSTALLATION OF RISERS ON SEWERS BECAUSE OF UNUSUAL DEPTH WILL BE REQUIRED WHEN THE SEWER IS DEEPER THAN TWELVE FEET (12'). THE CONTRACTOR WILL BE REQUIRED TO FILE WRITTEN DOCUMENTATION WITH THE ENGINEER IN A FORM APPROVED BY THE EN. INDICATING THE LOCATIONS WHERE RISERS ARE TO BE INSTALLED AS REQUESTED BY THE PROPERTY OWNER OR HIS AUTHORIZED REPRESENTATIVE. RISER PIPE CONSTRUCTION SHALL CONFORM TO THE REQUIREMENTS AS SHOWN ON THE STANDARD RISER DETAIL SHEET.

#### BENCH MARKS

- B.M. #1 City of Wichita BM Disc 53' N 38' W of centerline 37th St. N and Hebb Road. Elev. = 227.52
- B.M. #2  cut on centerline W. side of the middle inlet of 3 at the NW corner of Lot 12, Block 1, Industrial Air Center. Elev. = 224.96



#### INDEX TO DRAWINGS

SHEET NO.	DESCRIPTION
1	TITLE SHEET
2	LINE 1
3	LINE 182
4	VERTICAL RISER DETAIL
5	SEWER APPURTENANCES DETAILS
6	FINAL PLAT

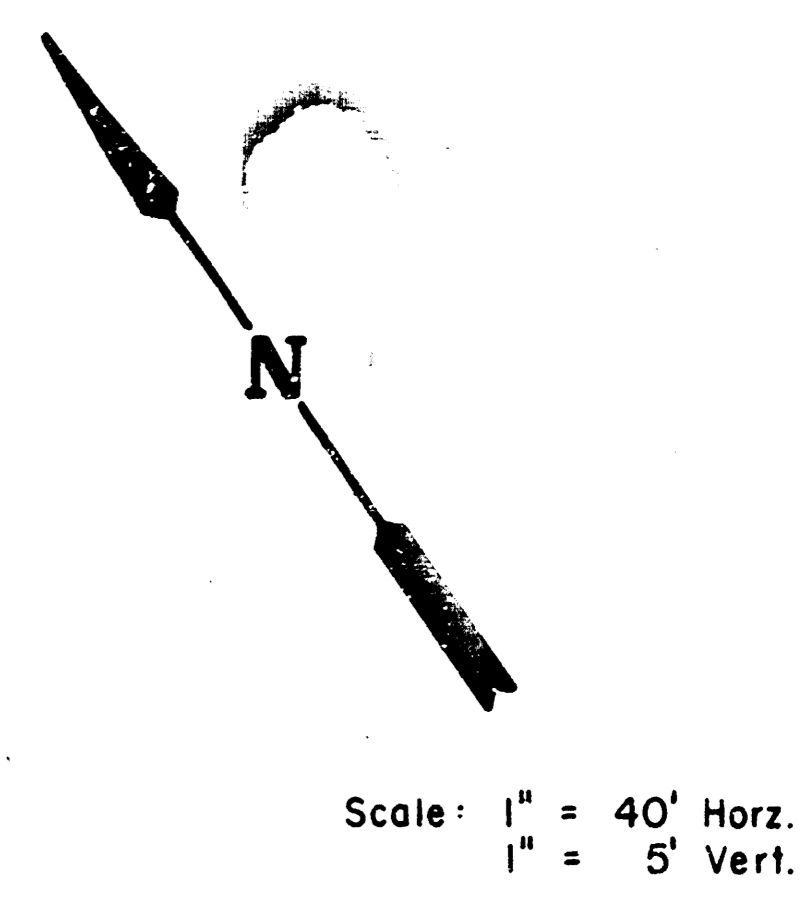
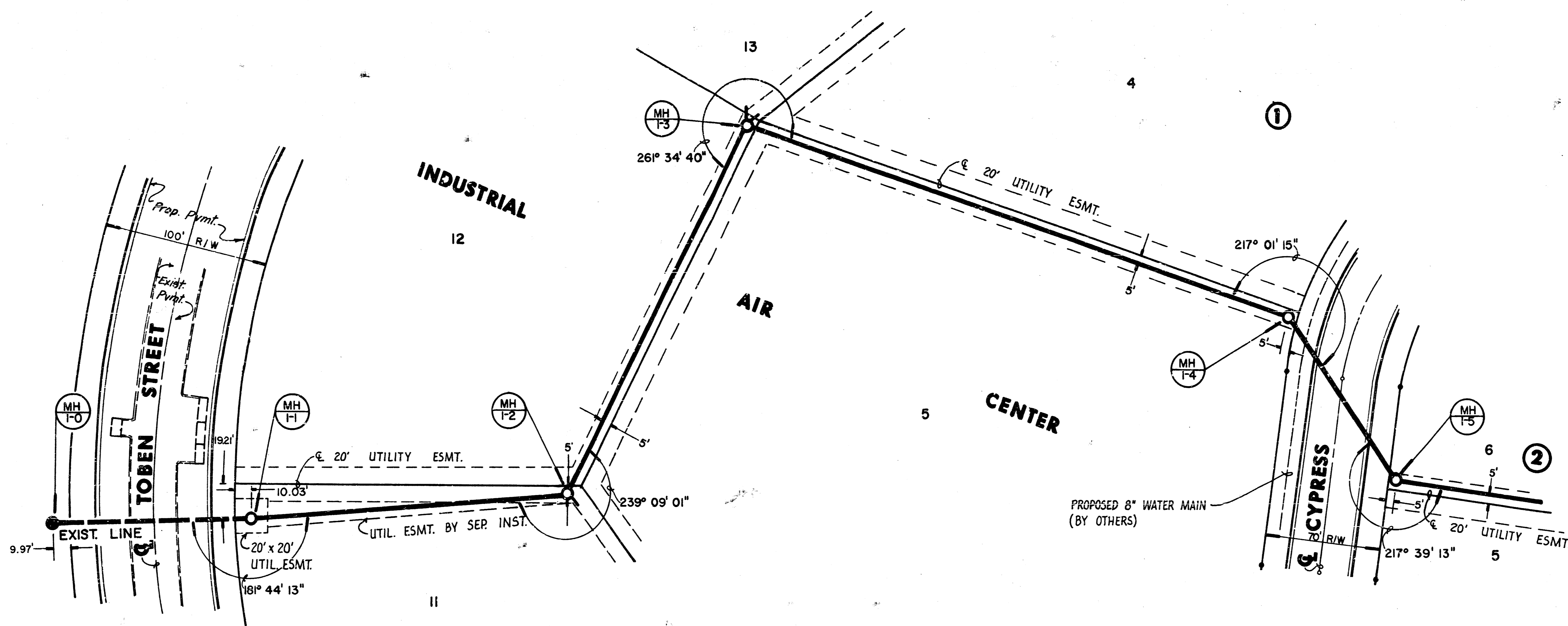
*AS BUILT  
RPL  
12-87*



<b>MK ECS</b>	<b>INDUSTRIAL AIR CENTER SANITARY SEWER PLANS</b>	Design K.K.I./B.F.G. Drawn by K.S.M. Checked by K.H.B. Date 6-09-87 Job No.
	MID-KANSAS ENGINEERING CONSULTANTS PA 3500 NORTH ROCK ROAD BUILDING #800 WICHITA, KANSAS 67226	

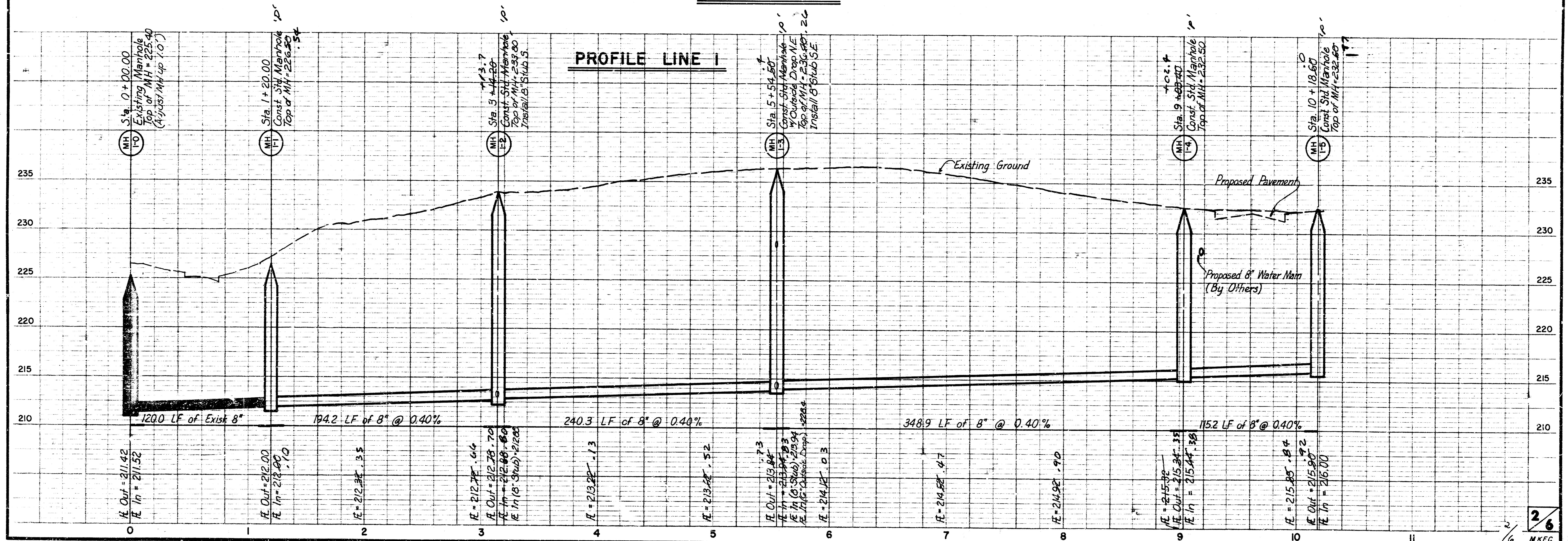
682-6561

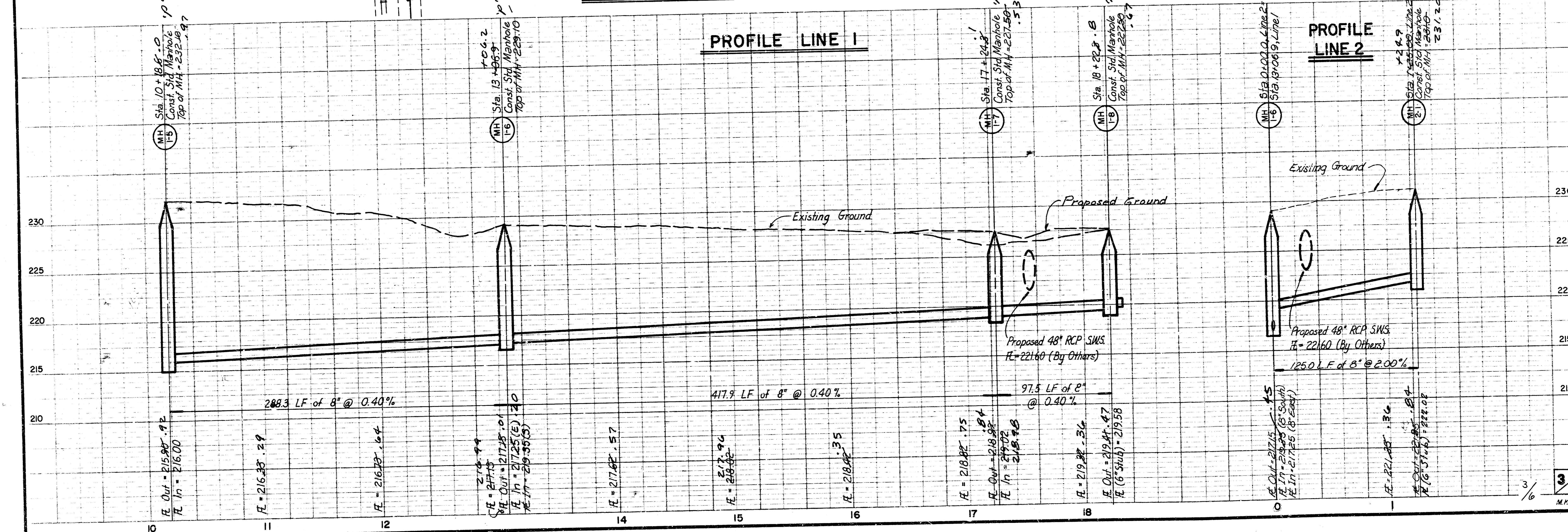
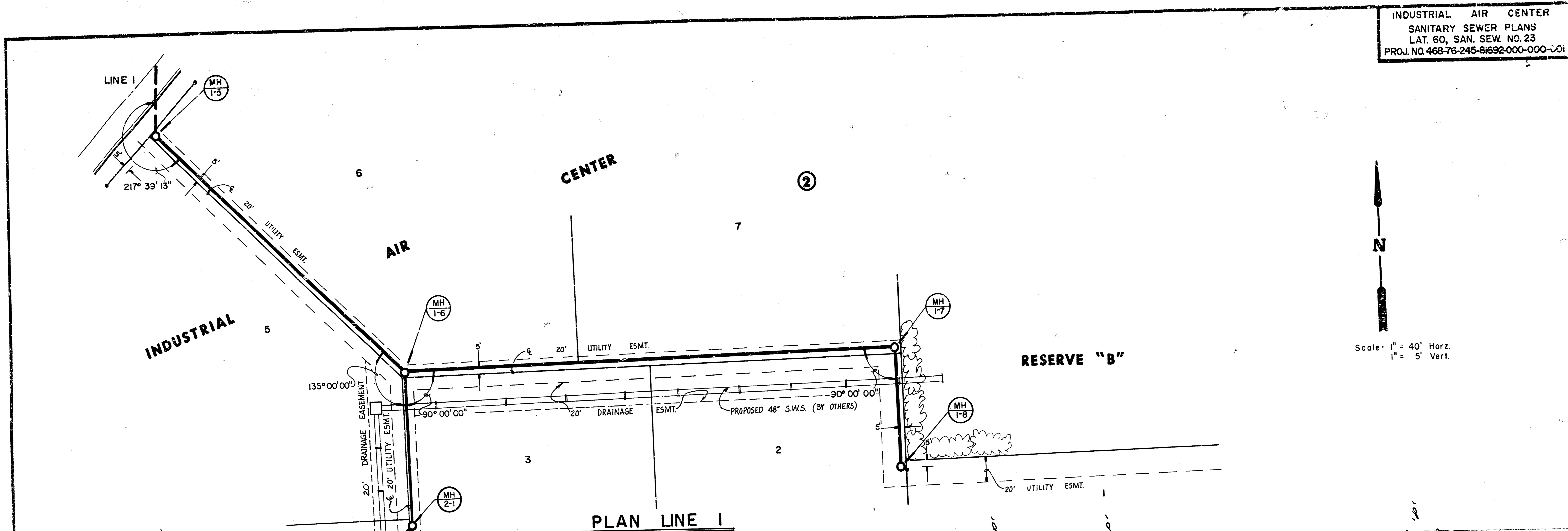
Sheet **1**  
of **6**



RISER STATIONS	DSFL	USFL
STA. 2+20.0, LT.	212.40	223.50
STA. 2+20.0, RT.	212.40	223.50
STA. 7+30.0, LT.	214.64	227.50
STA. 7+30.0, RT.	214.64	227.50

PLAN LINE I

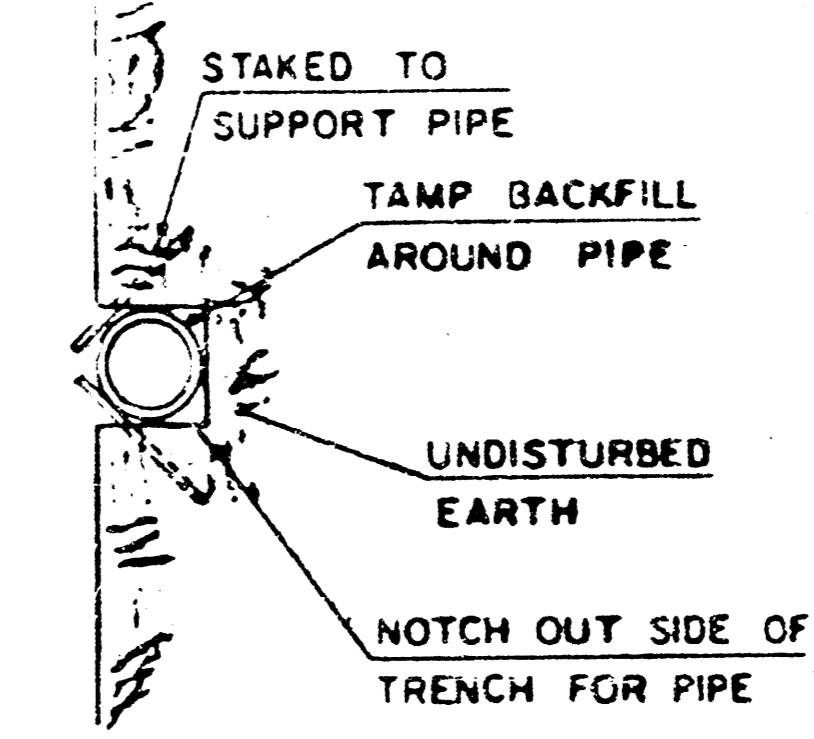




# VERTICAL RISER DETAIL

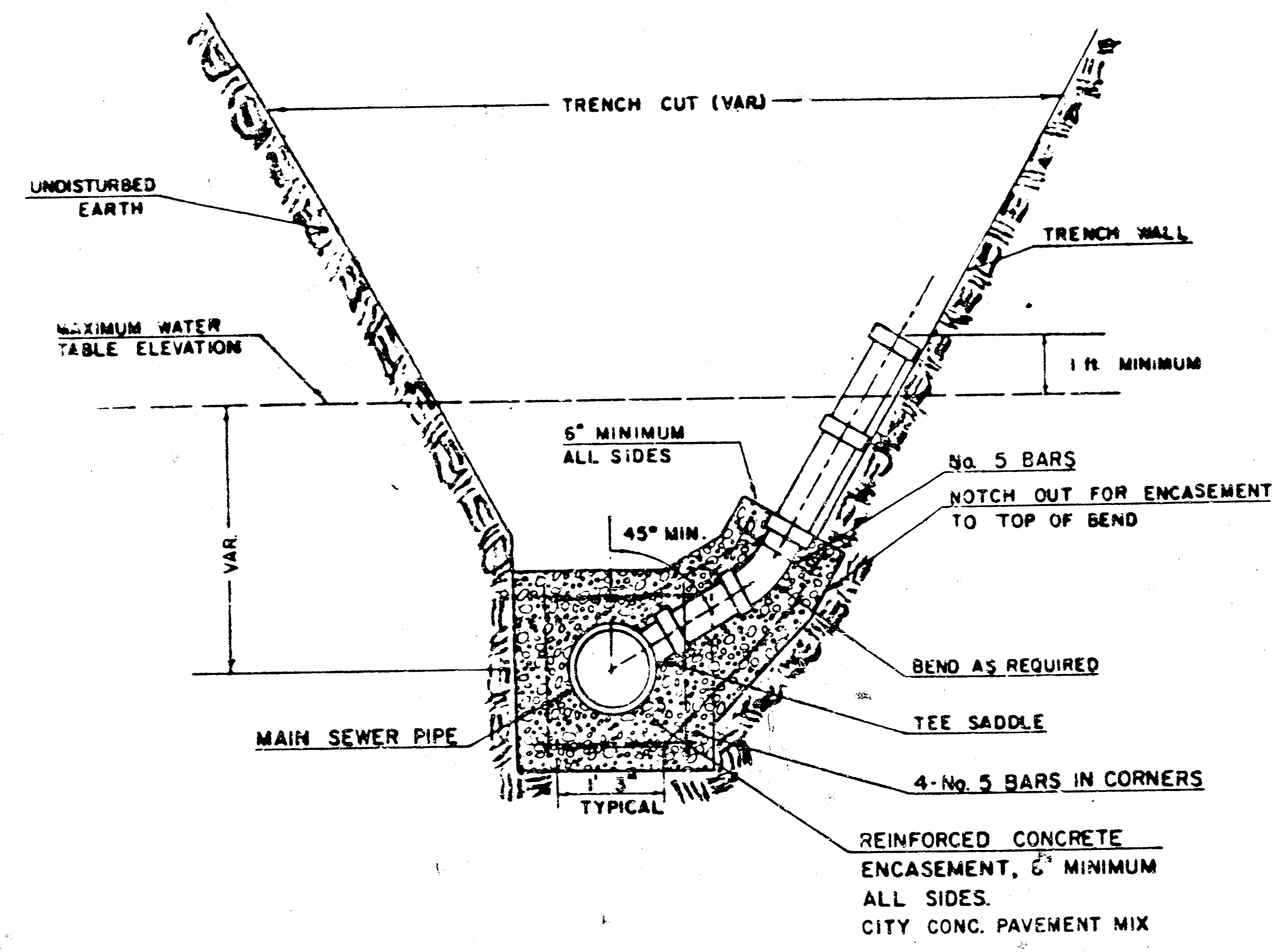
ADOPTED AS STANDARD DESIGN  
BY

CITY OF WICHITA, KANSAS



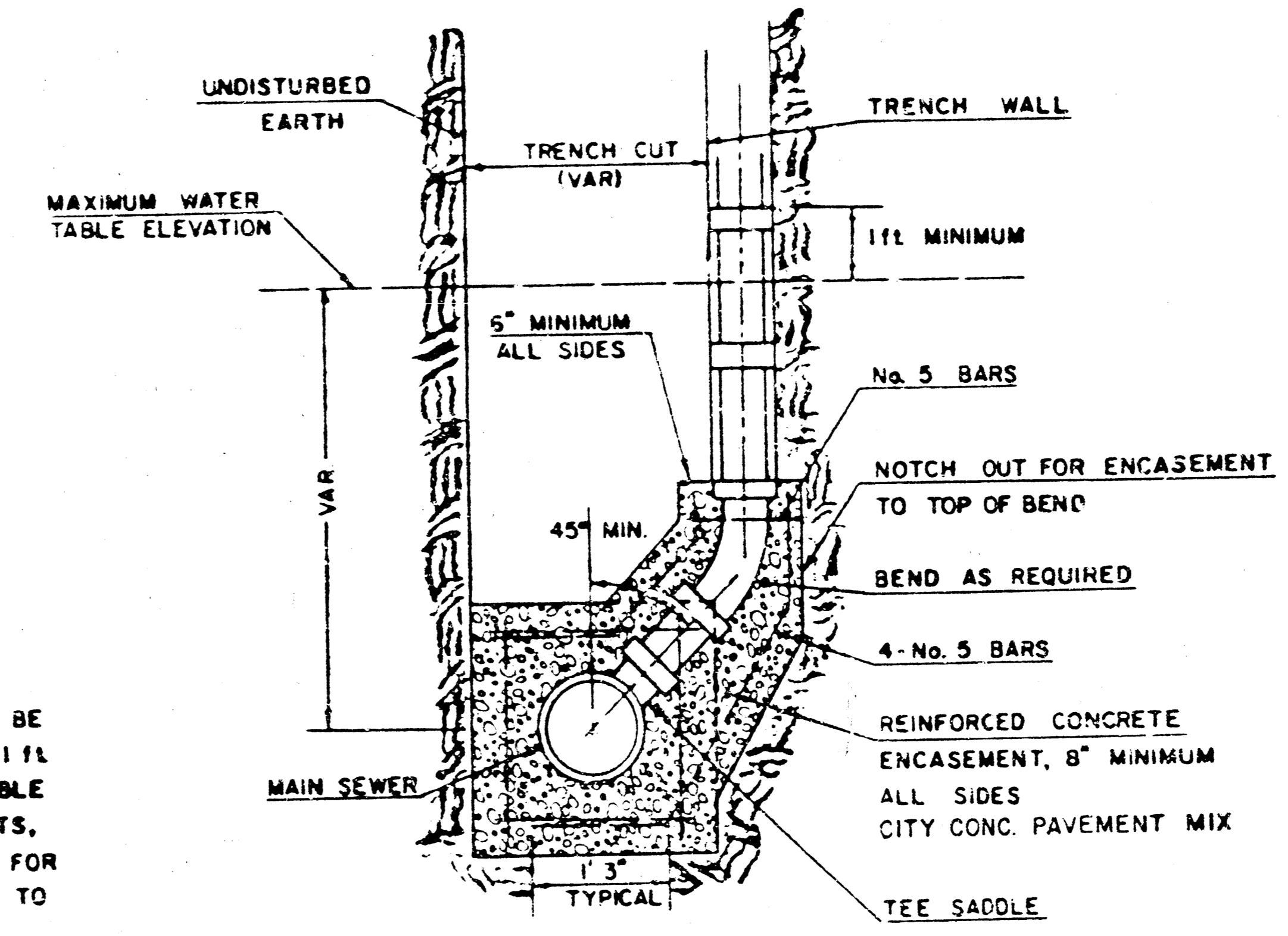
**GENERAL NOTE**

RISERS SHALL BE INSTALLED TO SERVE ALL LOTS OR TRACTS WHEN THE MAIN SEWER PIPE IS BELOW THE WATER TABLE. RISERS SHALL ALSO BE INSTALLED TO SERVE ALL LOTS AND TRACTS WHEN THE MAIN SEWER LINE DEPTH IS 10' OR MORE THAT WOULD MAKE THE BUILDING SEWER LINE CONNECTION DIFFICULT. INSTALLATION OF RISERS BECAUSE OF MAIN LINE SEWER DEPTH SHALL BE AS APPROVED BY THE ENGINEER. THE LOCATION OF RISERS TO SERVE UNPLUMBED PROPERTY SHALL BE APPROVED BY THE PROPERTY OWNER. PIPE STUBS SHALL BE INSTALLED IN MANHOLES WHERE LOCATIONS OF MANHOLES WILL PROVIDE SATISFACTORY SERVICE CONNECTIONS AS DETERMINED BY THE FIELD ENGINEER. THE VERTICAL DISTANCE BETWEEN THE FLOW LINE OF THE MANHOLE PIPE STUB AND THE FLOW LINE OF THE MAIN SEWER LINE SHALL NOT EXCEED 5 FT. MANHOLE PIPE STUBS SHALL NOT BE SET BELOW AN ELEVATION WHICH WILL PERMIT THE TOP OF THE INSIDE OF THE STUB TO WATER THE TOP OF THE INSIDE OF THE MAIN SEWER PIPE. PIPE STUBS AND RISERS INSTALLED TO SERVE COMMERCIAL OR INDUSTRIAL PROPERTY SHALL BE 6 INCH. PIPE STUBS AND RISERS INSTALLED TO SERVE RESIDENTIAL PROPERTY MAY BE EITHER 4 INCH OR 6 INCH DEPENDING UPON THE AVAILABLE GRADE AND THE SIZE OF THE LOT AS DETERMINED BY THE FIELD ENGINEER. ENCASUREMENT OF VERTICAL CLAY MAIN SEWER PIPE SHALL EXTEND TO THE FIRST JOINT IN THE MAIN SEWER CLAY PIPE ON EACH SIDE OF THE RISER INSTALLATION. ENCASUREMENT OF A.S.S. COMPOSITE OR P.V.C. MAIN SEWER PIPE SHALL EXTEND A MINIMUM OF 3 FT. ON BOTH SIDES OF THE CENTRAL LINE OF THE RISER. FOUR INCH AND SIX INCH RISER PIPE SHALL BE ENCASED WITH CONCRETE TO THE TOP OF THE BEND AS INDICATED IN THE DRAWINGS. FOUR INCH AND SIX INCH CLAY PIPE USED FOR RISERS SHALL BE EXTRA STRENGTH PIPE CONFORMING TO THE REQUIREMENTS OF THE LATEST REVISION OF A.S.T.M. DESIGNATION C700 WITH COMPRESSION JOINTS AS SPECIFIED FOR CLAY PIPE IN THE STANDARD SPECIFICATIONS. FOUR INCH AND SIX INCH A.S.S. OR P.V.C. PIPE SHALL BE PIPE APPROVED FOR USE IN THE CITY BY THE CHIEF PLUMBING AND MECHANICAL INSPECTOR FOR THE CENTRAL INSPECTION DIVISION OF THE DEPARTMENT OF HOUSING AND ECONOMIC DEVELOPMENT. LOCATIONS OF THE ENDS OF THE RISERS SHALL BE MARKED BY FASTENING GREEN COLORED PLASTIC TAPE TO THE END OF THE RISER WHICH SHALL BE EXTENDED TO THE GROUND SURFACE AS THE EXCAVATION IS BACKFILLED SUCH THAT THE COLORED TAPE WILL BE VISIBLE WHEN THE PROJECT IS COMPLETED. THE ENDS OF THE RISER PIPE AND MANHOLE STUBS SHALL BE CAPPED OR PLUGGED USING FITTINGS FURNISHED BY THE MANUFACTURER OF THE PIPE. CONTRACTOR'S METHODS FOR SUPPORTING AND BACKFILLING RISER PIPE SHALL BE APPROVED BY THE ENGINEER.



TYPICAL RISER FOR SLOPING TRENCH WALLS

**NOTE:**  
TOP OF 4" OR 6" RISER PIPE TO BE EXTENDED TO AN ELEVATION OF 1 FT. MINIMUM ABOVE THE WATER TABLE ELEVATION, WHEN WATER EXISTS, OR TO AN ELEVATION SUITABLE FOR PROVIDING SERVICE TO THE LOT TO BE SERVED AND THEN PLUGGED.



TYPICAL RISER FOR VERTICAL TRENCH WALLS

FURNISHING AND INSTALLING RISERS SHALL BE PAID FOR AT THE UNIT PRICES BID FOR 4" PIPE, 6" PIPE AND REINFORCED CONCRETE ENCASUREMENT FOR THE VARIOUS MAIN SEWER PIPE SIZES INDICATED WHICH PRICE SHALL INCLUDE ALL COSTS FOR COMPLETION OF THIS ITEM INCLUDING SADDLES, BENDS, CONCRETE, REINFORCING STEEL, CAPS OR PLUGS, AND ALL OTHER NECESSARY MATERIALS OR WORK. CONCRETE ENCASUREMENT OF THE RISER PIPE TO THE TOP OF THE BEND AS SHOWN BY THE DRAWINGS WILL NOT BE PAID FOR DIRECTLY AND THE COST FOR THIS WORK SHALL BE CONSIDERED AS SUBSIDIARY TO THE OTHER ITEMS OF WORK.

THE PROJECT INSPECTOR SHALL REPORT ON INSPECTOR CARDS THE LOCATION OF ALL RISERS CONSTRUCTED AS MEASURED FROM THE NEAREST MANHOLE, THE DIRECTION OF SERVICE, THE ELEVATION OF THE TOP OF THE RISER, AND THE PAY QUANTITIES INVOLVED. THE PROJECT INSPECTOR SHALL ALSO REPORT ON INSPECTOR CARDS THE LOCATION, DIRECTION OF SERVICE, AND SIZE OF ALL STUBS INSTALLED IN MANHOLES.

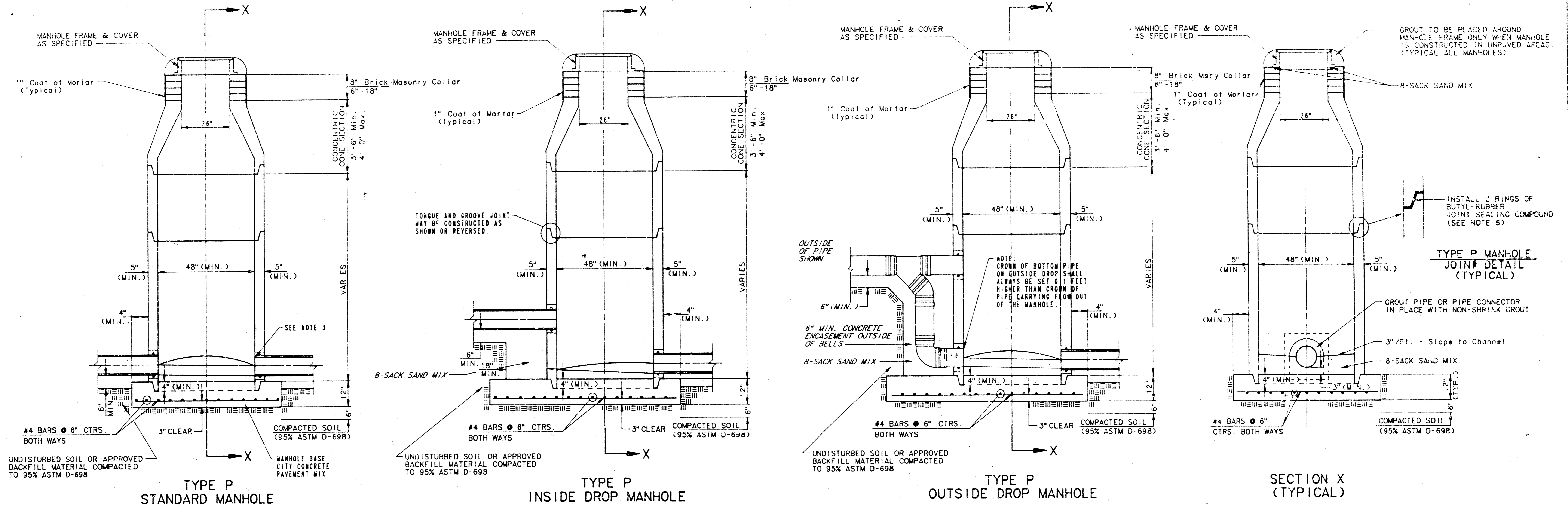
FILMED FROM THE BEST AVAILABLE COPY

# SEWER APPURTENANCES DETAILS

## ADOPTED AS STANDARD DESIGN

### BY

## CITY OF WICHITA



**GENERAL NOTES**  
**PRECAST MANHOLE NOTES**

1. ALL PRECAST CONCRETE MANHOLE SECTIONS SHALL CONFORM TO THE LATEST REVISION OF A.S.T.M. C478 AS MODIFIED BY THE SPECIFICATIONS.
2. NON-SHRINK GROUT SHALL BE NON-METALLIC TYPE.
3. APPROVED FLEXIBLE WATERSTOP GASKETS SHALL BE INSTALLED TO JOIN THE SEWER TO THE MANHOLE WALL WHEN A.B.S. COMPOSITE PIPE OR P.V.C. PIPE IS USED. FOR OTHER TYPES OF PIPE THE SEWER SHALL BE GROUTED IN PLACE WITH NON-SHRINK GROUT. THE SEWER PIPE SHALL BE SUPPORTED WITH CONCRETE ENCASEMENT A MINIMUM OF 3 FEET FROM THE MANHOLE WALL AND TO THE FIRST JOINT FOR V.C.P. SUCH THAT THE JOINT REMAINS FLEXIBLE.
4. ALL INSIDE SURFACES OF THE CONCRETE MANHOLE WHICH WOULD BE EXPOSED TO SEWER GAS SHALL BE COATED WITH 2 COATS TWEMEC SERIES 66 HI-BUILD EPOXOLINE, DRY THICKNESS OF 8 MILS (MIN.)
5. EXTERIOR MANHOLE WALLS SHALL BE COATED WITH 1 COAT MOBILARMA 633 BITUMINOUS COATING.
6. JOINT SEALING COMPOUND SHALL BE KENT SEAL NO. 2 OR APPROVED EQUAL.
7. PRECAST MANHOLES SHALL BE SET AT LEAST 4 INCHES INTO THE MANHOLE BASE.
8. TOP OF MANHOLE FLOOR SLAB SHALL BE AT LEAST 3 INCHES BELOW THE FLOW LINE OF THE OUTLET PIPE TO INSURE SUFFICIENT MINIMUM THICKNESS OF SHAPED INVERT.
9. LIFTING HOLES SHALL BE FILLED WITH NON-SHRINK GROUT AND THE INTERIOR SURFACE COATED AS SPECIFIED.
10. MORTAR USED IN MASONRY CONSTRUCTION SHALL CONTAIN 8 SACKS OF CEMENT PER CUBIC YARD. CONCRETE USED IN MANHOLE BASES SHALL CONFORM TO THE REQUIREMENTS OF CONCRETE FOR CONCRETE PAVING SPECIFICATIONS USING CITY CONCRETE PAVEMENT MIX WITHOUT AIR ENTRAINING ADJUSTURE. MORTAR SHALL BE PLACED AROUND THE MANHOLE RING AS SHOWN ON THE DRAWINGS WHEN MANHOLES ARE CONSTRUCTED IN UNPAVED AREAS. MANHOLES CONSTRUCTED WHERE PIPE SIZES ARE SMALLER THAN 24" SHALL HAVE AN INSIDE DIAMETER OF 4". MANHOLES CONSTRUCTED WHERE PIPE SIZES ARE 24" OR LARGER SHALL HAVE AN INSIDE DIAMETER OF 5". COMPLETELY MANHOLE SHALL BE WITHOUT LEAKS AND WATER TIGHT.
11. REINFORCING STEEL SHALL BE INSTALLED IN THE MANHOLE BASES AND SHALL CONSIST OF NO. 4 BARS PLACED ON 4" CENTERS IN BOTH DIRECTIONS. THE MANHOLE BASE REINFORCEMENT SHALL BE PLACED AT LEAST 3" ABOVE THE BOTTOM OF THE MANHOLE BASE. ALL COSTS FOR FURNISHING AND INSTALLING REINFORCING STEEL SHALL BE INCLUDED IN THE UNIT PRICE BID FOR THE MANHOLE.
12. OPENINGS SHALL BE CUT INTO THE MANHOLE WALL WHEN OUTSIDE DROPS ARE CONSTRUCTED ON EXISTING MANHOLES. SUCH OPENINGS CUT INTO EXISTING MANHOLES SHALL BE AS SMALL AS PRACTICAL TO FACILITATE INSTALLING AND GROUTING THE NEW PIPE IN PLACE. WATERSTOP GASKETS SHALL BE USED WITH P.V.C. AND A.B.S. COMPOSITE PIPE. THE NEW PIPE SHALL BE GROUTED INTO THE OPENING USING AN APPROVED NONSHRINK GROUT FOR THE FULL MANHOLE WALL THICKNESS. THE EXTERIOR OF THE COMPLETED CONNECTION SHALL BE SEALED WITH AN APPROVED BITUMINOUS COATING SUCH THAT THE CONNECTION WILL BE WATER TIGHT. FLOOR OF MANHOLE SHALL BE MODIFIED TO FORM NEW FLOW CHANNEL FOR THE NEW CONNECTION AS INDICATED BY THE DRAWING. THIS WORK, INCLUDING MODIFICATION OF MANHOLE FLOOR, SHALL BE PAID FOR AT THE UNIT PRICE BID FOR OUTSIDE DROP STACK CONSTRUCTED ON EXISTING MANHOLE.
13. THE FLOORS OF ALL MANHOLES SHALL BE SHAPED WITH FLOW CHANNELS SUCH THAT THE MANHOLES WILL BE SELF CLEANING AND FREE OF AREAS WHERE SOLIDS COULD BE DEPOSITED AS SEWAGE FLOWS THROUGH THE MANHOLE FROM ALL INLET PIPES TO THE OUTLET PIPE. FLOW CHANNELS SHALL BE FORMED TO MATCH THE BOTTOM HALVES OF THE INFLOWING PIPES AND THE OUTFLOWING PIPE AS SHOWN BY THE DRAWINGS EXCEPT FOR INSIDE DROP MANHOLES. FLOW CHANNELS FOR INSIDE DROP MANHOLES SHALL BE CONSTRUCTED AS INDICATED BY THE DRAWING. MANHOLE FLOORS SHALL HAVE SLOPES OF 3 INCHES PER FOOT IN THE AREAS OUTSIDE OF THE FLOW CHANNELS SLOPED TOWARD THE FLOW CHANNELS. PIPES LAID THROUGH MANHOLES SHALL HAVE THE TOP HALF REMOVED TO REVEAL LINES FOR THE FULL INSIDE DIAMETER OF THE MANHOLE. MANHOLE FLOORS SHALL THEN BE SHAPED AROUND THE BOTTOM HALF OF THE PIPE WHICH FORMS THE FLOW CHANNEL.
14. PIPES INSTALLED WITHIN THE EXCAVATION MADE FOR THE MANHOLE SHALL BE CRADLED WITH CONCRETE TO THE LIMITS OF THE MANHOLE EXCAVATION. WHEN CLAY PIPE IS USED, THE CRADLE SHALL EXTEND TO THE FIRST JOINT OUTSIDE THE MANHOLE. THE CRADLE SHALL BE TERMINATED AT THE CLAY PIPE JOINT IN A MANNER WHICH WILL MAINTAIN THE FLEXIBILITY OF THE JOINT. COST OF CRADLE WITHIN MANHOLE EXCAVATION OR TO CLAY PIPE JOINTS ADJACENT TO MANHOLE SHALL BE INCLUDED IN THE UNIT PRICE BID FOR THE MANHOLE.
15. MANHOLE COVER CASTINGS AND MANHOLE FRAME CASTINGS SHALL CONFORM TO THE REQUIREMENTS AS INDICATED IN THE STANDARD SPECIFICATIONS AND AS SHOWN IN THE STANDARD DETAIL DRAWING.
16. THE VERTICAL DROP IN INSIDE DROP MANHOLES SHALL NOT EXCEED 4' FOR INFLOWING PIPES SIZED 12" OR SMALLER AND 2' FOR INFLOWING PIPES LARGER THAN 12". THE CROWNS OF INFLOWING PIPES SHALL NEVER BE SET LOWER THAN THE CROWN OF THE OUTFLOWING PIPE.
17. STANDARD MANHOLES AND STANDARD INSIDE DROP MANHOLES SHALL BE BID AS STANDARD MANHOLES FOR THE TYPE AND DIAMETER INDICATED. OUTSIDE DROP MANHOLES SHALL BE BID AS STANDARD OUTSIDE DROP MANHOLES FOR THE TYPE AND DIAMETER INDICATED. ALL MANHOLE DIAMETERS WILL BE 4' UNLESS INDICATED OTHERWISE.
18. A BRICK MASONRY COLLAR SHALL BE INSTALLED BETWEEN THE CAST IRON FRAME AND THE CONCENTRIC CONE. THE COLLAR WILL HAVE 8" WALLS AND A VERTICAL HEIGHT OF 6" MINIMUM AND 18" MAXIMUM. A 1" COAT OF MORTAR WILL BE PLASTERED ON THE OUTSIDE OF THE COLLAR.

FILMED FROM THE BEST AVAILABLE COPY.....

FINAL PLAT OF  
**INDUSTRIAL AIR CENTER**  
AN ADDITION TO WICHITA, SEDGWICK COUNTY, KANSAS

I, Kenneth H. Bengtson, a Civil Engineer in Kansas, do hereby certify that I have been in responsible charge of surveying and platting of "INDUSTRIAL AIR CENTER", an addition to Wichita, Sedgwick County, Kansas, into Lots, Blocks, Streets, and Reserves, the same being accurately set forth in the accompanying plat and described as follows:

A tract of land lying within the Southeast Quarter of Section 29, Township 26 South, Range 2 East of the 6th P.M., more particularly described as follows:

Commencing at the Southeast corner of said Section 29; thence N 0° 50' 50" W, 30.00 feet; thence S 89° 07' 32" W, 40.00 feet to the point of beginning; thence S 89° 07' 32" W, 1784.62 feet parallel; and 30.00 feet North of the south line of said Southeast Quarter to the beginning of a curve to the right; thence 91.78 feet along said curve having a radius of 110.00 feet, a central angle of 47° 26' 36", a long chord of 88.50 feet bearing N 67° 09' 10" W; to a point on a curve to the left, said point lying on the East right-of-way line of Toben Street as platted in Toben Second Addition, an addition to Wichita, Sedgwick County, Kansas; thence following said East right-of-way line 526.44 feet along said curve having a radius of 570.87 feet, a central angle of 52° 50' 10", a long chord of 507.98 feet bearing N 25° 35' 56" E; thence N 0° 49' 09" W, 229.26 feet to the beginning of a curve to the right; thence 525.97 feet along said curve having a radius of 470.87 feet, a central angle of 64° 00' 00", a long chord of 499.05 feet bearing N 31° 10' 51" E; thence following the South right-of-way line of 39th Street North as platted in said Toben Second Addition N 63° 10' 51" E, 113.98 feet to the beginning of a curve to the right; thence 213.22 feet along said curve having a radius of 470.87 feet, a central angle of 25° 56' 41", a long chord of 211.40 feet bearing N 75° 09' 12" E; thence N 89° 07' 32" E, 756.18 feet; thence S 75° 50' 19" E, 103.08 feet; thence N 89° 07' 32" E, 210.00 feet; thence S 0° 50' 50" E, 1214.86 feet parallel and 40.00 feet West of the East line of said Southeast Quarter to the point of beginning.

I hereby certify that the details of this plat are correct to the best of my knowledge and belief this 15 day of April, 1987.

*Kenneth H. Bengtson*  
Kenneth H. Bengtson, P.E.  
Mid-Kansas Engineering Consultants, P.A.  
3500 N. Rock Road, Building #800  
Wichita, KS 67226

Know all men by these presents that we the undersigned property owners of the land as above set forth in the Civil Engineers Certificate, have caused the same to be surveyed and platted into Lots, Blocks, Streets, and Reserves, the same to be known as "INDUSTRIAL AIR CENTER", an addition to Wichita, Sedgwick County, Kansas. The streets are hereby dedicated to and for the use of the public. Reserves are platted for construction and maintenance of public utilities, drainage, landscaping, irrigation and entry monuments. Reserve B is also platted for recreational purposes and related structures. Reserves shall be owned and maintained by the Industrial Air Center Owners Association. Easements for the construction and maintenance of public utilities and drainage, as indicated on the accompanying plat, are hereby granted. All abutters rights of access to or from Webb Road over and across the East line of "INDUSTRIAL AIR CENTER", except for one opening each to Lot 1 and 16, Block 1 and Lot 1, Block 2 as shall be determined by the City Engineer, are hereby granted to the City of Wichita, Kansas. Also, abutters rights of access to or from Toben/39th Street North across the West line of Lots 12, 13, 14, 15 and 16, Block 1 except for two openings per lot as shall be determined by the City Engineer are hereby granted to the City of Wichita, Kansas.

*Horst K. Miller*  
M & H Investments, Inc.  
Horst K. Miller, President

STATE OF KANSAS )  
SEDGWICK COUNTY )  
Be it remembered that on this 15 day of April, 1987, before me a Notary Public in and for said State and County, came Horst K. Miller, President, M & H Investments, Inc., to me personally known to be the same person who executed the foregoing instrument of writing and duly acknowledged the execution of the same. In testimony whereof I have hereunto set my hand and affixed my notarial seal the day and year above written.

*Kathryn S. Bauman*  
Kathryn S. Bauman, Notary Public  
My Appointment Expires: 1-24-91

This plat of "INDUSTRIAL AIR CENTER" has been submitted to and approved by the Wichita-Sedgwick County Metropolitan Area Planning Commission, Wichita, Kansas.

Dated this 30th day of April, 1987.

WICHITA-SEDGWICK COUNTY METROPOLITAN AREA PLANNING COMMISSION  
John Terry Moore, Chairman  
Marvin S. Krout, Secretary

This plat approved and all dedications shown hereon, if any, accepted by the City Council of the City of Wichita, Kansas, this \_\_\_\_\_ day of \_\_\_\_\_, 1987.

Robert G. Knight, Mayor  
Dale E. Rea, Deputy City Clerk  
Entered on transfer record this \_\_\_\_\_ day of \_\_\_\_\_, 1987.  
Don Wright, County Clerk

STATE OF KANSAS )  
SEDGWICK COUNTY )  
This is to certify that this instrument was filed for record in the Register of Deeds office this day of \_\_\_\_\_, 1987.

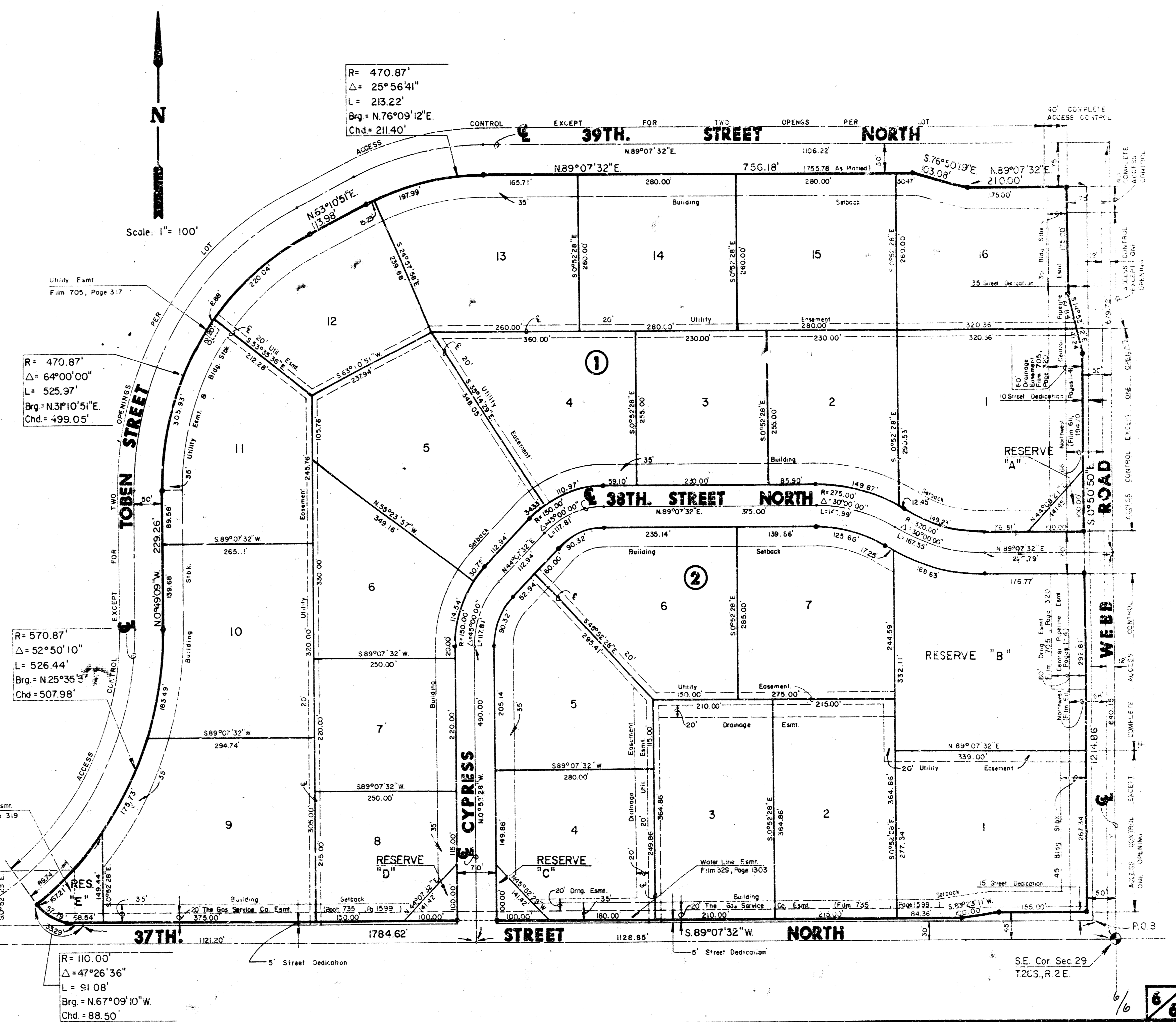
Fat Kettler, Register of Deeds  
Ed Resa, Deputy

We, the Kansas State Bank and Trust Company, Wichita, Kansas, mortgages on the above described property, do hereby consent to the plat of "INDUSTRIAL AIR CENTER".

KANSAS STATE BANK AND TRUST COMPANY, WICHITA, KANSAS  
By: *Wm. R. Summers*  
Wm. R. Summers, Senior Vice-President

STATE OF KANSAS )  
SEDGWICK COUNTY )  
Be it remembered that on this 16 day of May, 1987, before me a Notary Public in and for said State and County, came *Wm. R. Summers*, on behalf of Kansas State Bank and Trust Company, Wichita, Kansas, to me personally known to be the same person who executed the foregoing instrument of writing and duly acknowledged the execution of the same. In testimony whereof I have hereunto set my hand and affixed my notarial seal the day and year above written.

*Susan J. Houlik*  
Susan J. Houlik, Notary Public  
My Appointment Expires: 11-25-89



FILMED FROM THE BEST AVAILABLE COPY....