

SANITARY SEWER PLANS

LATERAL 70 SAN. SWR. 23

PROJECT NO.
468-76-245-82054-000-000-001

CITY OF WICHITA, KANSAS
MICHAEL E. LINDEBAK, CITY ENGINEER
INDEX NO. 740456

GENERAL NOTES

1. ALL CONSTRUCTION AND MATERIALS TO COMPLY WITH CITY OF WICHITA SPECIFICATIONS AND STANDARDS.
2. THE CONTRACTOR SHALL BE RESPONSIBLE FOR PRESERVING PROPERTY IRONS. THE CONTRACTOR SHALL BE REQUIRED TO RE-ESTABLISH ANY PROPERTY IRONS WHICH ARE DAMAGED OR DESTROYED BY HIS CONSTRUCTION OPERATIONS. SUCH IRONS SHALL BE RE-ESTABLISHED BY A LICENSED LAND SURVEYOR IN ACCORDANCE WITH STATE LAWS.
3. CONTRACTOR WILL BE REQUIRED TO PROVIDE A MINIMUM ADVANCE NOTICE OF TWENTY-FOUR (24) HOURS TO UTILITY COMPANIES PRIOR TO STARTING ANY EXCAVATION AS FOLLOWS:

KANSAS - ONE-CALL	1-800-344-7233
-------------------	----------------

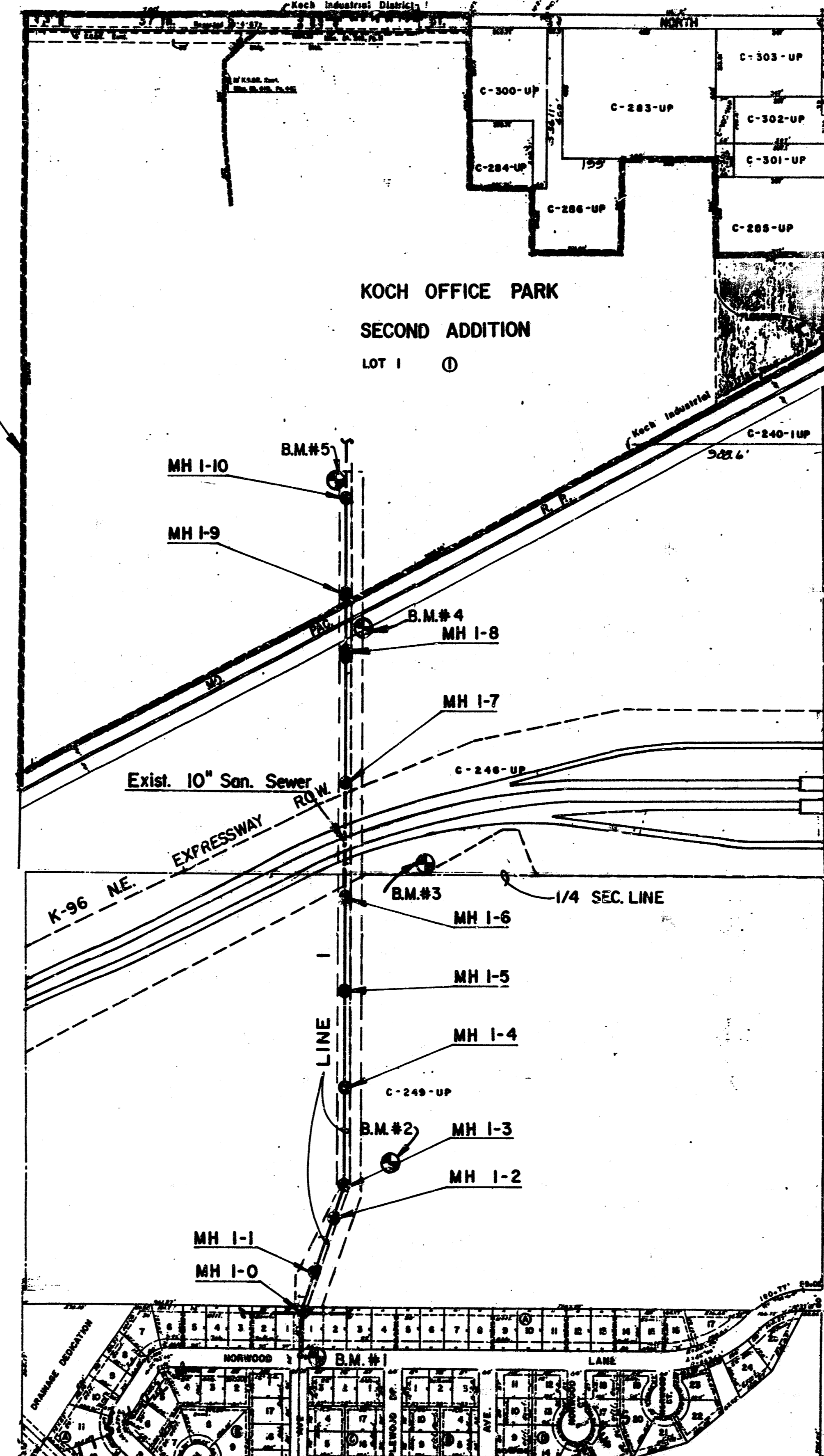
THE CONTRACTOR MUST NOTIFY THE FOLLOWING IN CASE OF EMERGENCY:

ARKLA GAS COMPANY	942-8350 or 263-8161
BELL TELEPHONE	1-316-571-2611
CABLEVISION	262-4270 of 262-2061
KPL GAS SERVICE COMPANY	263-7511
KANSAS GAS & ELECTRIC	264-1141
CITY OF WICHITA WATER DEPARTMENT	268-4908
CITY OF WICHITA SEWER MAINTENANCE	268-4071
4. EXISTING UTILITIES AND THEIR LOCATIONS, AS SHOWN ON THE PLANS, REPRESENT THE BEST INFORMATION OBTAINABLE FOR DESIGN. LOCATION INFORMATION HAS BEEN OBTAINED FROM THE VARIOUS UTILITY COMPANIES AND IS EITHER FROM COMPANY RECORD DRAWINGS OR COMPANY PROVIDED FIELD LOCATIONS. THE PLAN LOCATIONS SHOWN ARE NOT GUARANTEED. ADDITIONAL EXISTING UTILITIES MAY ALSO BE ENCOUNTERED.
5. ALL STUBS AND PLUGGED PIPES SHALL BE LOCATED WITH GREEN PLASTIC TAPE IN THE SAME MANNER AS RISERS.
6. COST OF EXCAVATION, HAULING, RIGHT OF WAY CLEARING AND DUMPING OF EXCESS EXCAVATION SHALL BE SUBSIDIARY TO THE PROJECT.
7. REMOVE AND STORE TOPSOIL; REPLACE TOPSOIL IN FINAL GRADING PROCESS. THE COST OF THIS WORK IS TO BE INCLUDED IN THE BID OF CLEARING AND RESTORATION OF THE RIGHT-OF-WAY.

BENCH MARKS

- | | |
|-------|--|
| BM #1 | "X" cut on TC on E. side of Driveway @ 4302 Norwood
Elev. = 160.205 |
| BM #2 | RR spike in W. face 5" Hackberry Tree @ 170' Rt. of Sta. 4+92
Elev. = 164.36 |
| BM #3 | RR spike in N. face 24" Mulberry Tree @ 366' Rt. of Sta. 14+13
Elev. = 168.04 |
| BM #4 | RR spike in the NW face of 15" stump @ 46.5' Rt. of Sta. 20+83
Elev. = 173.25 |
| BM #5 | "X" cut on TC @ 10' Lt. of Sta. 26+00
Elev. = 178.56 |

BENEFIT DISTRICT BOUNDARY



Scale: 1" = 300'

INDEX TO DRAWINGS

SHEET NO.	DESCRIPTION
1	TITLE SHEET
2-4	PLAN & PROFILE, LINE 1
5	RAILROAD CROSSING PLAN & PROFILE

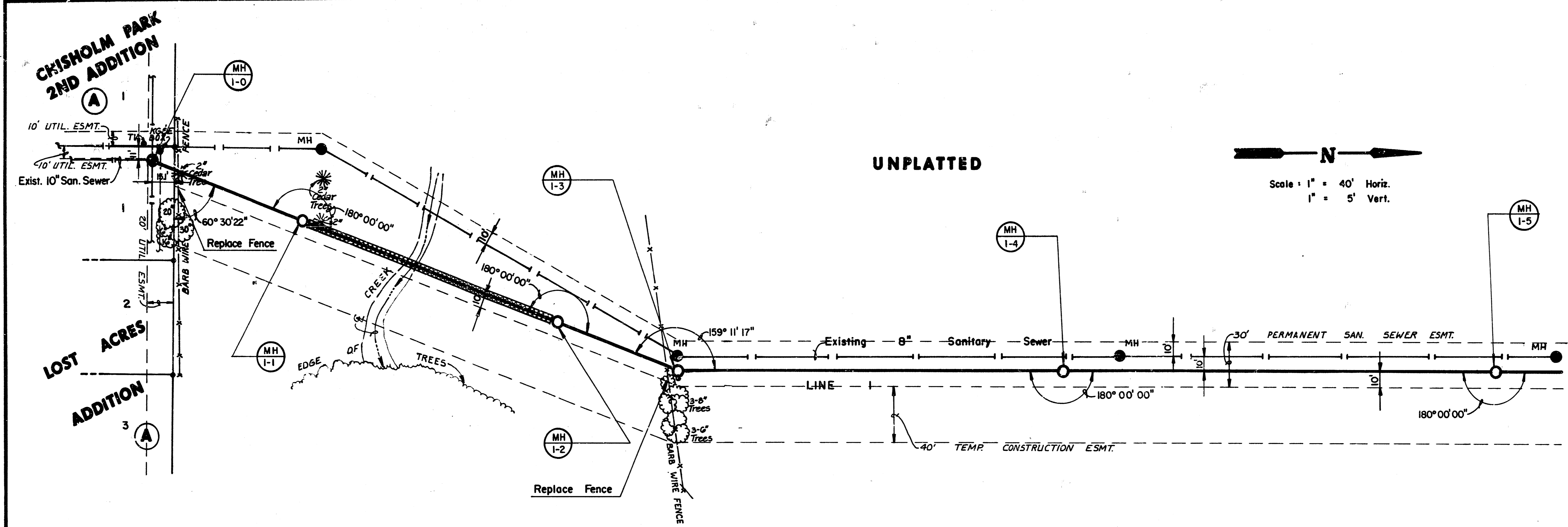


*Booked Per Plans
BPL
5-91*

	LATERAL 70 SAN. SWR. 23	Checked by DSS
	SANITARY SEWER PLANS	Reviewed by KSM
MID-KANSAS ENGINEERING CONSULTANTS PA 3500 NORTH ROCK ROAD BUILDING #800 WICHITA, KANSAS 67226		Date MAY 1990
636-5566		1 5

MKEC Proj. No. 90-31-113 B

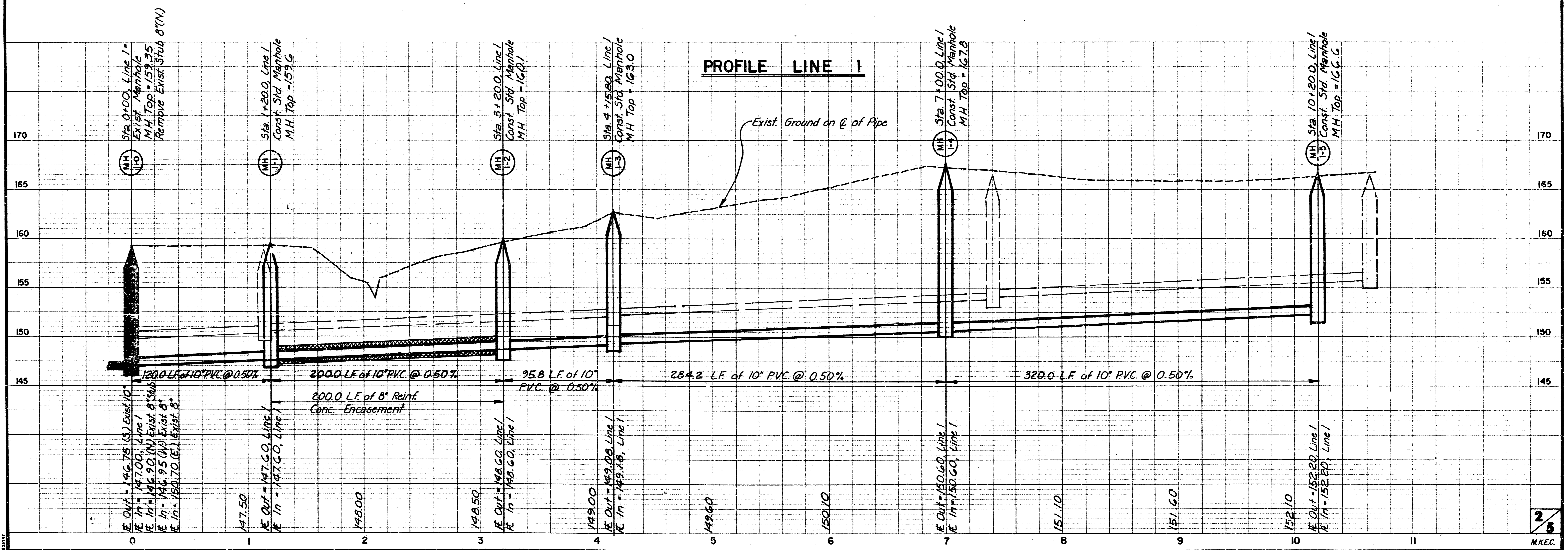
FILMED FROM THE BEST AVAILABLE COPY



UNPLATTED

Scale: 1" = 40' Horiz.
 1" = 5' Vert.

PLAN LINE 1

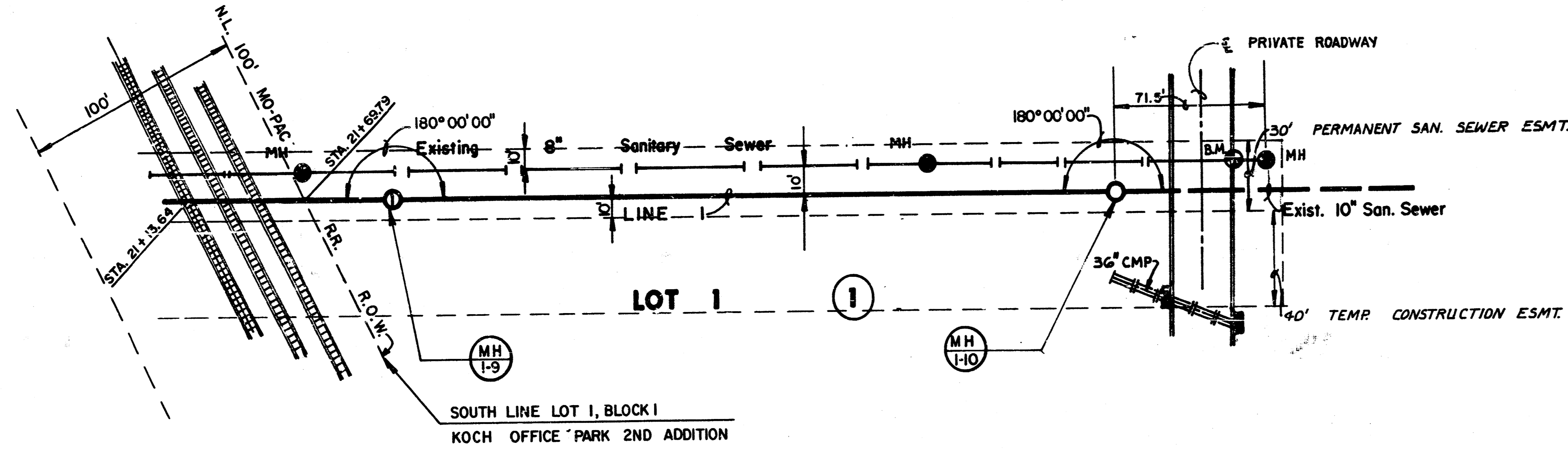


PROFILE LINE 1

FILMED FROM THE BEST AVAILABLE COPY

Scale: 1" = 40' Horiz.
 1" = 5' Vert.

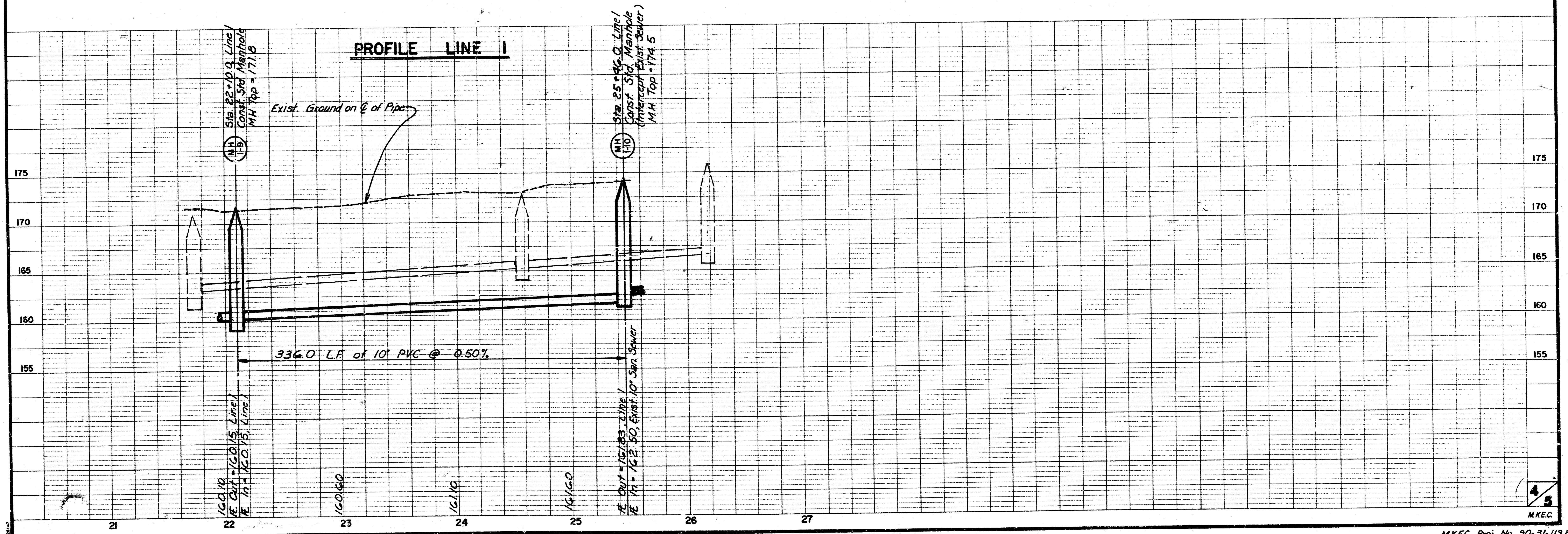
KOCH OFFICE PARK SECOND ADDITION



NOTE: Contractor to Excavate Existing Pipe @ 25+46 to Verify Elevation of the Direction of the Field Engineer.

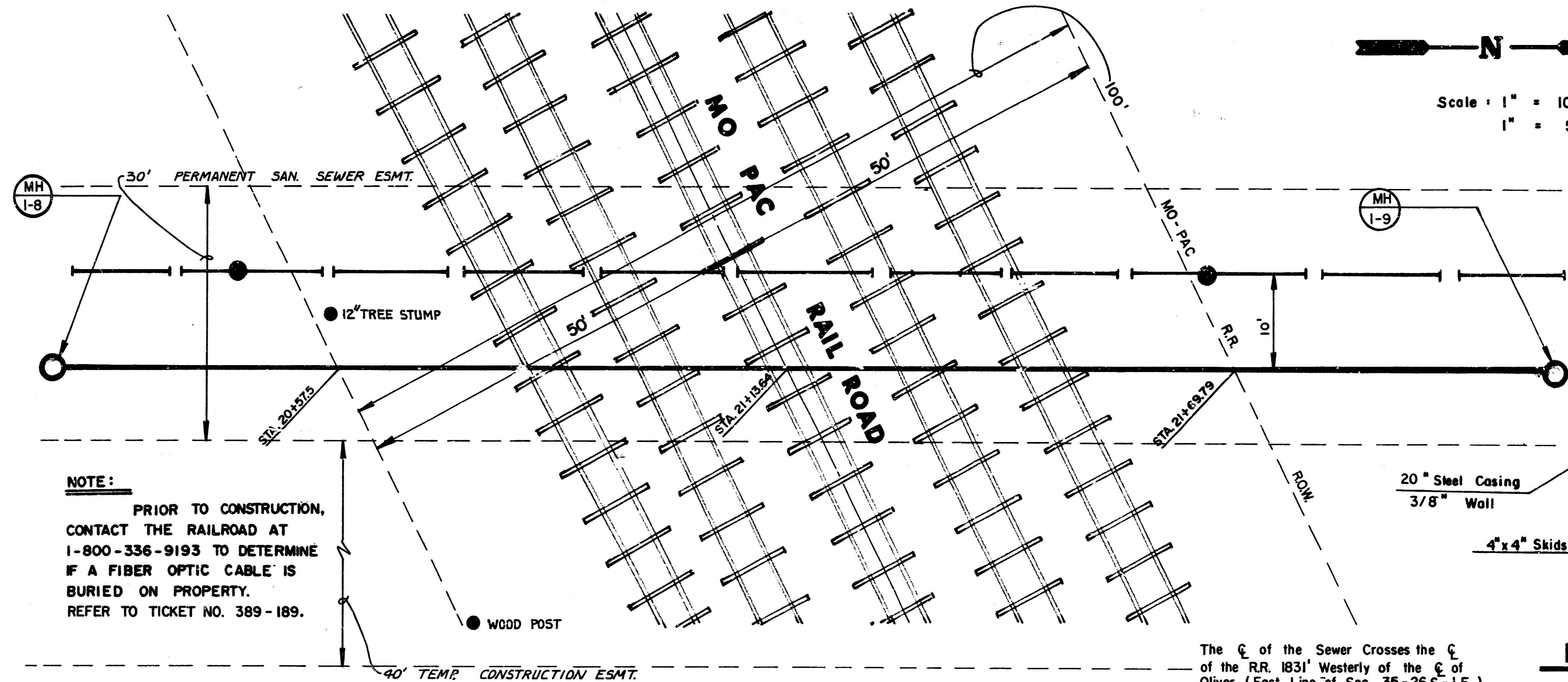
PLAN LINE 1

PROFILE LINE 1

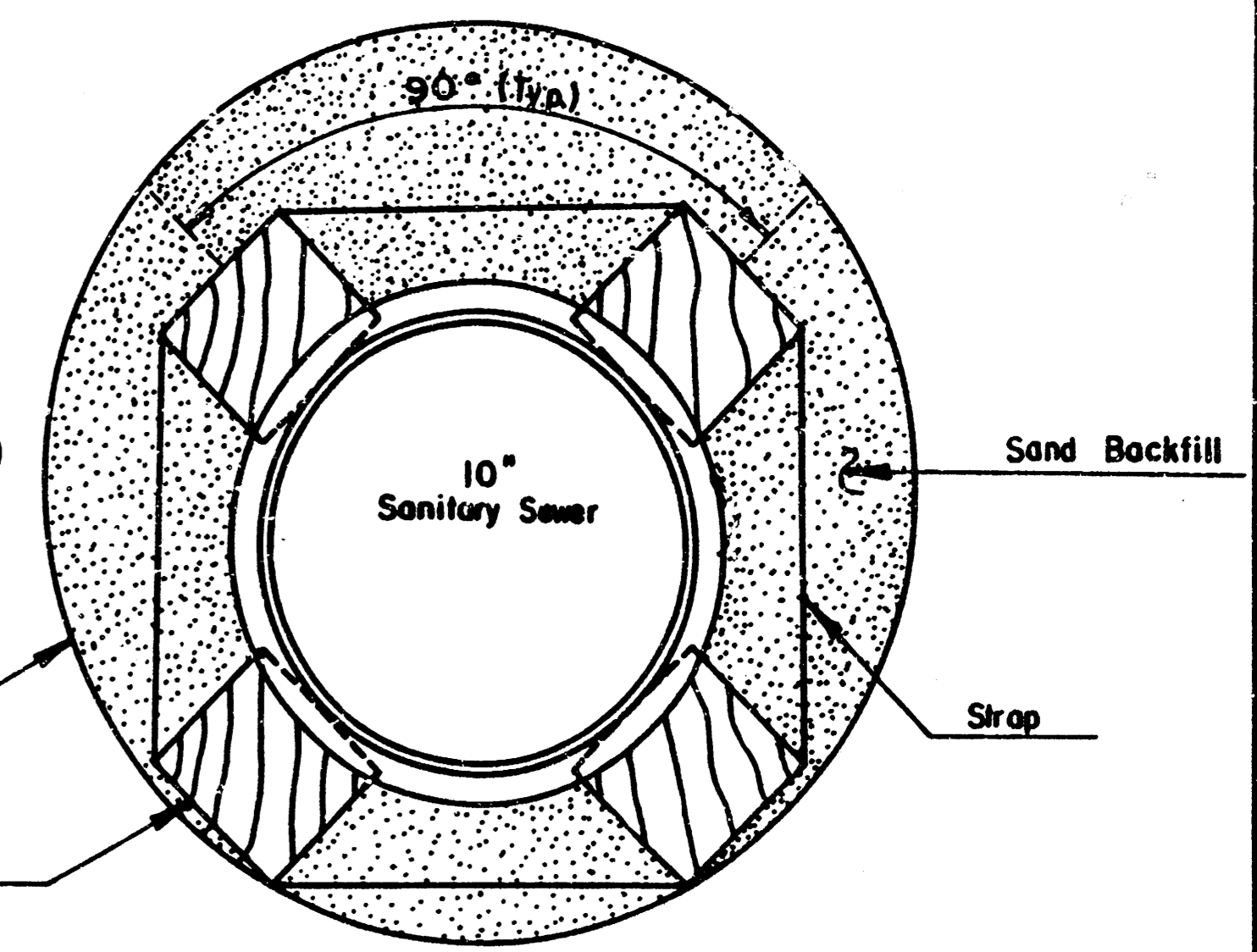


NOTE:
 AT LEAST 48 HOURS PRIOR TO ENTERING UPON THE RAILROAD RIGHT-OF-WAY NOTIFY :
 DALE KREIFELS
 MANAGER/TRACK MAINTENANCE
 2645 NEW YORK AVENUE
 P.O. BOX 2818
 WICHITA, KANSAS 67201
 PHONE (316)-268-9448

NOTE:
 CASING ENDS SHALL BE SEALED WITH 6" MORTAR SEAL. RAILROAD RIGHT-OF-WAY TO BE REGRADED, AND SEEDED TO ORIGINAL CONDITION WHERE DISTURBED. THIS WORK SUBSIDIARY TO BID OF CASING.



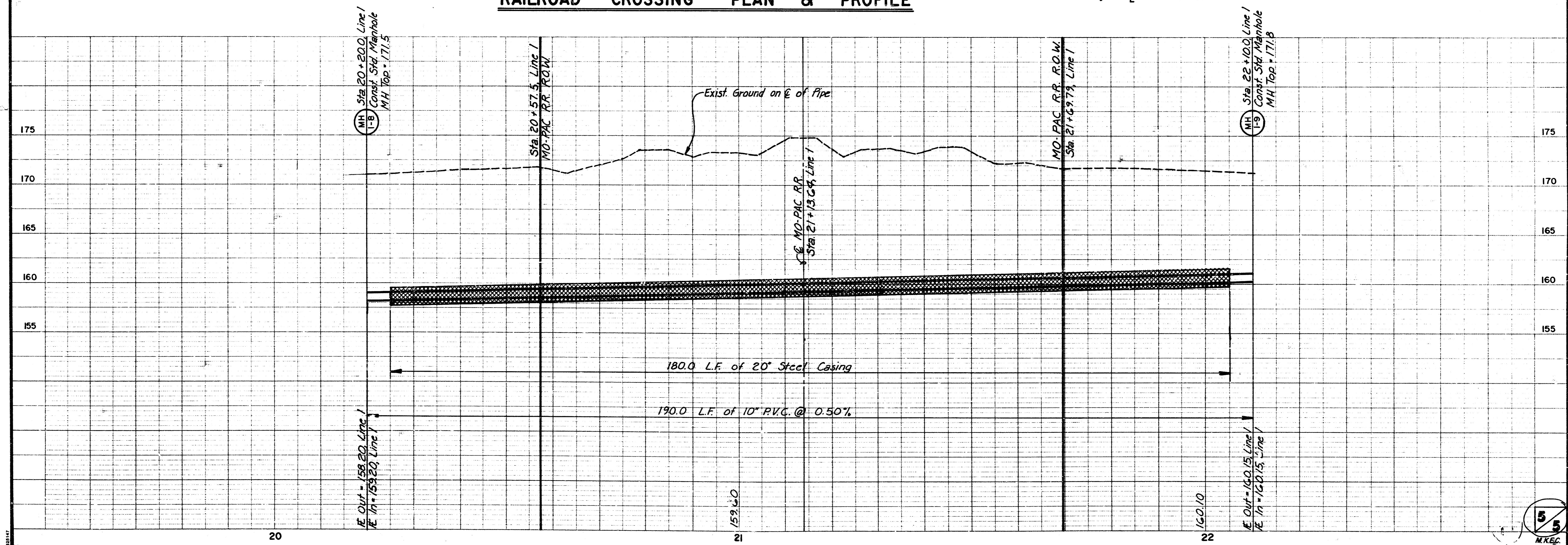
Scale : 1" = 10' Horiz.
 1" = 5' Vert.



NOTE:
 PRIOR TO CONSTRUCTION, CONTACT THE RAILROAD AT 1-800-336-9193 TO DETERMINE IF A FIBER OPTIC CABLE IS BURIED ON PROPERTY. REFER TO TICKET NO. 389-189.

The ζ of the Sewer Crosses the ζ of the RR. 183' Westerly of the ζ of Oliver (East Line of Sec. 35-26 S.-1 E.) Measured Along the ζ of the Railroad.

RAILROAD CROSSING PLAN & PROFILE



5/5
 MKEC

FILMED FROM THE BEST AVAILABLE COPY