

CONSTRUCTION PLANS FOR SANITARY SEWER SYSTEM EXTENSIONS

GENERAL NOTES

1. Existing utility lines and their location, as shown on the plans, represent the best information obtainable for design. The contractor will be required to work around existing utilities within the right-of-way which do not conflict with proposed construction.
2. Rubble from the removal of miscellaneous structures and excess excavation which is to be wasted shall be disposed of on sites to be provided by the Contractor. These sites shall be approved by the Engineer as to suitability, appearance and site location. Locations that, in the opinion of the Engineer, will leave an unsightly appearance will not be approved.

All disposal sites must be approved by the Kansas Department of Health and Environment. Material either stockpiled or disposed of in a flood plain would require a Kansas State Board of Agriculture permit. Any material dumped in waters of the United States or wetlands is subject to U.S. Corps. of Engineers permitting regulations. Any material buried or stockpiled beyond approved construction limits would require additional archaeological investigations unless buried in a previously approved borrow location.
3. The Contractor shall be responsible for maintaining continuous flow of sewage through construction. Contractor's proposed method for maintaining sewage flow shall be approved by the Engineer. Cost of maintaining flow of sewage through construction will not be paid for directly and this cost shall be considered as subsidiary to the other pay items of the work.
4. The Contractor shall be responsible for preserving property irons. The Contractor will be required to re-establish any property irons which are damaged or destroyed by his construction operations. Such irons shall be re-established by a licensed land surveyor or a licensed professional engineer in accordance with state laws.
5. Trees and shrubs in public right-of-way which are in direct conflict with proposed new construction shall be removed by the Contractor with the Engineer's approval and shall be subsidiary to the Project costs. Trees and shrubs which are not in direct conflict with the proposed new construction shall be saved and protected from damage.
6. Contractor shall vacuum test all manholes according to the City of Wichita standard specifications.
7. The contractor shall not start work on the project until the project inspector is assigned to the project and is present on the site. Any work done without inspection will be required to be uncovered for inspection.

THE MOORINGS 5TH ADDITION

TO

CITY OF WICHITA, KANSAS

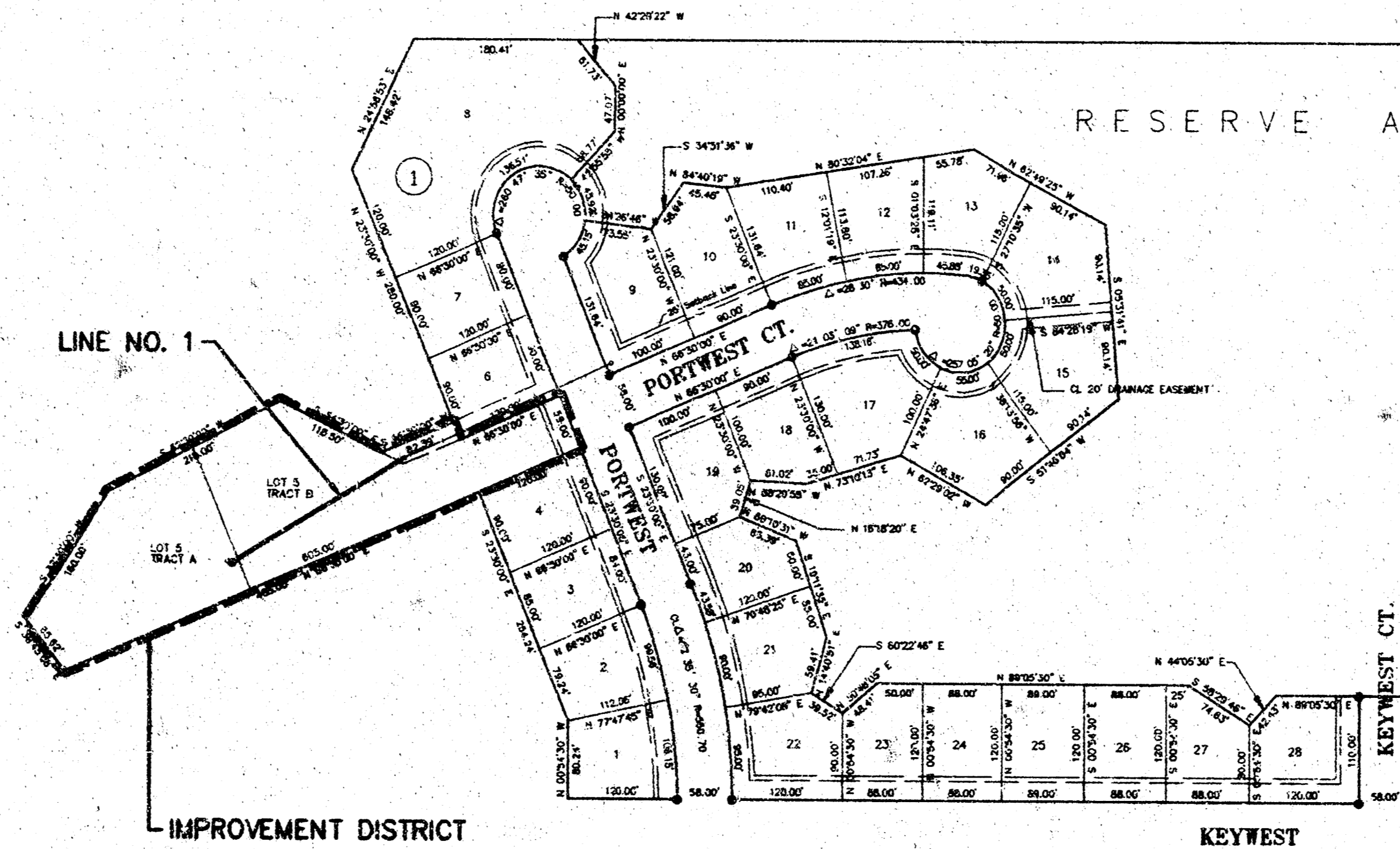
LATERAL 82, SANITARY SEWER NO. 23

PROJECT NO. 488-82358

INDEX CODE 742378

INDEX

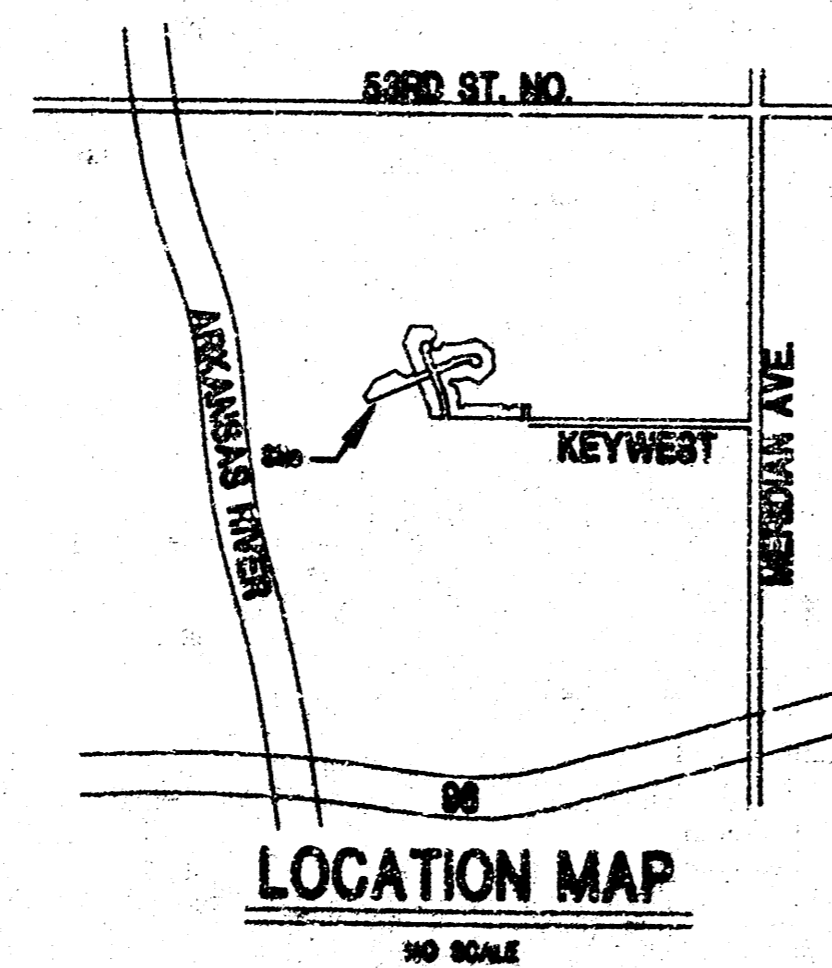
TITLE SHEET	SHEET 1
PLAN - PROFILE SHEET	SHEET 2
THE MOORINGS 5TH ADD. FINAL PLAT	SHEET 3



BENCH MARKS

(City of Wichita Datum)

1. Top 5/8" Bar at the S.W. Cor. Lot 6, Block 1, The Moorings 5th Addition. Elev. 142.94



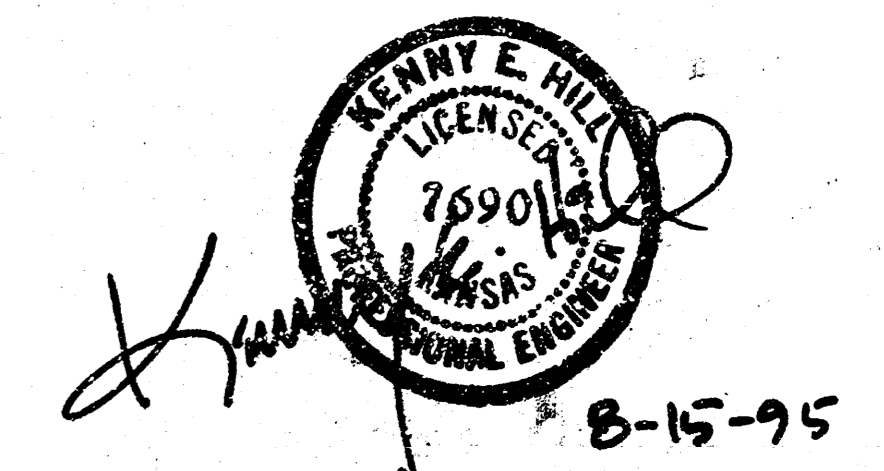
AUGUST 1985

PLANS PREPARED

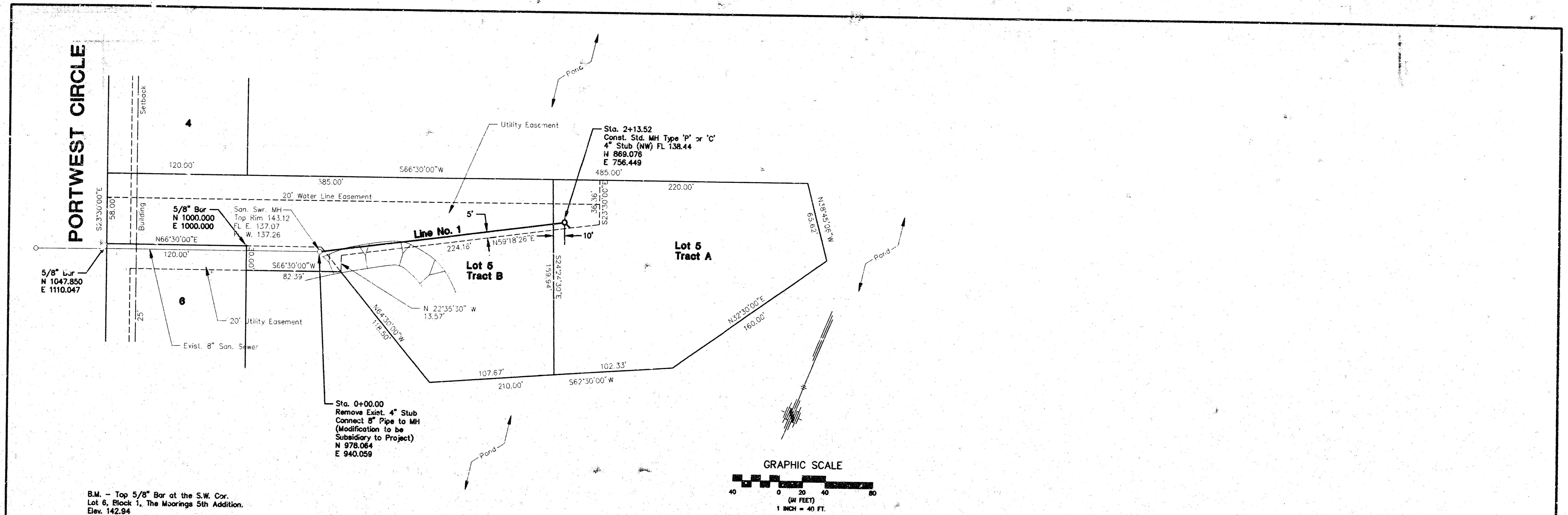
BY

POE & ASSOCIATES OF KANSAS, INC.
CONSULTING ENGINEERS
424 N. Oliver - Suite 110 - Wichita, KS 67208 - 315/885-1114

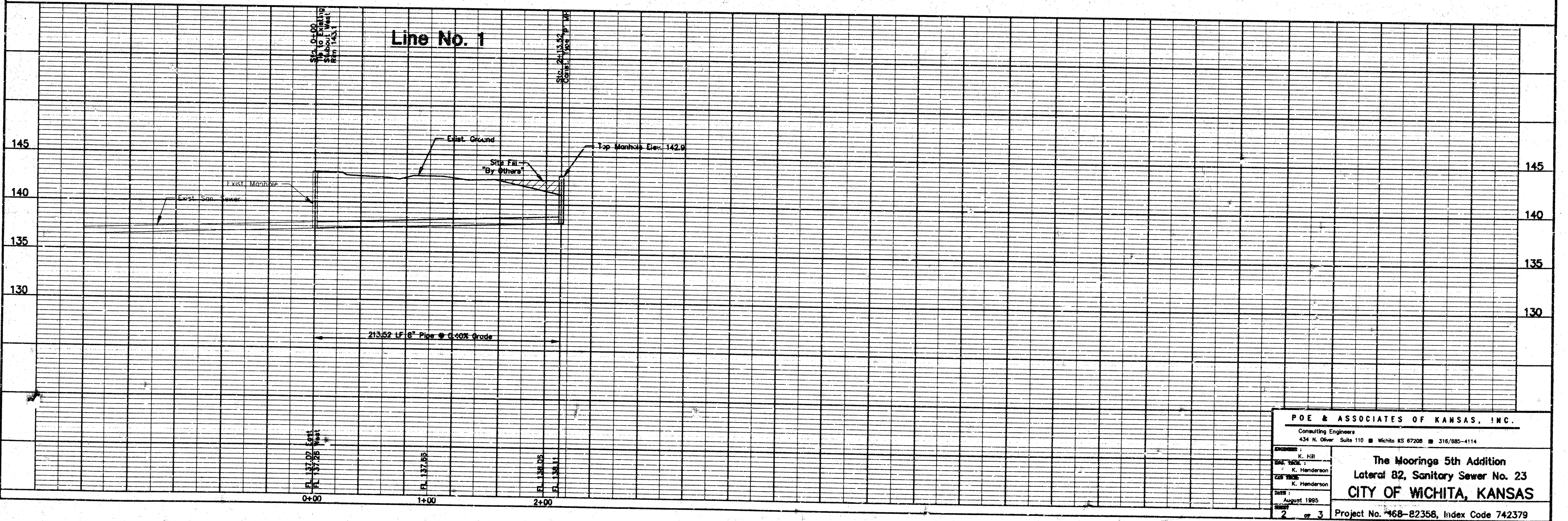
*Booked 1-8-96
By JKB
Plan*



PORTWEST CIRCLE

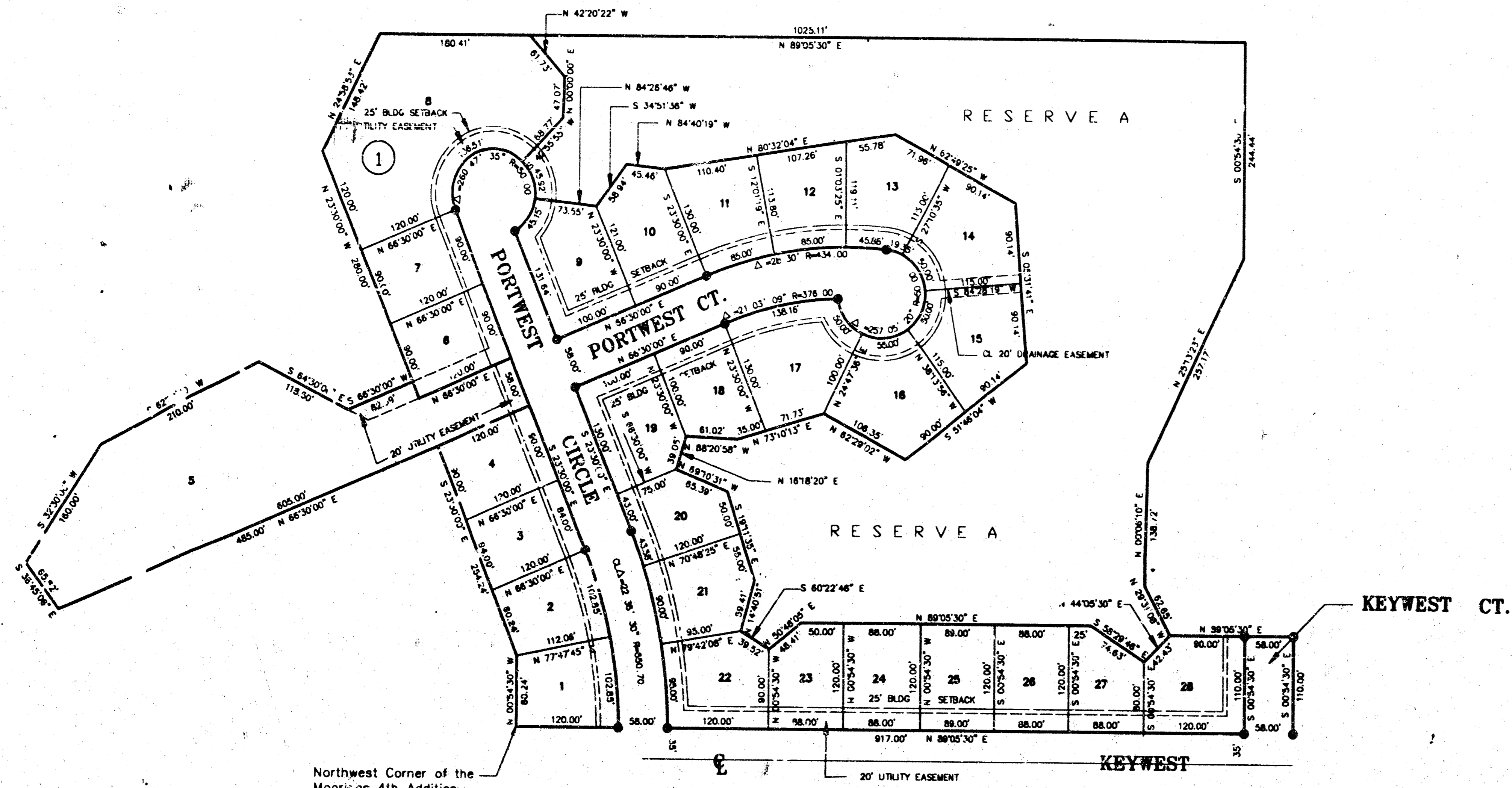


B.M. - Top 5/8" Bar at the S.W. Cor.
Lot 6, Block 1, The Moorings 5th Addition.
Elev. 142.94



PDE & ASSOCIATES OF KANSAS, INC. Consulting Engineers 434 N. Oliver, Suite 110 • Wichita, KS 67208 • 316/885-4114	
ENGINEER: K. NRI	The Moorings 5th Addition Lateral 82, Sanitary Sewer No. 23 CITY OF WICHITA, KANSAS
DATE: August 1995	PROJECT NO.: 468-B2358, Index Code 742379
SHEET: 2 of 3	

PCI-4



THE MOORINGS 5th ADDITION

To Wichita Sedgwick County, Kansas

REVISED 9-20-90 DIMENSIONS OF LOT 2 AND 3

STATE OF KANSAS
COUNTY OF SEDGWICK

I, Kenny E. Hill, being a duly licensed Land Surveyor in said County and State, do hereby certify that I have been in responsible charge of surveying and plotting THE MOORINGS 5TH ADDITION to Wichita, Kansas, being described as follows:

Commencing at the Northeast Corner of the Southeast Quarter (SE1/4) of Section 24, Township 26 South, Range 1, West of the 6th P.M., Sedgwick County, Kansas; thence S 0° 00' 30" E on the East line of the Southeast Quarter (SE1/4) of said Section 24 for a distance of 614.11 feet to the Northeast Corner of the Moorings Addition; thence S 89° 05' 30" W on the North line of Keywest for a distance of 2905.68 feet more or less to the Northwest Corner of The Moorings 4th Addition being the point of beginning; thence N 0° 54' 30" W for a distance of 80.24 feet; thence N 23° 30' 00" W for a distance of 254.24 feet; thence S 86° 30' 00" W for a distance of 485.00 feet; thence N 30° 45' 00" W for a distance of 65.62 feet; thence N 32° 30' 00" E for a distance of 160.00 feet; thence N 62° 30' 00" E for a distance of 210.00 feet; thence S 84° 30' 00" E for a distance of 118.50 feet; thence N 66° 30' 00" E for a distance of 82.38 feet; thence N 23° 30' 00" W for a distance of 280.00 feet; thence N 24° 58' 53" E for a distance of 148.42 feet; thence N 89° 05' 30" E for a distance of 1025.11 feet; thence S 0° 54' 30" E for a distance of 244.44 feet; thence S 25° 13' 21" W for a distance of 257.17 feet; thence S 0° 08' 10" W for a distance of 138.72 feet; thence S 29° 31' 08" E for a distance of 62.65 feet; thence N 89° 05' 30" E for a distance of 148.00 feet; thence S 0° 54' 30" E for a distance of 110.00 feet; to a point on the North line of Keywest; thence S 89° 05' 30" W for a distance of 917.00 feet to the point of beginning, containing 18.23 acres more or less.

The accompanying plat is a true and correct exhibit of property surveyed.
Dated this 6th day of JULY, 1990.

Kenny E. Hill
Kenny E. Hill, L.S.

KNOW ALL MEN BY THESE PRESENTS:

That we, MIBAC, INC., have caused the land described in the Surveyor's Certificate to be platted into lots, blocks, streets, and a reserve. The streets are hereby dedicated to and for the use of the public. Easements are hereby granted as indicated for the construction and maintenance of drainage and utilities. Reserve "A" is reserved for open space and a lake to be owned and maintained by a lot (or home) owners' association. Lots adjacent to the lake shall have a continuous minimum high point ground elevation of 143.0 City Datum.

MIBAC, INC.

C. Bill Bachman, President

STATE OF KANSAS
COUNTY OF SEDGWICK

This instrument was acknowledged before me on this 6th day of July, 1990, by C. BILL BACHMAN.

Carol R. Barnes
Notary Public
Carol R. Barnes

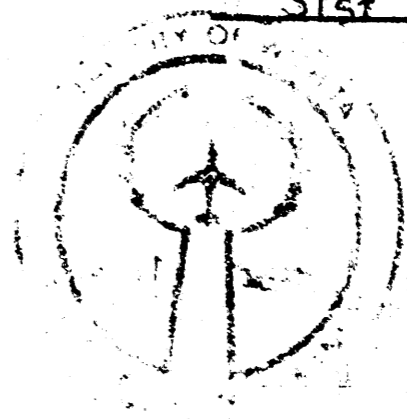
My Appointment Expires: 7-25-92

This Plat of THE MOORINGS 5TH ADDITION to Wichita to Sedgwick County, Kansas has been submitted to and approved by this WICHITA-SEDGWICK COUNTY METROPOLITAN AREA PLANNING COMMISSION, Wichita, Kansas.

Dated this 5th day of July, 1990.

WICHITA SEDGWICK COUNTY METROPOLITAN AREA PLANNING COMMISSION
George W. Sherman Acting Chairman
Mervin S. Kraut Secretary
(SEAL)

This Plat approved and all dedications shown herein accepted by the City Council of the City of Wichita, Kansas, this 31st day of July, 1990.

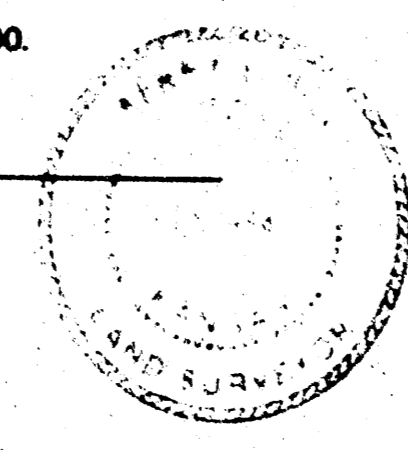


Bob Knight Mayor
Bob Knight

Pat Burnett Deputy City Clerk
Pat Burnett

Entered on transfer record this 4th day of August, 1990.

Don Wright County Clerk
Don Wright



This is to certify that this instrument was filed for record in the Register of Deeds Office at 3:25 A.M.-P.M. on the 6th day of July, 1990.

Pat Kettler Register of Deeds

Ed Reed Chief Deputy

THE MOORINGS 5th ADD.
LATERAL 82, SAN. SW. NO. 23
PROJECT NO. 468-82358
INDEX CODE 742379

PCI-4

