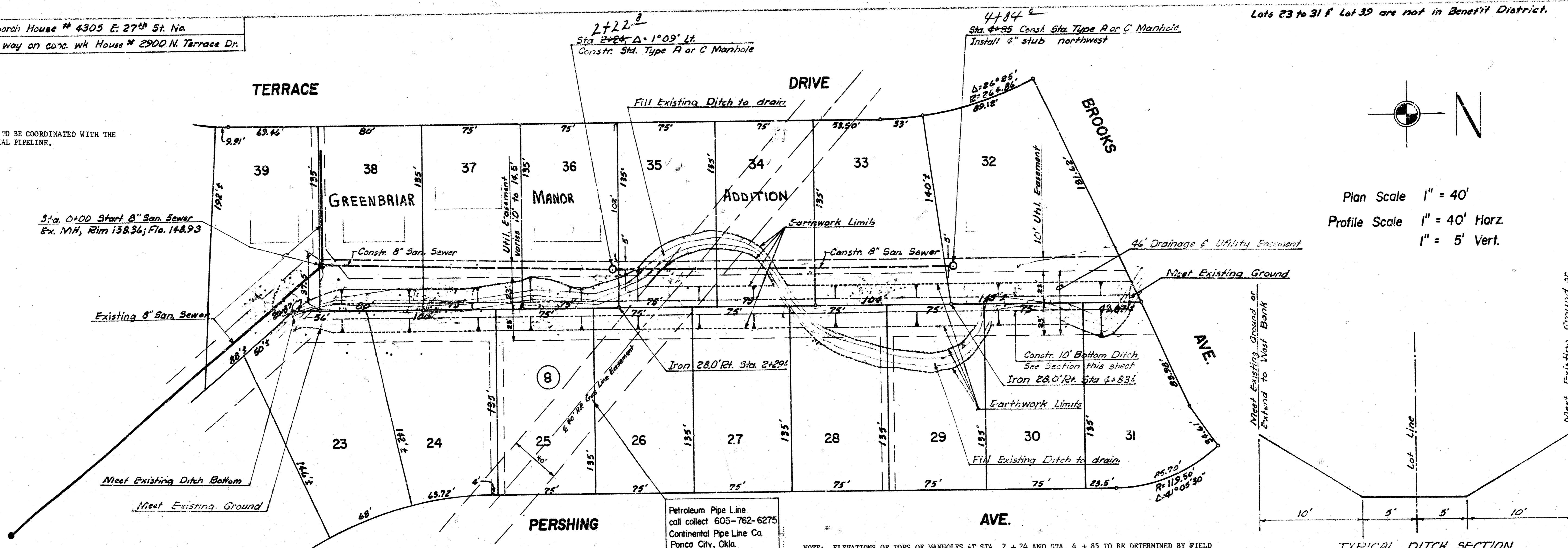
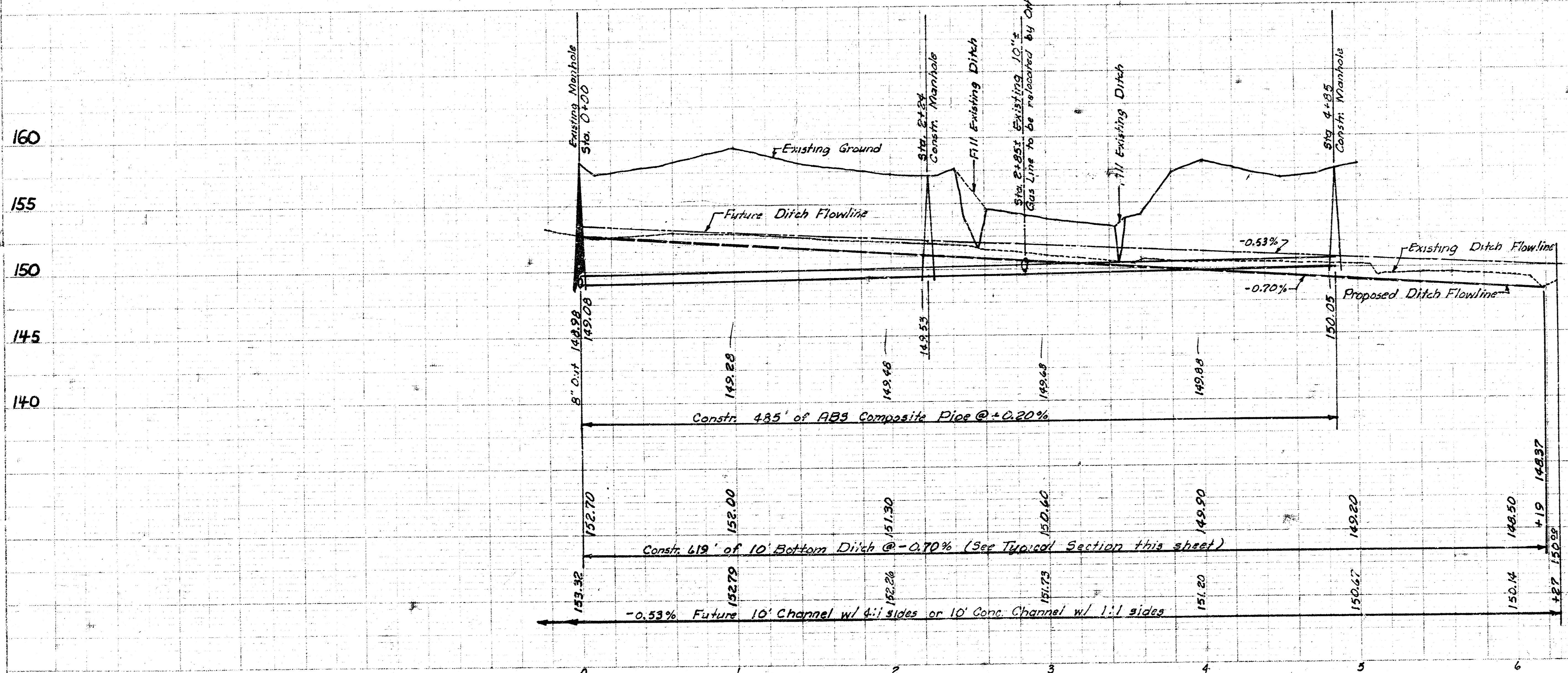


BM 161.56 NE Cor. Conc. porch House # 6305 E. 27th St. No.
 BM 140.23 Ctr. Brick fire way on conc. wk House # 2900 N. Terrace Dr.

NOTE: THIS PROJECT IS TO BE COORDINATED WITH THE ADJUSTMENT OF CONTINENTAL PIPELINE.

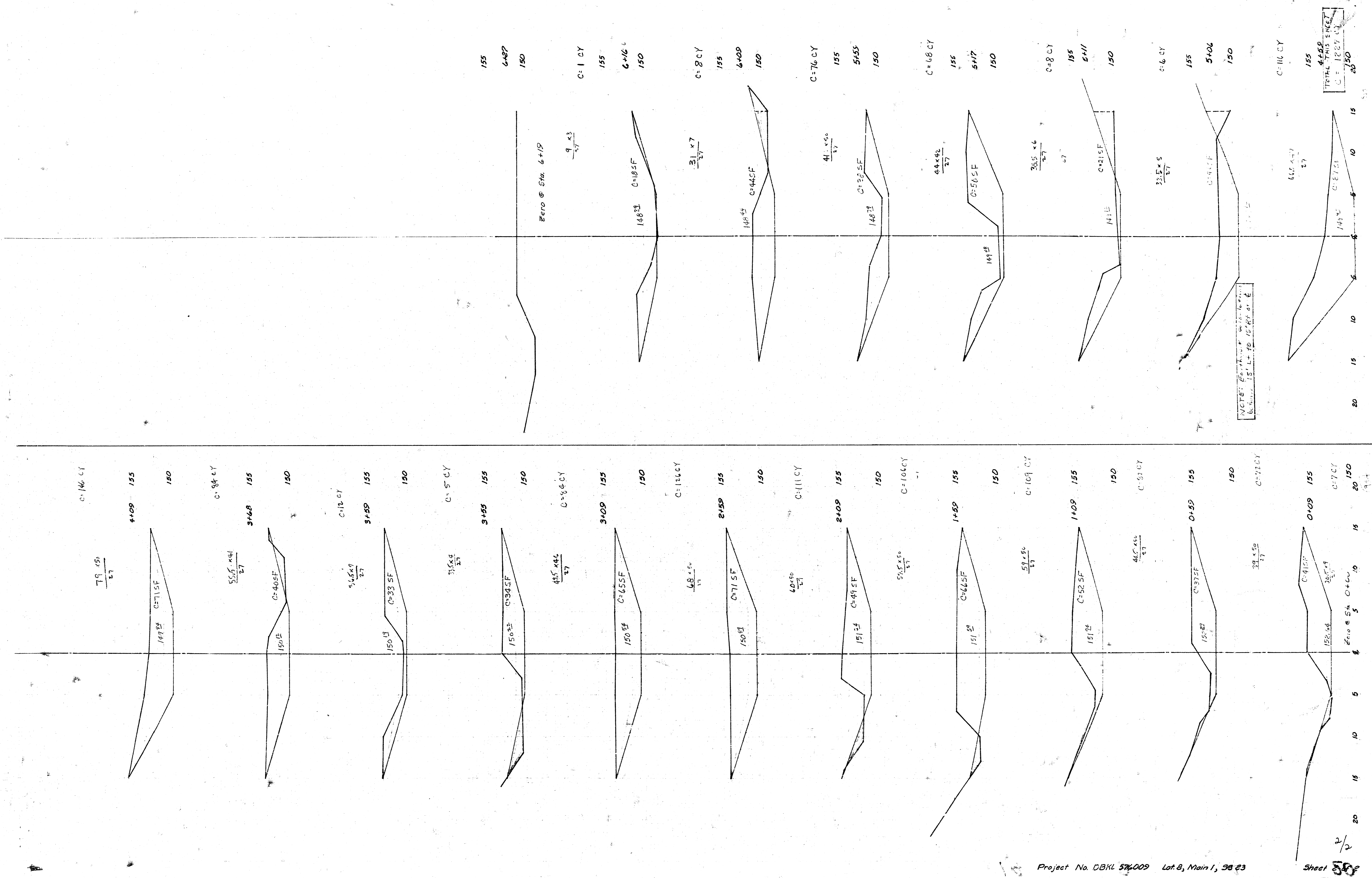


NOTE: ELEVATIONS OF TOPS OF MANHOLES AT STA. 2 + 24 AND STA. 4 + 85 TO BE DETERMINED BY FIELD ENGINEER. CONTRACTOR WILL BE REQUIRED TO EXCAVATE A CHANNEL AS SHOWN BY PLANS AND TO FILL THE EXISTING CHANNEL OUTSIDE THE LIMITS OF THE PROPOSED NEW CHANNEL AS SHOWN BY PLANS. EXCAVATION OF CHANNEL SHALL BE PAID FOR AT PRICE BID PER CUBIC YARD OF EXCAVATION. FILL WILL NOT BE PAID FOR DIRECTLY AND THIS COST SHALL BE INCLUDED IN THE UNIT PRICE BID FOR THE EXCAVATION OF THE CHANNEL.



As Built 10-5-76
LAT. 8 MAIN I SANITARY SEWER 23
 CITY OF WICHITA, KANSAS
 R. W. LINN — CITY ENGINEER
 DATE: _____
 Project Number DBKL576009





NOTES: 1. All work to be done in accordance with the specifications for the project. 2. The elevations shown are in feet above sea level. 3. The cut and fill volumes are in cubic yards.

TOTAL THIS SHEET
C.F. 1227.03