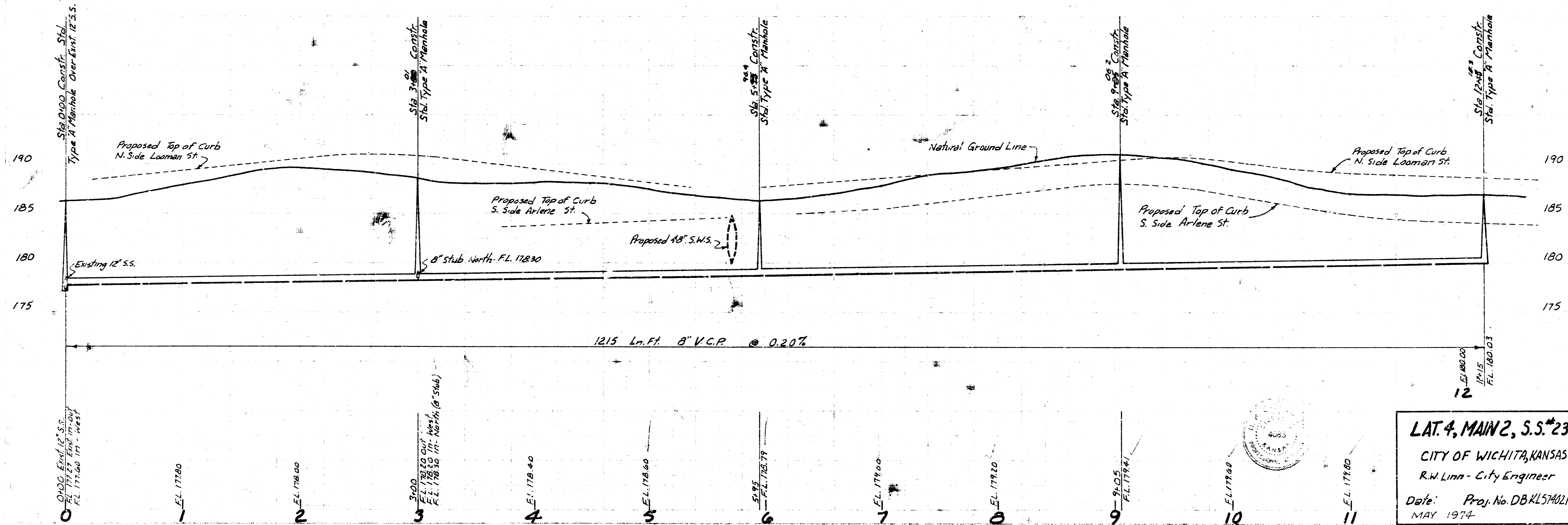
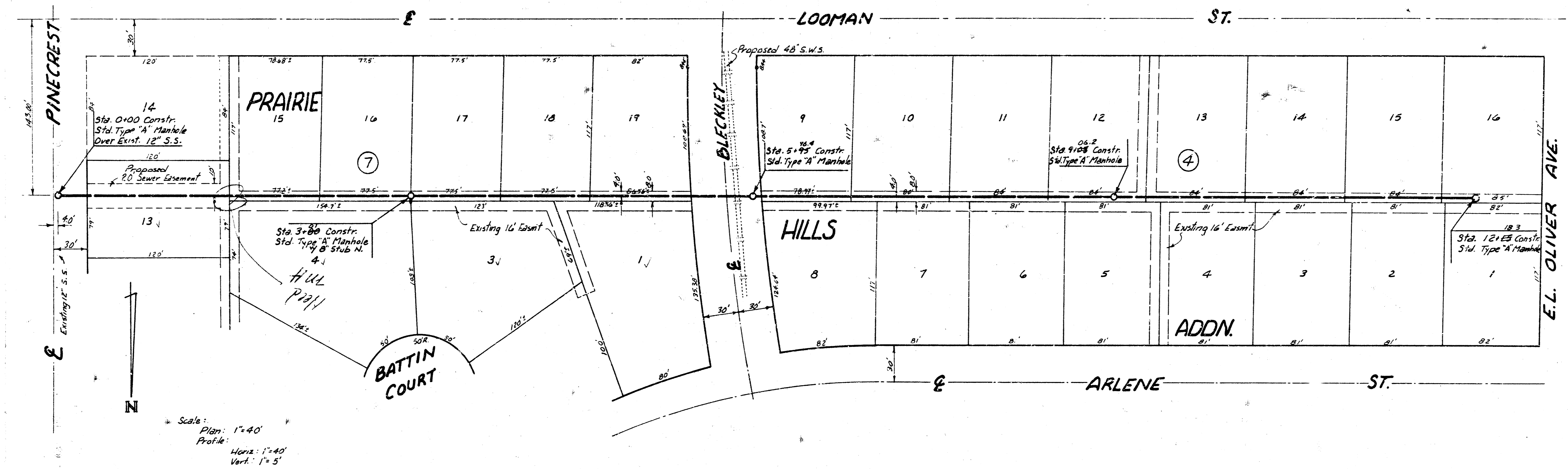


BM 17449 - City S&L 44' W of E Oliver Ave. & 32' N. of E.C. Point W. on 25th St. N.
 BM 18377 - 12" cut Top Curb W.S. Oliver, 13' curb J.N. of S.L. Arlene ext.
 BM 18631 - S.W. Corner Conc. Pave. Ho. at 49th E. 24th St. N.



LAT. 4, MAIN 2, S.S.*23
 CITY OF WICHITA, KANSAS
 R.W. Linn - City Engineer
 Date: Proj. No. DBKL574021
 MAY 1974

AS BUILT MEASUREMENTS
 Book No. 1A-DE
 14 9 4