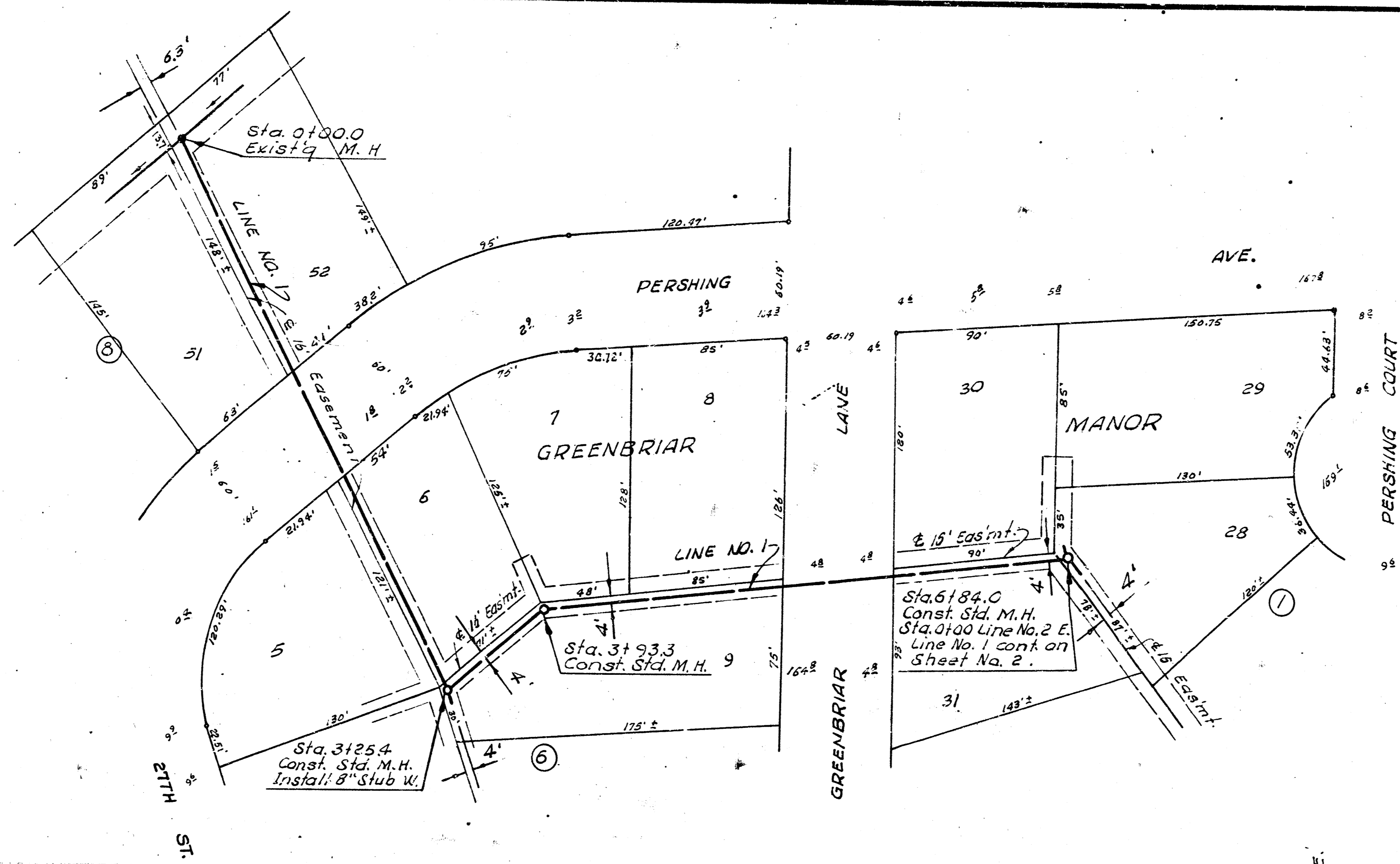
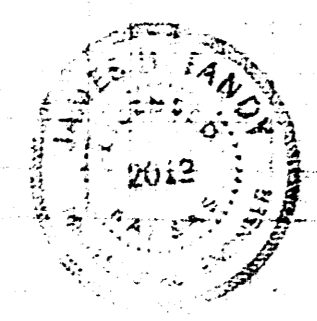
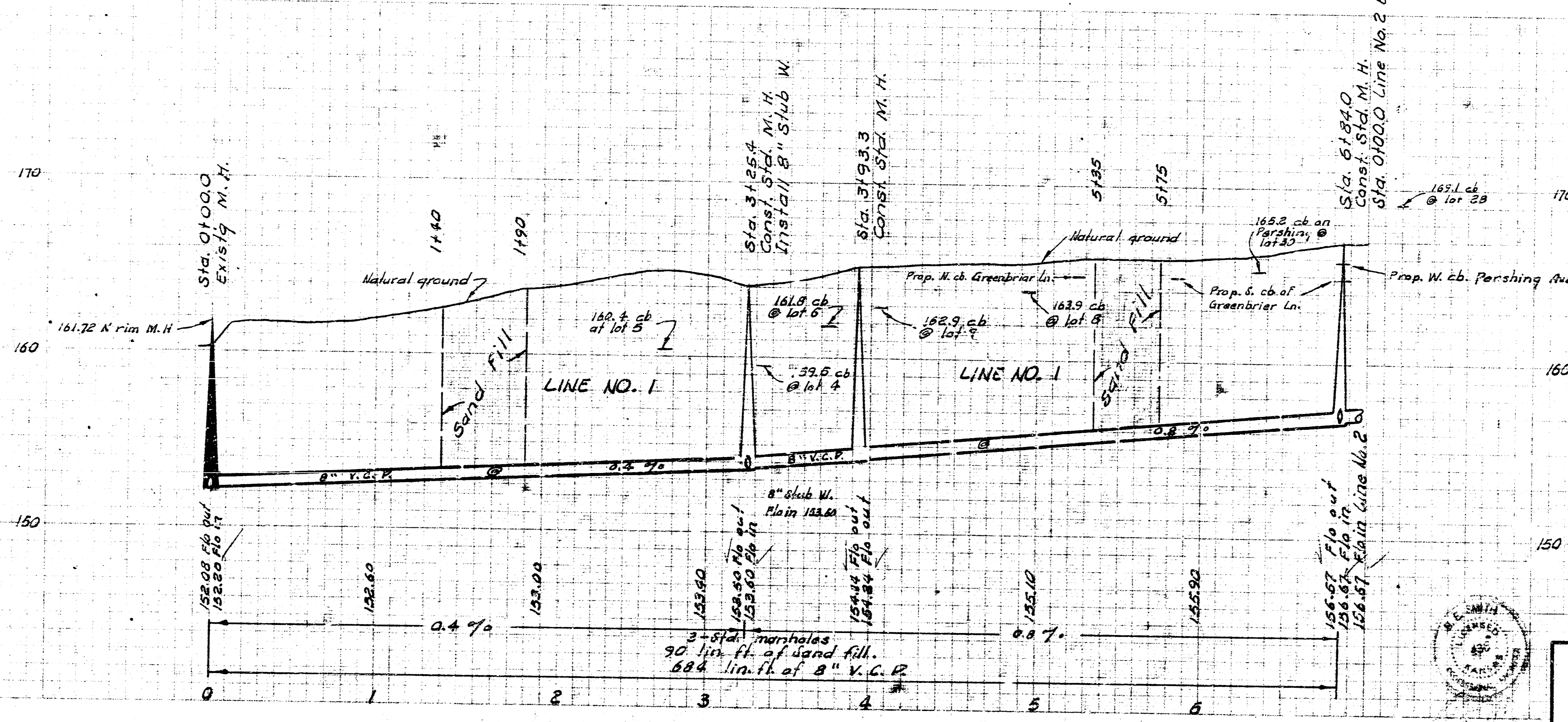


B. M. 161.72 N. Rim M. H. 13.7' west and
5.3' So. of S. E. cor of S1, Bk B.

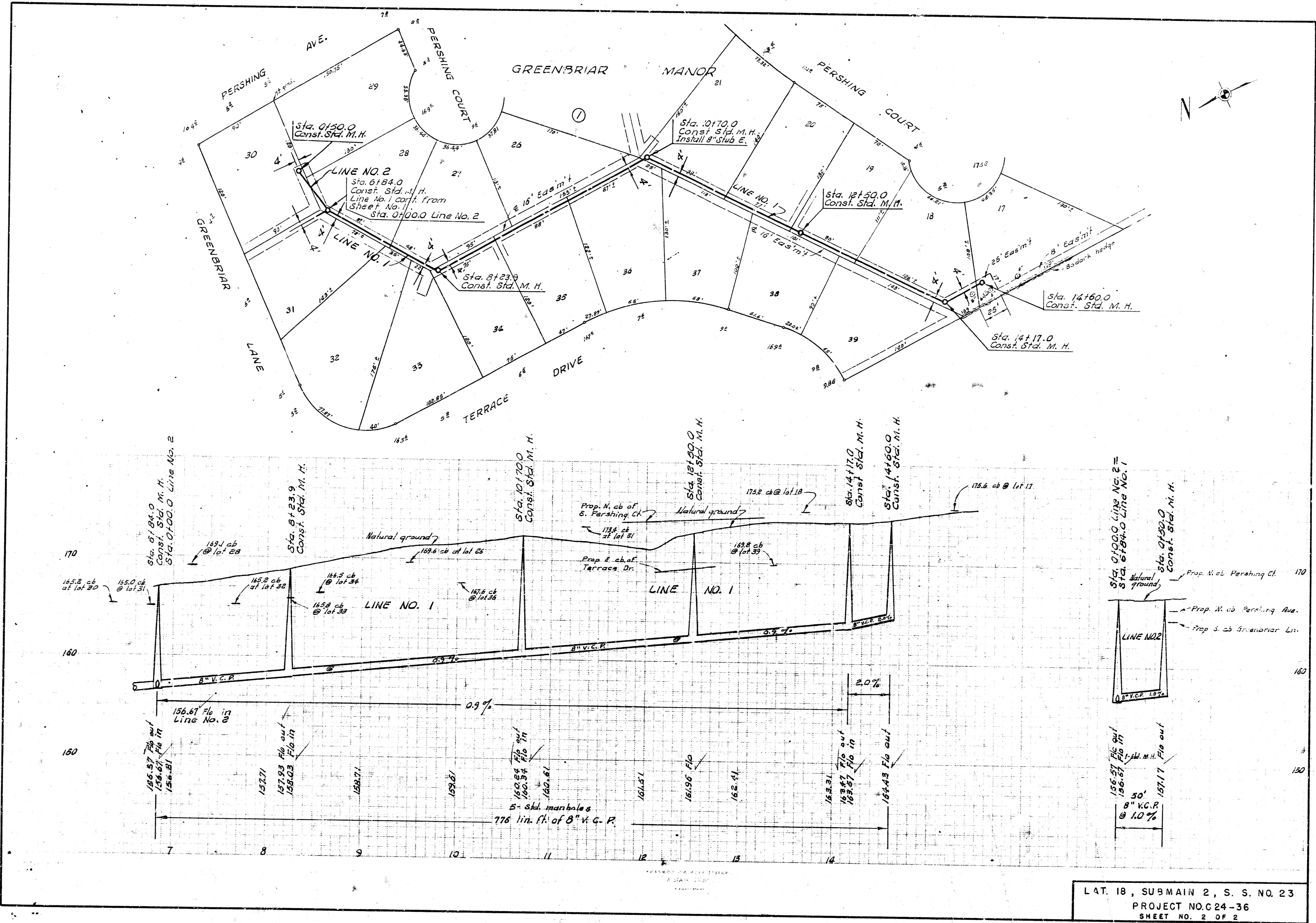


Plan Scale 1" = 40'
Profile Scale 1" = 4' vert.

Station by J. W. Smith, No. 2277
 Checked by [Signature]



LAT. 18, SUBMAIN 2, S. S. NO. 23
 CITY OF WICHITA, KANSAS
 B. E. SMITH CITY ENGINEER
 OCT. 1965 PROJECT NO. C24-36
 SHEET NO. 1 OF 2



LAT. 18, SUBMAIN 2, S. S. NO. 23
 PROJECT NO. C24-36
 SHEET NO. 2 OF 2