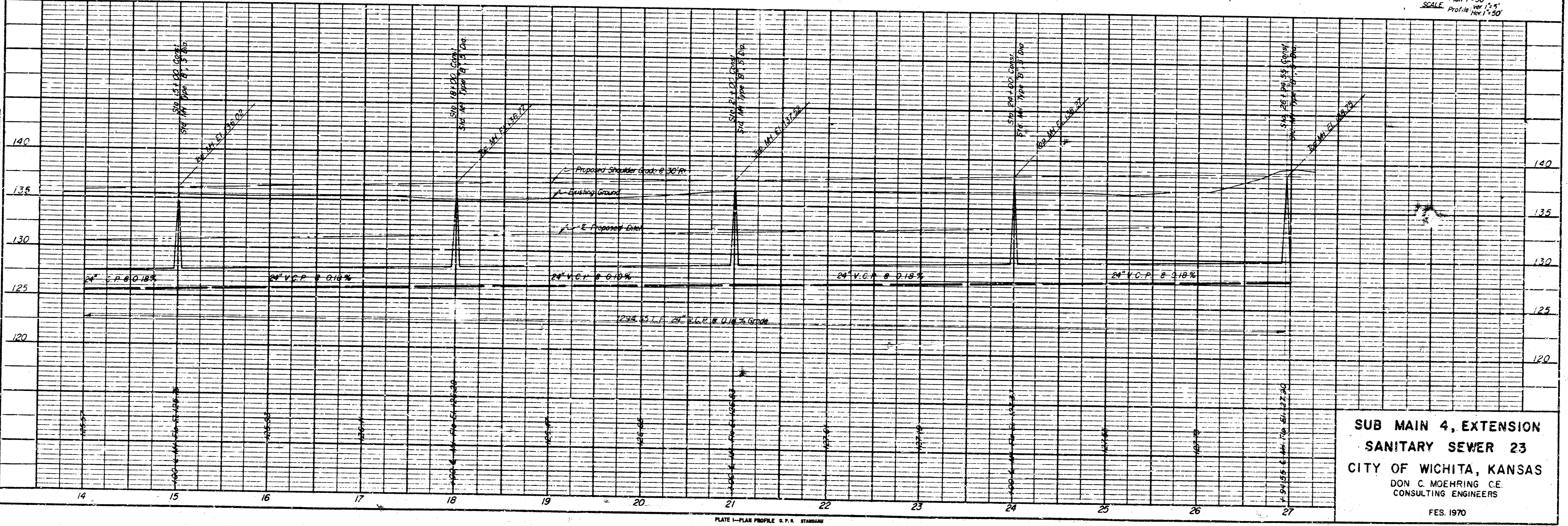
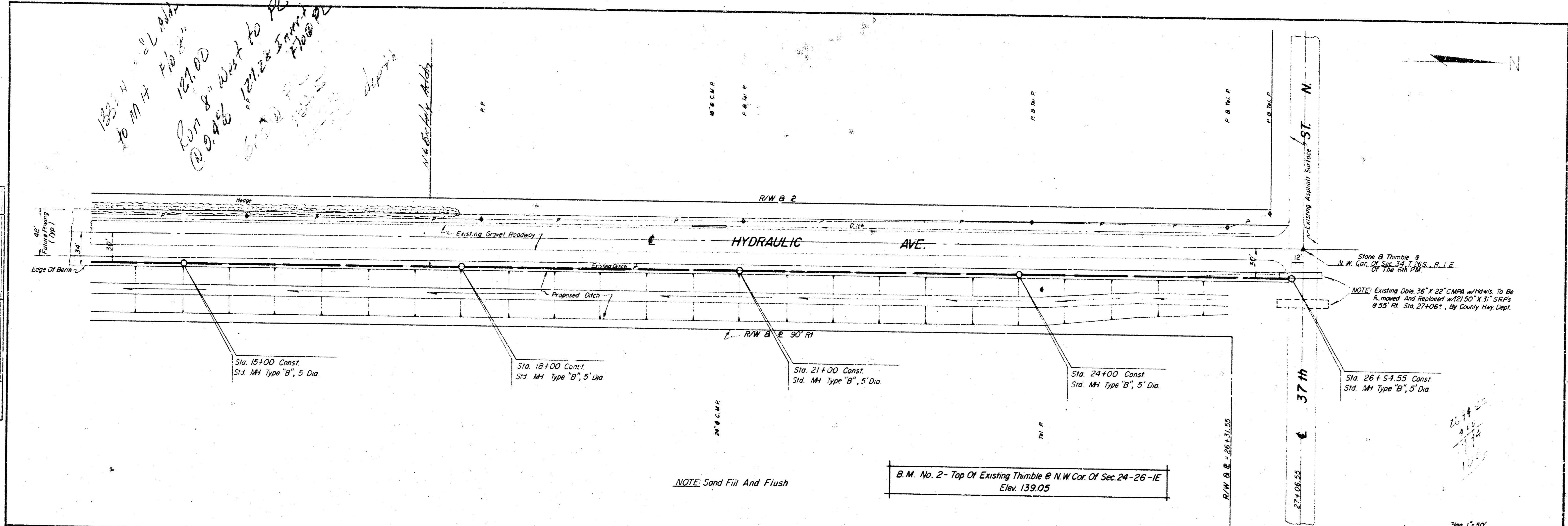
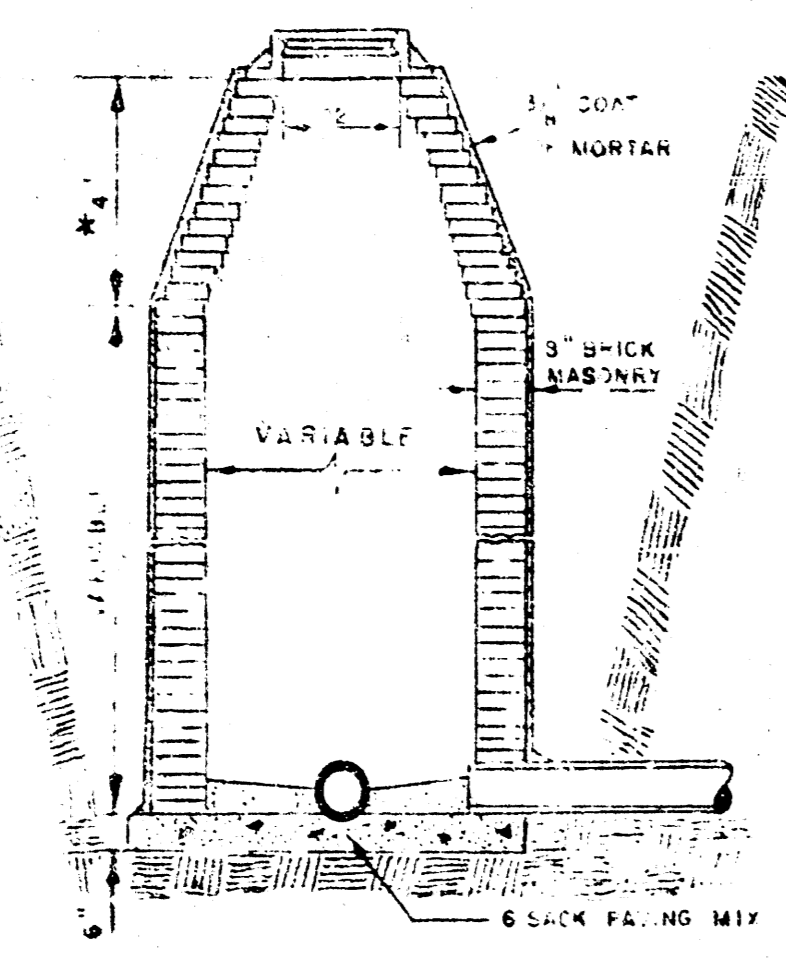


PLAN	DATE	BY
REVISED		
APPROVED		
NOTE BOOK		
NO.		

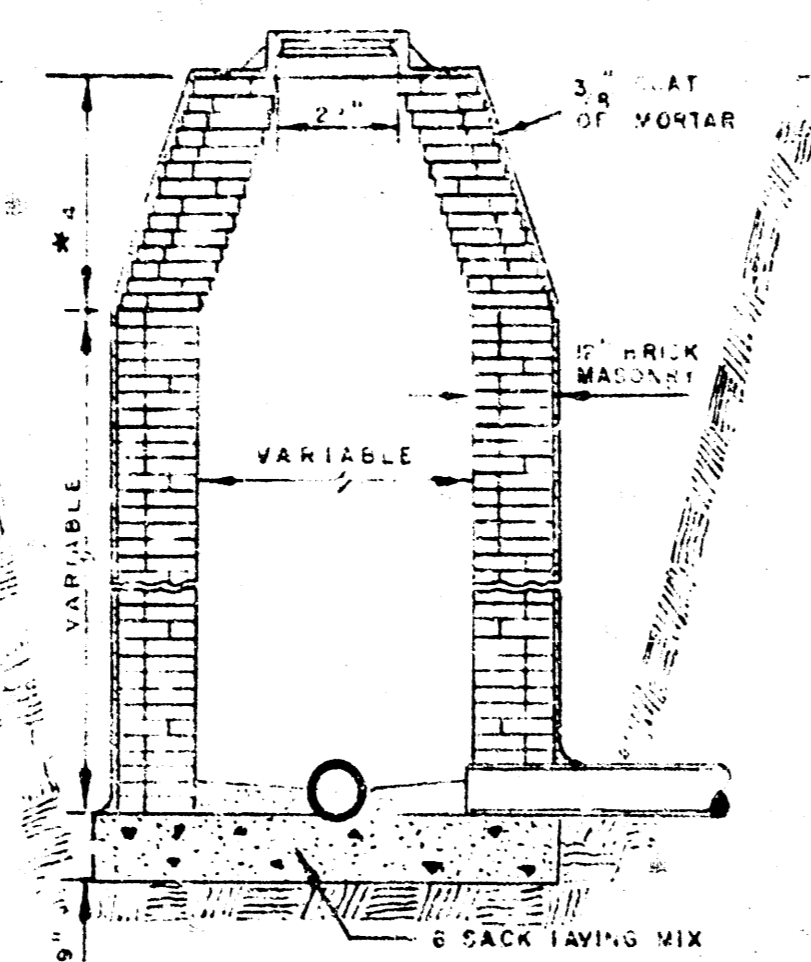
PROFILE	DATE	BY
REVISED		
APPROVED		
NOTE BOOK		
NO.		



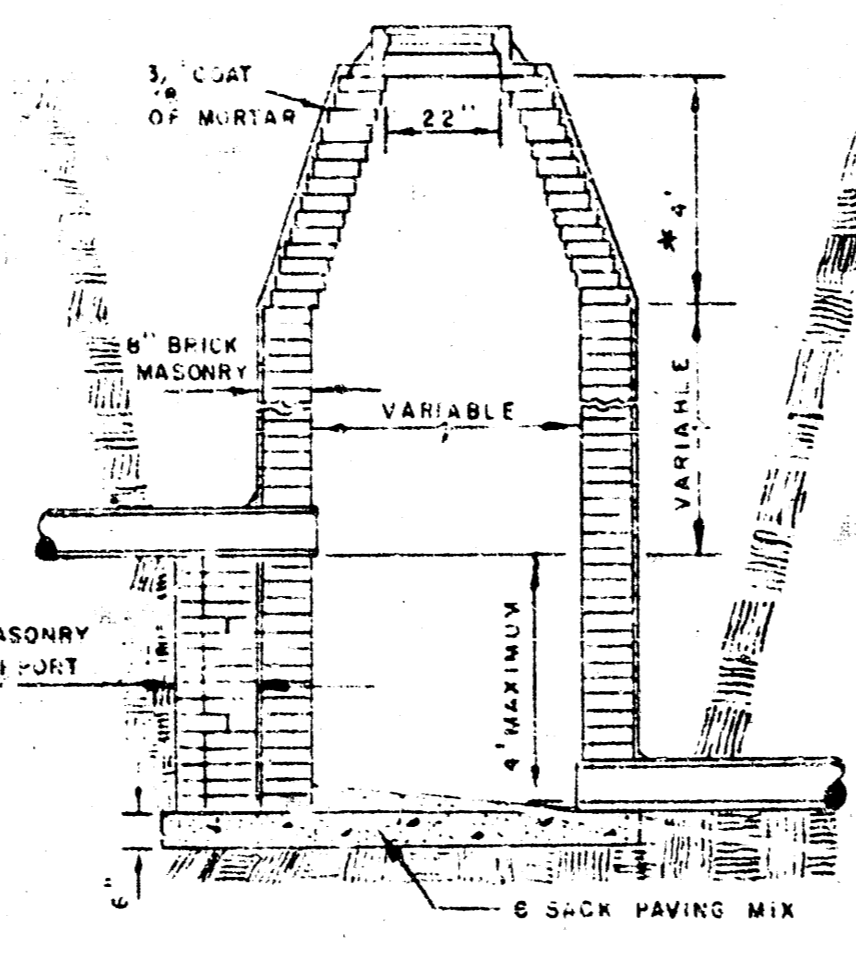
SUB MAIN 4, EXTENSION
 SANITARY SEWER 23
 CITY OF WICHITA, KANSAS
 DON C. MOHRING, C.E.
 CONSULTING ENGINEERS
 FEB. 1970



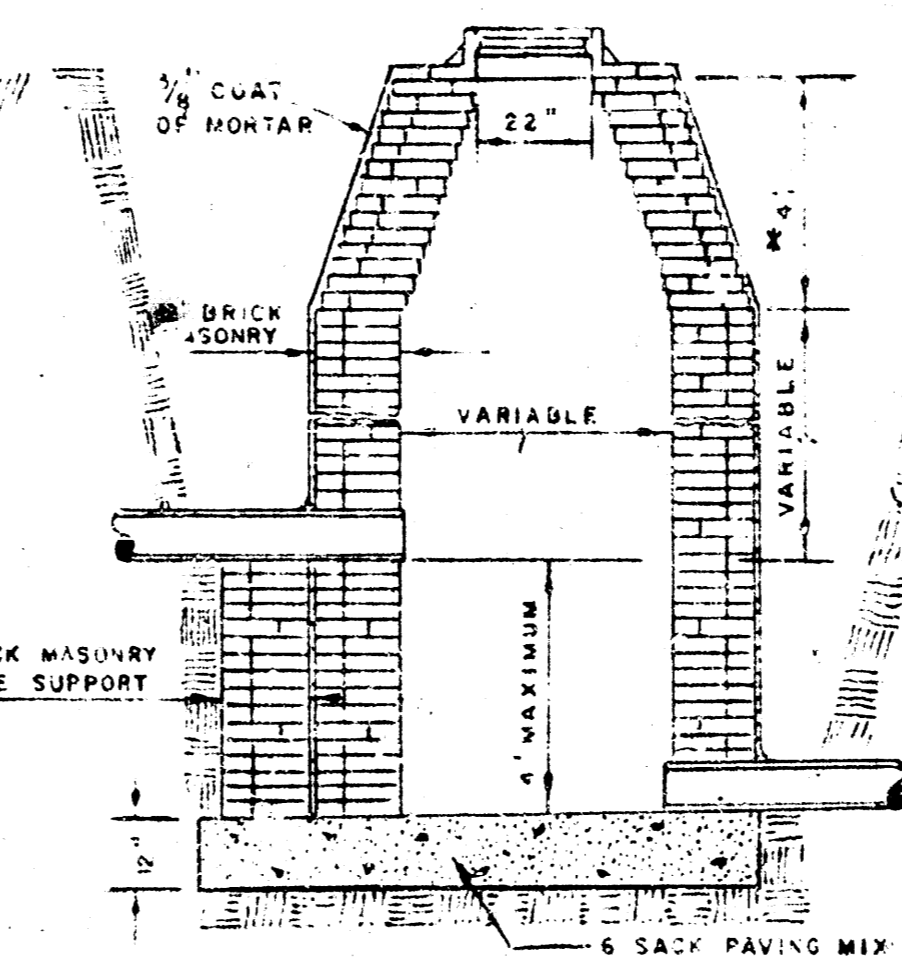
STANDARD MANHOLE TYPE "A"



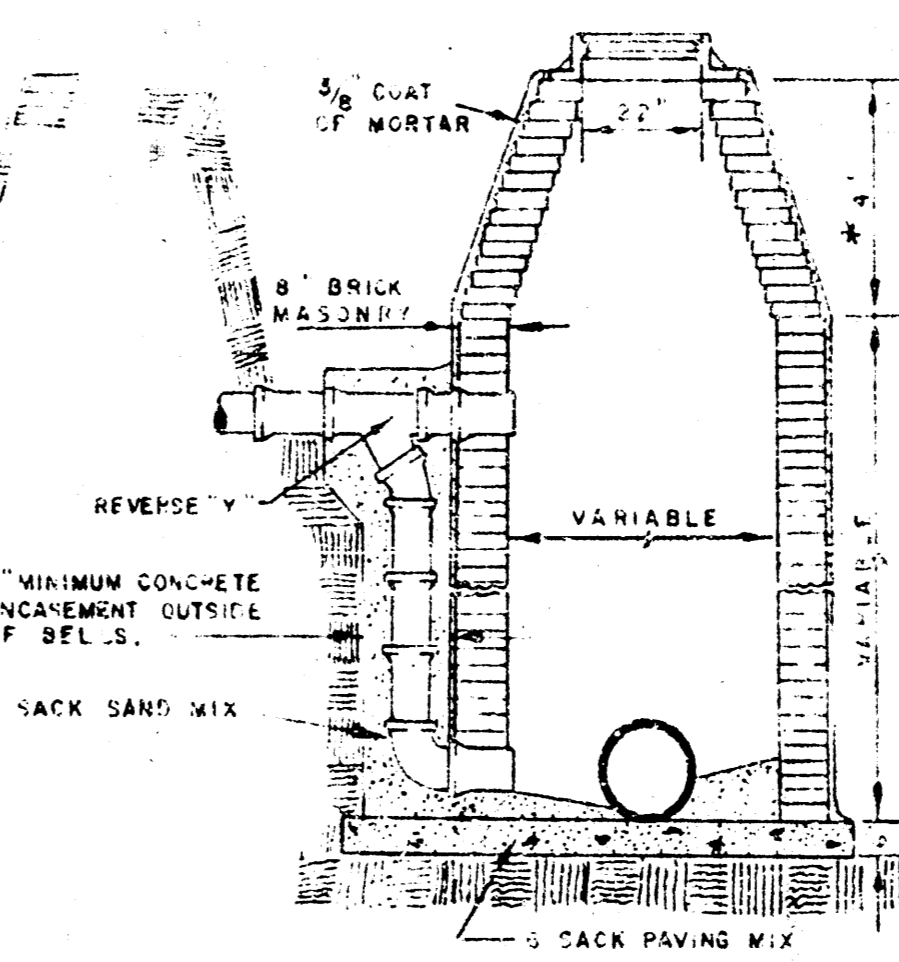
STANDARD MANHOLE TYPE "B"



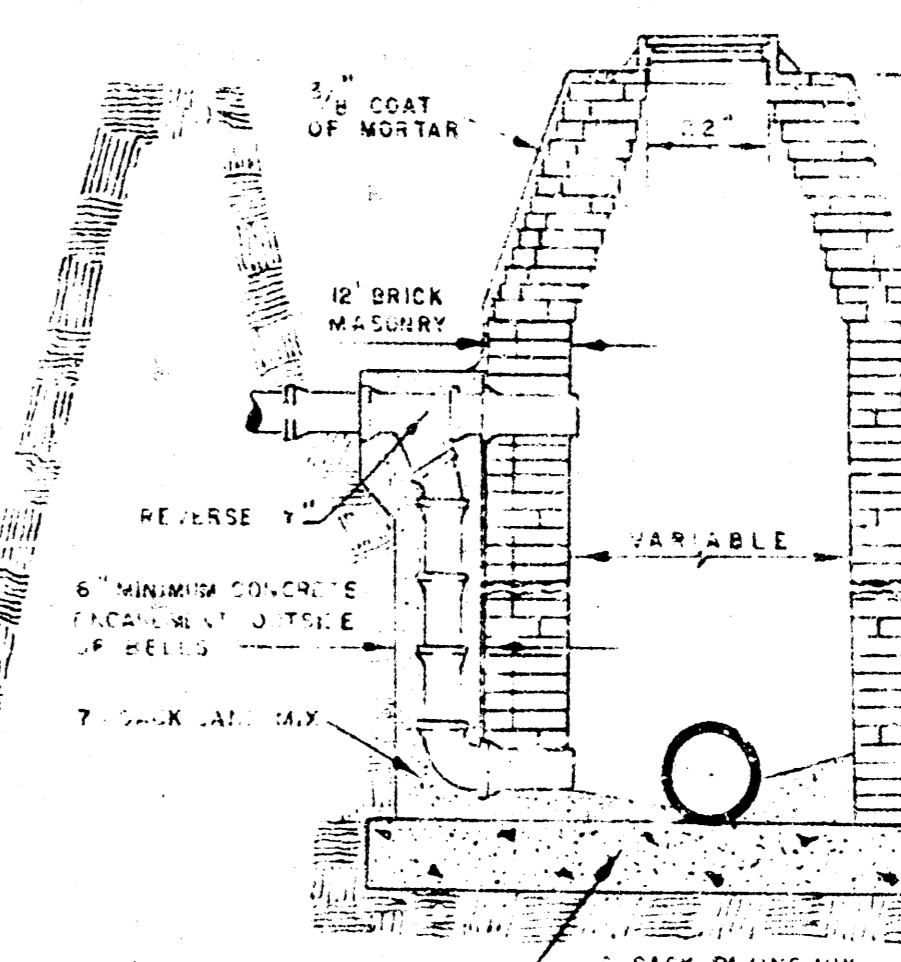
DROP MANHOLE TYPE "A"



DROP MANHOLE TYPE "B"

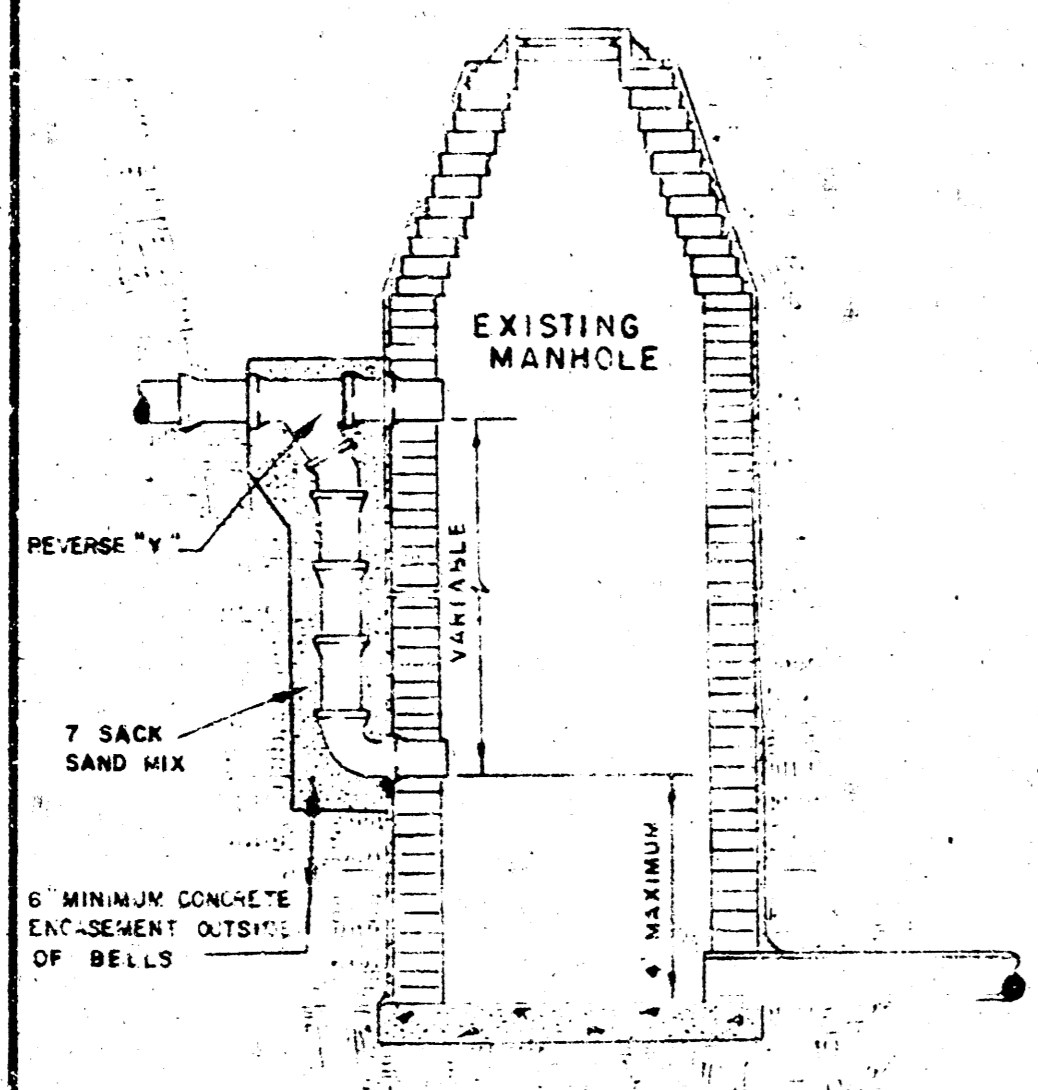


OUTSIDE DROP MANHOLE TYPE "A"

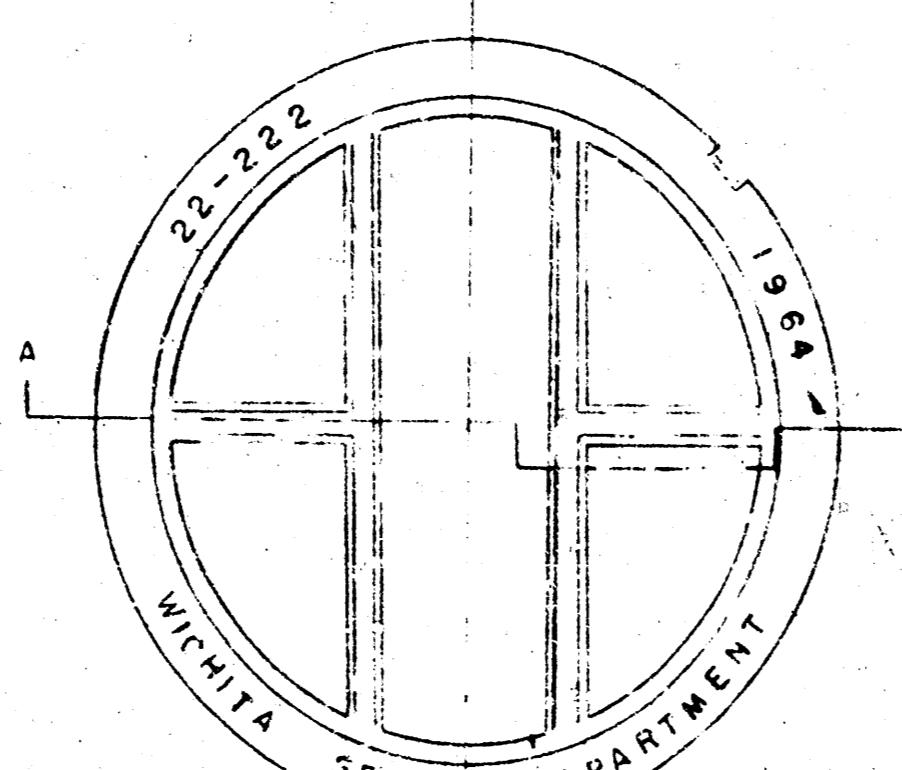


OUTSIDE DROP MANHOLE TYPE "B"

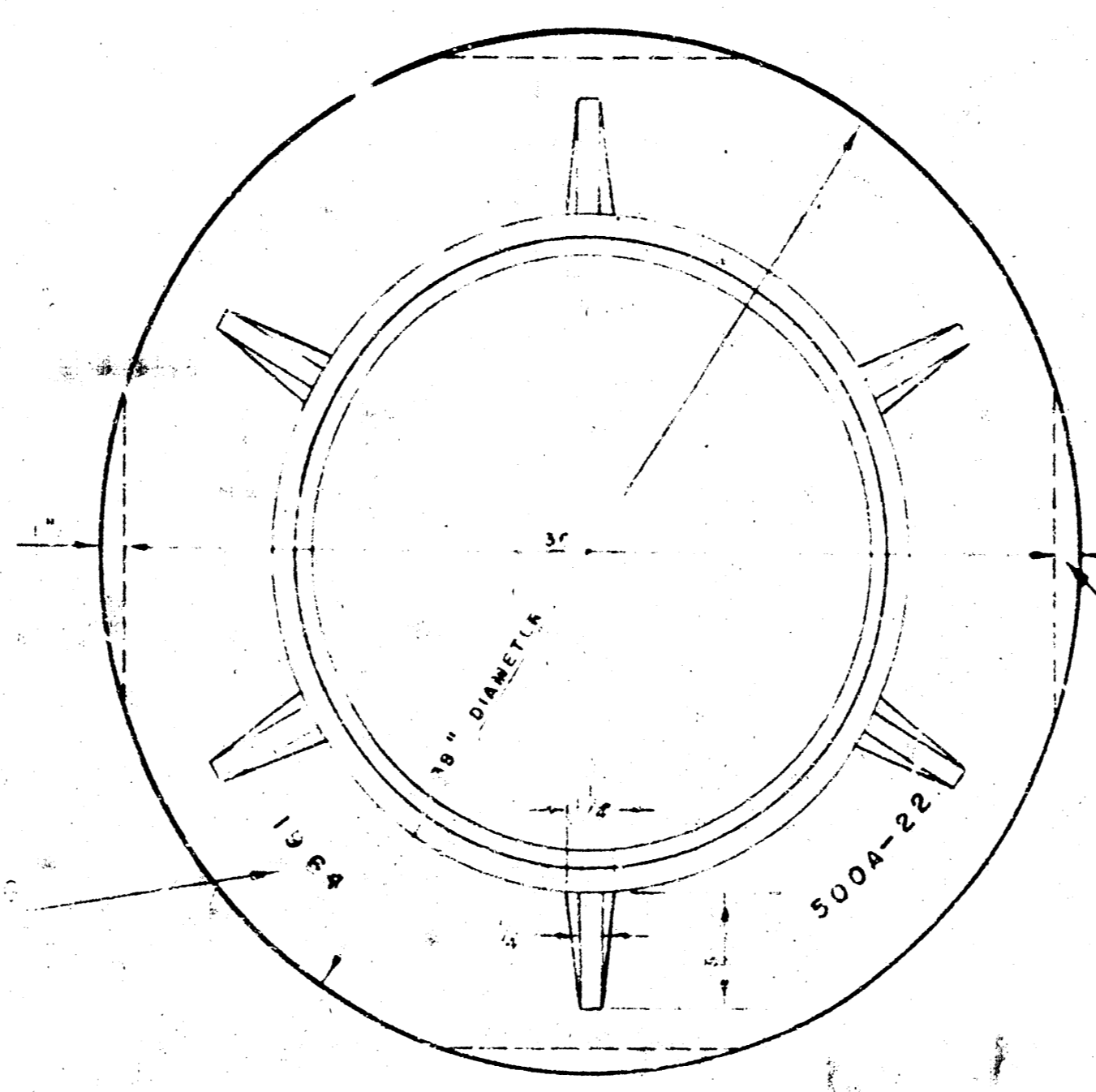
* DRAW = 6" ON 5' DIA. M.H.



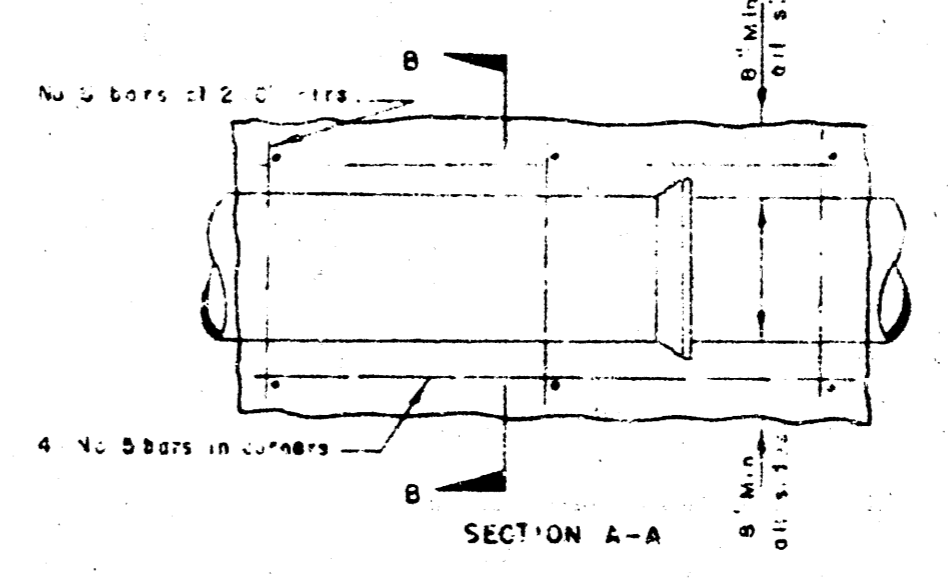
DETAIL OF DROP STACK FOR EXISTING MANHOLES IN GROUND WATER



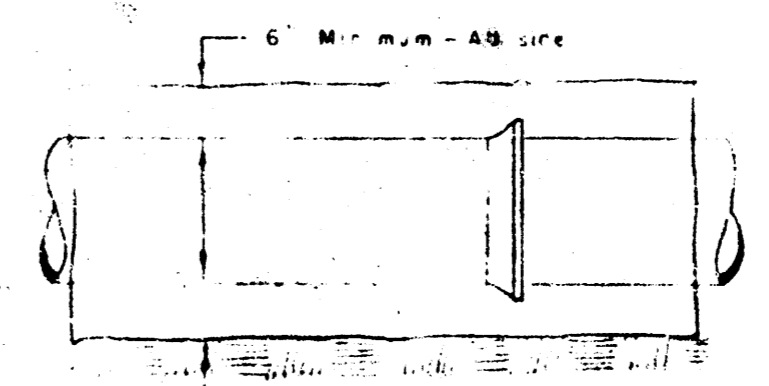
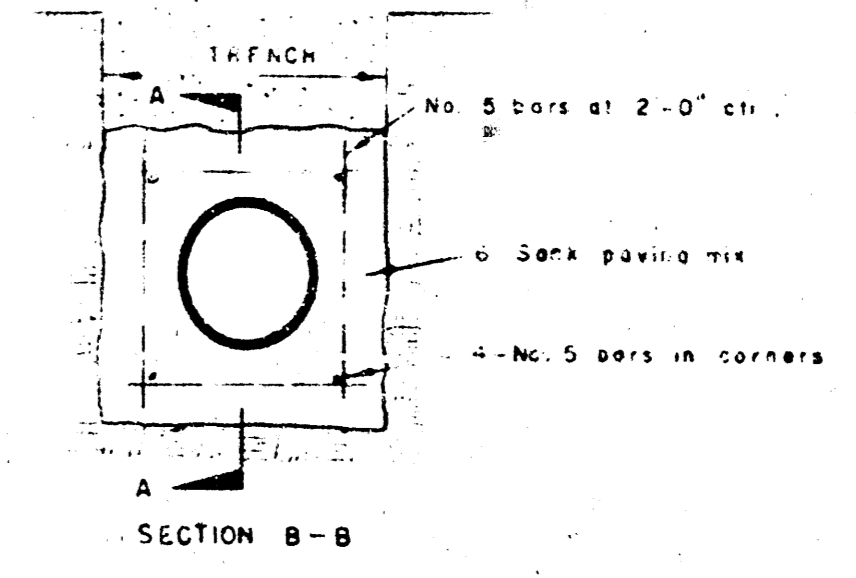
MANHOLE COVER



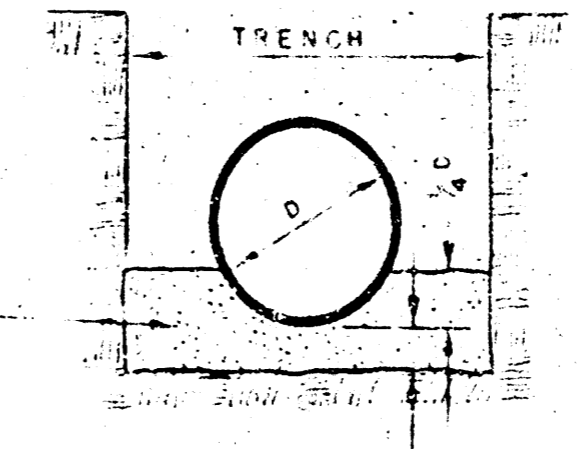
MANHOLE RING



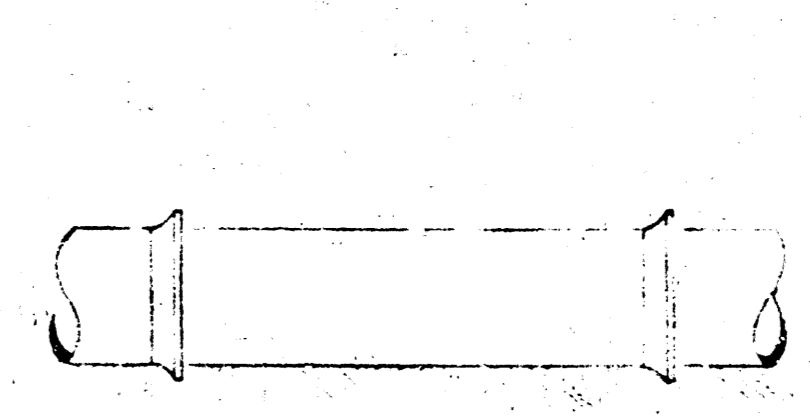
REINFORCED CONCRETE ENCASEMENT FOR STRENGTH



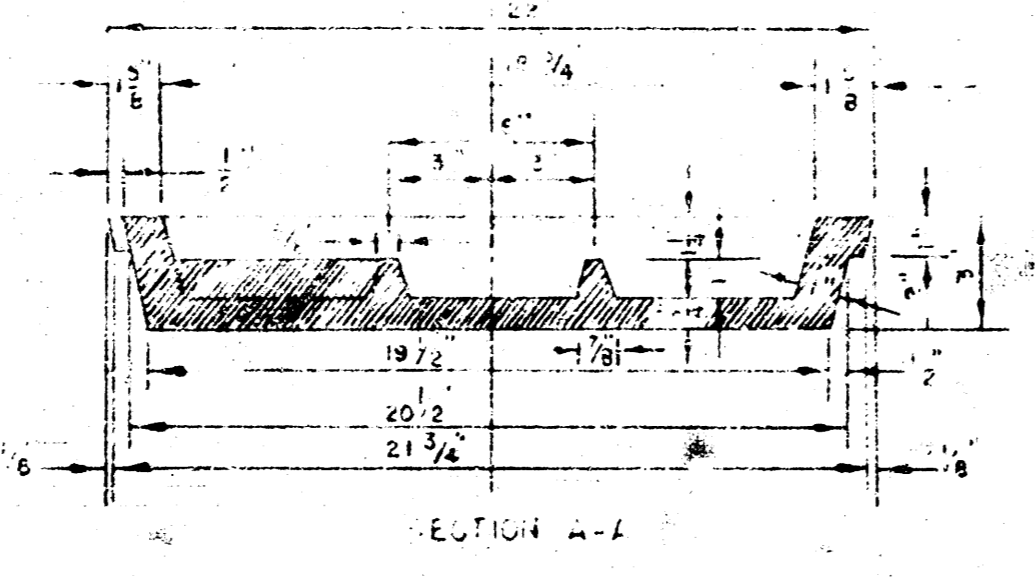
CONCRETE ENCASEMENT FOR COVER



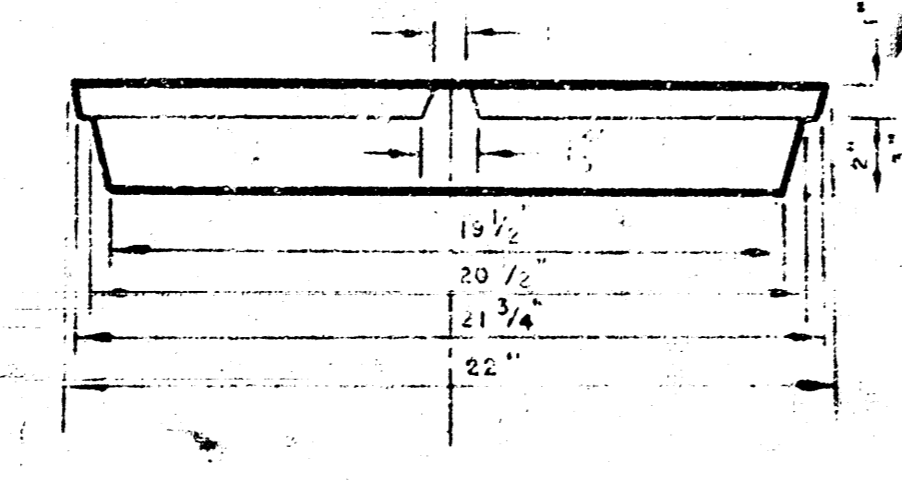
DETAIL OF CONCRETE CRADLE



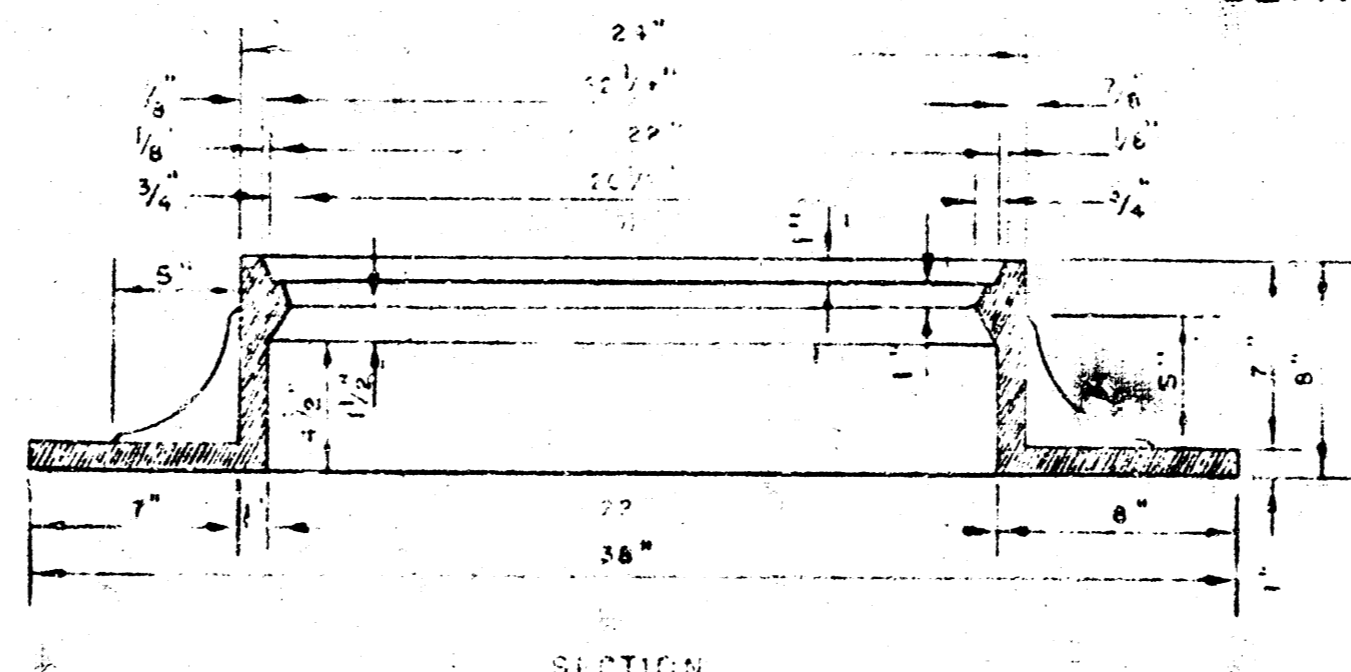
ORDINARY BEDDING METHOD FOR CLAY PIPE



MANHOLE COVER

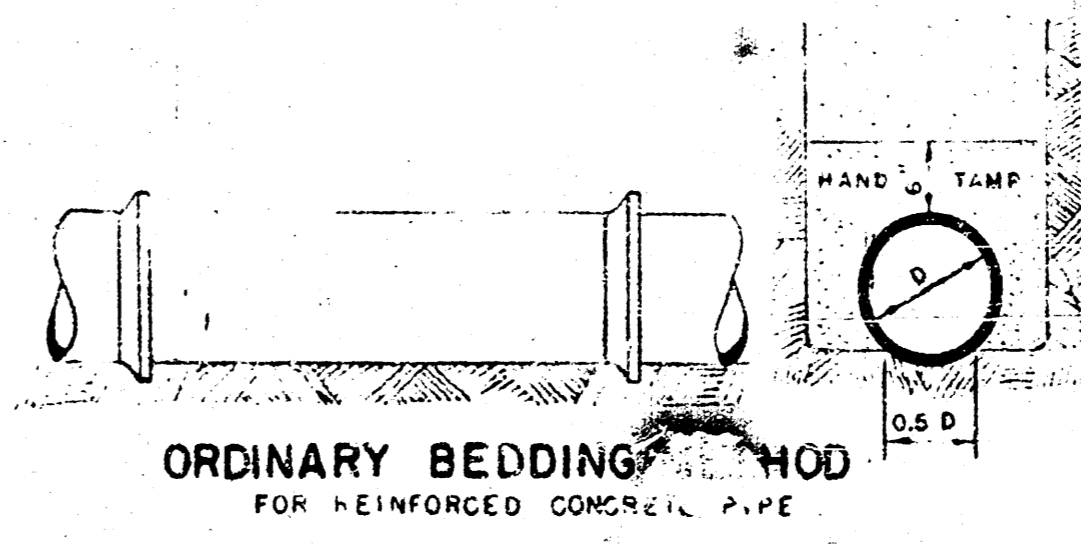


MANHOLE COVER



MANHOLE RING

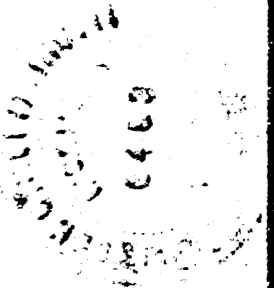
OUTSIDE DIMENSION OF COVER AND THE COVER FACE AND SEAT OF RING TO BE MACHINE FIT.



ORDINARY BEDDING METHOD FOR REINFORCED CONCRETE PIPE

MANHOLES
 THE CONCRETE USED FOR MORTAR IN MANHOLES SHALL CONTAIN 8 SACKS OF CEMENT PER CUBIC YARD.
 STANDARD MANHOLES AND DROP MANHOLES, REGARDLESS OF DIAMETER, SHALL BE BID AT ONE PRICE AS STANDARD MANHOLES.
 SINGLE OR DOUBLE OUTSIDE DROP MANHOLES SHALL BE BID AT ONE PRICE AS OUTSIDE DROP MANHOLES.
 ALL MANHOLES WITH PIPES LARGER THAN 24" SHALL BE 5' DIAMETER UNLESS OTHERWISE SPECIFIED ON PLAN. ALL M.H.'S WITH PIPES 24" & SMALLER SHALL BE 4' DIA.

DETAILS OF
SEWER APPURTENANCES
 ADOPTED AS STANDARD DESIGN
 BY
 ENGINEERING DIVISION
 CITY OF WICHITA, KANSAS
 DON C. MOHRING, C.E.
 CONSULTING ENGINEERS
 1968



3/3
 C-8