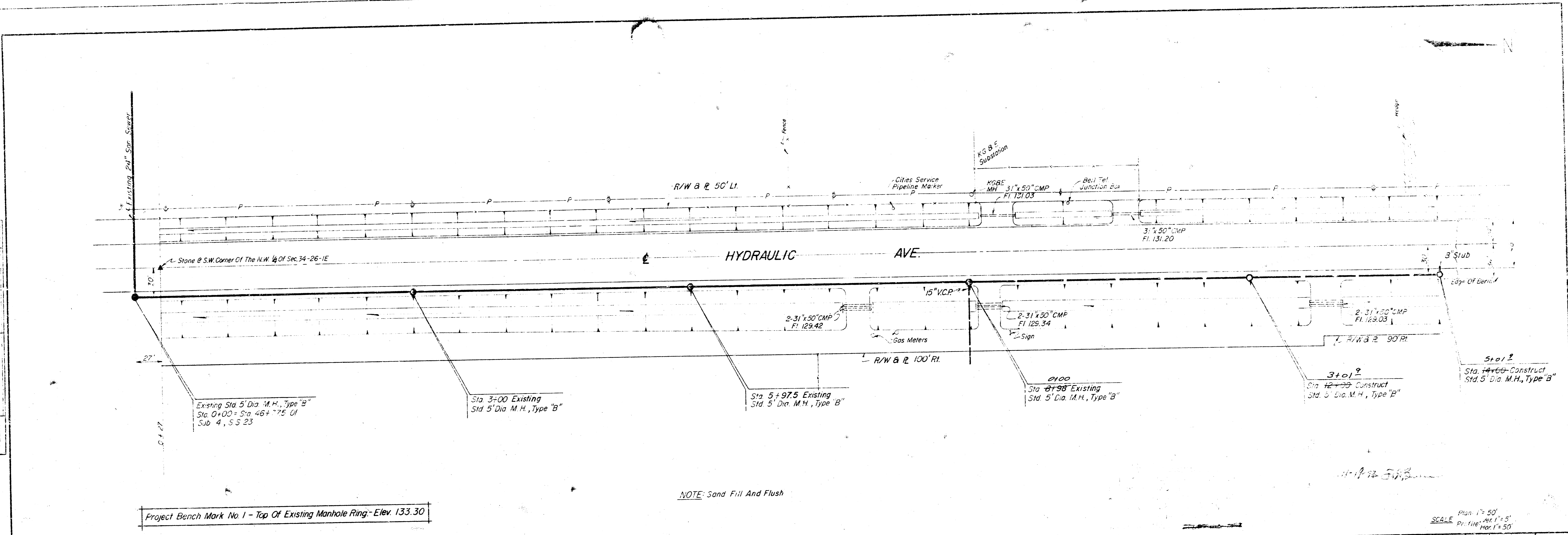


PLAN
 DRAWN BY: [blank]
 CHECKED BY: [blank]
 DATE: [blank]
 PROJECT: [blank]
 SHEET: [blank]

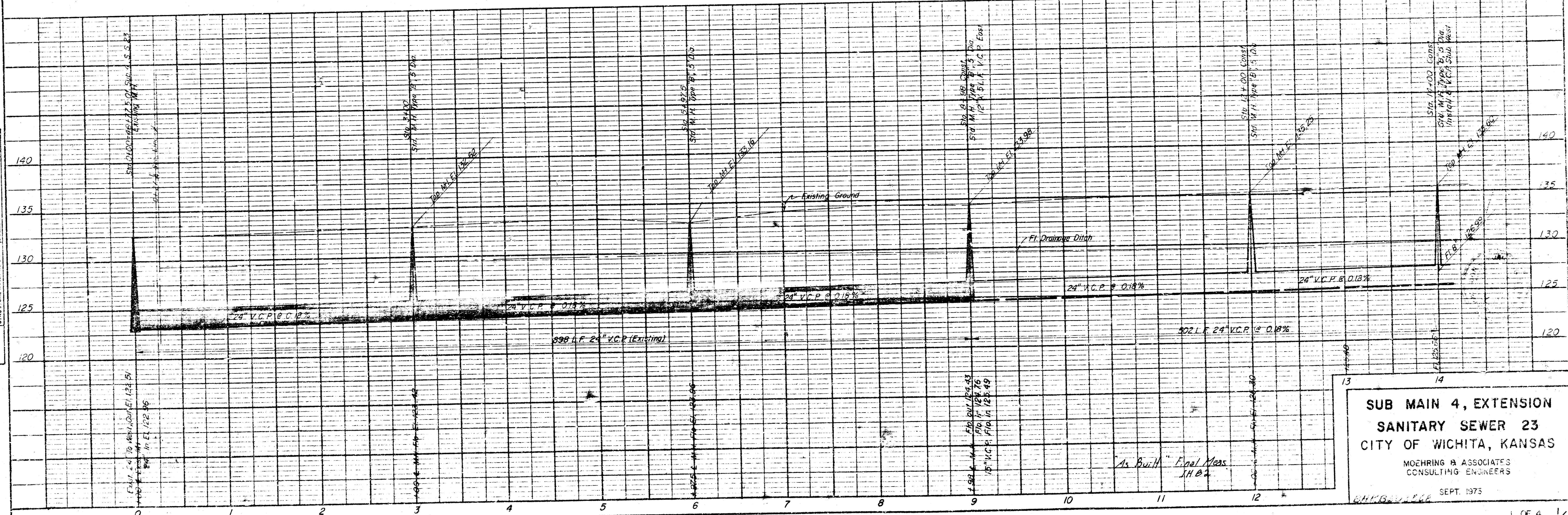
PROFILE
 DRAWN BY: [blank]
 CHECKED BY: [blank]
 DATE: [blank]
 PROJECT: [blank]
 SHEET: [blank]



Project Bench Mark No. 1 - Top Of Existing Manhole Ring - Elev. 133.30

NOTE: Sand Fill And Flush

SCALE: Plan 1" = 50'
 Profile 1" = 5'



**SUB MAIN 4, EXTENSION
 SANITARY SEWER 23
 CITY OF WICHITA, KANSAS**
 MOEHRING & ASSOCIATES
 CONSULTING ENGINEERS
 SEPT. 1975

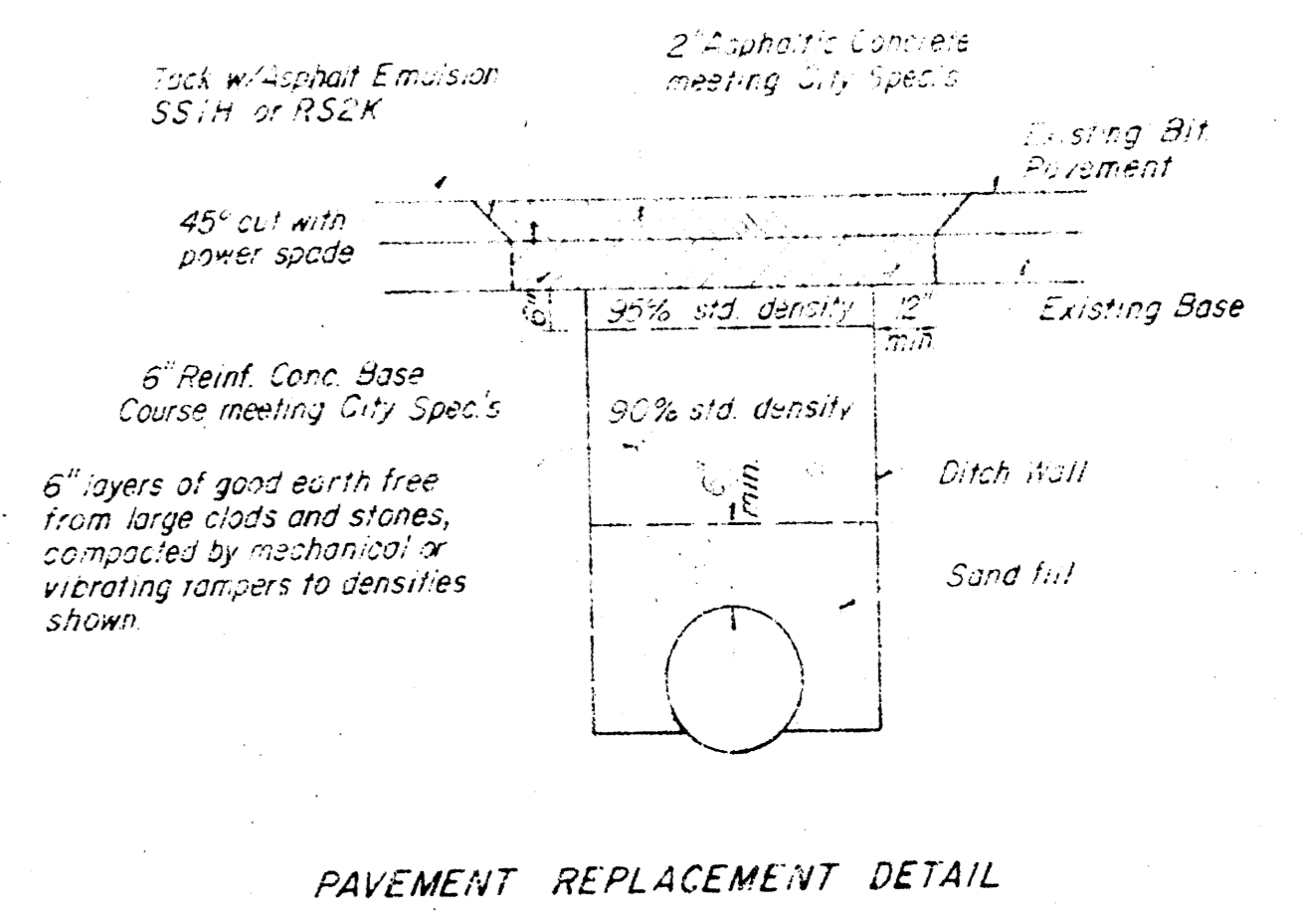
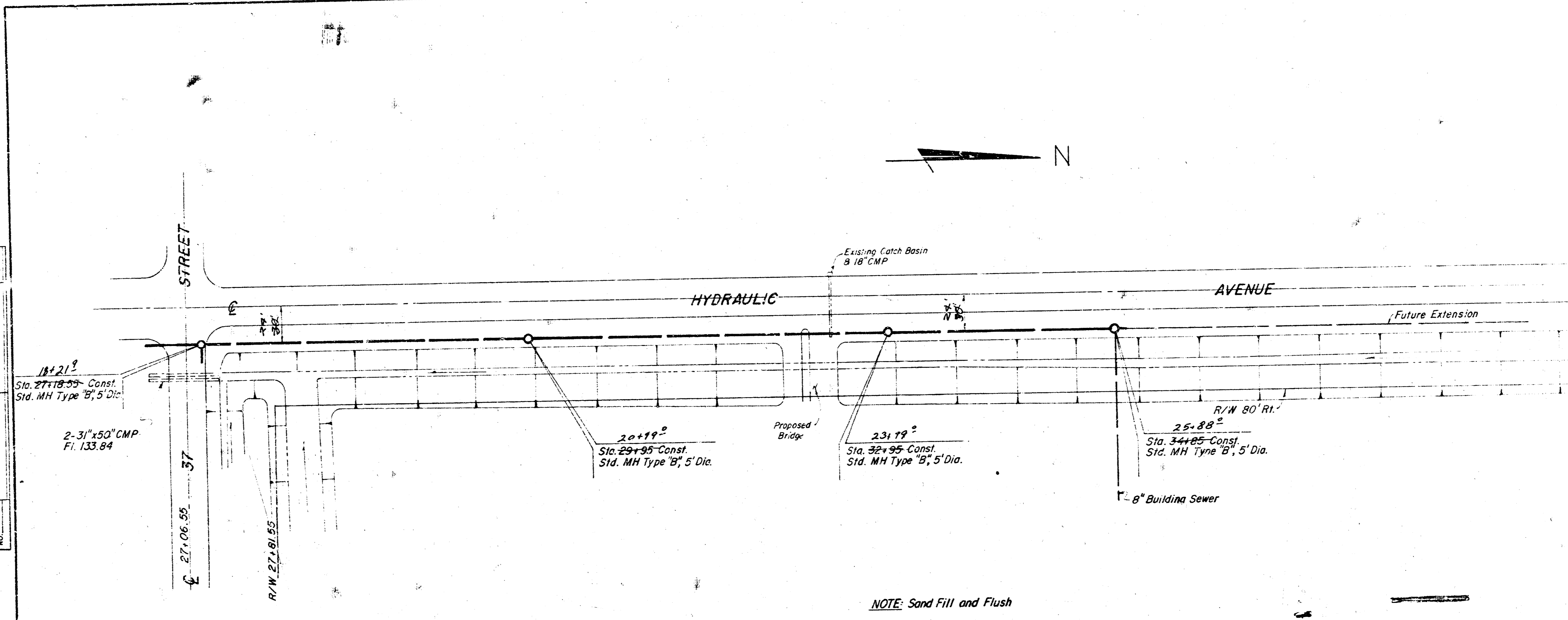


COUNTY OF SEDGWICK

HIGHWAY DEPARTMENT

1001 W. CENTRAL AVENUE
WICHITA, KANSAS 67202
COUNTY ENGINEER
Kovc. Ser. 1, 1973

DATE	
BY	
NO. 1	
NO. 2	
NO. 3	
NO. 4	
NO. 5	
NO. 6	
NO. 7	
NO. 8	
NO. 9	
NO. 10	
NO. 11	
NO. 12	
NO. 13	
NO. 14	
NO. 15	
NO. 16	
NO. 17	
NO. 18	
NO. 19	
NO. 20	
NO. 21	
NO. 22	
NO. 23	
NO. 24	
NO. 25	
NO. 26	
NO. 27	
NO. 28	
NO. 29	
NO. 30	
NO. 31	
NO. 32	
NO. 33	
NO. 34	
NO. 35	
NO. 36	
NO. 37	
NO. 38	
NO. 39	
NO. 40	
NO. 41	
NO. 42	
NO. 43	
NO. 44	
NO. 45	
NO. 46	
NO. 47	
NO. 48	
NO. 49	
NO. 50	
NO. 51	
NO. 52	
NO. 53	
NO. 54	
NO. 55	
NO. 56	
NO. 57	
NO. 58	
NO. 59	
NO. 60	
NO. 61	
NO. 62	
NO. 63	
NO. 64	
NO. 65	
NO. 66	
NO. 67	
NO. 68	
NO. 69	
NO. 70	
NO. 71	
NO. 72	
NO. 73	
NO. 74	
NO. 75	
NO. 76	
NO. 77	
NO. 78	
NO. 79	
NO. 80	
NO. 81	
NO. 82	
NO. 83	
NO. 84	
NO. 85	
NO. 86	
NO. 87	
NO. 88	
NO. 89	
NO. 90	
NO. 91	
NO. 92	
NO. 93	
NO. 94	
NO. 95	
NO. 96	
NO. 97	
NO. 98	
NO. 99	
NO. 100	



NOTE: Sand Fill and Flush

SCALE
1\"/>

Mr. Don Moehring II
Brown Building
Wichita, Kansas

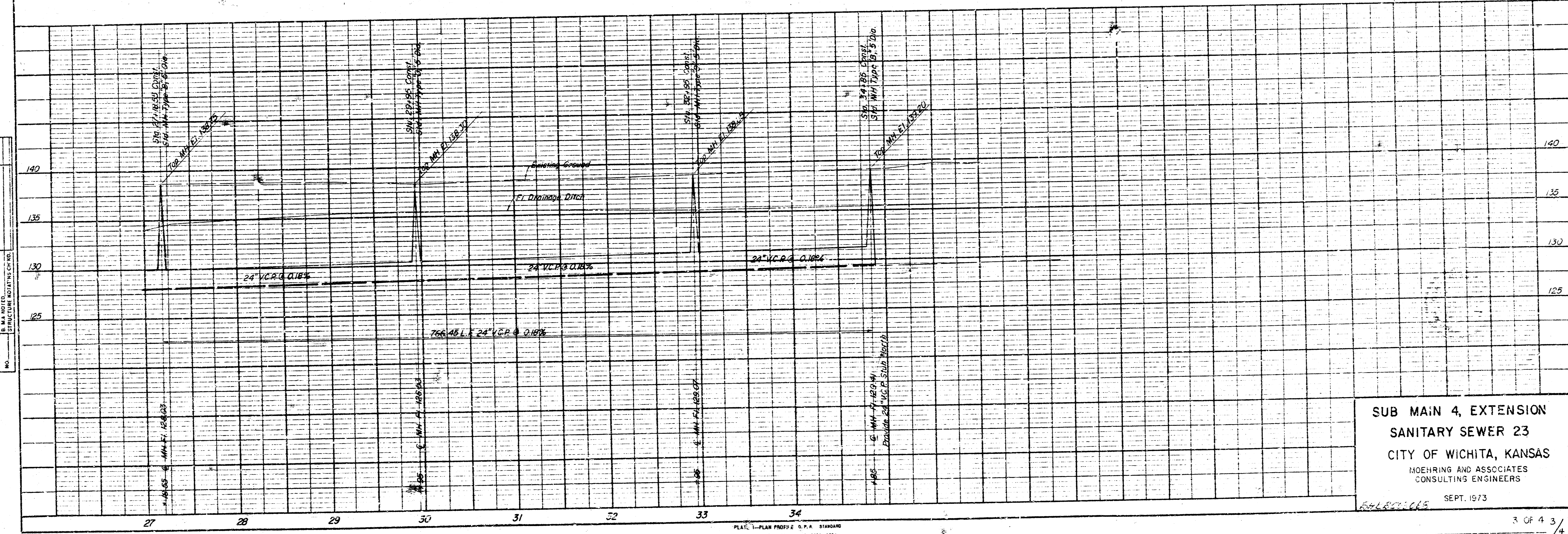
Dear Mr. Moehring,

This office has examined the plans for Sub Main 4, Extension Sanitary Sewer 23, City of Wichita, Kansas. We have no objection for its approval.

Very truly yours,
C. C. McClure, Jr., P. E.
Sedgwick County Engineer

N. J. Graham
N. J. Graham
Engineering Aide II

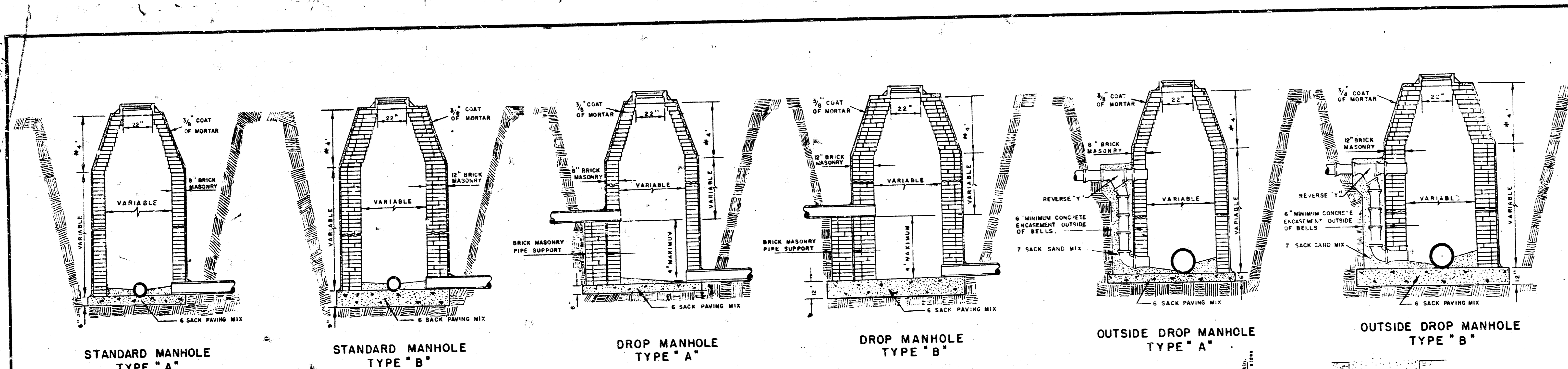
DATE	
BY	
NO. 1	
NO. 2	
NO. 3	
NO. 4	
NO. 5	
NO. 6	
NO. 7	
NO. 8	
NO. 9	
NO. 10	
NO. 11	
NO. 12	
NO. 13	
NO. 14	
NO. 15	
NO. 16	
NO. 17	
NO. 18	
NO. 19	
NO. 20	
NO. 21	
NO. 22	
NO. 23	
NO. 24	
NO. 25	
NO. 26	
NO. 27	
NO. 28	
NO. 29	
NO. 30	
NO. 31	
NO. 32	
NO. 33	
NO. 34	
NO. 35	
NO. 36	
NO. 37	
NO. 38	
NO. 39	
NO. 40	
NO. 41	
NO. 42	
NO. 43	
NO. 44	
NO. 45	
NO. 46	
NO. 47	
NO. 48	
NO. 49	
NO. 50	
NO. 51	
NO. 52	
NO. 53	
NO. 54	
NO. 55	
NO. 56	
NO. 57	
NO. 58	
NO. 59	
NO. 60	
NO. 61	
NO. 62	
NO. 63	
NO. 64	
NO. 65	
NO. 66	
NO. 67	
NO. 68	
NO. 69	
NO. 70	
NO. 71	
NO. 72	
NO. 73	
NO. 74	
NO. 75	
NO. 76	
NO. 77	
NO. 78	
NO. 79	
NO. 80	
NO. 81	
NO. 82	
NO. 83	
NO. 84	
NO. 85	
NO. 86	
NO. 87	
NO. 88	
NO. 89	
NO. 90	
NO. 91	
NO. 92	
NO. 93	
NO. 94	
NO. 95	
NO. 96	
NO. 97	
NO. 98	
NO. 99	
NO. 100	



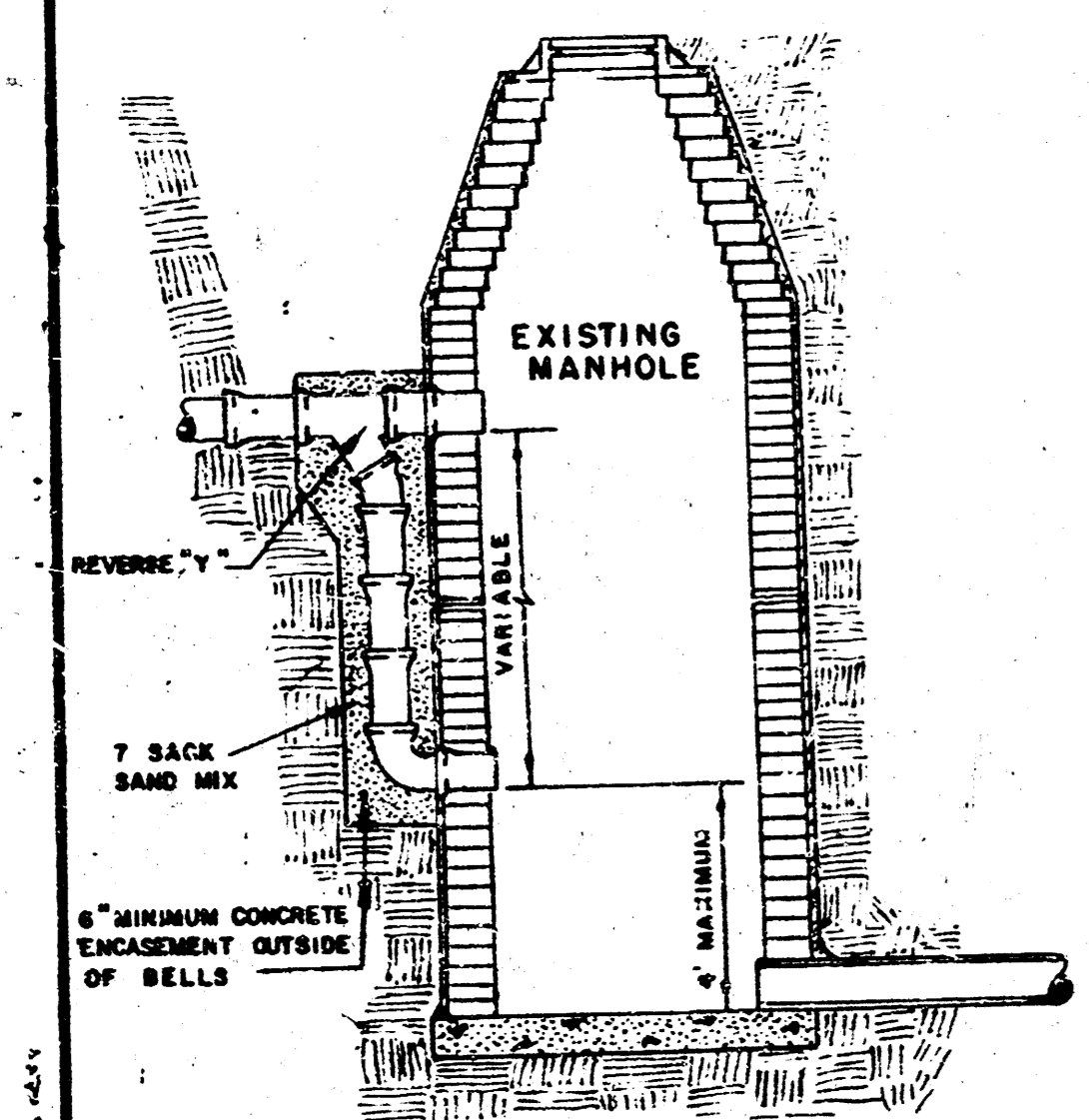
**SUB MAIN 4, EXTENSION
SANITARY SEWER 23
CITY OF WICHITA, KANSAS**
MOEHRING AND ASSOCIATES
CONSULTING ENGINEERS
SEPT. 1973

PLAT 1-PLAN PROFILE & P.P.A. STATIONS
THE PRECEDING TITLE IS CORRECTED.

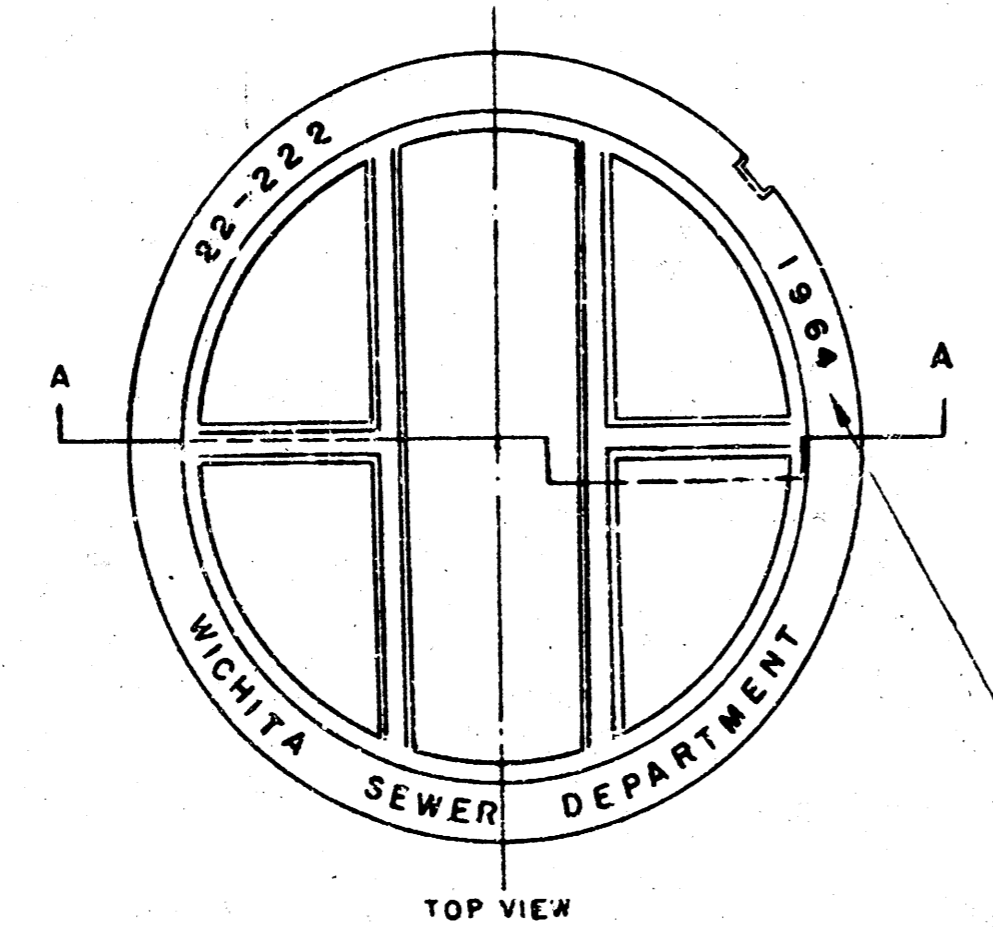
FILMED FROM THE BEST AVAILABLE COPY



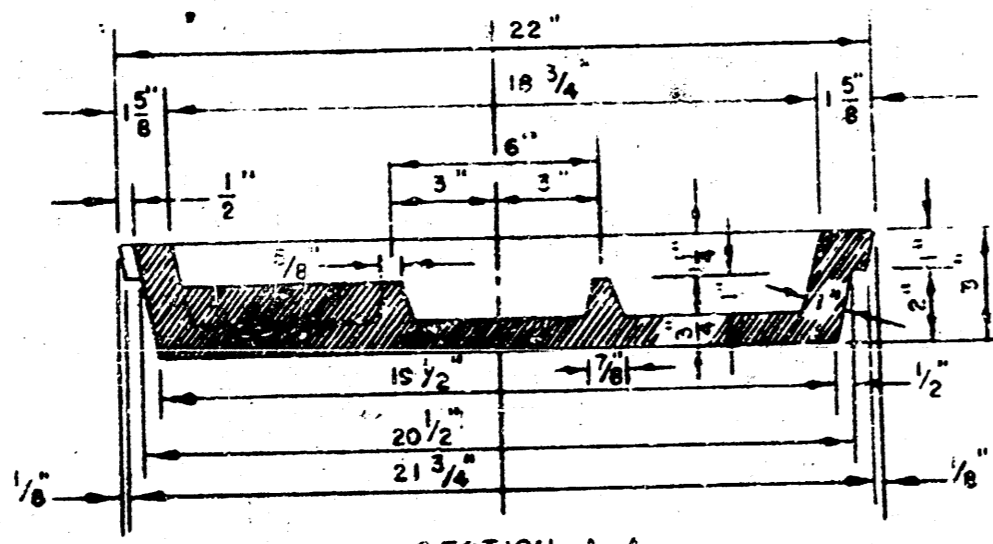
* DRAW = 6' ON 5' DIA. M.H.



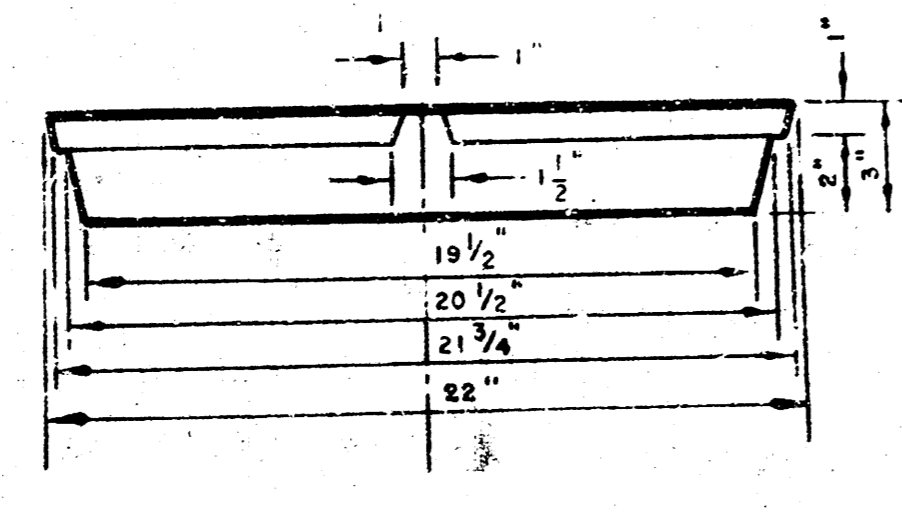
DETAIL OF DROP STACK FOR EXISTING MANHOLES IN GROUND WATER



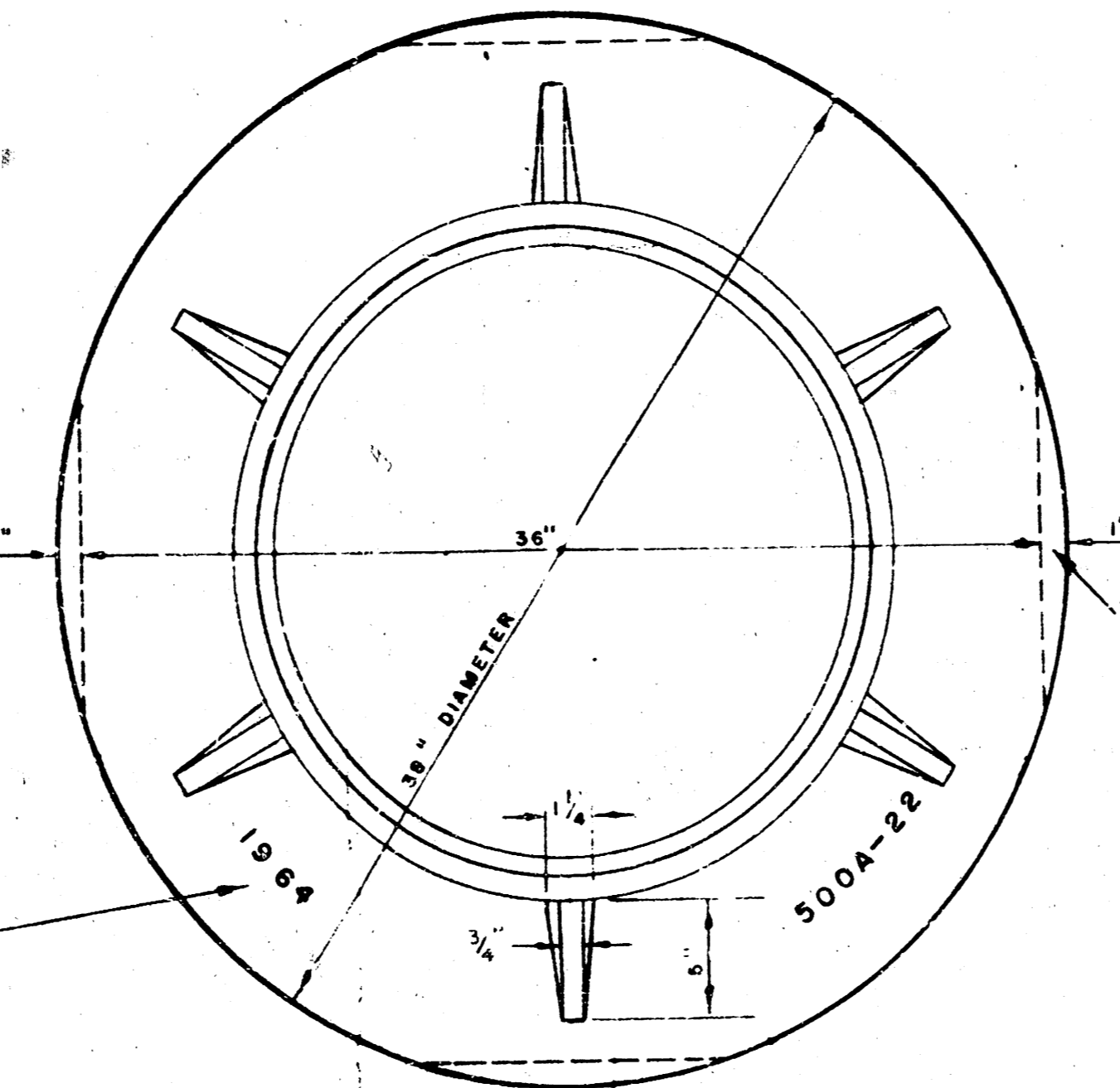
TOP VIEW MANHOLE COVER WEIGHT 110 lbs.



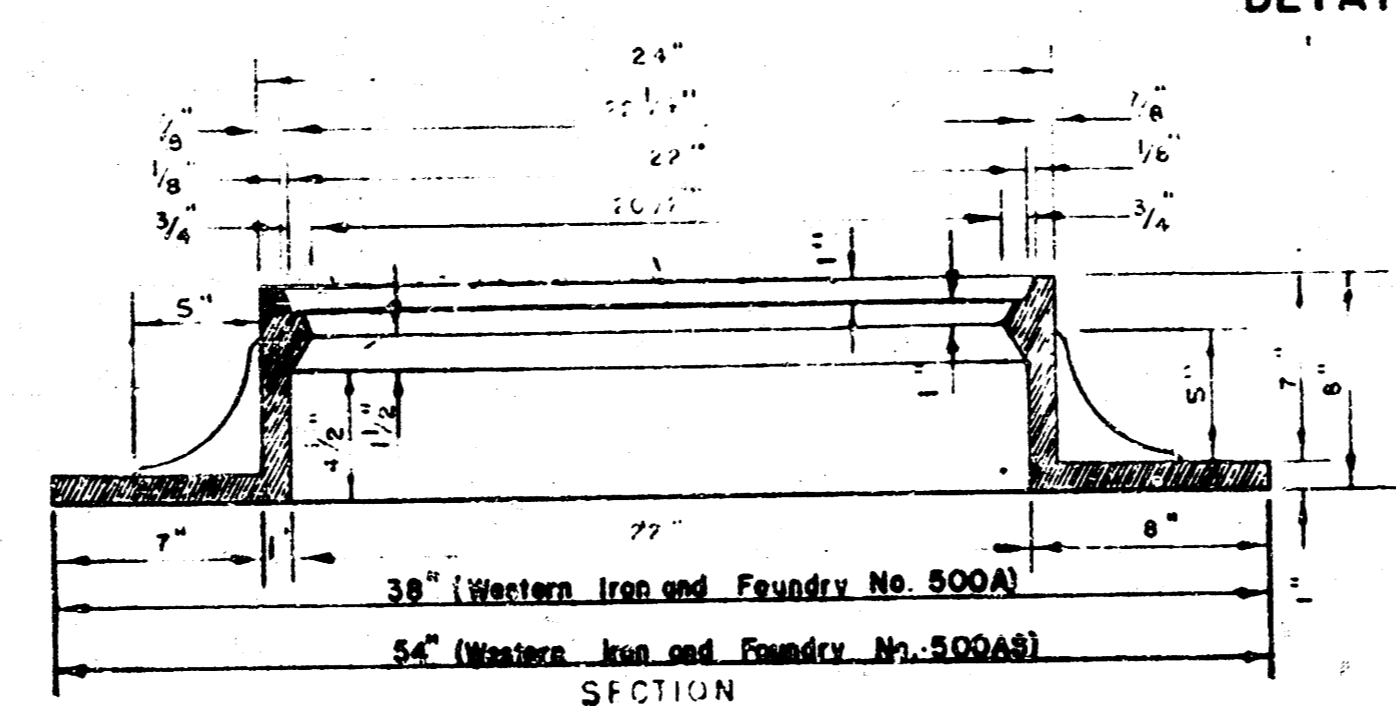
SECTION A-A MANHOLE COVER



SIDE VIEW MANHOLE COVER

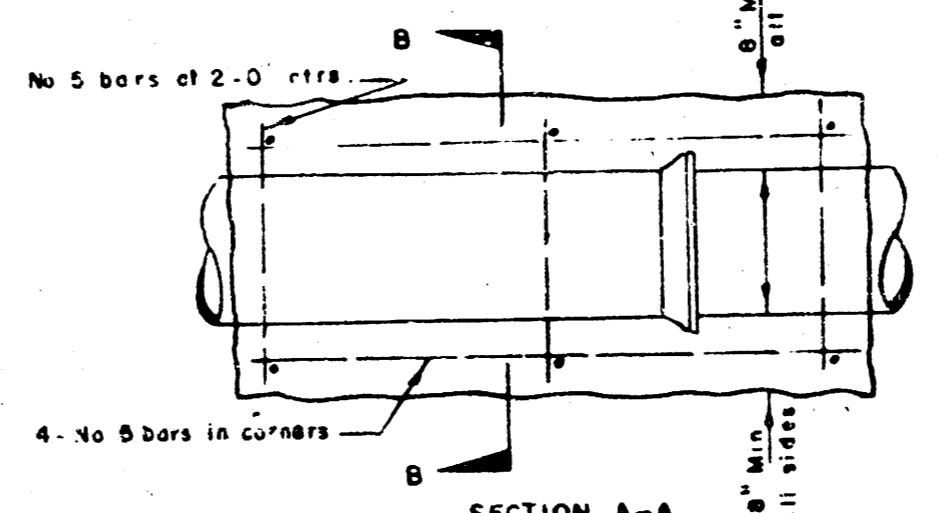


TOP VIEW MANHOLE RING WEIGHT 355 lbs.

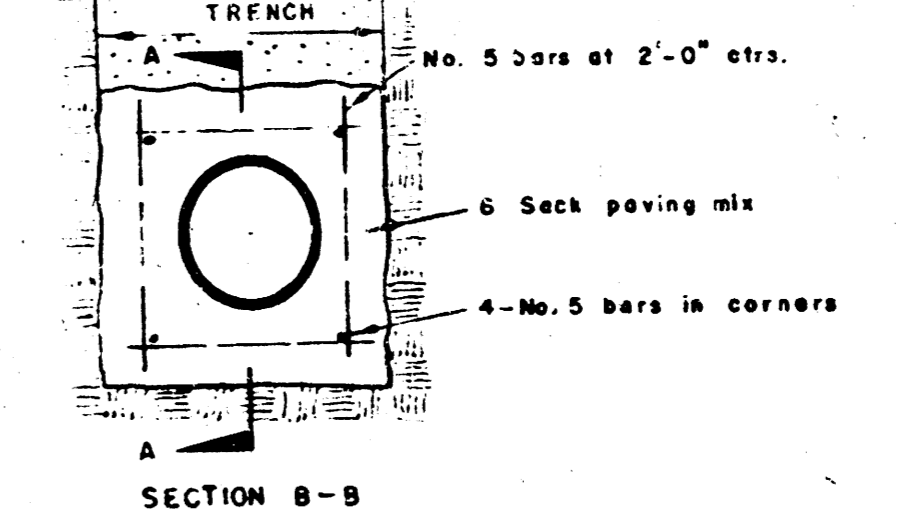


SECTION MANHOLE RING

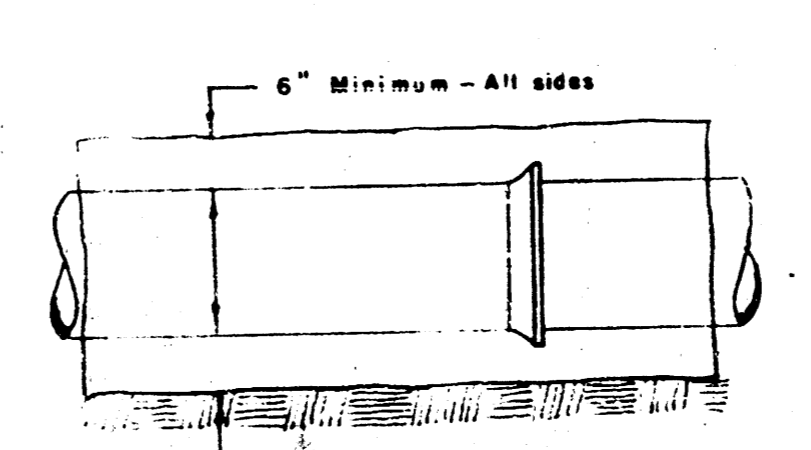
OUTSIDE CIRCUMFERENCE OF COVER AND THE INNER FACE AND SEAT OF RING TO BE MACHINE FIT.



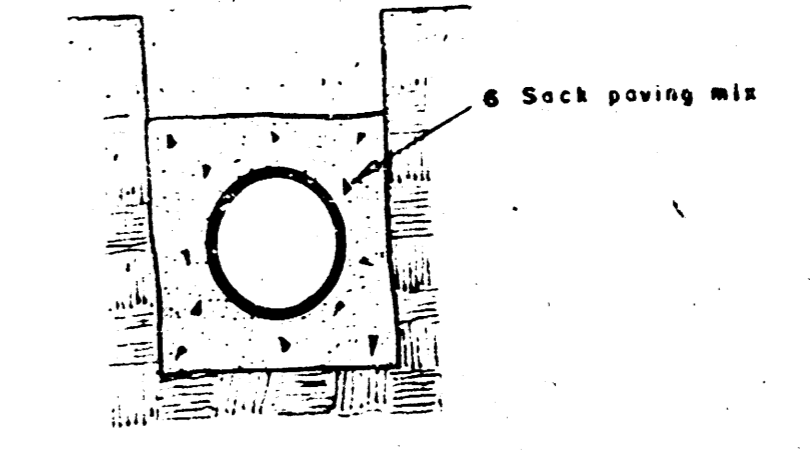
REINFORCED CONCRETE ENCASEMENT FOR STRENGTH



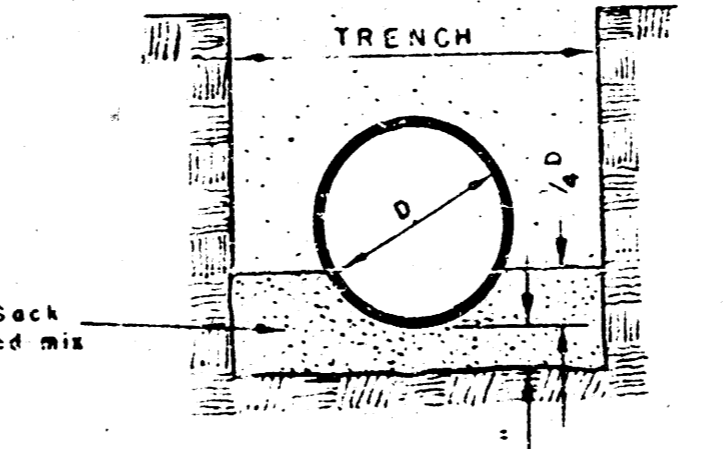
SECTION B-B REINFORCED CONCRETE ENCASEMENT FOR STRENGTH



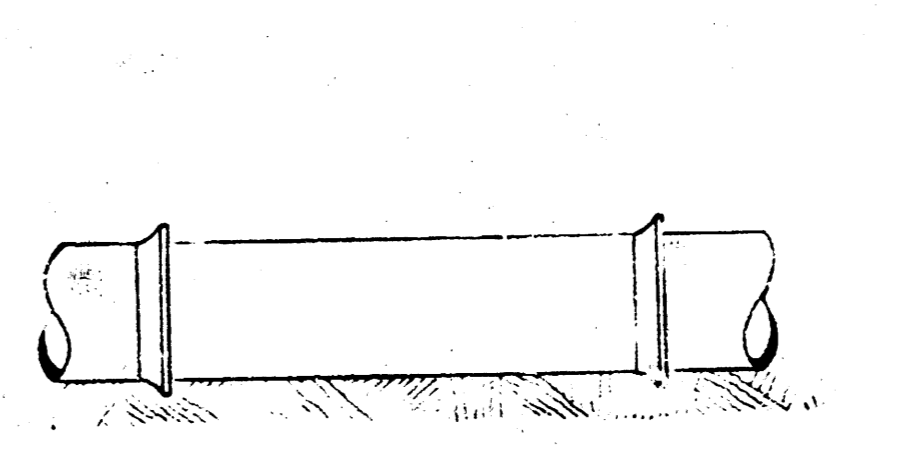
CONCRETE ENCASEMENT FOR COVER



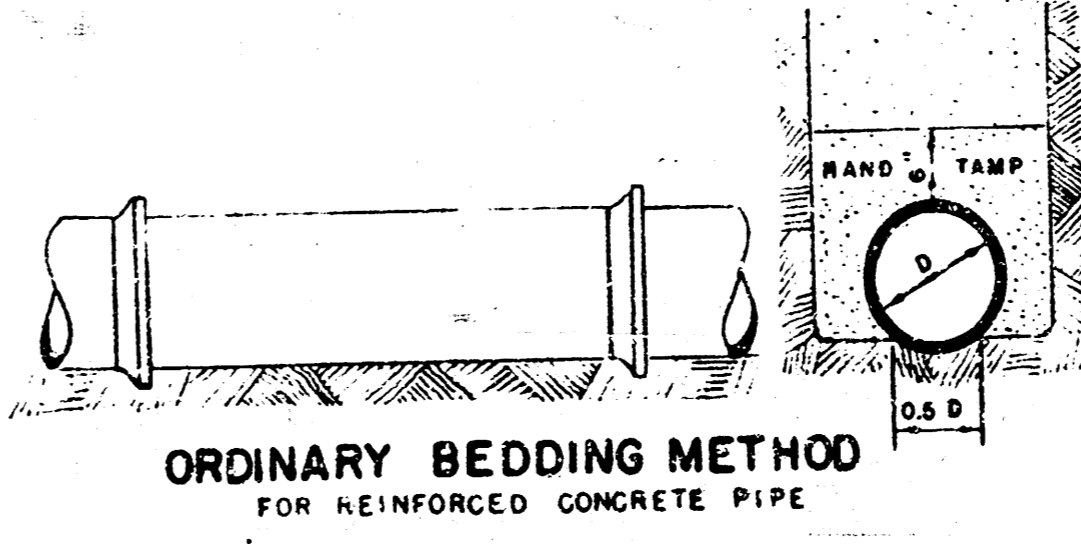
CONCRETE ENCASEMENT FOR COVER



DETAIL OF CONCRETE CRADLE

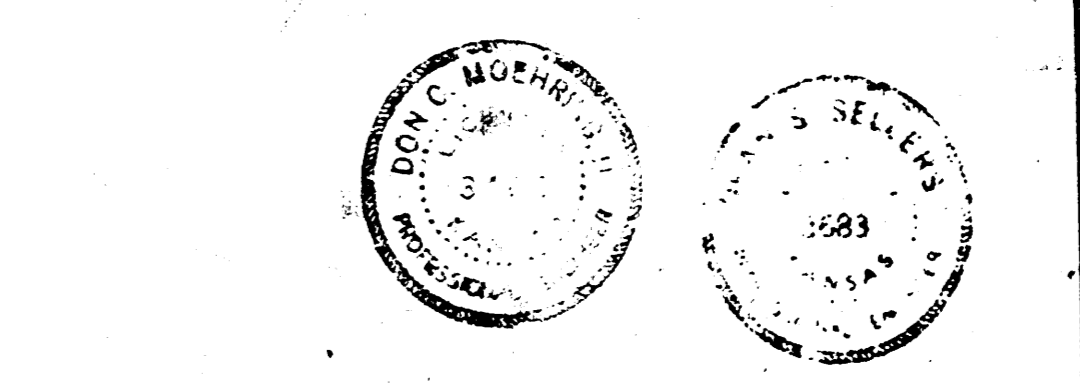


ORDINARY BEDDING METHOD FOR CLAY PIPE



ORDINARY BEDDING METHOD FOR REINFORCED CONCRETE PIPE

MANHOLES
 THE CONCRETE USED FOR MORTAR IN MANHOLES SHALL CONTAIN 8 SACKS OF CEMENT PER CUBIC YARD.
 STANDARD MANHOLES AND DROP MANHOLES, REGARDLESS OF DIAMETER, SHALL BE BID AT ONE PRICE.
 SINGLE OR DOUBLE OUTSIDE DROP MANHOLES SHALL BE BID AT ONE PRICE AS OUTSIDE DROP MANHOLES.
 ALL MANHOLES WITH PIPES LARGER THAN 24" SHALL BE 5' DIAMETER UNLESS OTHERWISE SPECIFIED ON PLAN. ALL M.H.'S WITH PIPES 24" & SMALLER SHALL BE 4' DIA.



DETAILS OF SEWER APPURTENANCES ADOPTED AS STANDARD DESIGN BY ENGINEERING DIVISION CITY OF WICHITA, KANSAS R. W. LINN CITY ENGINEER 1964