

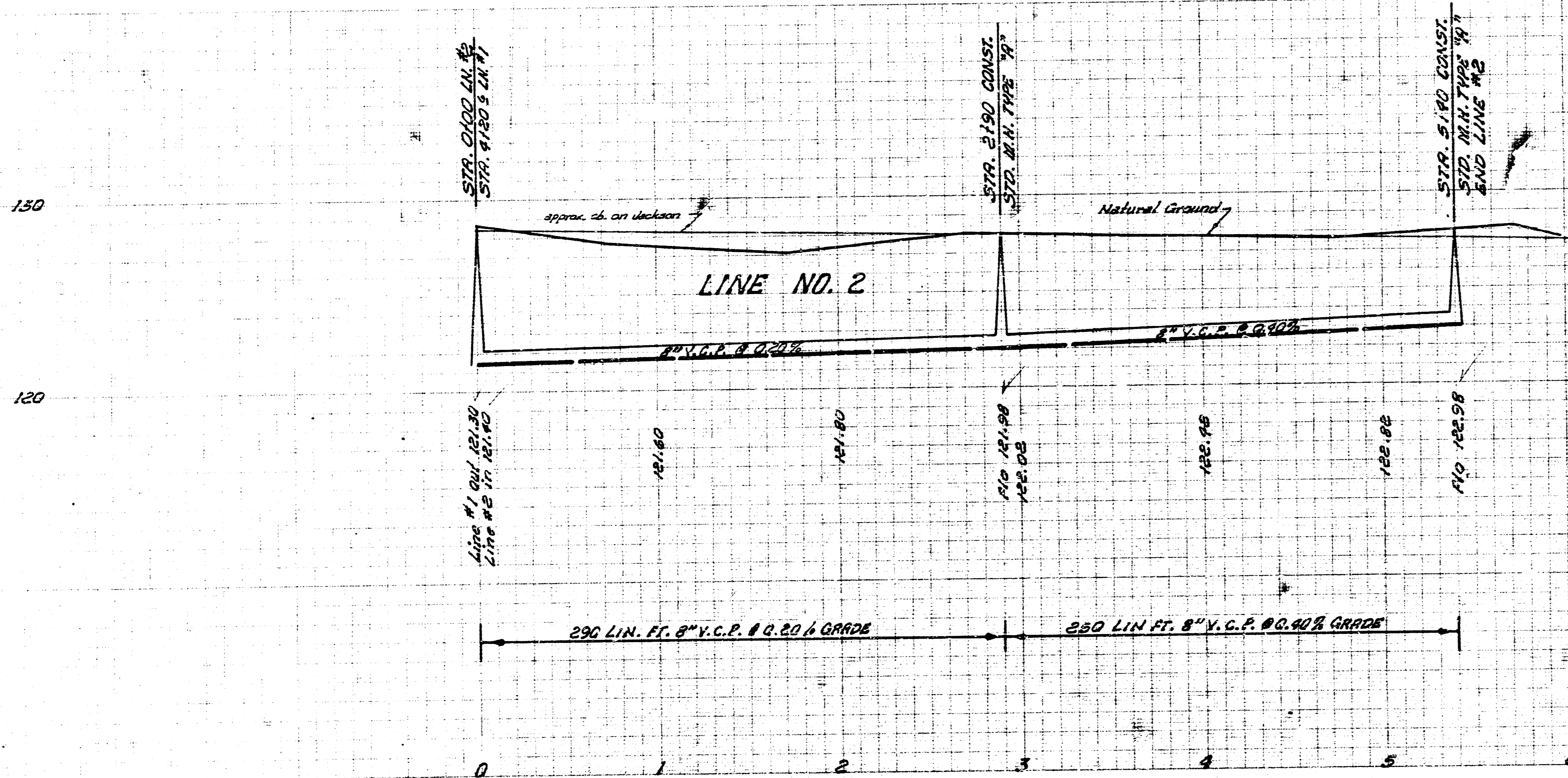
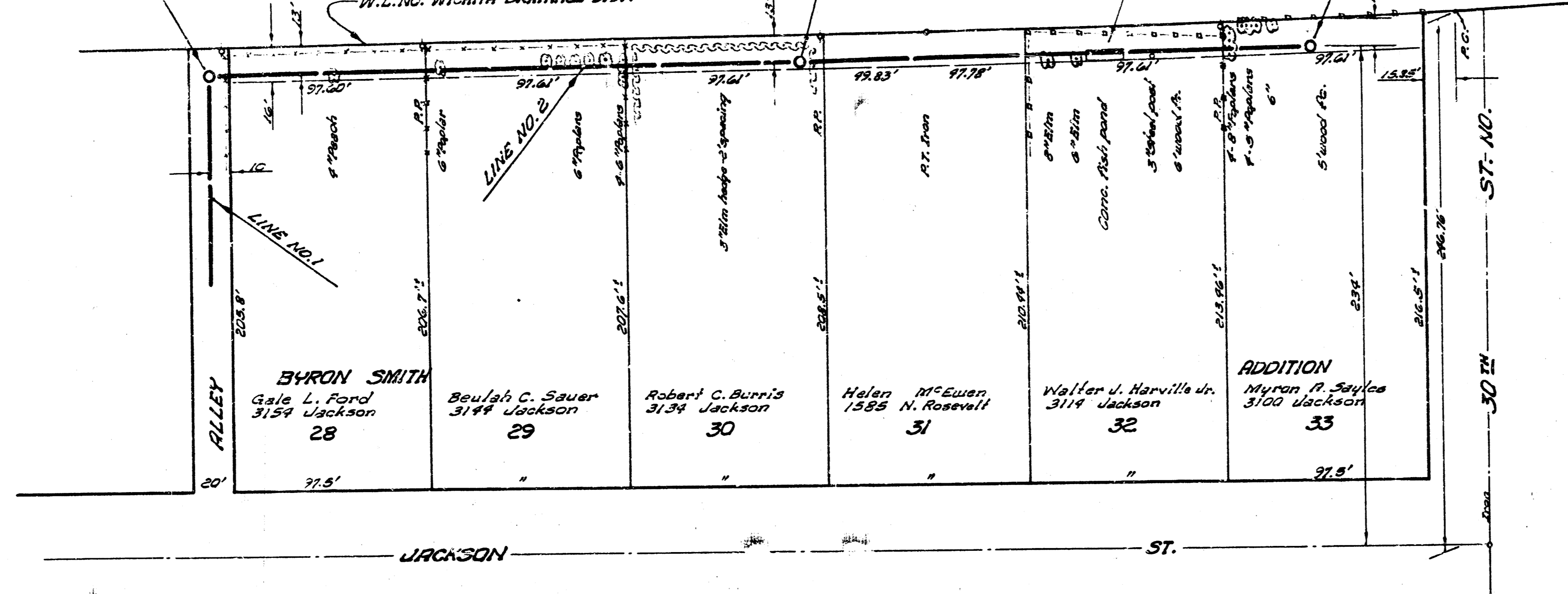
STA. 0100 LN. #2
STA. 9120 LN. #1

W.L. NO. WICHITA DRAINAGE DIST.

STA. 2190 CONST.
STD. M. H. TYPE "A"

FIELD ENGINEER
Alter alignment
to miss fish pond

STA. 5140 CONST.
STD. M. H. TYPE "A"
END LINE #2



2/2

LAT. 28, SUB. 4, S.S. NO. 23
PROJ. NO. C23-80

8 15 1 1