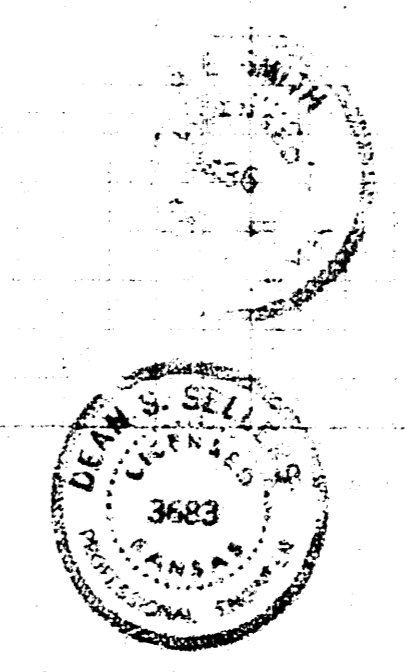
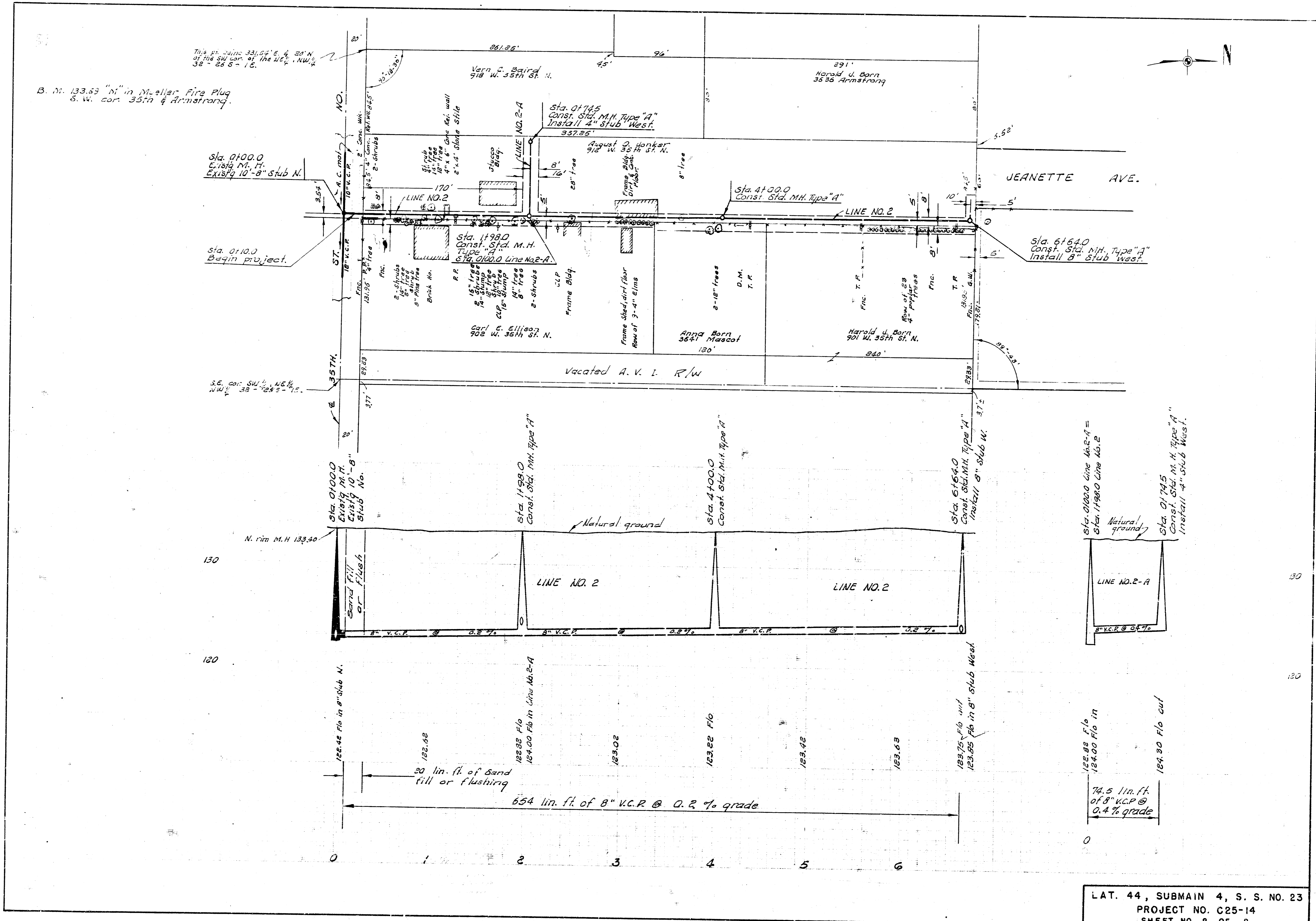


Surveyed by U.S.W. BA 222-Y  
 Checked by

Plan Scale 1" = 10'  
 Profile Scale 1" = 20'

LAT. 44, SUBMAIN 4, S. S. NO. 23  
 CITY OF WICHITA, KANSAS  
 B. E. SMITH CITY ENGINEER  
 OCT. 1966 PROJECT NO. C25-14  
 SHEET NO. 1 OF 2





This pt. being 331.54' E. & 291' N. of the SW cor. of the 1/4, NW 1/4, 32 - 26 8 - 15.

B. M. 133.53 "M" in Muller Fire Plug S.W. cor. 35th & Armstrong.

Sta. 0+00.0 Const. Sta. M.H. Type "A" Install 4" stub West.

Sta. 0+10.0 Const. Sta. M.H. Type "A" Install 4" stub West.

Sta. 0+00.0 Const. Sta. M.H. Type "A" Install 4" stub West.

Sta. 1+99.0 Const. Sta. M.H. Type "A" Install 4" stub West.

Sta. 4+00.0 Const. Sta. M.H. Type "A" Install 4" stub West.

Sta. 6+64.0 Const. Sta. M.H. Type "A" Install 4" stub West.

Sta. 0+00.0 Const. Sta. M.H. Type "A" Install 4" stub West.

Sta. 1+99.0 Const. Sta. M.H. Type "A" Install 4" stub West.

Sta. 4+00.0 Const. Sta. M.H. Type "A" Install 4" stub West.

Sta. 6+64.0 Const. Sta. M.H. Type "A" Install 4" stub West.

N. rim M.H. 133.40

122.42 Fl. in 8" stub N.

122.68

123.33 Fl. in 8" stub N.

123.02

123.22 Fl. in 8" stub N.

123.42

123.63

123.75 Fl. in 8" stub West.

123.85

124.00 Fl. in 8" stub West.

124.50 Fl. cut

20 lin. ft. of Sand fill or flushing

654 lin. ft. of 8" V.C.P. @ 0.2% grade

74.5 lin. ft. of 8" V.C.P. @ 0.4% grade

LAT. 44, SUBMAIN 4, S. S. NO. 23  
PROJECT NO. C25-14  
SHEET NO. 2 OF 2