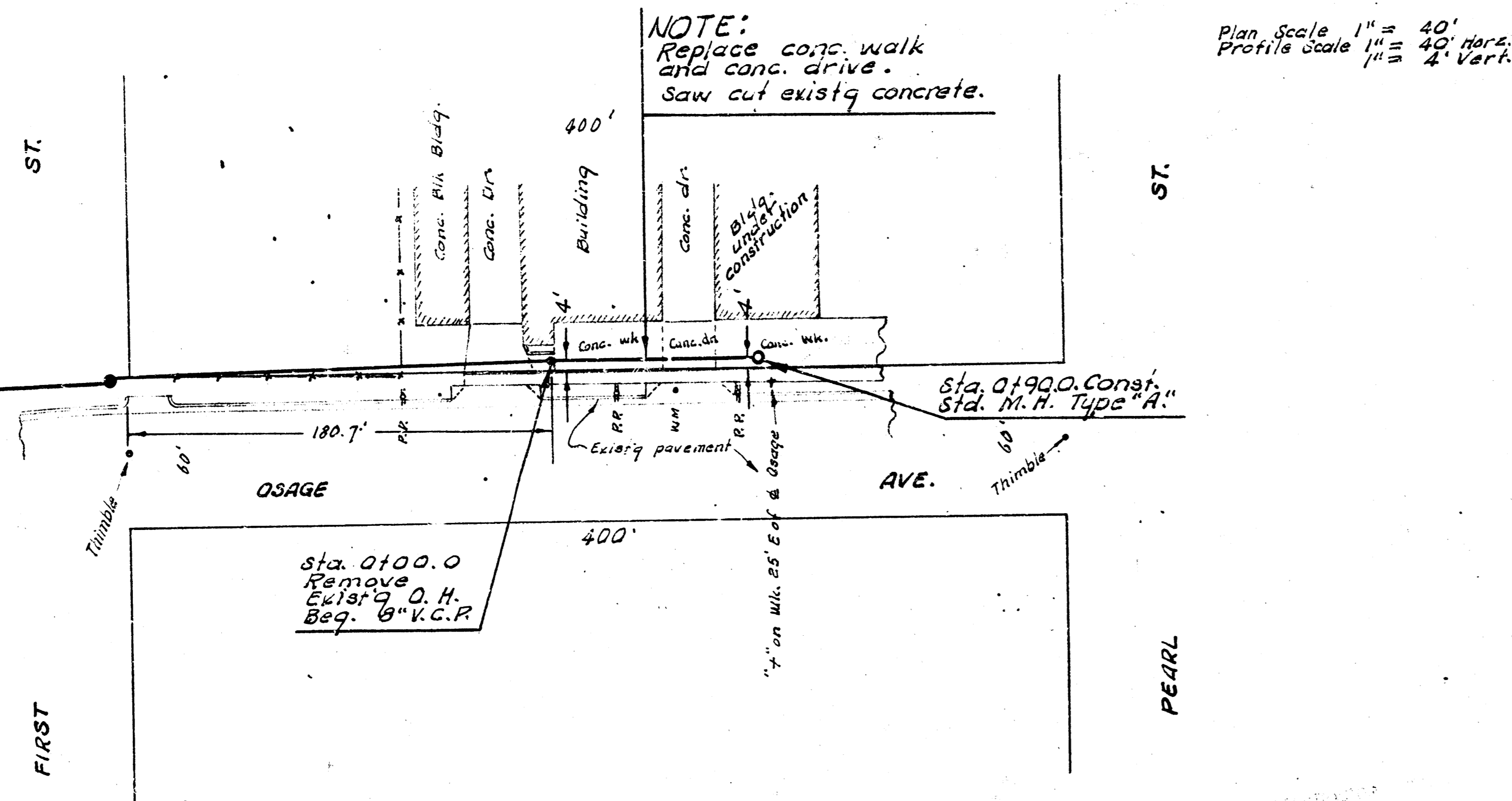
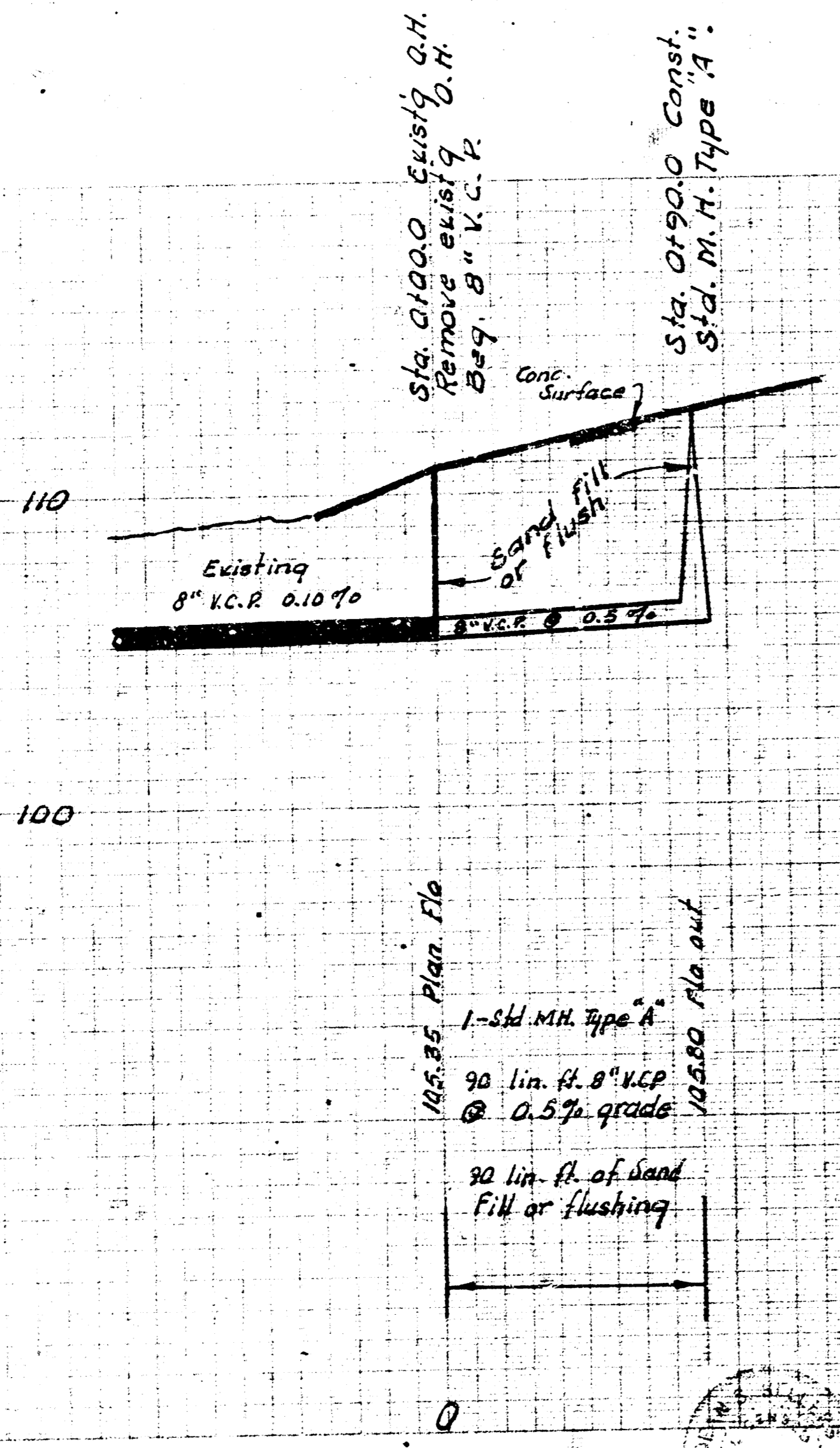


T. B. M. 107.95 S. Rim Existing M.H. @ EL. Osage & S. First St. west.

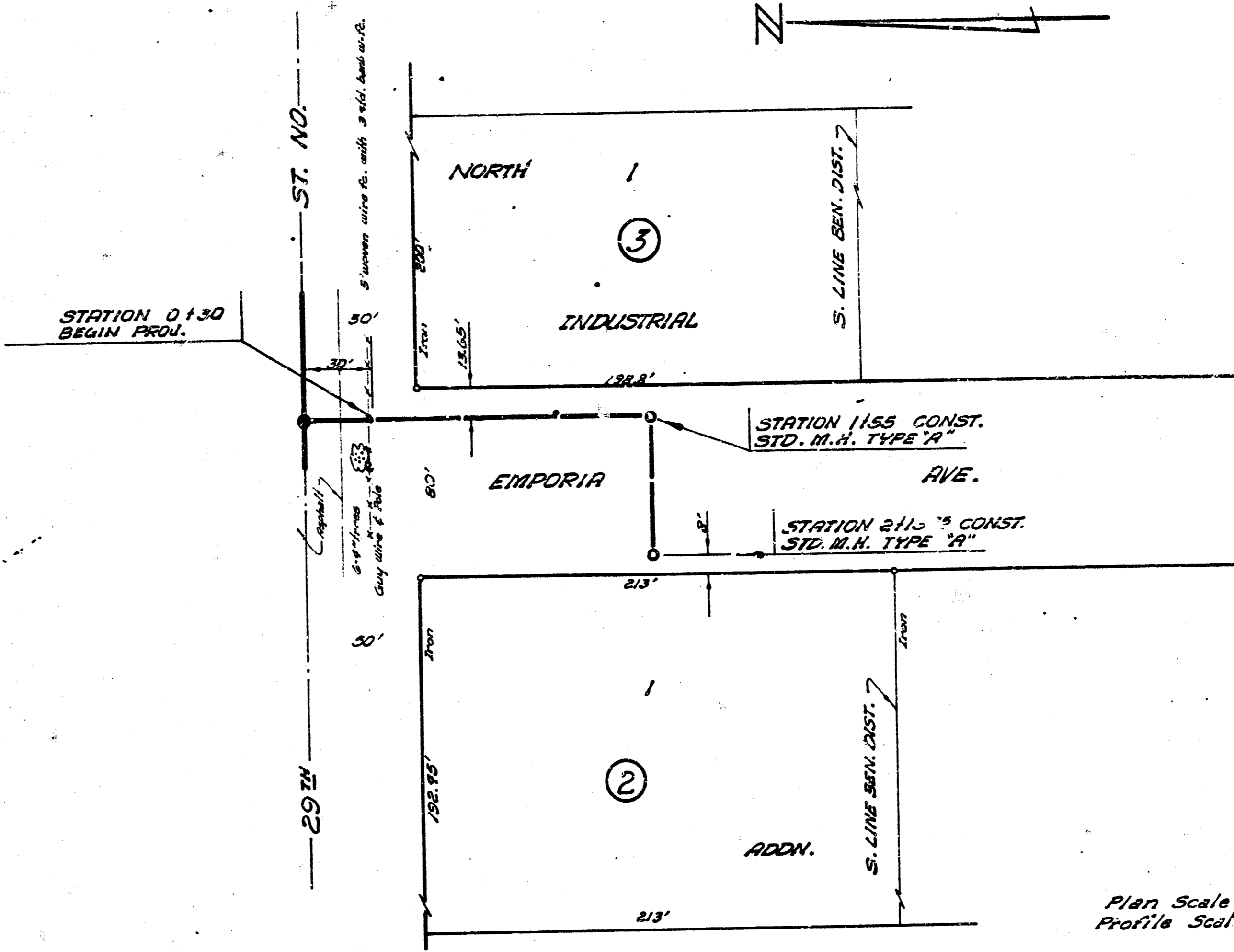


Survey by J.F.S. Plan by J.F.S. Checked by

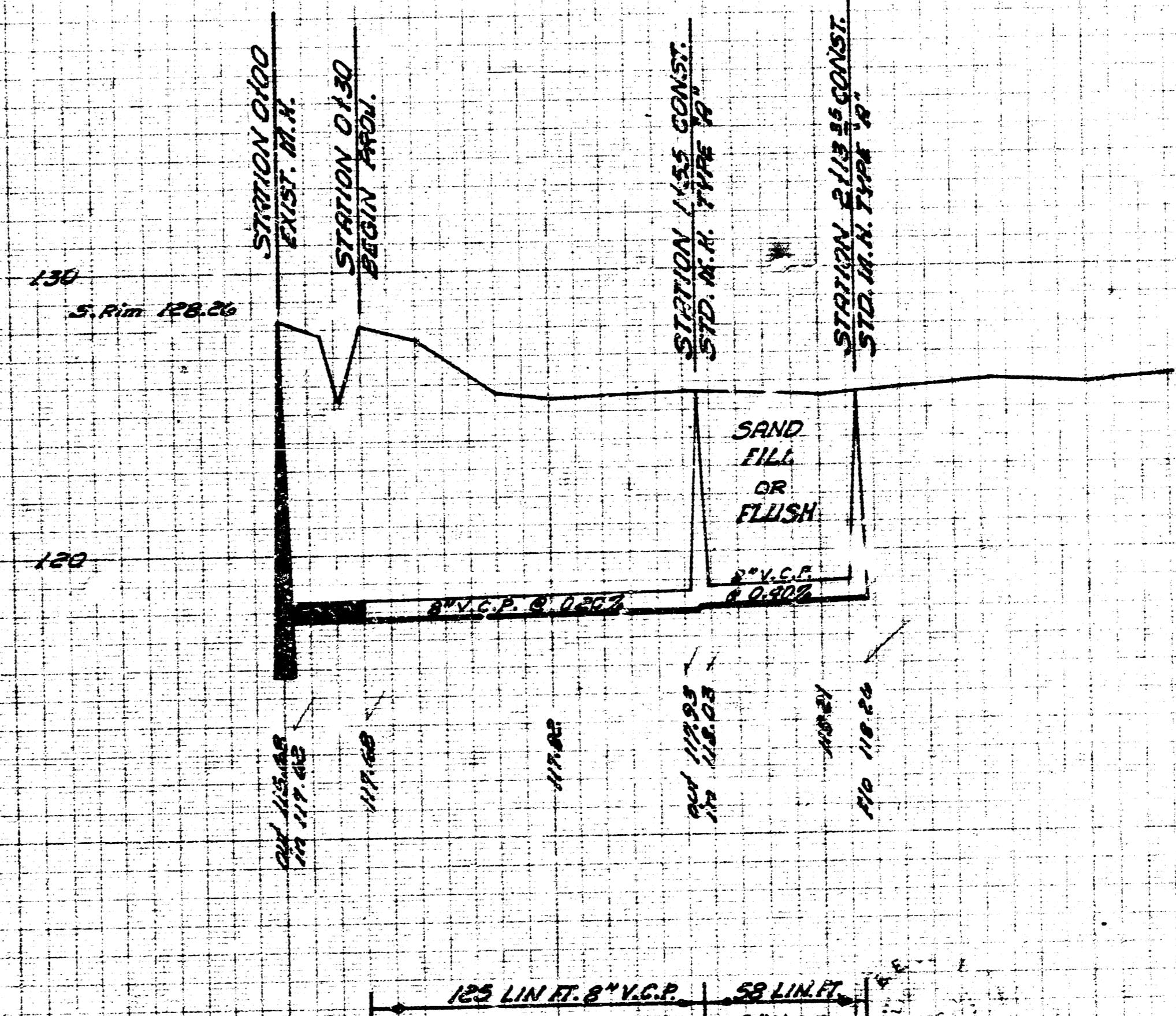


EXTENSION TO
SUBMAIN, S. S. DIST. NO. 21
CITY OF WICHITA, KANSAS
B. E. SMITH CITY ENGINEER
NOV. 1965 PRIVATE CONTRACT

Survey by J.F.S. Plan by J.F.S. Checked by



B.M. 128.20 Step B.M. S. Side E. Pole of N. Frame N.S. 29th Front of Quality Castings



LAT. 51, SUB. 4, S. S. #23
CITY OF WICHITA, KANSAS
B. E. SMITH, CITY ENGINEER
PROJ. NO. C25-23
DATE: MAR. 1966