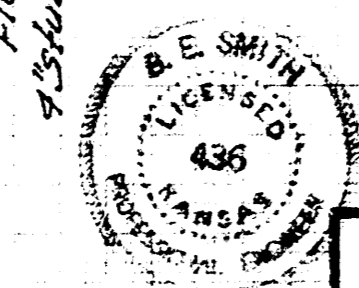
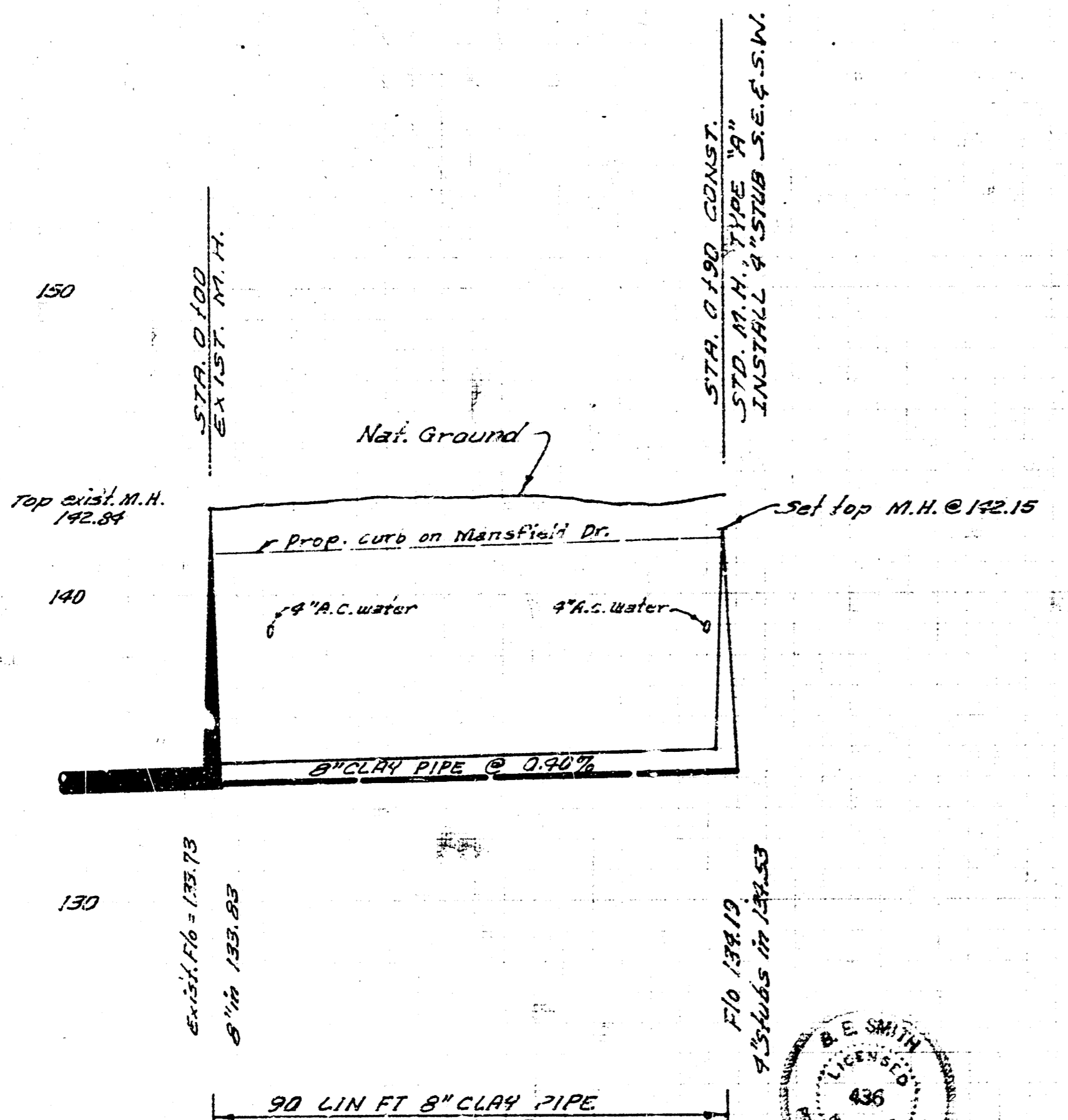
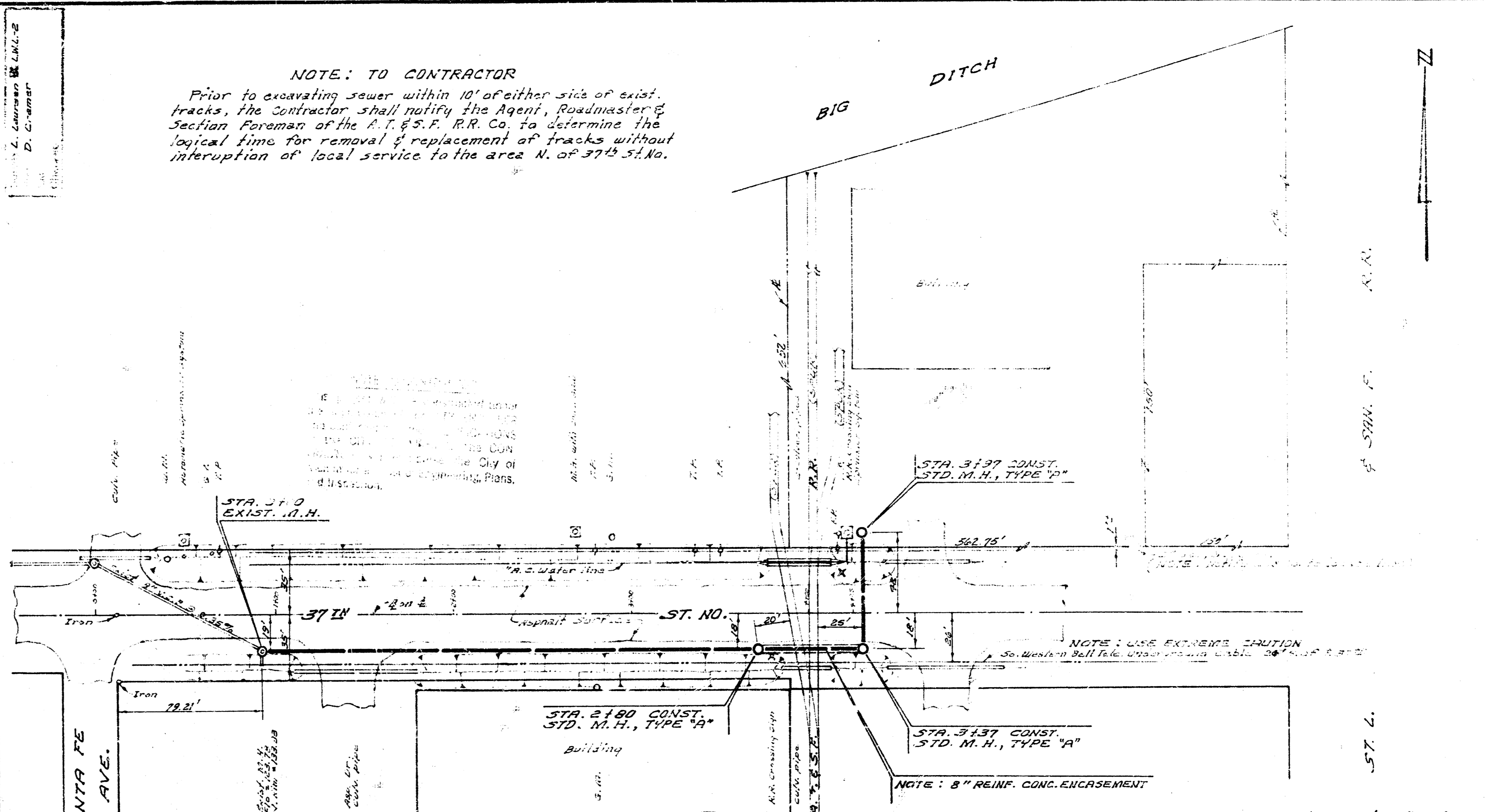


B.M. 140.30 "1" for curb N.L. Rose & E.L. Mansfield
 B.M. 145.97 N.W. cor. conc. po. Ho. # 8349 Rose Lane

Plan Scale 1"=20'
 Profile Scale 1"=4' Vert.

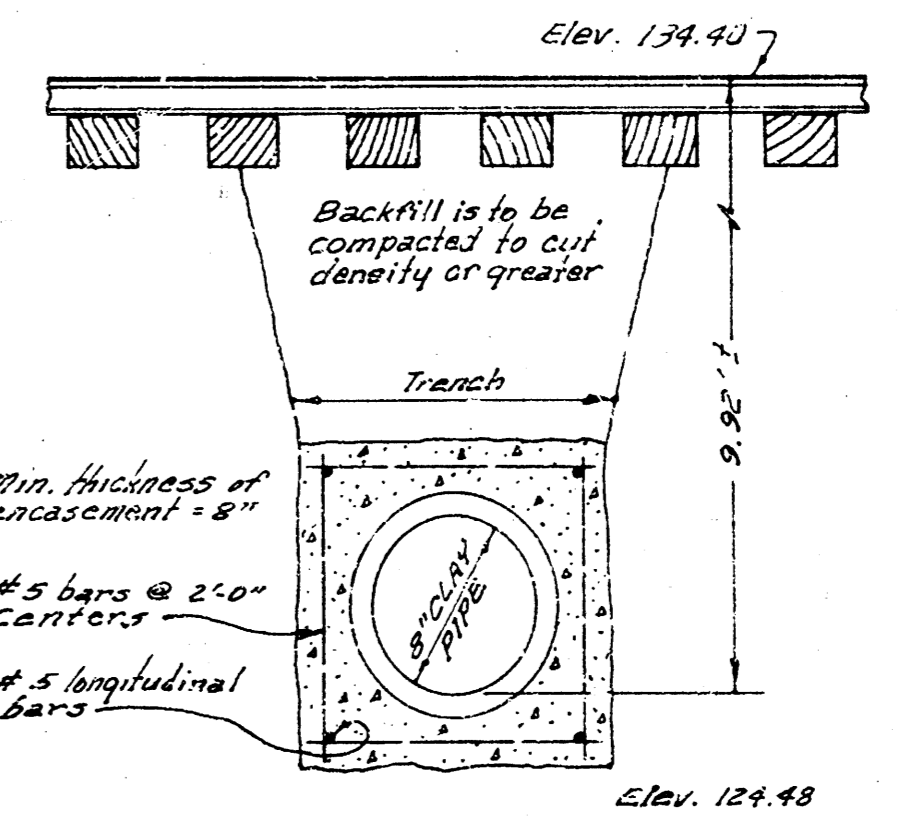
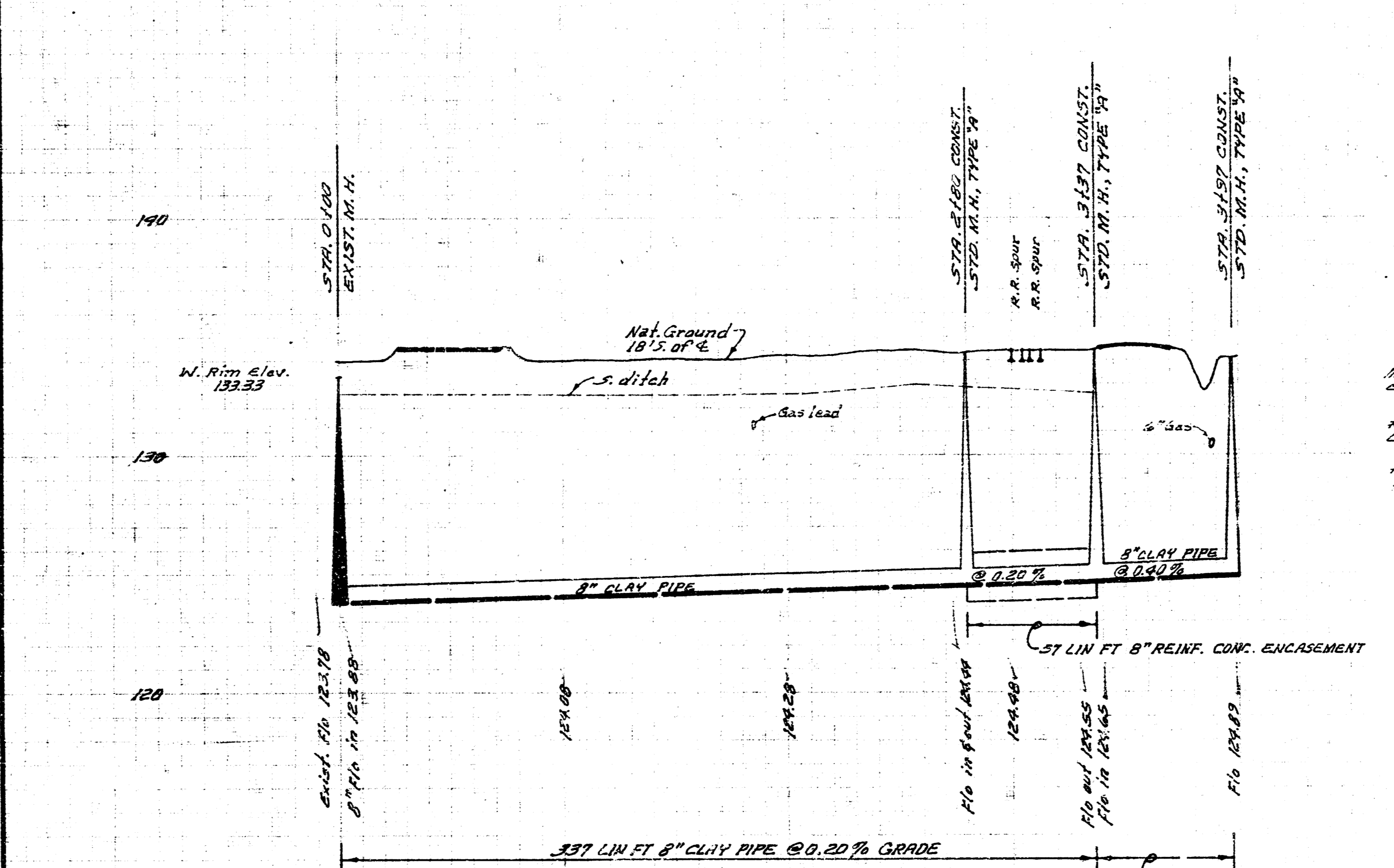


LATERAL 45, W. I. S.
 CITY OF WICHITA, KANS.
 B.E. SMITH, CITY ENGINEER
 PROJ. NO. C29-93
 DATE: DEC. 1969



B.M. 134.35 S.W. cor. 1st conc. step (w.steps) office entrance to International Harvester.

Plan Scale 1"=20'
 Profile Scale 1"=4' Vert.



TYPICAL SECTION
 REINF. CONC. ENCASUREMENT
 STA. 2+180 to 3+137
 No. Scale

EXTENSION OF
 LAT. 63, SUB. 9, S.S. NO. 23
 CITY OF WICHITA, KANSAS
 B.E. SMITH, CITY ENGINEER
 PRIVATE PROJECT
 DATE: Dec. 1969

NOTE: TO CONTRACTOR
 Prior to excavating sewer within 10' of either side of exist. tracks, the Contractor shall notify the Agent, Roadmaster's Section Foreman of the A. & S. F. R.R. Co. to determine the logical time for removal & replacement of tracks without interruption of local service to the area N. of 37th St. No.