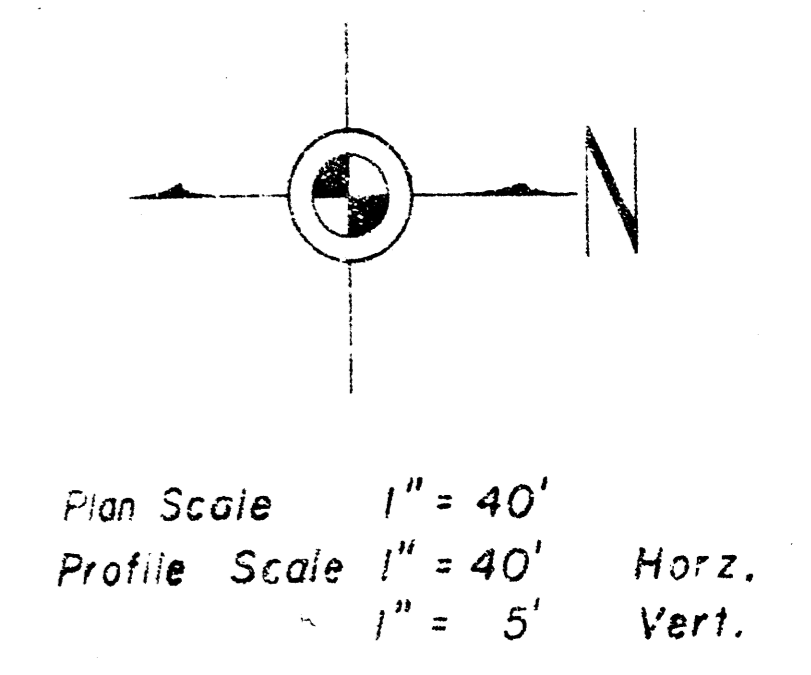
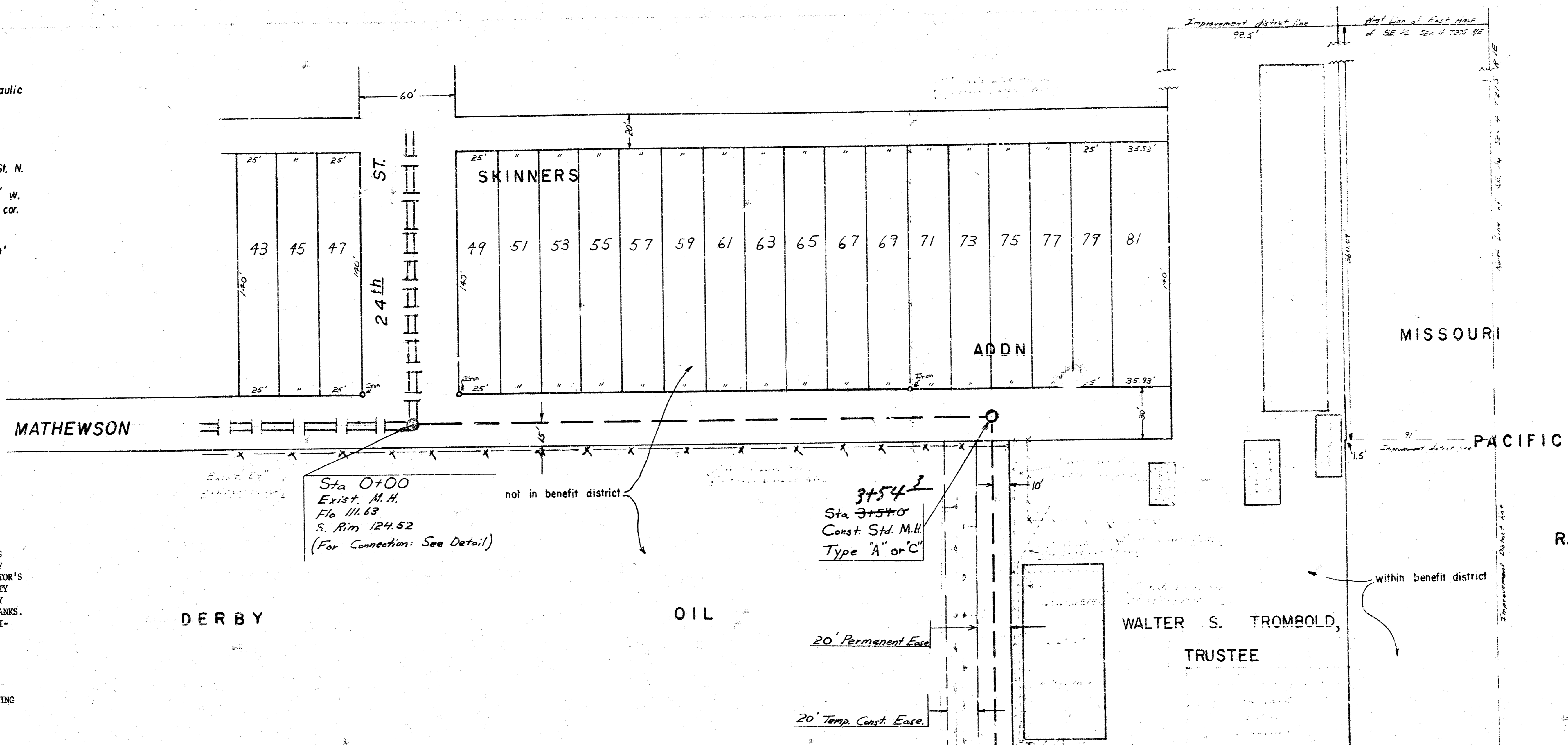
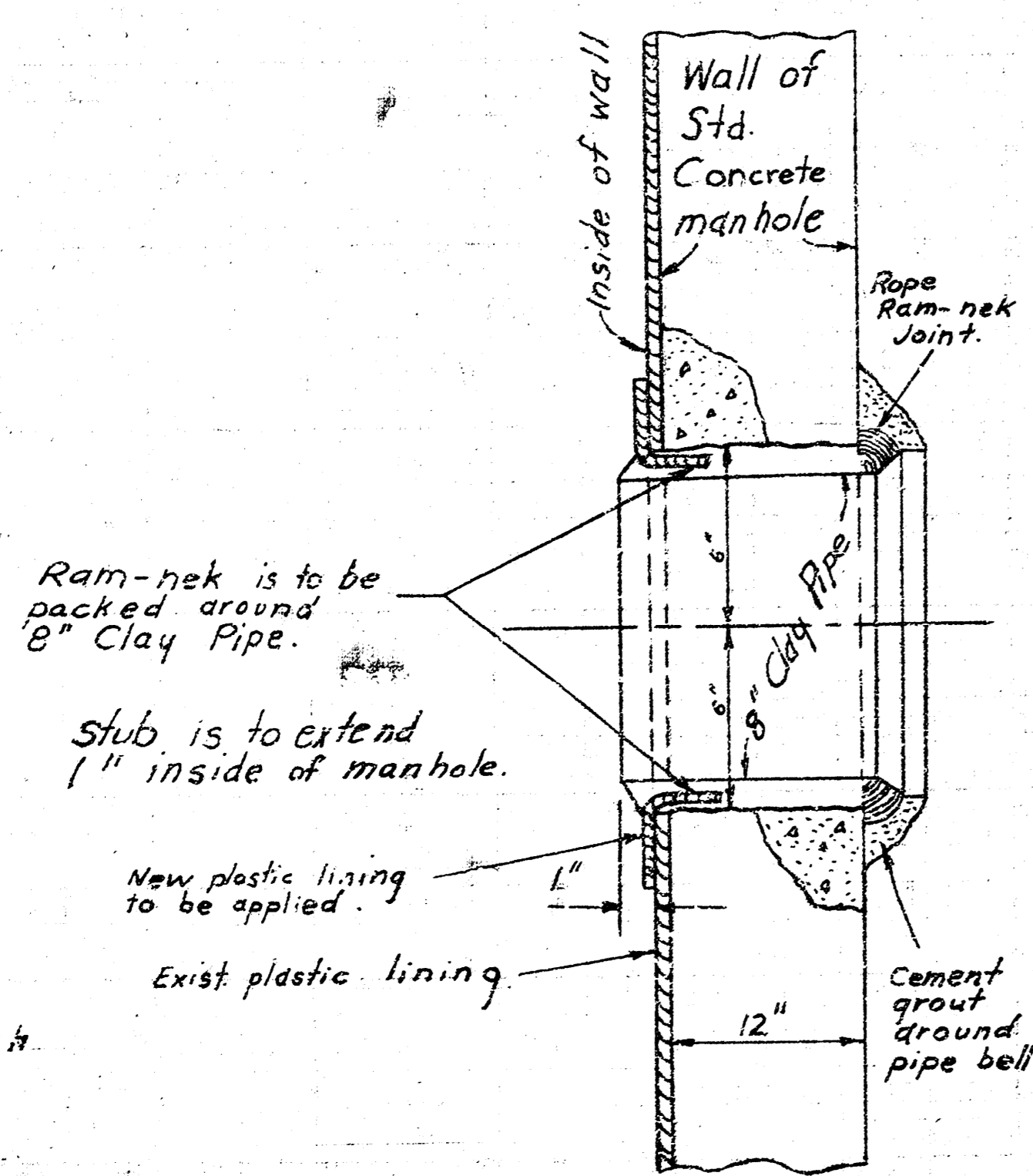


- B.M. 134.74 City Sta. @ Hydraulic # 29th St.
- B.M. 131.55 N. Hub guard W. end bridge Hydraulic goes under I-35 Approx. 25th Hydraulic
- B.M. 128.68 R.R. Spike W. Side P. Pole W. side I-35 at 25 St. N.
- B.M. 124.53 N. Rim of Exist. San. Sewer M.H. in intersection of Mathewson & 24th St. N.
- B.M. 125.91 " cut on SW. cor. conc. wk. approx. 5' W. of SW. cor. plg. 90' North of NW. cor. Derby Oil Property
- B.M. 128.21 R.R. Spike SE Side P. Pole approx. 150' South of 25th St. N.

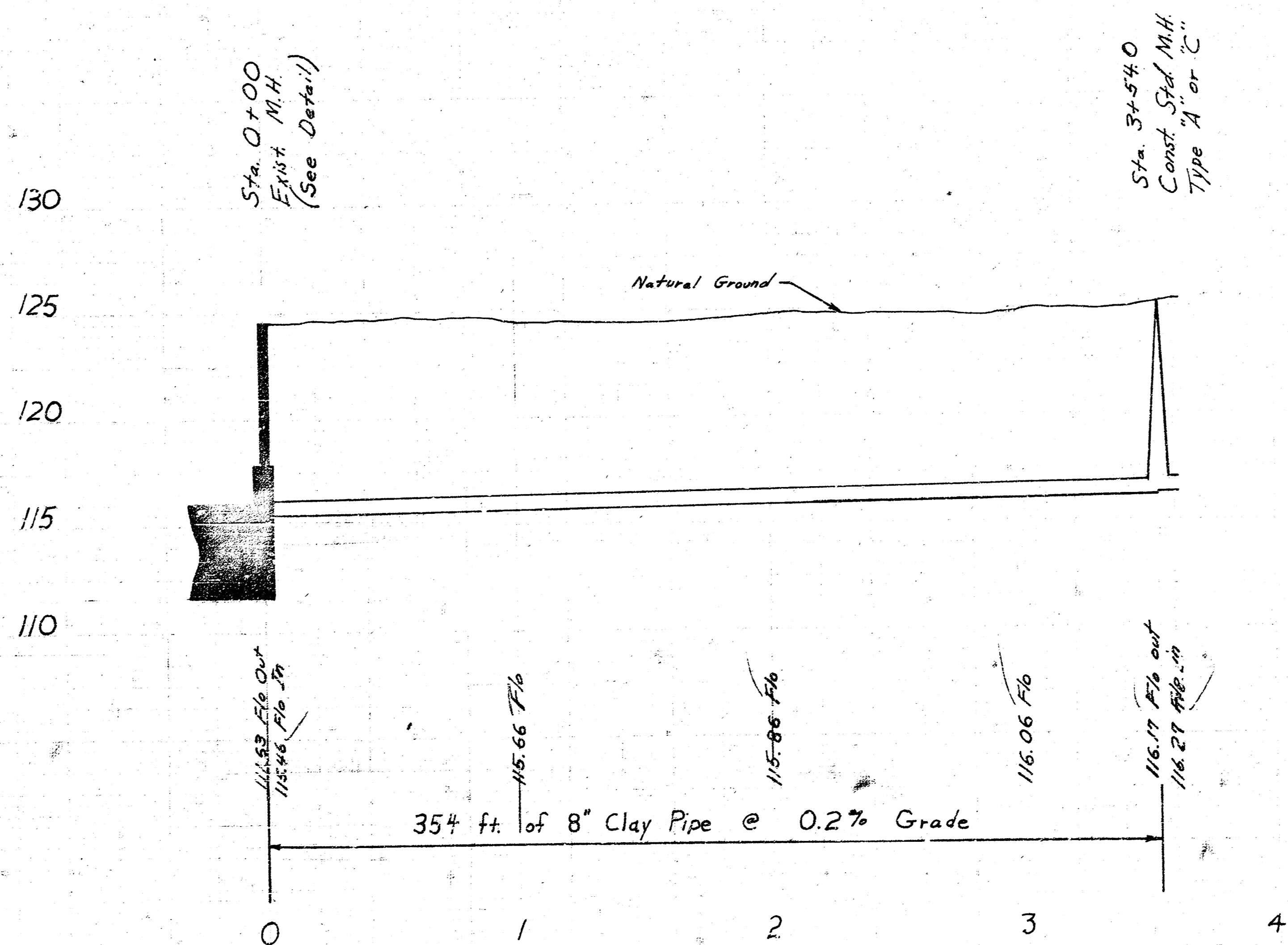


NOTE: CONTRACTOR SHALL NOTIFY DERBY OIL CO., REID SUPPLY, AND MISSOURI PACIFIC RAILROAD COMPANY PRIOR TO STARTING WORK. CONTRACTOR SHALL MAKE ARRANGEMENTS WITH MISSOURI PACIFIC RAILROAD COMPANY FOR REMOVAL OF TRACKS TO FACILITATE CONSTRUCTION OF SEWER. CONTRACTOR'S CONSTRUCTION METHODS ACROSS DERBY OIL COMPANY PROPERTY MUST BE SUCH THAT WILL ASSURE CONTINUED PROTECTION BY THE DIKE SYSTEM AROUND DERBY OIL COMPANIES STORAGE TANKS. ANY ALTERATION, TEMPORARY RELOCATION, OR OTHER MODIFICATION OF THE PROTECTIVE DIKE SYSTEM TO FACILITATE CONSTRUCTION OF THE SEWER MUST BE APPROVED BY THE APPROPRIATE OFFICIAL OF THE DERBY OIL COMPANY.

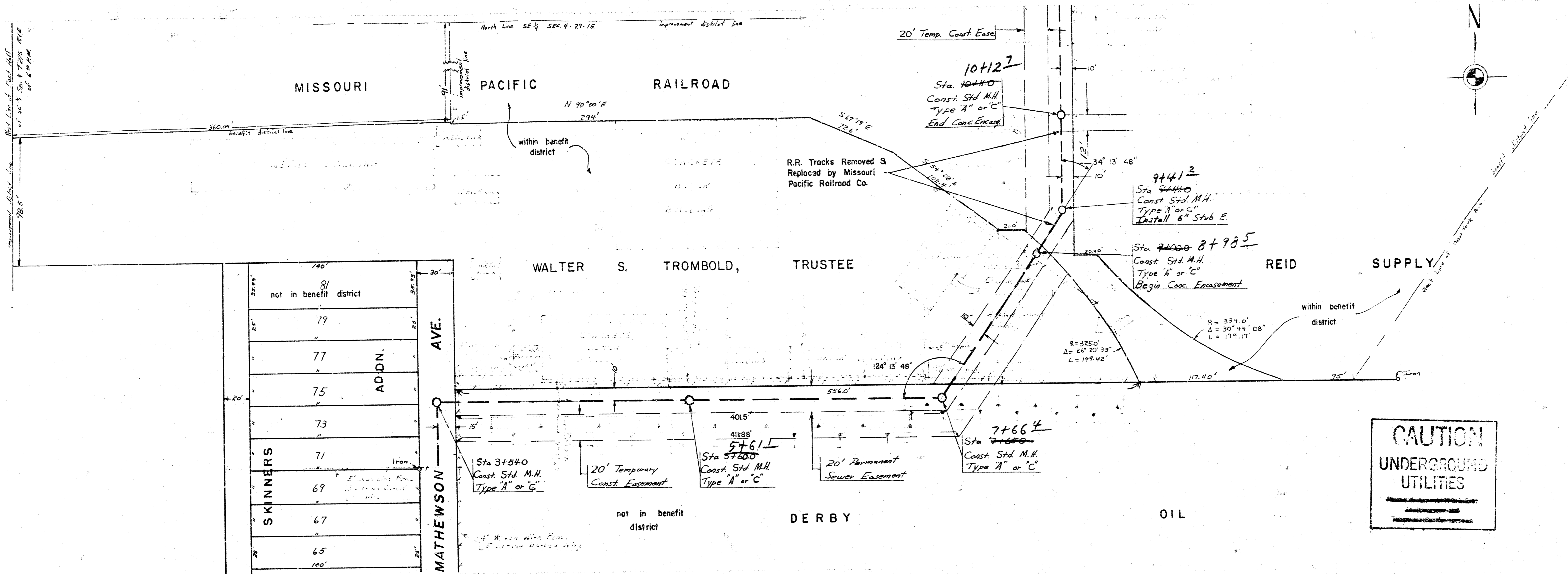
NO DIRECT PAYMENT WILL BE MADE FOR ALTERING, RELOCATING OR MODIFYING PROTECTIVE DIKE SYSTEM AND THIS WORK SHALL BE CONSIDERED AS SUBSIDIARY TO THE OTHER ITEMS OF WORK.



Detail for Installation of 8" Stub into Reinf. Conc. M.H.



LAT. 86 MAIN 4 S.S. NO. 23
 CITY OF WICHITA, KANSAS
 R. W. LINN — CITY ENGINEER
 PROJECT NO. DBKL575037 DATE: 1/3



CAUTION
UNDERGROUND
UTILITIES

140'	81	not in benefit district
24'	79	
24'	77	
24'	75	ADJDN.
24'	73	
24'	71	SKINERS
24'	69	
24'	67	
24'	65	
140'	63	

Sta. 3+540 Const. Std. M.H. Type "A" or "C"

Sta. 5+600 Const. Std. M.H. Type "A" or "C"

Sta. 5+611 Const. Std. M.H. Type "A" or "C"

Sta. 7+650 Const. Std. M.H. Type "A" or "C"

Sta. 7+664 Const. Std. M.H. Type "A" or "C"

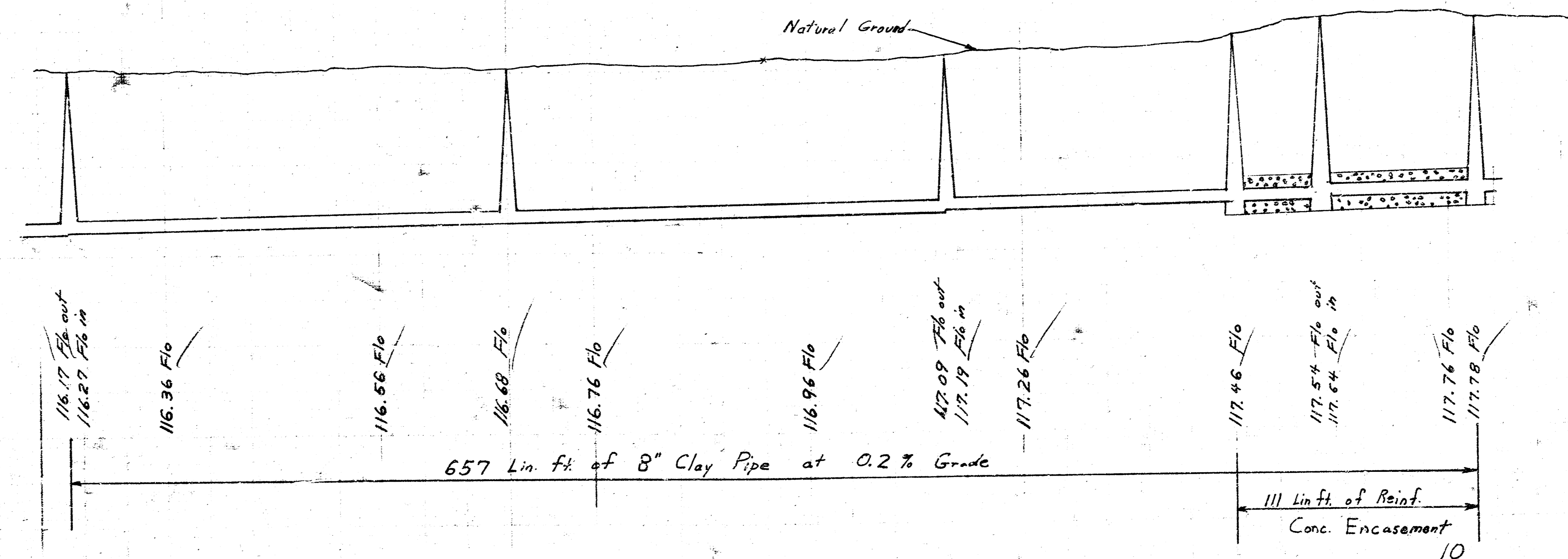
Sta. 9+000 Const. Std. M.H. Type "A" or "C" Begin Conc. Encasement

Sta. 9+410 Const. Std. M.H. Type "A" or "C" Install 6" Stub E.

Sta. 10+110 Const. Std. M.H. Type "A" or "C" End Conc. Encasement

130
125
120
115
110

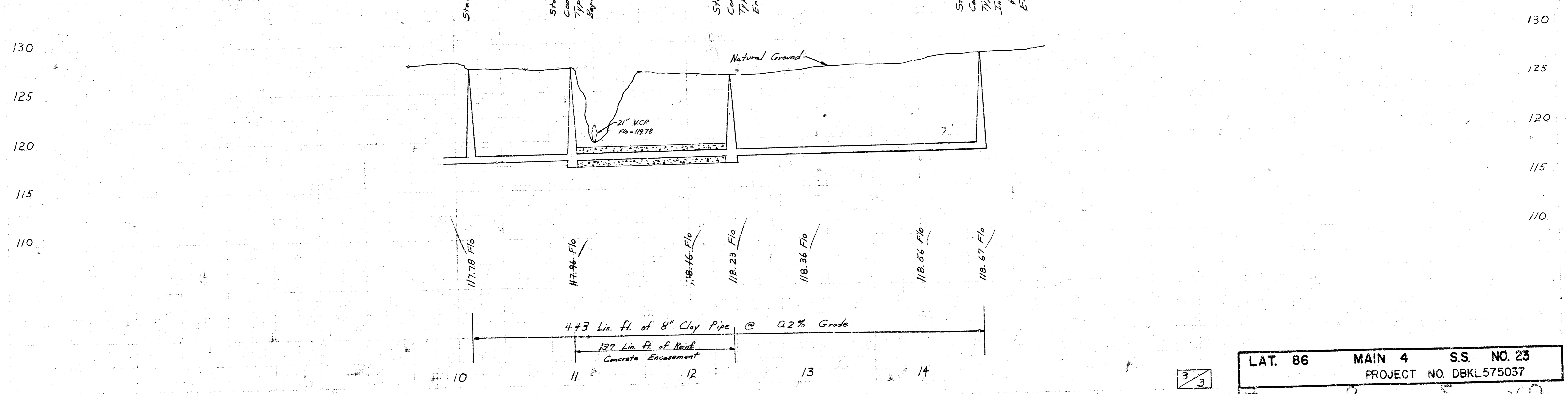
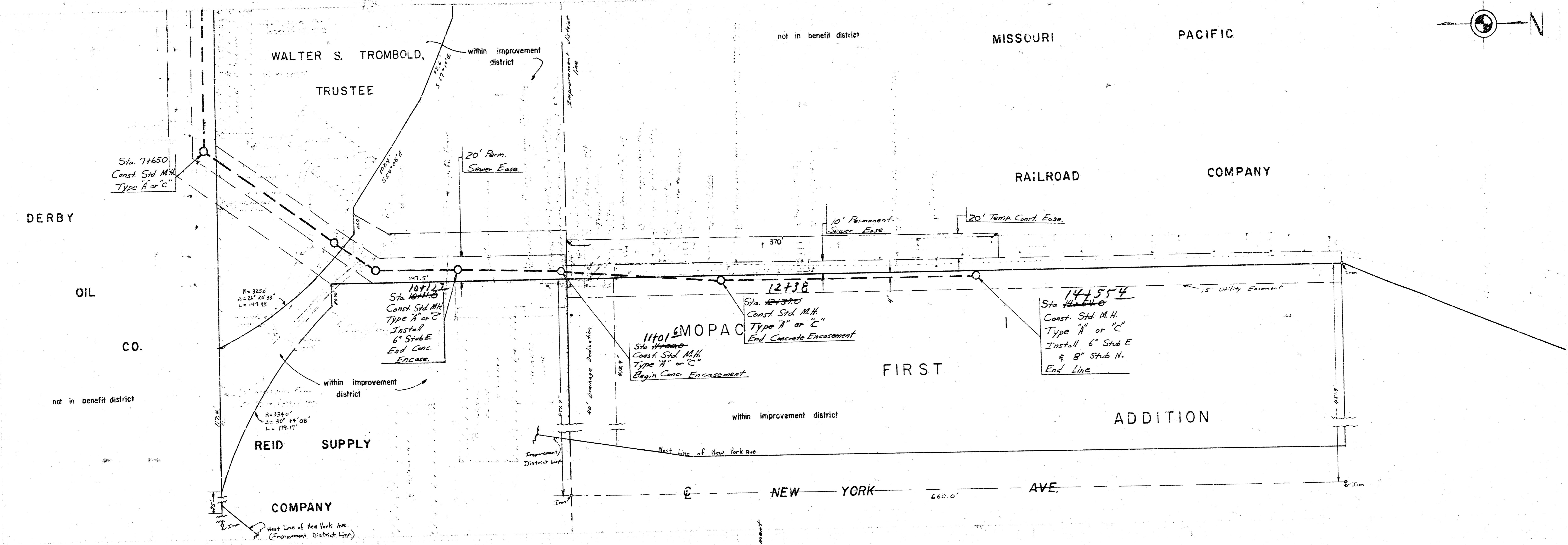
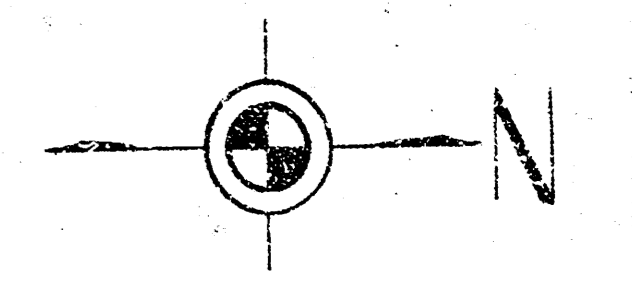
130
125
120
115
110



LAT. 86 MAIN 4 S.S. NO. 23
PROJECT NO. DBKL575037

2/3

2/3



LAT. 86 MAIN 4 S.S. NO. 23
PROJECT NO. DBKL575037

3/3