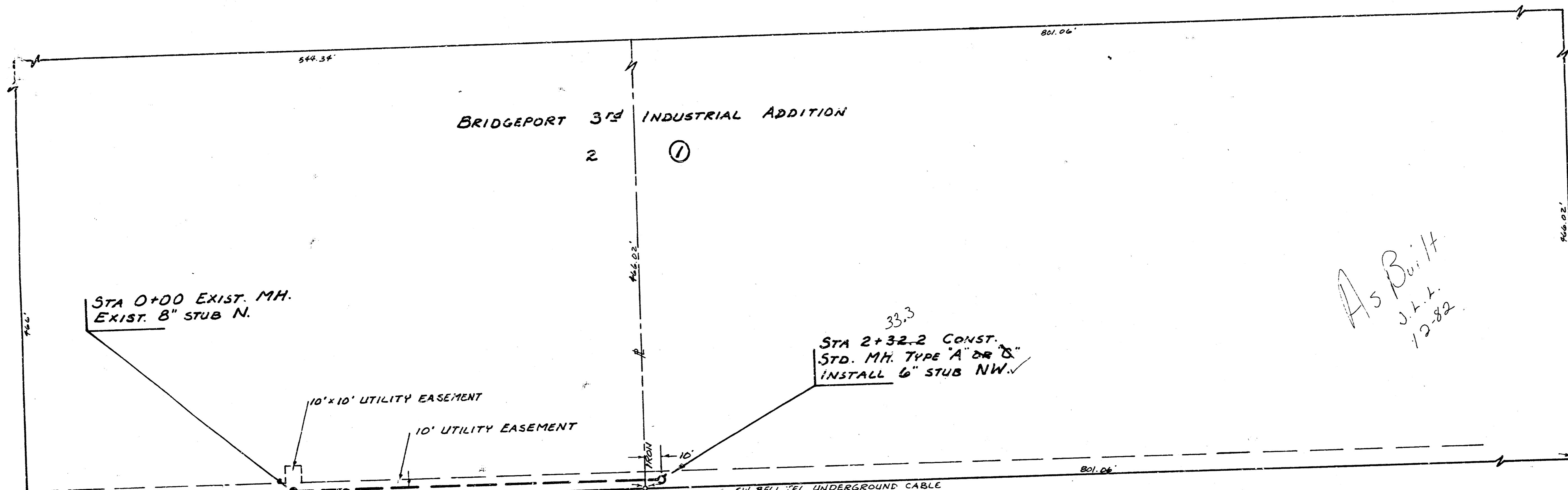


28/2 S14007



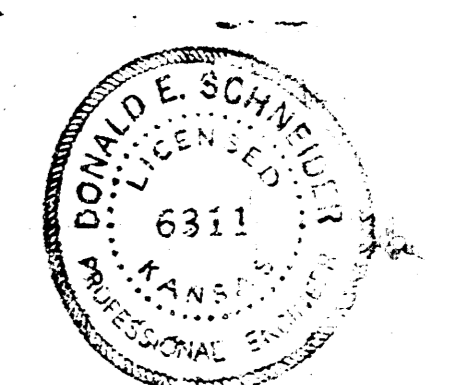
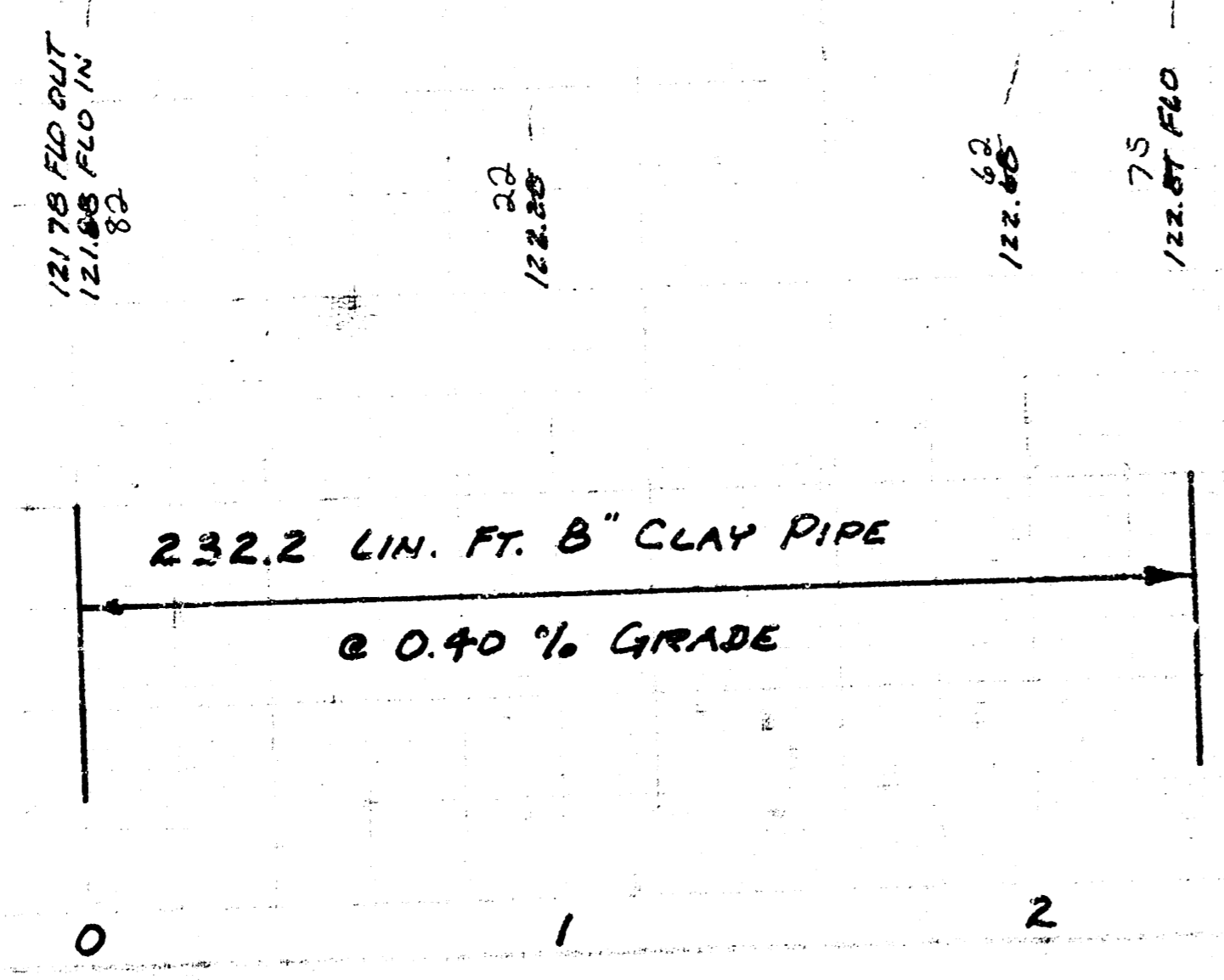
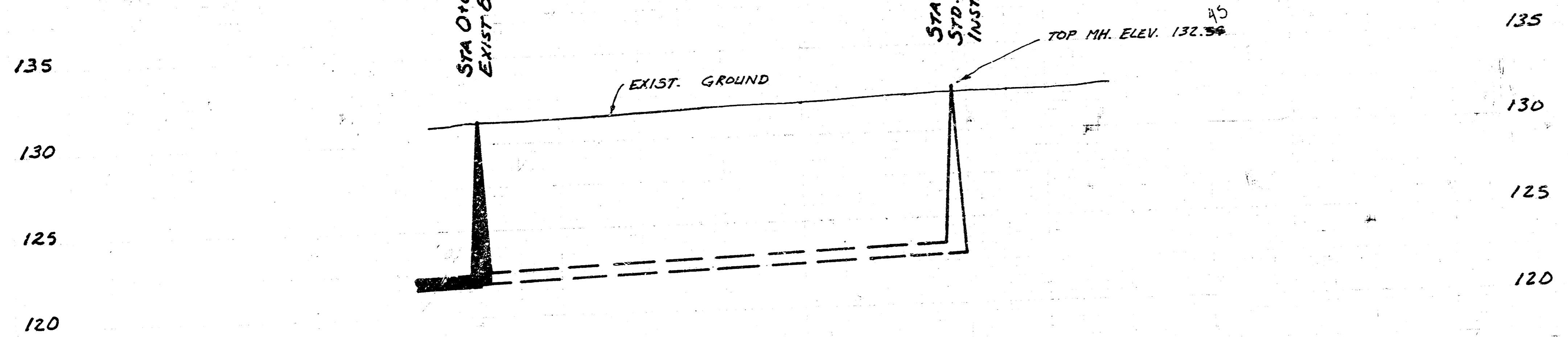
SCALE PLAN 1" = 40'
 PROFILE 1" = 40' HORIZ.
 1" = 5' VERT.

*As Built
 J.H.A.
 12-82*

B.M. 129.765 City Std. Disc. 32' W. & 28' N.
 of 1/4 Sec. Cor. at Washington and
 33rd St. No.

B.M. 135.927 City Std. Disc. 36' E. & 33' N.
 of 1/4 Sec. Cor. at Washington and
 37th St. No.

THE CONTRACTOR SHALL BE RESPONSIBLE FOR PRESERVING PROPERTY IRONS. THE CONTRACTOR SHALL BE REQUIRED TO RE-ESTABLISH ANY PROPERTY IRONS WHICH ARE DAMAGED OR DESTROYED BY HIS CONSTRUCTION OPERATIONS. SUCH IRONS SHALL BE RE-ESTABLISHED BY A LICENSED LAND SURVEYOR OR A LICENSED PROFESSIONAL ENGINEER IN ACCORDANCE WITH STATE LAWS.



EXTENSION OF LAT. 102, MAIN 4, SANITARY SEWER #23
 CITY OF WICHITA, KANSAS
 R. W. BRUGGEMAN : DIRECTOR OF ENGINEERING / CITY ENGINEER
 PROJ. NO. 468-76-245-81185-000-000-901

10 8 1 14 1/2

FILMED FROM THE BEST