

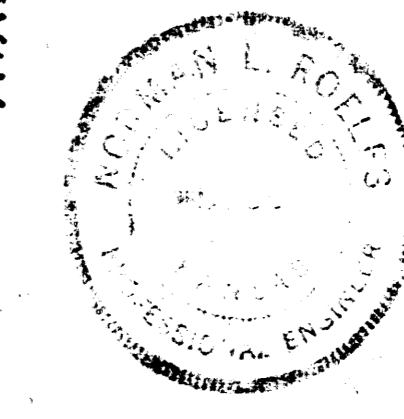
**GENERAL NOTES**

1. Removal and replacement of any or all entrance pipes shall be incidental to the project.
2. The contractor shall be responsible for preserving property irons. The contractor shall be required to re-establish any property irons which are damaged or destroyed by his construction operations. Such irons shall be re-established by a Registered Land Surveyor or a Licensed Professional Engineer in accordance with state laws.
3. Notify the following companies prior to any trenching.
 

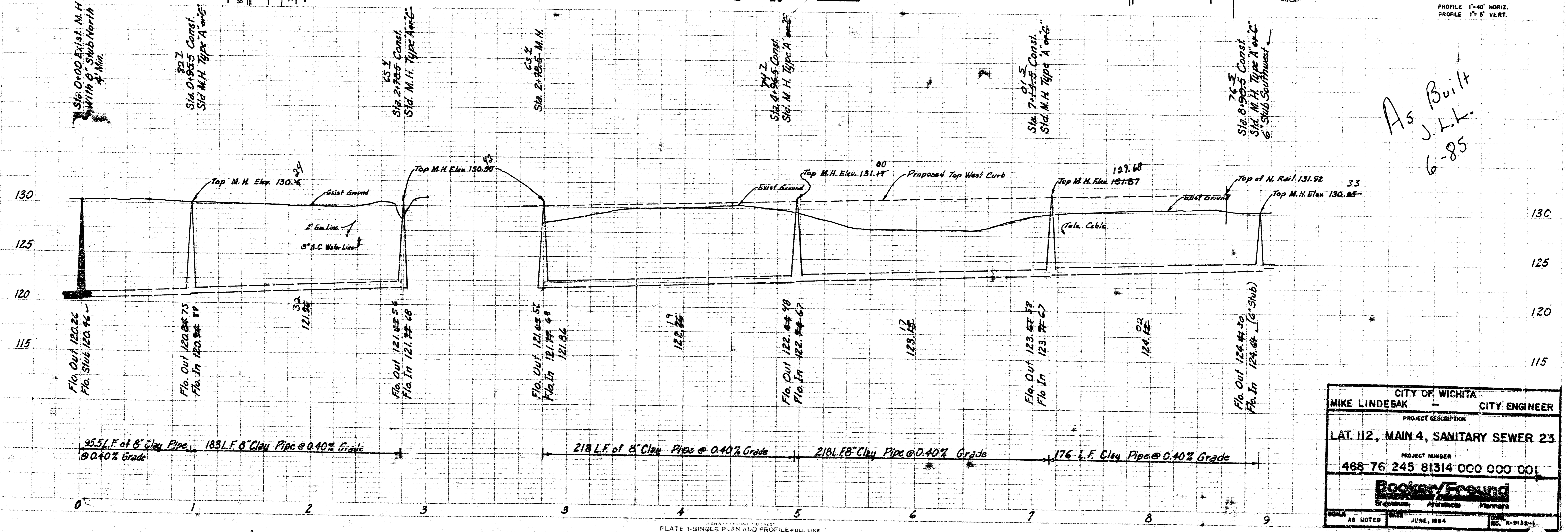
|                           |          |
|---------------------------|----------|
| ARKLA Gas Co.             | 942-8350 |
| Bell Telephone Co.        | 268-3078 |
| Cablevision               | 266-6817 |
| Gas Service Co.           | 263-7511 |
| Kansas Gas & Electric Co. | 261-6248 |
| Derby Refining Co.        | 267-0361 |
| Kan-U-Dig-It              | 267-2889 |

- B.M. 130.98 R.R. Spike in Power Pole 150' North of 33rd St. N. & Topeka
- B.M. 130.86 60d Step in Power Pole 30' W. 35th St. N. & Topeka
- B.M. 132.51 R.R. Spike in Power Pole 100' N. & 130' E. 34th St. & Topeka
- B.M. 130.45 60d Step in Power Pole SW Corner of 34th & Emporia

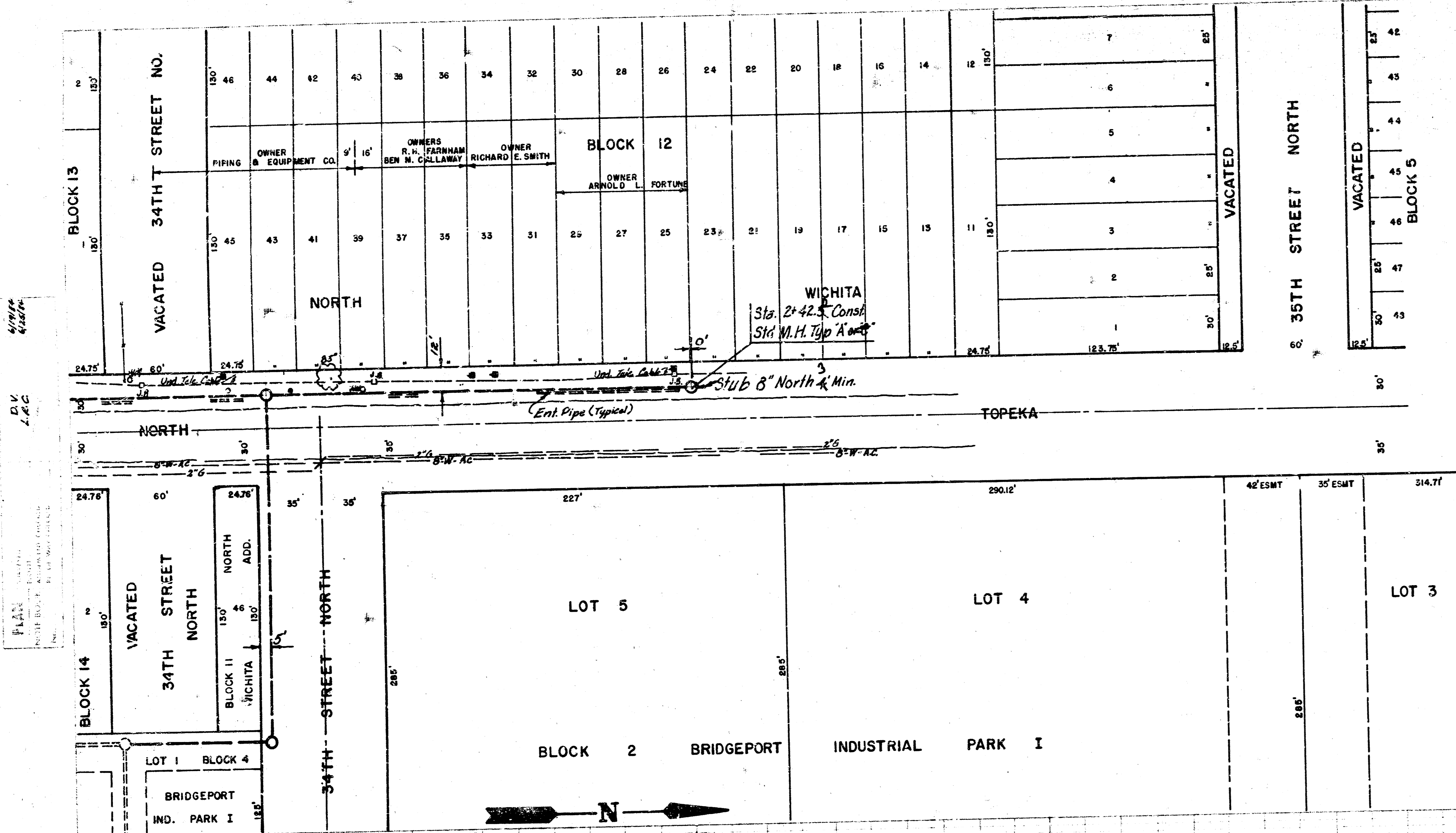
SCALE  
 PLAN 1"=40'  
 PROFILE 1"=40' HORIZ.  
 PROFILE 1"=5' VERT.



*As Built*  
 J.L.L.  
 6-85



|                                     |               |
|-------------------------------------|---------------|
| CITY OF WICHITA                     |               |
| MIKE LINDEBAK                       | CITY ENGINEER |
| PROJECT DESCRIPTION                 |               |
| LAT. 112, MAIN 4, SANITARY SEWER 23 |               |
| PROJECT NUMBER                      |               |
| 468 76 245 81314 000 000 001        |               |
| Booker/Freund                       |               |
| Engineers, Architects, Planners     |               |
| AS NOTED                            | JUNE, 1984    |



|                           |            |
|---------------------------|------------|
| 26                        | 25         |
| 28                        | BLOCK 27   |
| 30                        | 29         |
| 32                        | 12 31      |
| 34                        | 33         |
| 36                        | NORTH 35   |
| 38                        | 37         |
| 40                        | 39         |
| 42                        | WICHITA 41 |
| 44                        | 43         |
| 46                        | ADD. 45    |
| VACATED 34th STREET NORTH |            |
| 2                         | 1          |
| 4                         | 3          |
| 6                         | BLOCK 5    |
| 8                         | 7          |
| 10                        | 9          |
| 12                        | 13 11      |
| 14                        | 15         |
| 16                        | 17         |
| 18                        | NORTH 19   |
| 20                        | 21         |
| 22                        | 23         |
| 24                        | WICHITA 25 |
| 26                        | 27         |
| 28                        | 29         |
| 30                        | 31         |
| 32                        | 33         |
| 34                        | 35         |
| 36                        | 37         |

BENEFIT DISTRICT MAP  
Scale 1" = 100'

- B.M. 130.98 R.R. Spike in Power Pole 150' North of 33rd St. N. & Topeka
- B.M. 130.86 60d Step in Power Pole 30' W of 35th St. N. & Topeka
- B.M. 132.31 R.R. Spike in Power Pole 100' N. & 130'E. 34th St. N. & Topeka
- 130.45 60d Step in Power Pole SW Corner of 34th & Emporia

SCALE  
PLAN 1" = 40'  
PROFILE 1" = 40' HORIZ.  
PROFILE 1" = 5' VERT.

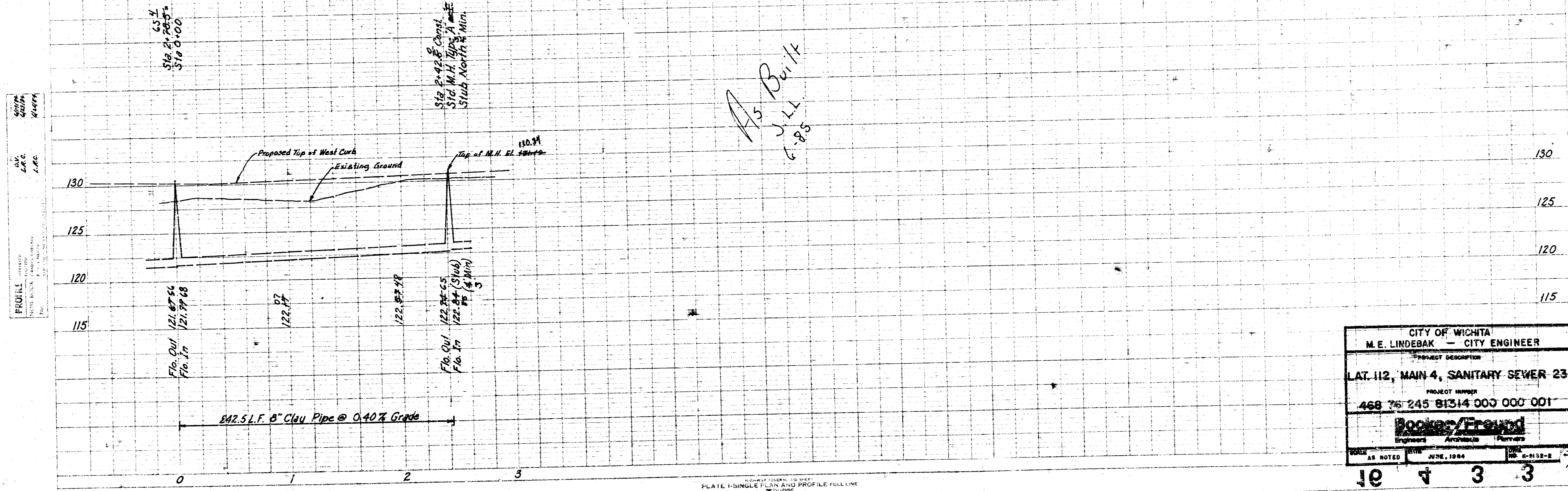


PLATE 1-SINGLE PLAN AND PROFILE FULL LINE  
PRINTED IN U.S.A.

CITY OF WICHITA  
M.E. LINDEBAK - CITY ENGINEER

PROJECT DESCRIPTION  
LAT. 112, MAIN 4, SANITARY SEWER 23

PROJECT NUMBER  
468 76 245 81314 000 000 001

**Boeker/Freund**  
Engineers Architects Planners

DATE AS NOTED DATE JUNE, 1964 DATE 10-1-1964

10 4 3 3