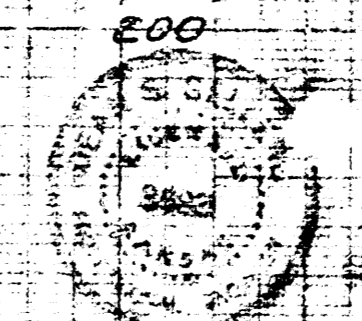
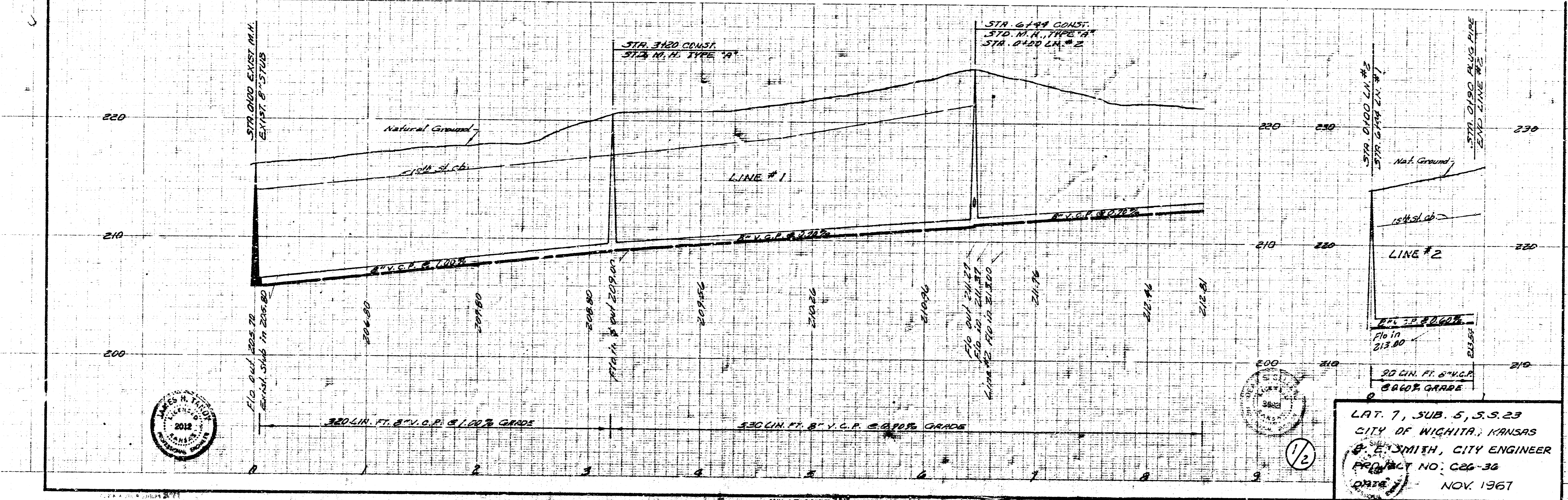


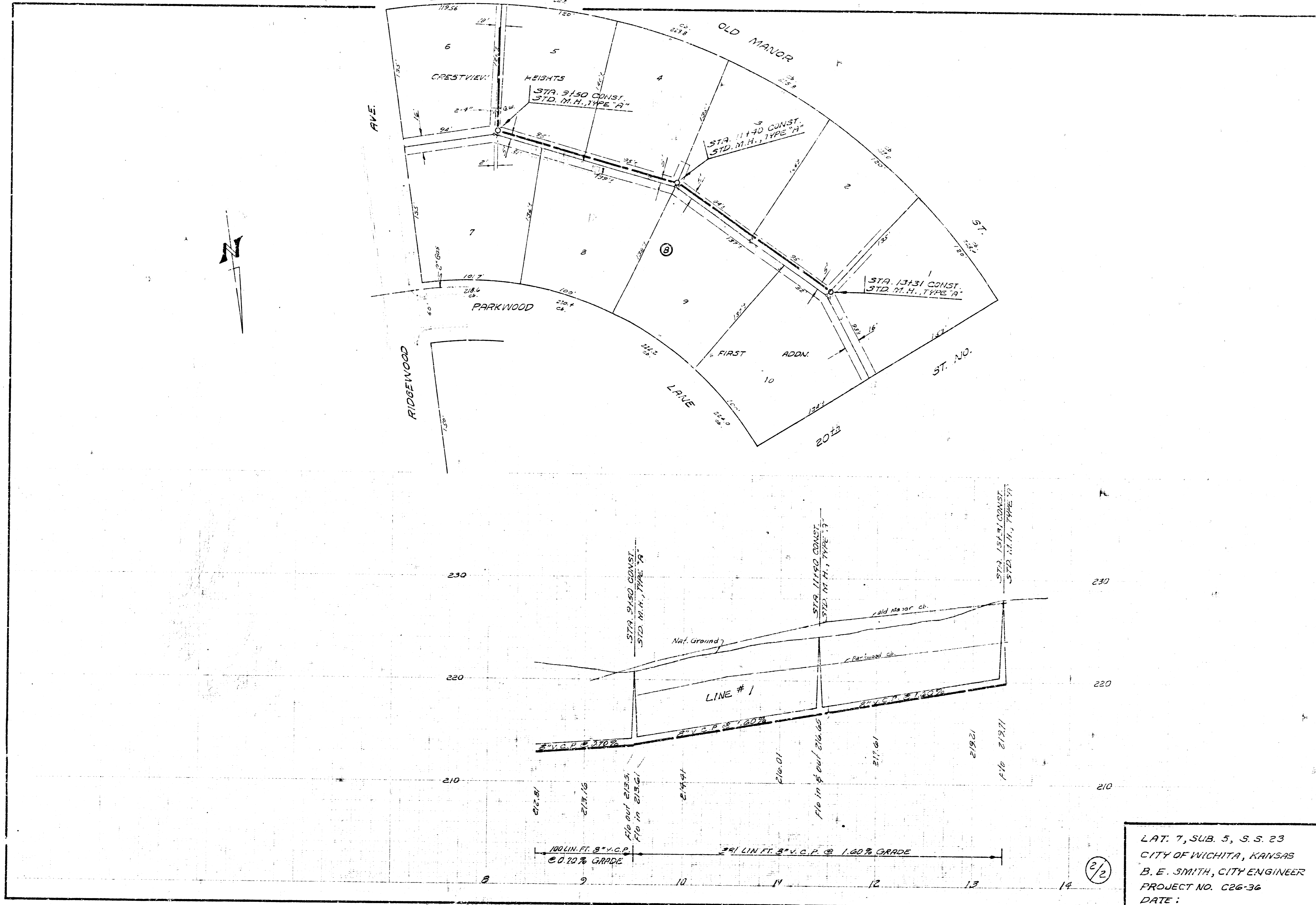
NOTE: TO CONTRACTOR  
 Clearing of R/W shall consist  
 of removing & disposing of all small  
 trees brush & undergrowth.

Plan Scale 1"=40'  
 Profile Scale 1"=40' Hor.  
 1"=4' Vert.

B.M. 219.94 4" Top N. cb. 19th 10' W. of Beaumont  
 B.M. 227.83 60" spike S.S. P.P. N.S. 20' S. 126' W. of Parkwood



LAT. 7, SUB. 5, S.S. 23  
 CITY OF WICHITA, KANSAS  
 E. E. SMITH, CITY ENGINEER  
 PROJECT NO. C26-36  
 DATE NOV. 1967



LAT. 7, SUB. 5, S. 5. 23  
 CITY OF WICHITA, KANSAS  
 B. E. SMITH, CITY ENGINEER  
 PROJECT NO. C26-36  
 DATE:

2/2