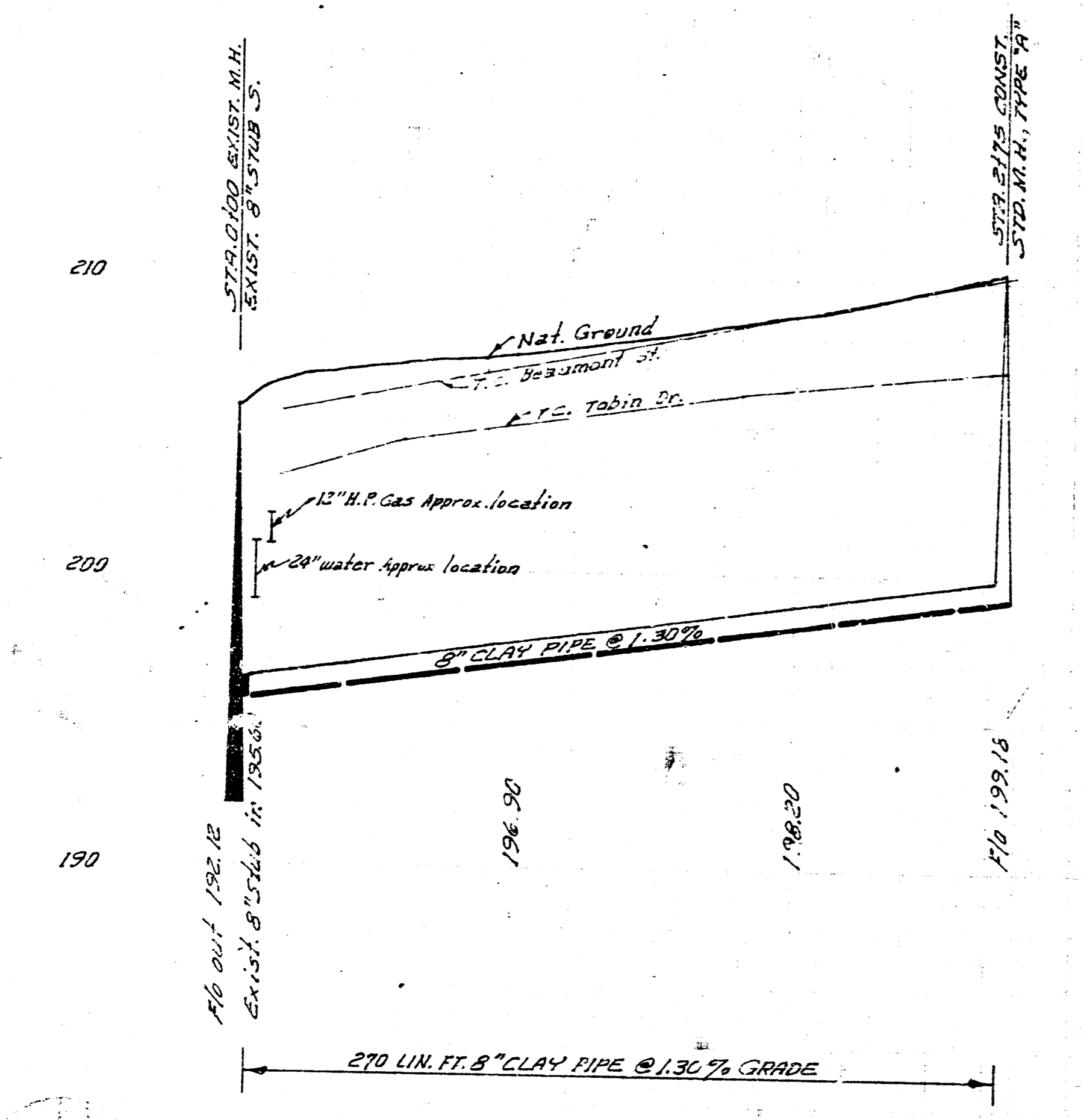
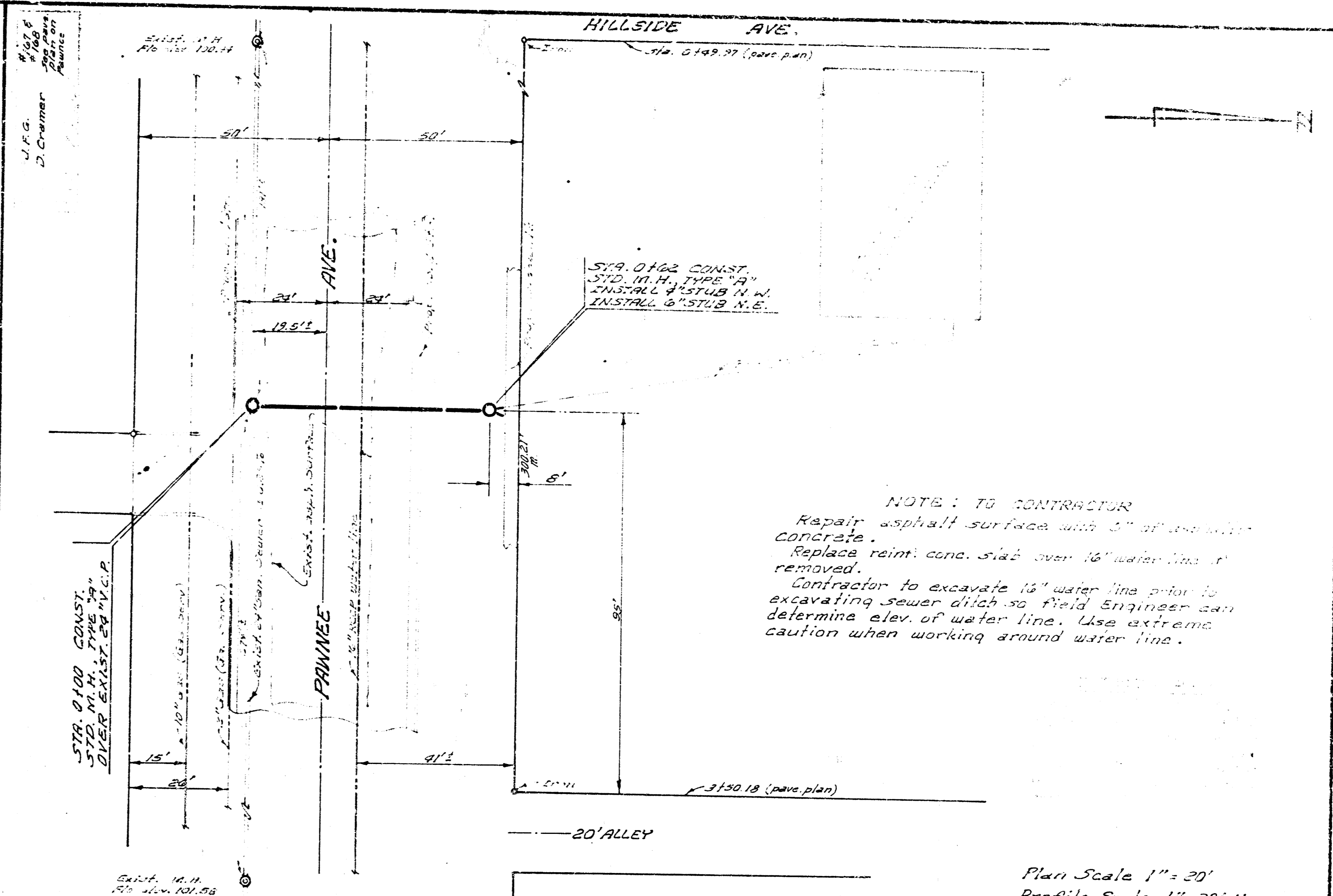


B.M. 219.99 "+4" top of N. curb 19th St. 10' W. of N.L. Beaumont

Plan Scale 1"=40'  
Profile Scale 1"=40' Hor.  
1"=4' Vert.

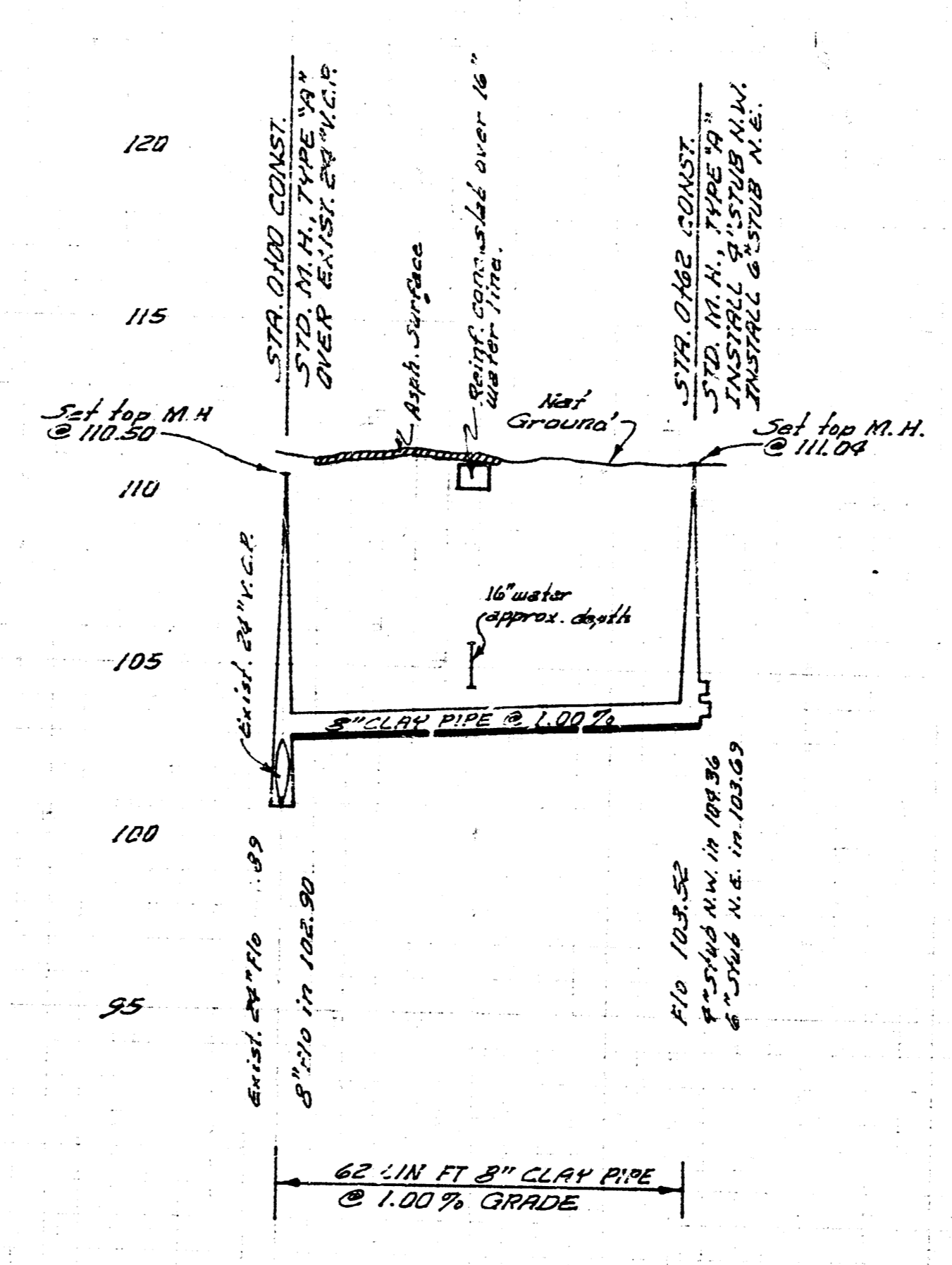


LAT. 30, SUB. 5, S.S. NO. 23  
CITY OF WICHITA, KANSAS  
B. E. SMITH, CITY ENGINEER  
PROJECT NO. C29-59  
DATE: FEB. 1970



B.M. 103.98 City Standard 29' N. & 91' E. of E. Framee & Hillside

Plan Scale 1"=20'  
Profile Scale 1"=20' Hor.  
1"=4' Vert.



DILLON'S KWIK SHOP S.S.  
CITY OF WICHITA, KANSAS  
B. E. SMITH, CITY ENGINEER  
PRIVATE PROJECT  
DATE: DEC. 1969

NOTE: TO CONTRACTOR  
Repair asphalt surface with 3" of concrete.  
Replace reinf. conc. sidewalk over 16" water line if removed.  
Contractor to excavate 12" water line prior to excavating sewer ditch so field engineer can determine elev. of water line. Use extreme caution when working around water line.