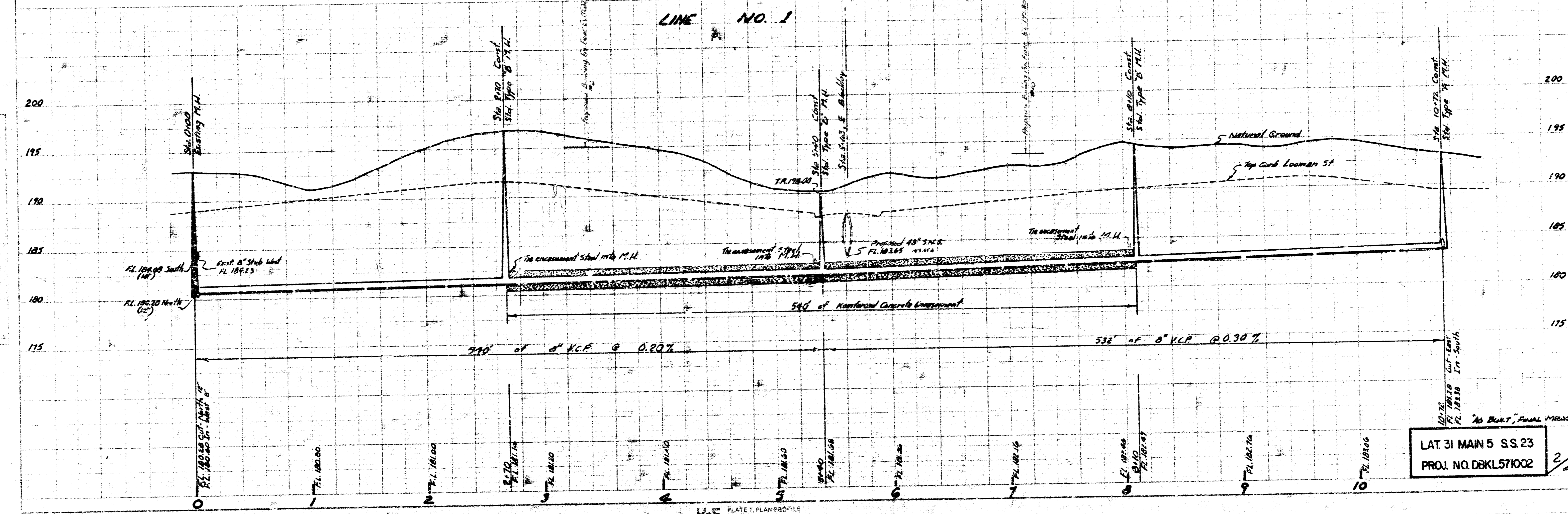
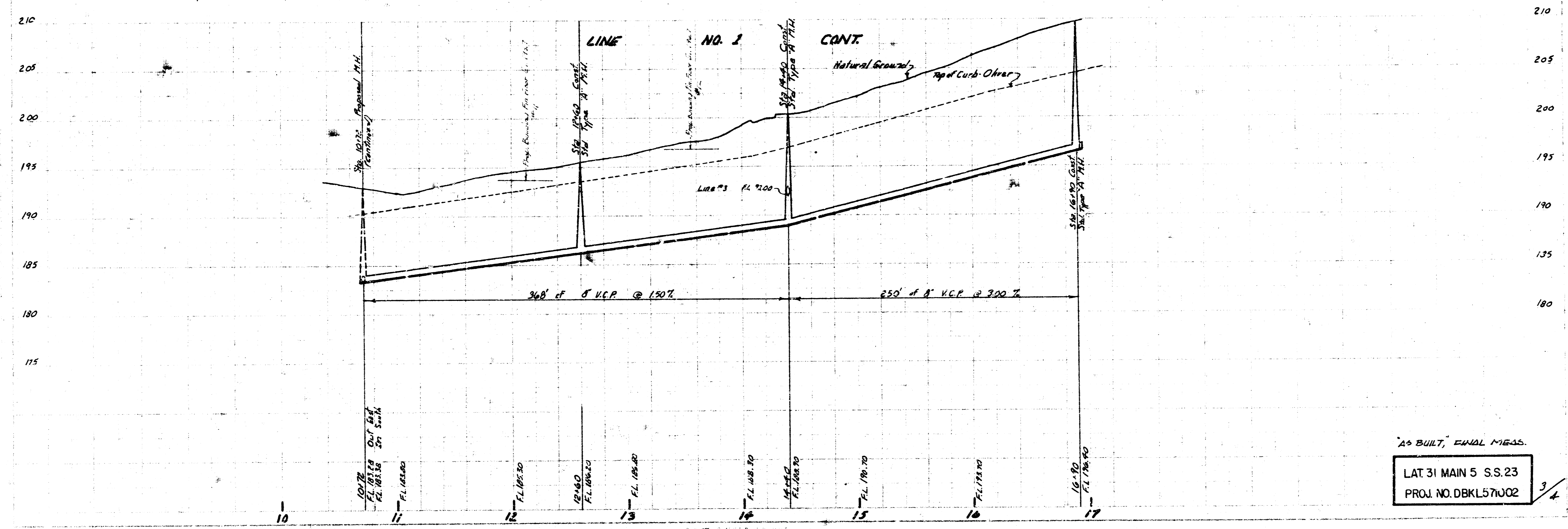
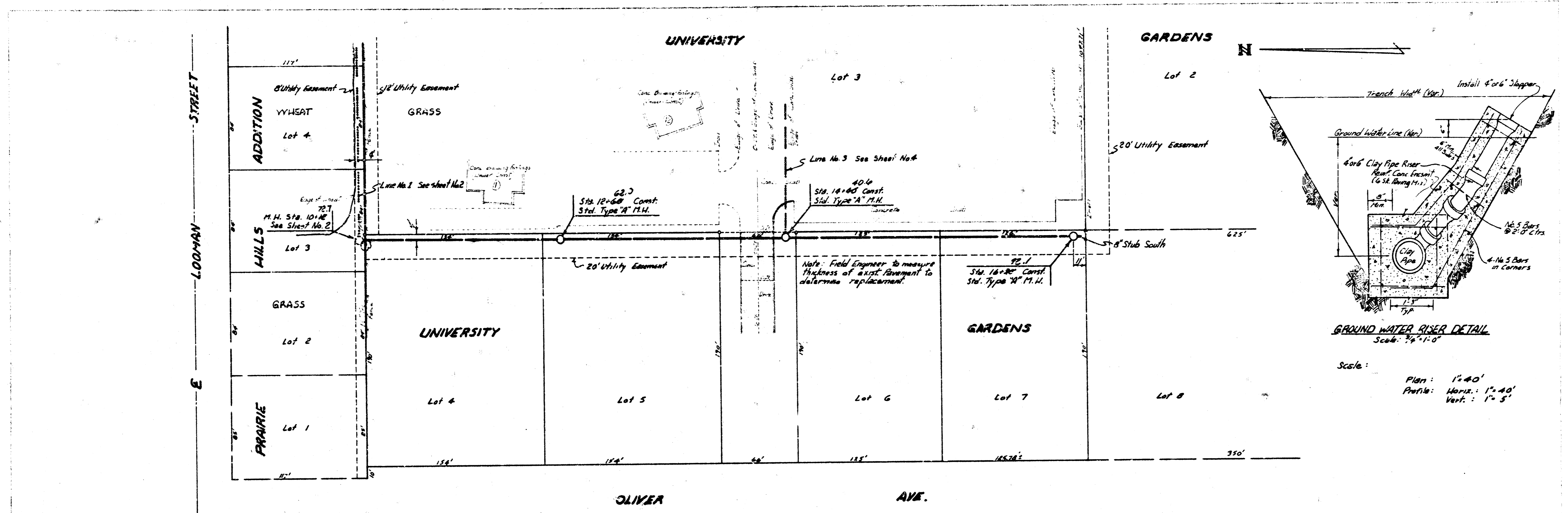


NOTE TO CONTRACTOR:  
 CONTRACTOR WILL PROVIDE 4" VIBES ON UNDERMINER SIDE OF LINE FOR LOTS 1, 2 & 3, BLOCK 6 AND LOTS 4, 7, & 8, BLOCK 7 OF PRAIRIE HILLS ADDITION IN ACCORDANCE WITH DETAIL AS SHOWN ON SHEET NO. 1. CONTRACTOR ALSO TO COMPACT DEVELOPER TO DETERMINE CONNECTION LOCATION SOUTH OF STREET AND PROVIDE VIBES IN ACCORDANCE WITH SAME DETAIL. CURVE OF LOCATION OF VIBES TO BE INCLUDED IN PRICE BID FOR THIS LINE. COST OF CONCRETE ENCASED LINES TO A POINT ABOVE THE GROUND WATER LEVEL AS SHOWN ON DETAIL SHALL BE BID AS SEPARATE ITEMS FOR "BASE, CURVE, UNDER BRASS," AND SHALL INCLUDE ALL CONCRETE ENCASUREMENT TO CONTRACTOR.

IF FIELD ENGINEER DETERMINES THAT CONCRETE ENCASUREMENT OF THE 8" SANITARY SEWER IS NOT NECESSARY, OTHER MAKEUP BIDDING WILL NOT BE USED ON THIS PROJECT.

Scale: Plan: 1" = 40'  
 Profile: 1" = 10'  
 Vert: 1" = 5'

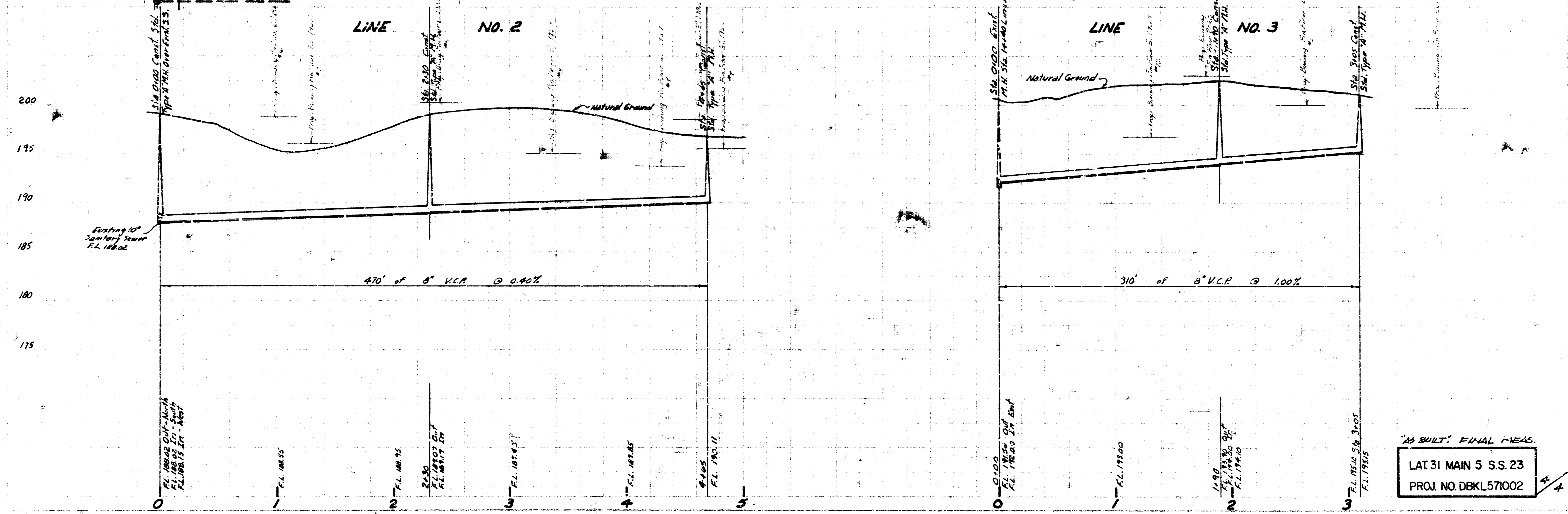
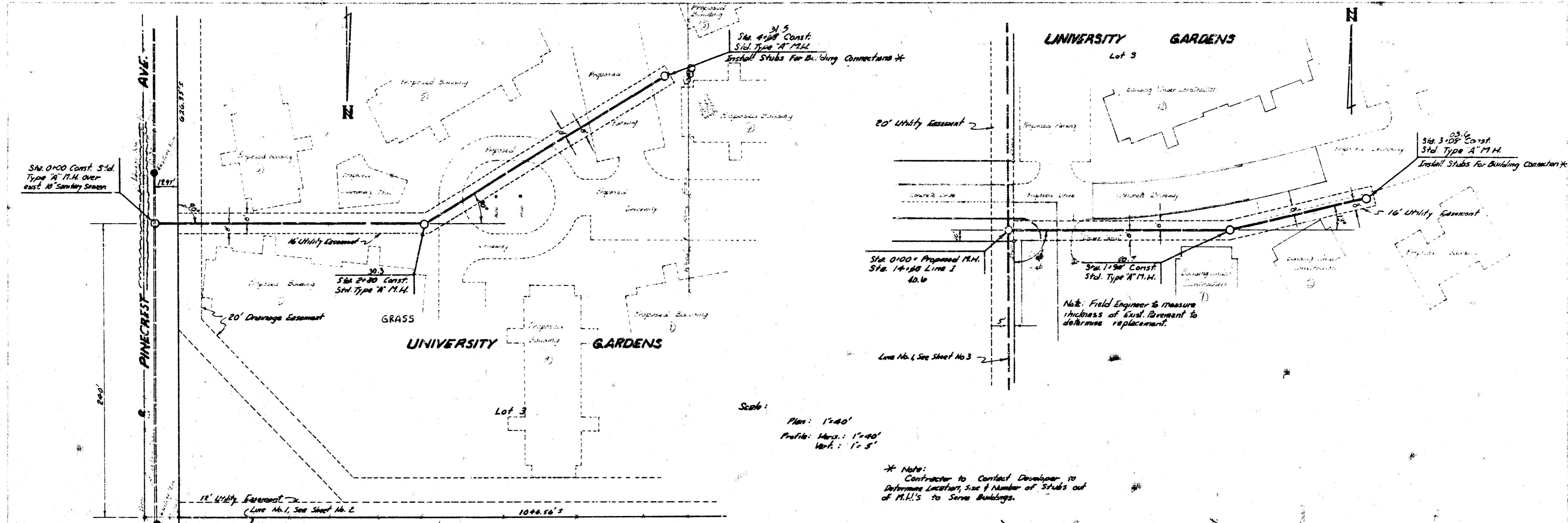




AS BUILT, FINAL MESS.

LAT 31 MAIN 5 S.S.23

PROJ. NO. DBK157002



AS BUILT FINAL MEAS.  
 LAT 31 MAIN 5 S.S. 23  
 PROJ. NO. DBKL571002