

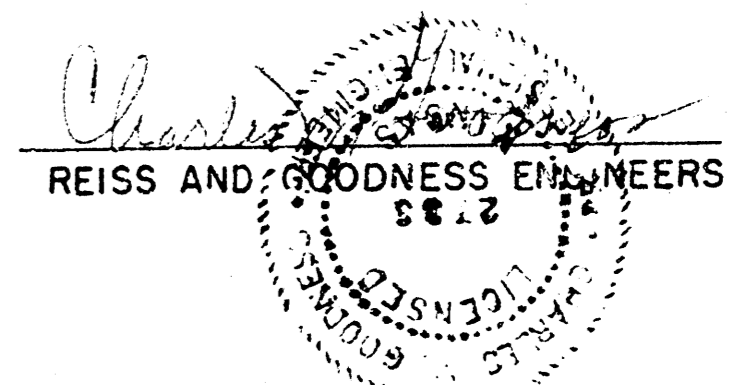
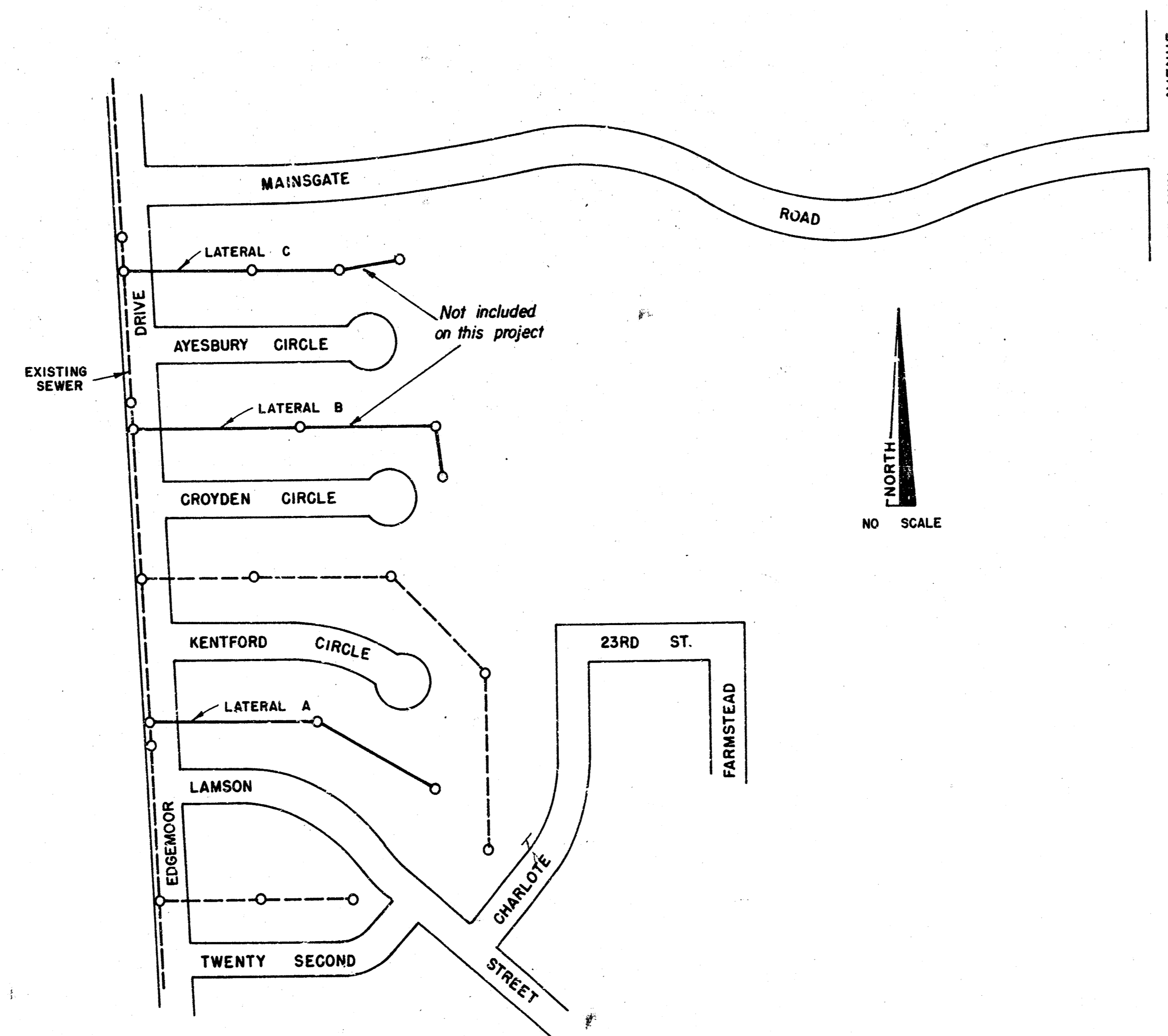
LAT 36 MAIN 5 S.S. NO. 23
CITY OF WICHITA, KS.

R. W. LINN ——— CITY ENGINEER

PROJECT NUMBER: DBKL577071
PLANS

SANITARY SEWER EXTENSIONS

WOODLAWN PLACE 3rd ADDITION

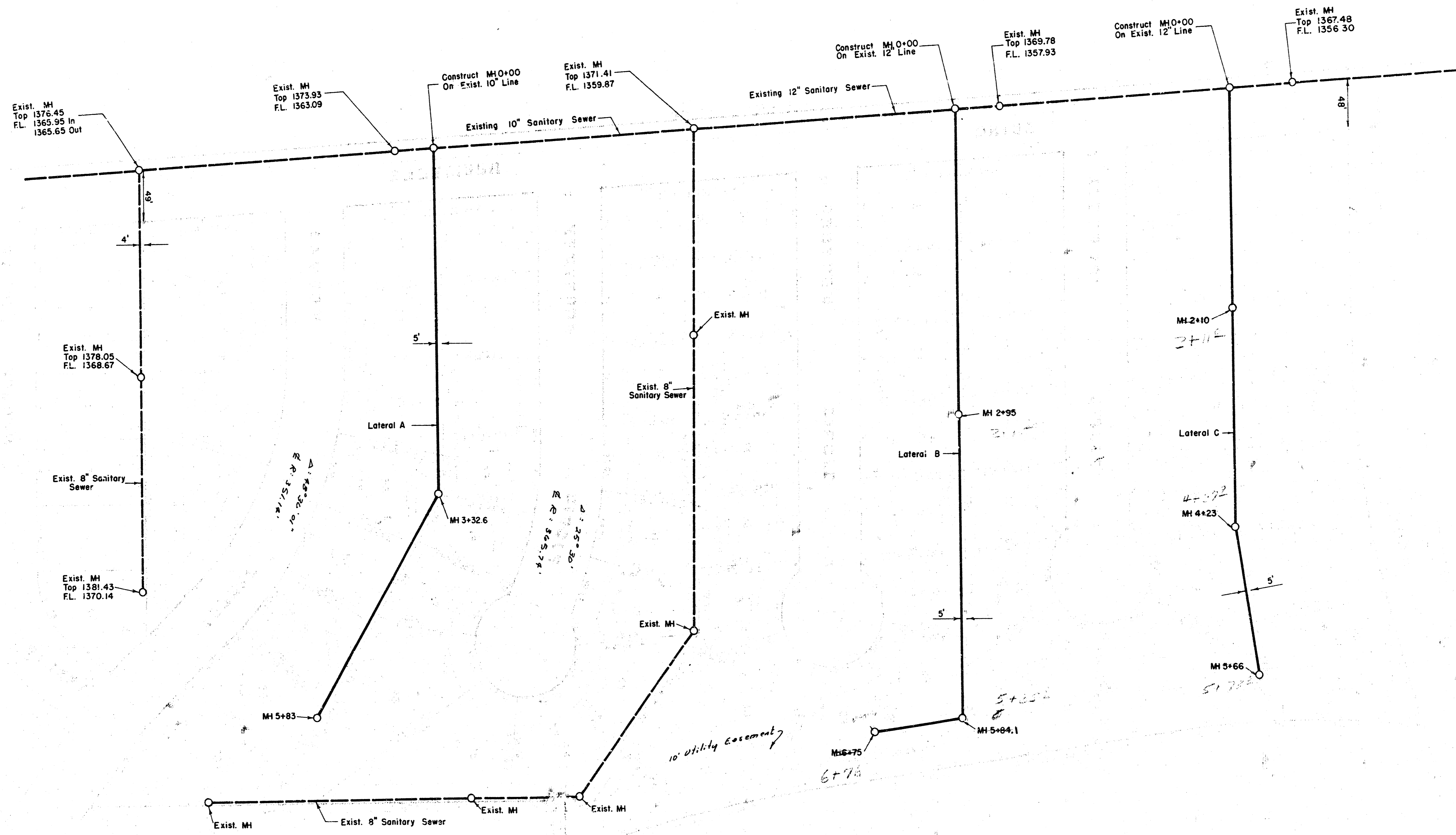


REISS & GOODNESS ENGINEERS
2160 WEST 21ST STREET
WICHITA, KANSAS 67204
(316) 832-0235

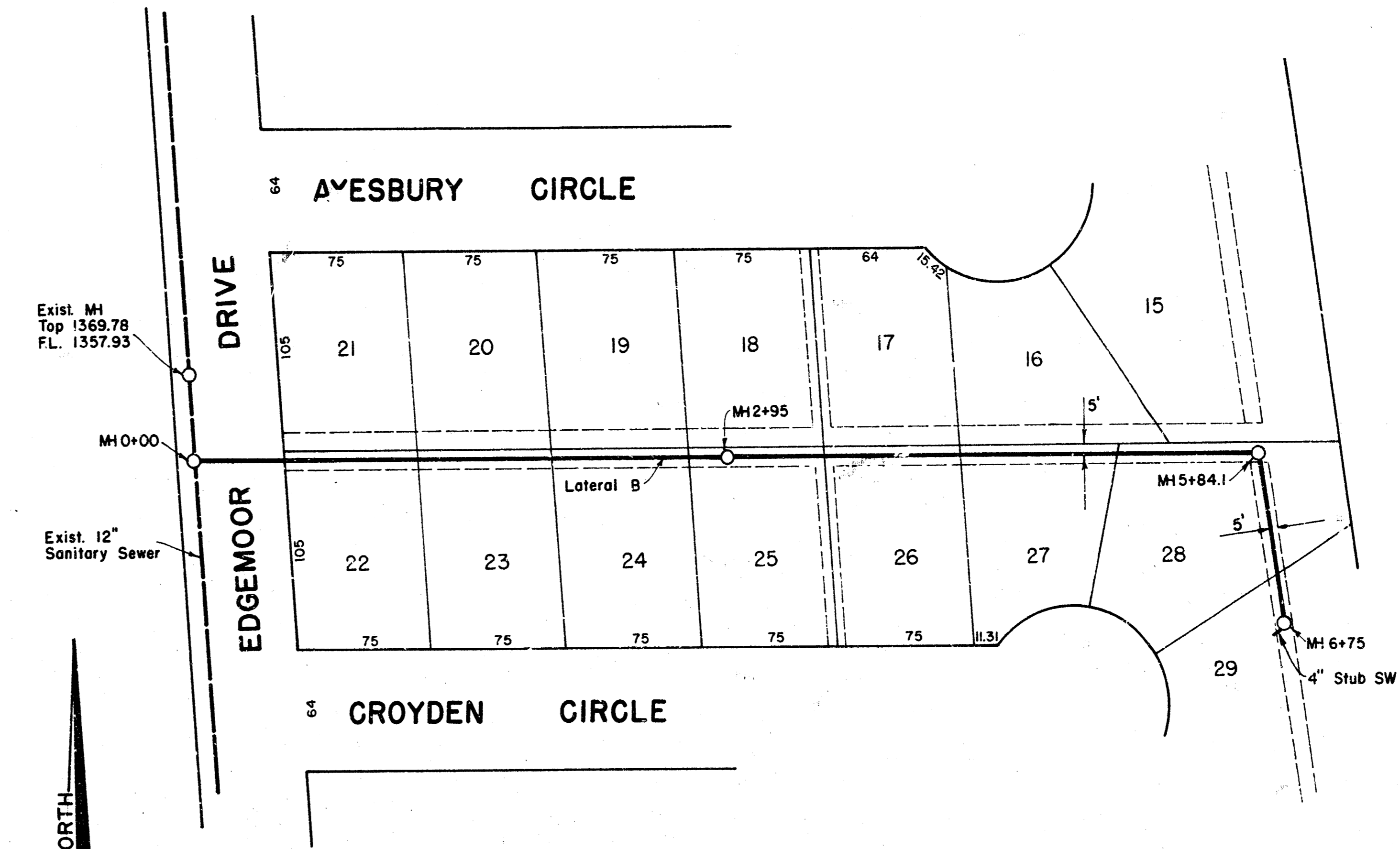
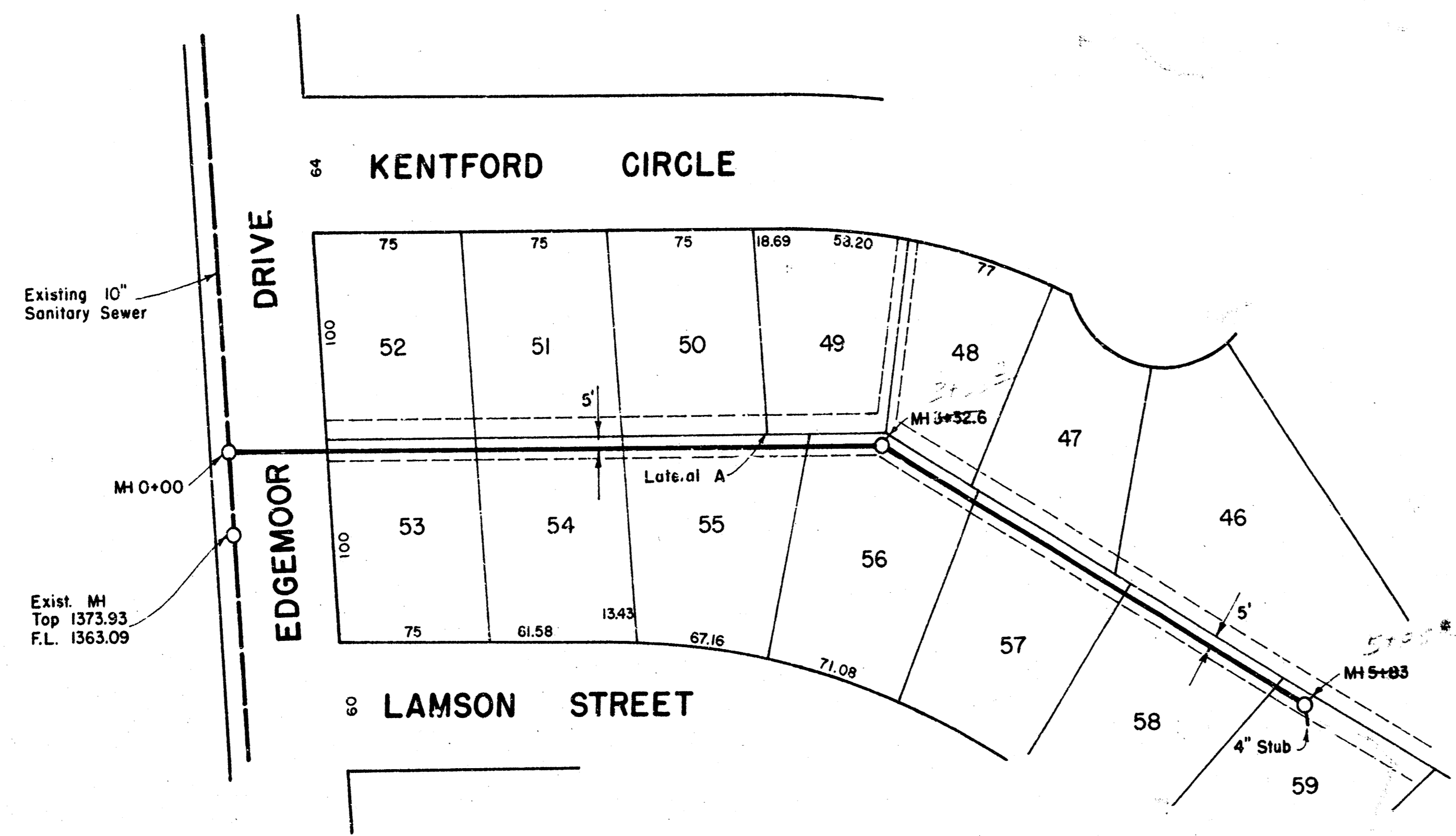
REVISION	DRAWN BY L. Thompson	CHECKED BY	DESIGNED BY K. Hill	PROJECT SANITARY SEWER EXTENSIONS	CUSTOMER FIDELITY DEVELOPMENT INC	SCALE NO SCALE	PROJECT NO. 1	SHEET 3
	4-29-77					DATE 4-29-77		

Note: Laterals B and C are not included on this project

NORTH
Scale 1" = 60'

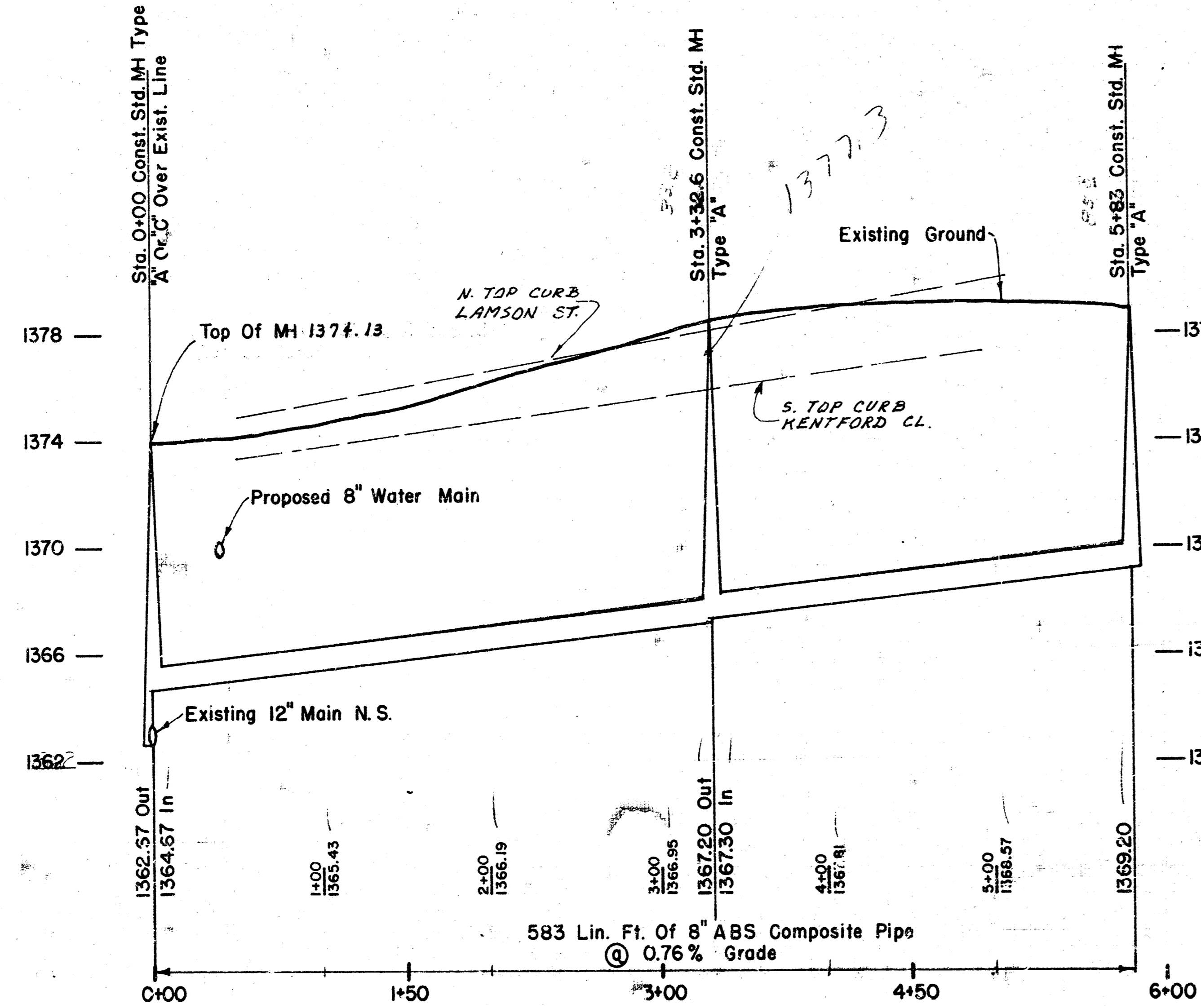


- * B.M. 1 1367.58 "□" Center Conc. Abutment N. Side
RCBG Mainsgate & 130' Drainage Easmt
- * B.M. 2 1368.43 Top Of Top Flange Bolt Mue"lter
Fire Hydrant At Mainsgate & Edgemoor

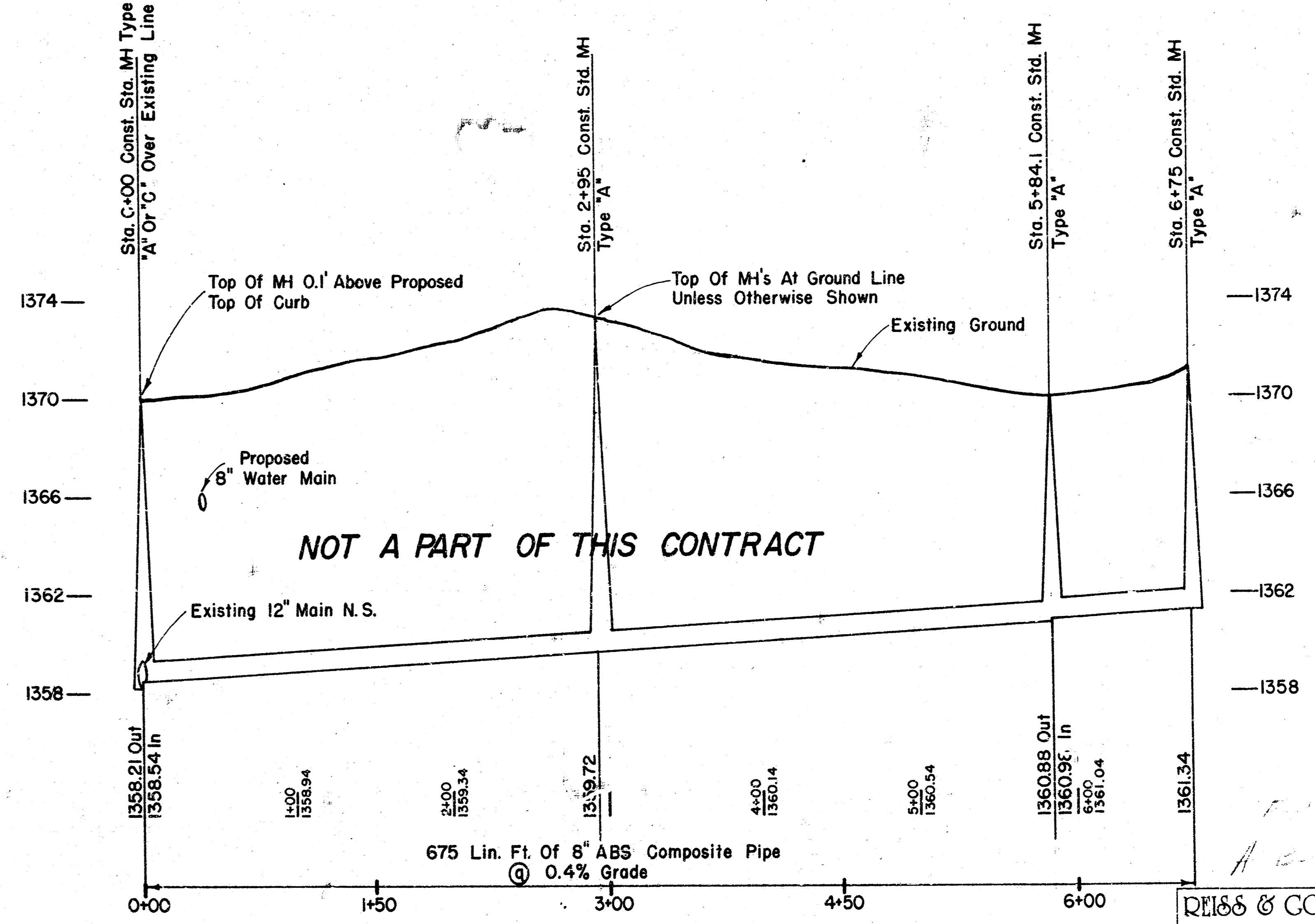


NORTH
Scale 1" = 60'

Lateral A
Scale 1" = 60' Horiz.
1" = 4' Vert.



Lateral B
Scale 1" = 60' Horiz.
1" = 4' Vert.



REISS & GOODNESS ENGINEERS
2100 WEST 21ST STREET
WICHITA, KANSAS 67204
(316) 832-0211