

# LATERAL 4, MAIN 6, SS NO. 23

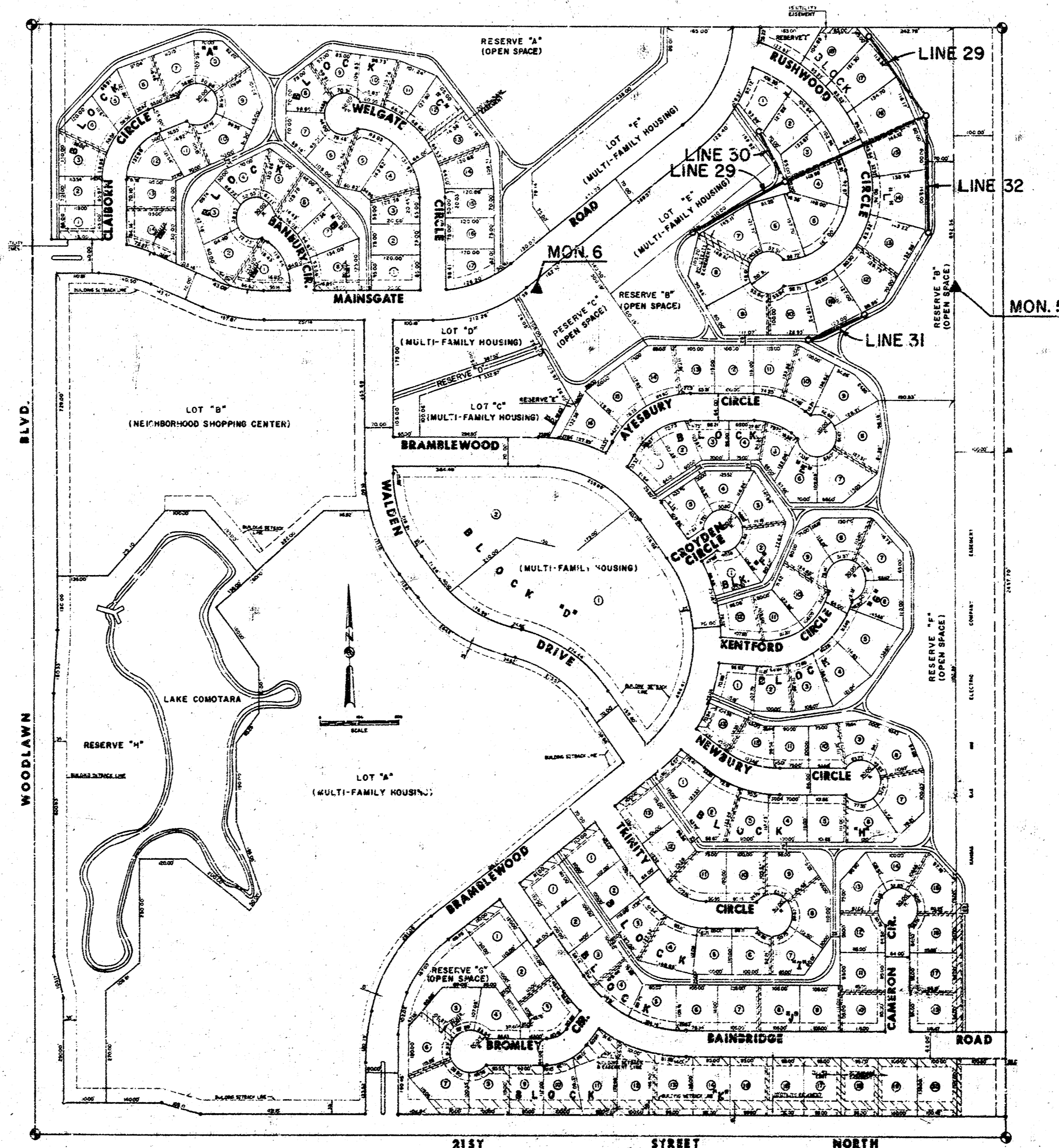
## PROJECT NO. DBKL 574072

CITY OF WICHITA, KANSAS  
 R. W. LINN CITY ENGINEER

NOTES: Installation of Service Line Stubs and construction of fill around Manholes above existing ground shall be incidental to Manhole Construction.

Sand backfill in place including cost of sand, placing, jettison and vibrating shall be included in the price bid for Lin. Ft. of sewer.

The cost of clearing right of way to facilitate construction of sanitary sewers shall be incidental to the project.

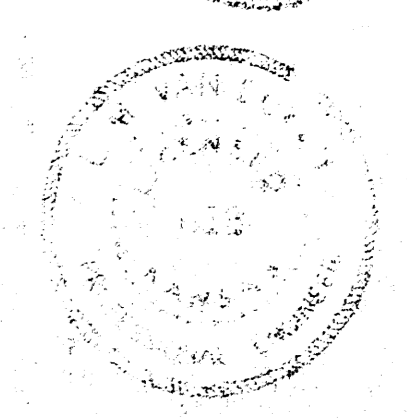


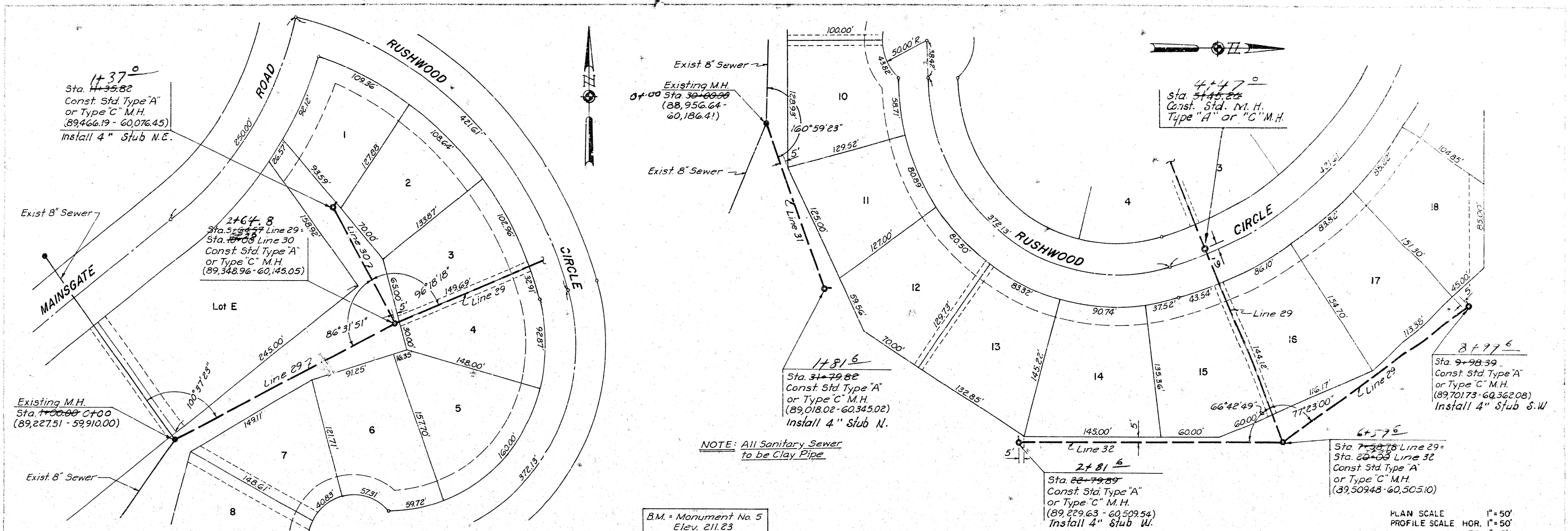
INDEX TO DRAWINGS

SHEET NO.	DESCRIPTION
1	TITLE SHEET
2	LINE 29, 30, 31, 32
3-4	DETAILS OF SEWER APPURTENANCES

MONUMENT NO.	COORDINATES		ELEVATION
	NORTH	EAST	
5	389,060.76	2,360,628.00	211.23
6	389,079.36	2,359,489.27	199.63

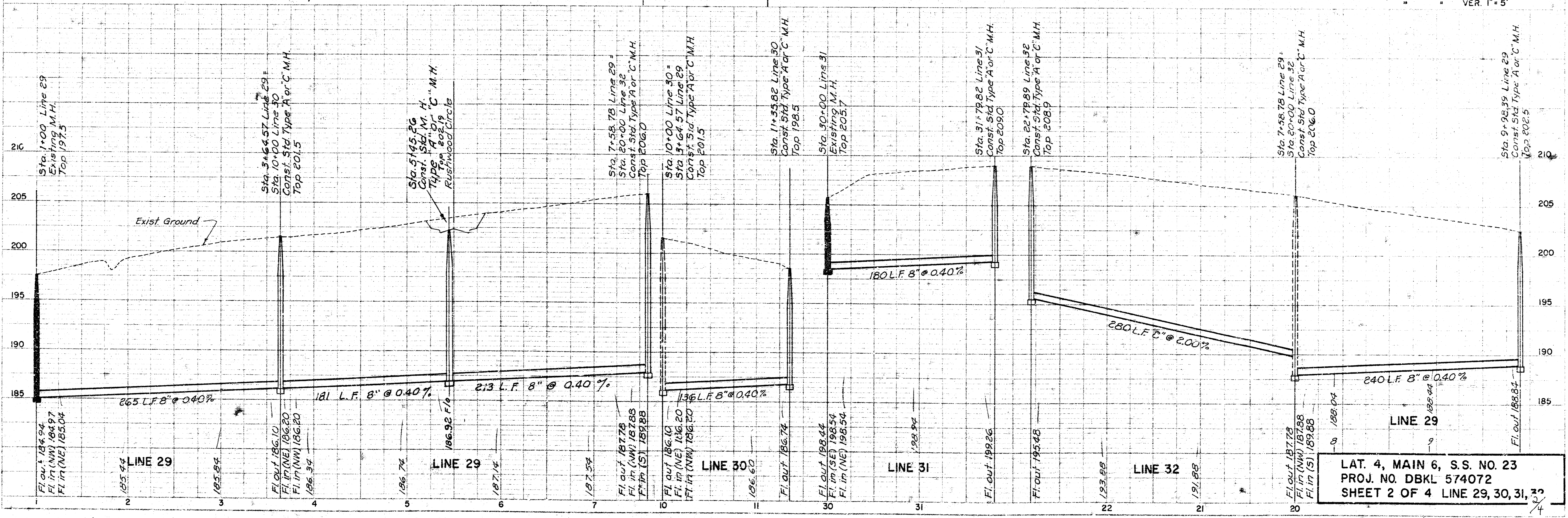
MONUMENTS SHOWN: ▲ MON. NO.



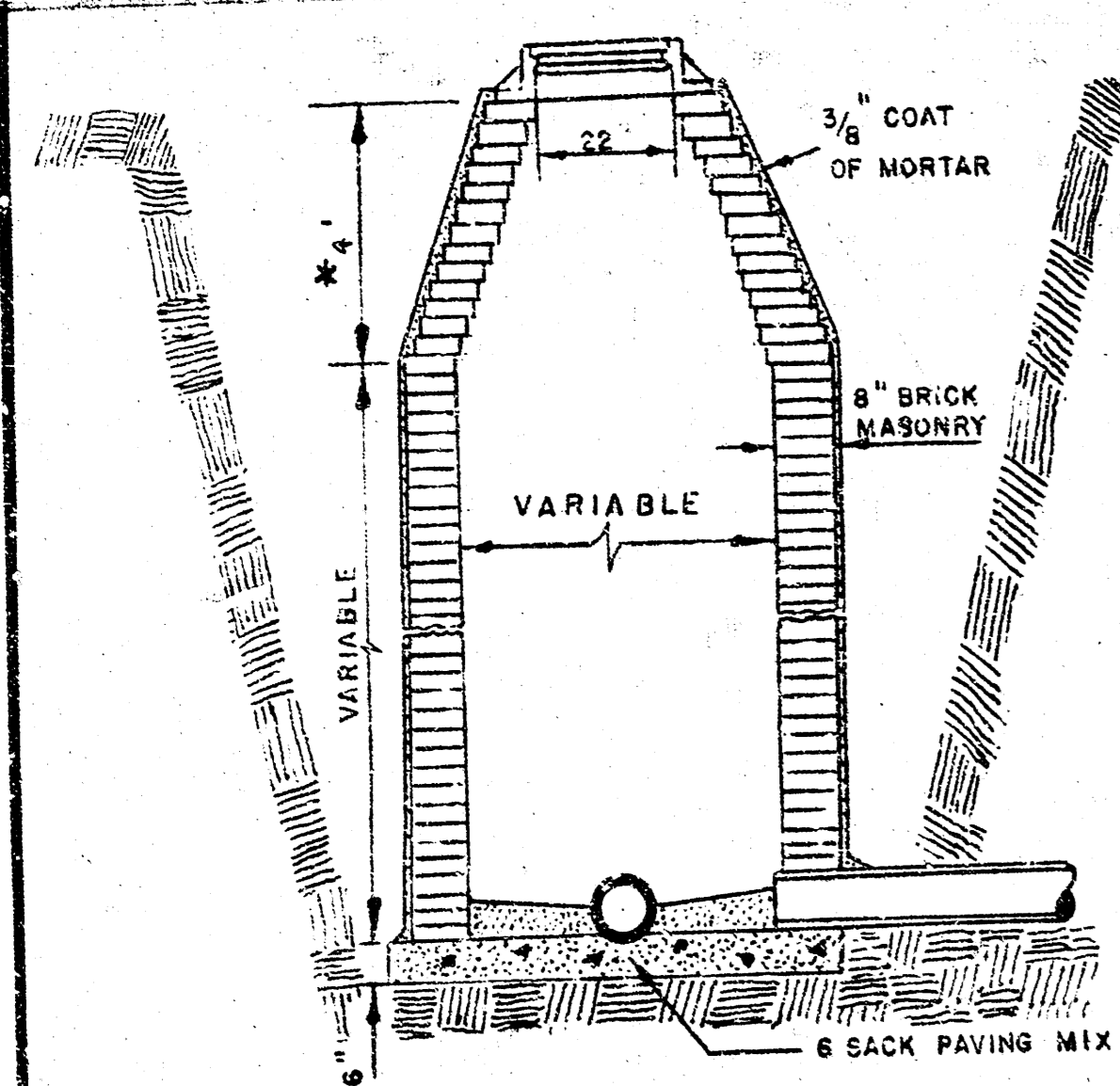


B.M. = Monument No. 5  
Elev. 211.23

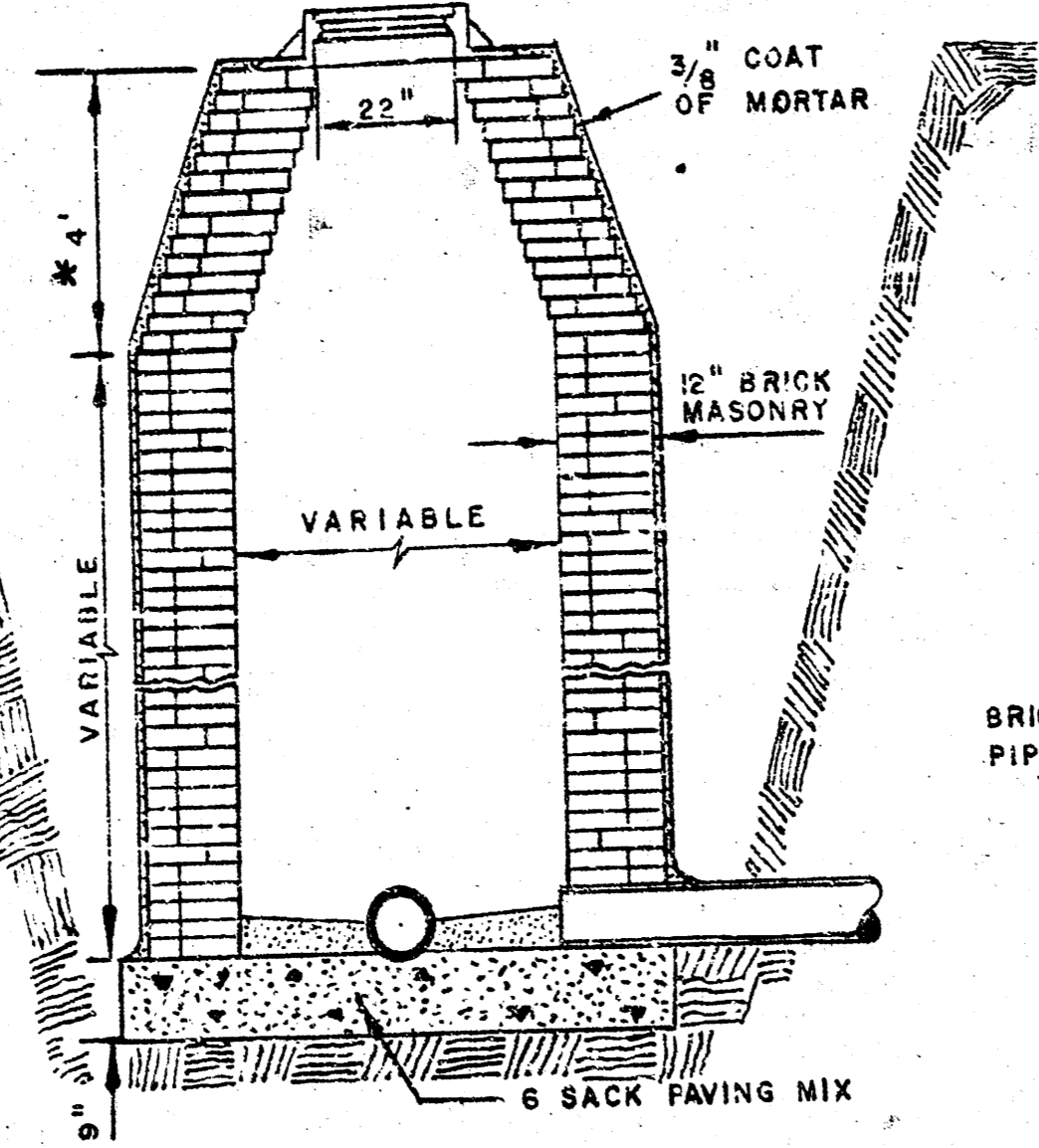
PLAN SCALE 1" = 50'  
PROFILE SCALE HOR. 1" = 50'  
VER. 1" = 5'



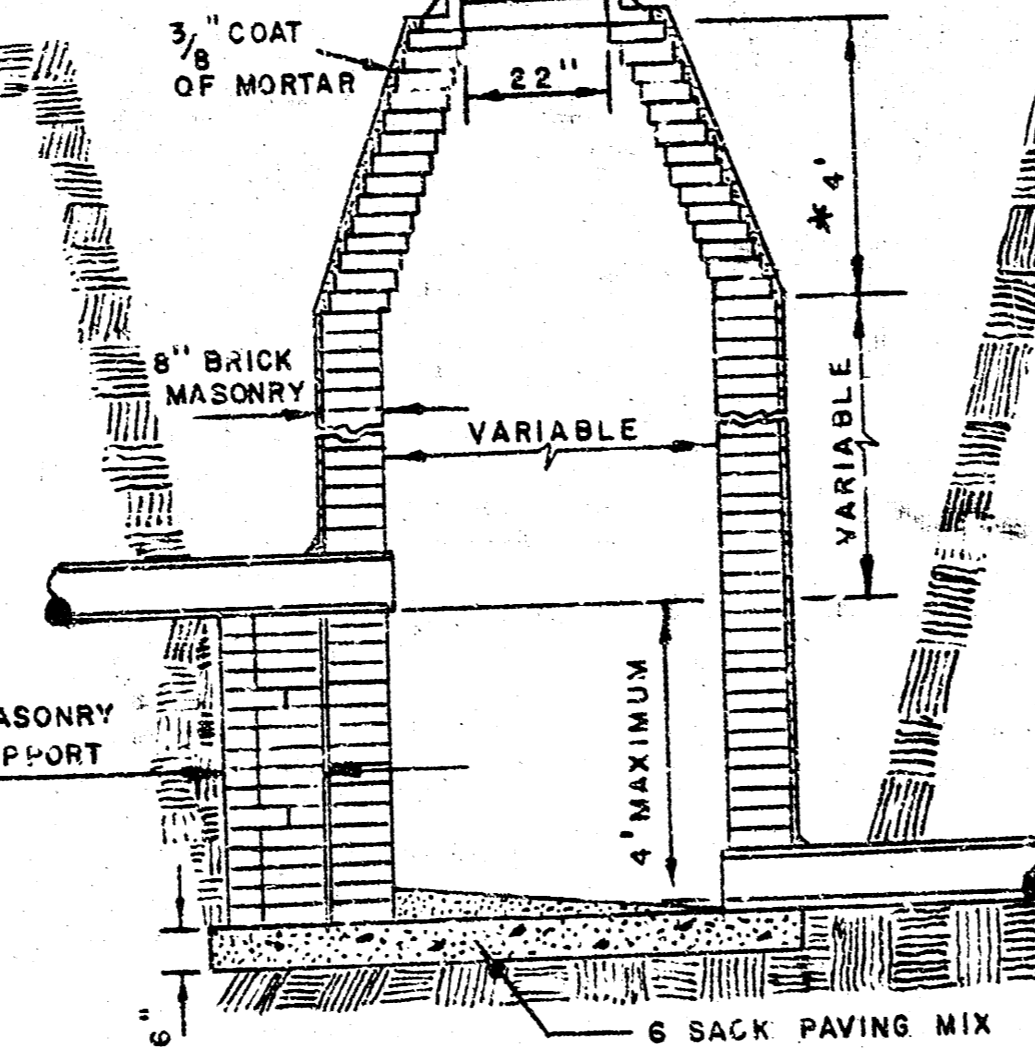
LAT. 4, MAIN 6, S.S. NO. 23  
PROJ. NO. DBKL 574072  
SHEET 2 OF 4 LINE 29, 30, 31, 32



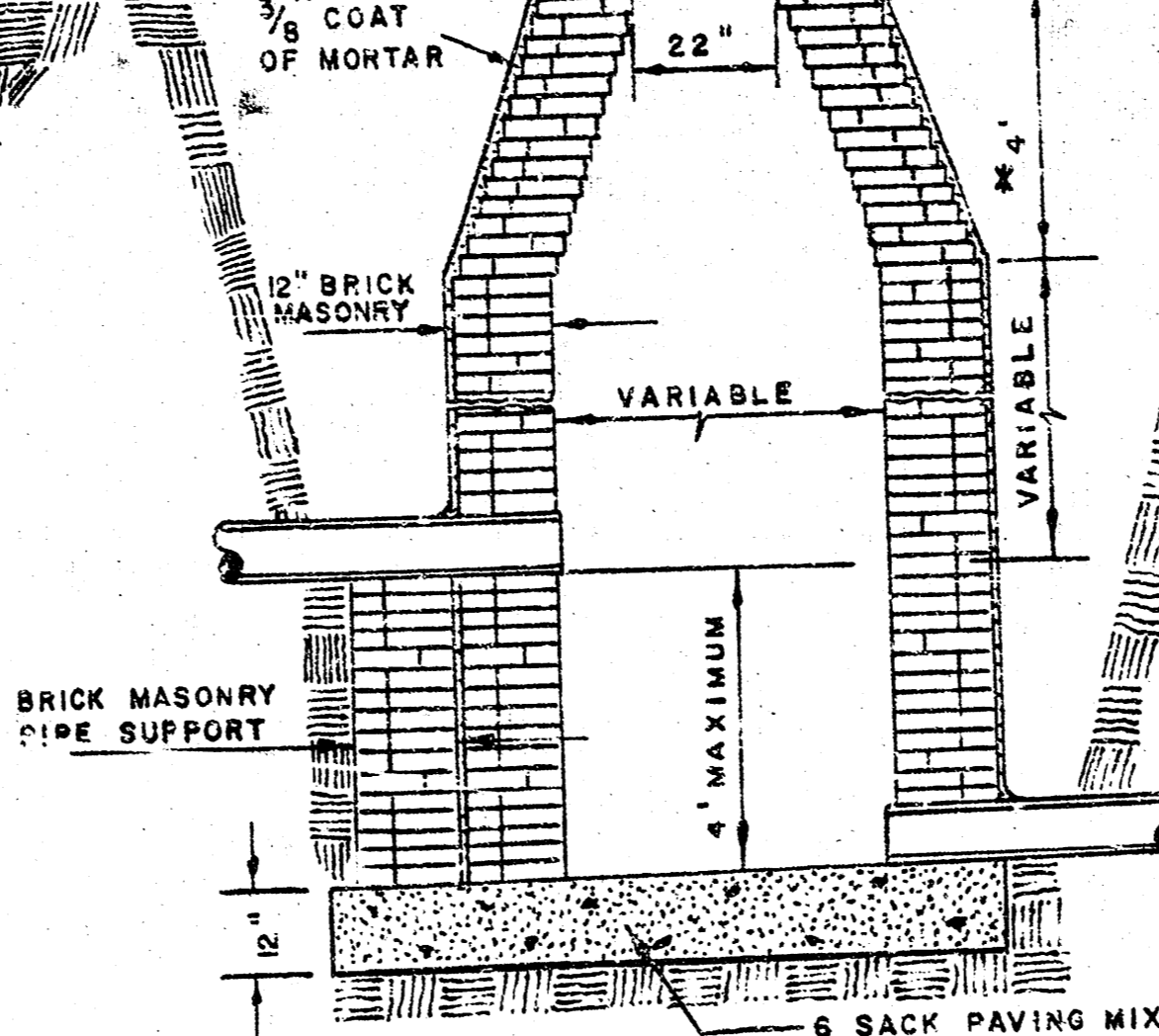
STANDARD MANHOLE TYPE "A"



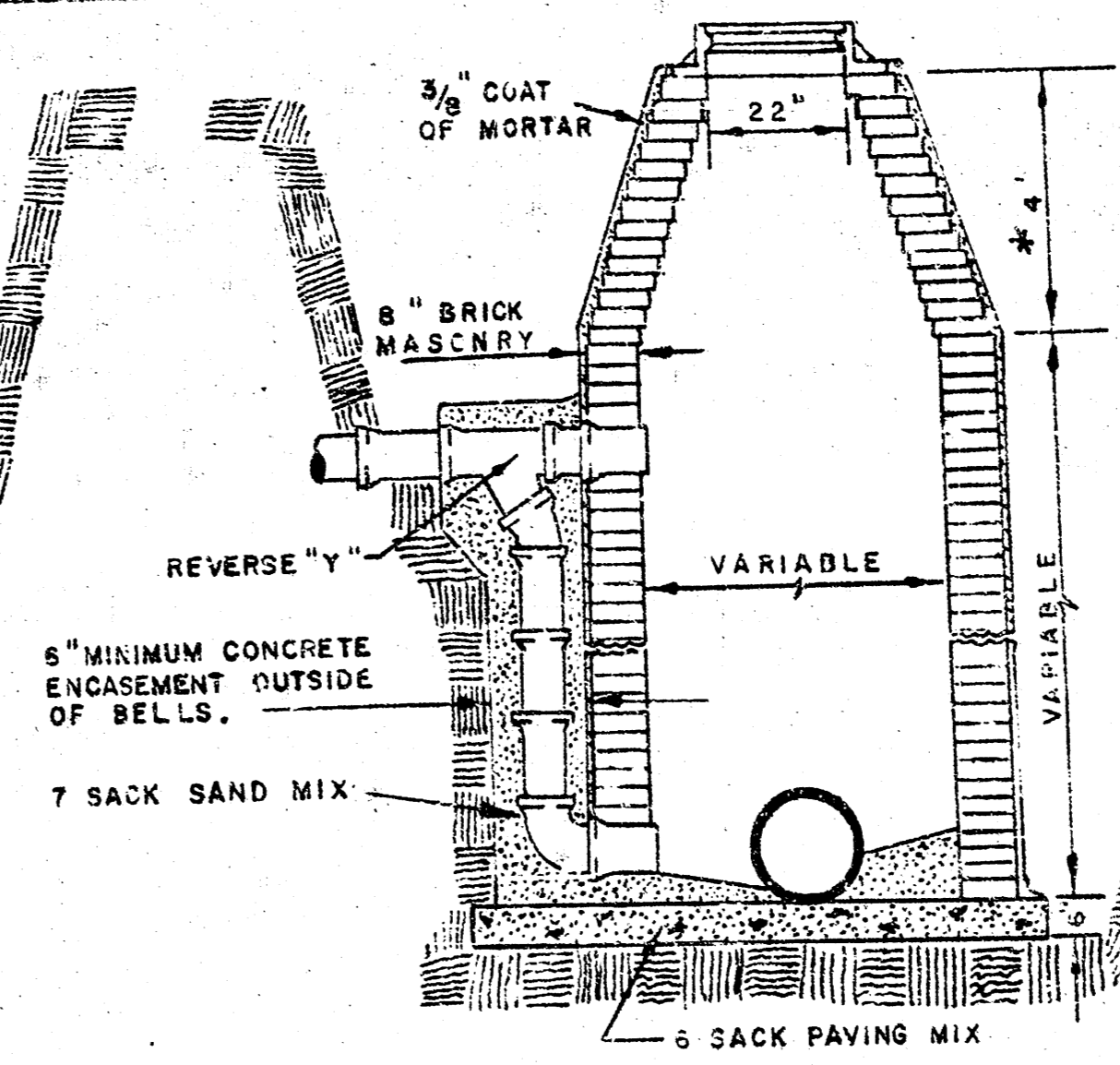
STANDARD MANHOLE TYPE "B"



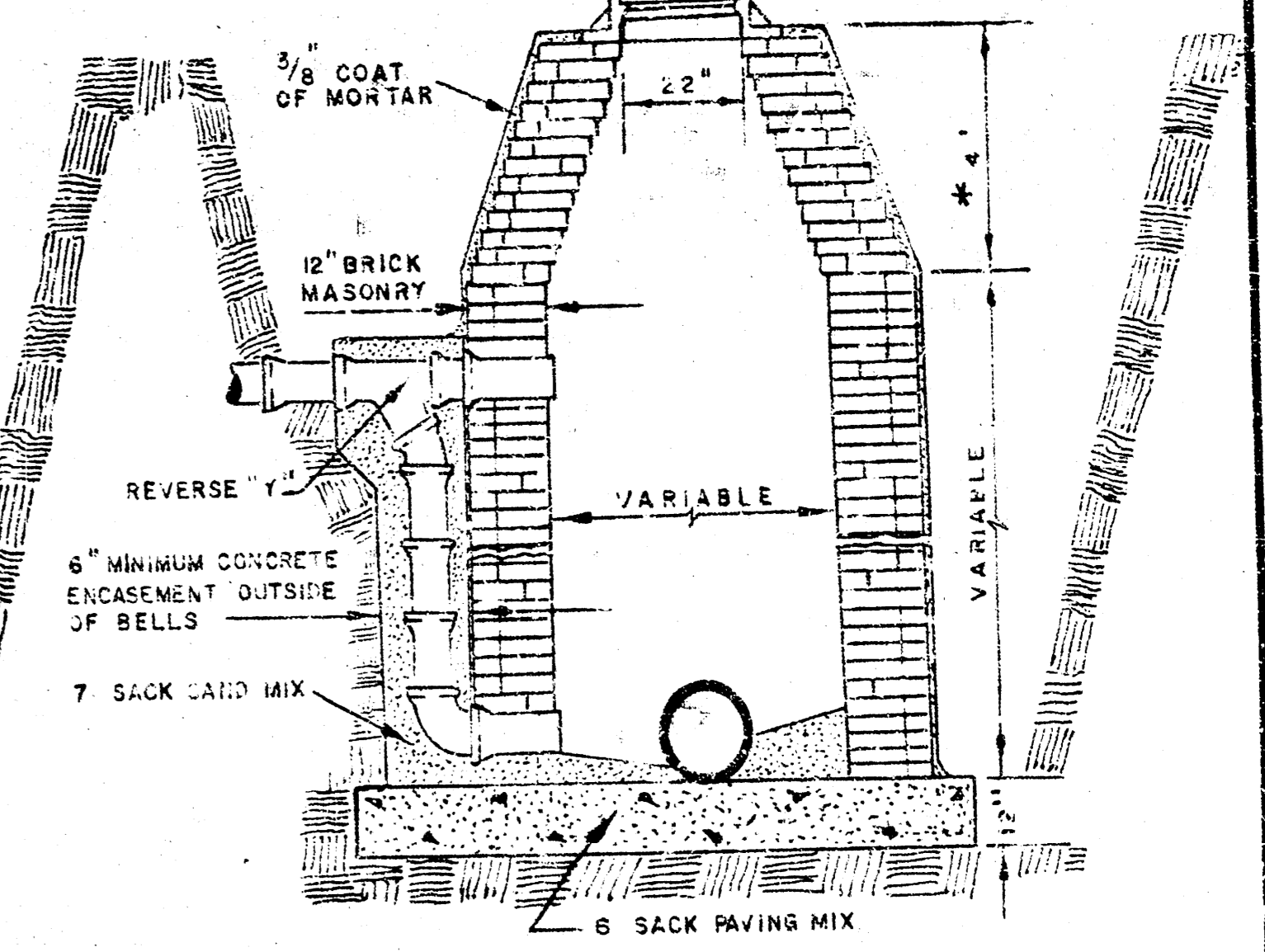
DROP MANHOLE TYPE "A"



DROP MANHOLE TYPE "B"

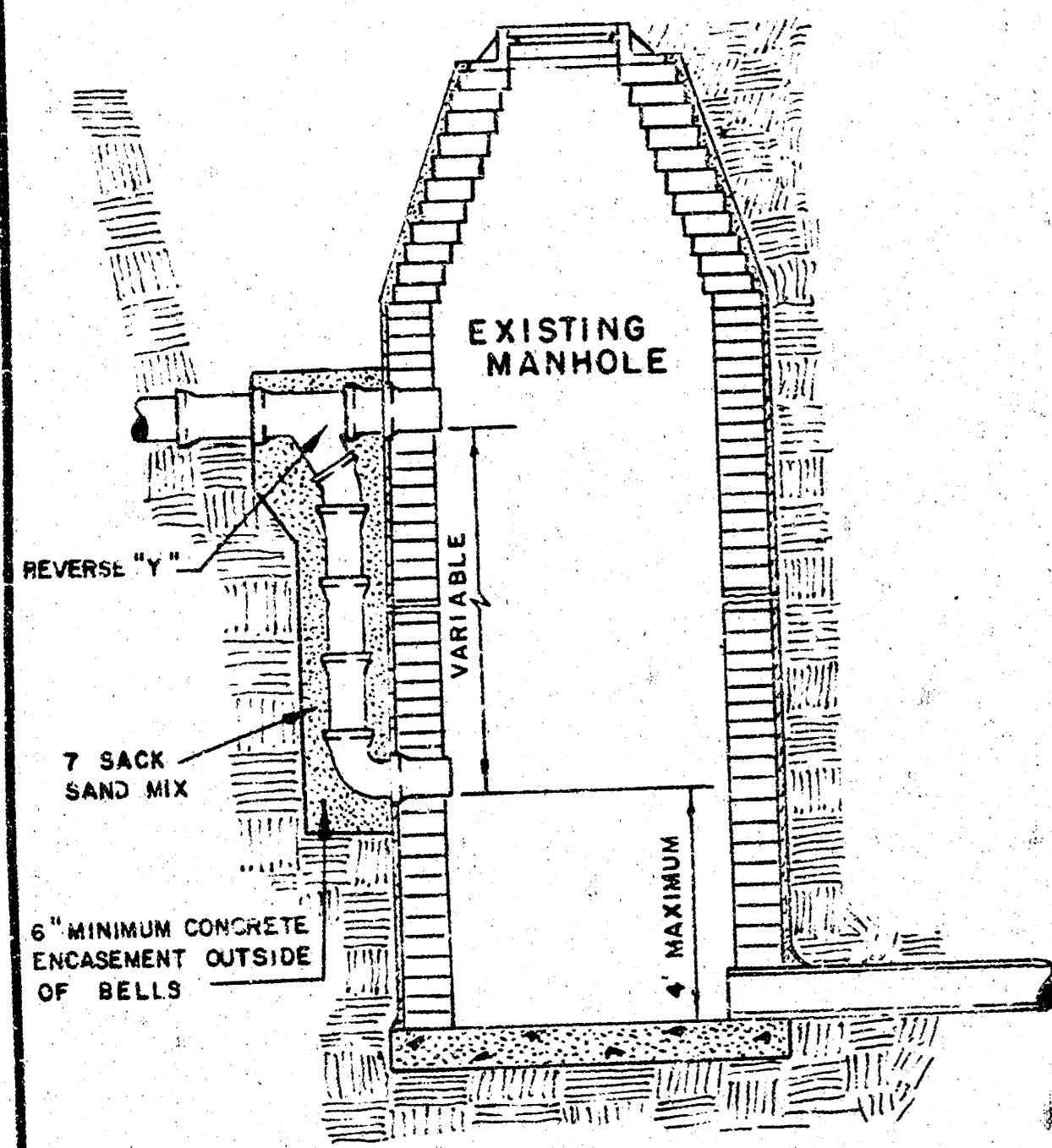


OUTSIDE DROP MANHOLE TYPE "A"

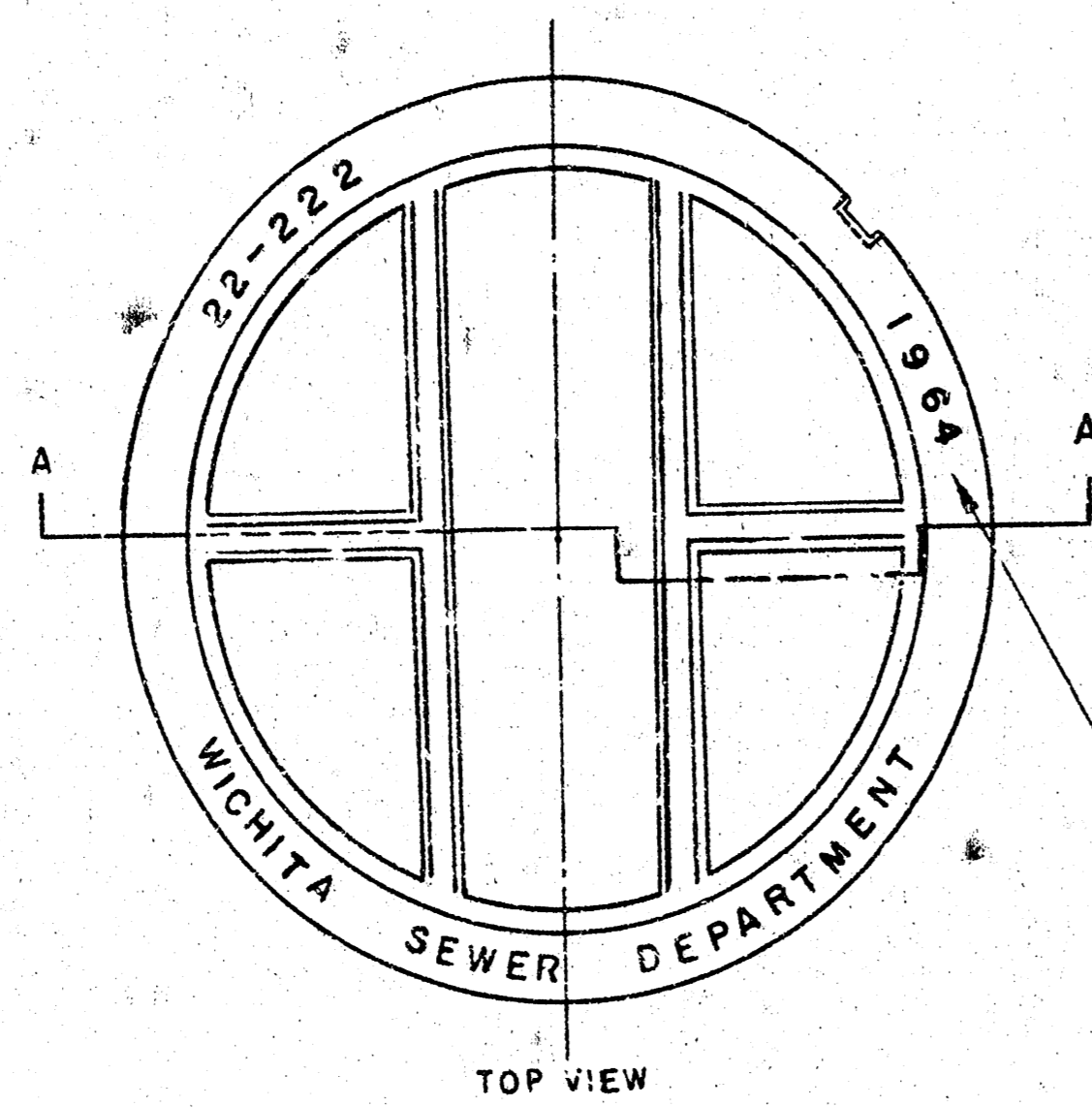


OUTSIDE DROP MANHOLE TYPE "B"

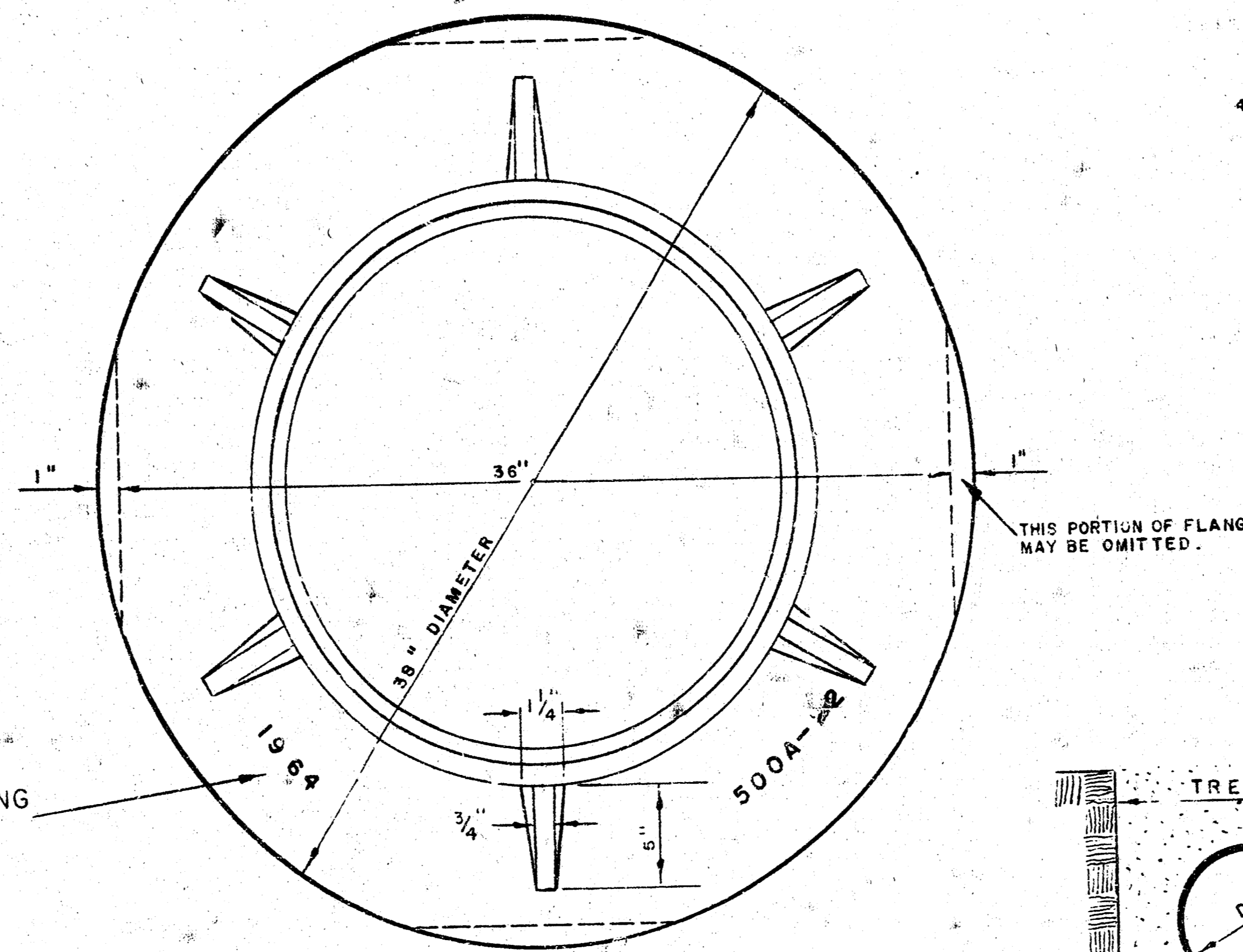
\* DRAW = 6' ON 5' DIA. M.H.



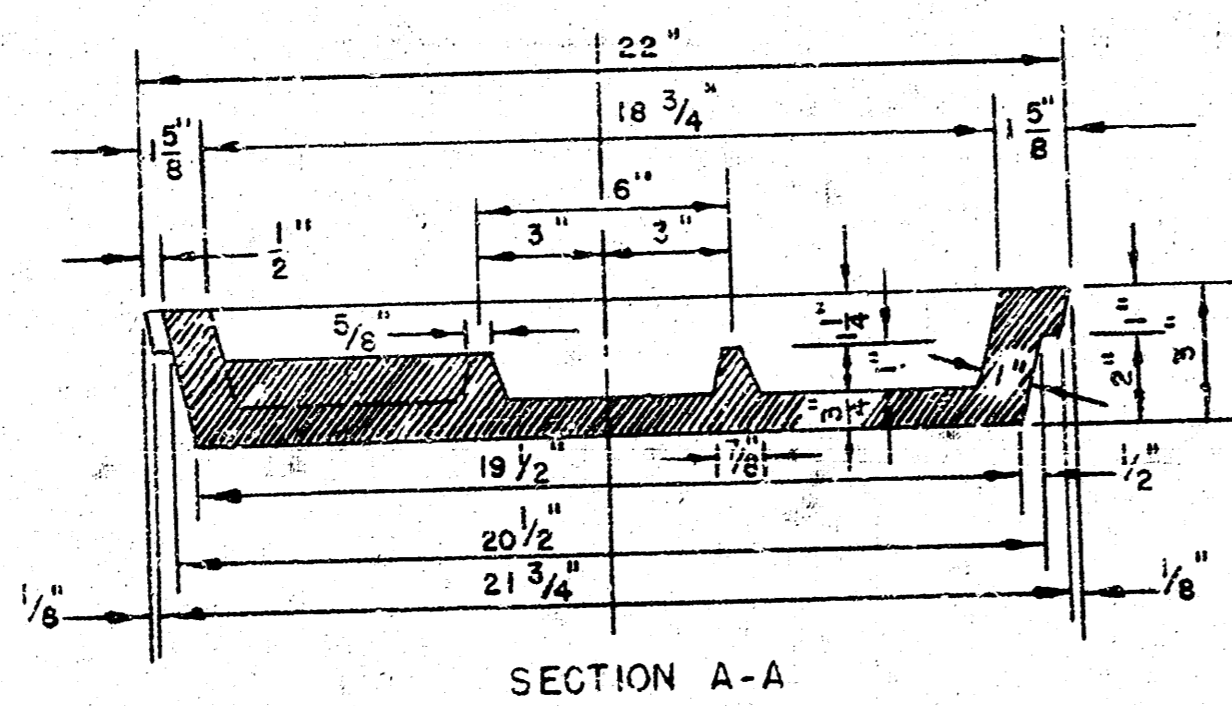
DETAIL OF DROP STACK FOR EXISTING MANHOLES IN GROUND WATER



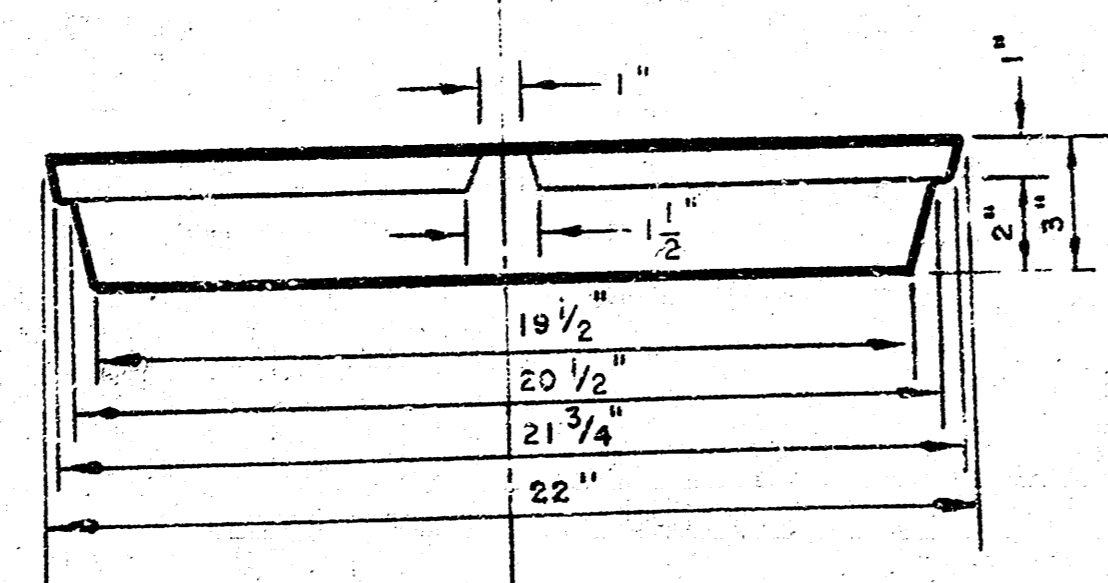
MANHOLE COVER WEIGHT 110 lbs.



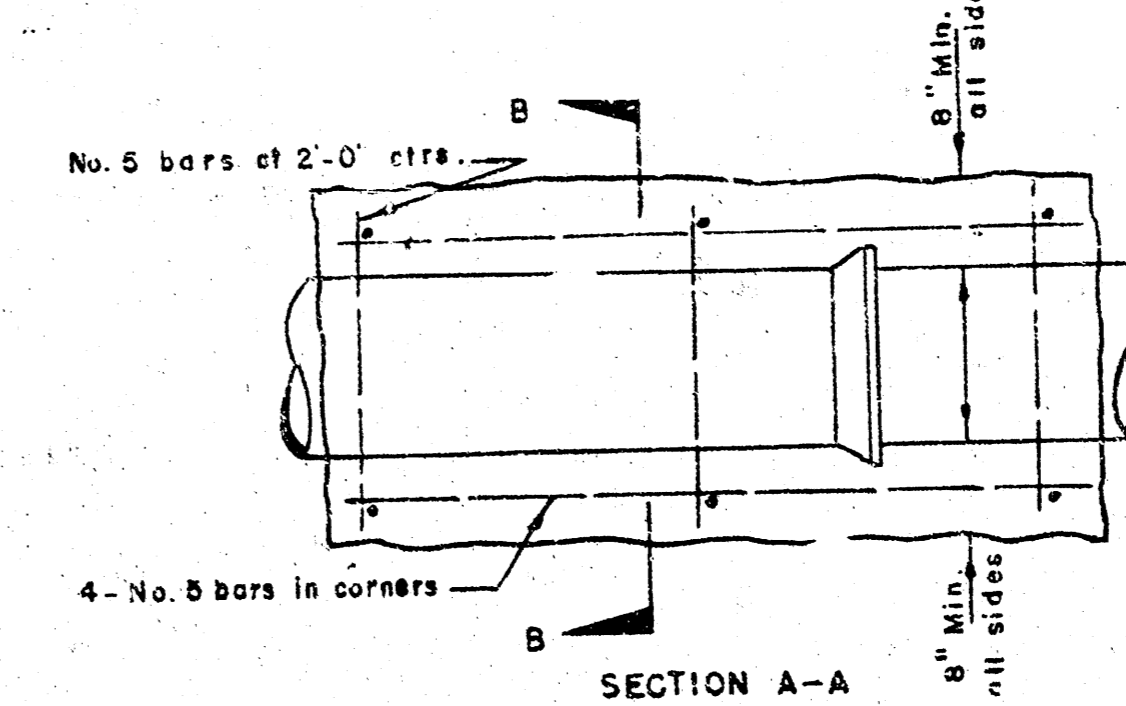
MANHOLE RING WEIGHT 355 lbs.



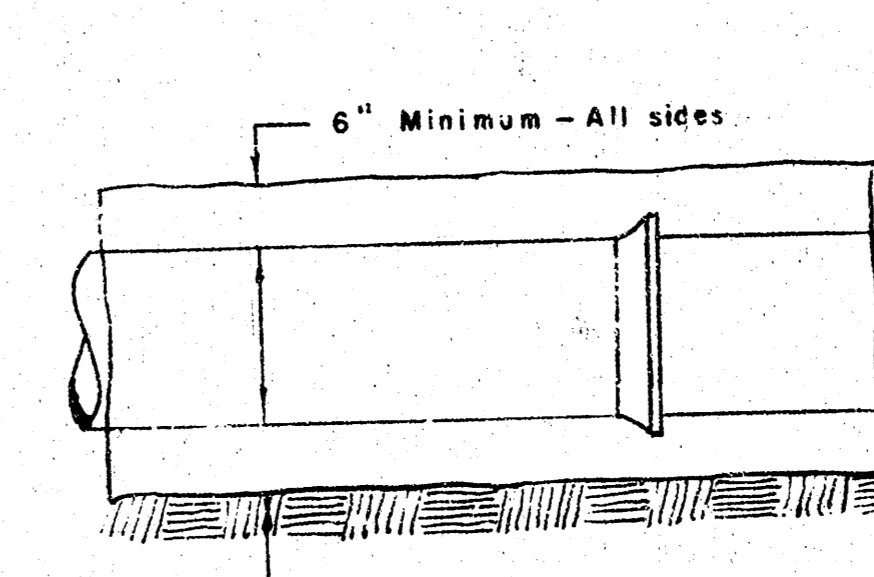
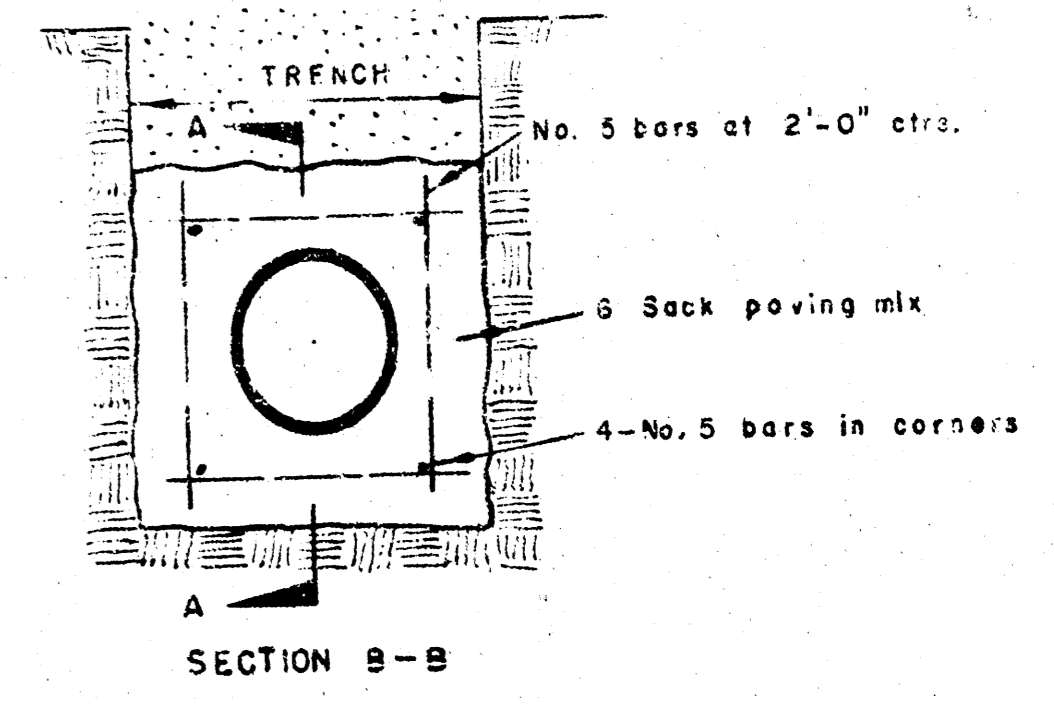
MANHOLE COVER



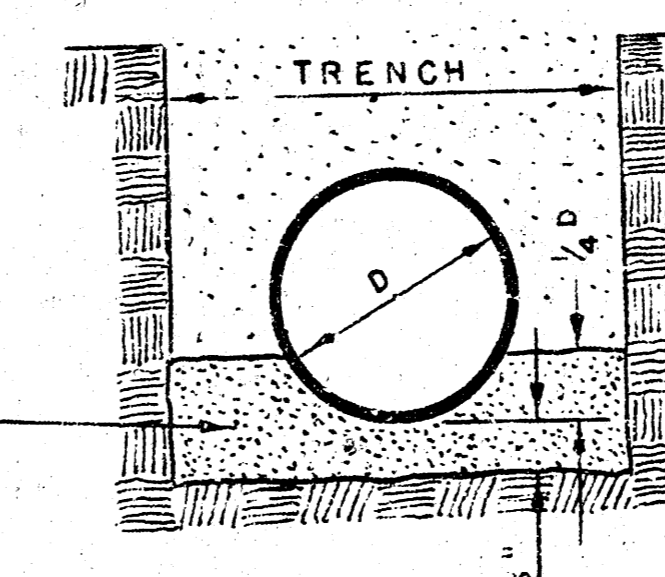
MANHOLE COVER



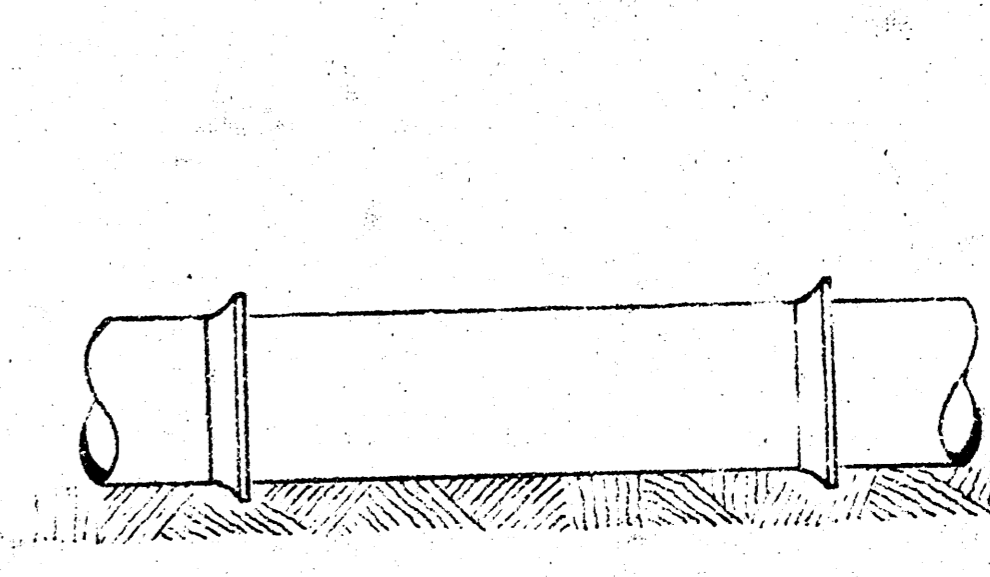
REINFORCED CONCRETE ENCASEMENT FOR STRENGTH



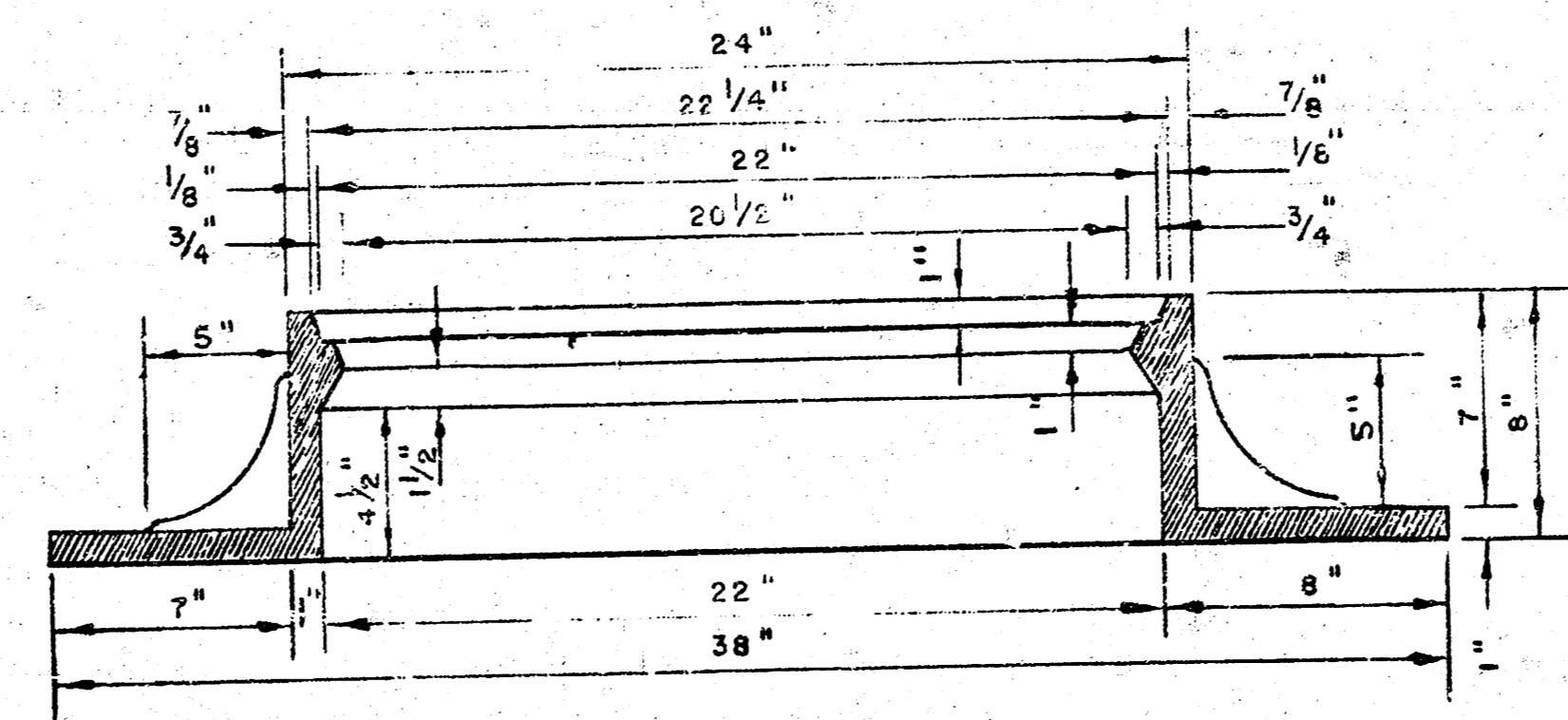
CONCRETE ENCASEMENT FOR COVER



DETAIL OF CONCRETE GRADLE

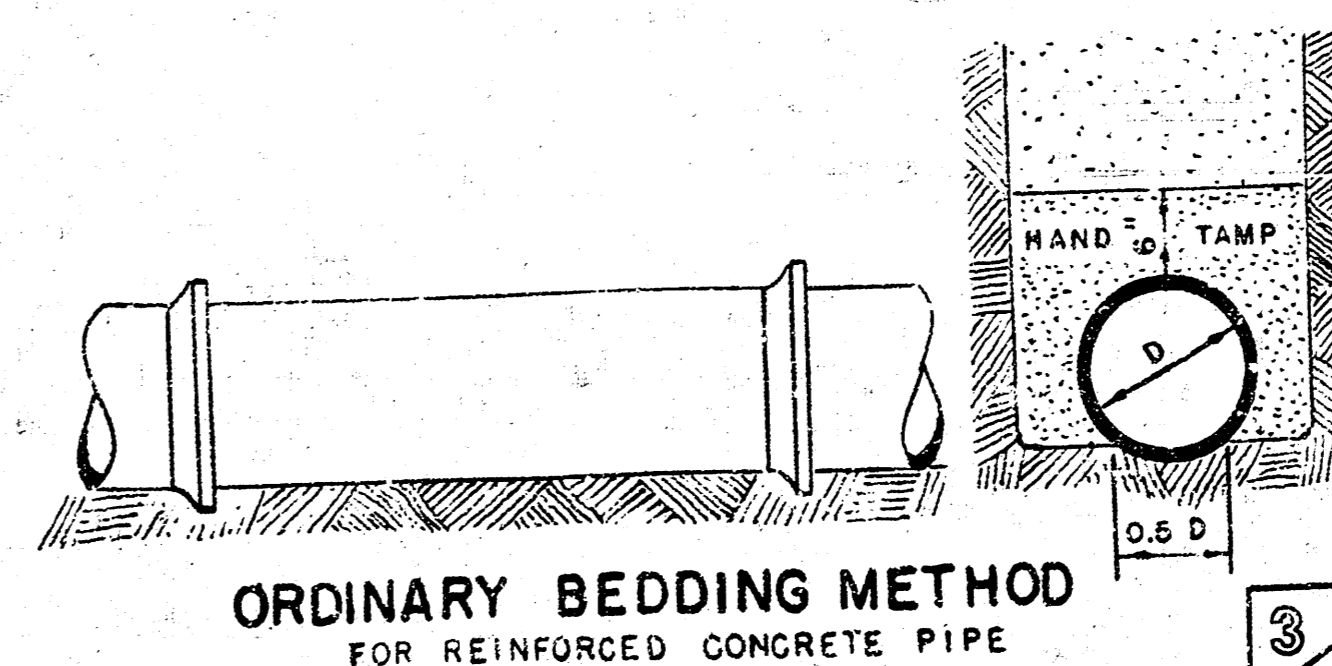


ORDINARY BEDDING METHOD FOR CLAY PIPE



MANHOLE RING

OUTSIDE CIRCUMFERENCE OF COVER AND THE INNER FACE AND SEAT OF RING TO BE MACHINE FIT.

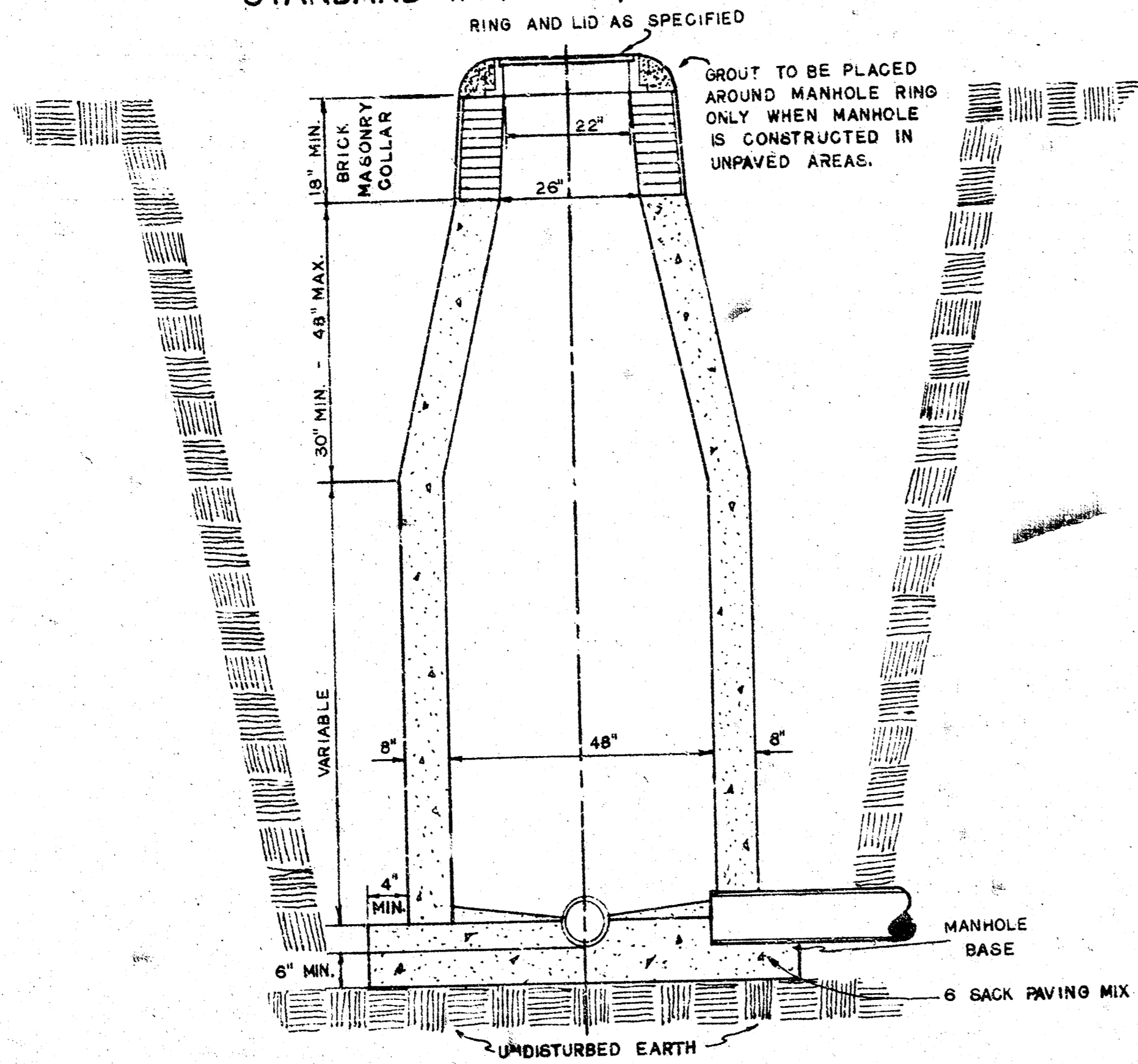


ORDINARY BEDDING METHOD FOR REINFORCED CONCRETE PIPE

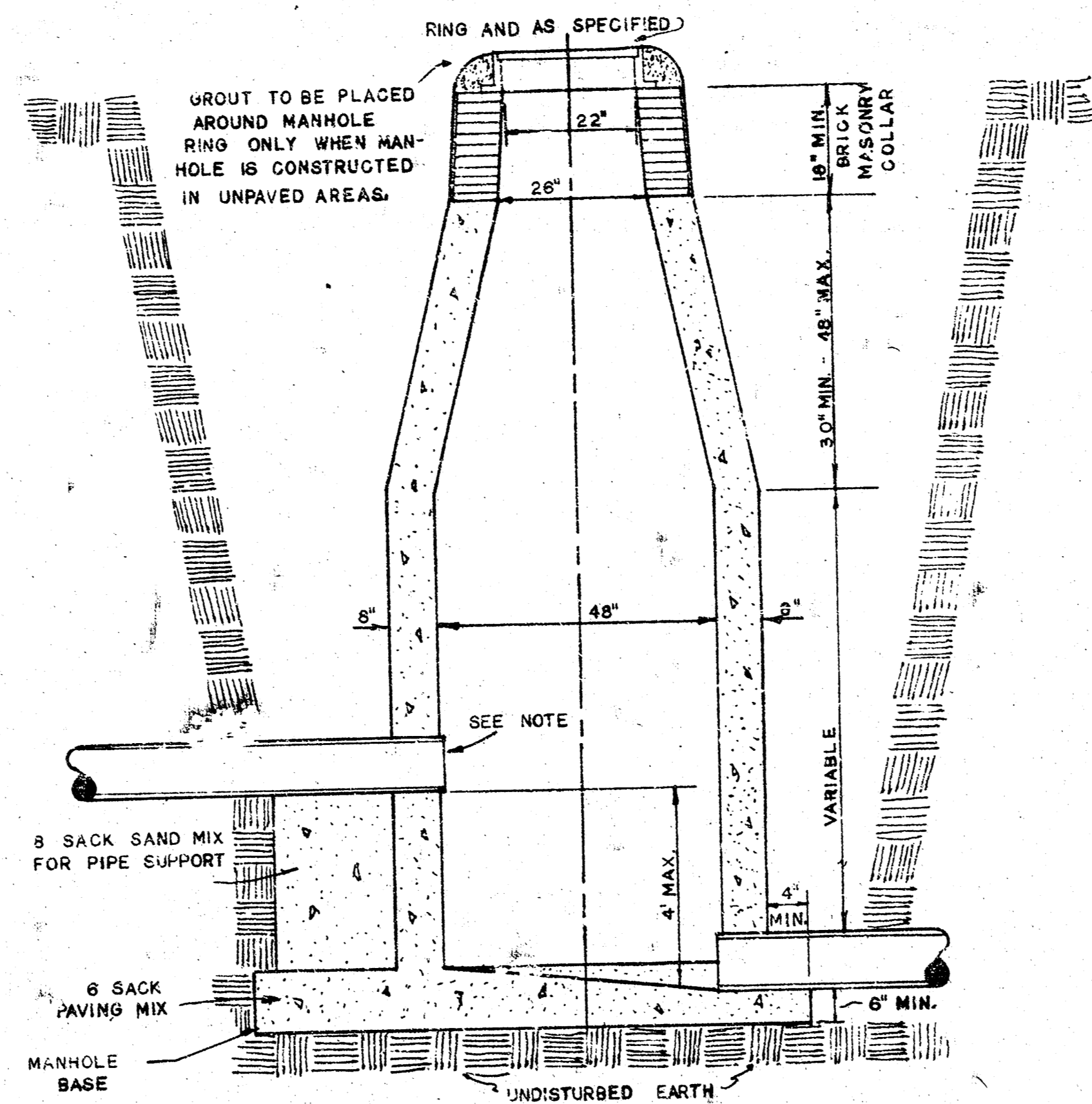
**MANHOLES**  
 THE CONCRETE USED FOR MORTAR IN MANHOLES SHALL CONTAIN 8 SACKS OF CEMENT PER CU.YD. STANDARD MANHOLES AND DROP MANHOLES, REGARDLESS OF DIAMETER, SHALL BE BID AT ONE PRICE AS STANDARD MANHOLES. SINGLE OR DOUBLE OUTSIDE DROP MANHOLES SHALL BE BID AT ONE PRICE AS OUTSIDE DROP MANHOLES. ALL MANHOLES WITH PIPES LARGER THAN 24" SHALL BE 5' DIAMETER UNLESS OTHERWISE SPECIFIED ON PLAN. ALL M.H.'S WITH PIPES 24" & SMALLER SHALL BE 4' DIA.

DETAILS OF SEWER APPURTENANCES ADOPTED AS STANDARD DESIGN BY ENGINEERING DIVISION CITY OF WICHITA, KANSAS R. W. LINN CITY ENGINEER 1964

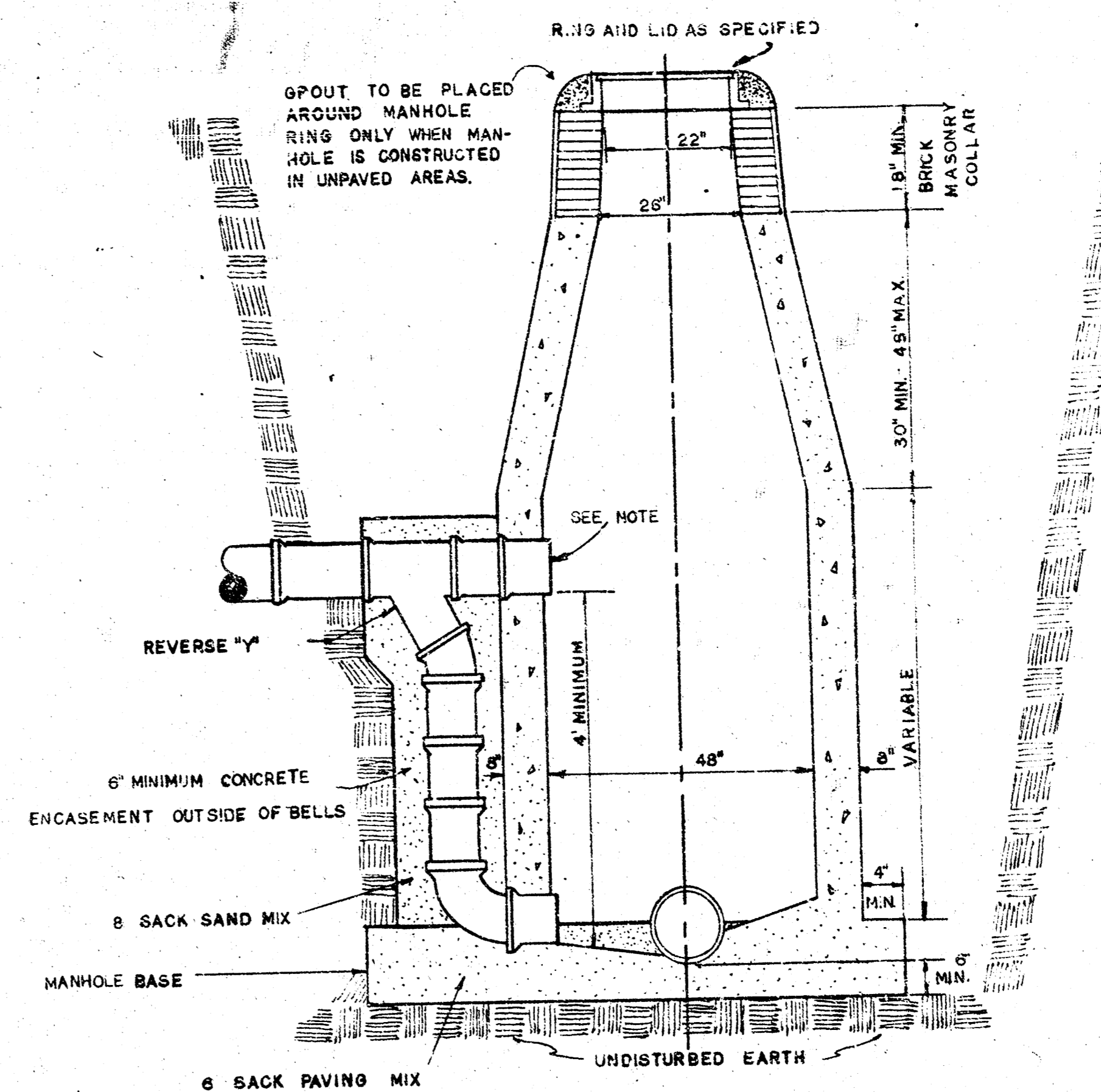
**STANDARD MANHOLE, TYPE "C"**



**DROP MANHOLE, TYPE "C"**



**OUTSIDE DROP MANHOLE, TYPE "C"**



**GENERAL NOTES**

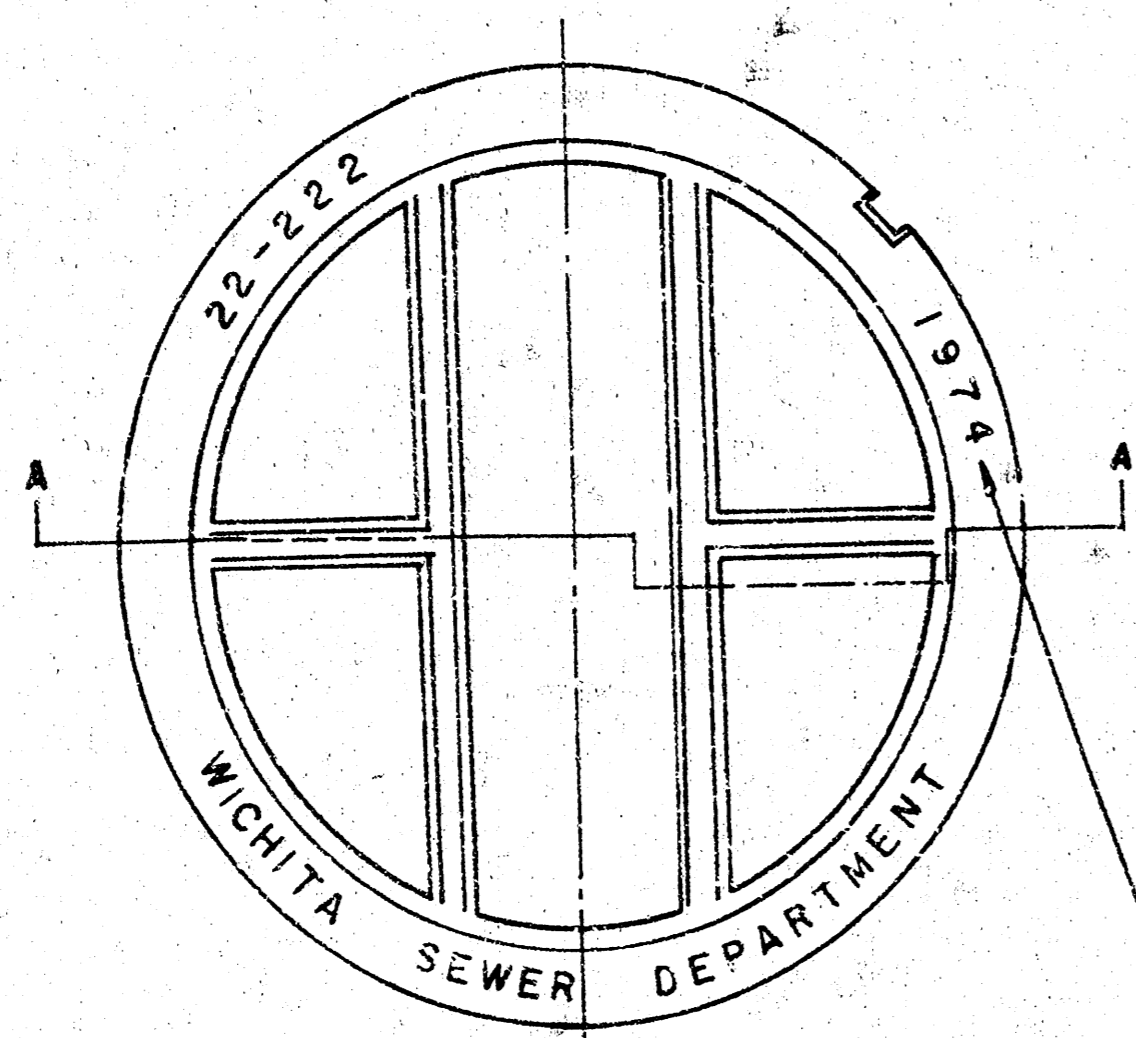
MORTAR USED IN MASONRY CONSTRUCTION SHALL CONTAIN 8 SACKS OF CEMENT PER CUBIC YARD.

STANDARD MANHOLES TYPE "C" AND STANDARD DROP MANHOLES TYPE "C" SHALL BE BID AS STANDARD MANHOLES FOR THE TYPE AND DIAMETER INDICATED.

OUTSIDE DROP MANHOLES TYPE "C" SHALL BE BID AS STANDARD OUTSIDE DROP MANHOLES FOR THE TYPE AND DIAMETER INDICATED. ALL MANHOLE DIAMETERS WILL BE 4 FT. UNLESS INDICATED OTHERWISE. MANHOLES WITH PIPE SIZES LARGER THAN 24" SHALL BE 5 FT. DIAMETER.

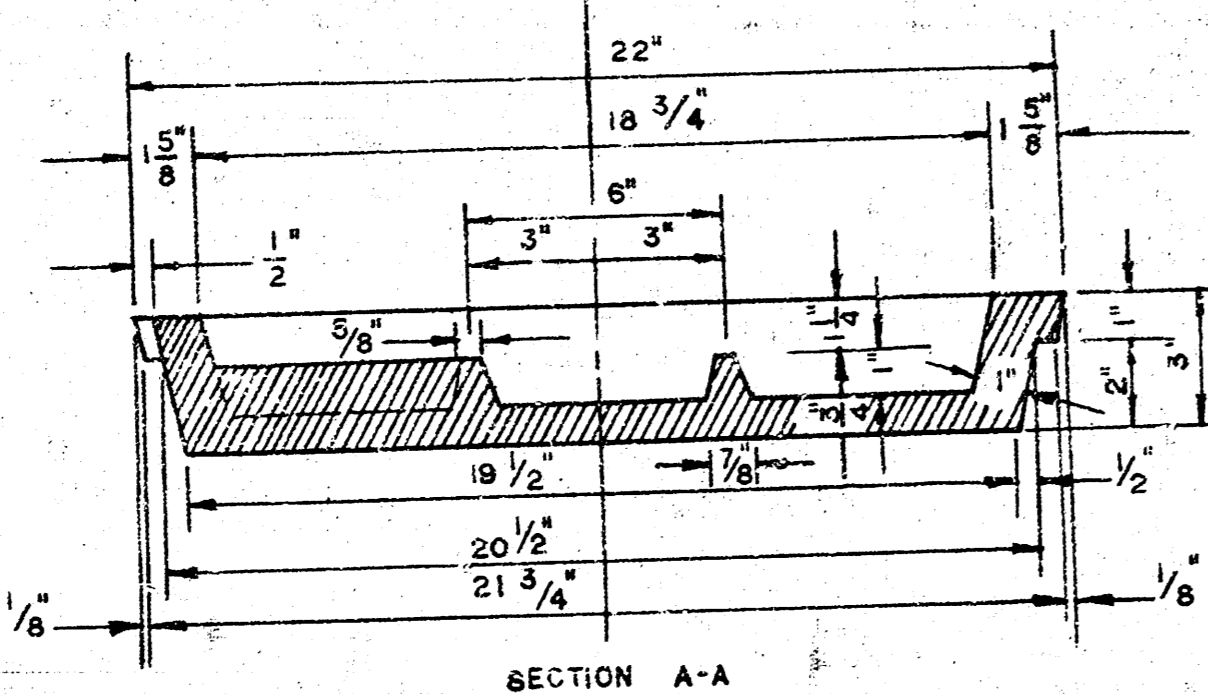
THE FLOORS OF ALL MANHOLES SHALL BE SHAPED TO INCREASE HYDRAULIC EFFICIENCY USING 8 SACK SAND MIX CONCRETE.

CAST IN PLACE CIRCULAR CONCRETE MANHOLES ARE TO BE CONSTRUCTED ONLY ON SEWERS NOT SUBJECT TO DETERIORATION OF CONCRETE DUE TO FORMATION OF HYDROGEN SULFIDE GAS AND IN LOCATIONS WHERE IT IS OBVIOUS THAT ANY ADJUSTMENT OF THE MANHOLE TOP ELEVATION WHICH MAY BE NECESSARY WILL NOT REQUIRE MODIFICATION OF THE CONCRETE BARREL.

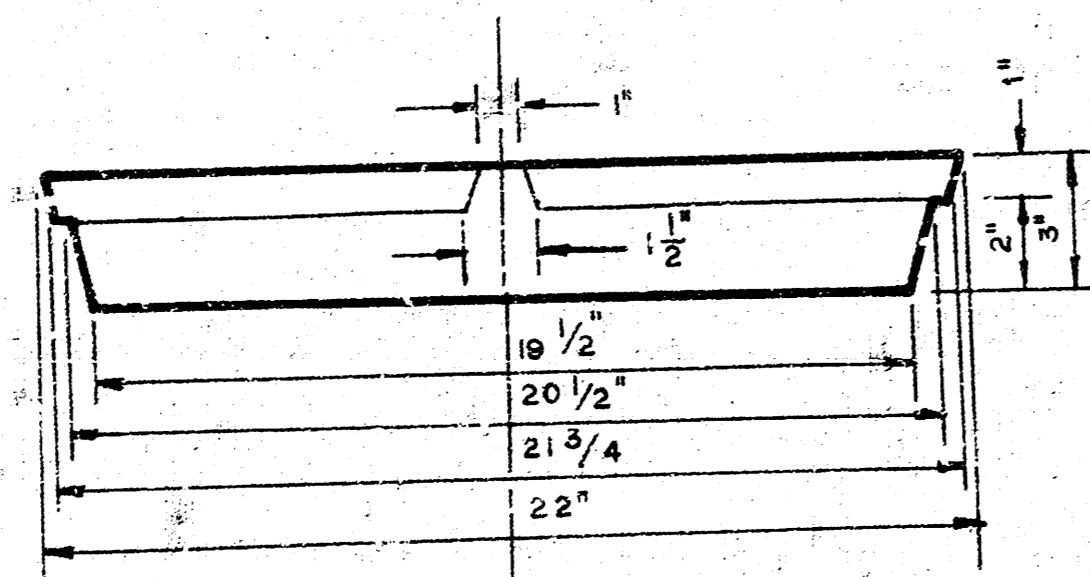


**MANHOLE COVER**

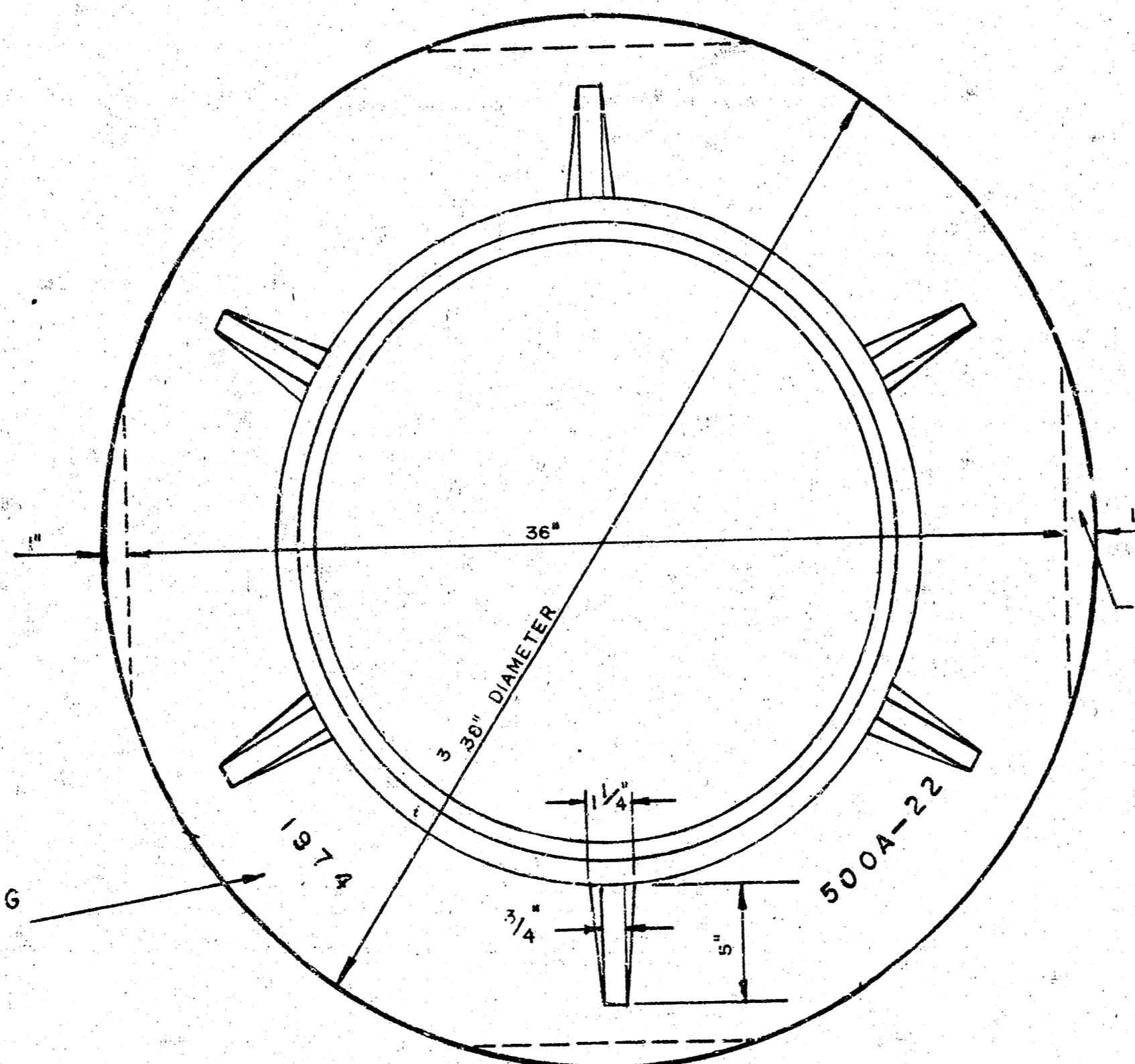
WEIGHT 110 LBS.



**MANHOLE COVER**



**MANHOLE COVER**

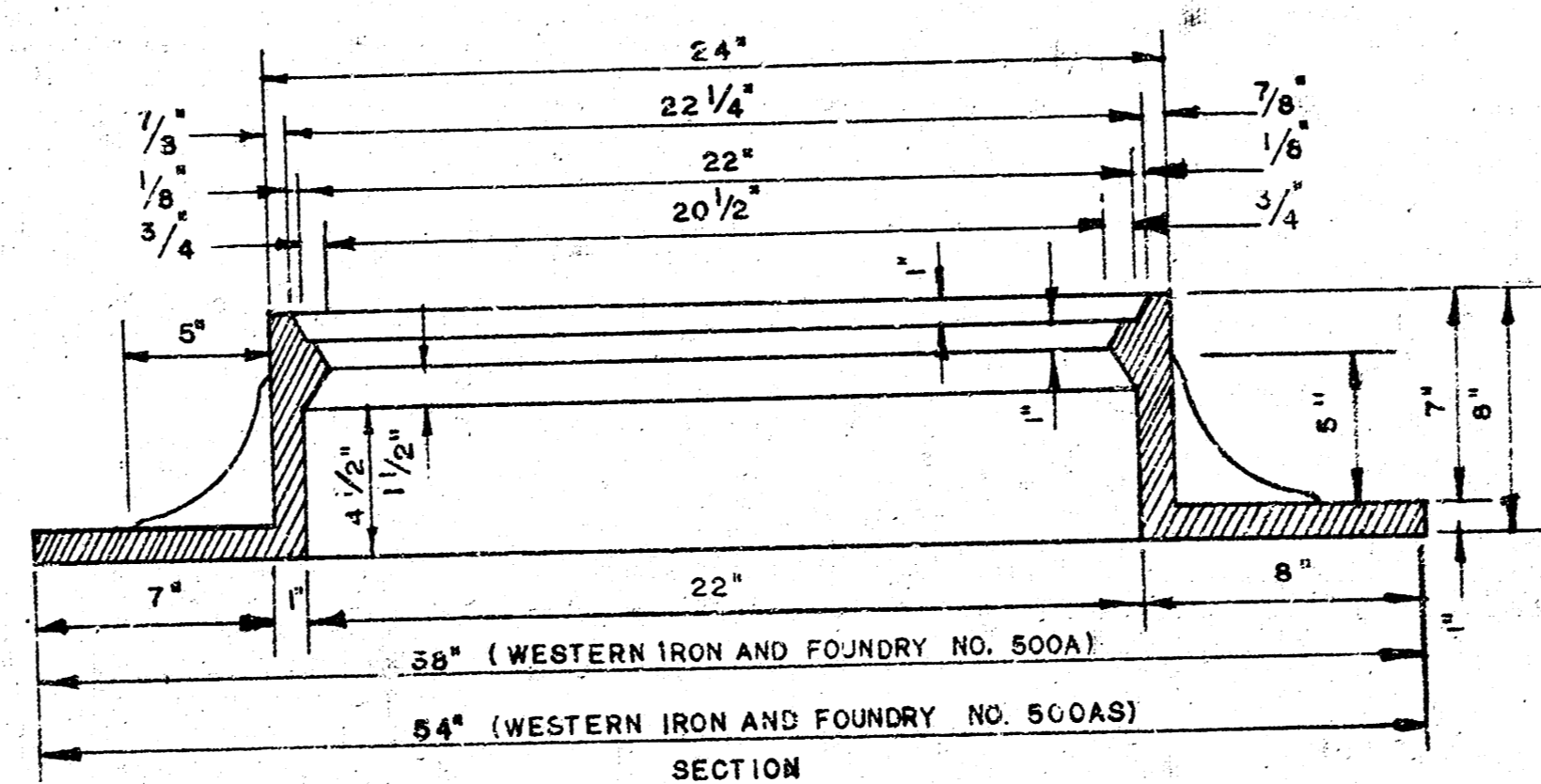


**MANHOLE RING**

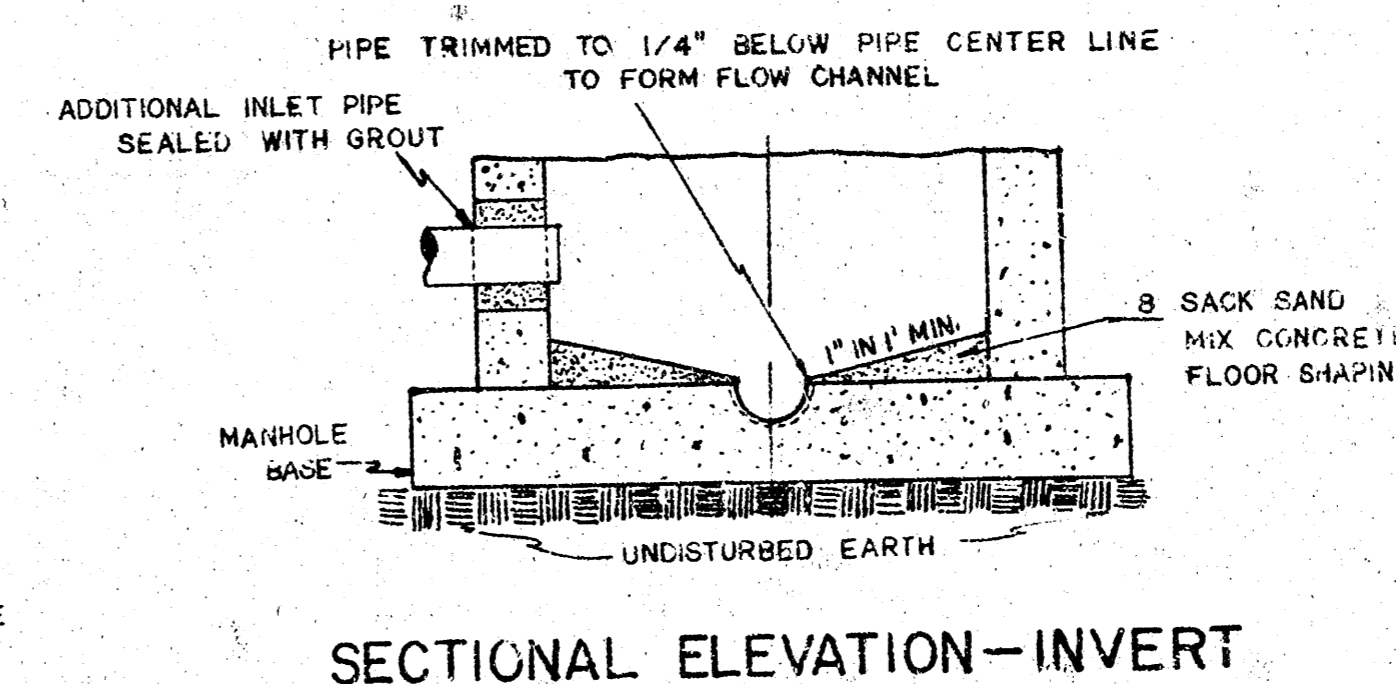
WEIGHT 325 LBS. RING NO. 500A  
WEIGHT 800 LBS. RING NO. 500AS

OUTSIDE CIRCUMFERENCE OF COVER AND THE INNER FACE AND SEAT OF RING TO BE MACHINE FIT.

YEAR CASTING IS MADE



**MANHOLE RING**



**SECTIONAL ELEVATION-INVERT**

NOTE: OPENING FOR INLET PIPE CUT IN MANHOLE WALL AND PIPE GROUTED IN PLACE WITH NON-SHRINKING GROUT. EXTERIOR OF COMPLETED CONNECTION TO BE SEALED WITH APPROVED COATING.

DETAILS OF  
**SEWER APPURTENANCES**  
ADOPTED AS STANDARD DESIGN  
BY  
ENGINEERING DIVISION  
CITY OF WICHITA, KANSAS  
R. W. LINN CITY ENGINEER  
1974