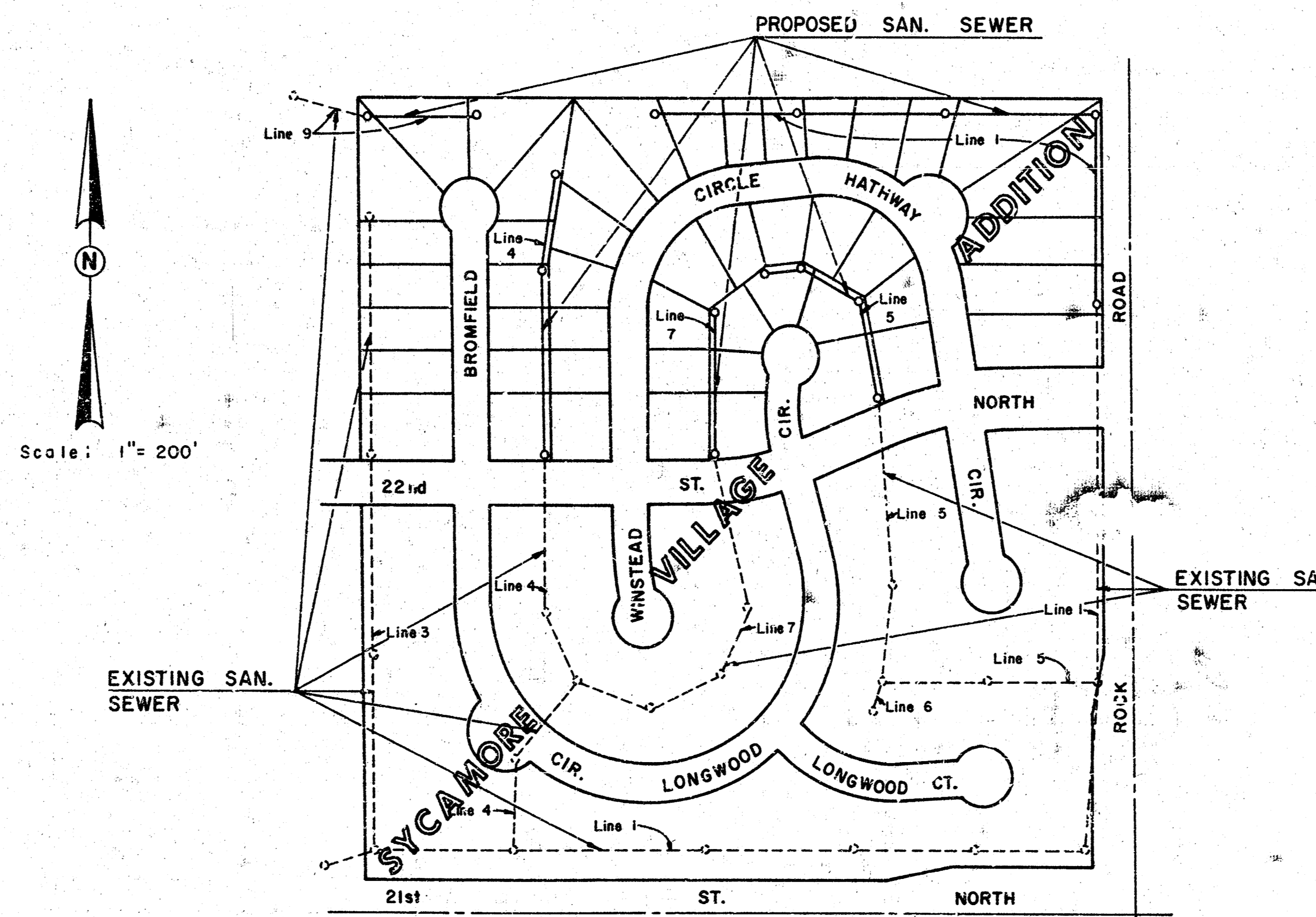


LATERAL 7, MAIN 6, S.S. NO. 23

PROJECT NO. DBKL 576007

CITY OF WICHITA, KANSAS
 R.W. LINN CITY ENGINEER
 FEBRUARY 1976

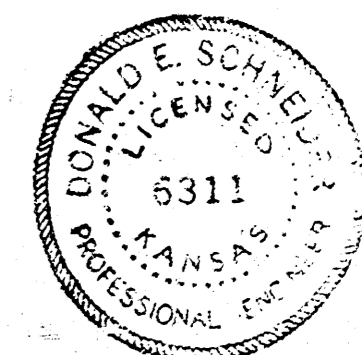


LOCATION MAP

INDEX TO DRAWINGS

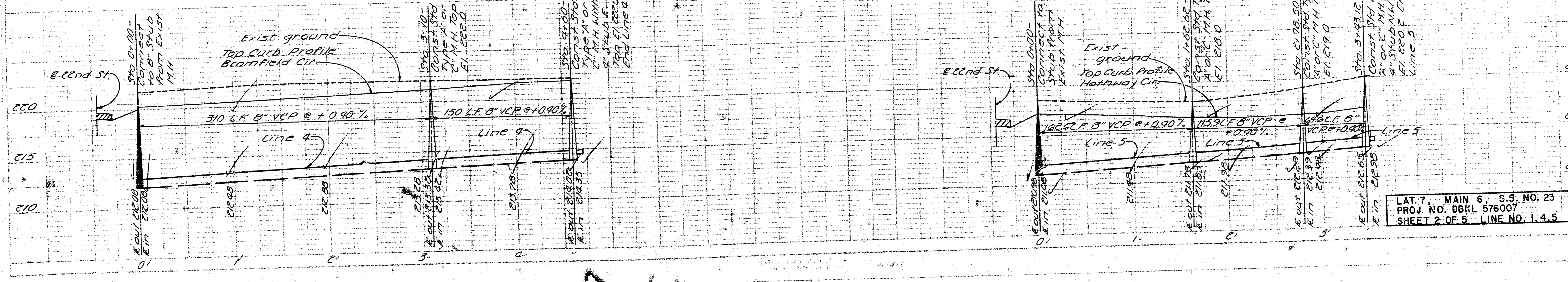
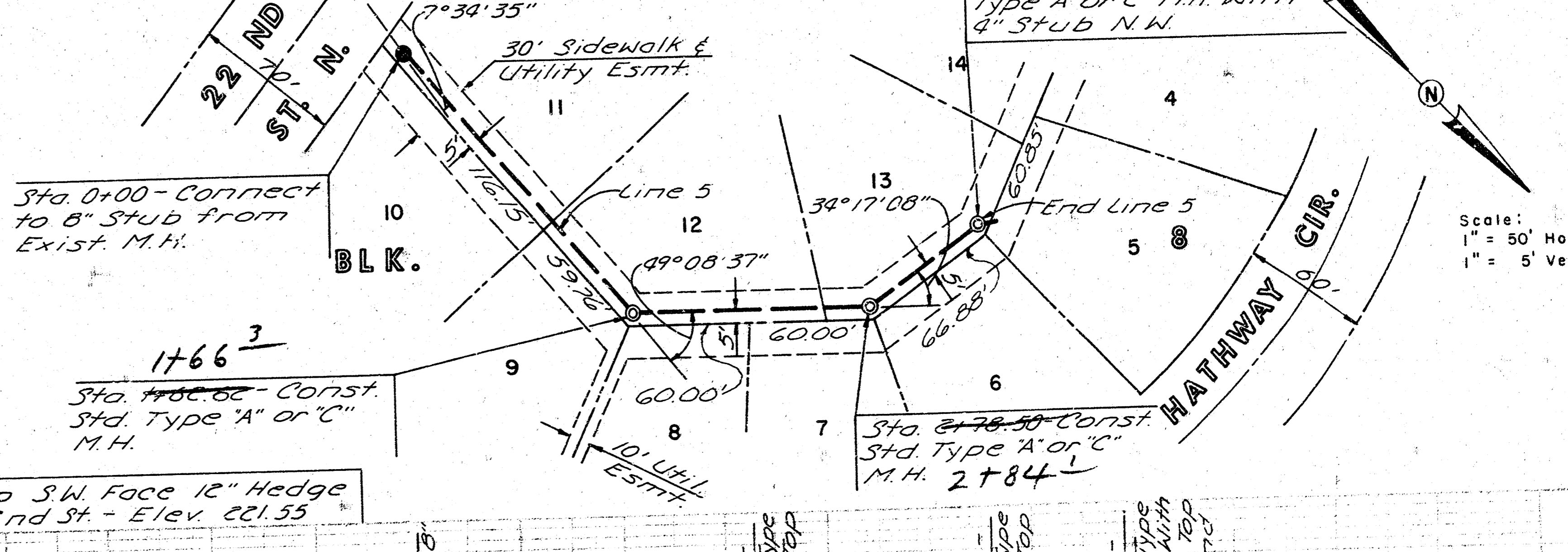
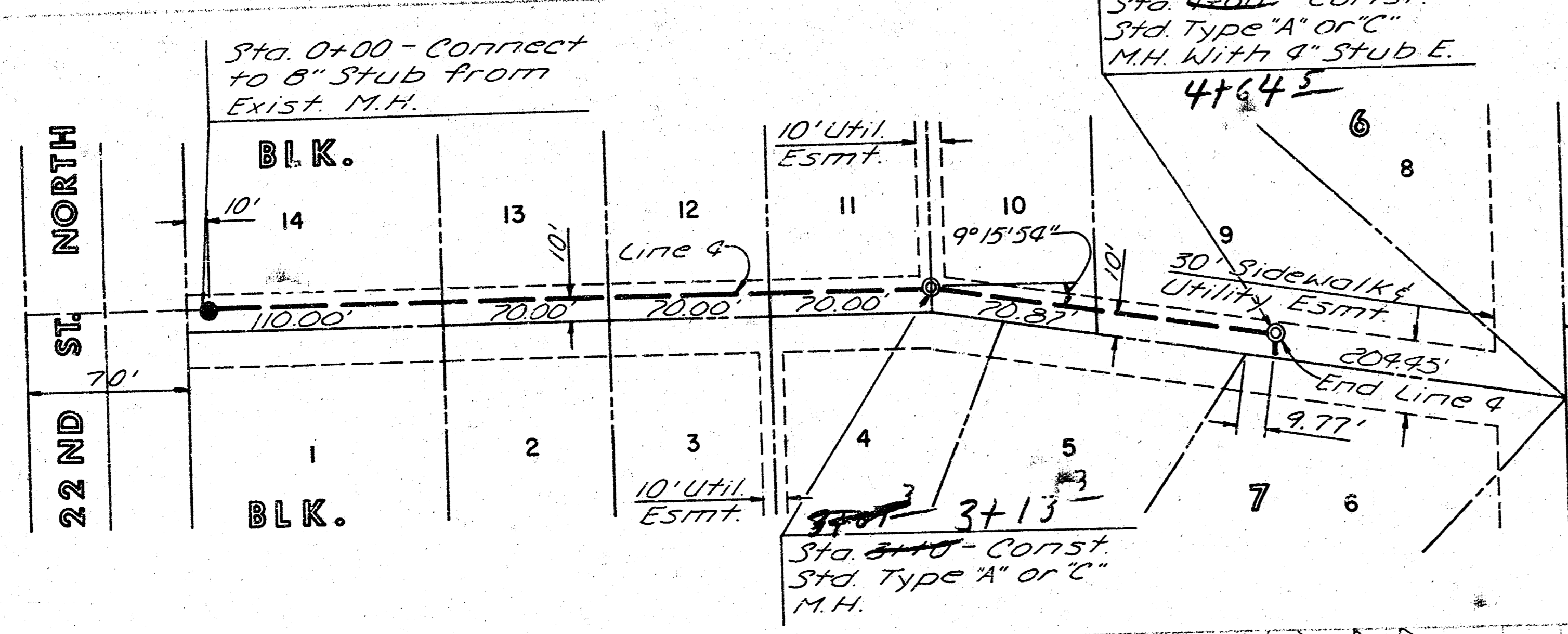
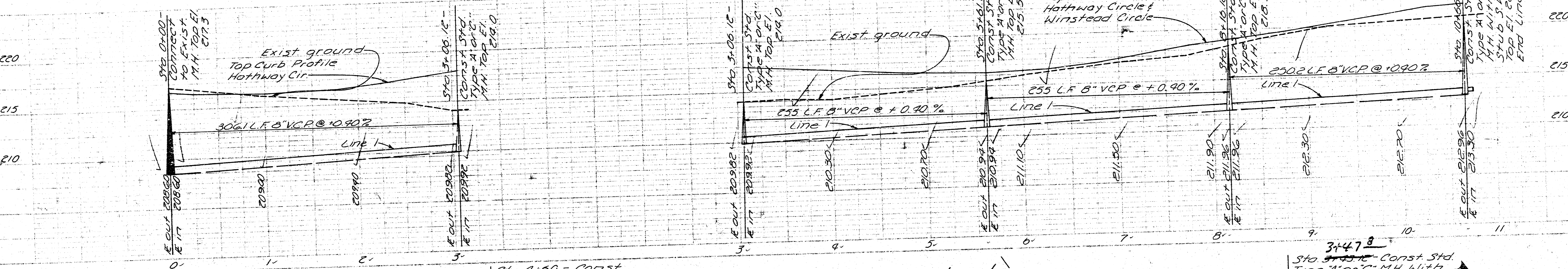
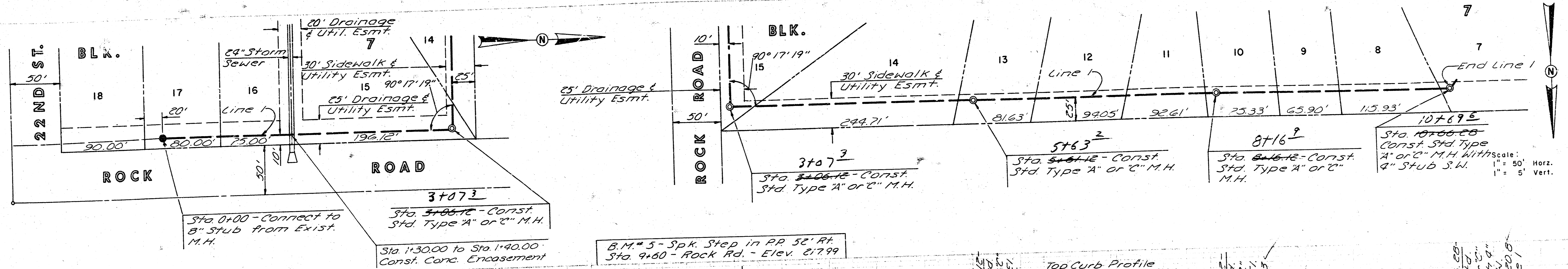
SHEET NO.	DESCRIPTION
1	TITLE & LOCATION MAP
2	LINE 1, 4, 5
3	LINE 7, 9
4-5	SEWER APPURTENANCES

NOTE: A.B.S. COMPOSITE PIPE MAY BE USED AS AN ALTERNATE TO CLAY PIPE.

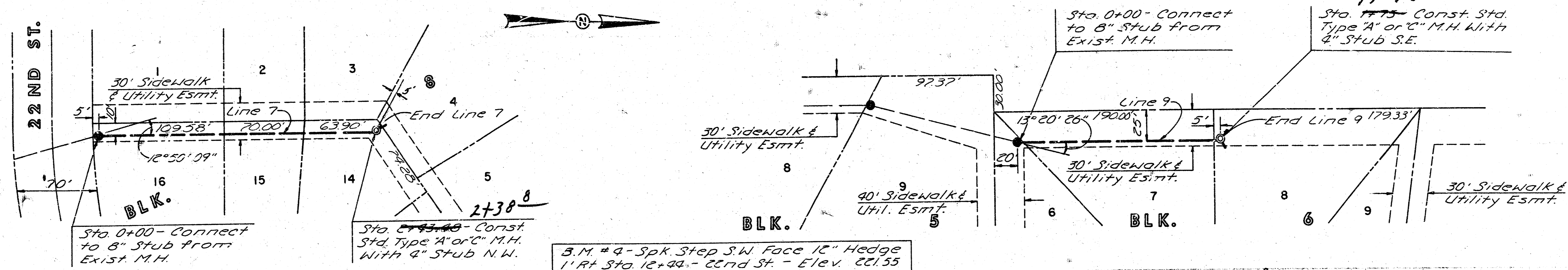


As built 1-28-77

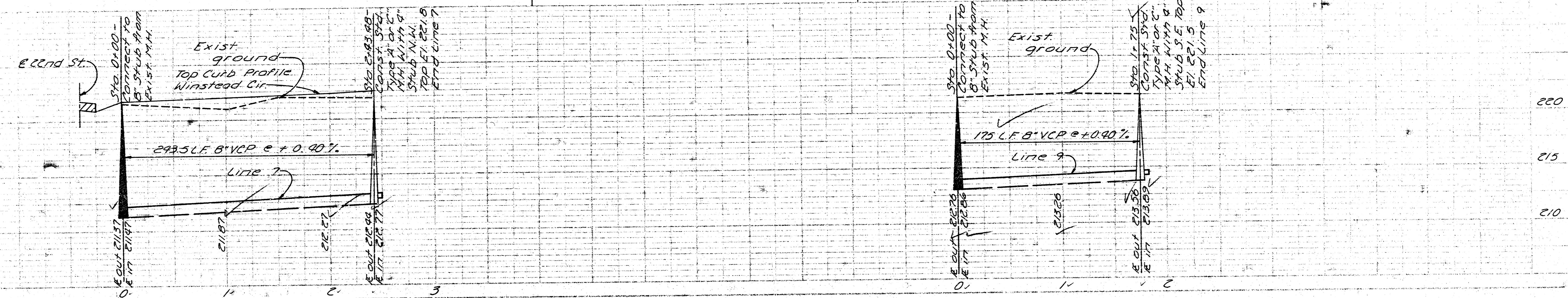
DESIGN	SYCAMORE VILLAGE ADDITION WICHITA, KANSAS	TITLE SHEET	SHEET 1 OF 5
DR. BY			
CK. BY			
DATE			
JOB NO.	VAN DOREN · HAZARD · STALLINGS ARCHITECTS-ENGINEERS · WICHITA, KANSAS		



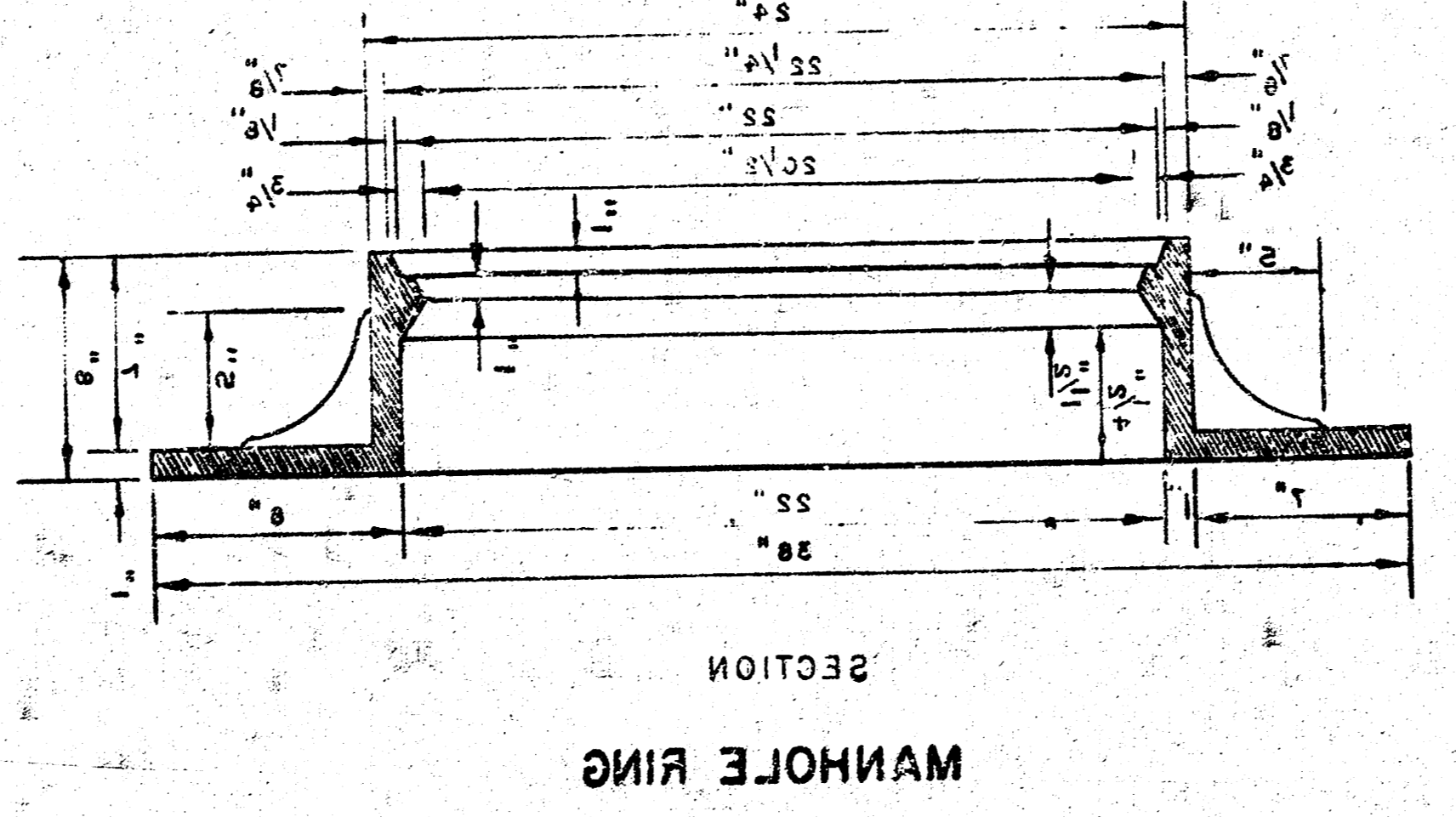
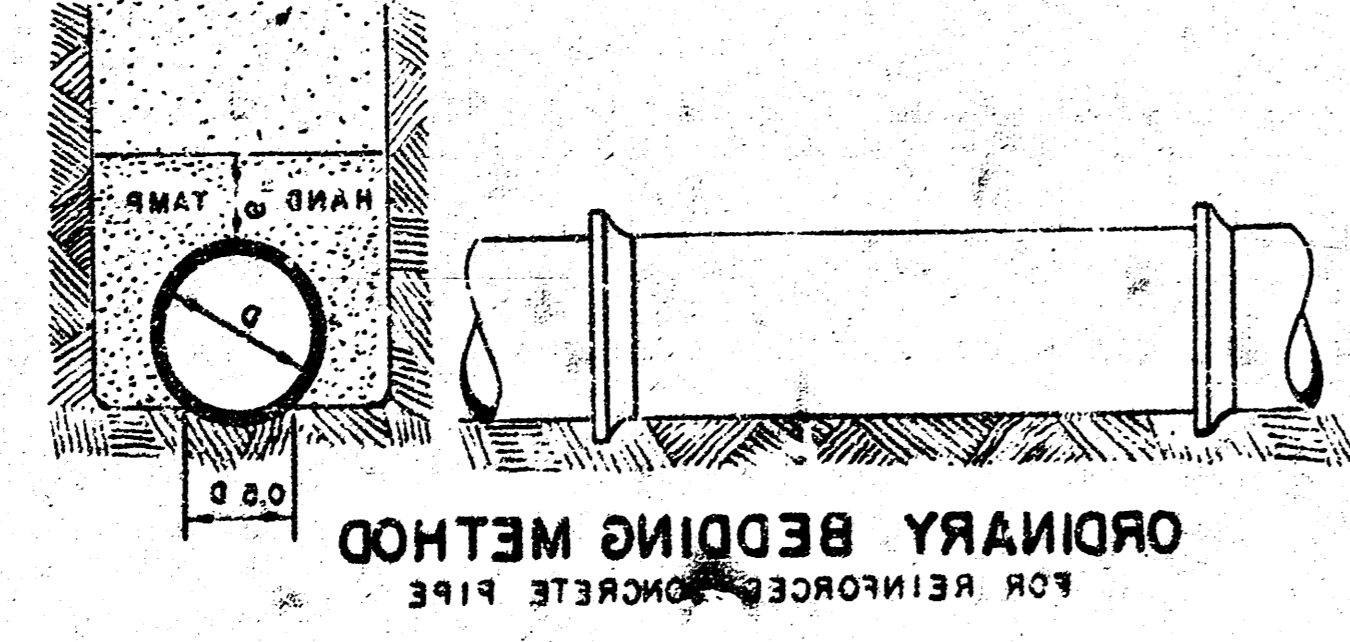
LAT. 7, MAIN 6, S.S. NO. 23
 PROJ. NO. DBKL 576007
 SHEET 2 OF 5 - LINE NO. 1.4.5



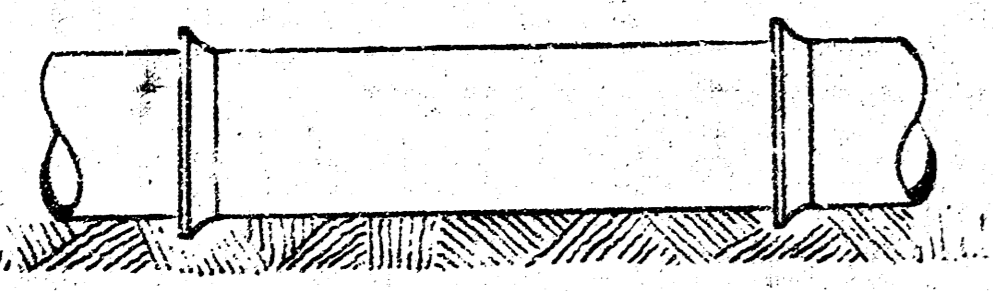
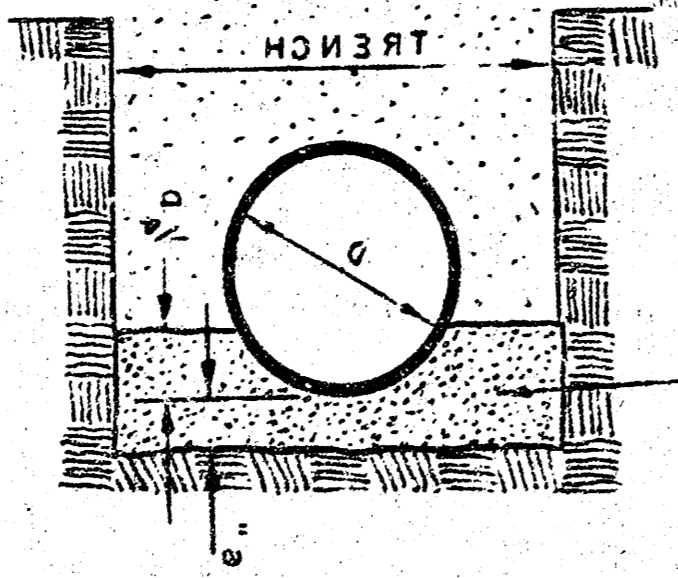
Scale:
1" = 50' Horiz.
1" = 5' Vert.



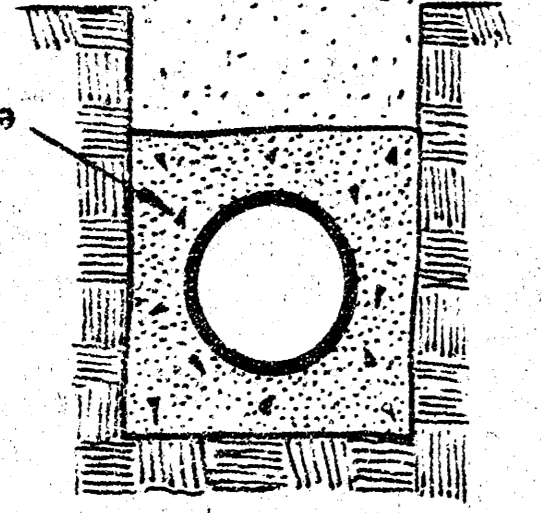
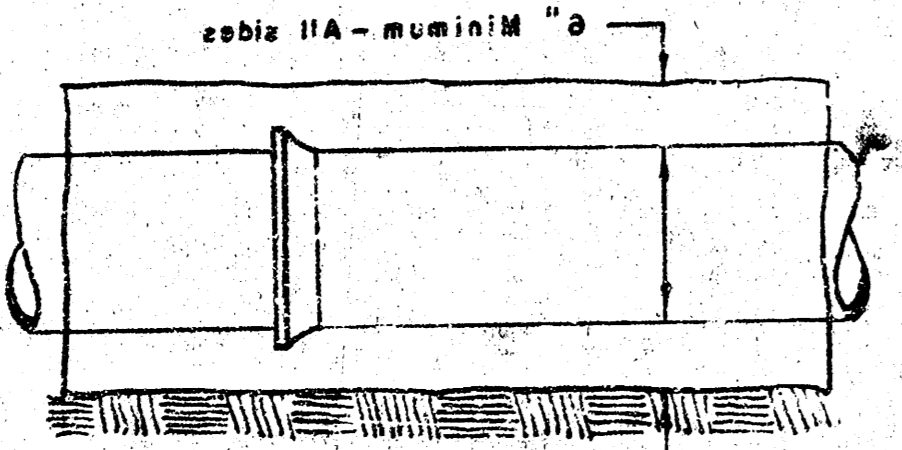
1924
 CITY ENGINEER
 R. W. LINN
 CITY OF WICHITA, KANSAS
 ENGINEERING DIVISION
 BY
 ADOPTED AS STANDARD DESIGN
 SEWER APURTANCES
 DETAILS OF



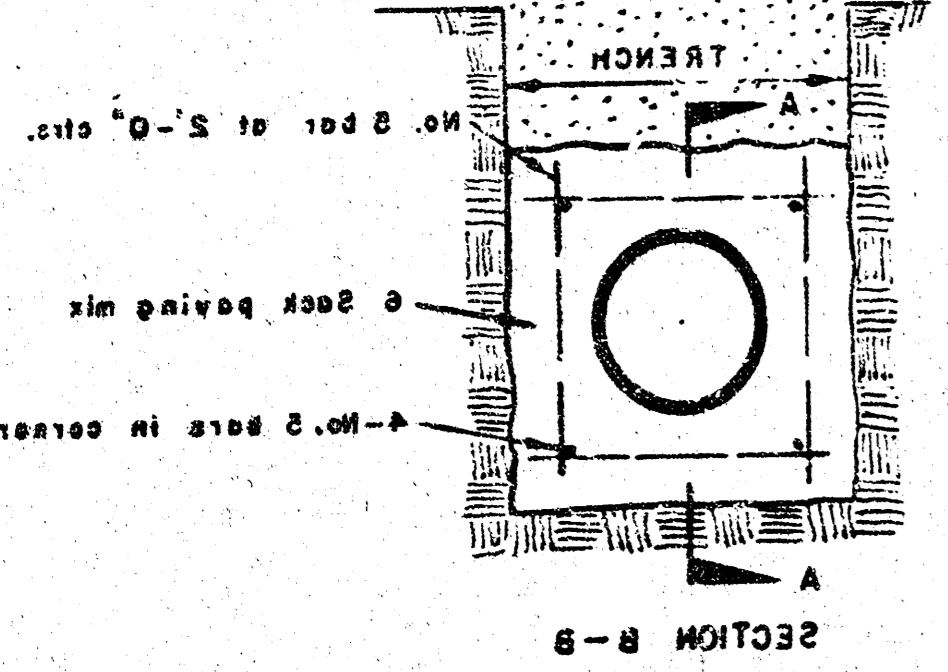
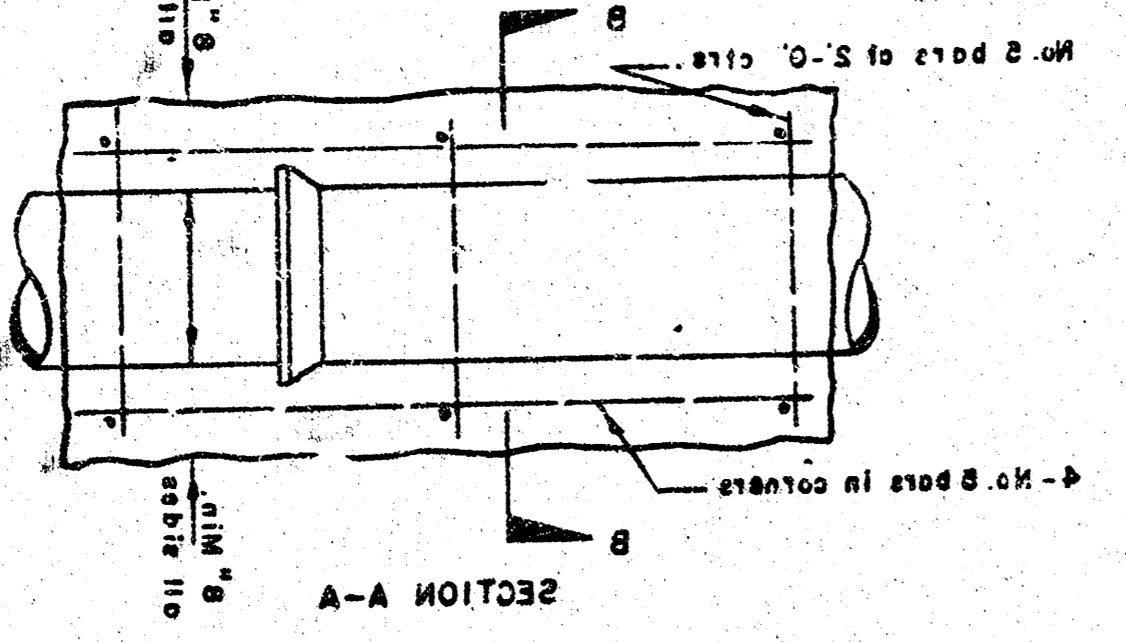
DETAIL OF CONCRETE CRADLE



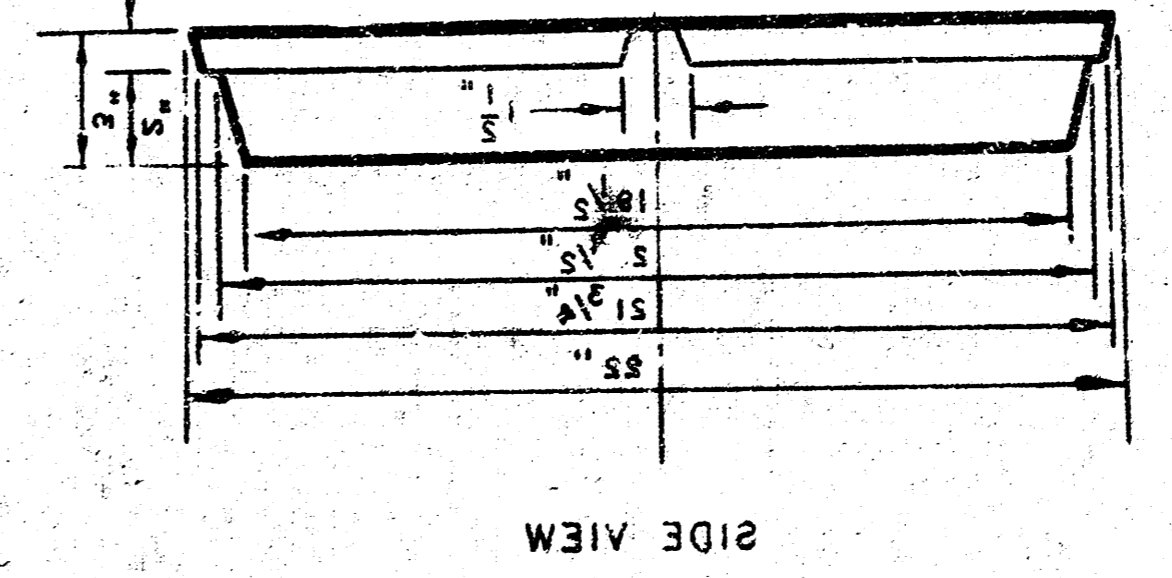
CONCRETE ENCASMENT FOR COVER



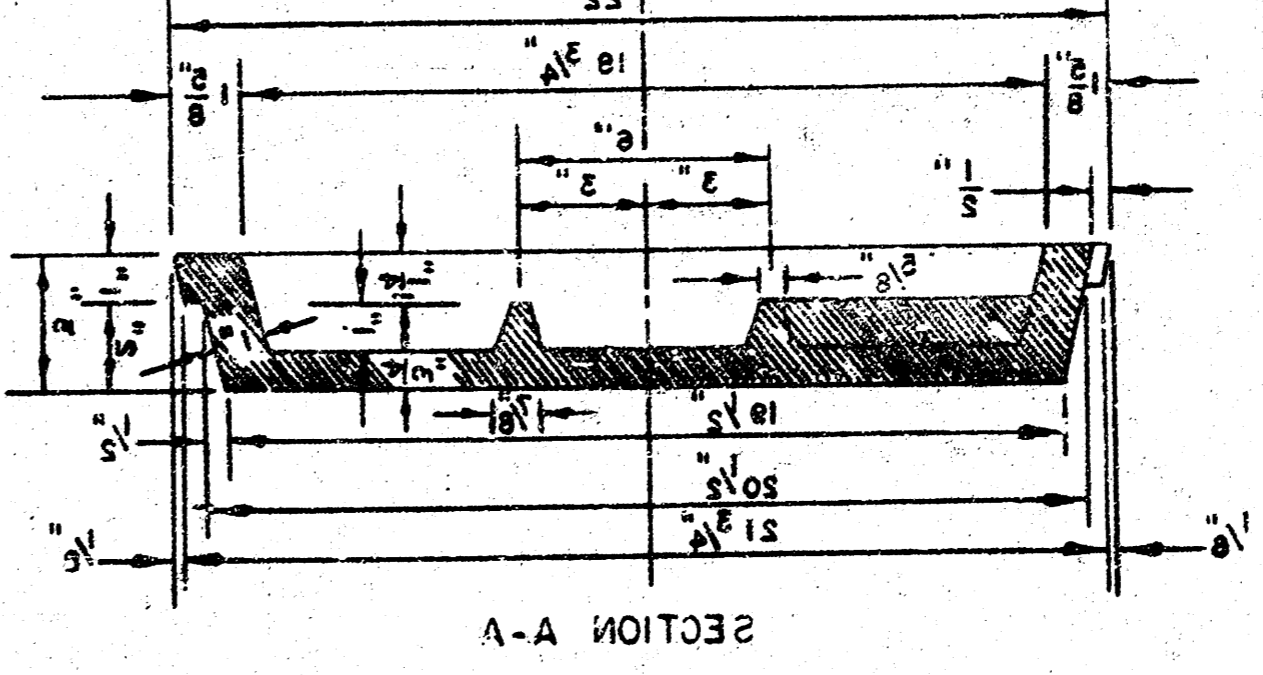
REINFORCED CONCRETE ENCASMENT FOR STRENGTH



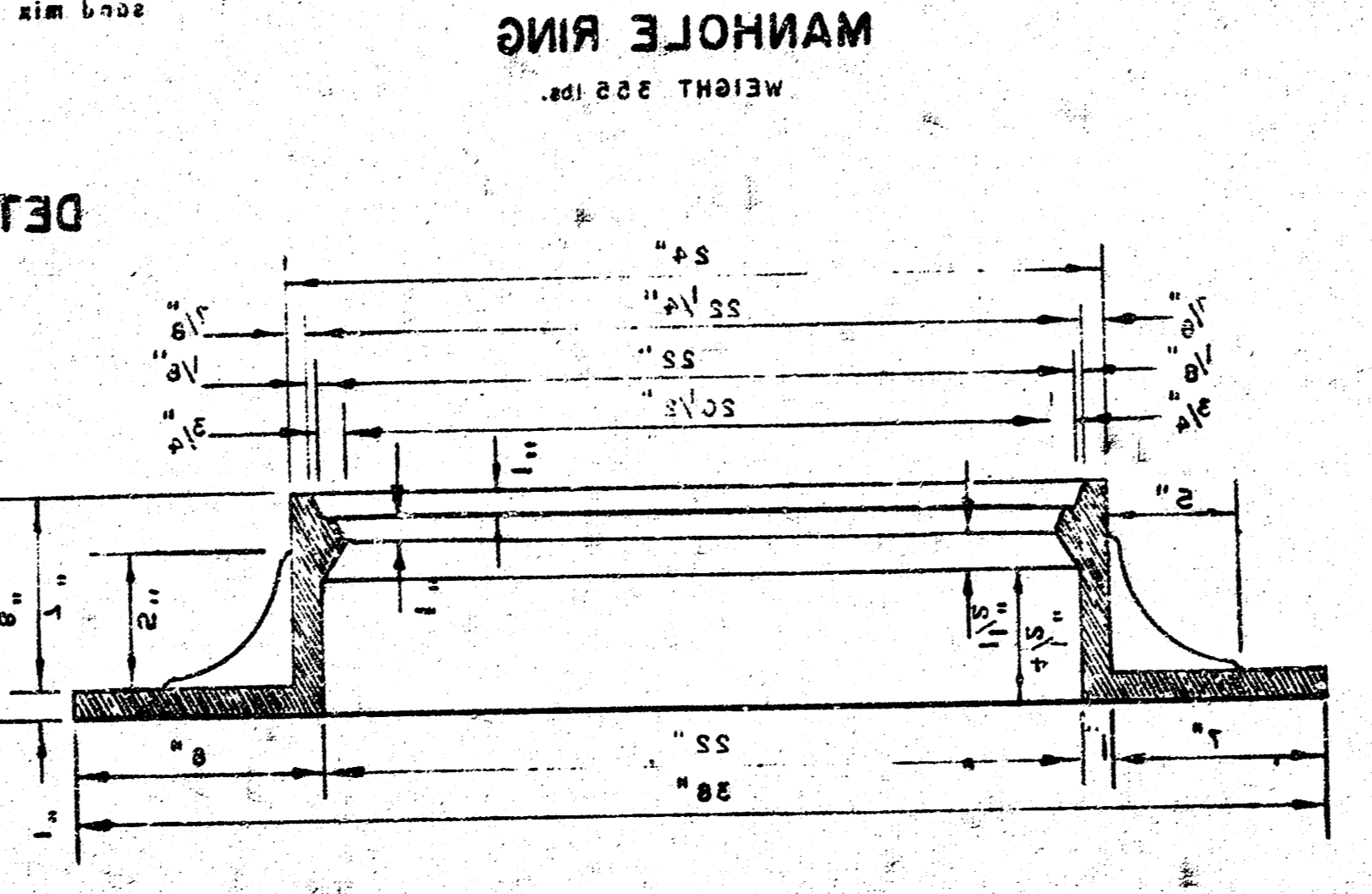
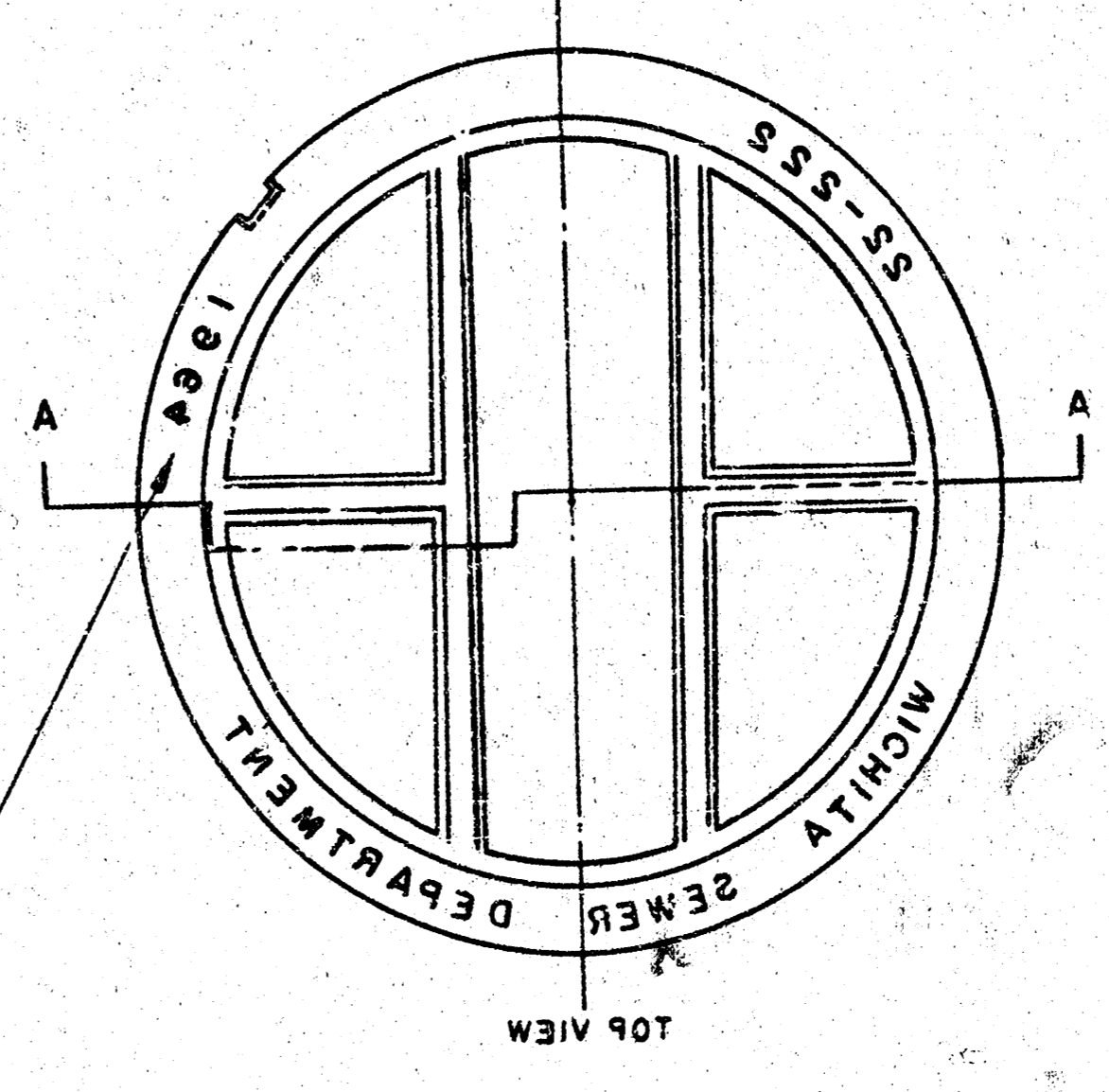
MANHOLE COVER



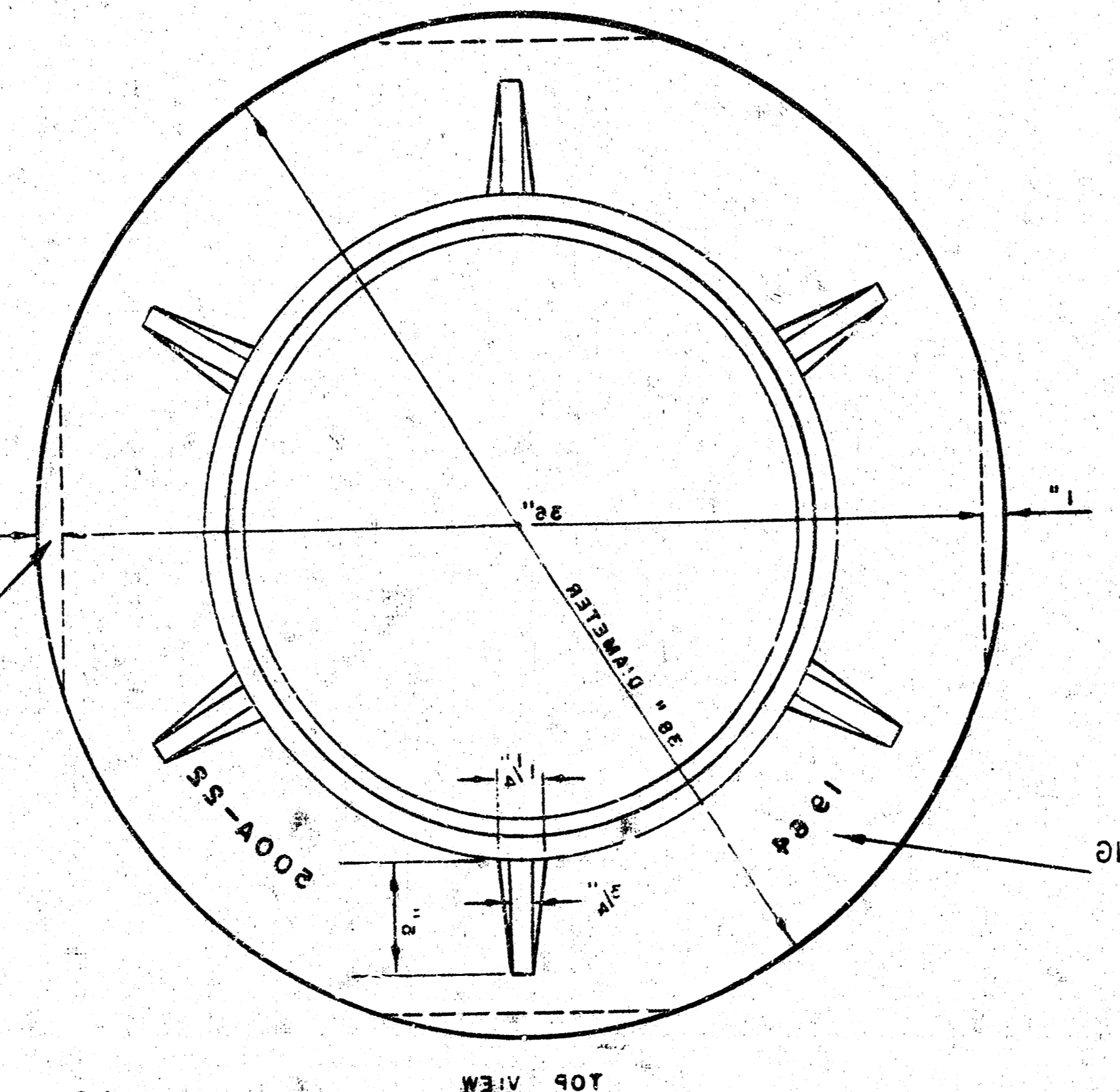
MANHOLE COVER



MANHOLE COVER



MANHOLE RING

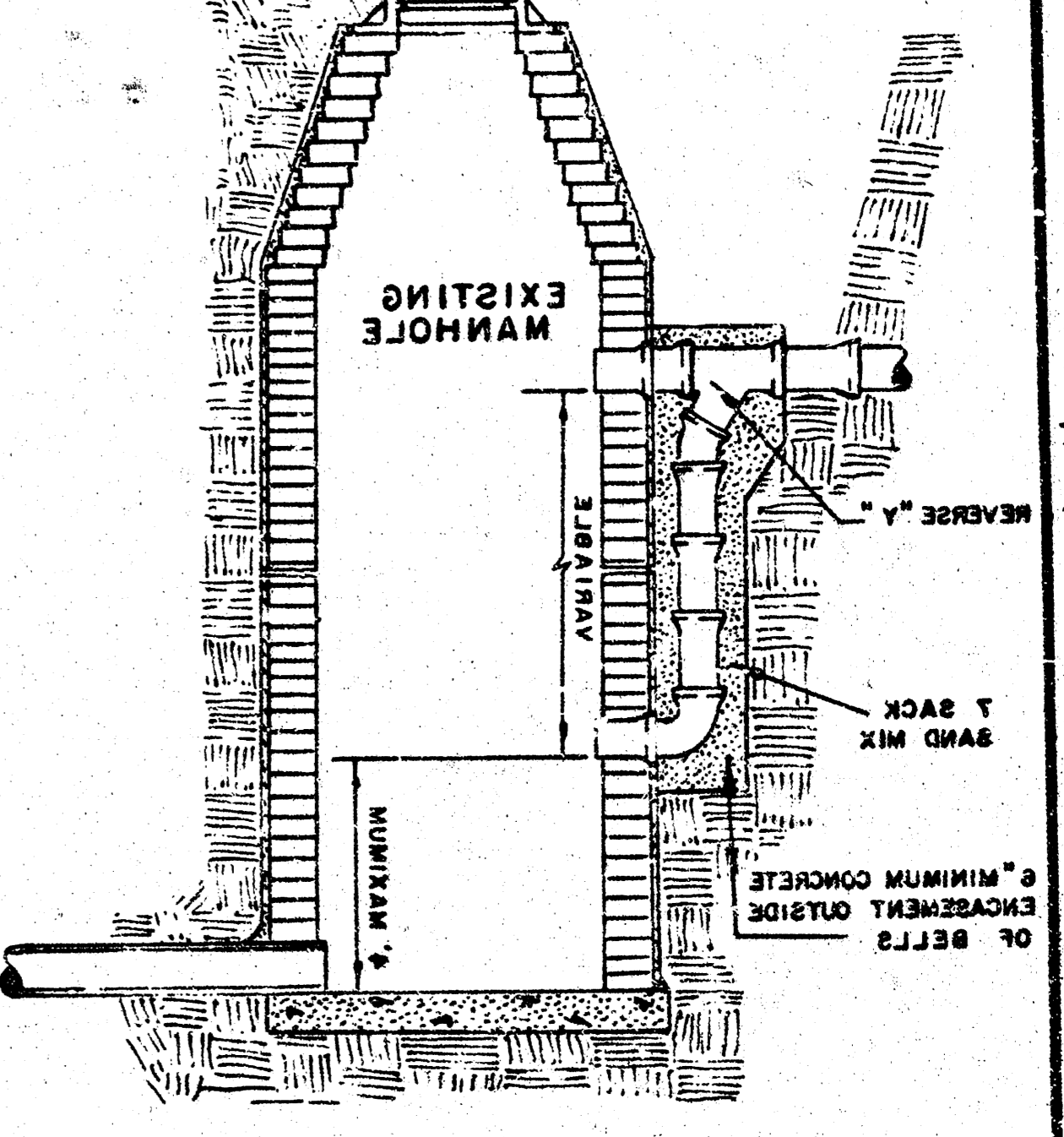


MANHOLE RING

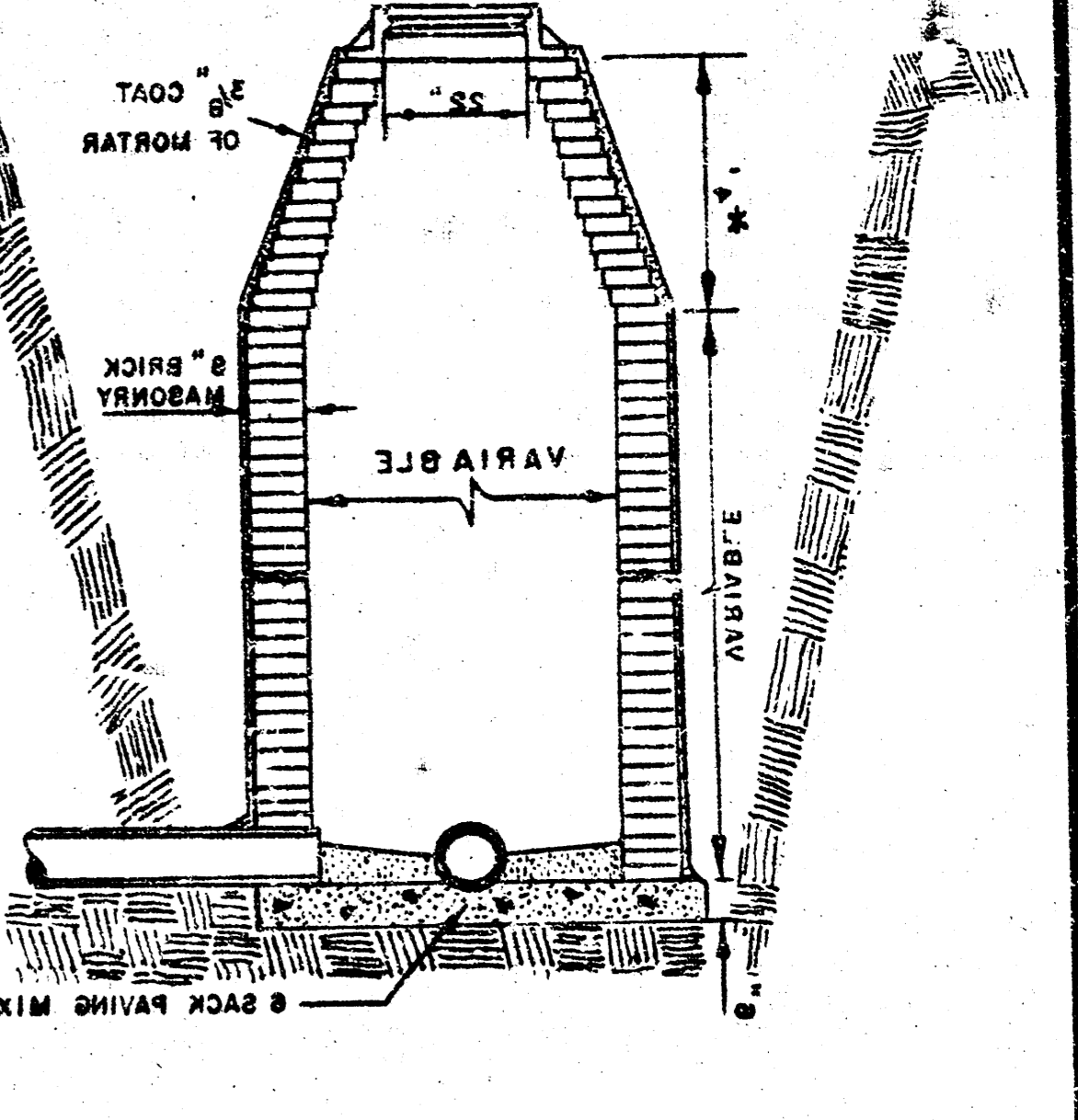
* DRAW = 6' ON 2' DIA. M.H.

MANHOLES
 WITH PIPES 24" & SMALLER SHALL BE 4' DIA.
 OTHERS SPECIFIED ON PLAN. ALL M.H.'S
 SHALL BE 5' DIAMETER UNLESS
 ALL MANHOLES WITH PIPES LARGER
 THAN 24" SHALL BE 5' DIAMETER UNLESS
 PRICE AS OUTSIDE DROP MANHOLES.
 SINGLE OR DOUBLE OUTSIDE
 STANDARD MANHOLES.
 SHALL BE BID AT ONE PRICE AS
 MANHOLES, REGARDLESS OF DIAMETER.
 STANDARD MANHOLES AND DROP
 MANHOLES SHALL CONTAIN 8 SACKS OF
 CEMENT PER CUBIC YARD.
 THE CONCRETE USED FOR MORTAR IN

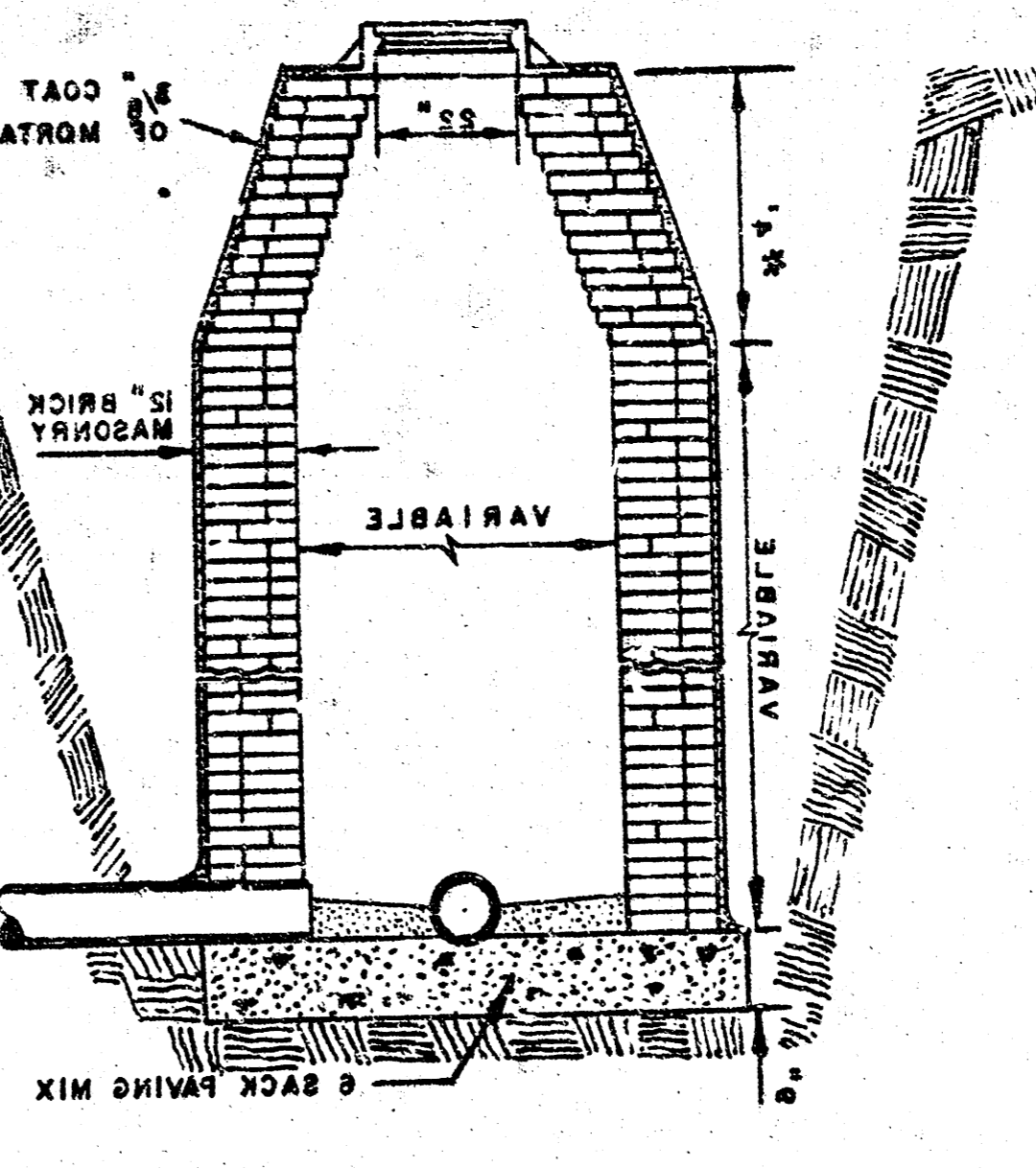
DETAIL OF DROP STACK FOR EXISTING MANHOLES IN GROUND WATER



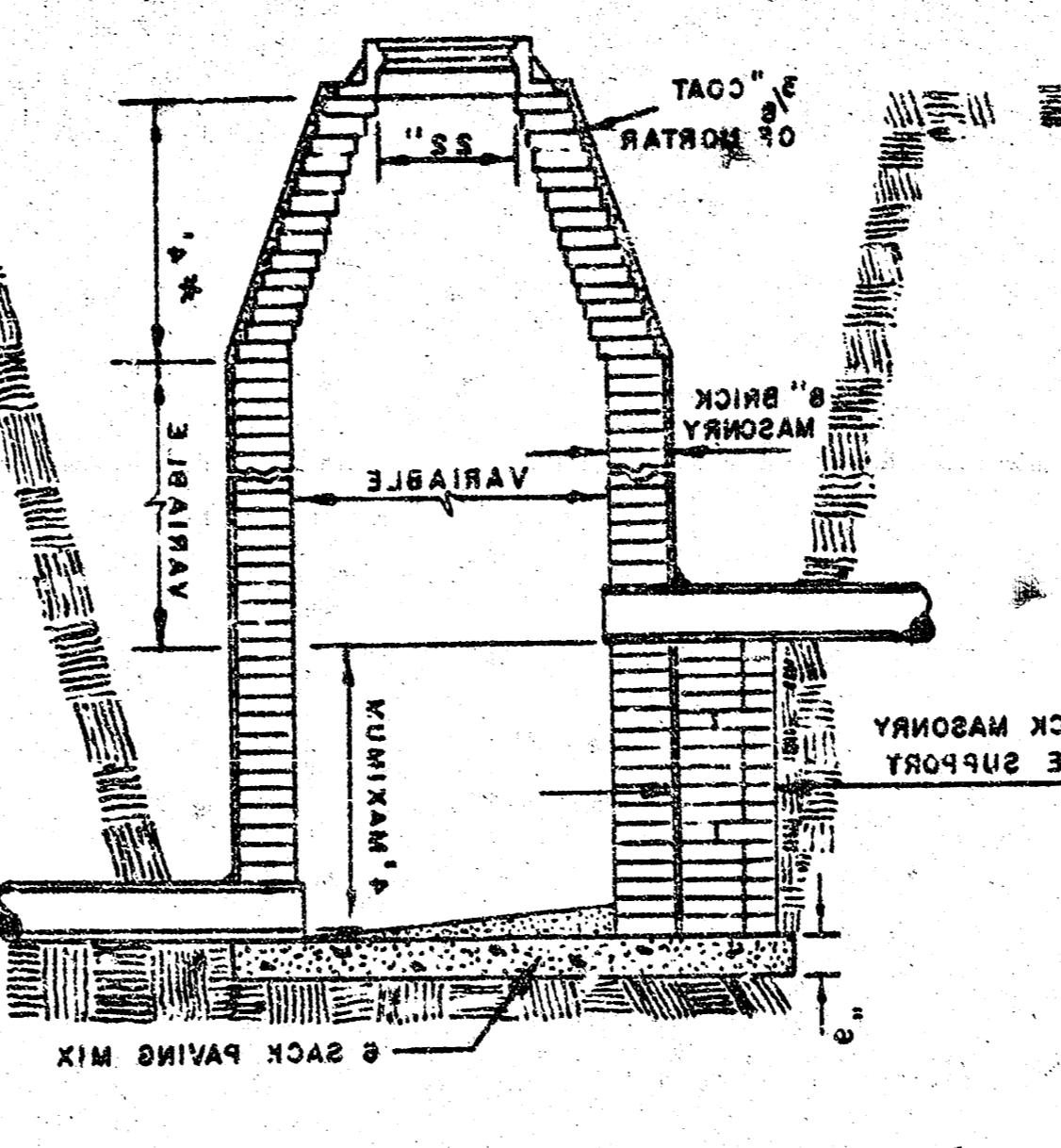
STANDARD MANHOLE TYPE 'A'



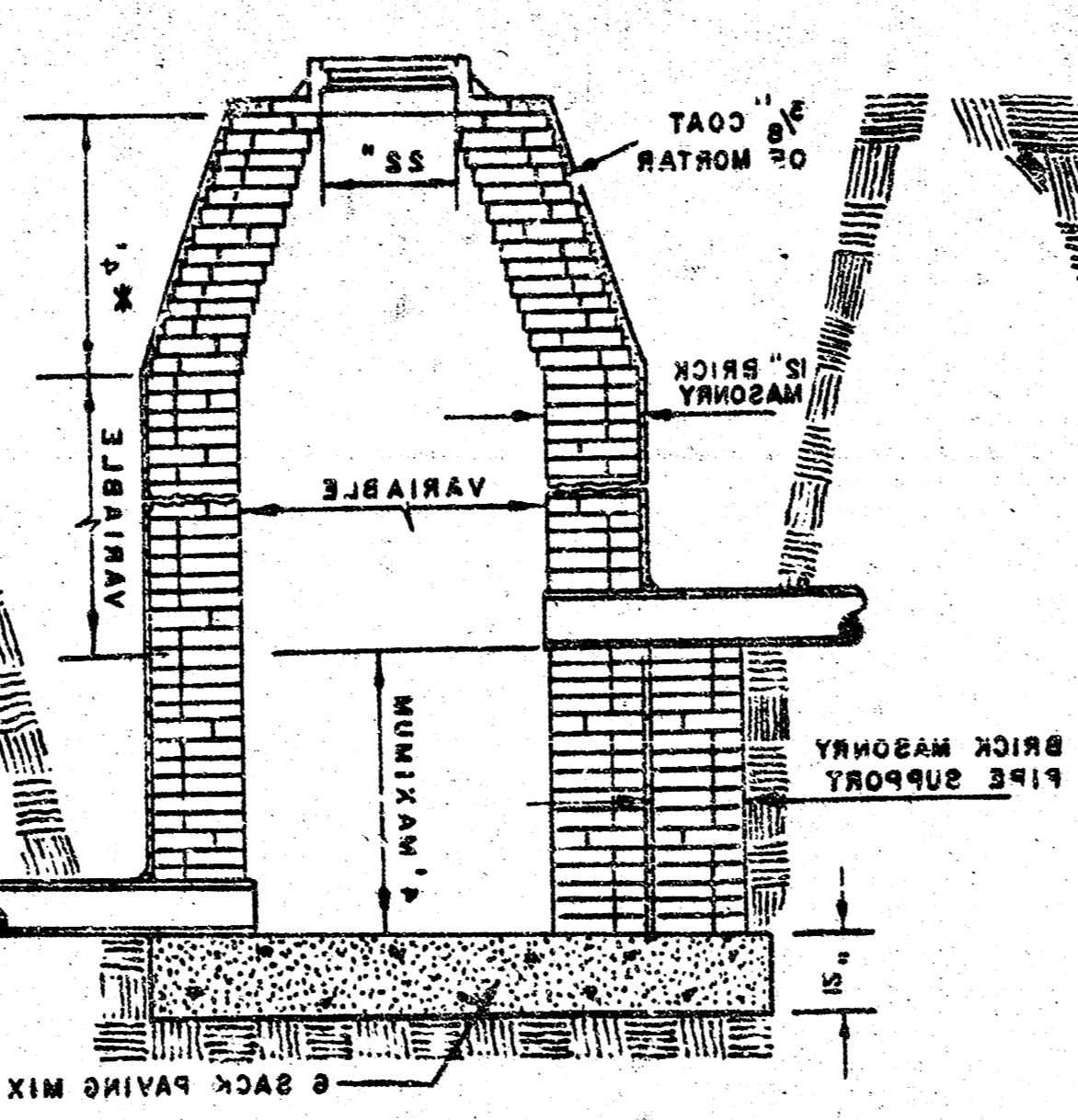
STANDARD MANHOLE TYPE 'B'



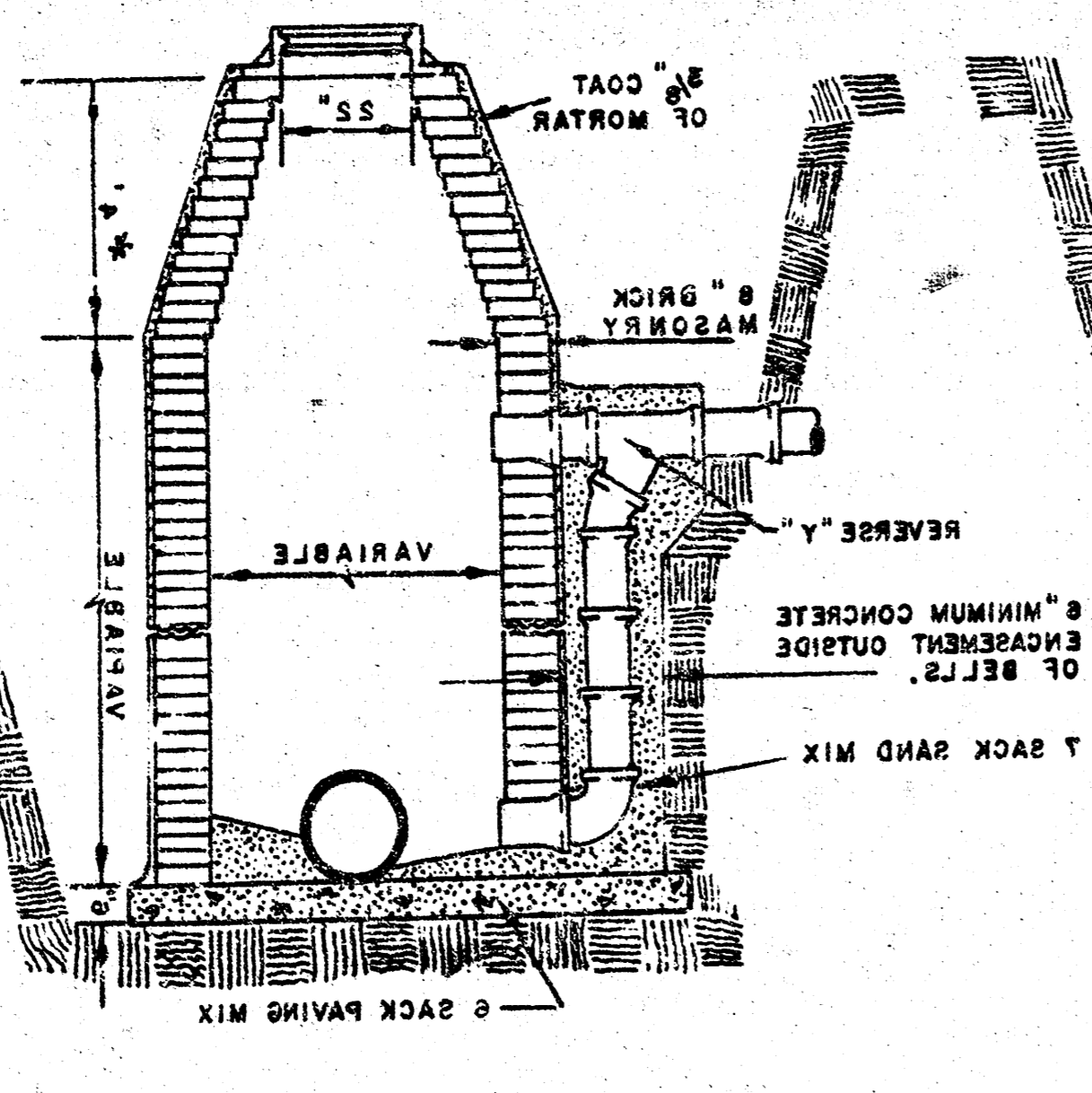
DROP MANHOLE TYPE 'A'



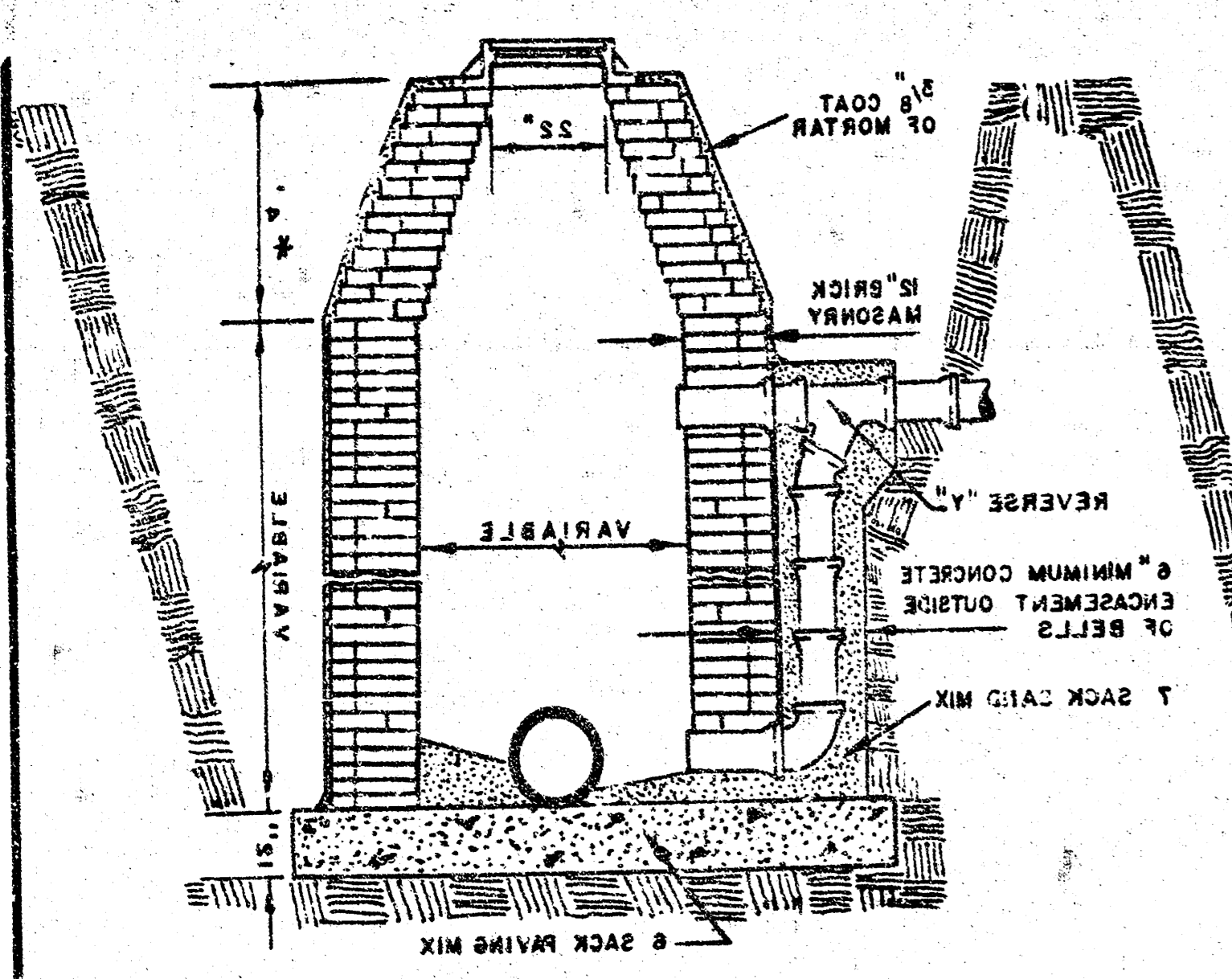
DROP MANHOLE TYPE 'B'



OUTSIDE DROP MANHOLE TYPE 'A'

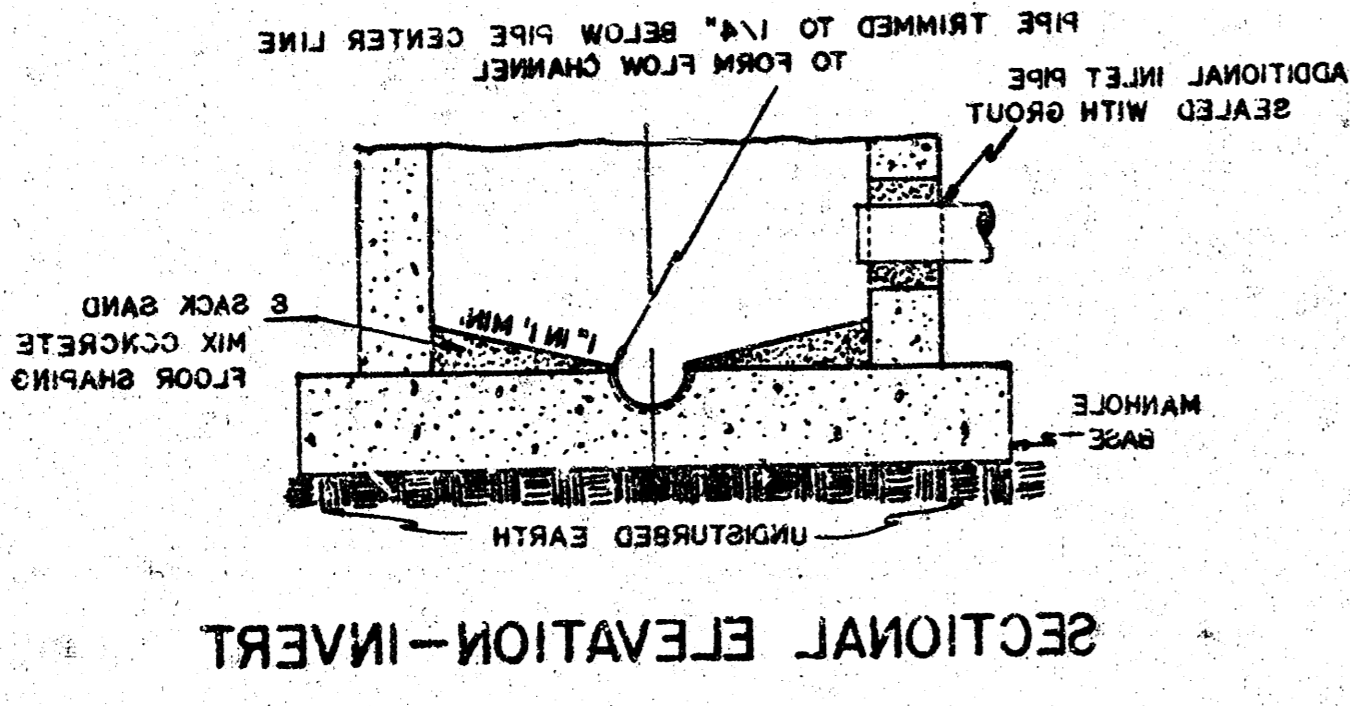
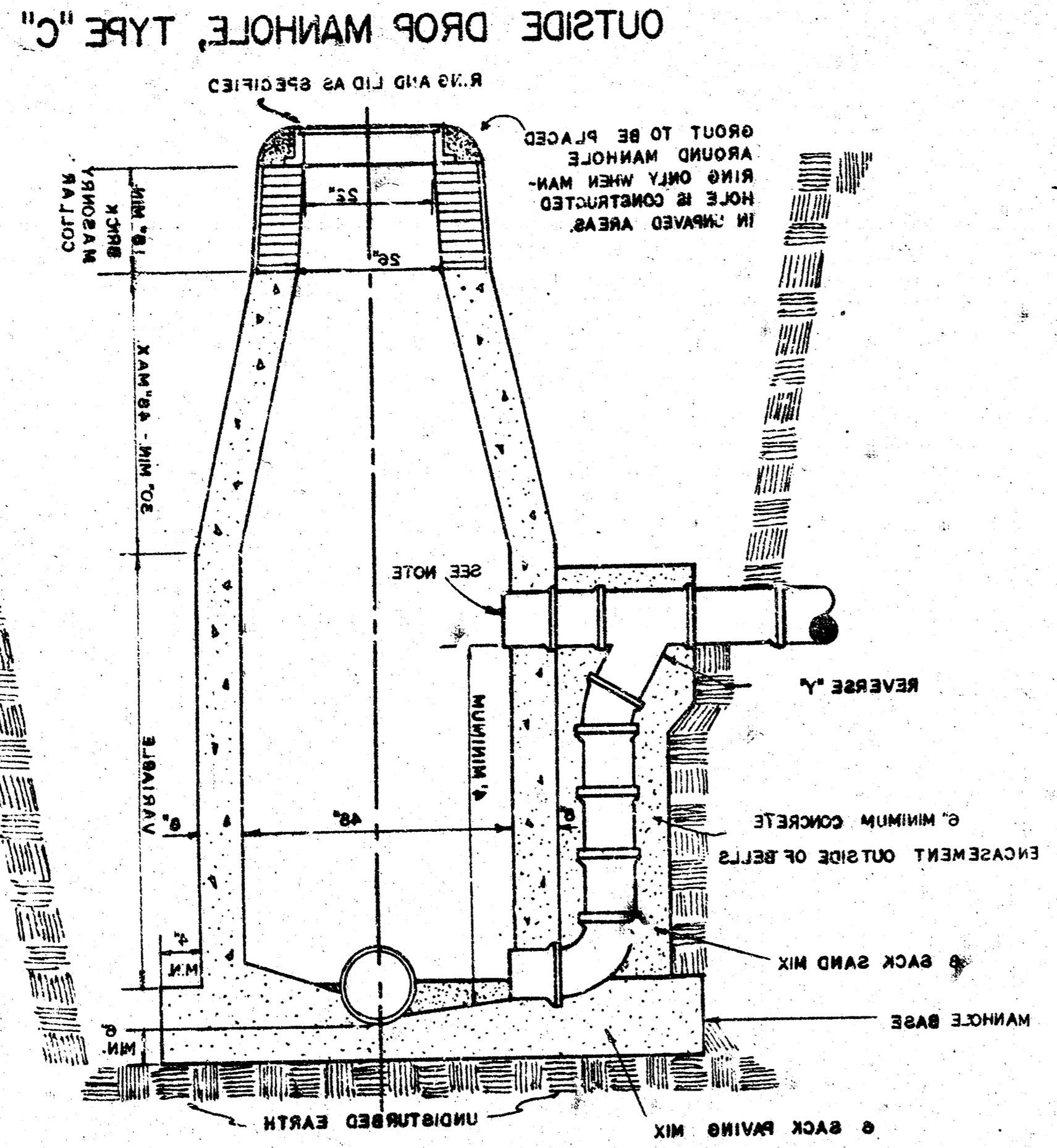


OUTSIDE DROP MANHOLE TYPE 'B'



1924
 CITY ENGINEER
 R. W. LINN
 CITY OF WICHITA, KANSAS
 ENGINEERING DIVISION
 BY
 ADOPTED AS STANDARD DESIGN
 SEWER APPURTENANCES
 DETAILS OF

CRETE BARREL.
 REGIONAL MODIFICATION OF THE CON-
 OF THE MANHOLE TO ELEVATION
 IS OBVIOUS THAT ANY ADJUSTMENT
 GAS AND IN LOCATIONS WHERE IT
 FORMATION OF HYDROGEN SULFIDE
 DETERIORATION OF CONCRETE DUE TO
 ONLY ON SEWERS NOT SUBJECT TO
 MANHOLES ARE TO BE CONSTRUCTED
 CAST IN PLACE CIRCULAR CONCRETE
 SAND MIX CONCRETE.
 SAND MIX CONCRETE USING 8 SACK
 SHALL BE SHAPED TO INCREASE
 THE FLOOR OF ALL MANHOLES
 24" SHALL BE SET DIAMETER.
 WITH PIPE SIZES LARGER THAN
 INDICATED OTHERWISE. MANHOLES
 DIAMETERS WILL BE 4 FT. UNLESS
 DROPS MANHOLES FOR THE TYPE AND
 AND STANDARD DROP MANHOLES TYPE
 STANDARD MANHOLES TYPE "C"
 PER CUBIC YARD.
 MORTAR USED IN MASONRY CONSTRUCTION
 SHALL CONTAIN 8 SACKS OF CEMENT
 GENERAL NOTES



NOTE: OPENING FOR INLET PIPE
 CUT IN MANHOLE WALL AND PIPE
 GROUDED IN PLACE WITH NON-
 SHRINKING GROUT. EXTERIOR
 OF COMPLETED CONNECTION TO
 BE SEALED WITH APPROVED
 COATING.

