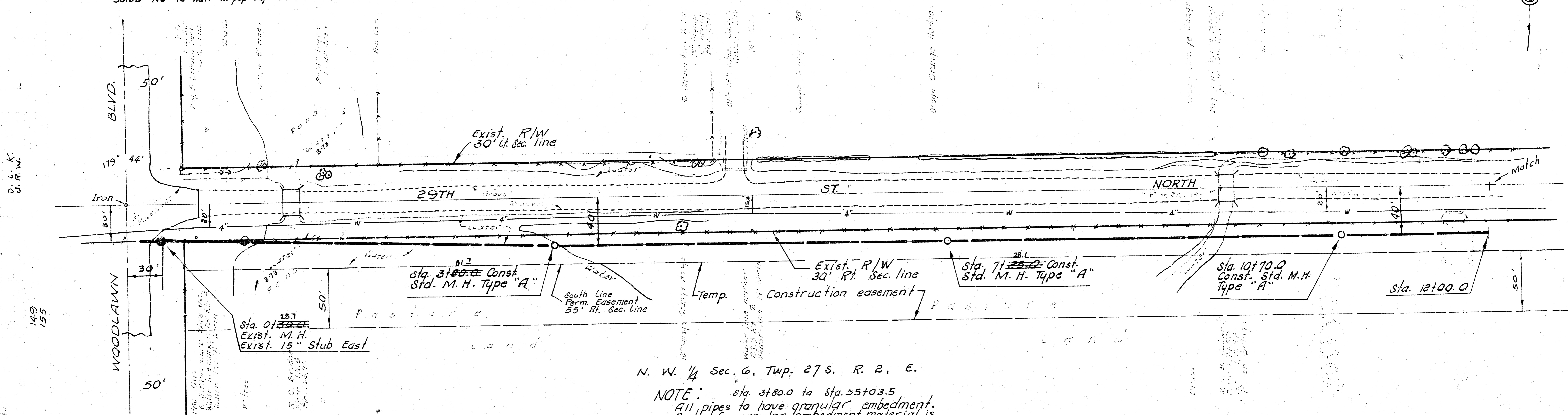
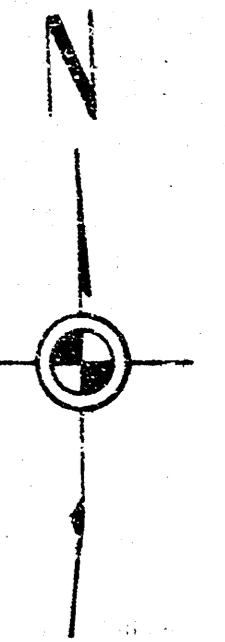


TIES TO IRON & 29TH ST. NO. 4 & WOODLAWN BLVD.
 58.05' SE to 3" Nail in W-face cor. post.
 51.00' SW to " on conc. headwall.
 51.03' NW to " on conc. headwall.
 49.69' NW to nail in pop cap NE face R.P.
 56.35' NE to nail in pop cap SE face R.P.

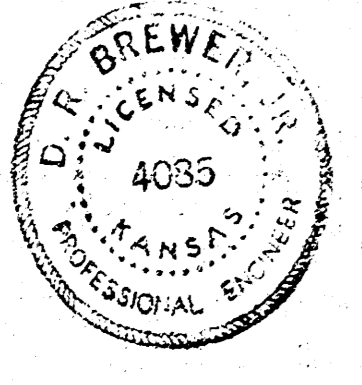
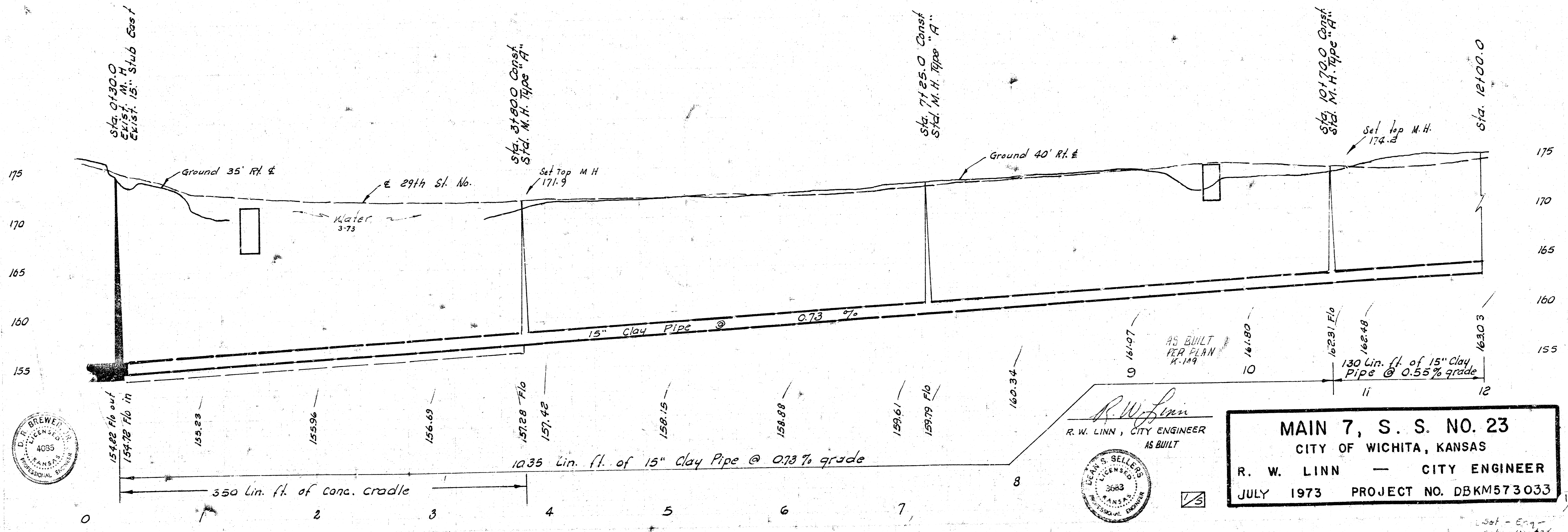
B. M. 175.95 City Std. "n" top
 N. Headwall R.C.B. 49' W.
 17' N. of Both Woodlawn Blvd.
 and 29th St. North.

B. M. 175.28 "a" on W-End N. Headwall
 R.C.B. 96' E. of Woodlawn on 29th St. North.

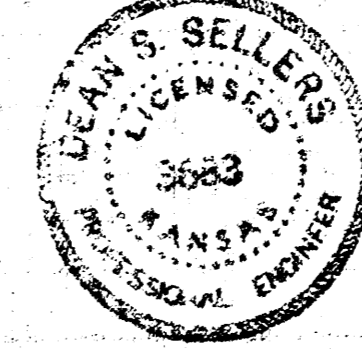


N. W. 1/4 Sec. 6, Twp. 27 S. R. 2, E.

NOTE: Sta. 3100.0 to Sta. 55+03.5
 All pipes to have granular embedment.
 Cost of granular embedment material is
 to be included in the bid price for pipes.



R. W. Linn
 R. W. LINN, CITY ENGINEER
 AS BUILT



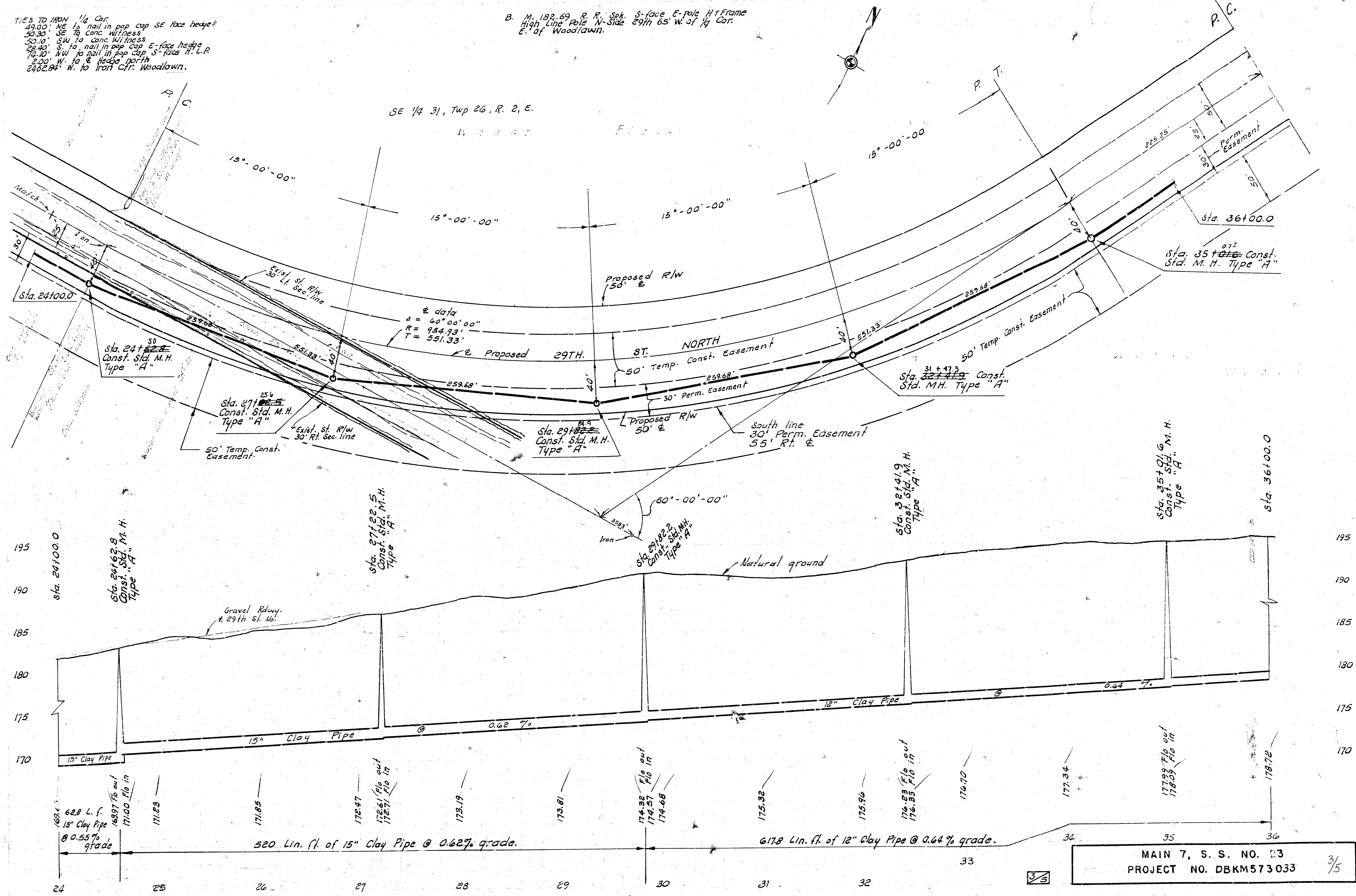
MAIN 7, S. S. NO. 23
 CITY OF WICHITA, KANSAS
 R. W. LINN — CITY ENGINEER
 JULY 1973 PROJECT NO. DBKM573033

Set - Eng
 Set - 1973

TIES TO IRON 1/4 Cor.
 49.00' NE to nail in pop cap SE face hedge
 50.30' SE to conc. witness
 50.10' SW to conc. witness
 28.40' S to nail in pop cap E-face hedge
 14.10' NW to nail in pop cap S-face H.L.P.
 2.00' W to E hedge north
 2402.84' W. to Iron Ctr. Woodlawn.

B. M. 182.69 R. R. Spk. S-face E-pole Ht Frame
 High Line Pole N-side 29th 65' W of 1/4 Cor.
 E. of Woodlawn.

SE 1/4 31, Twp 26, R. 2, E.



MAIN 7, S. S. NO. 23
 PROJECT NO. DBKM573033
 3/5

T. B. M. 211.89 R. R. Spk. w-face
 1/4 post E-Side Rock Road
 1175' N. of 29th.

S. M. 213.91 "a" cut on conc. base fence post
 SW cor. Rock Road & 29th St. North.

SE 1/4 31, Twp. 26, R. 2, E.

W h e a t

F i e l d

F i e l d

GENERAL NOTES

- SAND BACKFILL SHALL BE FLUSHED AND VIBRATED IN 6' LIFTS. THE COST OF THE SAND BACKFILL, FLUSHING, VIBRATING, AND ALL NECESSARY INCIDENTALS SHALL BE INCLUDED IN THE PRICE BID PER LINEAL FOOT FOR PIPE FOR THE VARIOUS SIZES.
- THE USE OF WYO-BOND BENTONITE AS MANUFACTURED BY ARCHER DANIELS MIDLAND CO., OR AN APPROVED EQUAL WILL BE REQUIRED AS A MIXTURE WITH THE BACKFILL MATERIAL AT THE LOCATION OF ALL MANHOLES. THE AMOUNT OF BENTONITE REQUIRED SHALL RANGE BETWEEN 40 TO 80 LBS. PER MANHOLE LOCATION AS DIRECTED BY THE ENGINEER. NO DIRECT PAYMENT SHALL BE MADE FOR THIS WORK. THE COST OF MATERIAL AND NECESSARY INCIDENTALS TO COMPLETE THIS WORK SHALL BE INCLUDED IN PRICE BID PER MANHOLE.
- THE OUTSIDE SURFACES OF ALL BRICK MANHOLES SHALL BE DAMP-PROOFED. MATERIAL REQUIRED SHALL BE BITUMASTIC SUPER SERVICE BLACK OR BITUMASTIC #50 AND PRIMER AS MANUFACTURED BY KOPPERS CHEMICALS & COATINGS OR AN APPROVED EQUAL. THE COST OF THIS WORK SHALL BE INCLUDED IN PRICE BID PER MANHOLE.
- FIELD ENGINEER TO TAKE TIES TO ALL IRONS AND REPLACE IF IN CONSTRUCTION AREA.
- CRANULAR EMBEDMENT MATERIAL SHALL BE 6" IN THICKNESS AND REQUIRED ON ALL PIPE EXCEPT WHERE CRADLE IS SPECIFIED. THE COST OF FURNISHING AND PLACING ALL EMBEDMENT MATERIAL SHALL BE INCLUDED IN THE PRICE BID PER LINEAL FOOT PIPE FOR THE VARIOUS SIZES.
- CONTRACTOR SHALL GRADE DITCHES AND SHAPE ROADWAY. AFTER INSTALLATION OF SEWER AND PRIOR TO PLACEMENT OF ROAD GRAVEL, ALL WORK REQUIRED TO GRADE DITCHES AND SHAPE ROADWAY SHALL BE INCLUDED IN THE PRICE BID PER LINEAL FOOT OF ROAD GRAVEL.

Sta. 46+83.5

W h e a t

F i e l d

F i e l d

29TH ST. NORTH

ROAD

ROAD

ROCK

SE Cor. of SE 1/4 Sec. 31-26-2E

210
205
200
195
190
185

210
205
200
195
190
185

46

47

48

49

50

51

52

14

2

3

5

MAIN 7, S. S. NO. 23
 PROJECT NO. DBKM573033

5/5

