

# LATERAL 1, MAIN 7, S.S. NO. 23

## PROJECT NO. DBKL 574091

CITY OF WICHITA, KANSAS

R.W. LINN CITY ENGINEER

SEPTEMBER, 1974

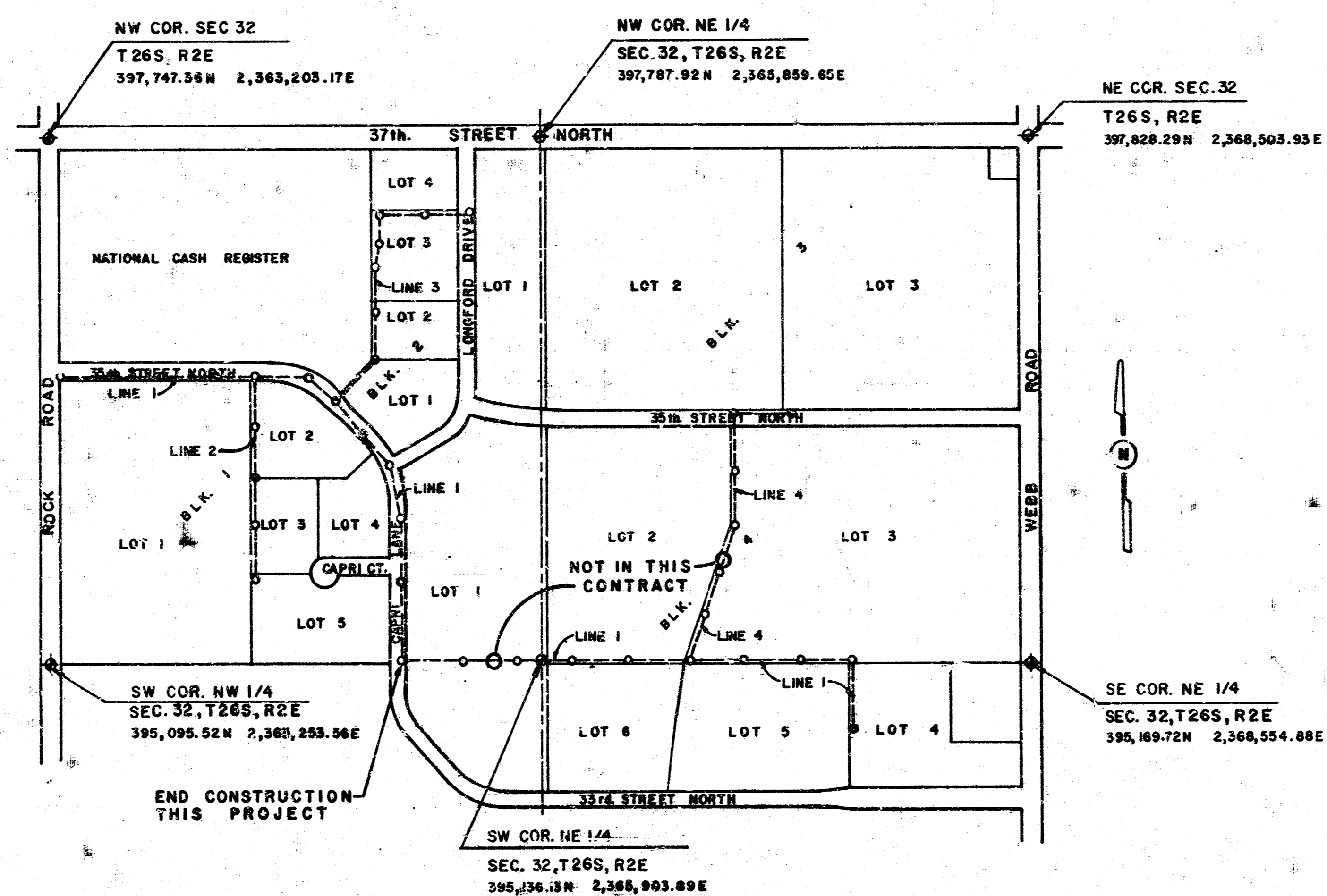
**NOTES:**

Sand Backfill in place including cost of sand, placing, jetting and vibrating shall be included in the price bid for Lin. Ft. of sewer pipe.

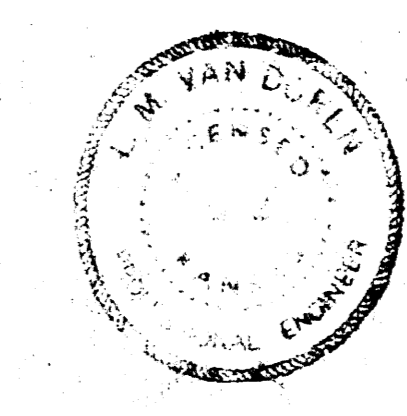
The cost of clearing right of way to facilitate construction of sanitary sewers shall be incidental to the project.

**INDEX TO DRAWINGS**

SHEET TITLE	SHEET NO.
TITLE & LOCATION MAP	1
LINE 1	2 - 4
LINE 2	5
LINE 3	6
SEWER APPURTENANCES	7 - 8



**LOCATION MAP**



VAN DOREN-HAZARD-STALLINGS  
ENGINEERS-ARCHITECTS • TOPEKA, KANSAS

SHEET 1 OF 8

B.M. RR. SPK. W. Face PP. 50' E & 03' S  
 & Rock Road & 35TH ST. N. Elev. 198.82

NCR

9+50.7  
 Sta 9+50.7  
 Const. Std. Type "A" or "C" M.H.  
 6590.23 4055.91

Sta 2+000  
 Const. Std. Type "A" or "C" M.H.  
 6538.78 3306.00

Sta 7+000  
 Const. Std. Type "A" or "C" M.H.  
 6546.41 3005.94

4448.8  
 Sta 4+500  
 Const. Std. Type "A" or "C" M.H.  
 6542.60 3555.97

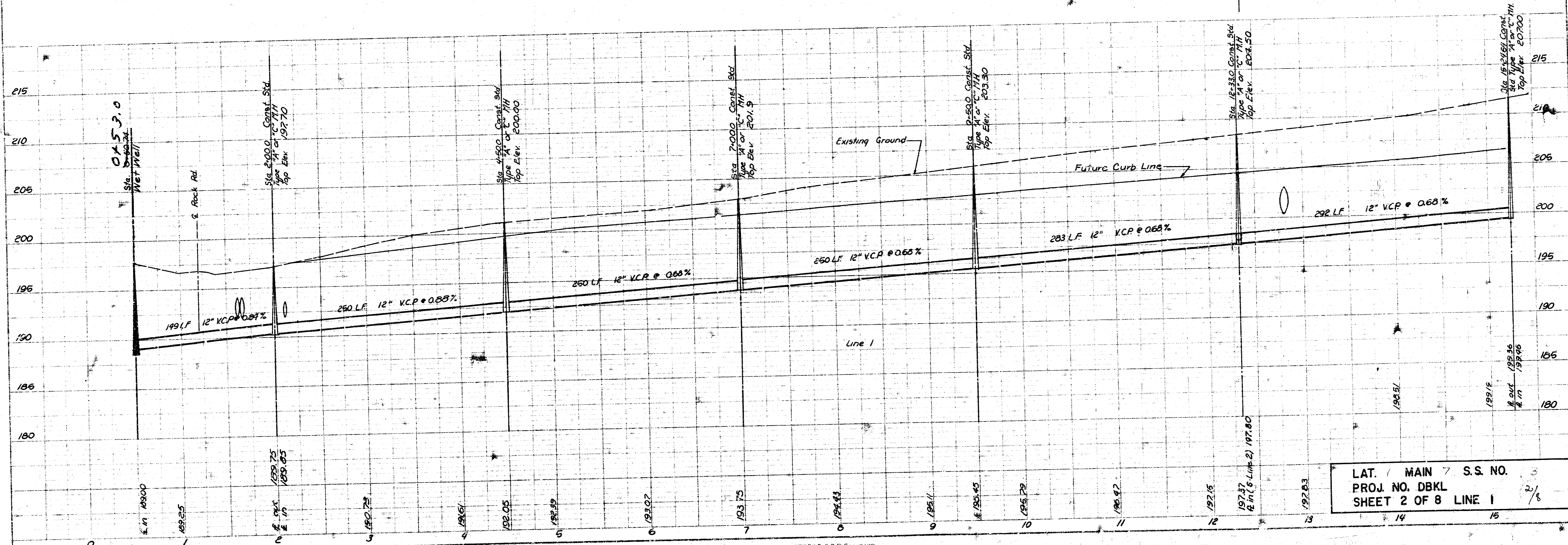
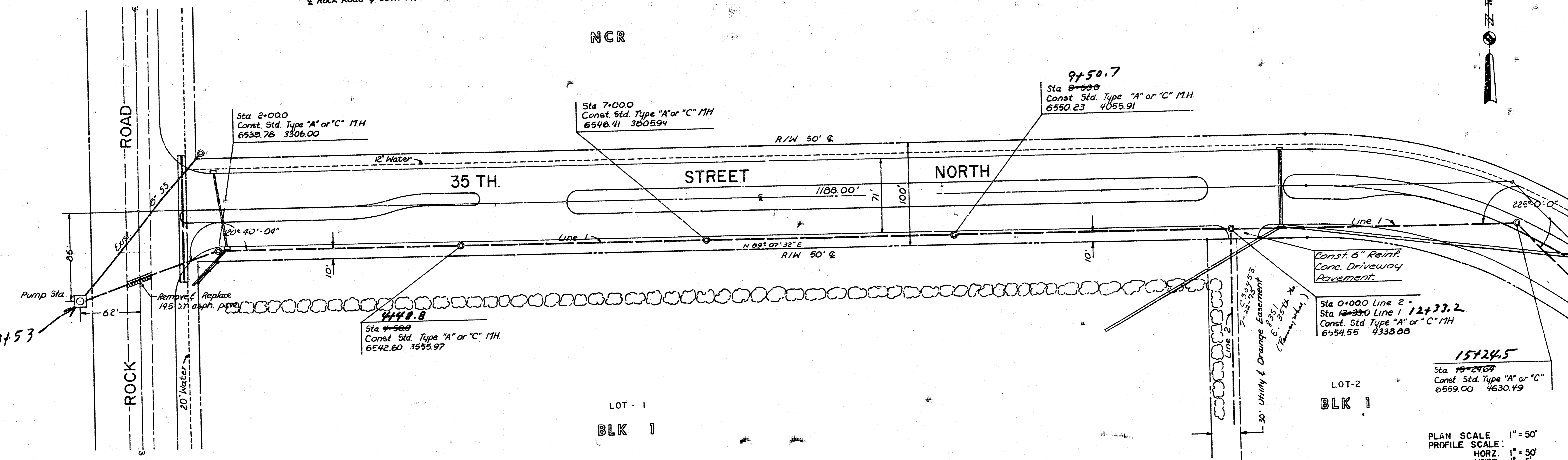
Const. 6" Reinf.  
 Conc. Driveway  
 Pavement.  
 Sta 0+000 Line 2  
 Sta 12+350 Line 1 12+33.2  
 Const. Std. Type "A" or "C" M.H.  
 6554.55 4338.08

15724.5  
 Sta 15+245  
 Const. Std. Type "A" or "C" M.H.  
 6559.00 4630.49

LOT-2  
 BLK 1

PLAN SCALE: 1" = 50'  
 PROFILE SCALE: 1" = 5'  
 HORZ. 1" = 50'  
 VERT. 1" = 5'

LOT - 1  
 BLK 1



LAT. / MAIN / S.S. NO. 3  
 PROJ. NO. DBKL 2/8  
 SHEET 2 OF 8 LINE 1

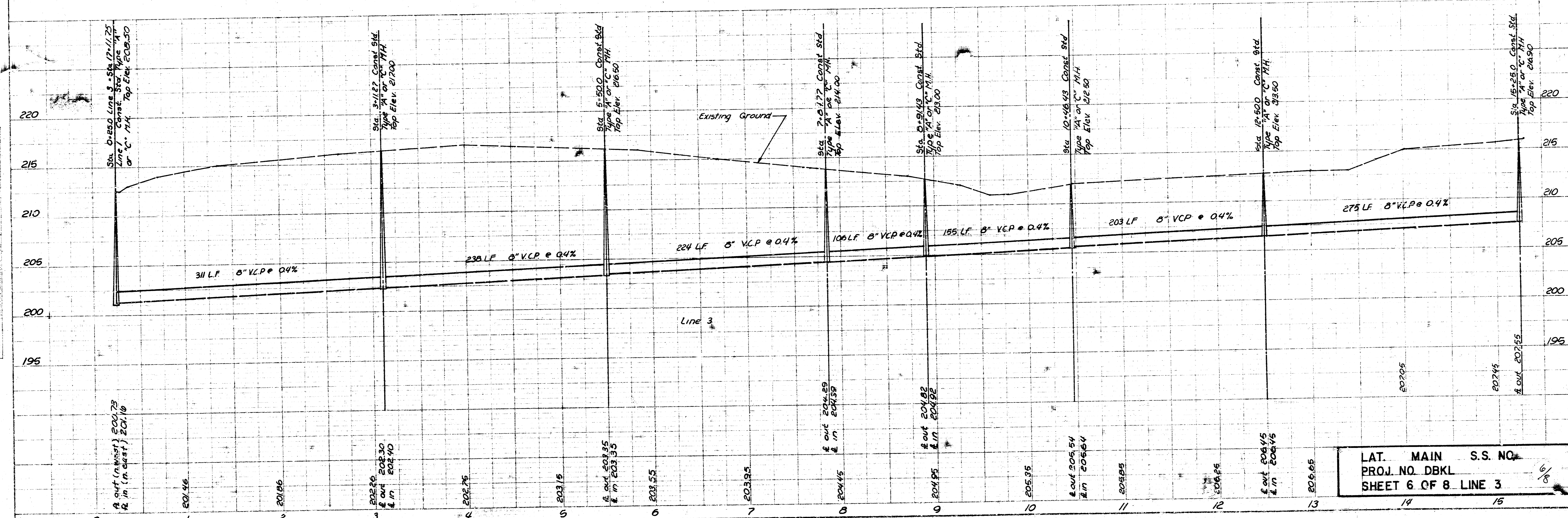
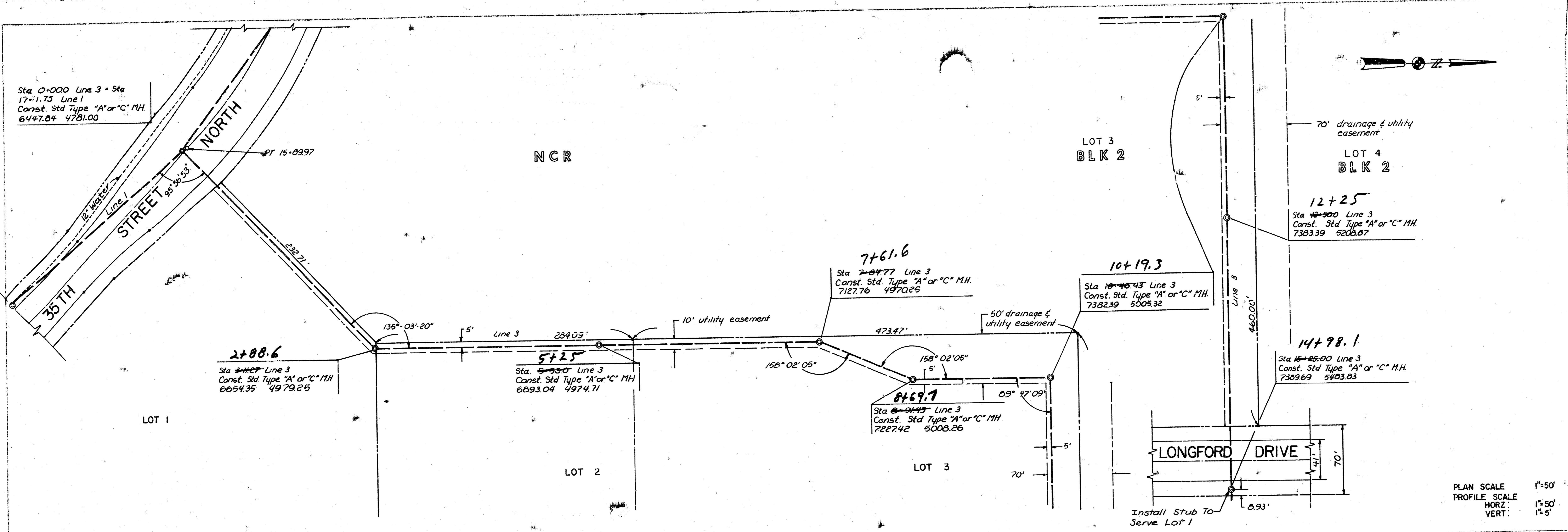
PLATE 1 PLAN - PROFILE & P.R. STANDARD

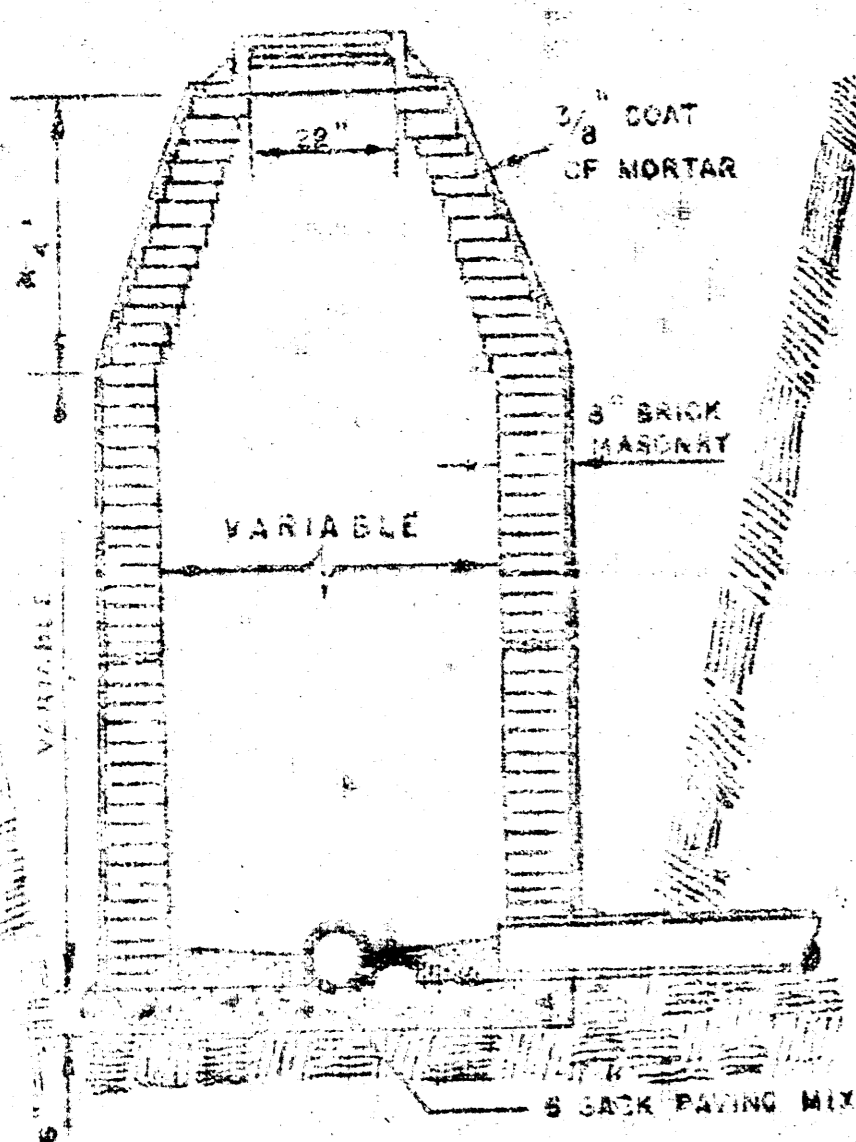
FILMED FROM THE BEST AVAILABLE COPY.....



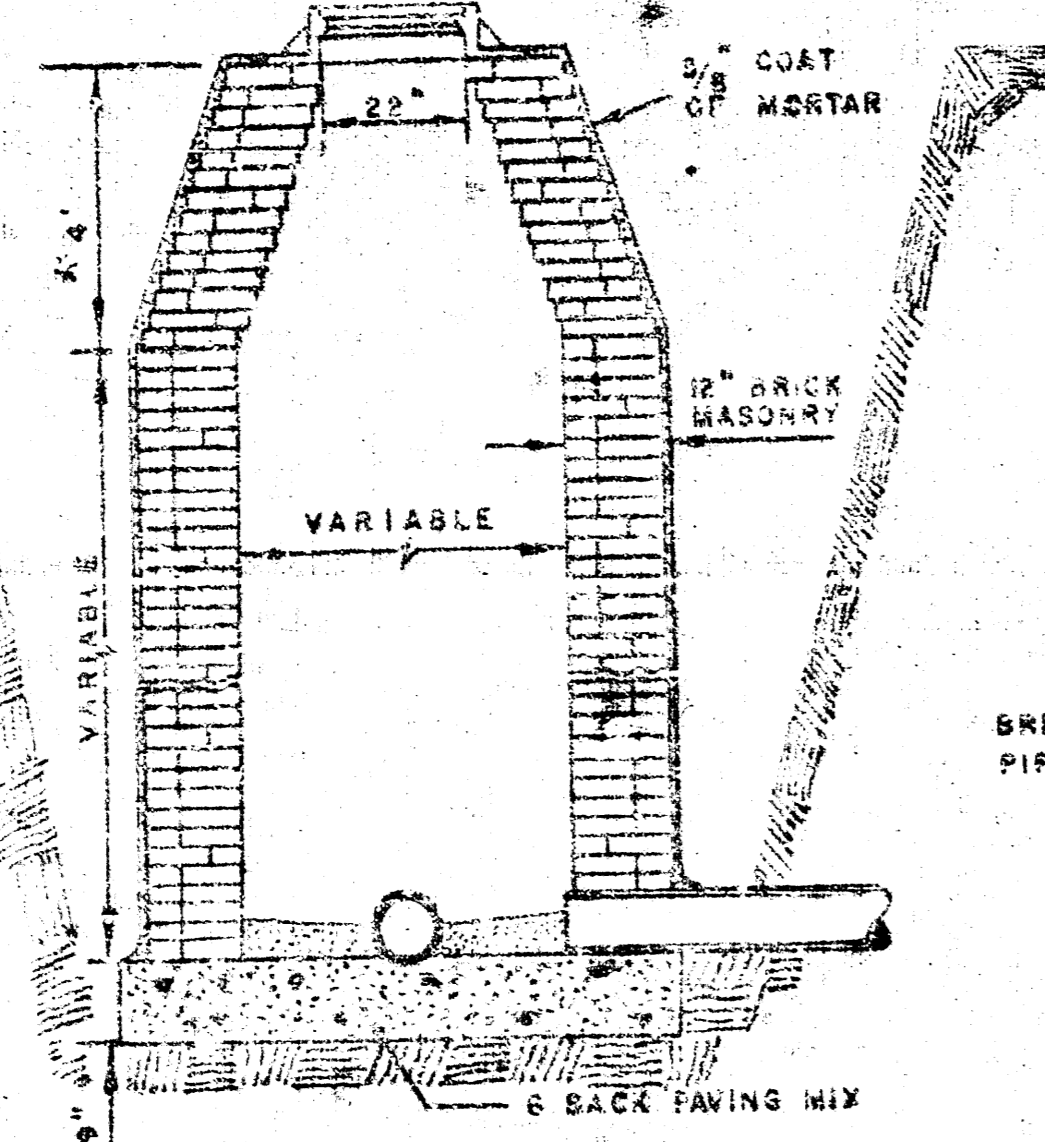




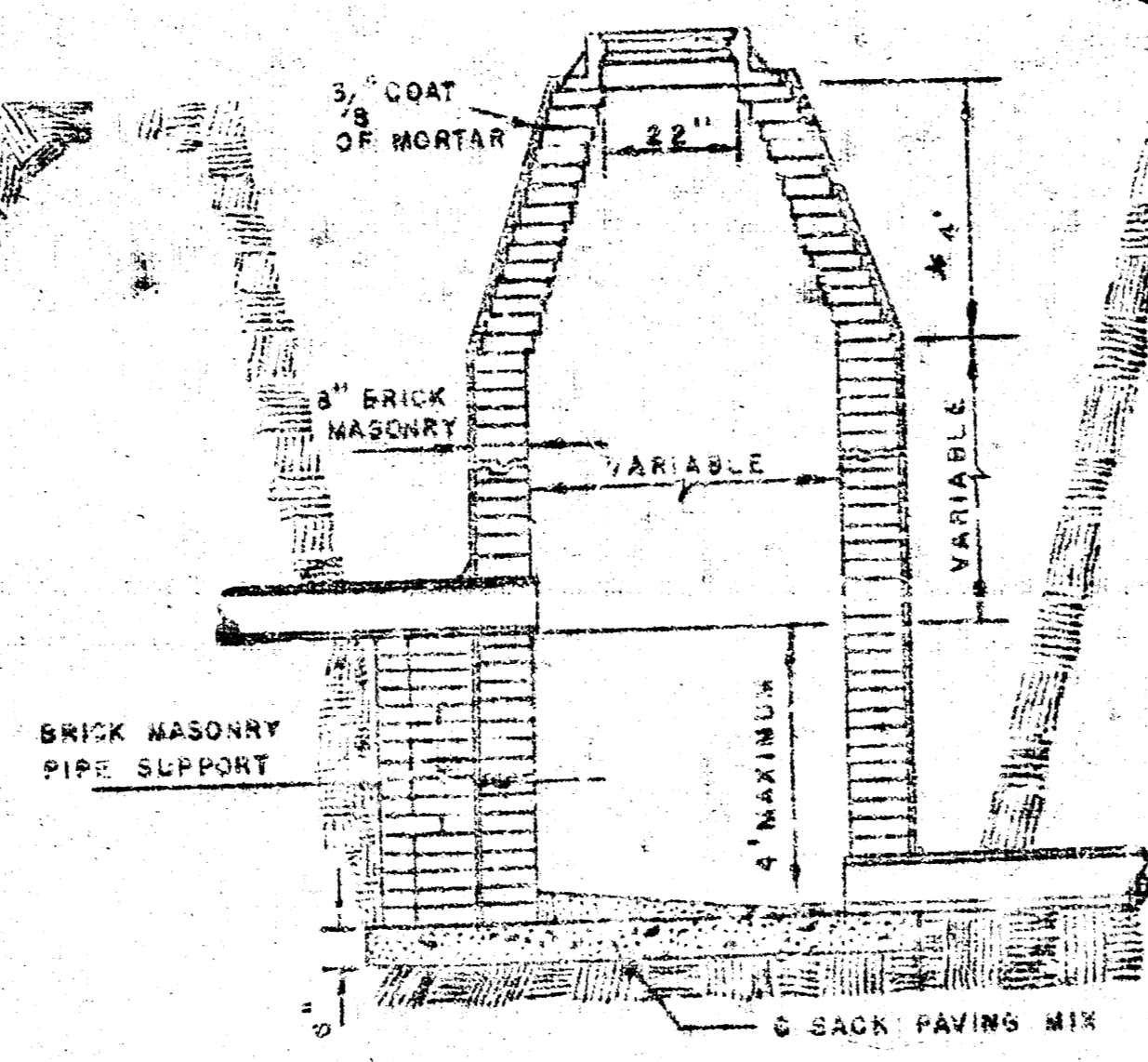




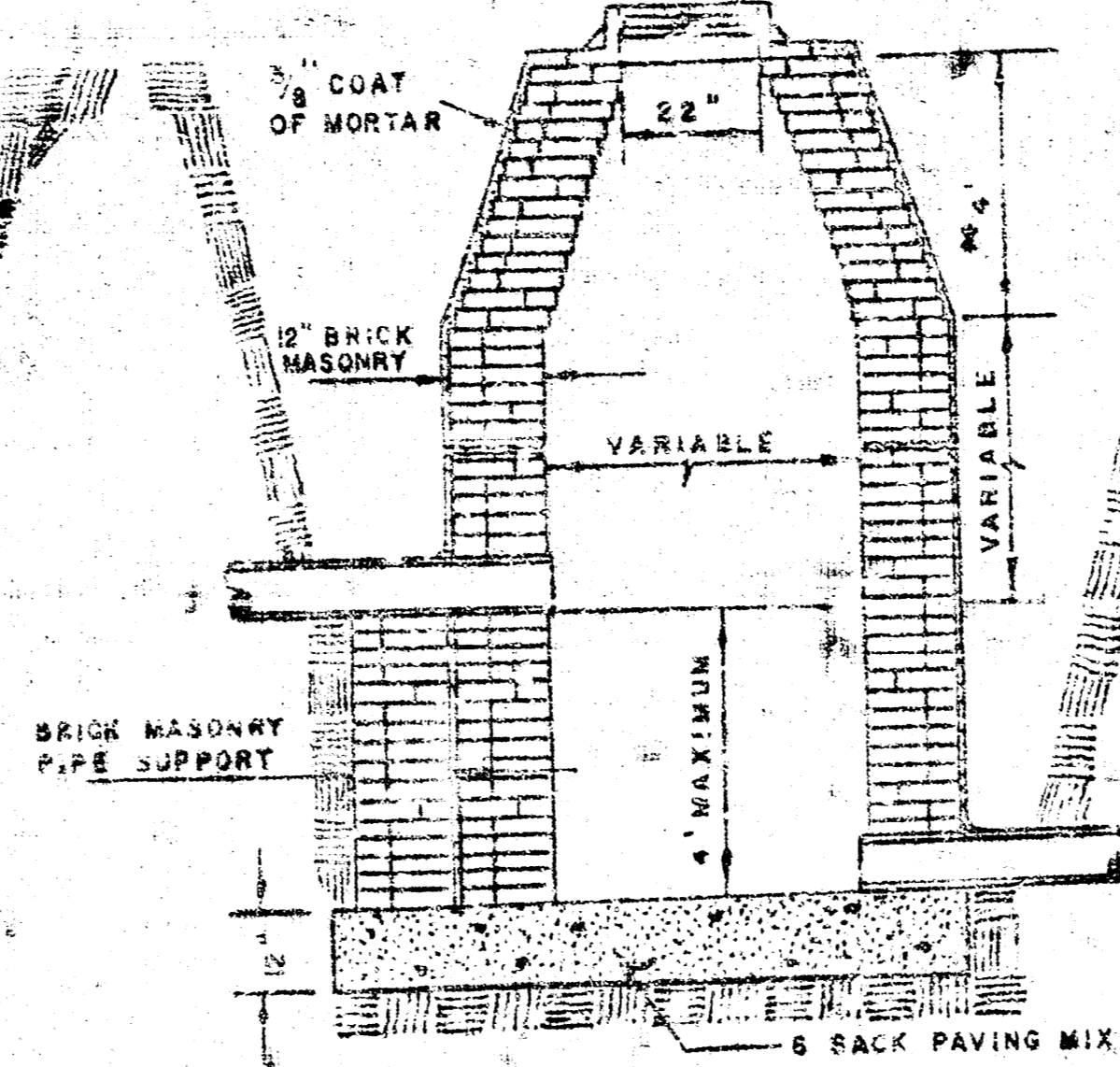
STANDARD MANHOLE  
TYPE "A"



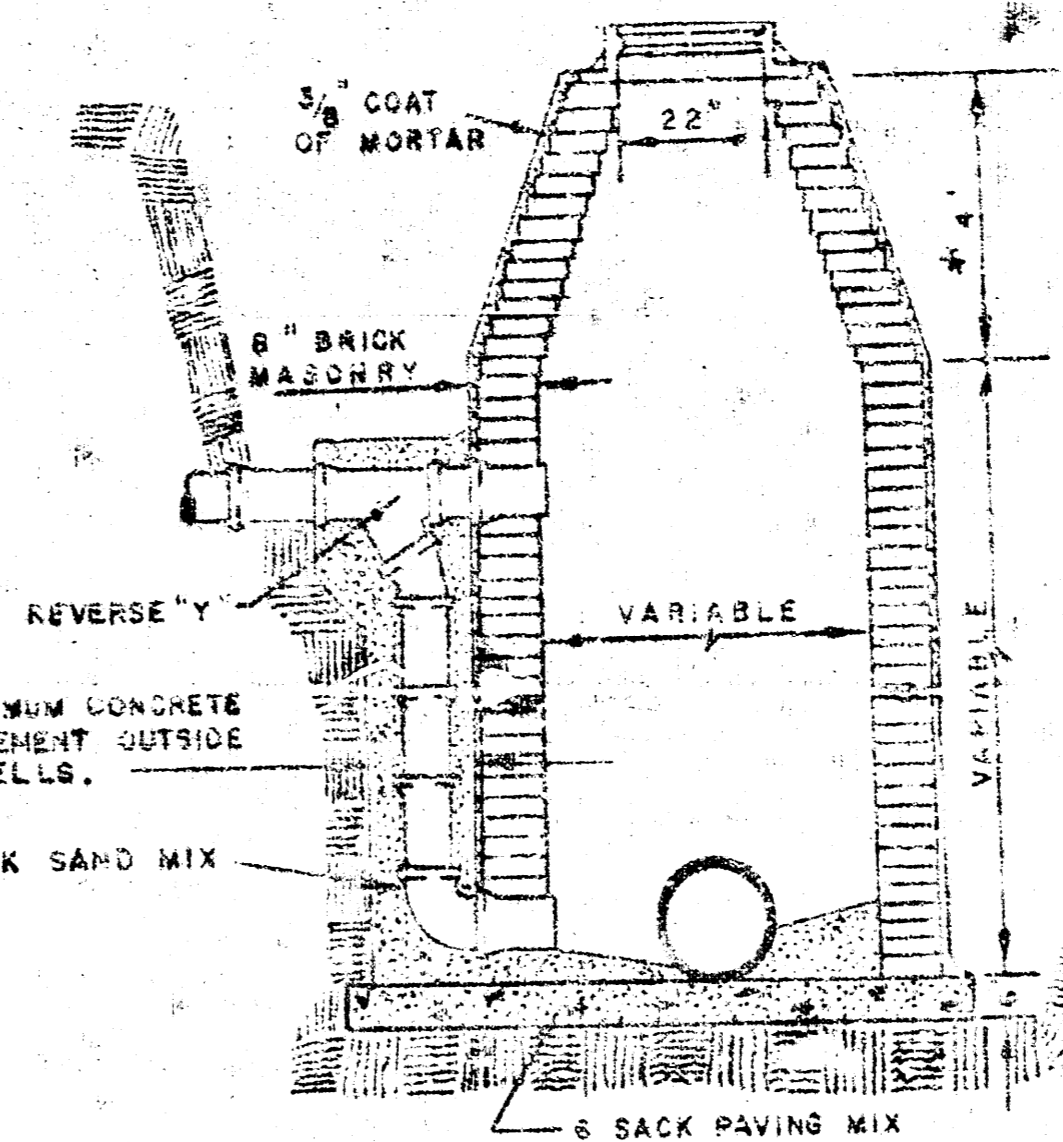
STANDARD MANHOLE  
TYPE "B"



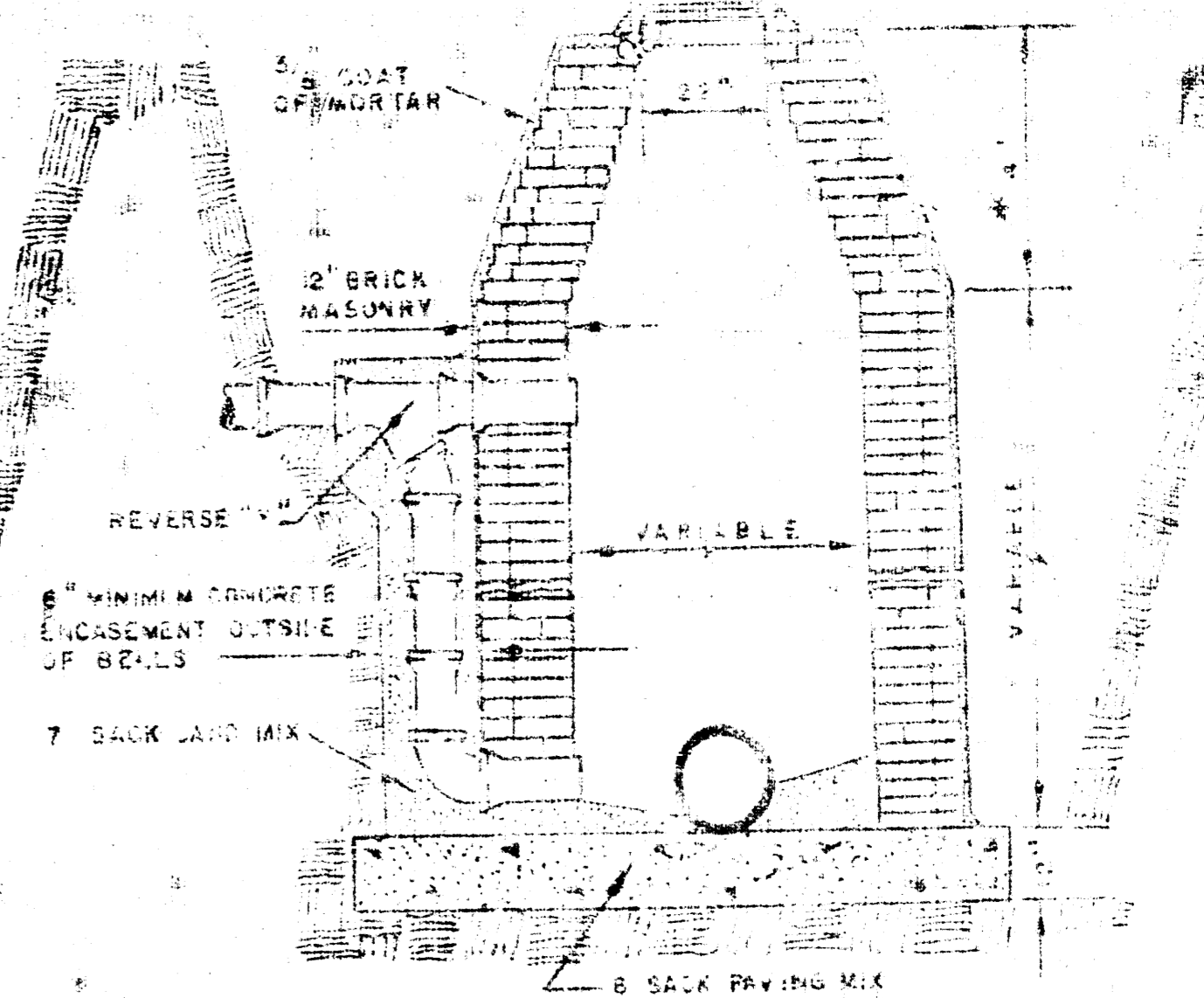
DROP MANHOLE  
TYPE "A"



DROP MANHOLE  
TYPE "B"

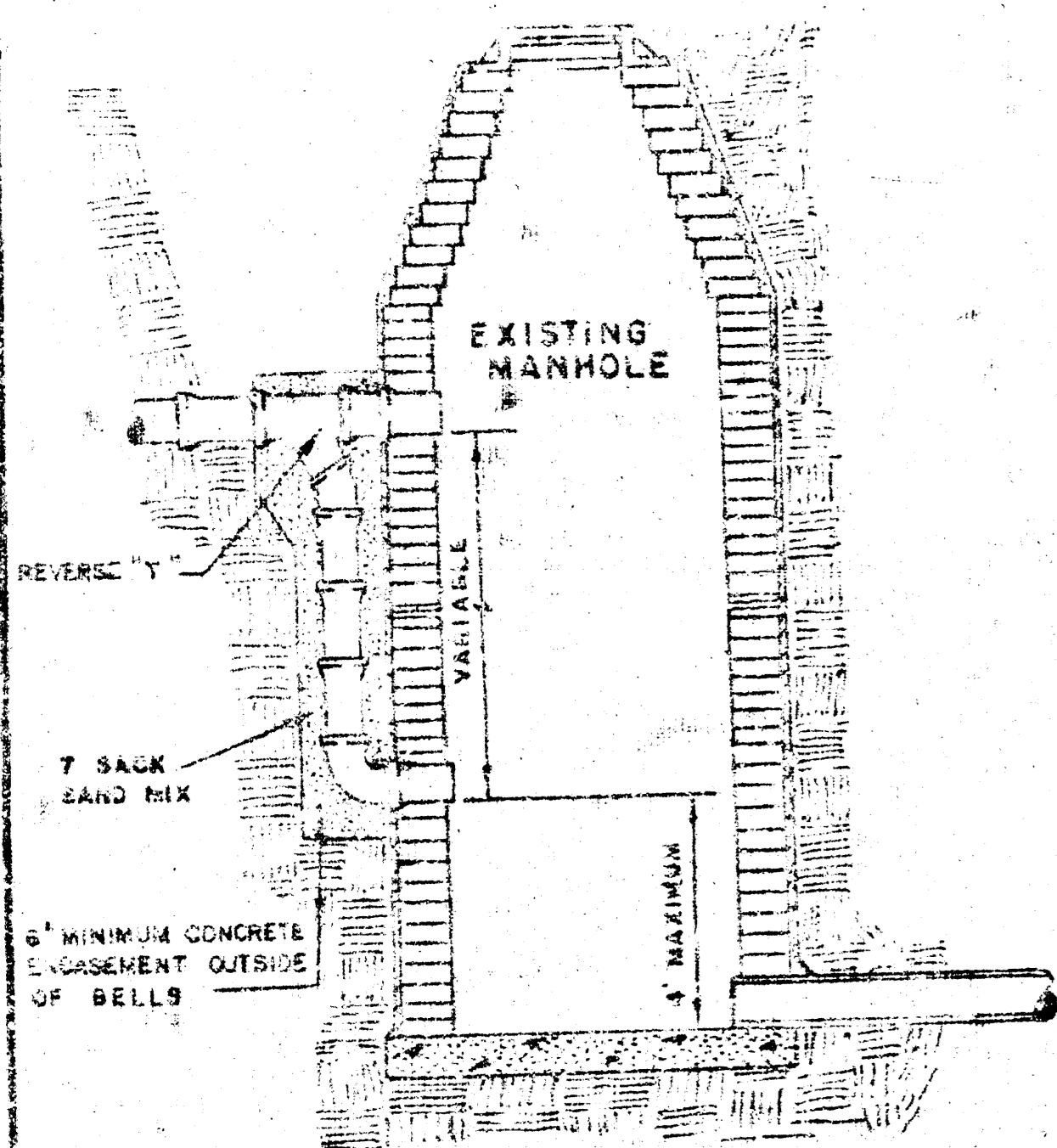


OUTSIDE DROP MANHOLE  
TYPE "A"

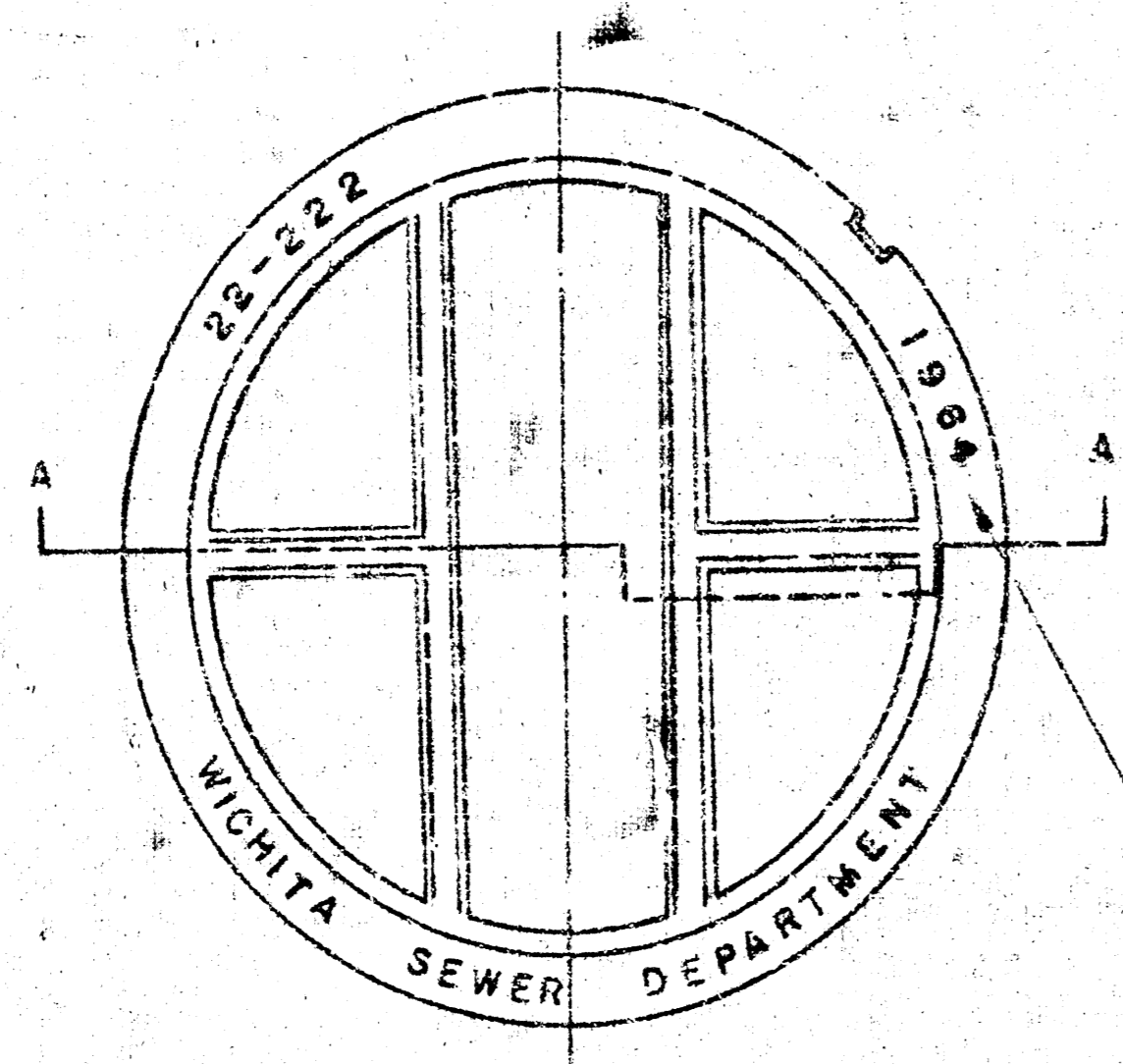


OUTSIDE DROP MANHOLE  
TYPE "B"

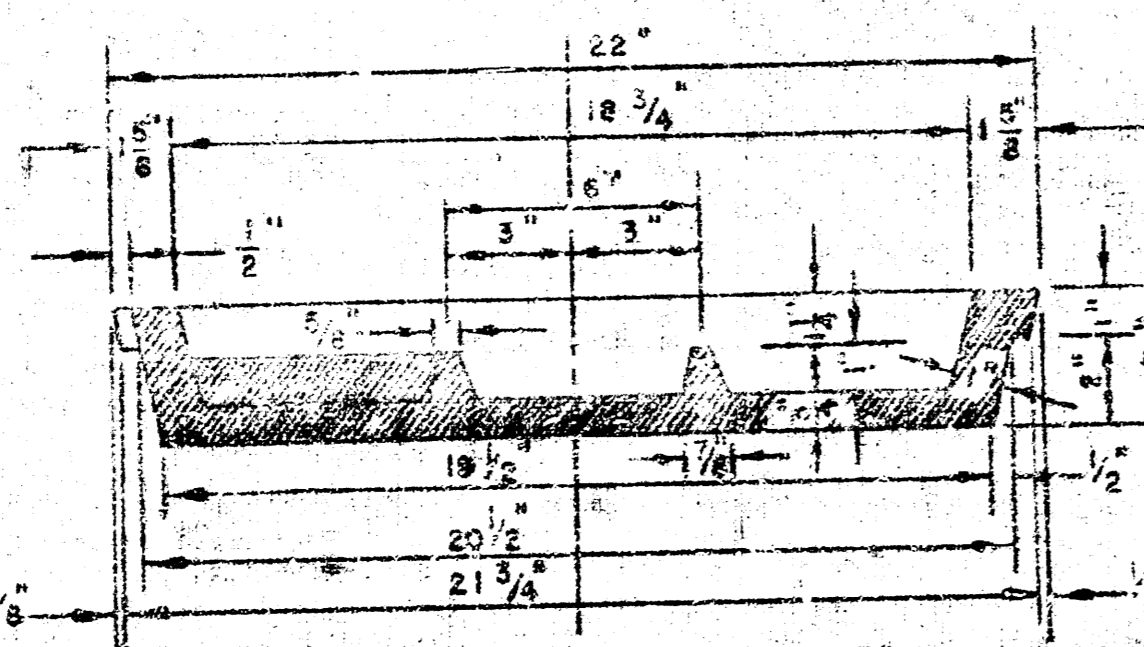
\* DRAW = 6" ON 5' DIA. M.H.



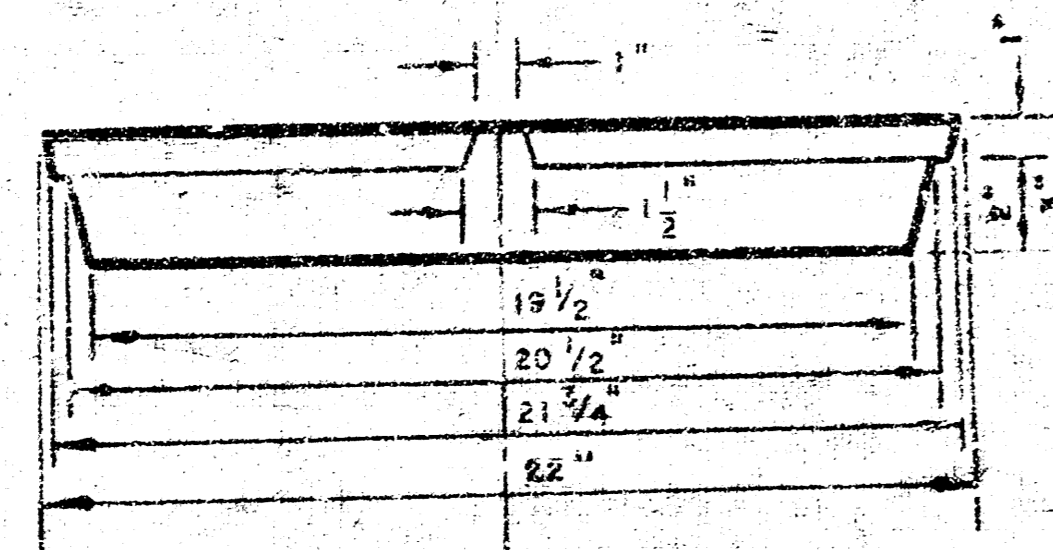
DETAIL OF DROP STACK  
FOR EXISTING MANHOLES IN GROUND WATER



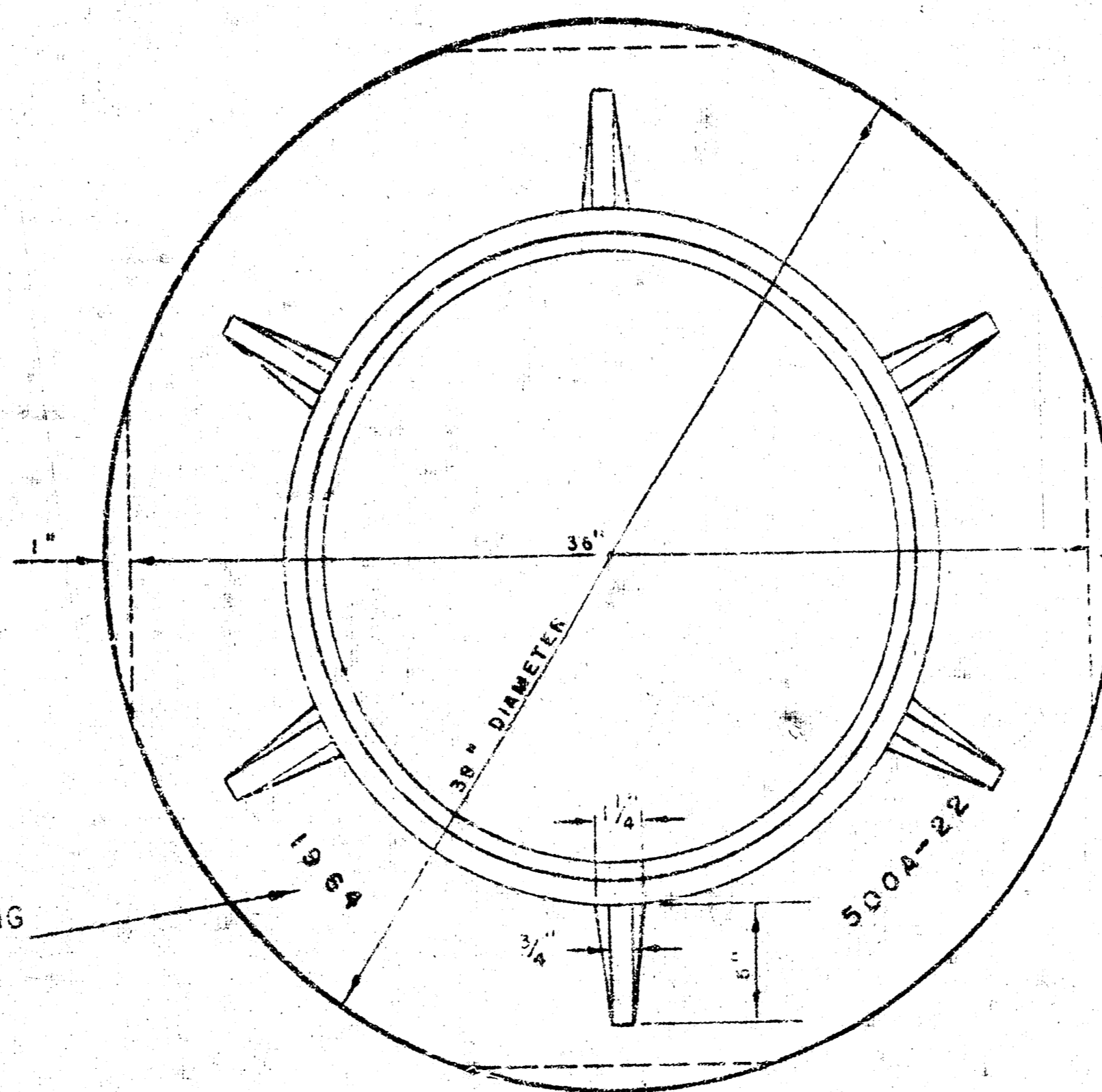
TOP VIEW  
MANHOLE COVER  
WEIGHT 110 LBS.



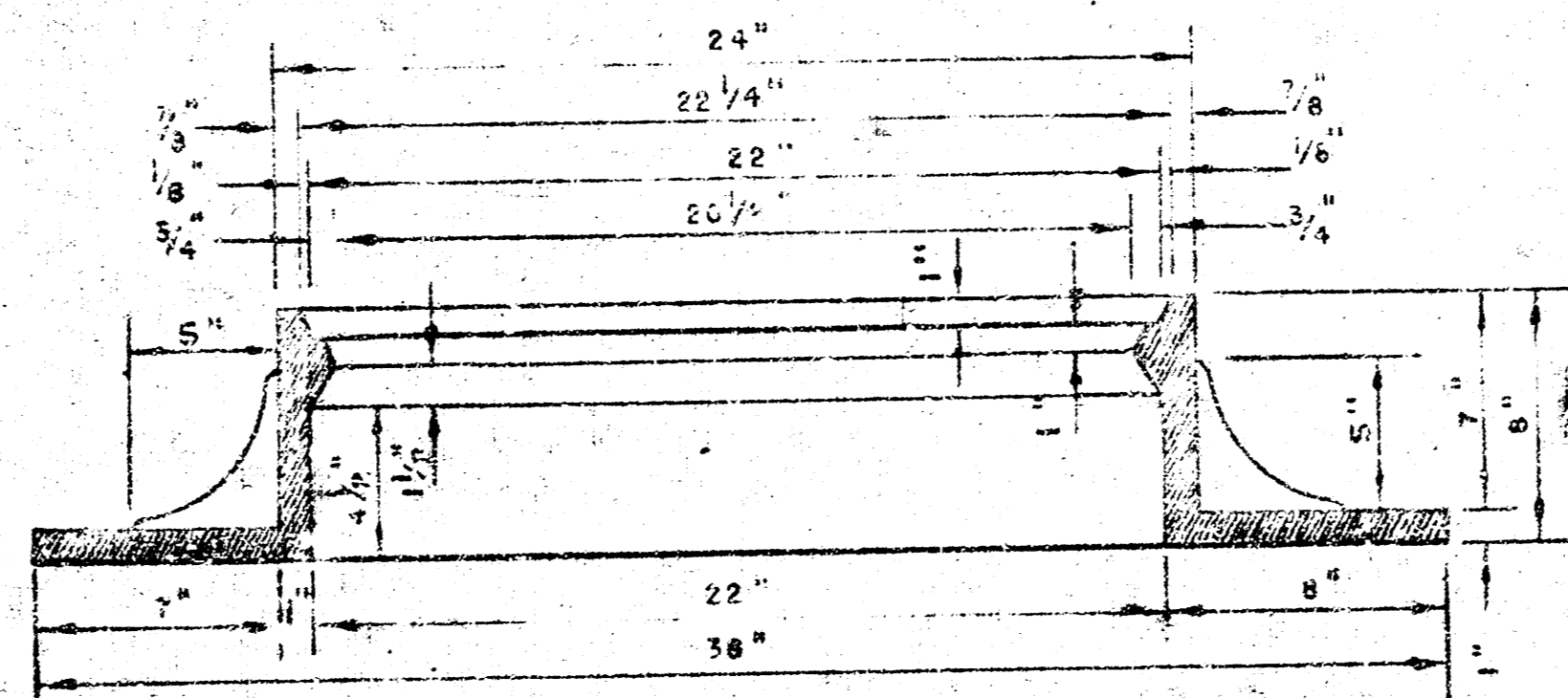
SECTION A-A  
MANHOLE COVER



SIDE VIEW  
MANHOLE COVER

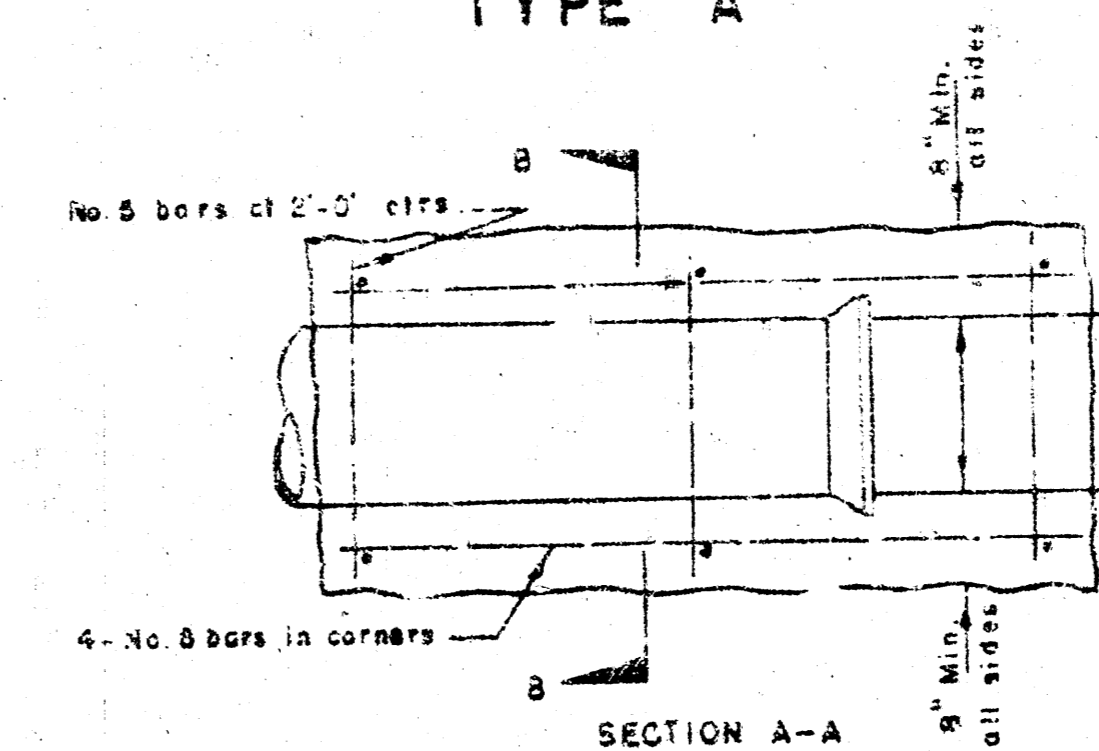


TOP VIEW  
MANHOLE RING  
WEIGHT 355 LBS.

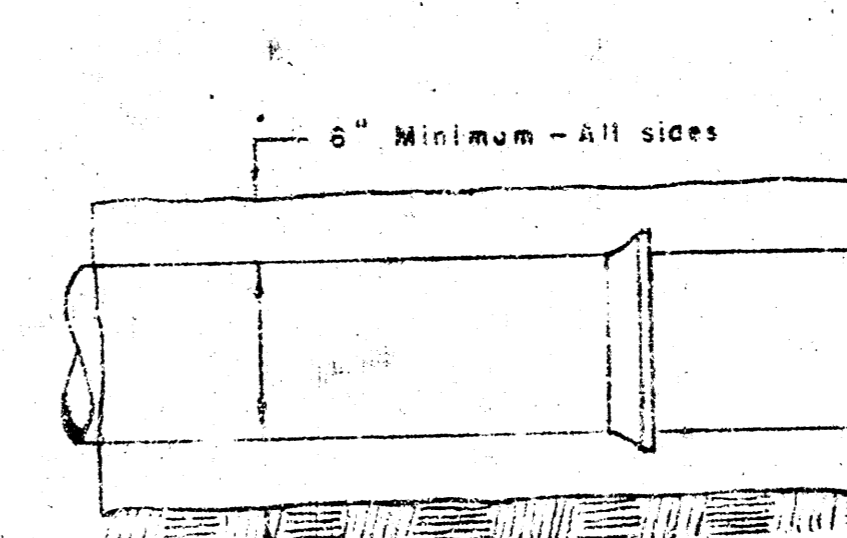
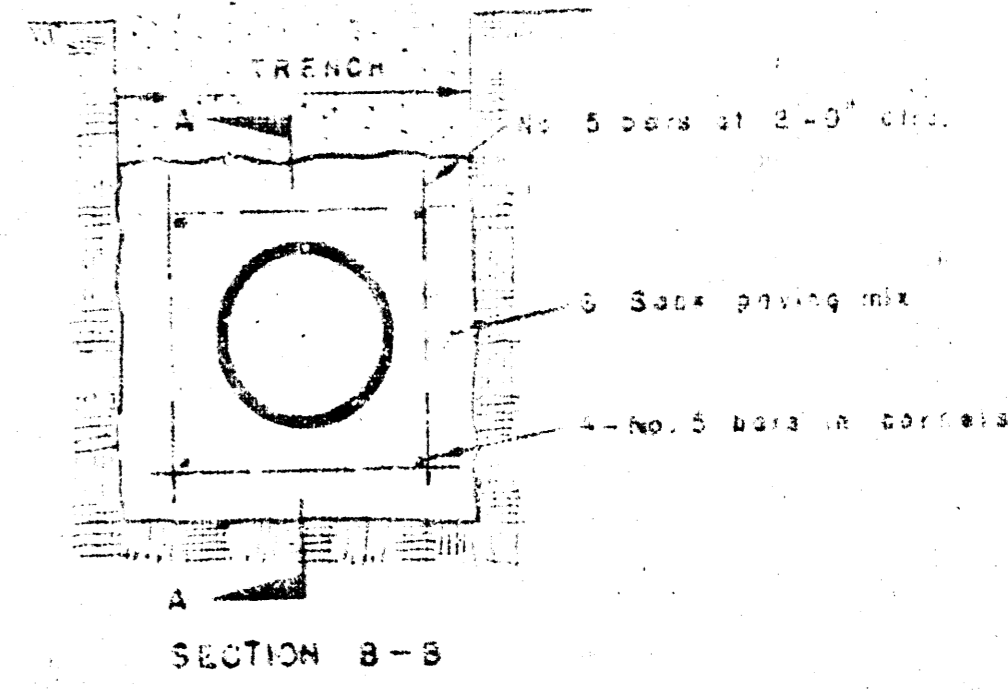


SECTION  
MANHOLE RING

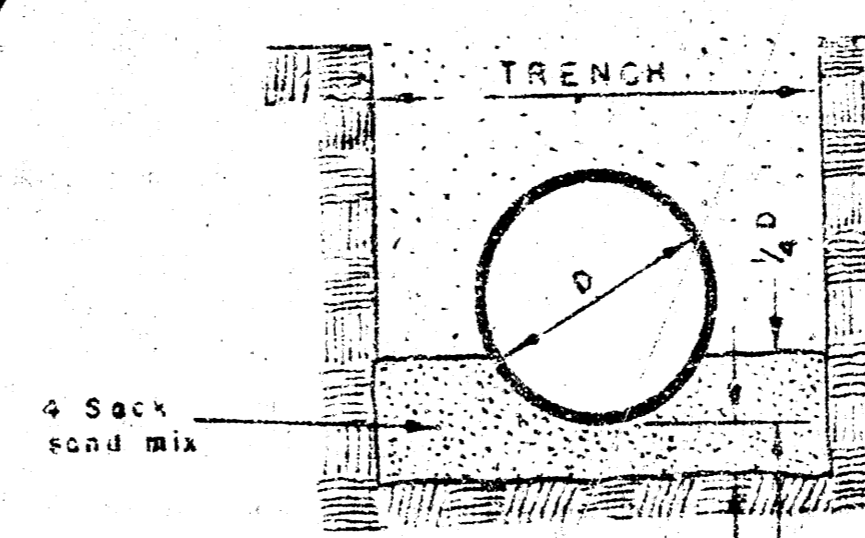
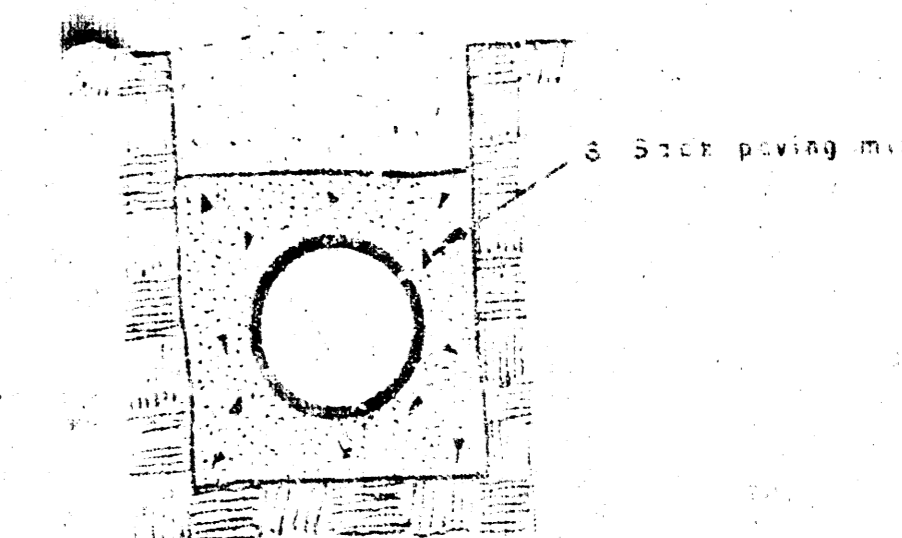
OUTSIDE CIRCUMFERENCE OF COVER  
AND THE INNER FACE AND SEAT OF  
RING TO BE MACHINE FIT.



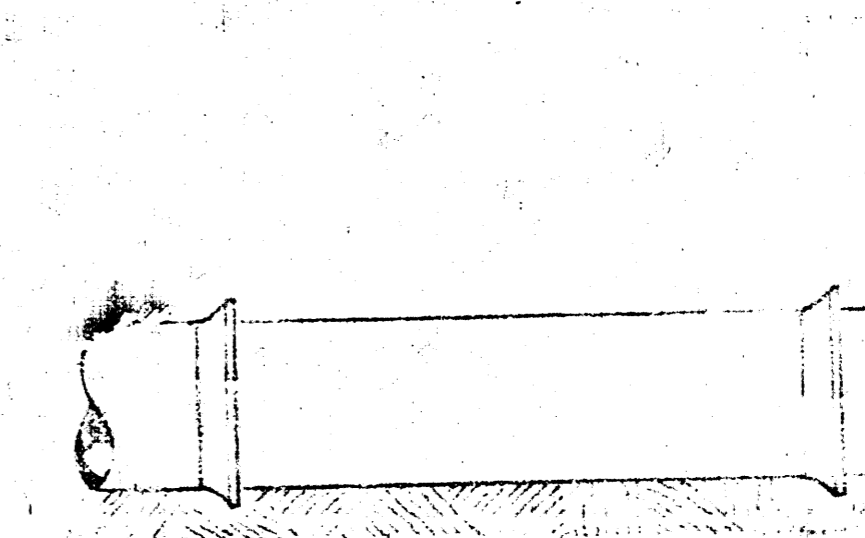
SECTION A-A  
REINFORCED CONCRETE ENCASEMENT  
FOR STRENGTH



SECTION A-A  
CONCRETE ENCASEMENT  
FOR COVER



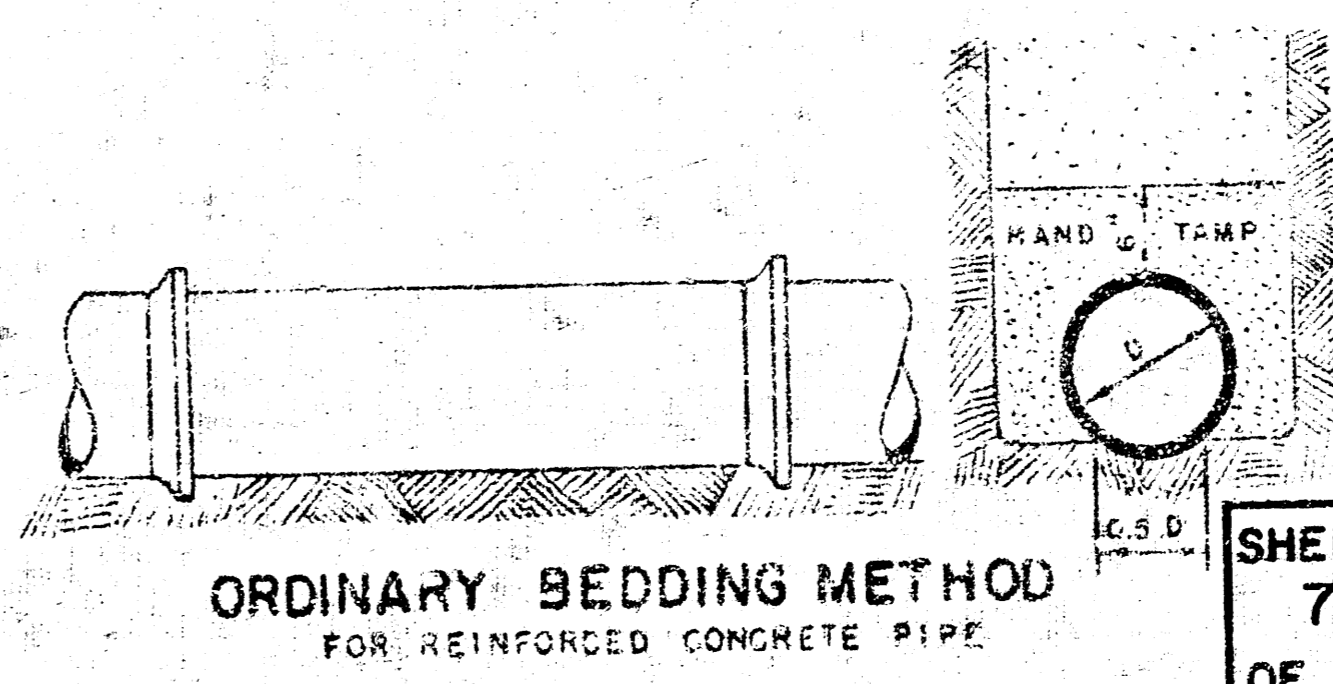
DETAIL OF CONCRETE CRADLE



ORDINARY BEDDING METHOD  
FOR CLAY PIPE

**MANHOLES**

THE CONCRETE USED FOR MORTAR IN MANHOLES SHALL CONTAIN 8 SACKS OF CEMENT PER CUBIC YARD.  
STANDARD MANHOLES AND DROP MANHOLES, REGARDLESS OF DIAMETER, SHALL BE BID AT ONE PRICE AS STANDARD MANHOLES.  
SINGLE OR DOUBLE OUTSIDE DROP MANHOLES SHALL BE BID AT ONE PRICE AS OUTSIDE DROP MANHOLES.  
ALL MANHOLES WITH PIPES LARGER THAN 24" SHALL BE 5' DIAMETER UNLESS OTHERWISE SPECIFIED ON PLAN. ALL M.H.'S WITH PIPES 24" & SMALLER SHALL BE 4' DIA.

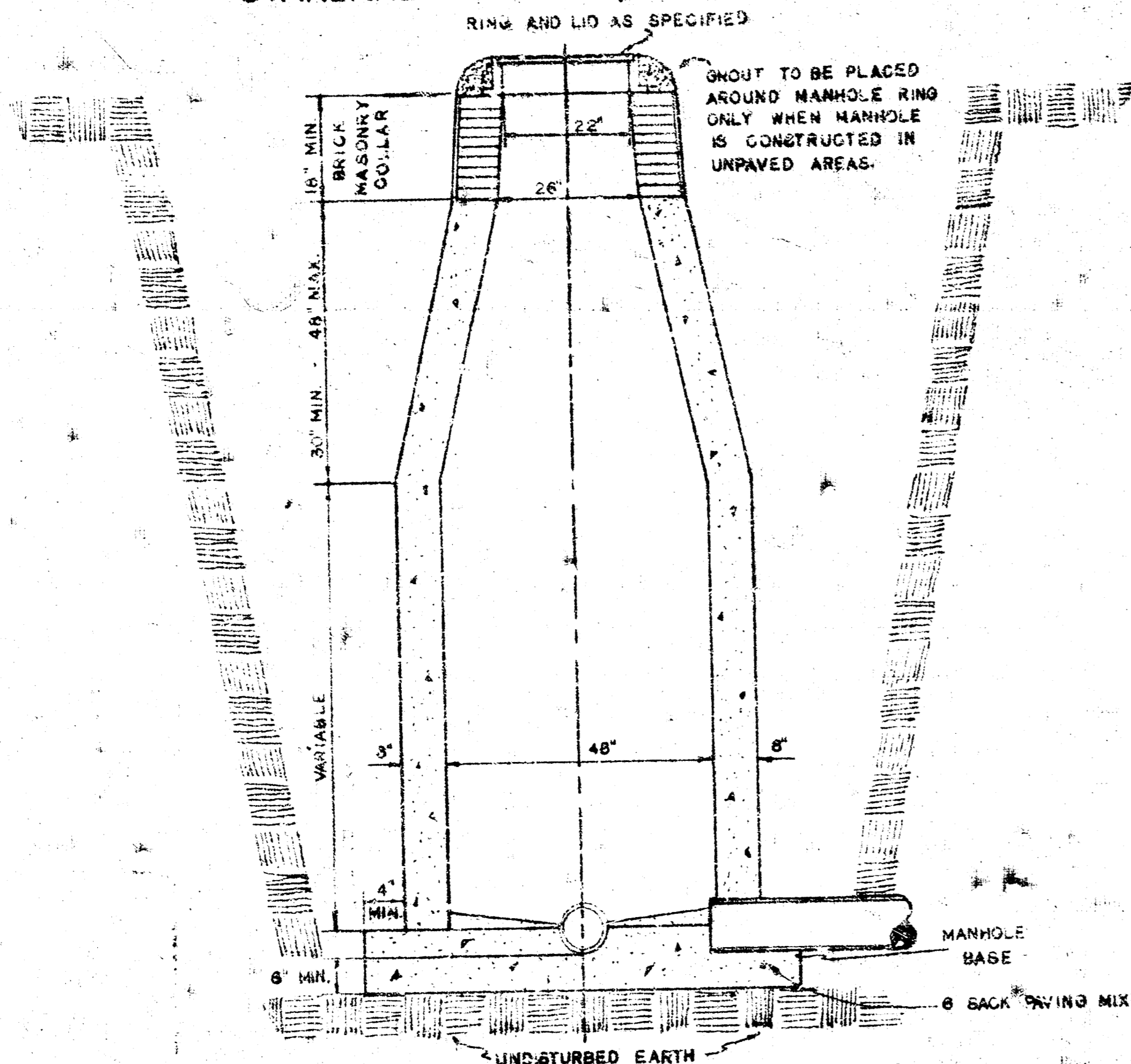


ORDINARY BEDDING METHOD  
FOR REINFORCED CONCRETE PIPE

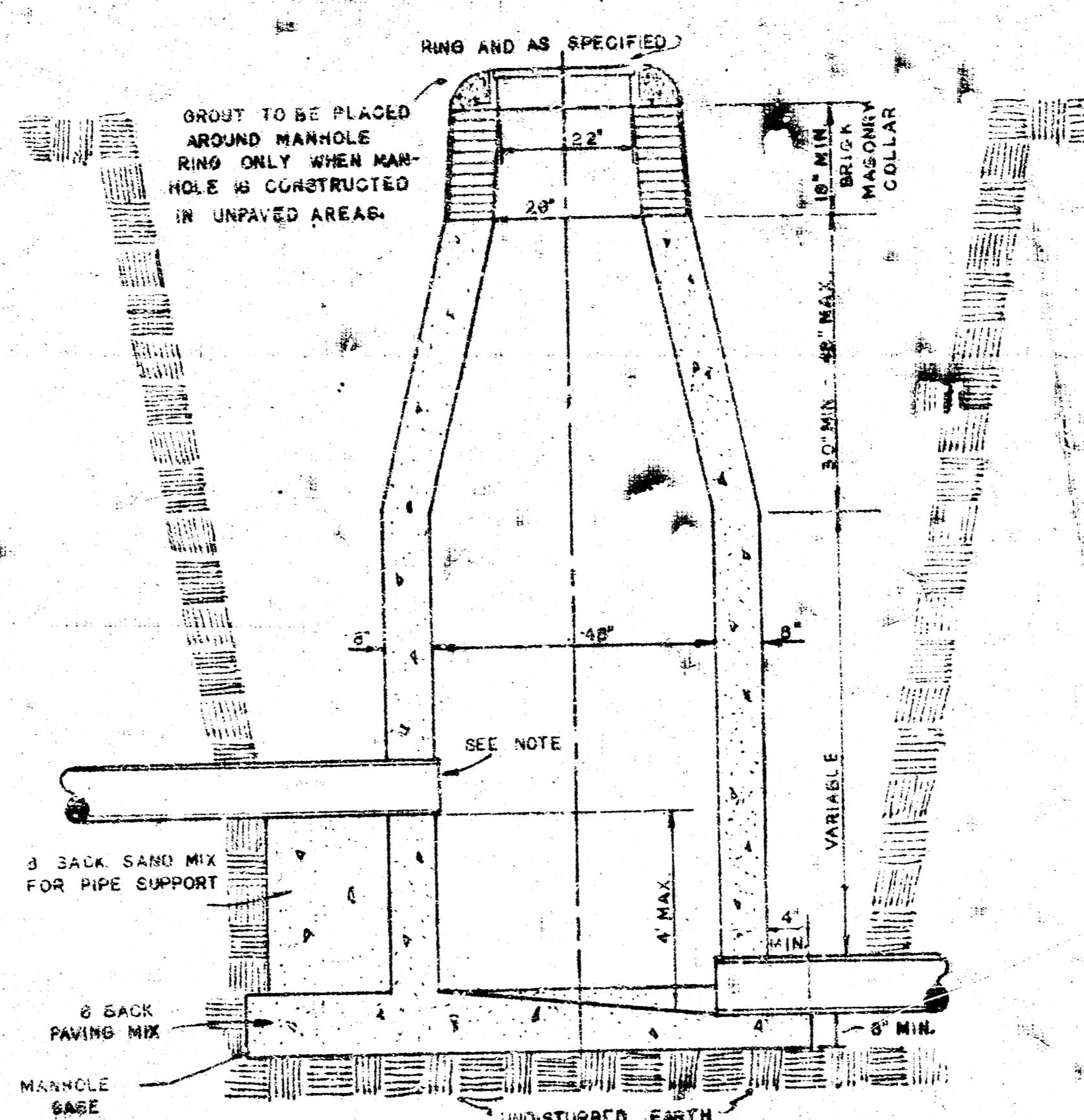
DETAILS OF  
SEWER APPURTENANCES  
ADOPTED AS STANDARD DESIGN  
BY  
ENGINEERING DIVISION  
CITY OF WICHITA, KANSAS  
R. W. LINN CITY ENGINEER  
1964

SHEET  
7  
OF 8

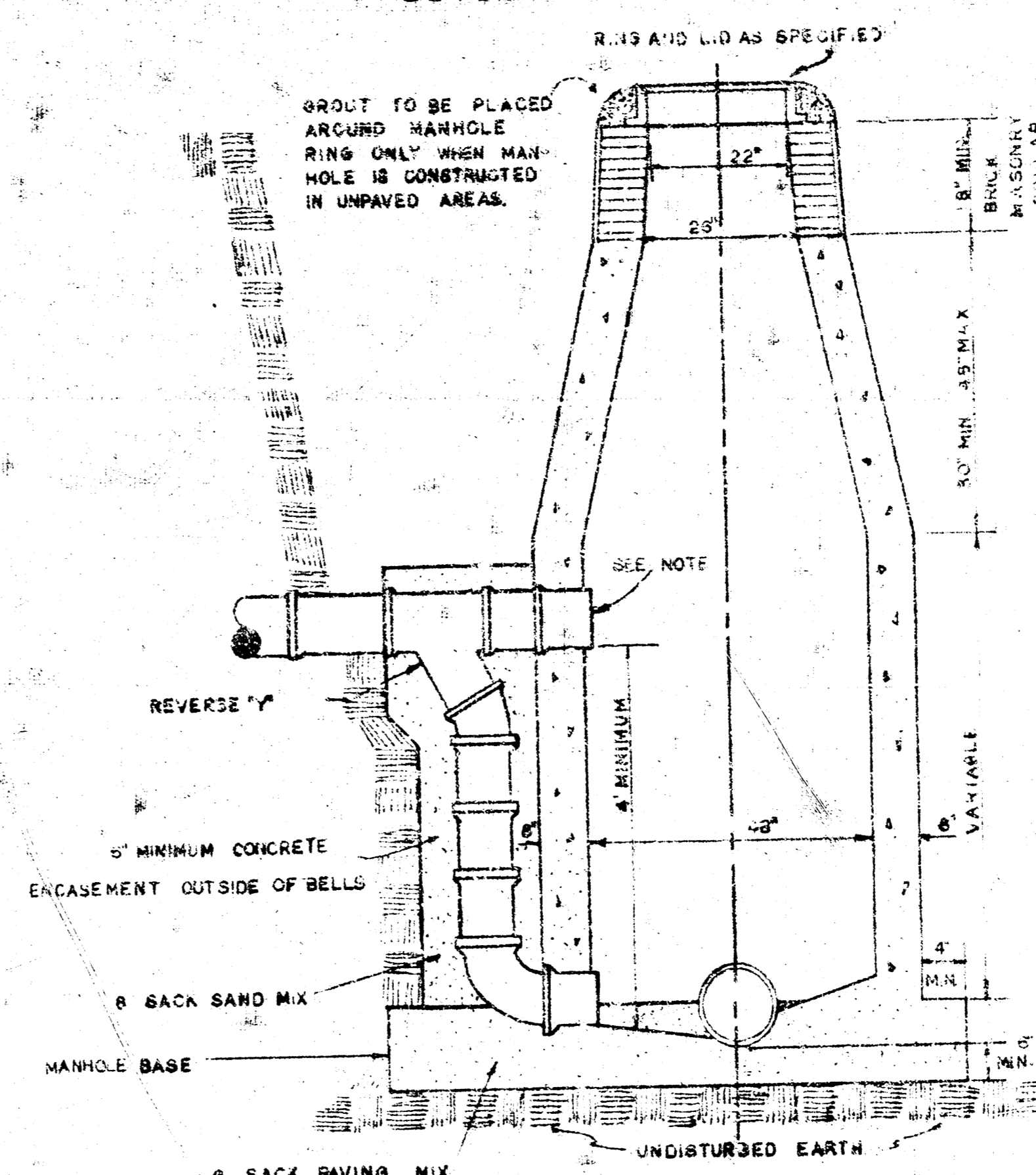
**STANDARD MANHOLE, TYPE "C"**



**DROP MANHOLE, TYPE "C"**



**OUTSIDE DROP MANHOLE, TYPE "C"**



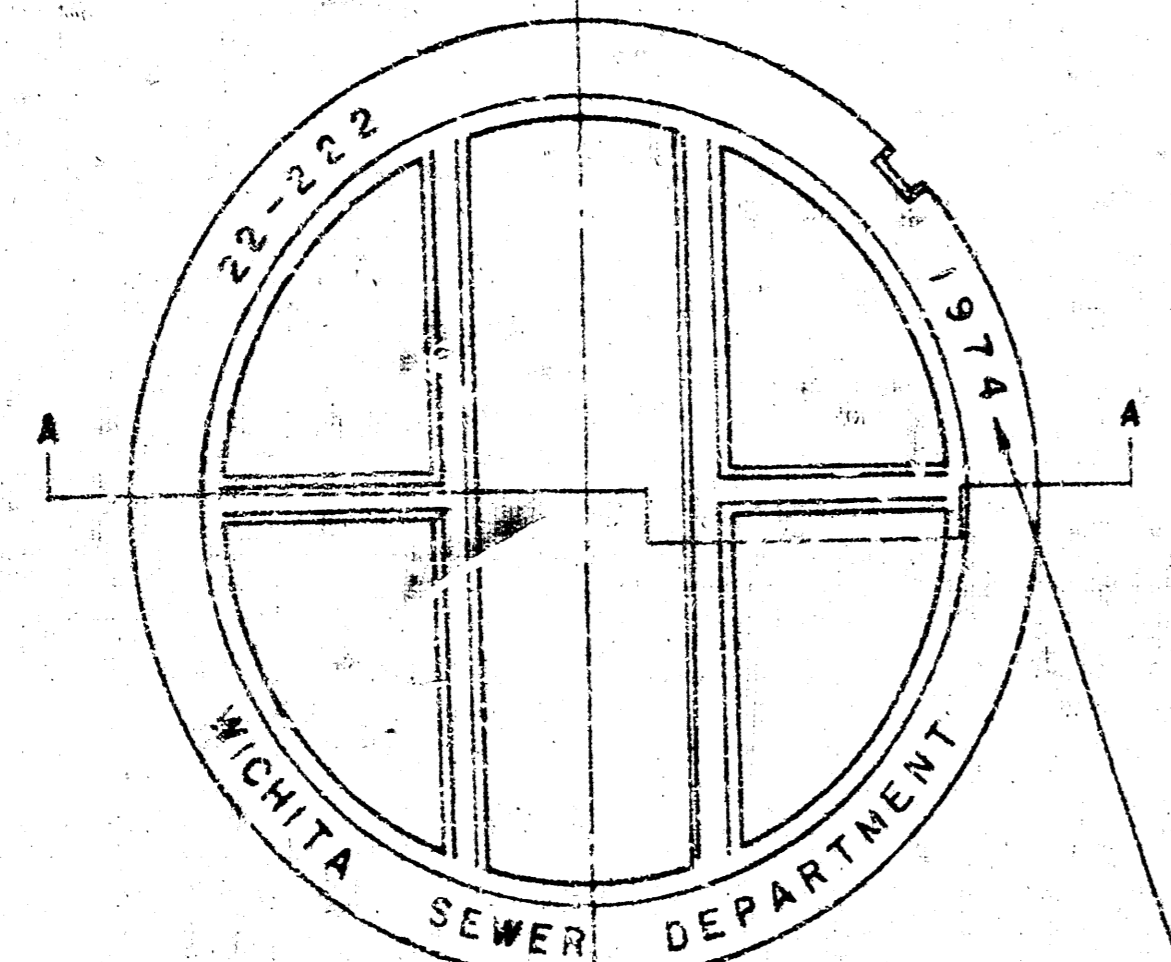
**GENERAL NOTES**  
 MORTAR USED IN MASONRY CONSTRUCTION SHALL CONTAIN 8 BAGS OF CEMENT PER CUBIC YARD.

STANDARD MANHOLES TYPE "C" AND STANDARD DROP MANHOLES TYPE "C" SHALL BE BID AS STANDARD MANHOLES FOR THE TYPE AND DIAMETER INDICATED.

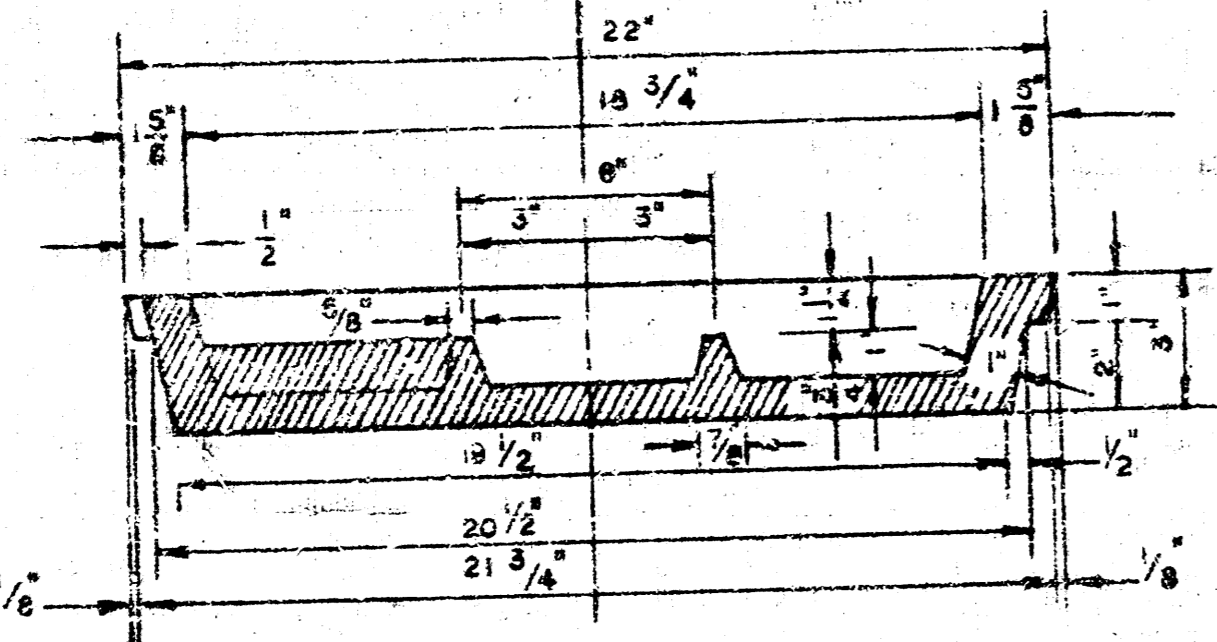
OUTSIDE DROP MANHOLES TYPE "C" SHALL BE BID AS STANDARD OUTSIDE DROP MANHOLES FOR THE TYPE AND DIAMETER INDICATED. ALL MANHOLE DIAMETERS WILL BE 4 FT UNLESS INDICATED OTHERWISE. MANHOLES WITH PIPE SIZES LARGER THAN 24" SHALL BE 3 FT DIAMETER.

THE FLOWS OF ALL MANHOLES SHALL BE SHAPED TO INCREASE HYDRAULIC EFFICIENCY USING 8 SACK SAND MIX CONCRETE.

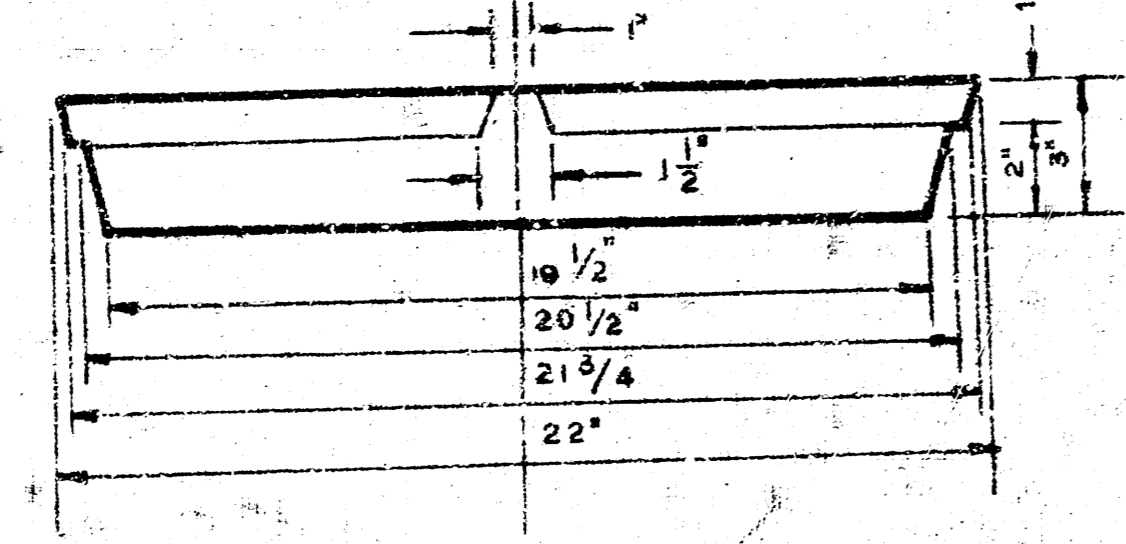
CAST IN PLACE CIRCULAR CONCRETE MANHOLES ARE TO BE CONSTRUCTED ONLY ON SEWERS NOT SUBJECT TO DETERIORATION OF CONCRETE DUE TO FORMATION OF HYDROGEN SULFIDE GAS AND IN LOCATIONS WHERE IT IS OBVIOUS THAT ANY ADJUSTMENT OF THE MANHOLE TOP ELEVATION WHICH MAY BE NECESSARY WILL NOT REQUIRE MODIFICATION OF THE CONCRETE BARREL.



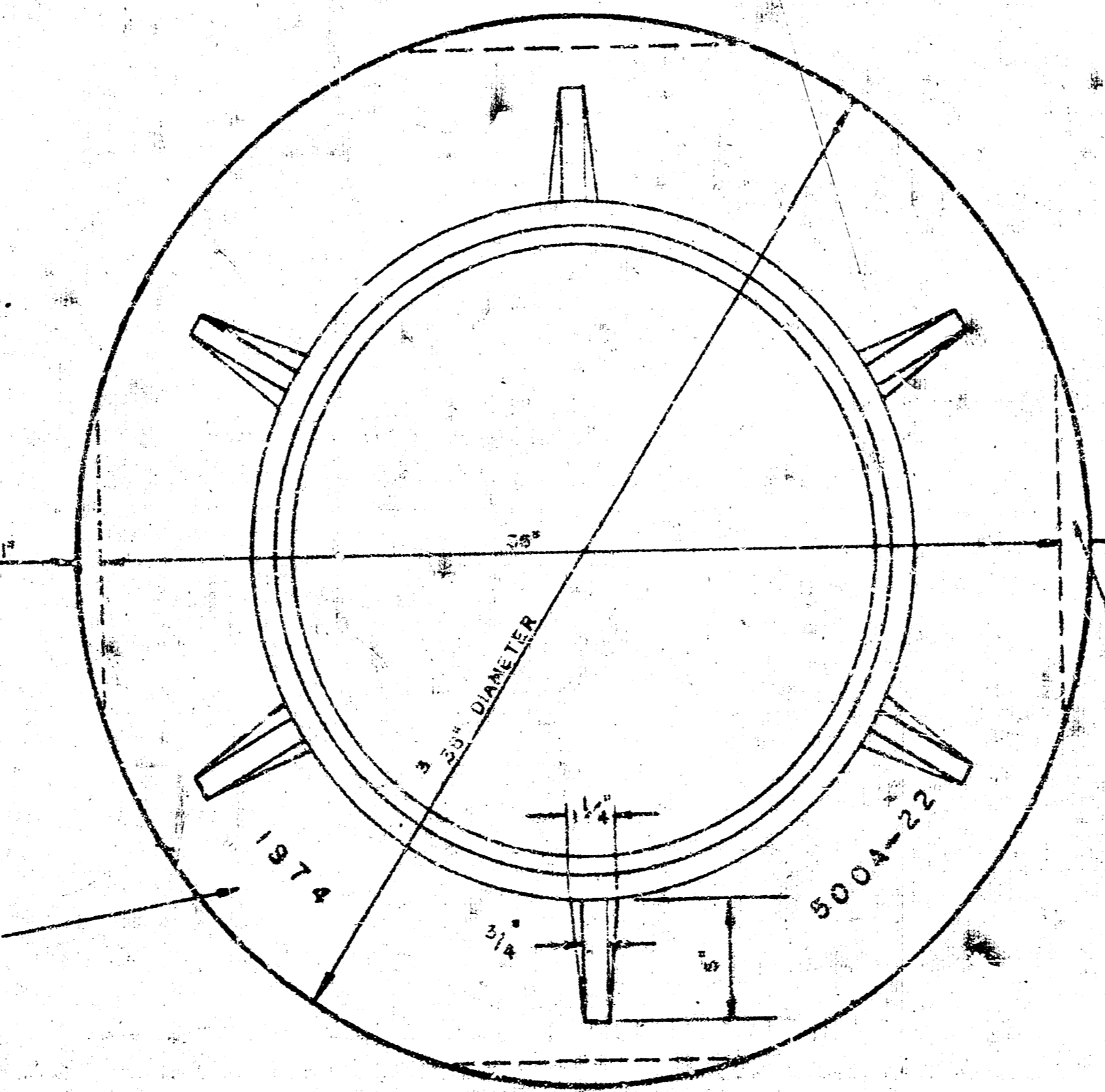
**MANHOLE COVER**  
 WEIGHT 110 LBS.



**MANHOLE COVER**



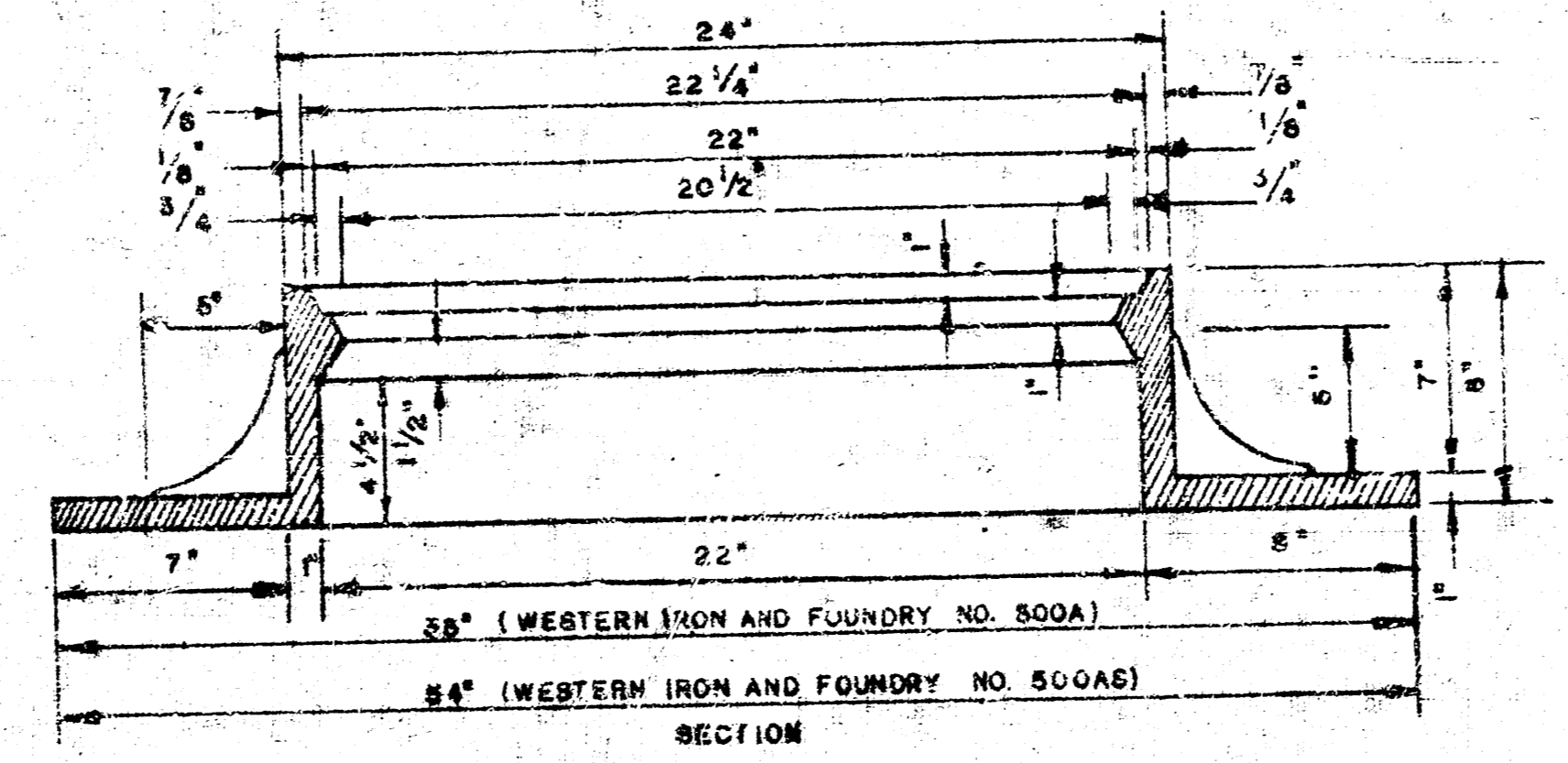
**MANHOLE COVER**



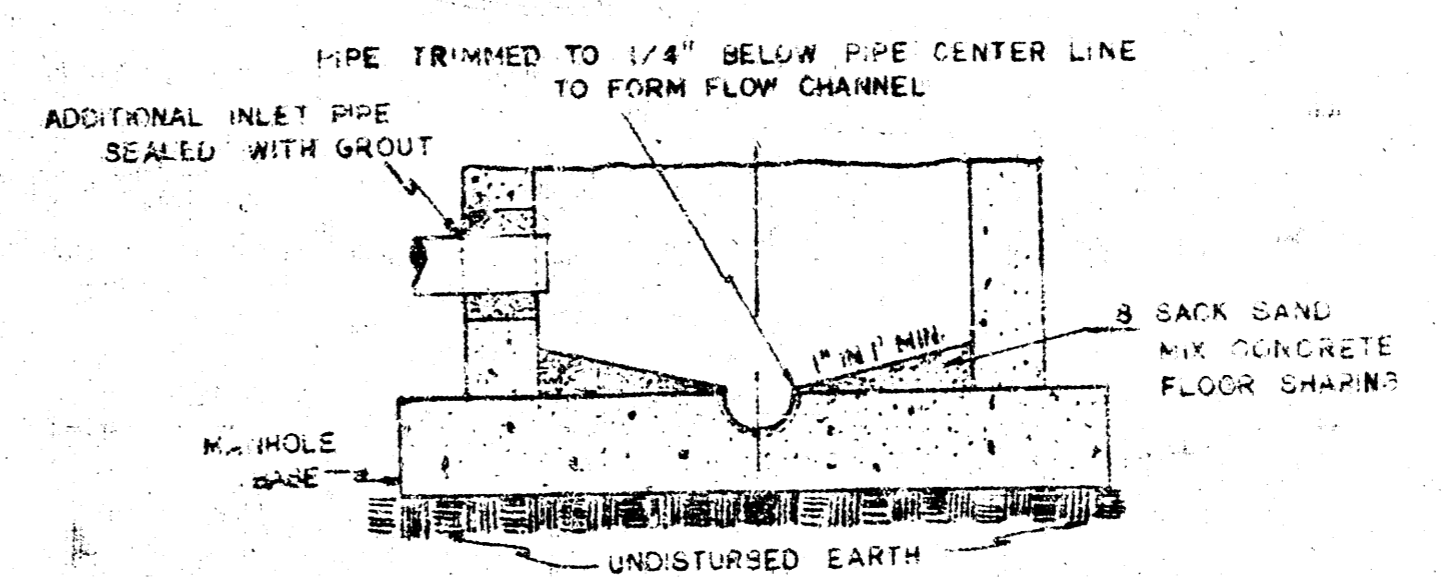
**MANHOLE RING**  
 WEIGHT 325 LBS. RING NO. 500A  
 WEIGHT 500 LBS. RING NO. 500AS

OUTSIDE CIRCUMFERENCE OF COVER AND THE INNER FACE AND SEAT OF RING TO BE MACHINE FIT.

YEAR CASTING IS MADE



**MANHOLE RING**



**SECTIONAL ELEVATION-INVERT**

NOTE: OPENING FOR INLET PIPE CUT IN MANHOLE WALL AND PIPE GROUTED IN PLACE WITH NON-SHRINKING GROUT. EXTERIOR OF COMPLETED CONNECTION TO BE SEALED WITH APPROVED COATING.

**DETAILS OF SEWER APPURTENANCES**  
 ADOPTED AS STANDARD DESIGN  
 BY  
 ENGINEERING DIVISION  
 CITY OF WICHITA, KANSAS  
 R. W. LINN CITY ENGINEER  
 1974

SHEET 8 OF 8