

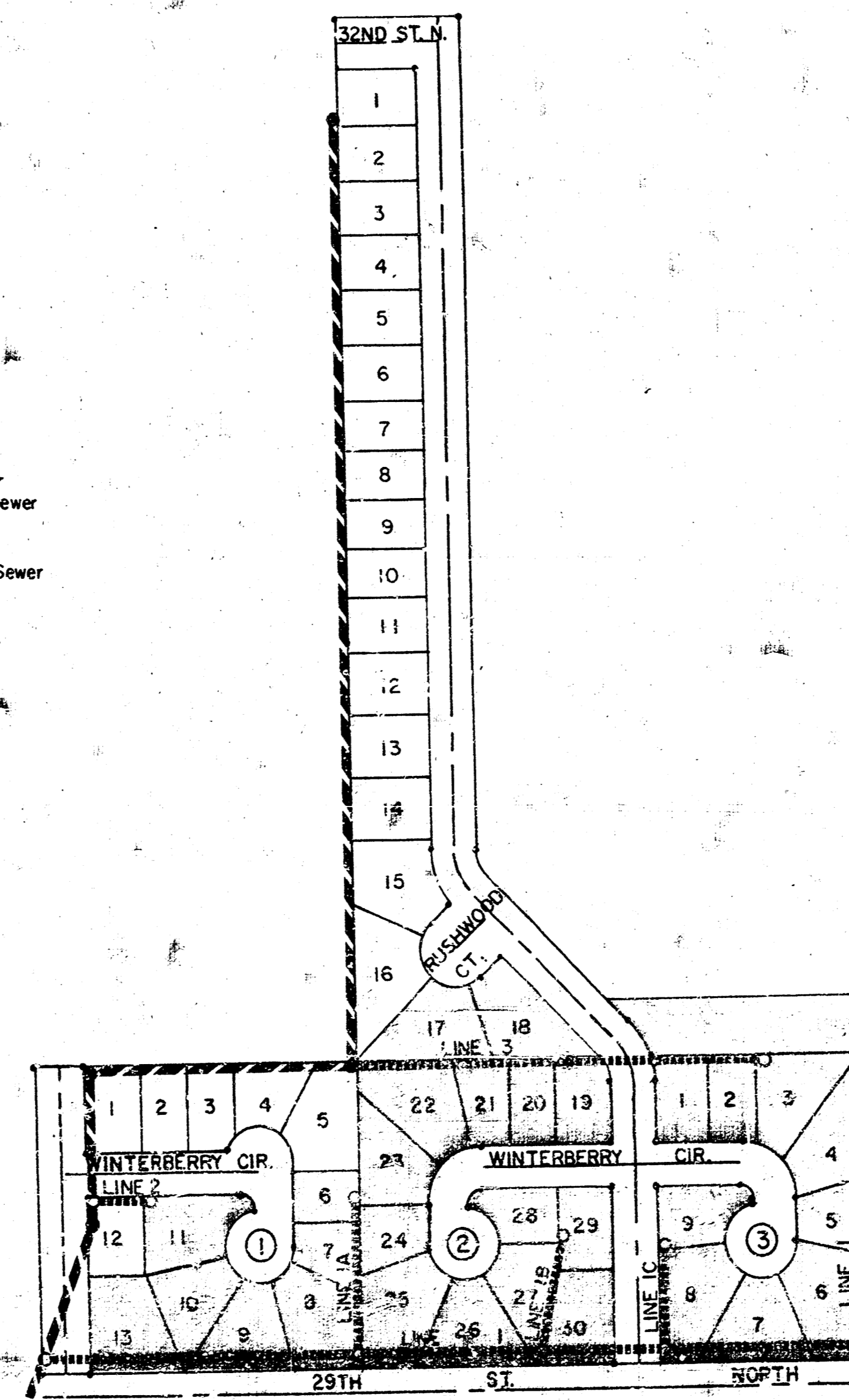
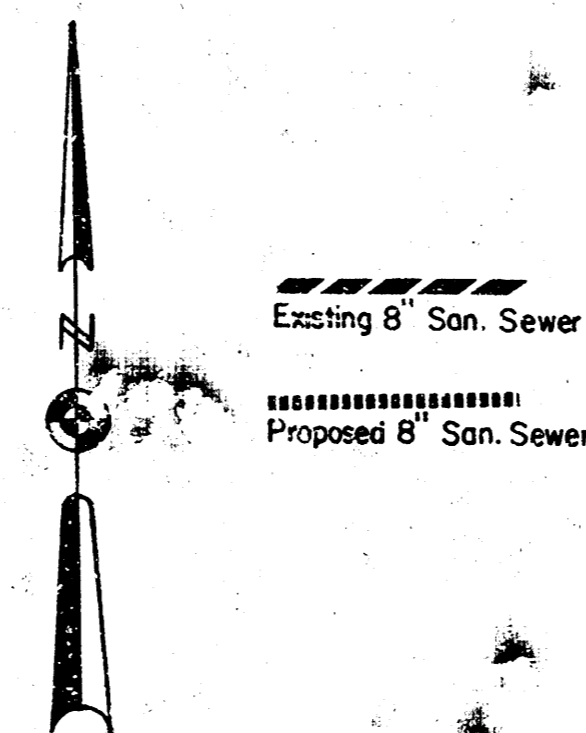
LATERAL 17, MAIN 7, S.S. NO. 23

PROJECT NO.
468-76-245-80728-000-000-001

CITY OF WICHITA, KANSAS
R.W. LINN CITY ENGINEER

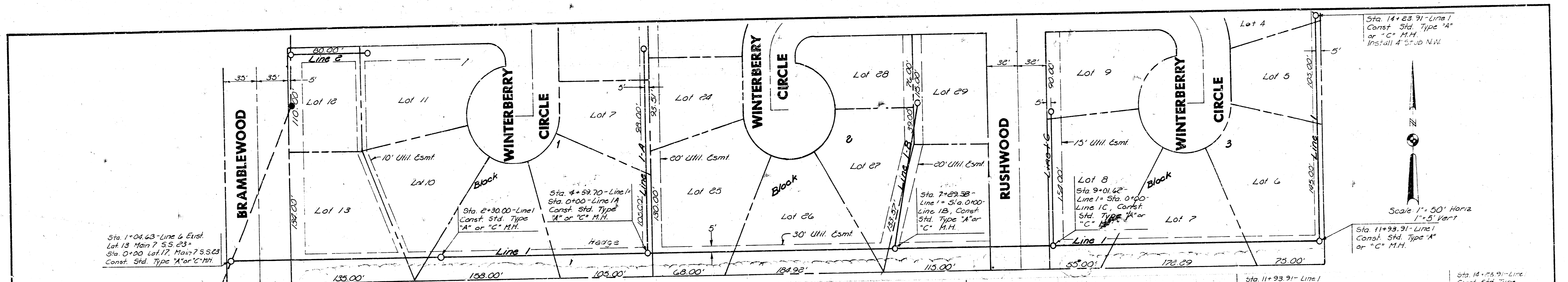
NOTE: EIGHT INCH P.V.C. PIPE SHALL BE ALSO AN APPROVED ALTERNATE PIPE ON THIS PROJECT.
 ONLY ONE TYPE OF PIPE SHALL BE USED TO COMPLETE THE PROJECT.

INDEX TO DRAWINGS	
SHEET NO.	DESCRIPTION
1	TITLE SHEET
2	LINE 1 & 3
3	LINE 1A, 1B, 1C & 2



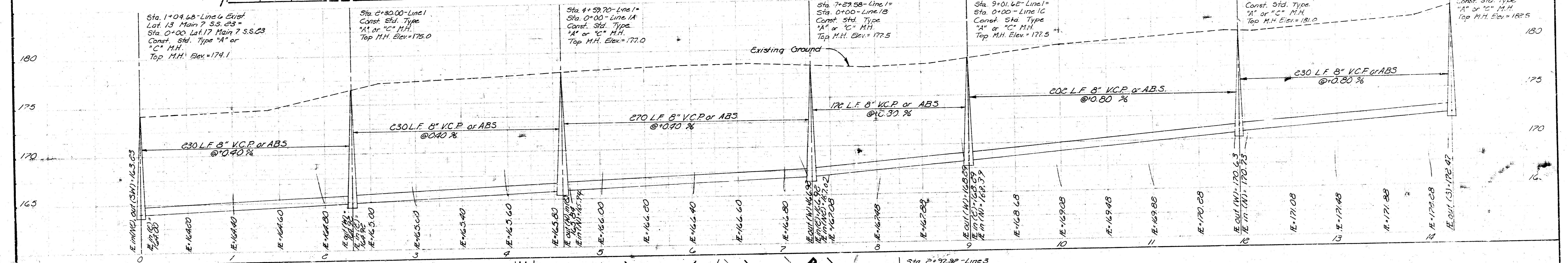
COTTONWOOD VILLAGE THIRD ADDITION

Handwritten notes:
 K...
 H. B...
 5-2-77



Sta. 14+23.91-Line 1
Const. Std. Type "A"
or "C" M.H.
Install 4" St. up N.W.

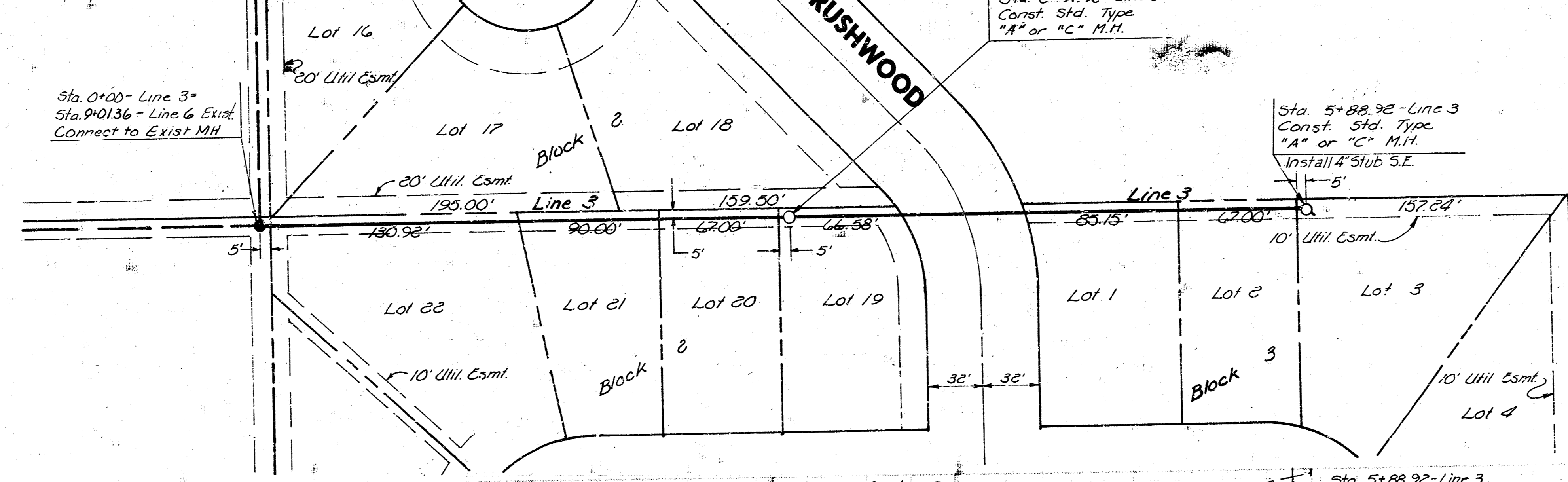
Scale: 1" = 50' Horiz
1" = 5' Vert



BM1 Chiseled "a" SW cor N Headwall 2nd culvert
E of Woodlawn on 29th Street North
Elev = 175.28

BM2 Chiseled "a" SW cor N Headwall 3rd culvert
E of Woodlawn on 29th Street North
Elev = 181.08

BM3 Chiseled "a" Top of N Headwall RCB 29' W
17' N of Woodlawn & 29th Street North
Elev = 175.85



Scale: 1" = 50' Horiz
1" = 5' Vert

