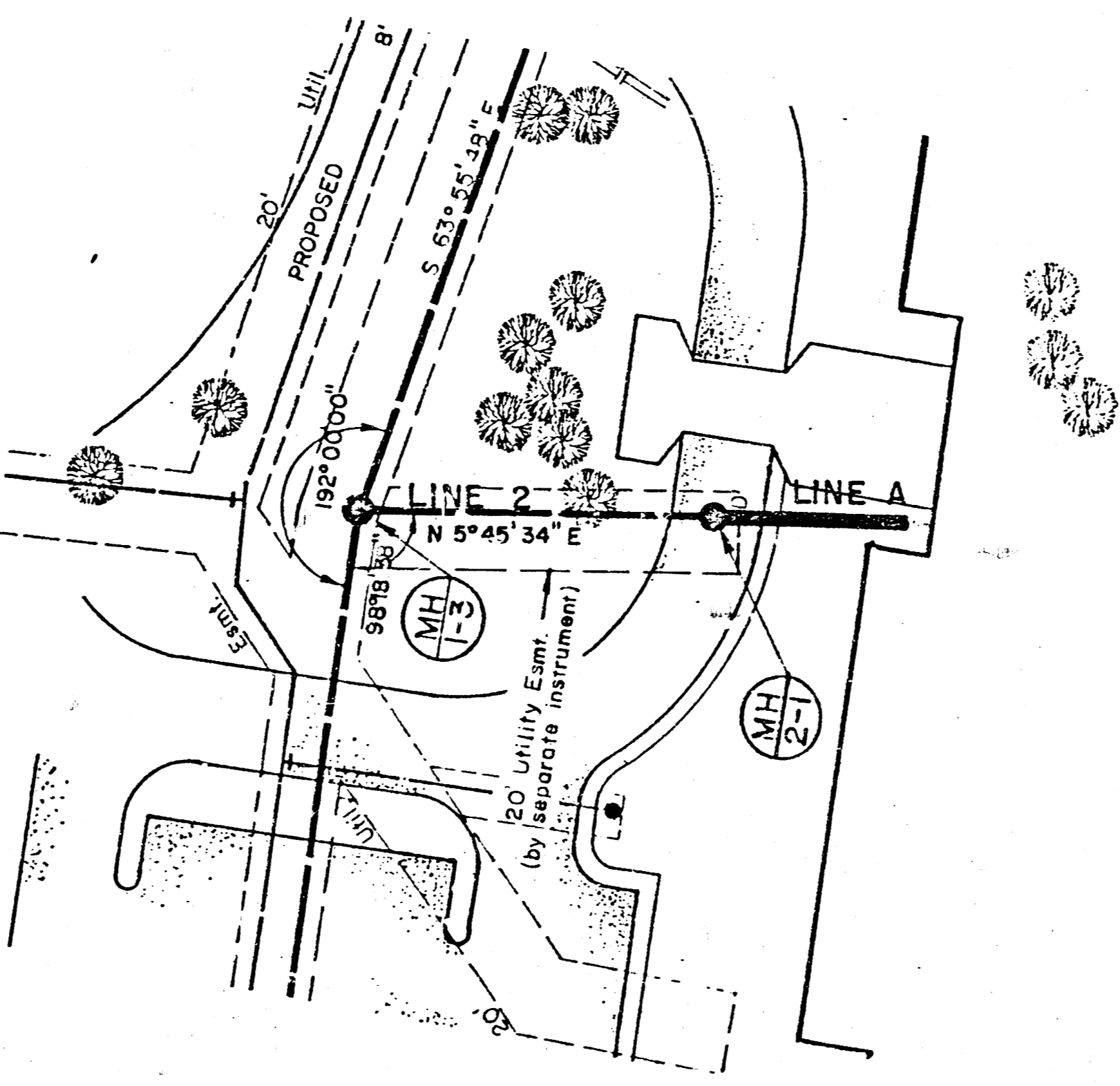
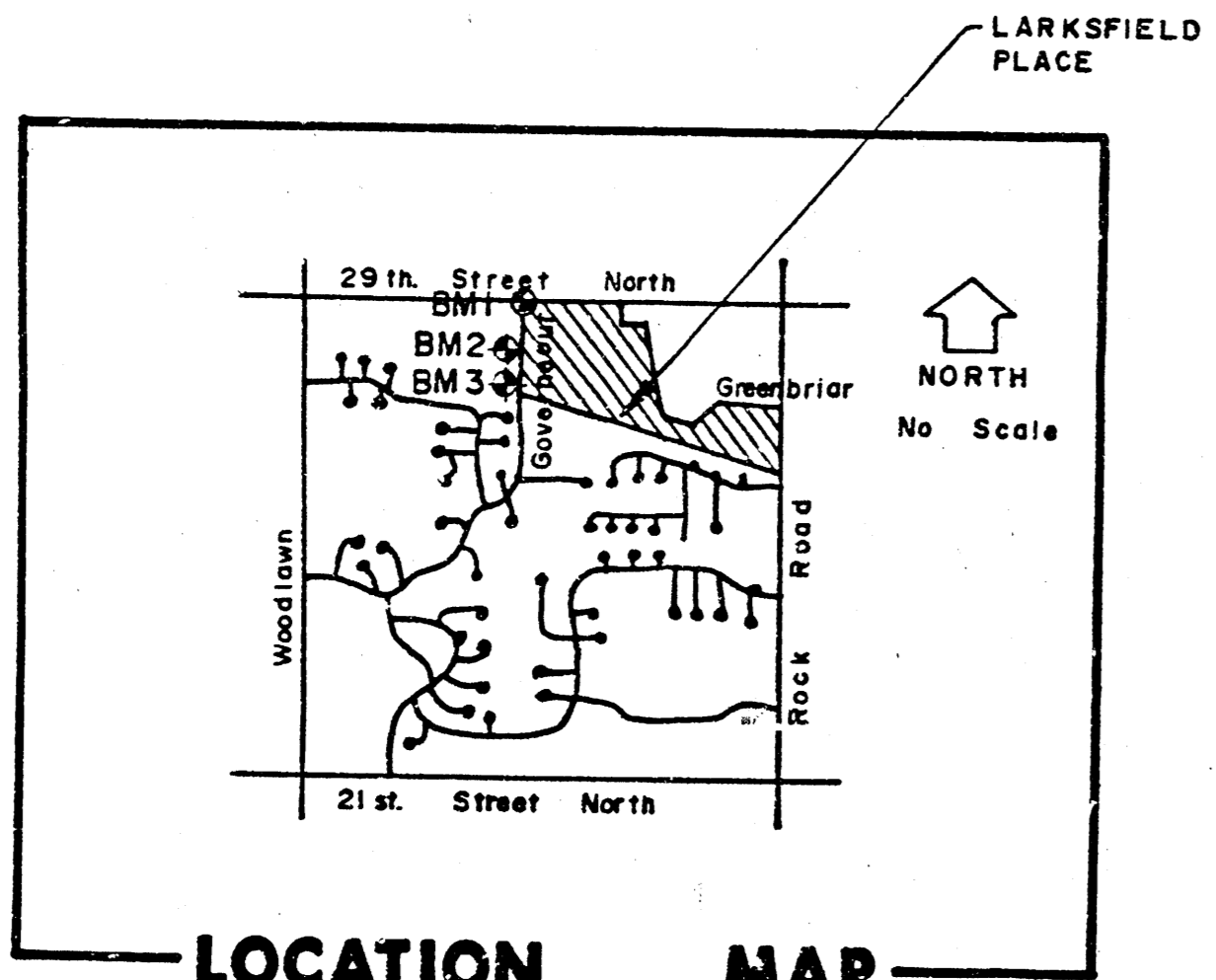


LARKSFIELD PLACE
 LAT. 40, MAIN 7, SANITARY SEWER #23
 PROJ. NO. 468-76-245-80001-000-000-138



Scale: 1" = 40' Horiz.
 1" = 5' Vert.

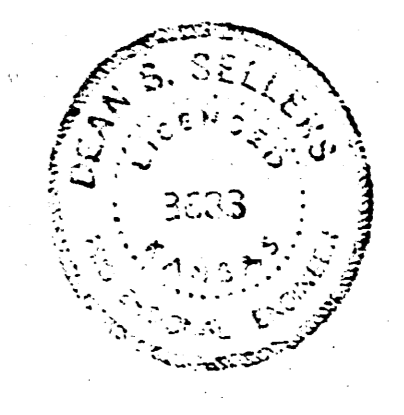
APPROVED AS NOTED
 By CITY ENGINEER OF WICHITA
 Sanitary Sewers *[Signature]*
 Storm Sewers _____
 Driveway Approaches _____
 Water Mains _____

NOTE TO CONTRACTOR
 This project will be constructed under the supervision of the CITY ENGINEER and conforming to the SPECIFICATIONS of the CITY OF WICHITA. The CONTRACTOR will pay the City of Wichita for all costs of plan review, inspection and booking per contract.

- B.M. #1 Gouverneur & 29th Street North, City of Wichita Bench Mark Disc., 75' West and 30.3' North of Quarter Section Corner 55' North and 85' West of Center Line of Pavement Gouverneur and 29th Street North. Elevation 182.576.
- B.M. #2 Railroad Spike in West face of West leg of "H" Pole Structure + 500' South of 29th Street North on the West side of Gouverneur. Elevation 187.88u
- B.M. #3 Railroad Spike in West face of West leg of "H" Pole Structure + 1,000' South of 29th Street North on the West side of Gouverneur. Elevation 191.85

PLAN LINE A

NOTE:
 THIS SHEET IS INCLUDED WITH THE PLANS FOR CONSTRUCTION OF LATERAL 40, MAIN 7, SANITARY SEWER NO. 23, FOR THE PURPOSE OF FILING AND RECORD KEEPING. THIS LINE (A) IS TO BE A PRIVATE SEWER CONSTRUCTED WITH PRIVATE FINANCING.



Not built as of 7-90

PROFILE LINE A

