

CONSTRUCTION PLANS
 LATERAL 43, MAIN 9, SANITARY SEWER NO. 23
WHISPERING BROOK ADDITION
 TO
THE CITY OF WICHITA, KANSAS
 MICHAEL E. LINDEBAK, P.E. - CITY ENGINEER

PROJECT NO. 468-82163

INDEX NO. 740985

GENERAL NOTES:

1. Underground utility service lines and overhead utility pole lines are to be adjusted as necessary by other prior to construction unless the plans specifically call for their adjustment by the Contractor or unless the plans specifically identify a utility to be adjusted by its owner during construction. Existing utilities and their location, as shown on the plans, represent the best information obtainable for design. The Contractor will be required to work around existing utilities within the right-of-way which do not conflict with proposed construction.

2. Rubble from the removal of miscellaneous structures and excess excavation which is to be wasted shall be disposed of on sites to be provided by the Contractor. These sites shall be approved by the Engineer as to suitability, appearance and site location. Locations that, in the opinion of the Engineer, will leave an unsightly appearance will not be approved.

All disposal sites must be approved by the Kansas Department of Health and Environment. Material either stockpiled or disposed of in a flood plain would require a Kansas State Board of Agriculture permit. Any material dumped in waters of the United States or wetlands is subject to U.S. Corps. of Engineers permitting regulations. Any material buried or stockpiled beyond approved construction limits would require additional archaeological investigations unless buried in a previously approved borrow location.

3. The Contractor shall be responsible for maintaining continuous flow of sewage through construction. Contractor's proposed method for maintaining sewage flow shall be approved by the Engineer. Cost of maintaining flow of sewage through construction will not be paid for directly and this cost shall be considered as subsidiary to the other pay items of work.

4. The Contractor shall be responsible for preserving property irons. Contractor will be required to re-establish any property irons which are damaged or destroyed by his construction operations. Such irons shall be re-established by a licensed land surveyor or a licensed professional engineer in accordance with state laws.

5. All lawn/turf areas disturbed by construction of the proposed improvements shall be restored with the same grass/sod as existing. Restoration of disturbed areas shall include, but not be limited to, topsoil preparation, seeding, mulch, and/or reseeding. All seeding/sodding work shall be in accordance with the City of Wichita Standard Specifications and the City of Wichita Administrative Regulation No. AR78 which governs cleanup and restoration or replacement following construction.

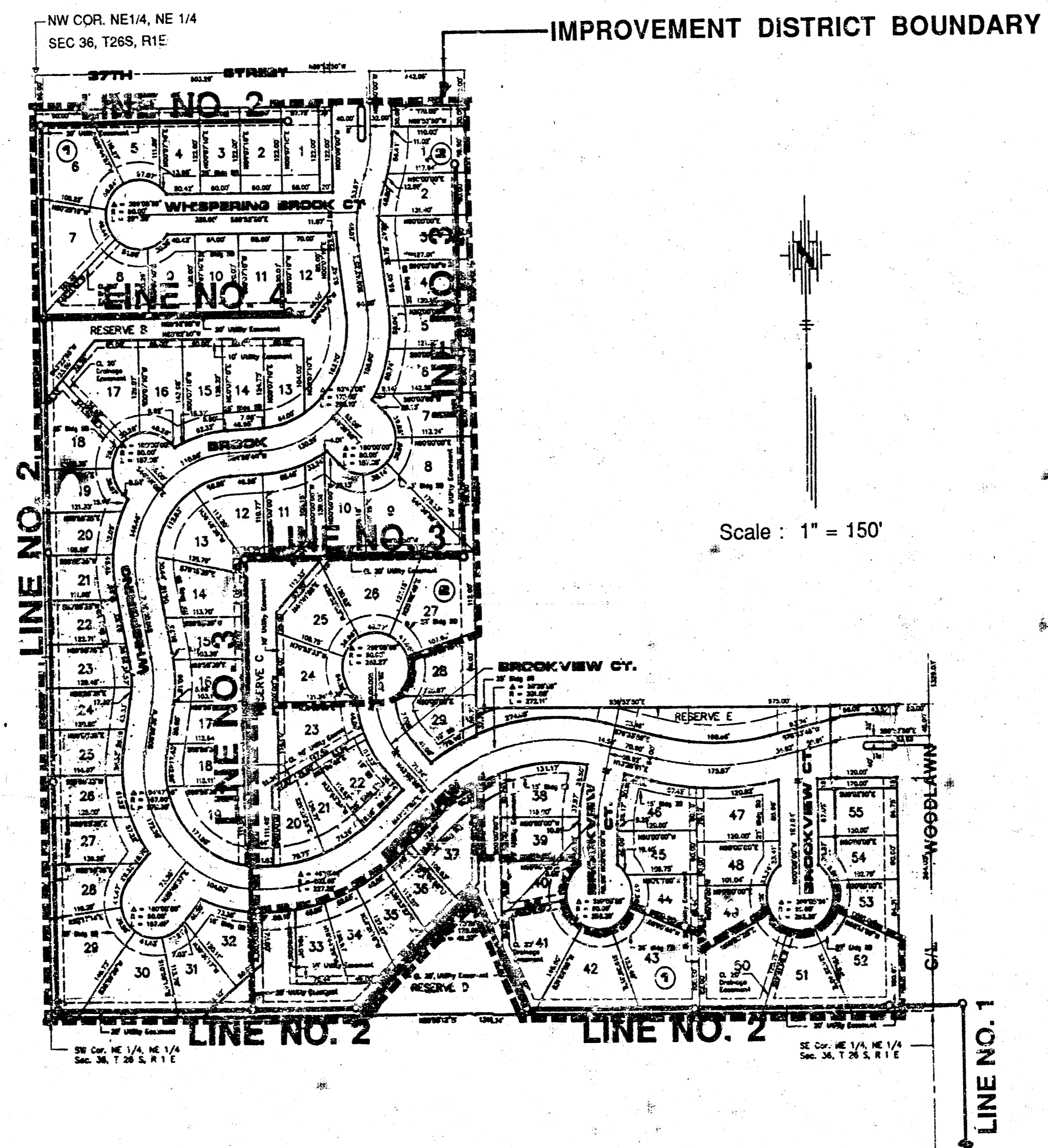
6. A saw cut of at least one-half the depth of existing surface courses or one-fourth the depth of the existing total pavement thickness shall be provided at locations where proposed construction abuts an existing surface course or pavement for which partial removal of that surface or pavement is required. Sawed joint to facilitate removal within 3 feet (3') of existing joints will not be permitted and for such instances the limits of removal shall extend to the existing joint. Such saw cuts will not be paid for directly and this cost shall be considered as subsidiary to the removal of the surface or pavement.

7. Trees and shrubs in public right-of-way which are in direct conflict with proposed new construction shall be removed by the Contractor with the Engineer's approval. Trees and shrubs which are not in direct conflict with proposed new construction shall be saved and protected from damage.

8. The Contractor shall give all property owners and/or tenants of developed property abutting the construction of this project a minimum of ten (10) days advance notice prior to start of construction.

9. Pavement removal and/or replacement will be measured and paid for on the lineal foot basis as measured along the centerline of the sewer regardless of width or thickness. Minimum limits of such pavement removal and replacement shall be one foot beyond the limits of the excavation made for the sewer or the structure, except when the lines of removal are within three (3) feet of an existing joint. Removal and replacement of existing pavement shall conform to the applicable sections of the City of Wichita Standard Specifications.

10. Grade all easements to match existing ground unless otherwise shown.



INDEX

TITLE SHEET	SHEET 1
LINE NO. 1	SHEET 2
LINE NO. 2	SHEET 3
LINE NO. 2	SHEET 4
LINE NO. 2	SHEET 5
LINE NO. 2	SHEET 6
LINE NO. 3	SHEET 7
LINE NO. 3	SHEET 8
LINE NO. 4	SHEET 9
STANDARD MANHOLE TYPE "P"	SHEET 10
STANDARD MANHOLE TYPE "C"	SHEET 11
RECORDED PLAT OF:	SHEET 12
WHISPERING BROOK ADDITION	

BENCH MARKS

(City of Wichita Data)

- City of Wichita std. BM disc. at 37th & Edgemoor. 39' N. & 44' E. of 1/4 Section Corner. Elev. 193.66
- Railroad Spike in N. face power pole. 110' W. & 30' S. of NW Cor. NE 1/4, NE 1/4 Sec. 36-26-1E Elev. 188.67
- Top of iron pipe at SW Cor. of NE 1/4, NE 1/4 Sec. 36-26-1E. (SW Cor. Lot 29, Block 1) Elev. 182.35
- Top of steel "T" post driven flush with the ground, 5' N & 55' W of SE Cor. NE 1/4, NE 1/4 Sec. 36. Elev. 178.07
- City of Wichita std. BM disc at 37th & Woodlawn. 65.7' E. & 56.3' S of center of intersection. Elev. 183.04

*AS BUILT
RDL
9-92*

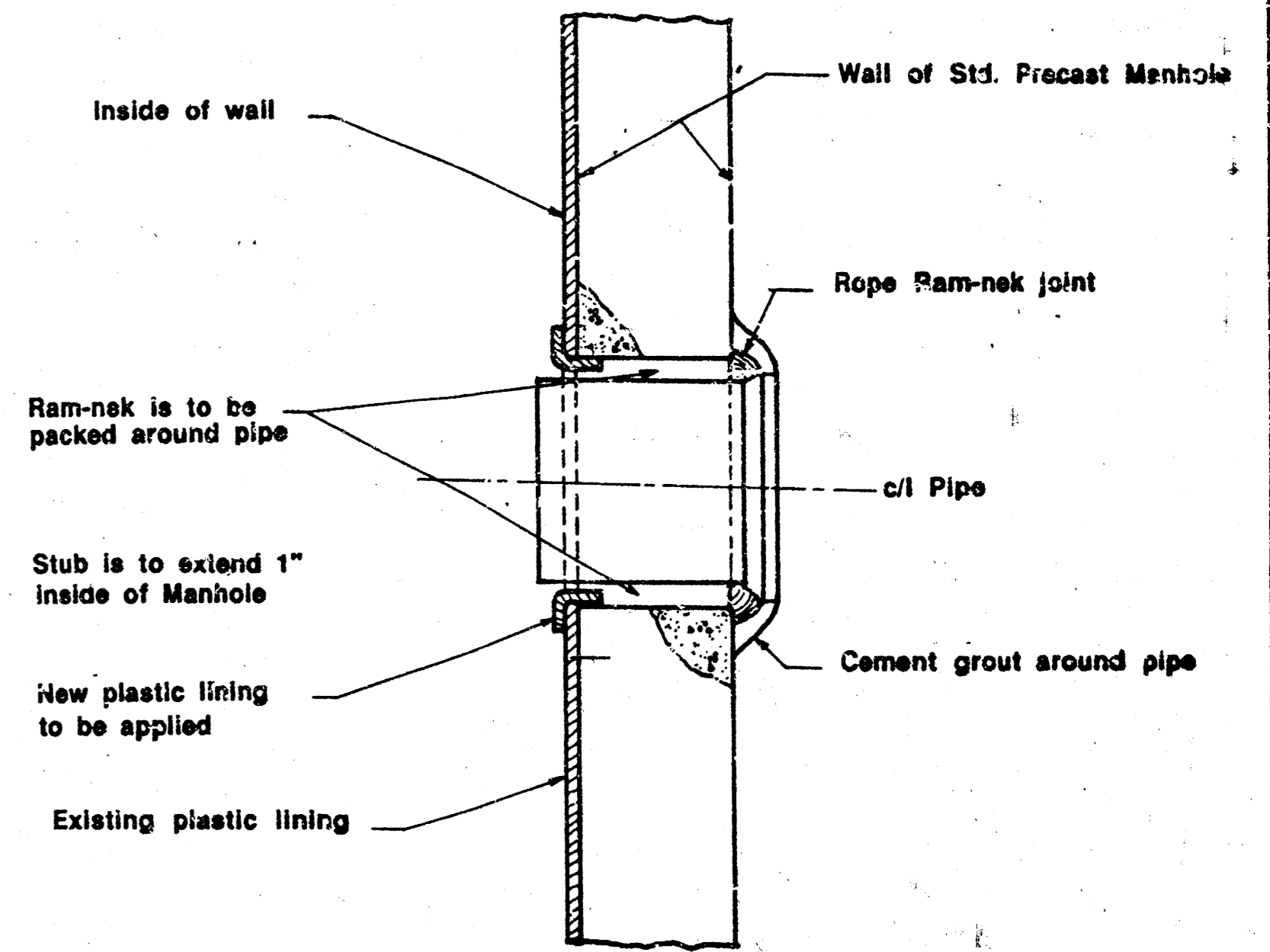
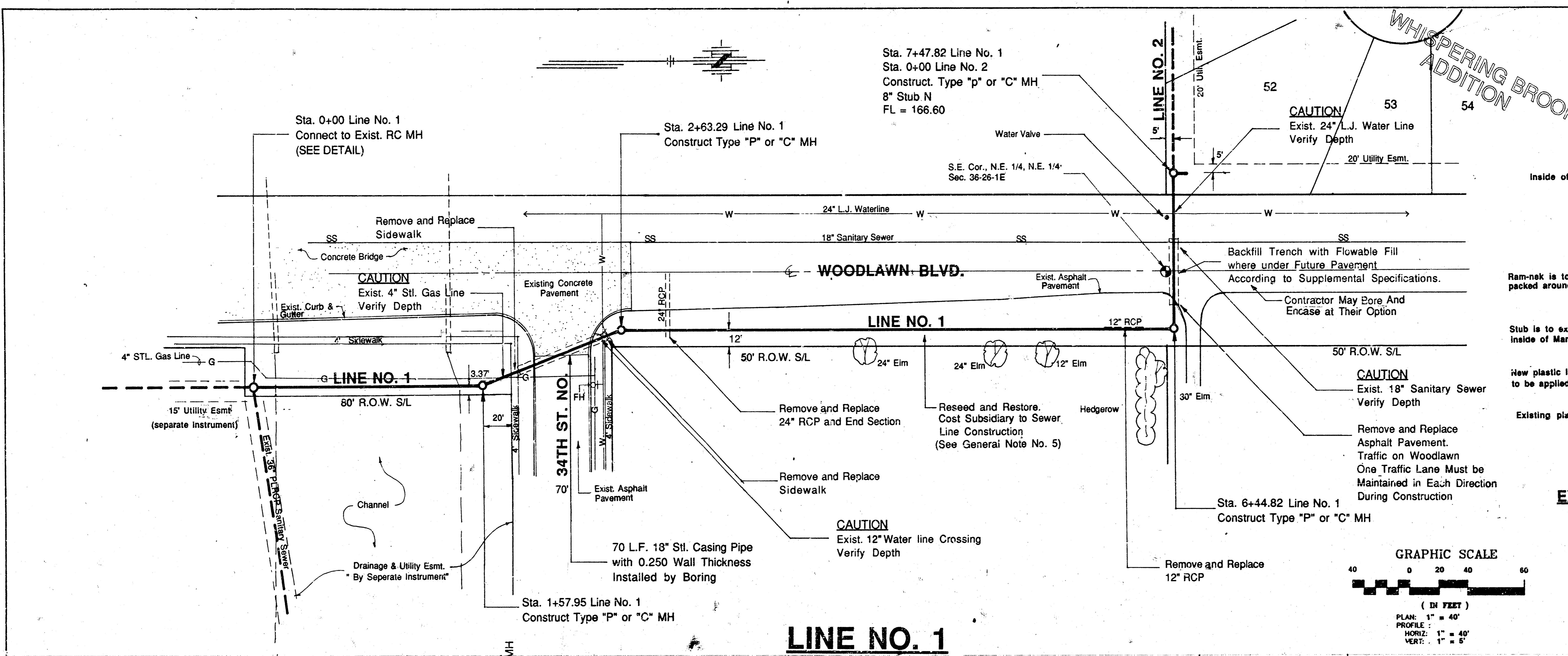
NOVEMBER 1991
PLANS PREPARED

BY
POE & ASSOCIATES OF KANSAS INC.
 CONSULTING ENGINEERS
434 N. Oliver, Suite 110 Wichita, KS 67208 316/945-4114

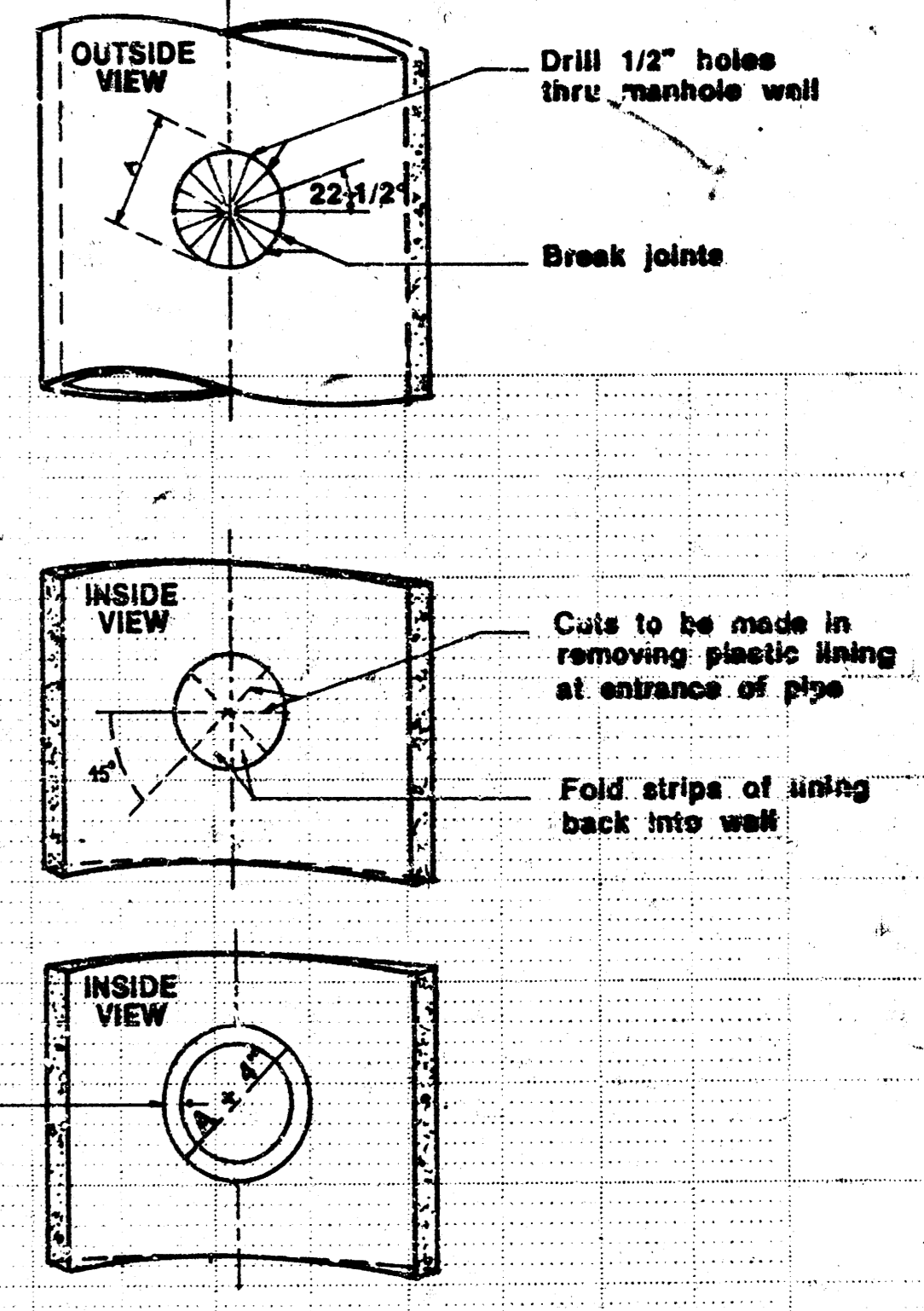
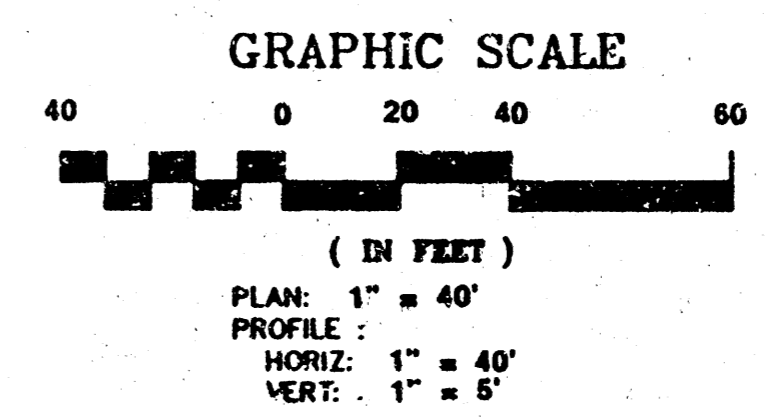


DATE	BY
DATE	BY
DATE	BY

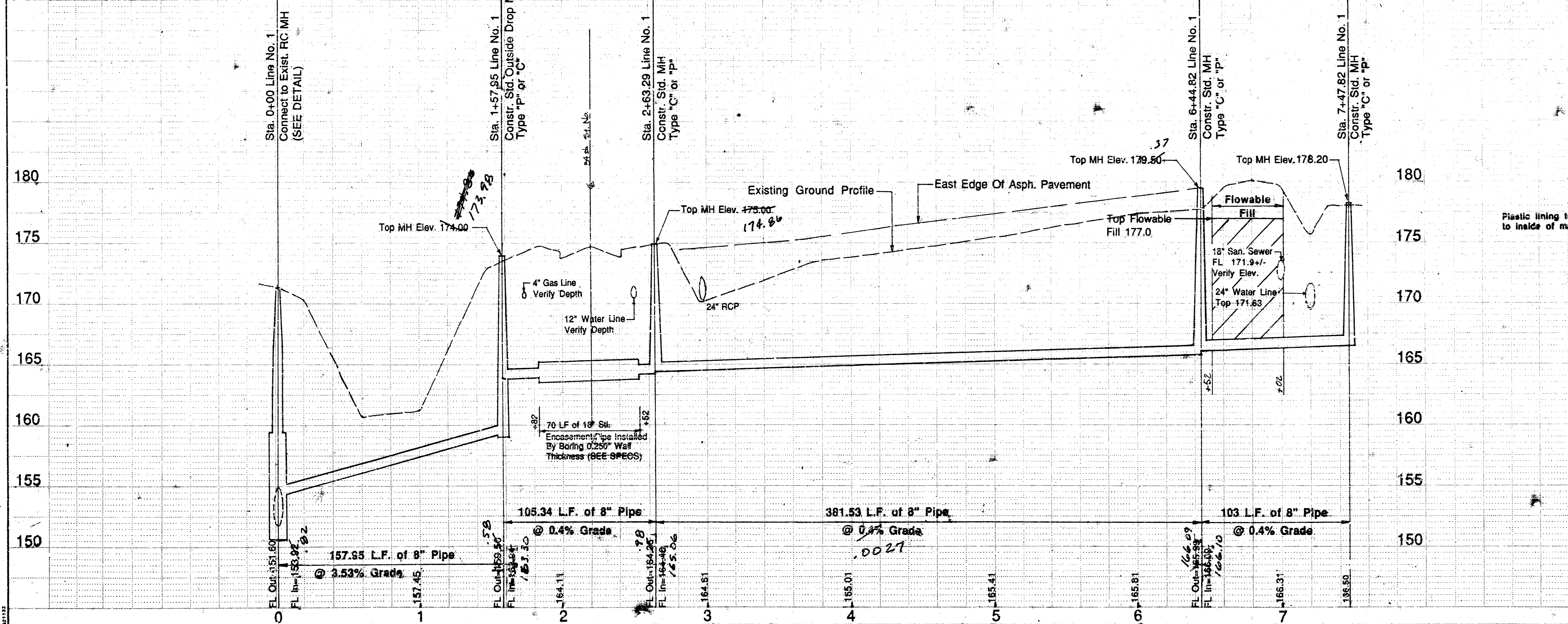
DATE	BY
DATE	BY
DATE	BY



EXISTING MANHOLE CONNECTION DETAIL
NO SCALE



A = OUTSIDE DIAMETER OF PIPE + 2"



LISTING OF CURRENTLY SET COORDINATE POINTS

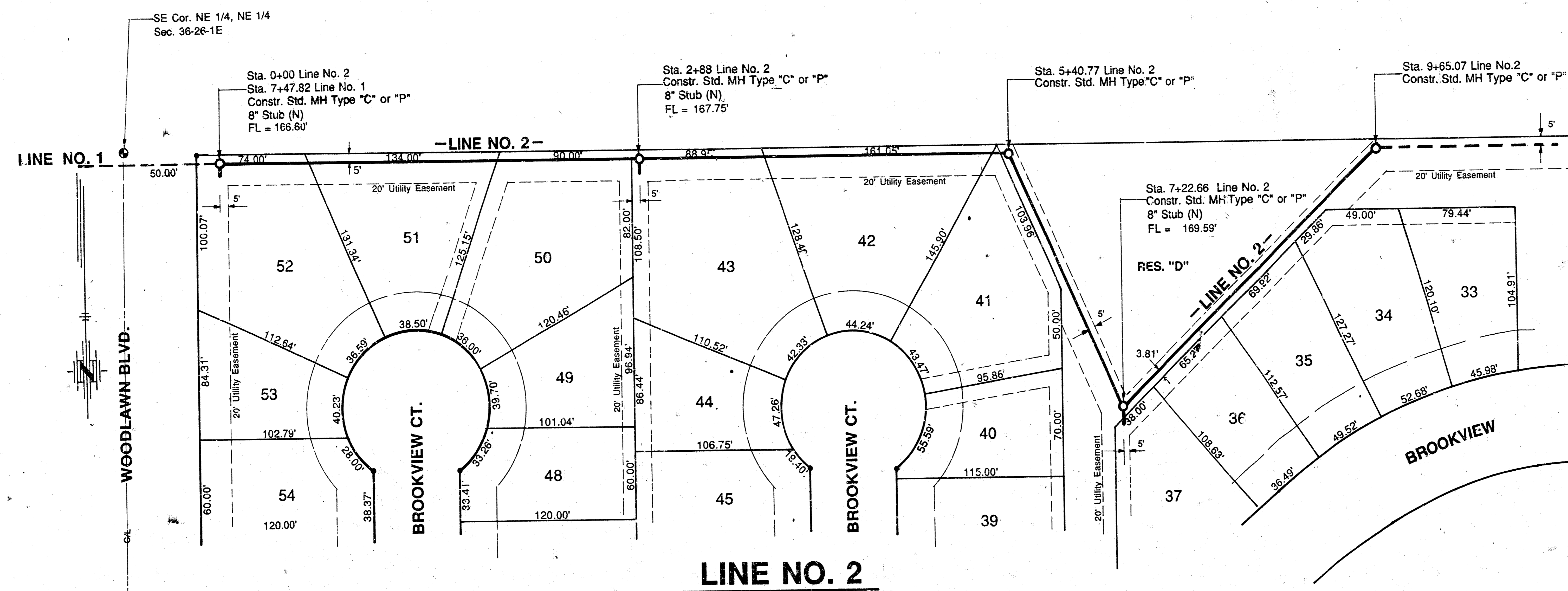
STATION	(N)	(E)
0 + 00	3038.3800	5075.7460
1 + 57.95	3198.3330	5075.9870
2 + 63.29	3294.3870	5037.4740
6 + 44.82	3675.9170	5038.0870
7 + 47.82	3675.0610	4935.0000

POE & ASSOCIATES OF KANSAS INC.
CONSULTING ENGINEERS
434 N. Oliver, Suite 110 • Wichita, KS 67208 • 316-855-4114

ENGINEER: K. P. POE
ENGR. TECH: R. JOHNSON
DRAWN BY: R. JOHNSON
DATE: NOV. 1991
SHEET: 2 OF 12

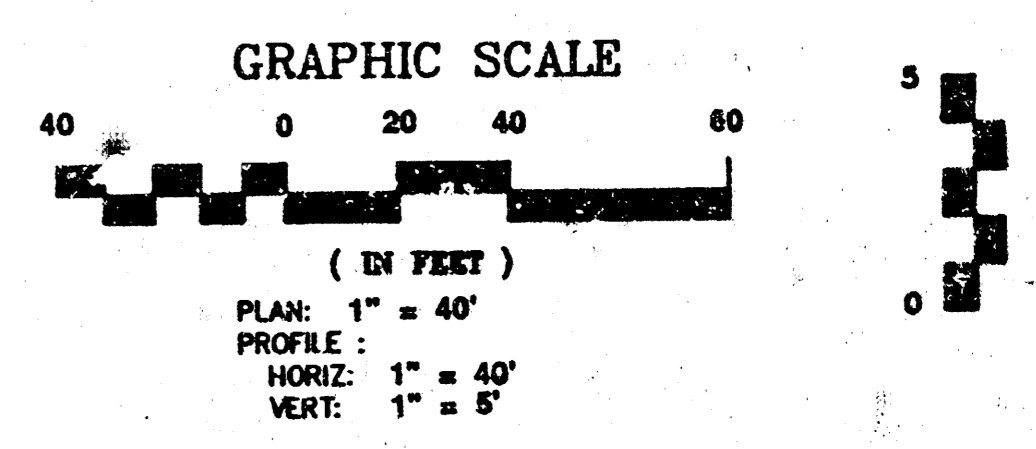
Whispering Brook Addition
Sanitary Sewer - Line No. 1
CITY OF WICHITA, KANSAS
Project No. 468-82133
Index Code 7200

STATE	PROJECT NO.	FISCAL YEAR	SHEET NO.	TOTAL SHEETS
-------	-------------	-------------	-----------	--------------



LISTING OF CURRENTLY SET COORDINATE POINTS

STATION LINE NO. 2	(N)	(E)
0 + 00	3676.0608	4935.0000
2 + 88	3676.4631	4647.0000
5 + 40.77	3676.8162	4394.2320
7 + 22.66	3842.4145	4319.3000
9 + 65.07	3677.1690	4141.6460

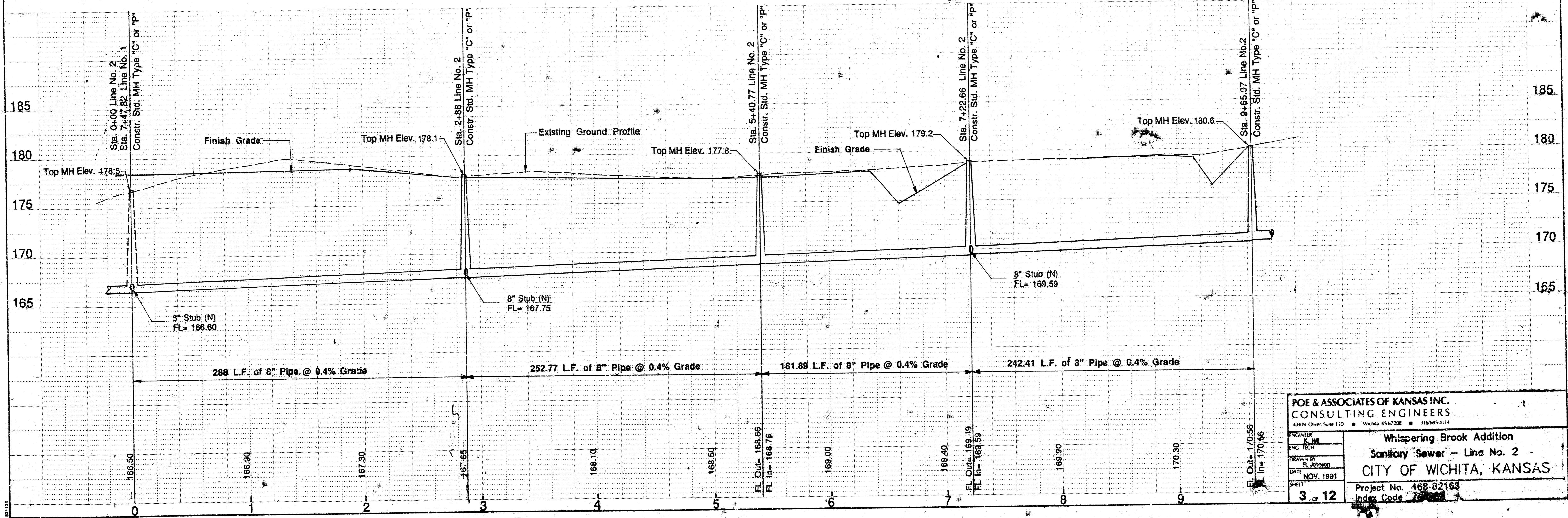


PLAN

DATE	BY
DESIGNED	PROF.
CHECKED	ENGR.
NOTED	NO. 1
NO. 2	

PROFILE

DATE	BY
DESIGNED	PROF.
CHECKED	ENGR.
NOTED	NO. 1
NO. 2	



FOE & ASSOCIATES OF KANSAS INC.
CONSULTING ENGINEERS
434 N. Chitt. Suite 110 • Wichita, KS 67208 • 316-265-1114

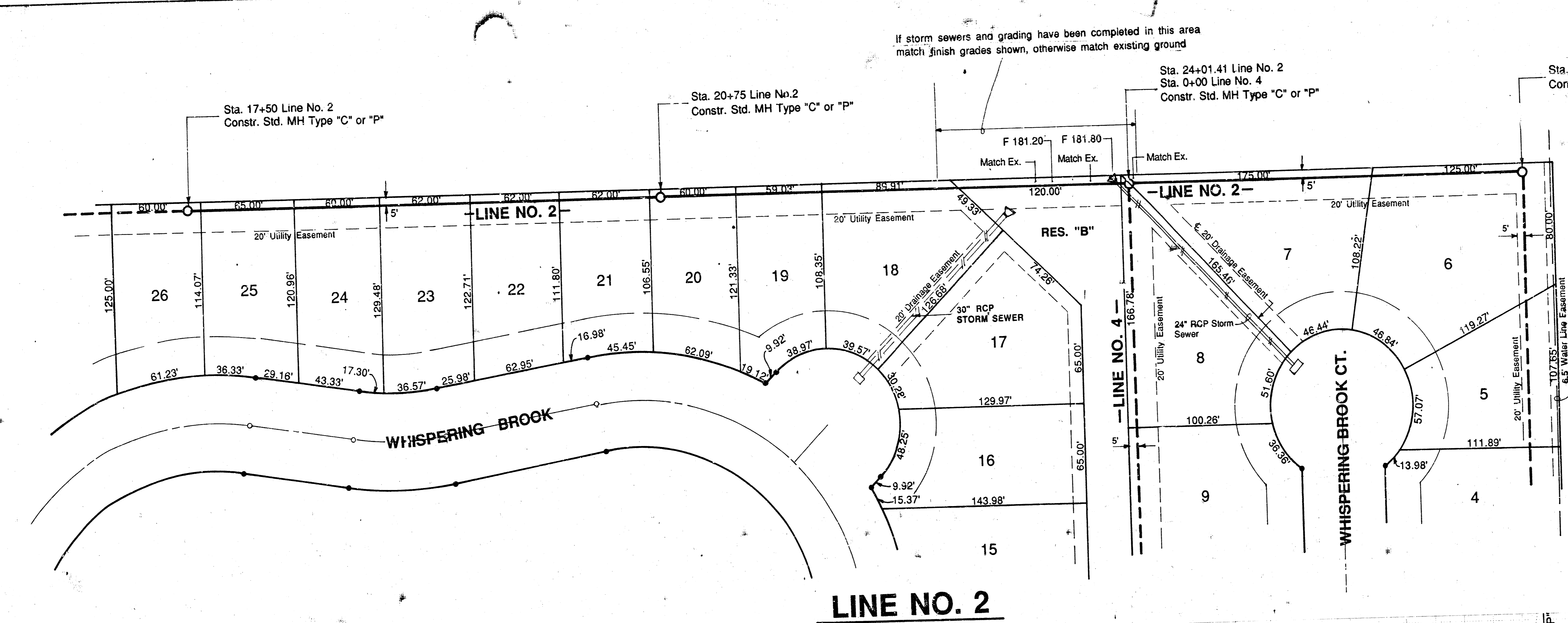
Whispering Brook Addition
Sanitary Sewer - Line No. 2
CITY OF WICHITA, KANSAS

Project No. 468-82163
Index Code 72

3 of 12

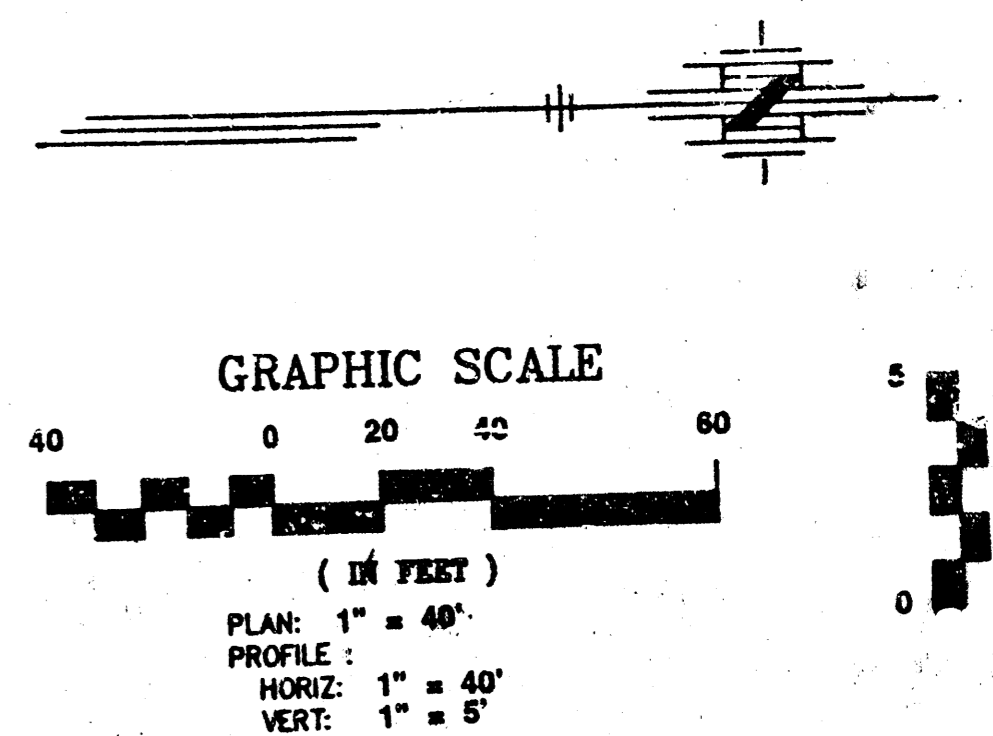
STATE	PROJECT NO.	FISCAL YEAR	SHEET NO.	TOTAL SHEETS
			5	12

DATE _____ BY _____
 PLAN SUBMITTED _____
 NOTE BOOK _____
 ALIGNMENT CHECKED _____
 RT OF WAY CHECKED _____
 NO. _____

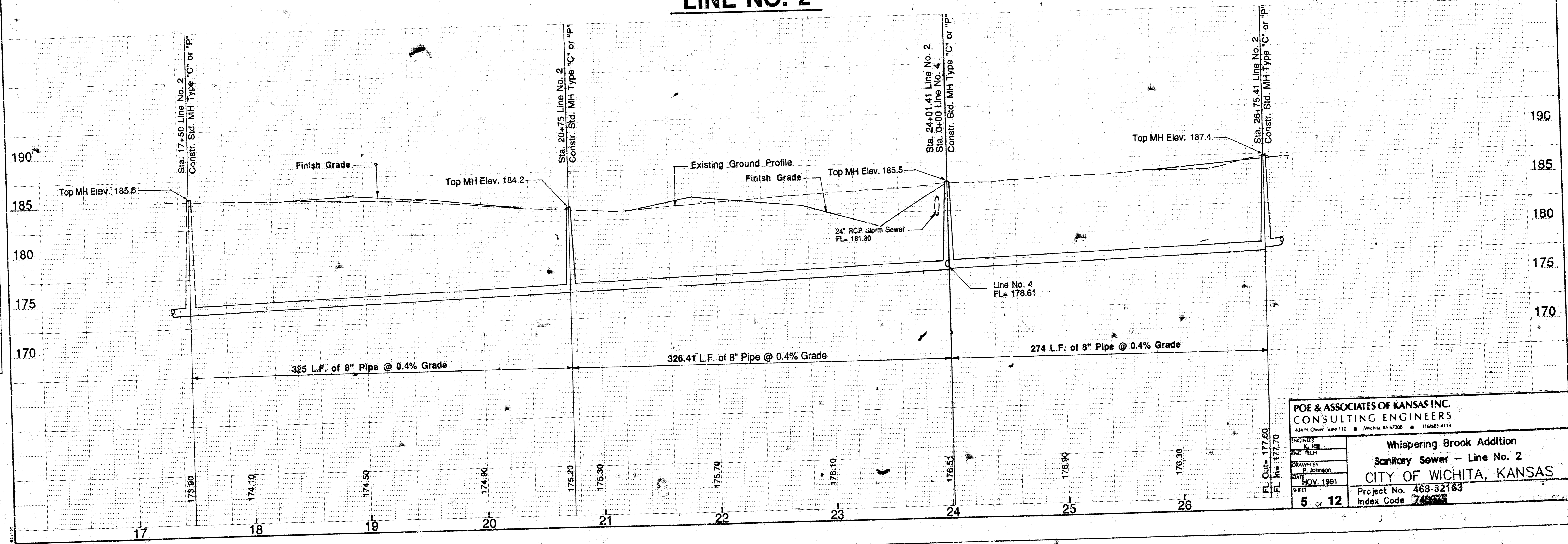


LISTING OF CURRENTLY SET COORDINATE POINTS

STATION LINE NO. 2	(N)	(E)
17 + 50	4303.3365	3685.1206
20 + 75	4331.3365	3684.9853
24 + 01.41	4657.7418	3684.8507
26 + 75.41	4931.7427	3684.7377



DATE _____ BY _____
 PROFILE SUBMITTED _____
 NOTE BOOK _____
 STRUCTURE NOTED _____
 NO. _____



POE & ASSOCIATES OF KANSAS INC.
 CONSULTING ENGINEERS
 434 N. Oliver, Suite 110 • Wichita, KS 67208 • 116685-4114

PROJECT: Whispering Brook Addition
 Sanitary Sewer - Line No. 2
 CITY OF WICHITA, KANSAS
 Project No. 468-82163
 Index Code 745000

NOV 1991
 SHEET 5 OF 12

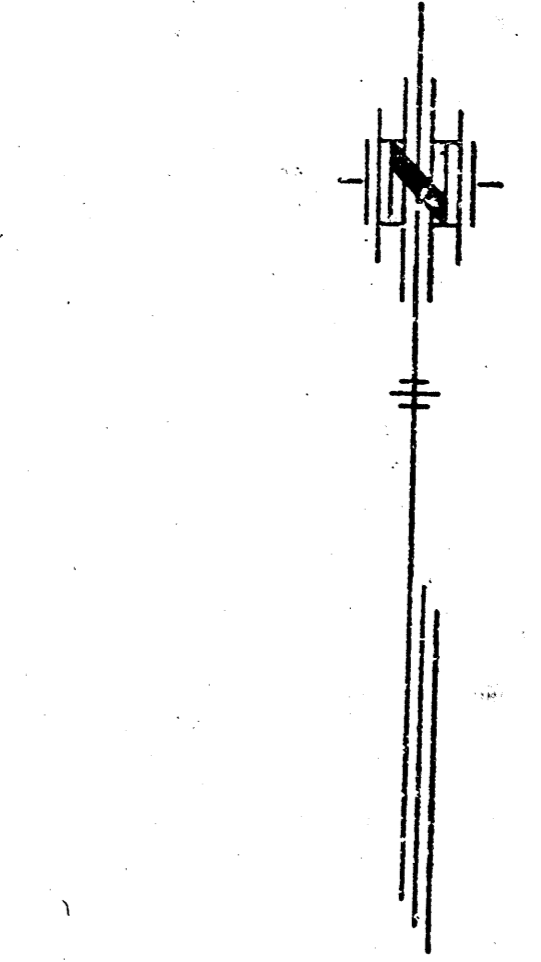
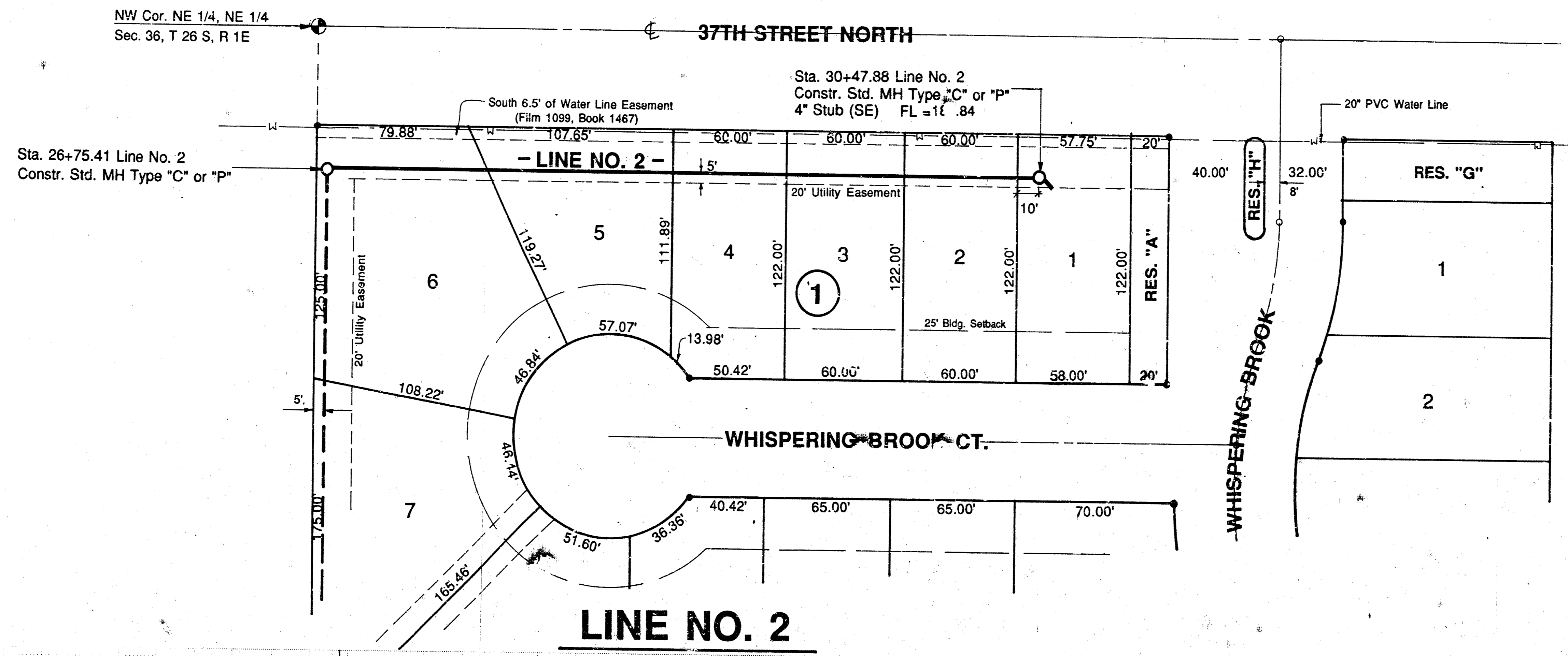
STATE	PROJECT NO.	FISCAL YEAR	SHEET NO.	TOTAL SHEETS

LISTING OF CURRENTLY SET COORDINATE POINTS

STATION	(H)	(E)
26 + 75.41	4931.7427	3684.7377
30 + 47.88	4930.6959	4057.2108

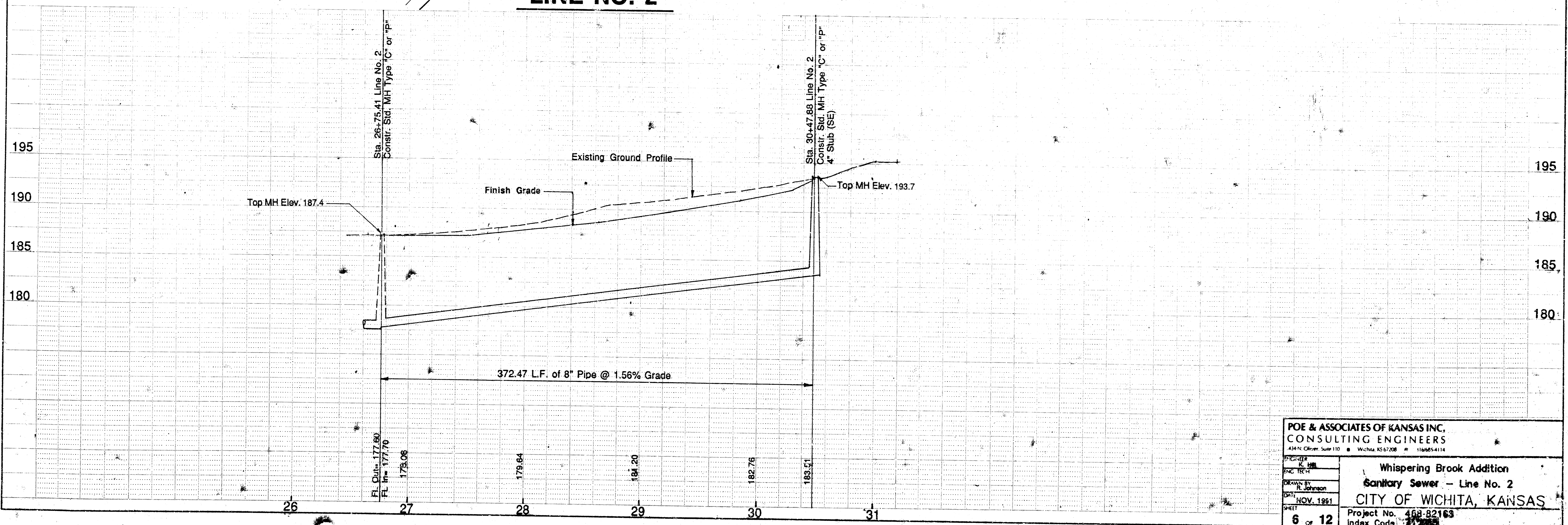
PLAN

DATE	BY
SUBMITTED TO	
NOTED BY	
DATE	
NO.	



PROFILE

DATE	BY
SUBMITTED TO	
NOTED BY	
DATE	
NO.	



POE & ASSOCIATES OF KANSAS INC.
CONSULTING ENGINEERS
4347 N. Oliver, Suite 110 • Wichita, KS 67208 • 1166654114

PROJECT: Sanitary Sewer
DRAWN BY: R. Johnson
DATE: NOV. 1991
SHEET: 6 of 12

Whispering Brook Addition
Sanitary Sewer - Line No. 2
CITY OF WICHITA, KANSAS
Project No. 488-82163
Index Code: 71-208

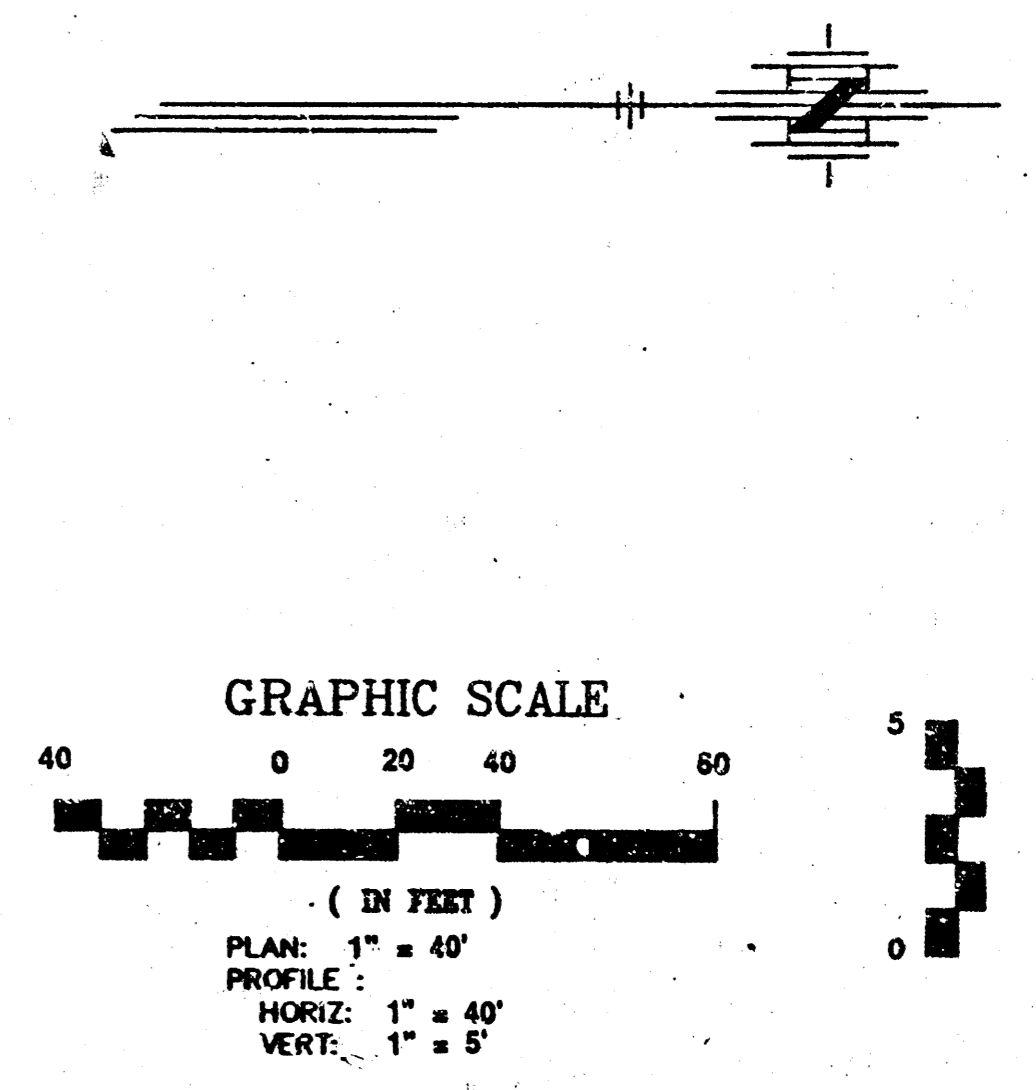
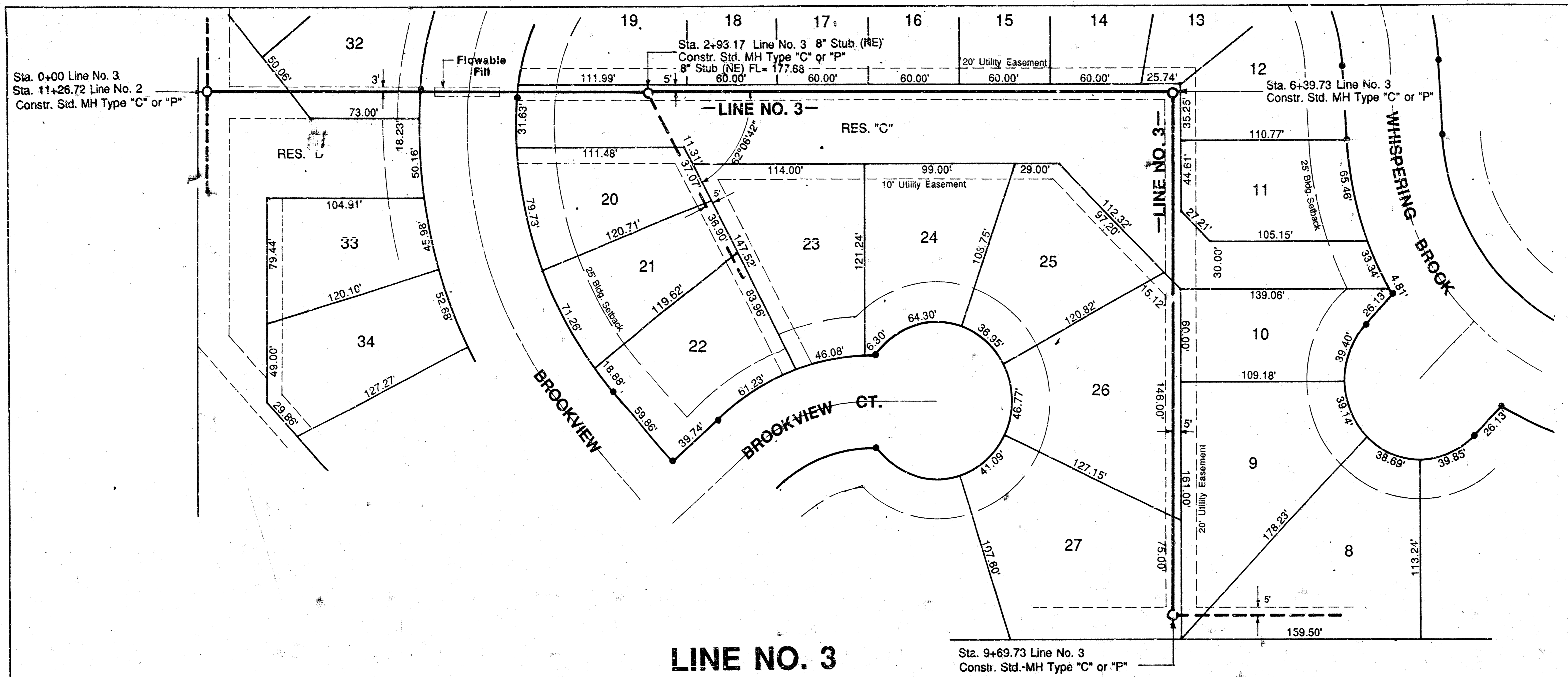
STATE	PROJECT NO.	FISCAL YEAR	SHEET NO.	TOTAL SHEETS
			7	12

LISTING OF CURRENTLY SET COORDINATE POINTS

STATION LINE NO. 3	(N)	(E)
2 + 93.17	3976.5693	3980.0000
6 + 39.73	4317.1256	3980.0000
9 + 69.73	4316.4379	4310.0000
12 + 50	4598.2093	4310.0000
15 + 18.20	4864.9093	4310.0000

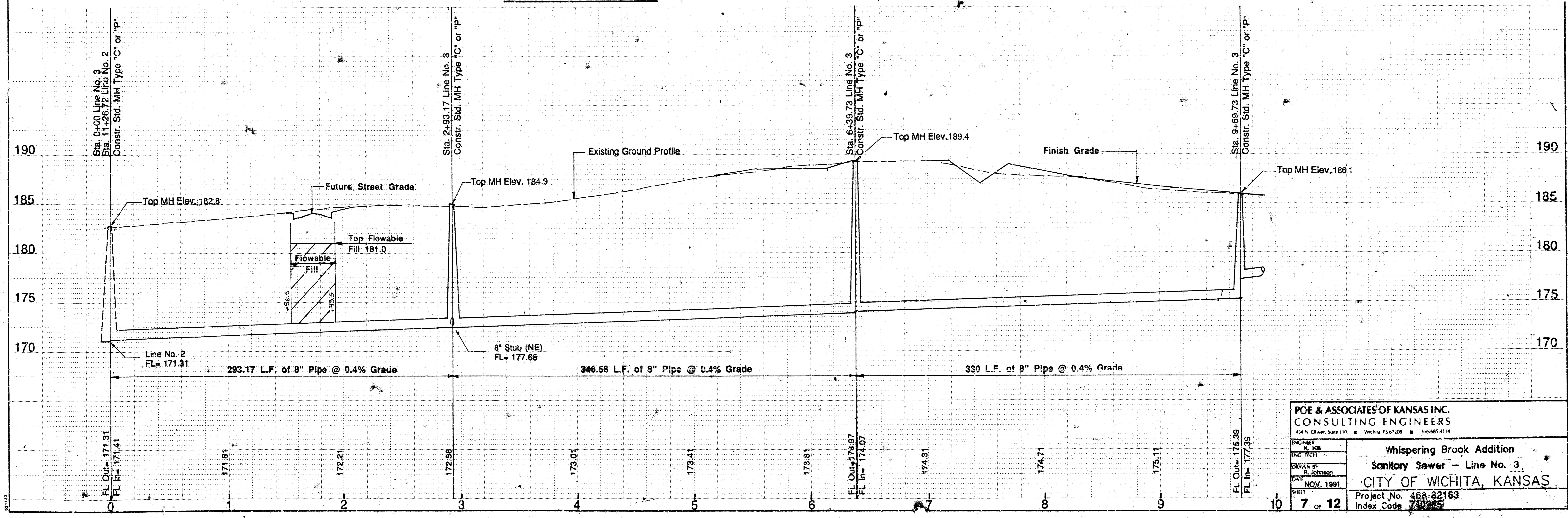
PLAN

DATE	BY	CHECKED
NO.	NO.	NO.



PROFILE

DATE	BY	CHECKED
NO.	NO.	NO.

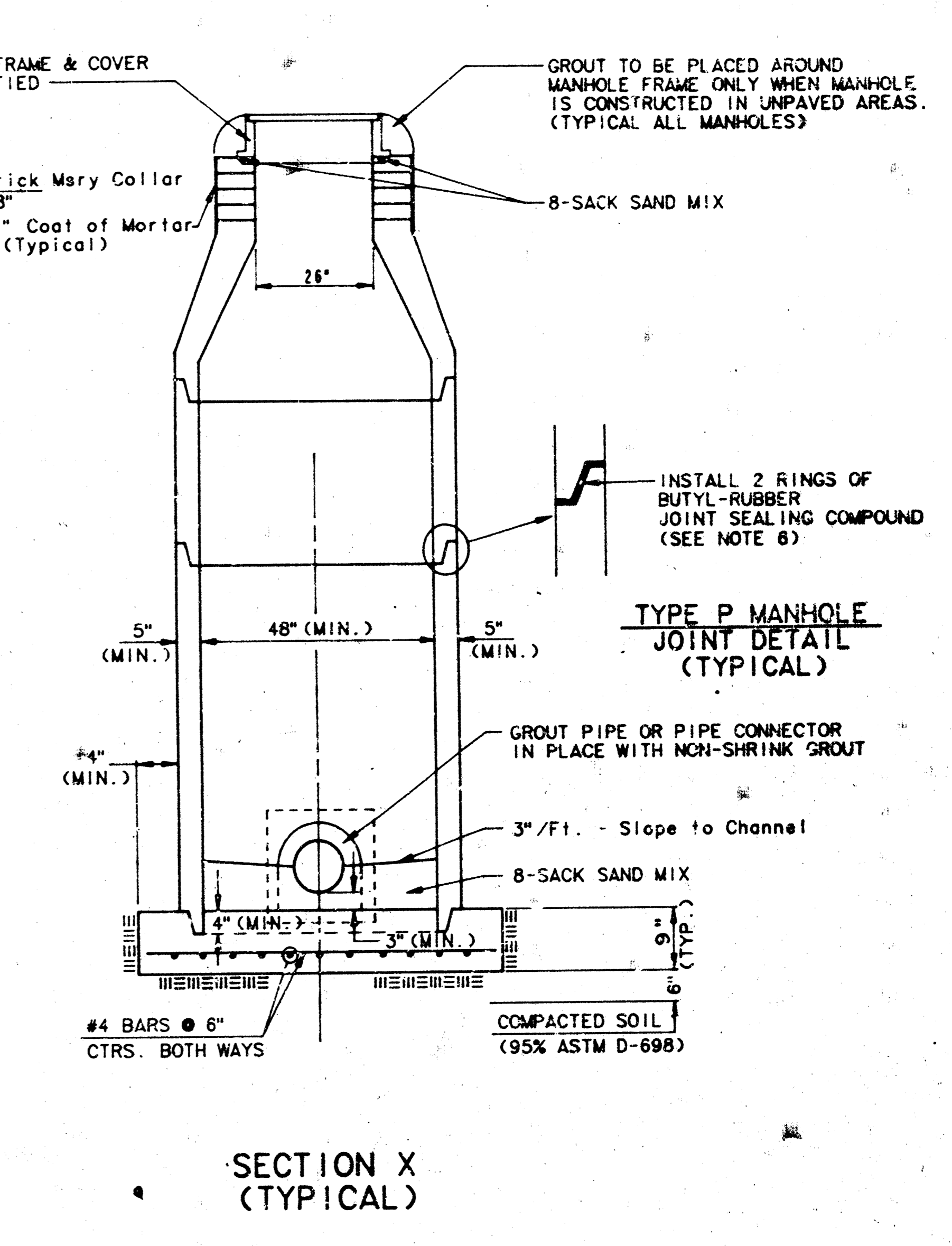
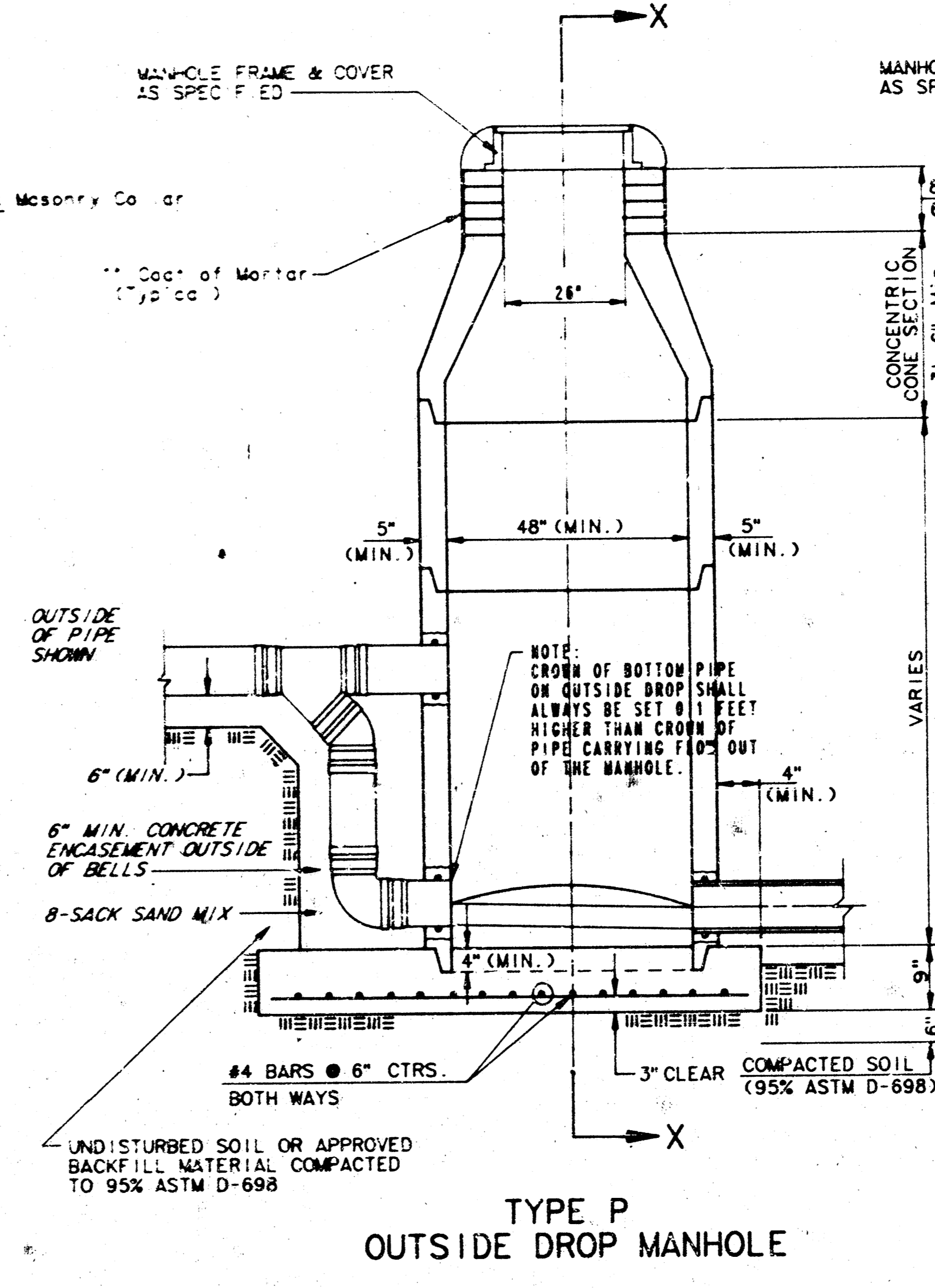
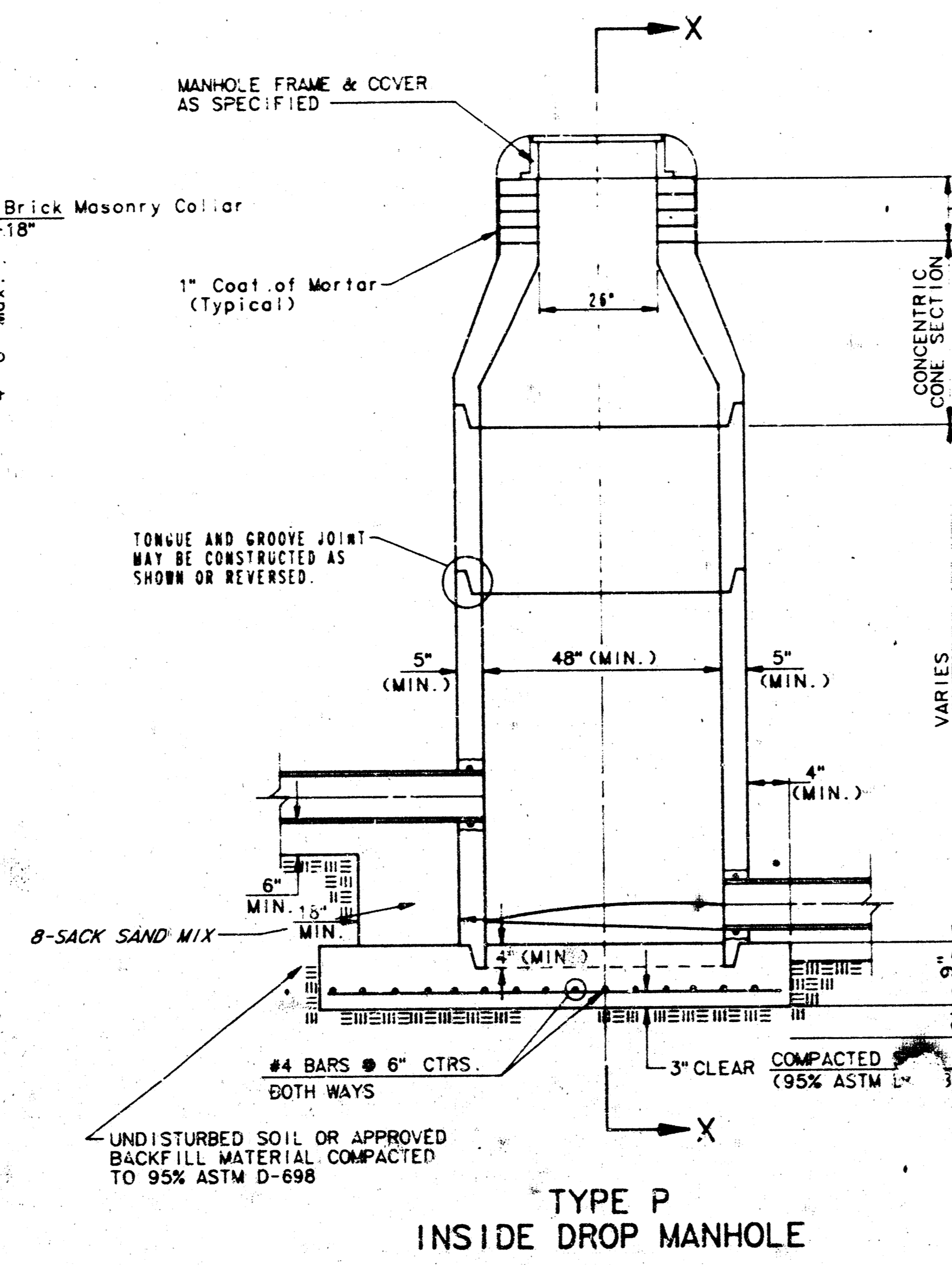
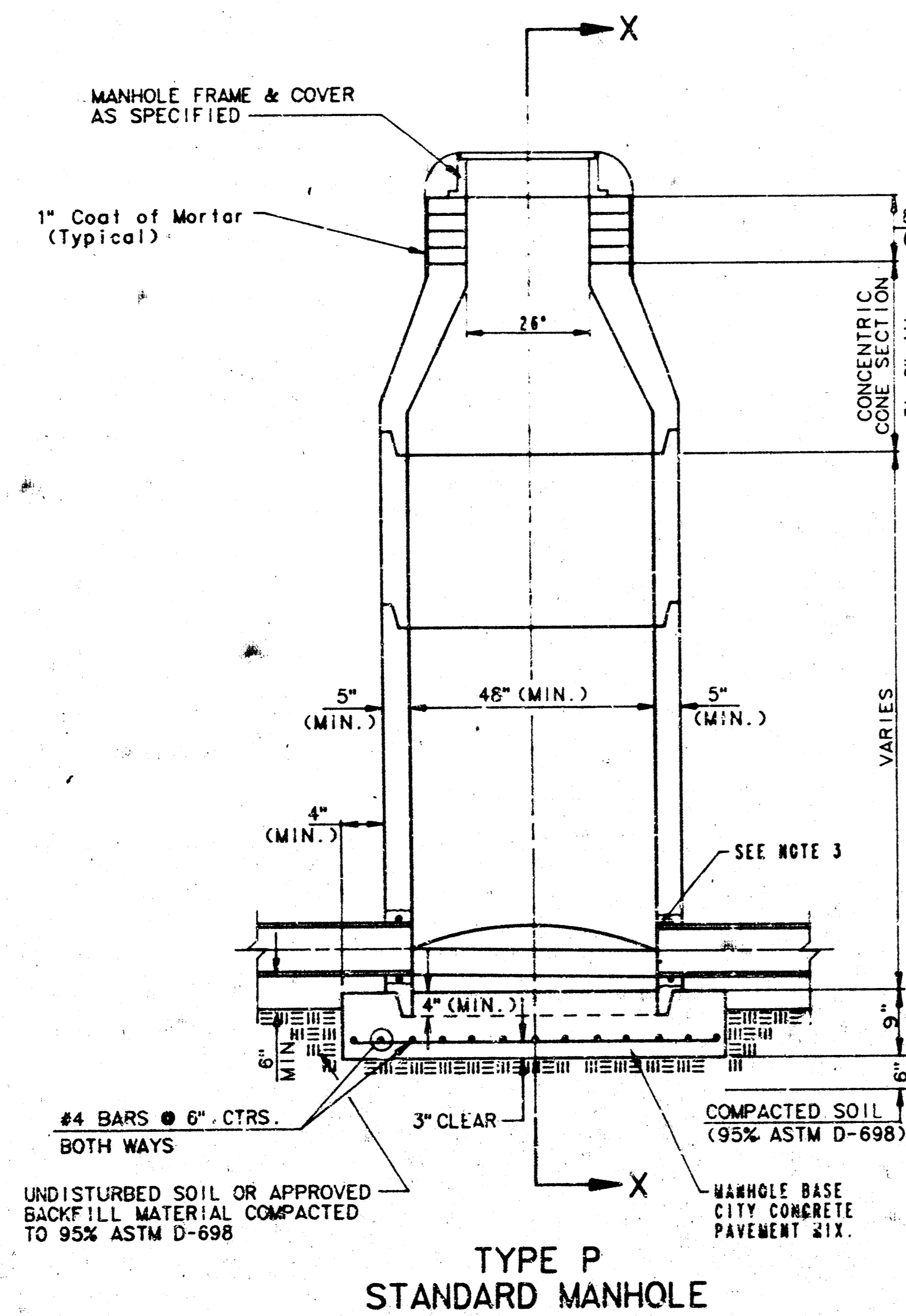


POE & ASSOCIATES OF KANSAS INC.
 CONSULTING ENGINEERS
 434 N. Oliver, Suite 110 • Wichita, KS 67208 • 316-851-4174

ENGINEER: K. H. POE
 ENC. TECH: R. JOHNSON
 DRAWN BY: R. JOHNSON
 DATE: NOV. 1991
 SHEET: 7 OF 12

Whispering Brook Addition
 Sanitary Sewer - Line No. 3
 CITY OF WICHITA, KANSAS
 Project No. 468-82163
 Index Code 740953

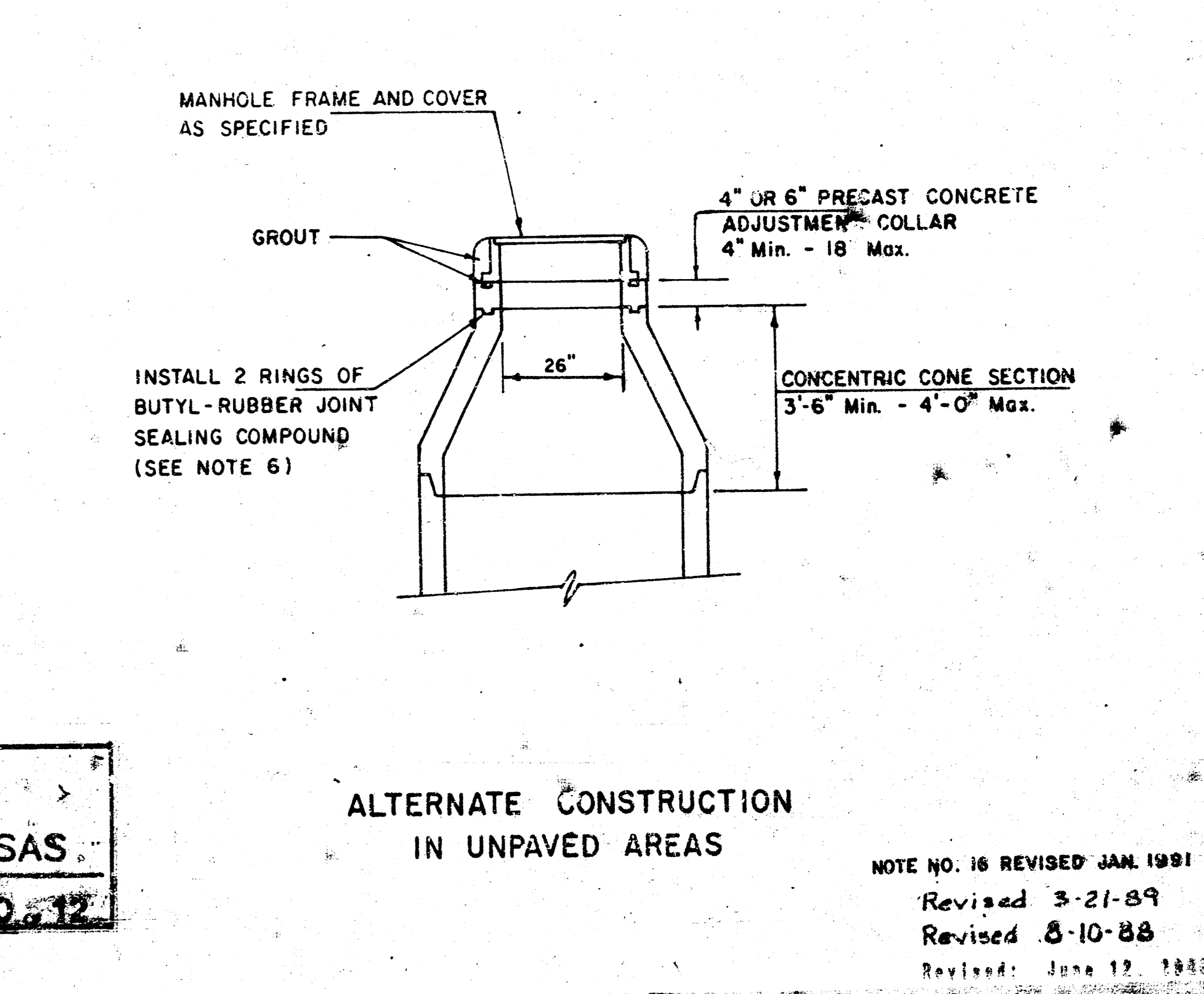
SEWER APPURTENANCES DETAILS ADOPTED AS STANDARD DESIGN BY CITY OF WICHITA



- GENERAL NOTES**
- PRECAST MANHOLE NOTES**
1. ALL PRECAST CONCRETE MANHOLE SECTIONS SHALL CONFORM TO THE LATEST REVISION OF A. S. T. M. C478 AS MODIFIED BY THE SPECIFICATIONS.
 2. NON-SHRINK GROUT SHALL BE NON-METALLIC TYPE.
 3. APPROVED FLEXIBLE WATERSTOP GASKETS SHALL BE INSTALLED TO JOIN THE SEWER TO THE MANHOLE WALL WHEN A. B. S. COMPOSITE PIPE OR P. V. C. PIPE IS USED. FOR OTHER TYPES OF PIPE THE SEWER SHALL BE GROUDED IN PLACE WITH NON-SHRINK GROUT. THE SEWER PIPE SHALL BE SUPPORTED WITH CONCRETE ENCASUREMENT A MINIMUM OF 3 FEET FROM THE MANHOLE WALL AND TO THE FIRST JOINT FOR P. V. C. P. SUCH THAT THE JOINT REMAINS FLEXIBLE.
 4. ALL INSIDE SURFACES OF THE CONCRETE MANHOLE WHICH WOULD BE EXPOSED TO SEWER GAS SHALL BE COATED WITH 2 COATS TRENEK SERIES 88 HI-BUILD EPOXYLINE, DRY THICKNESS OF 8 MILS (MIN.)
 5. EXTERIOR MANHOLE WALLS SHALL BE COATED WITH 1 COAT MOBILARMA 633 BITUMINOUS COATING.
 6. JOINT SEALING COMPOUND SHALL BE KENT SEAL NO. 2 OR APPROVED EQUAL.
 7. PRECAST MANHOLES SHALL BE SET AT LEAST 4 INCHES INTO THE MANHOLE BASE.
 8. TOP OF MANHOLE FLOOR SLAB SHALL BE AT LEAST 3 INCHES BELOW THE FLOW LINE OF THE OUTLET PIPE TO INSURE SUFFICIENT MINIMUM THICKNESS OF SHAPED INVERT.
 9. LIFTING HOLES SHALL BE FILLED WITH NON-SHRINK GROUT AND THE INTERIOR SURFACE COATED AS SPECIFIED.
 10. MORTAR USED IN MASONRY CONSTRUCTION SHALL CONTAIN 8 SACKS OF CEMENT PER CUBIC YARD. CONCRETE USED IN MANHOLE BASES SHALL CONFORM TO THE REQUIREMENTS OF CONCRETE FOR CONCRETE PAVEMENT CONSTRUCTION AS SPECIFIED IN THE CITY STANDARD PAVING SPECIFICATIONS USING CITY CONCRETE PAVEMENT MIX WITHOUT AIR ENTRAINING ADMIXTURE. MORTAR SHALL BE PLACED AROUND THE MANHOLE BARS AS SHOWN ON THE DRAWINGS WHEN MANHOLES ARE CONSTRUCTED IN UNPAVED AREAS. MANHOLES CONSTRUCTED WHERE PIPE SIZES ARE SMALLER THAN 24" SHALL HAVE AN INSIDE DIAMETER OF 4". MANHOLES CONSTRUCTED WHERE PIPE SIZES ARE 24" OR LARGER SHALL HAVE AN INSIDE DIAMETER OF 5". COMPLETED MANHOLE SHALL BE WITHOUT LEAKS AND WATER TIGHT.

11. REINFORCING STEEL SHALL BE INSTALLED IN THE MANHOLE BASES AND SHALL CONSIST OF NO. 4 BARS PLACED ON 6" CENTERS IN BOTH DIRECTIONS. THE MANHOLE BASE REINFORCEMENT SHALL BE PLACED AT LEAST 3" ABOVE THE BOTTOM OF THE MANHOLE BASE. ALL COSTS FOR FURNISHING AND INSTALLING REINFORCING STEEL SHALL BE INCLUDED IN THE UNIT PRICE BID FOR THE MANHOLE.
12. OPENINGS SHALL BE CUT INTO THE MANHOLE WALL WHEN OUTSIDE DROPS ARE CONSTRUCTED ON EXISTING MANHOLES. SUCH OPENINGS CUT INTO EXISTING MANHOLES SHALL BE AS SMALL AS PRACTICAL TO FACILITATE INSTALLING AND GROUDED THE NEW PIPE IN PLACE. WATERSTOP GASKETS SHALL BE USED WITH P. V. C. AND A. B. S. COMPOSITE PIPE. THE NEW PIPE SHALL BE GROUDED INTO THE OPENING USING AN APPROVED NON-SHRINK GROUT FOR THE FULL MANHOLE WALL THICKNESS. THE EXTERIOR OF THE COMPLETED CONNECTION SHALL BE SEALED WITH AN APPROVED BITUMINOUS COATING SUCH THAT THE CONNECTION WILL BE WATER TIGHT. FLOOR OF MANHOLE SHALL BE MODIFIED TO FORM NEW FLOW CHANNEL FOR THE NEW CONNECTION AS INDICATED BY THE DRAWING. THIS WORK, INCLUDING MODIFICATION OF MANHOLE FLOOR, SHALL BE PAID FOR AT THE UNIT PRICE BID FOR OUTSIDE DROP STACK CONSTRUCTION ON EXISTING MANHOLE.
13. THE FLOORS OF ALL MANHOLES SHALL BE SHAPED WITH FLOW CHANNELS SUCH THAT THE MANHOLES WILL BE SELF-CLEANING AND FREE OF AREAS WHERE SOLIDS COULD BE DEPOSITED AS SEWAGE FLOWS THROUGH THE MANHOLE FROM ALL INLET PIPES TO THE OUTLET PIPE. FLOW CHANNELS SHALL BE FORMED TO MATCH THE BOTTOM VALVES OF THE INFLOWING PIPES AND THE OUTFLOWING PIPE AS SHOWN BY THE DRAWINGS EXCEPT FOR INSIDE DROP MANHOLES. FLOW CHANNELS FOR INSIDE DROP MANHOLES SHALL BE CONSTRUCTED AS INDICATED BY THE DRAWING. MANHOLE FLOORS SHALL HAVE SLOPES OF 3 INCHES PER FOOT IN THE AREAS OUTSIDE OF THE FLOW CHANNELS SLOPED TOWARD THE FLOW CHANNELS. PIPES LAID THROUGH MANHOLES SHALL HAVE THE TOP HALF REMOVED TO REAT LINES FOR THE FULL INSIDE DIAMETER OF THE MANHOLE. MANHOLE FLOORS SHALL THEN BE SHAPED AROUND THE BOTTOM HALF OF THE PIPE WHICH FORMS THE FLOW CHANNEL.
14. PIPES INSTALLED WITHIN THE EXCAVATION MADE FOR THE MANHOLE SHALL BE CRADLED WITH CONCRETE TO THE LIMITS OF THE MANHOLE EXCAVATION. WHEN CLAY PIPE IS USED, THE CRADLE SHALL EXTEND TO THE FIRST JOINT OUTSIDE THE MANHOLE. THE CRADLE SHALL BE TERMINATED AT THE CLAY PIPE JOINT IN A MANNER WHICH WILL MAINTAIN THE FLEXIBILITY OF THE JOINT. COST OF CRADLE WITHIN MANHOLE EXCAVATION OR TO CLAY PIPE JOINTS ADJACENT TO MANHOLE SHALL BE INCLUDED IN THE UNIT PRICE BID FOR THE MANHOLE.

15. MANHOLE COVER CASTINGS AND MANHOLE FRAME CASTINGS SHALL CONFORM TO THE REQUIREMENTS AS INDICATED IN THE STANDARD SPECIFICATIONS AND AS SHOWN IN THE STANDARD DETAIL DRAWING.
16. THE VERTICAL FREE FALL DROP INSIDE MANHOLES SHALL NOT EXCEED 2'. THE CROOKS OF INFLOWING PIPES SHALL NEVER BE SET LOWER THAN THE CROWN OF THE OUTFLOWING PIPE.
17. STANDARD MANHOLES AND STANDARD INSIDE DROP MANHOLES SHALL BE BID AS STANDARD MANHOLES FOR THE TYPE AND DIAMETER INDICATED. OUTSIDE DROP MANHOLES SHALL BE BID AS STANDARD OUTSIDE DROP MANHOLES FOR THE TYPE AND DIAMETER INDICATED. ALL MANHOLE DIAMETERS WILL BE 4" UNLESS INDICATED OTHERWISE.
18. A BRICK MASONRY COLLAR SHALL BE INSTALLED BETWEEN THE CAST IRON FRAME AND THE CONCENTRIC CONE SECTION. THE COLLAR WILL HAVE 8" WALLS AND A VERTICAL HEIGHT OF 6" MINIMUM AND 18" MAXIMUM. A COAT OF MORTAR WILL BE PLASTERED ON THE OUTSIDE OF THE COLLAR.



**Whispering Brook Addition
Standard Manhole Type "P"
CITY OF WICHITA, KANSAS**

Project No. 465-2183
Index Code 740000

NOTE NO. 16 REVISED JAN. 1991
Revised 3-21-89
Revised 8-10-88
Revised June 12, 1983

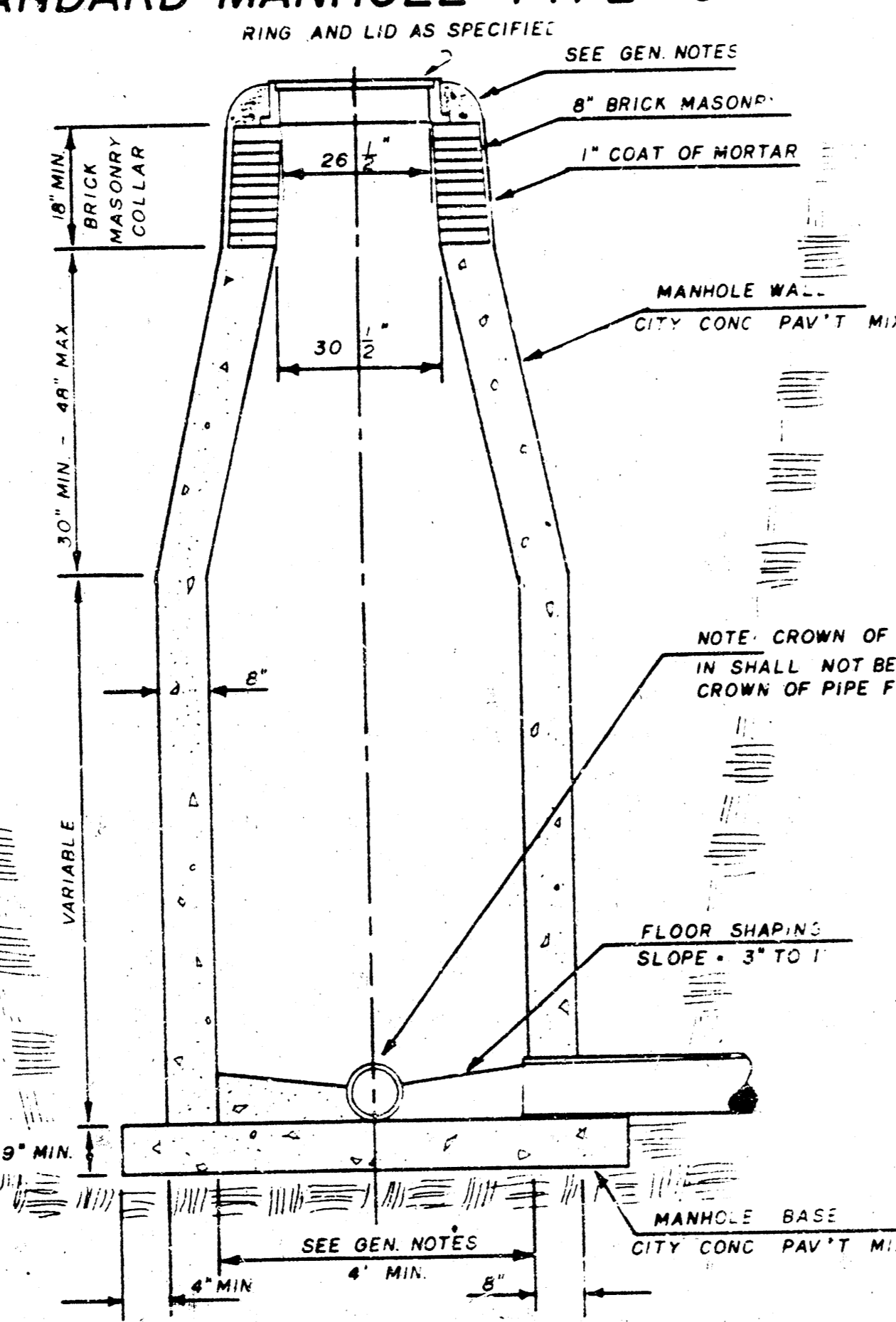
SEWER APPURTENANCES DETAILS

ADOPTED AS STANDARD DESIGN

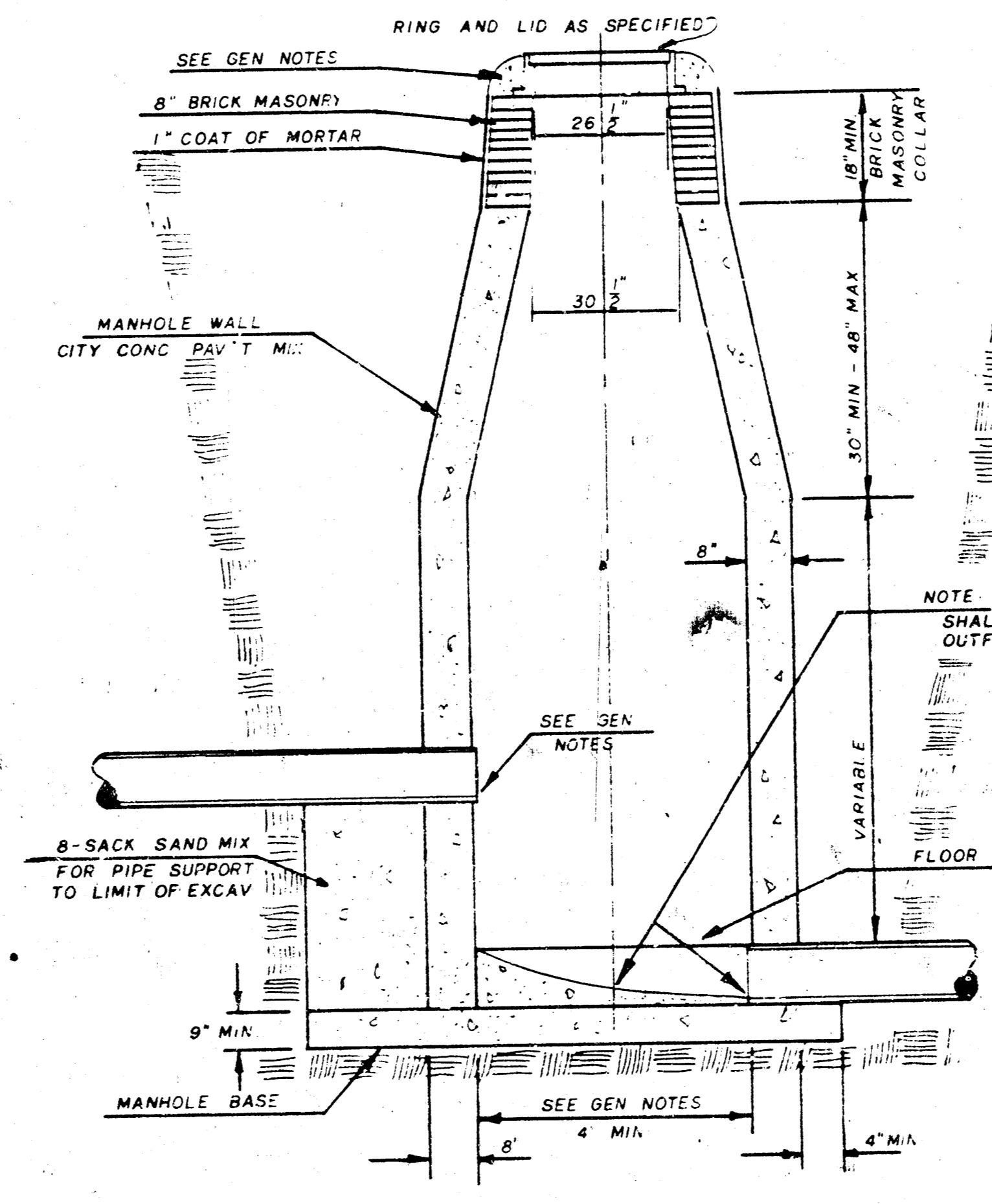
BY

City of Wichita, Kansas

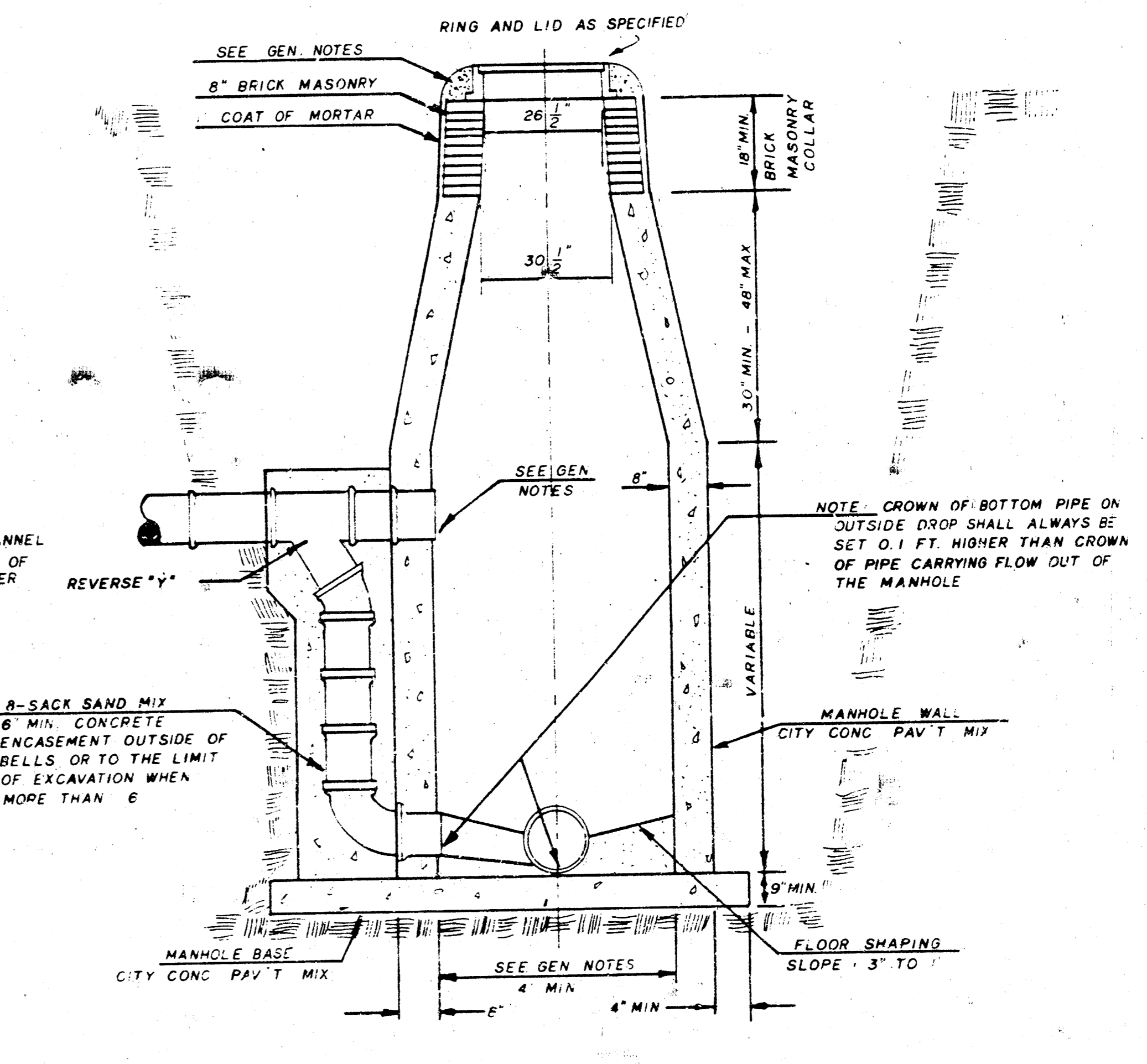
STANDARD MANHOLE TYPE "C"



INSIDE DROP MANHOLE TYPE "C"



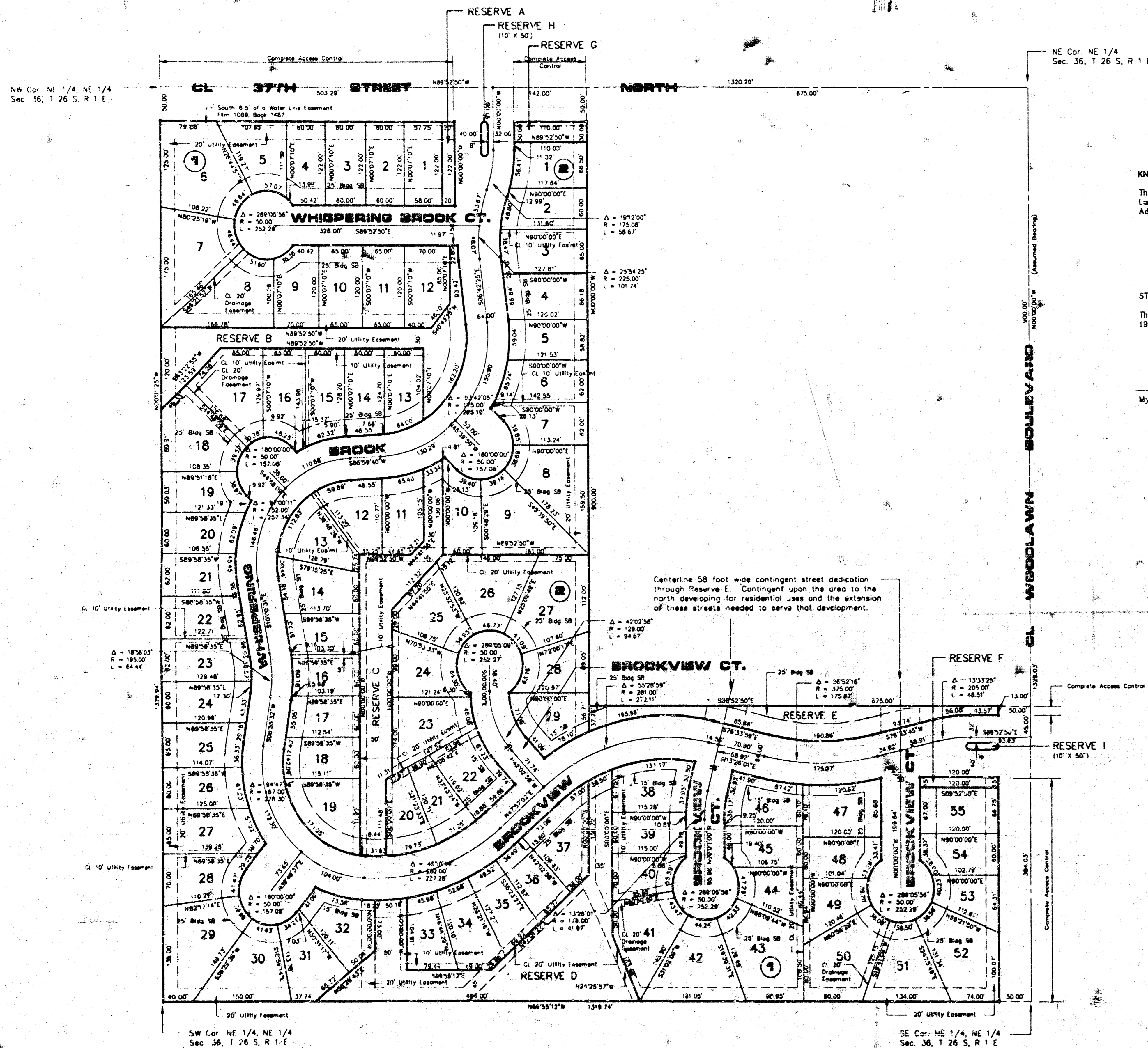
OUTSIDE DROP MANHOLE TYPE "C"



GENERAL NOTES

- MORTAR USED IN MASONRY CONSTRUCTION SHALL CONTAIN 6 SACKS OF CEMENT PER CUBIC YARD. CONCRETE USED IN MANHOLE WALLS AND BASES SHALL CONFORM TO THE REQUIREMENTS OF CONCRETE FOR CONCRETE PAVEMENT CONSTRUCTION AS SPECIFIED IN THE CITY STANDARD PAVING SPECIFICATIONS USING CITY CONCRETE PAVEMENT MIX WITHOUT AIR ENTRAINING ADJUSTMENT. MORTAR SHALL BE PLACED AROUND THE MANHOLE RING AS SHOWN ON THE DRAWINGS WHEN MANHOLES ARE CONSTRUCTED IN UNPAVED AREAS. TYPE "C" MANHOLES MAY BE CONSTRUCTED ONLY WHERE PIPE SIZES ARE 8" OR SMALLER. THE INSIDE DIAMETER OF TYPE "C" MANHOLES SHALL BE 4' COMPLETED MANHOLE SHALL BE WITHOUT LEAKS AND WATER TIGHT.
- REINFORCING STEEL SHALL BE INSTALLED IN THE MANHOLE BASE. REINFORCING STEEL SHALL CONSIST OF #4 @ 12" ON 12" PLACED 4" ABOVE THE BOTTOM OF THE MANHOLE BASE. REINFORCING STEEL SHALL BE PLACED 6" ABOVE THE BOTTOM OF THE MANHOLE BASE. COST OF FURNISHING AND INSTALLING REINFORCING STEEL SHALL BE INCLUDED IN THE UNIT PRICE BID FOR THE MANHOLE.
- AN OPENING SHALL BE CUT IN THE MANHOLE WALL FOR THE UPPER INLET PIPE FOR INSIDE AND OUTSIDE DROP MANHOLES. THE UPPER INLET PIPE SHALL BE GROUTED INTO THIS OPENING WITH AN APPROVED GROUT. THE EXTERIOR OF THIS COMPLETE CONNECTION SHALL BE SEALED WITH AN APPROVED BITUMINOUS COATING SUCH THAT THE CONNECTION WILL BE WATER TIGHT.
- THE FLOORS OF ALL MANHOLES SHALL BE SHAPED WITH FLOW CHANNELS SUCH THAT THE MANHOLES WILL BE DEEP CLEANING AND FREE OF WHEN DEPOSITS ACCUMULATE. DEPOSITS AS SEWER FLOW THROUGH THE MANHOLE FROM ALL INLET PIPES TO THE OUTLET PIPES. FLOW CHANNELS SHALL BE FORMED TO MATCH THE BOTTOM HALVES OF THE INFLOWING PIPES AND THE OUTFLOWING PIPE AS SHOWN BY THE DRAWINGS EXCEPT FOR INSIDE DROP MANHOLES. FLOW CHANNELS FOR INSIDE DROP MANHOLES SHALL BE CONSTRUCTED AS INDICATED BY THE DRAWINGS. MANHOLE FLOORS SHALL HAVE SLOPES OF 3 INCHES PER FOOT IN THE AREAS OUTSIDE OF THE FLOW CHANNELS SLOPED TOWARD THE FLOW CHANNELS. PIPES LAID THROUGH MANHOLES SHALL HAVE THE TOP HALF REMOVED TO NEAT LINES FOR THE FULL INSIDE DIAMETER OF THE MANHOLE. MANHOLE FLOORS SHALL THEN BE SHAPED AROUND THE BOTTOM HALF OF THE PIPE WHICH FORMS THE FLOW CHANNELS.
- PIPES INSTALLED WITHIN THE EXCAVATION MADE FOR THE MANHOLE SHALL BE GRADED WITH CONCRETE TO THE LIMITS OF THE MANHOLE EXCAVATION. WHEN CLAY PIPE IS USED, THE GRADE SHALL EXTEND TO THE FIRST JOINT OUTSIDE THE MANHOLE. THE GRADE SHALL BE TERMINATED AT THE CLAY PIPE JOINT IN A MANNER WHICH WILL MAINTAIN THE FLEXIBILITY OF THE JOINT. COST OF GRADE WITHIN MANHOLE EXCAVATION OR TO CLAY PIPE JOINTS ADJACENT TO MANHOLE SHALL BE INCLUDED IN THE UNIT PRICE BID FOR THE MANHOLE.
- MANHOLE COVER CASTINGS AND MANHOLE FRAME CASTINGS SHALL CONFORM TO THE REQUIREMENTS AS INDICATED IN THE STANDARD SPECIFICATIONS AND AS SHOWN IN THE STANDARD DETAIL DRAWINGS.
- THE VERTICAL FREE FALL DROP INSIDE MANHOLES SHALL NOT EXCEED 2'. THE CROWN OF INFLOWING PIPES SHALL NEVER BE SET LOWER THAN THE CROWN OF THE OUTFLOWING PIPE.
- STANDARD MANHOLES TYPE "C" AND STANDARD INSIDE DROP MANHOLES TYPE "C" SHALL BE BID AS STANDARD MANHOLES FOR THE TYPE AND DIAMETER INDICATED. OUTSIDE DROP MANHOLES TYPE "C" SHALL BE BID AS STANDARD OUTSIDE DROP MANHOLES FOR THE TYPE AND DIAMETER INDICATED. ALL MANHOLE DIAMETERS WILL BE 4' UNLESS INDICATED OTHERWISE.

Whispering Brook Addition
Standard Manhole Type "C"
CITY OF WICHITA, KANSAS
Project No. 468-82163
Index Code: 740985
11 of 12



KNOW ALL MEN BY THESE PRESENTS:

That the State Bank of Colwich holder of a mortgage on the property described in the Land Surveyor's certificate does hereby consent to the plat of Whispering Brook Addition.

STATE BANK OF COLWICH
Mrs. P. Anderson
 Chris Anderson, Vice President

STATE OF KANSAS, COUNTY OF SEDGWICK: ss.

This instrument was acknowledged before me on this 2nd day of Jan, 1992, by Chris Anderson, Vice President of the State Bank of Colwich.

7-21-92
 My appointment expires:



Patricia M. Kretz
 Notary Public

STATE OF KANSAS, COUNTY OF SEDGWICK: ss.

I, Kenny E. Hill, being a duly licensed Land Surveyor in said County and State, do hereby certify that I have been in responsible charge of surveying and plotting "WHISPERING BROOK ADDITION" to Wichita, Kansas, being described as follows:

The North half of the East Half of the Northeast Quarter of Section 36, Township 26 South, Range 1 East of the 6th P.M. Sedgwick County, Kansas, except for the North 900.00 feet of the East 675.00 feet thereof, subject to street right-of-way.

The accompanying plat is a true and correct exhibit of property surveyed.

Dated this 28th day of October, 1991.

Kenny E. Hill
 Kenny E. Hill, L.S.

KNOW ALL MEN BY THESE PRESENTS:

That we, the undersigned, have caused the land described in the Surveyor's Certificate to be plotted into lots, blocks, streets and reserves. The streets are hereby dedicated to and for the use of the public. A contingent street dedication is hereby granted as indicated. The street dedication is contingent upon the area north of Reserve E developing for residential uses and the extension of these streets across Reserve E being needed to serve that development. Easements are hereby granted as indicated for the construction and maintenance of drainage and utilities. Reserves B, C, D, and E are reserved to permit drainage, drainage structures, ponds, landscaping, sidewalks, gazebos, recreation facilities, utilities confined to easements and utility service connections. Reserves A, F, G, H, and I are reserved to permit landscaping, entry monuments, irrigation, sidewalk and utilities confined to easements. The Reserves are to be owned and maintained by a property owners association consisting of all of the owners of property in this addition. All abutters' rights of access to or from 37th Street North or to or from Woodlawn Boulevard over and across the North line of Block 1, the North line of Reserve A and the North line of Reserve G or the East line of Block 1 and the East line of Reserve E are hereby granted to the appropriate governing body.

Greystone Construction, Inc.

Randy Dean Poes
 Randy Dean Poes, President

STATE OF KANSAS, COUNTY OF SEDGWICK: ss.

This instrument was acknowledged before me on this 4th day of November, 1991, by Randy Dean, President of Greystone Construction, Inc.

My Appointment Expires: May 25, 1994

Joni S. Legge
 Joni S. Legge, Notary Public

This plat of WHISPERING BROOK ADDITION to Wichita, Sedgwick County, Kansas has been submitted to and approved by the WICHITA-SEDGWICK COUNTY METROPOLITAN AREA PLANNING COMMISSION, Wichita, Kansas.

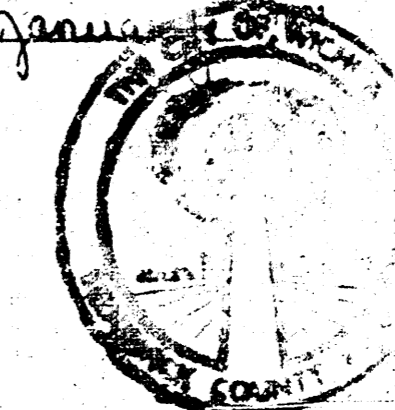
Dated this 24th day of October, 1991.



George Sherman
 George Sherman, Chairman

Marvin S. Krout
 Marvin S. Krout, Secretary

This plat approved and all dedications shown hereon accepted by the City Council of the City of Wichita, Kansas, this 28 day of October, 1991.



Bob Knight
 Bob Knight, Mayor

Pat Burnett
 Pat Burnett, Deputy City Clerk

Entered on transfer record this _____ day of _____, 1991.

Don Wright, County Clerk

This is to certify that this instrument was filed for record in the Register of Deeds Office at _____ A.M. on the _____ day of _____, 1991.

Pat Ketter, Register of Deeds.

Ed Reso, Chief Deputy

WHISPERING BROOK ADDITION

TO WICHITA, SEDGWICK COUNTY, KANSAS

Project No. 482-82188
 Index Code 740865

Sheet 12 of 12