

Time Is: 10:52:32
 Date Is: 1-6-1993
 Drawing File: C:\DCA\PA\520\AS-COVER
 RTT.CZ

CONSTRUCTION PLANS

SANITARY SEWER EXTENSIONS WHISPERING BROOK

TO

THE CITY OF WICHITA, KANSAS

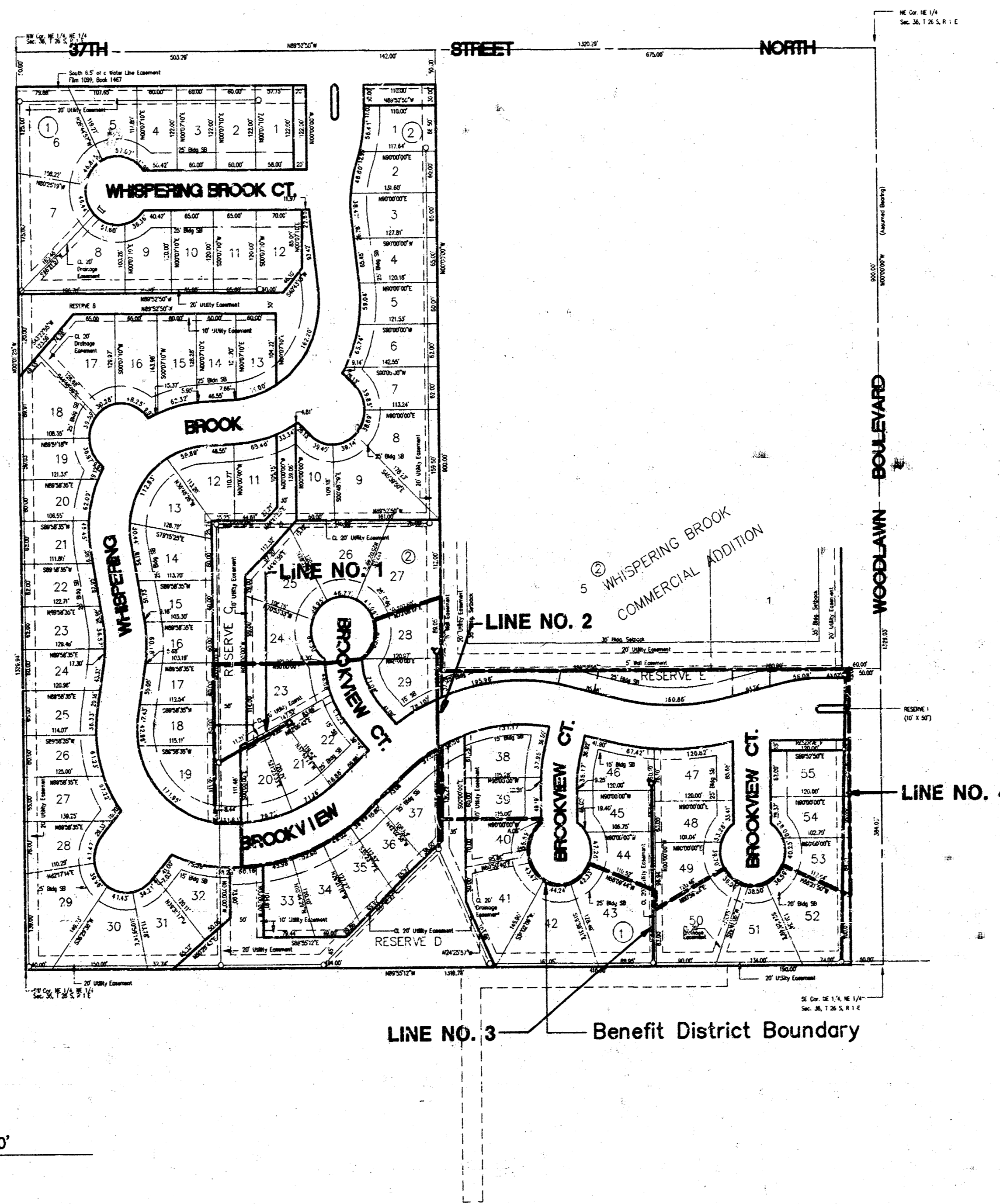
MICHAEL E. LINDEBAK, P.E. - CITY ENGINEER
 LATERAL 44, MAIN 9, SANITARY SEWER #23
 PROJECT NO. 468-82166
 INDEX CODE 741330

GENERAL NOTES:

1. Existing utility lines and their location, as shown on the plans, represent the best information obtainable for design. The contractor will be required to work around existing utilities within the right-of-way which do not conflict with proposed construction.
2. Rubble from the removal of miscellaneous structures and excess excavation which is to be wasted shall be disposed of on sites to be provided by the Contractor. These sites shall be approved by the Engineer as to suitability, appearance and site location. Locations that, in the opinion of the Engineer, will leave an unsightly appearance will not be approved.

All disposal sites must be approved by the Kansas Department of Health and Environment. Material either stockpiled or disposed of in a flood plain would require a Kansas State Board of Agriculture permit. Any material dumped in waters of the United States or wetlands is subject to U.S. Corps. of Engineers permitting regulations. Any material buried or stockpiled beyond approved construction limits would require additional archaeological investigations unless buried in a previously approved borrow location.

3. The Contractor shall be responsible for maintaining continuous flow of sewage through construction. Contractor's proposed method for maintaining sewage flow shall be approved by the Engineer. Cost of maintaining flow of sewage through construction will not be paid for directly and this cost shall be considered as subsidiary to the other pay items of the work.
4. The Contractor shall be responsible for preserving property irons. The Contractor will be required to re-establish any property irons which are damaged or destroyed by his construction operations. Such irons shall be re-established by a licensed land surveyor or a licensed professional engineer in accordance with state laws.
5. Trees and shrubs in public right-of-way which are in direct conflict with proposed new construction, shall be removed by the Contractor with the Engineer's approval. Trees and shrubs which are not in direct conflict with the proposed new construction shall be saved and protected from damage.
6. Contractor shall vacuum test all manholes according to the City of Wichita standard specifications.
7. The tops of manholes to be set 0.3 feet above finished grade.
8. Contractor to make any adjustment necessary where connecting to 8" stub lines from existing manholes. Cost to be subsidiary to price bid for 8" pipe.
9. Grading along sewer lines shall be to the finish grades shown on the profiles for the complete width of the easements.



INDEX

| | |
|--------------------------------|---------|
| TITLE SHEET | SHEET 1 |
| LINE NO. 1 and 2 | SHEET 2 |
| LINE NO. 3 | SHEET 3 |
| LINE NO. 4 | SHEET 4 |
| TYPE "P" MANHOLE | SHEET 5 |
| TYPE "C" MANHOLE | SHEET 6 |
| VERTICAL RISER DETAILS | SHEET 7 |
| WHISPERING BROOK ADDITION PLAT | SHEET 8 |

BENCH MARKS

(City of Wichita Datum)

1. City of Wichita std. BM disc at 37th & Edgemoor. 39' N. & 44' E. of 1/4 Section Corner. Elev. 193.66
2. Railroad spike in N. face power pole. 110' W. & 30' S. of NW Cor. NE 1/4 NE 1/4 Sec. 36-265-1E. Elev. 188.67
3. Top of iron pipe at SW Cor. of NE 1/4 NE 1/4 Sec. 36-265-1E. (SW Cor. Lot 29 Block 1). Elev. 182.35
4. Top of steel "T" post driven flush with the ground. 5' N. & 55' W. of SE Cor. NE 1/4 NE 1/4 Sec. 36. Elev. 178.07
5. City of Wichita std. BM disc at 37th & Woodlawn. 75.7' E. & 56.3' S. of center of intersection. Elev. 182.04

*Revised 2-17-93
 JKB
 from AS BUILTS*

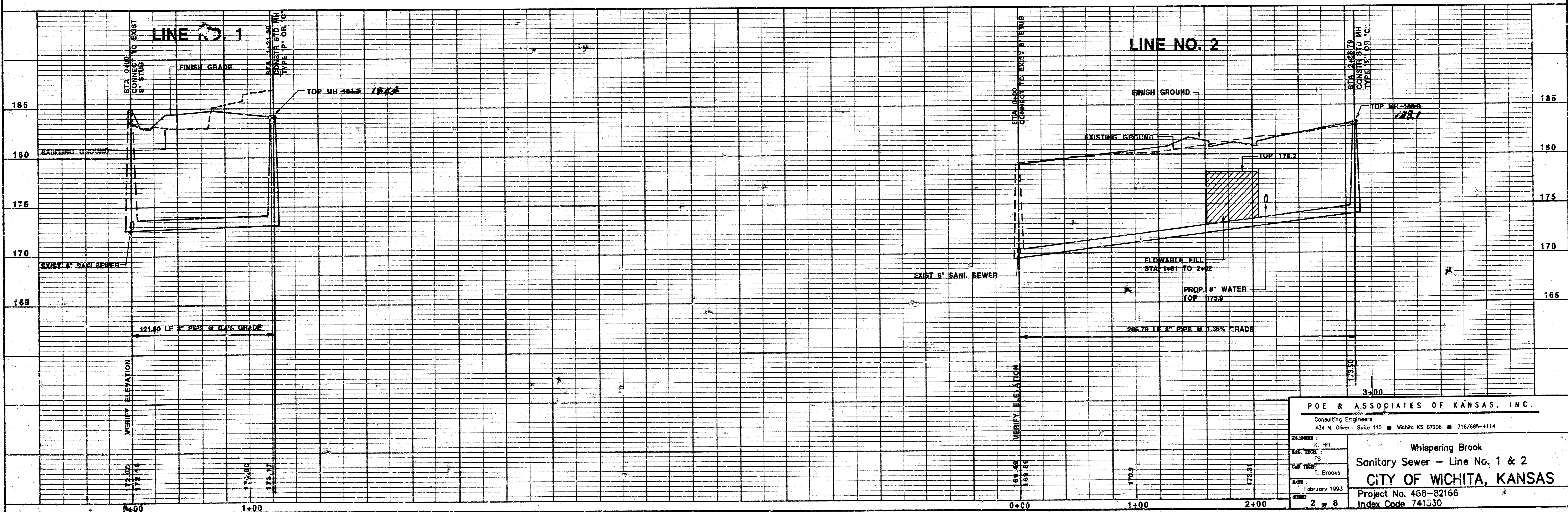
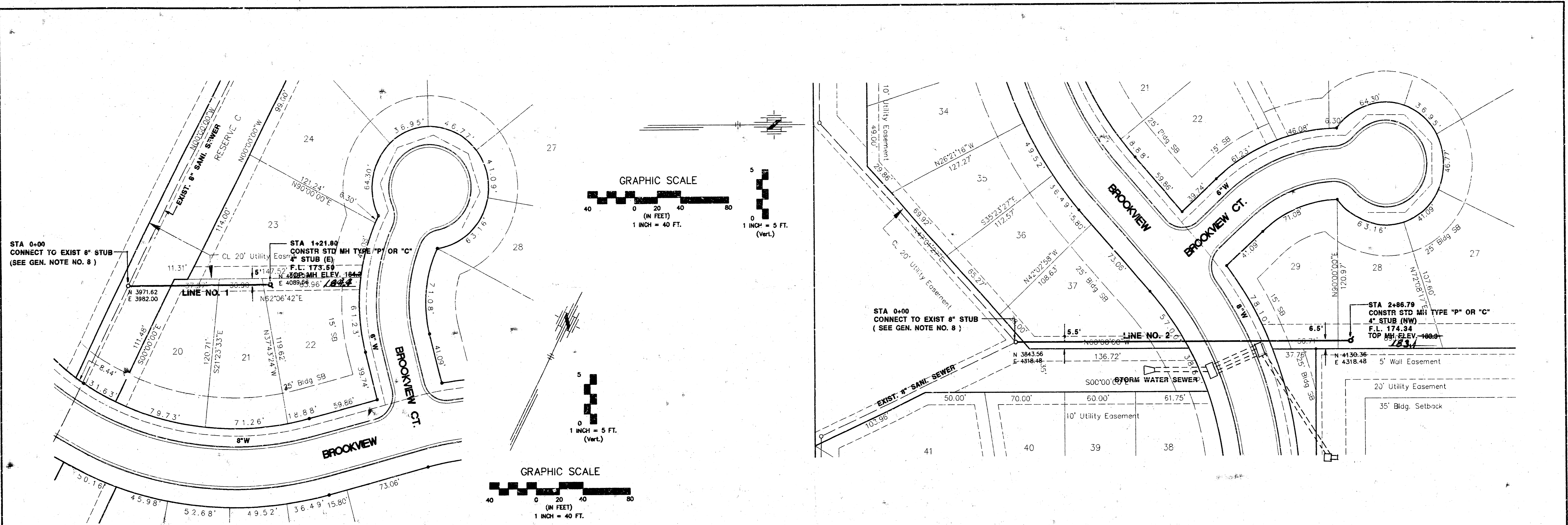
**AS BUILTS
 CONSTRUCTED AS
 PER/PLANS**

FEBRUARY 1993

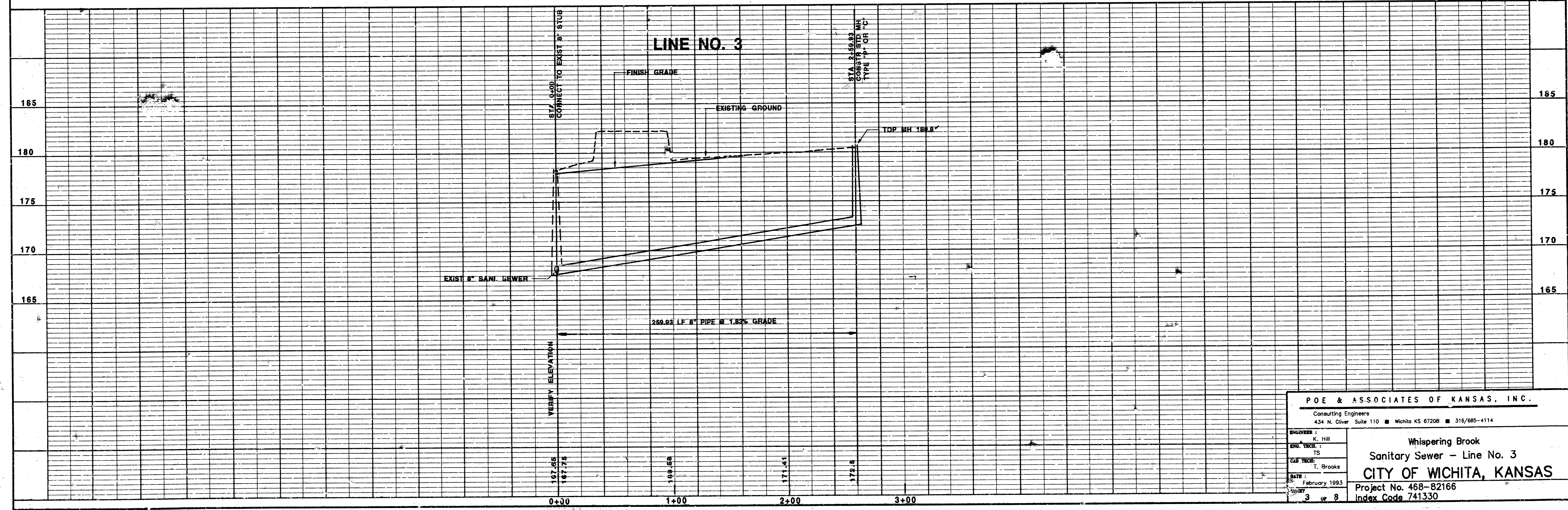
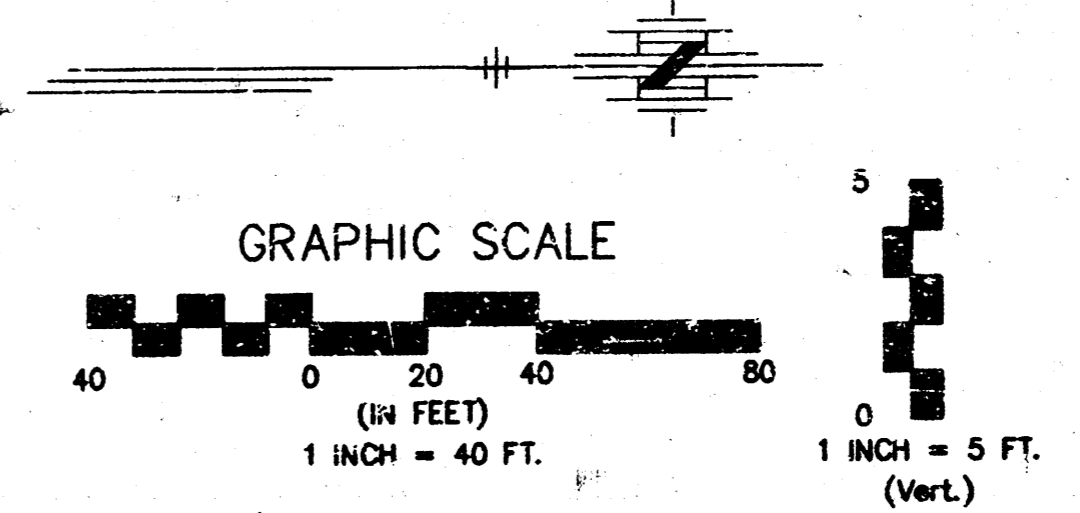
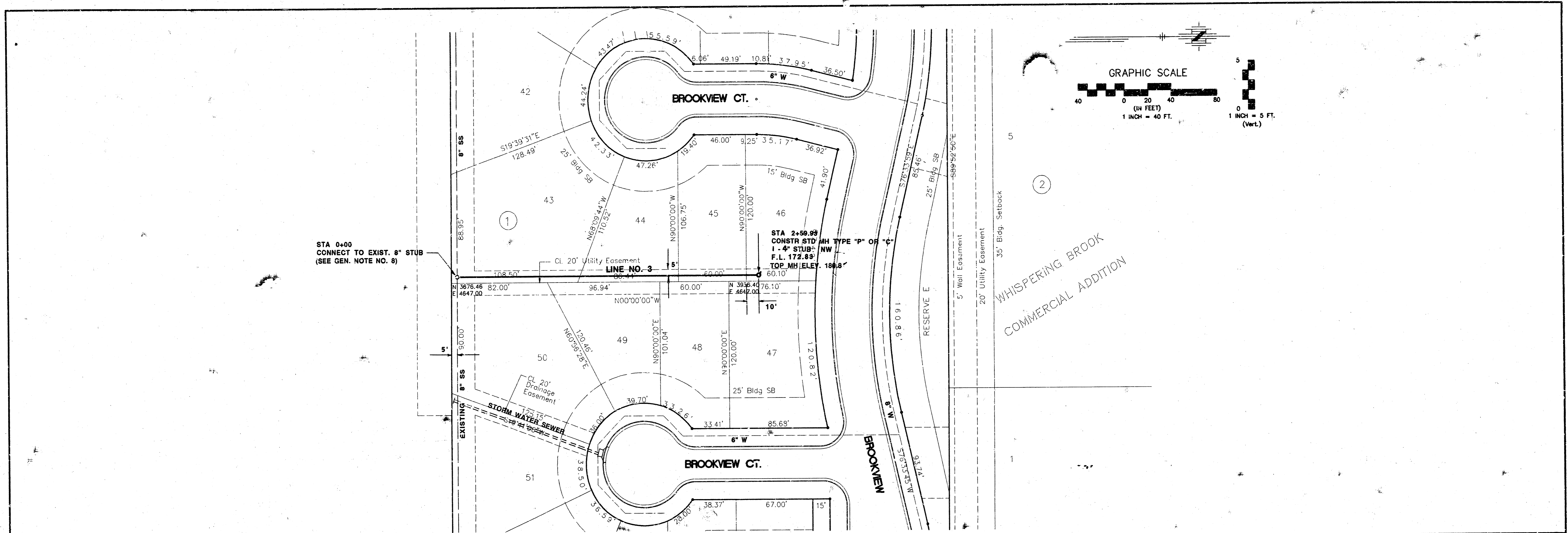
PLANS PREPARED
 BY
 POE & ASSOCIATES OF KANSAS, INC.
 Consulting Engineers
 434 N. Oliver Suite 110 Wichita KS 67208 316/585-4114



Time is: 7:44:11
 Date is: 12-31-1992
 Drawing File: C:\OCA\1520\SS1
 R11 62

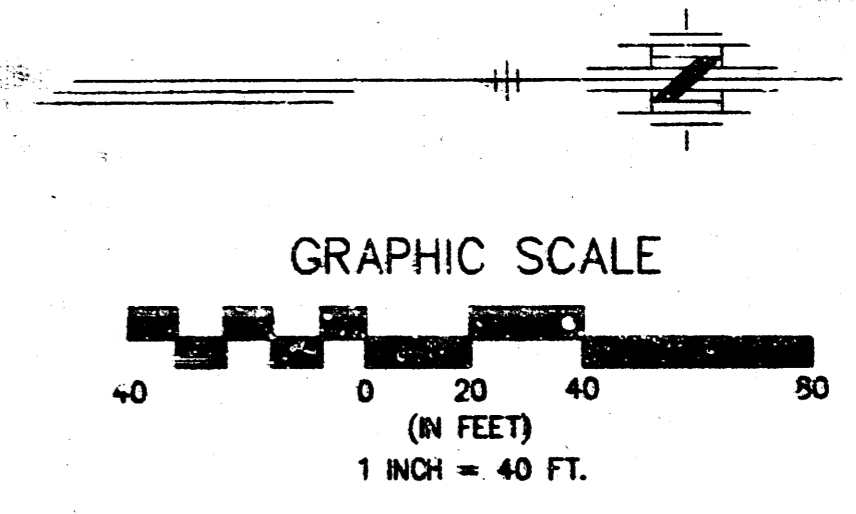
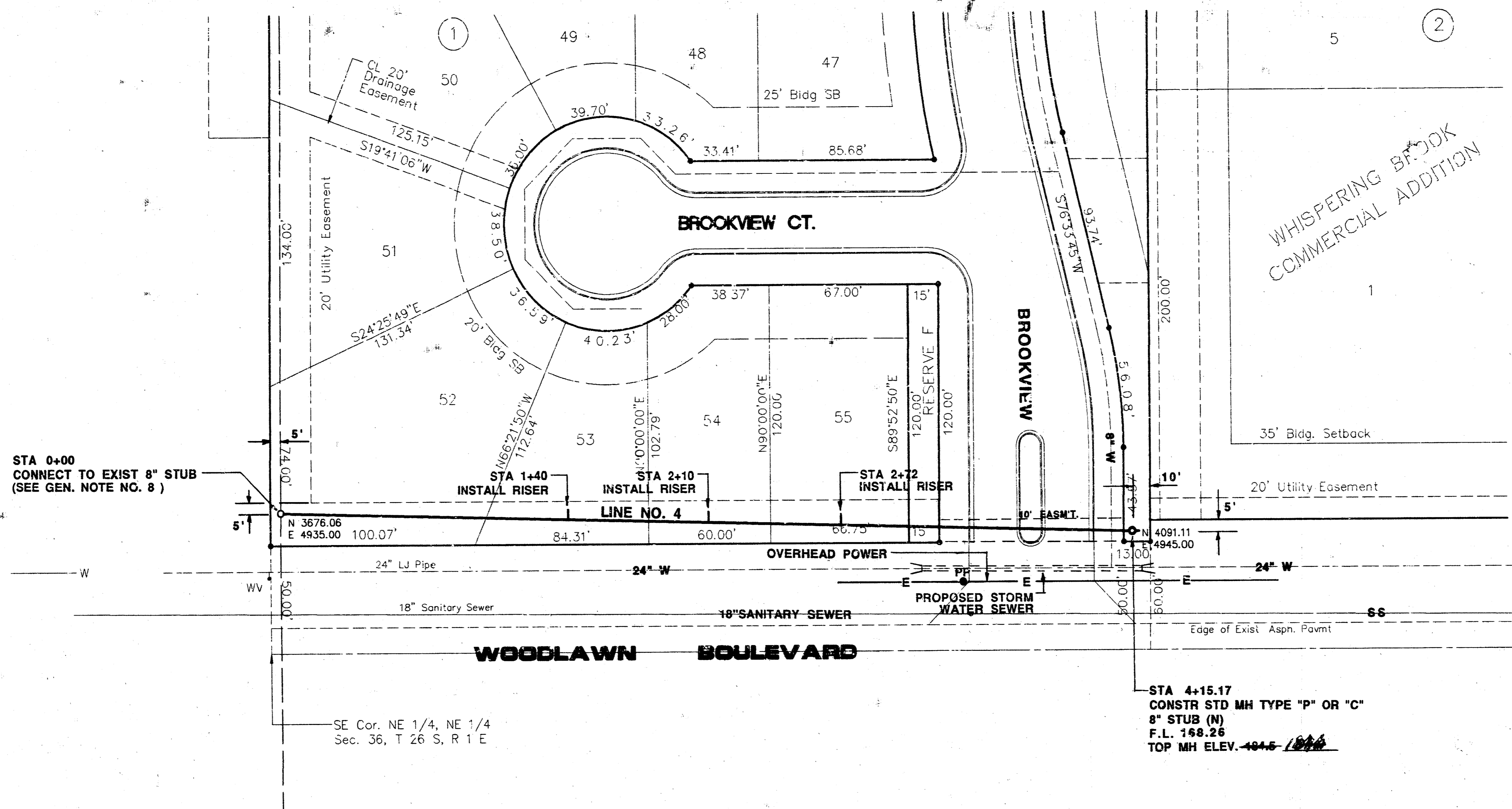


Time is: 9:19:13
 Date is: 2/1/93
 Drawing File: C:\OGA\1520\SS2
 R11.c2

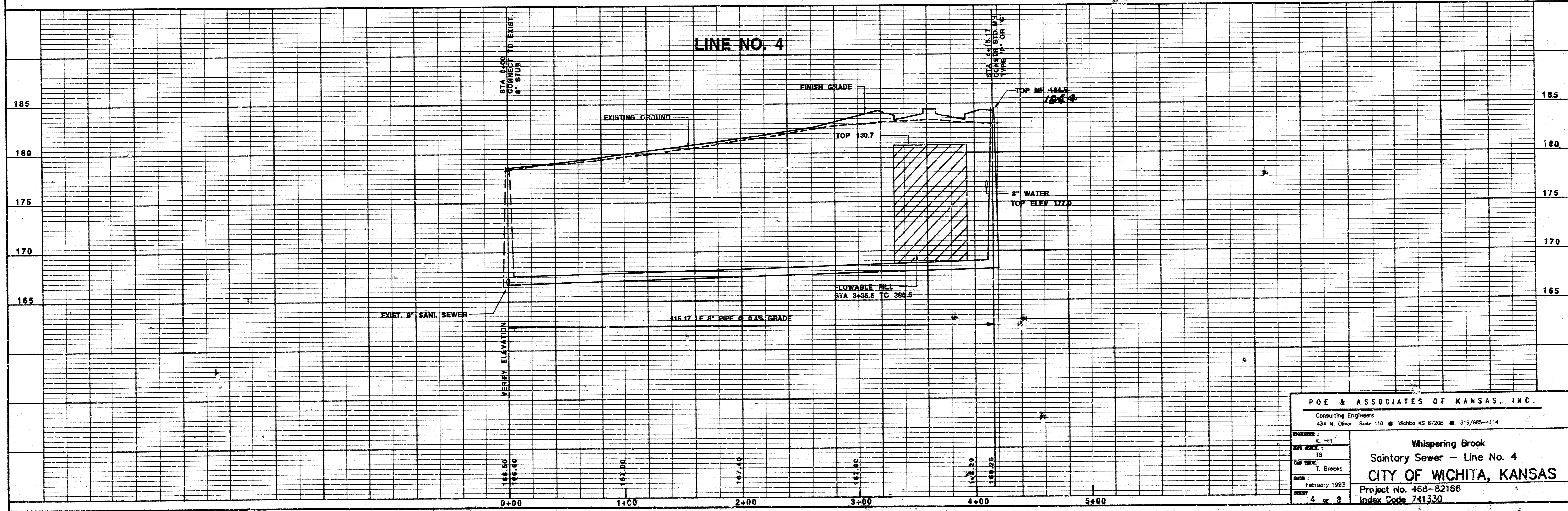


| | |
|--|---|
| POE & ASSOCIATES OF KANSAS, INC. Consulting Engineers 434 N. Oliver Suite 110 ■ Wichita KS 67208 ■ 316/685-4114 | |
| ENGINEER: K. Hill CHECKED: TS DATE: February 1993 | Whispering Brook Sanitary Sewer - Line No. 3 CITY OF WICHITA, KANSAS Project No. 468-82166 Index Code 741350 |

Time is: 10:28:23
 Date is: 12-18-1992
 Drawing File: C:\ADCA\1520\SS3
 R11 C2



| RISER SUMMARY - LINE 4 | | | |
|------------------------|------|-----------|-------------|
| STA | SIZE | FLOW LINE | TOP OF PIPE |
| 1+40 | 4" | 167.16 | 174.0 |
| 2+10 | 4" | 167.44 | 174.3 |
| 2+72 | 4" | 167.68 | 174.5 |



P.O.E. & ASSOCIATES OF KANSAS, INC.
 Consulting Engineers
 434 N. Oliver Suite 110 Wichita KS 67208 316/685-4114

ENGINEER: K. Hill
 SURVEILLOR: T. Brooks
 DATE: February 1993
 SHEET: 4 of 8

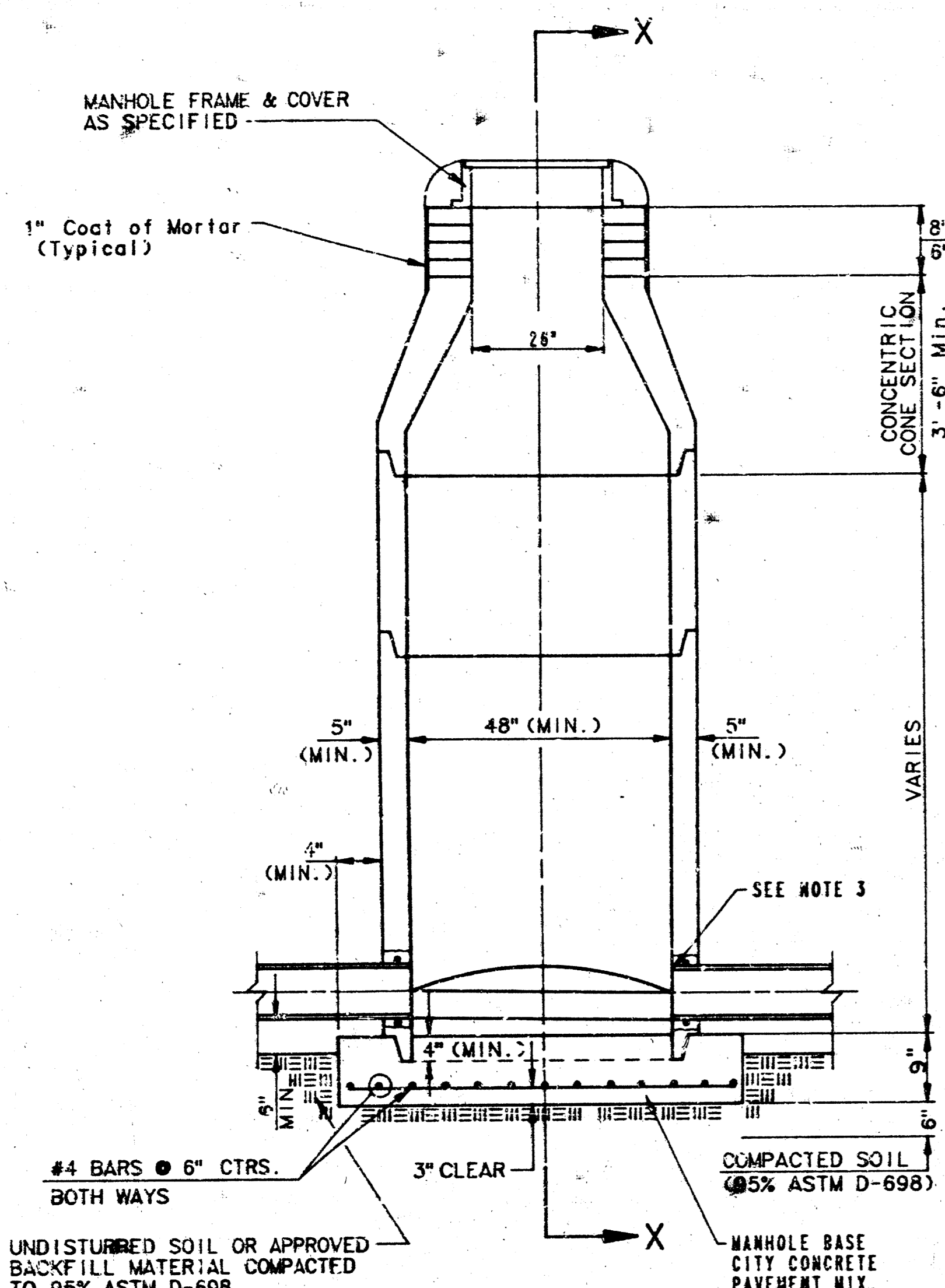
Whispering Brook
 Saintry Sewer - Line No. 4
CITY OF WICHITA, KANSAS
 Project No. 468-82166
 Index Code 741330

SEWER APPURTENANCES DETAILS

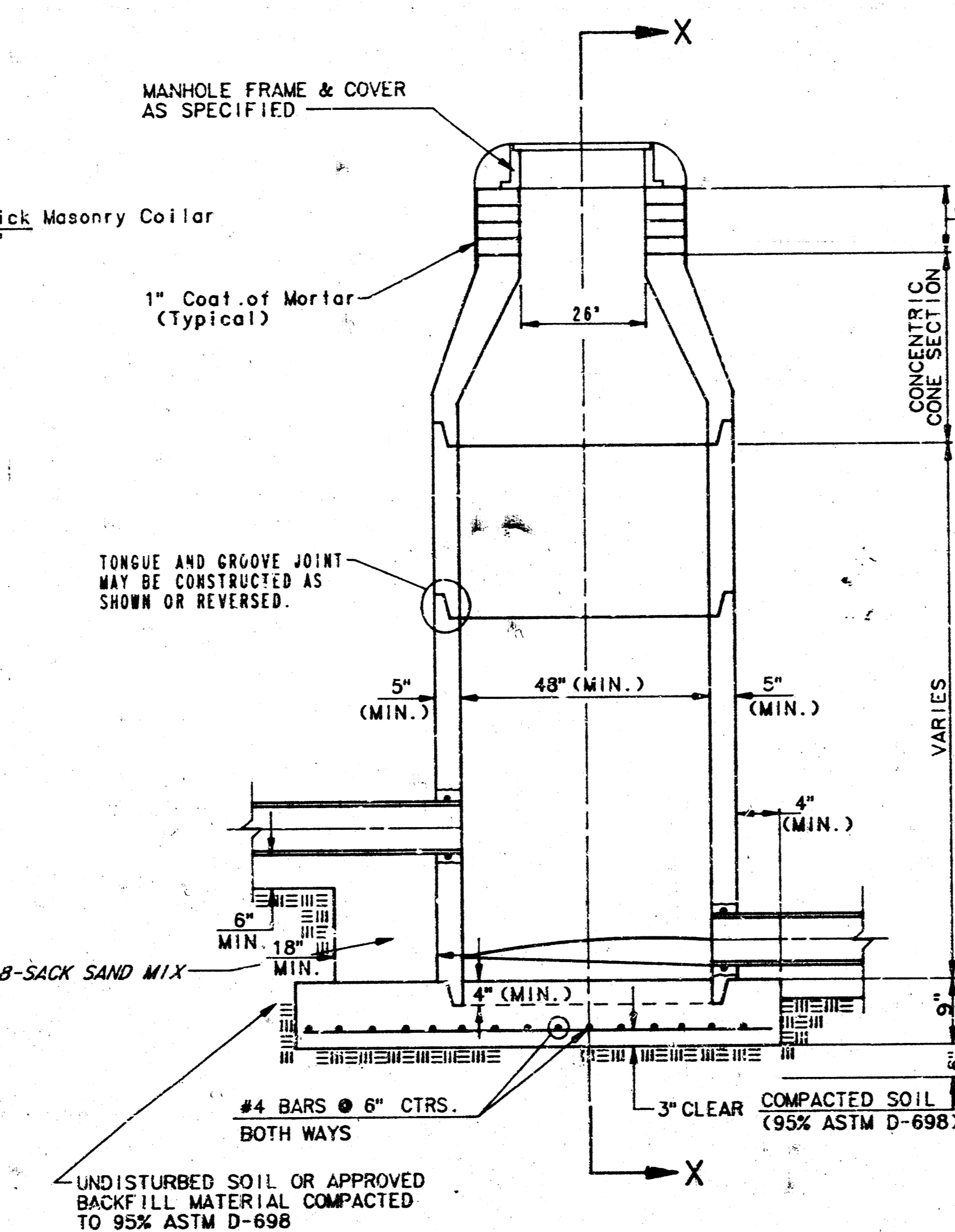
ADOPTED AS STANDARD DESIGN

BY

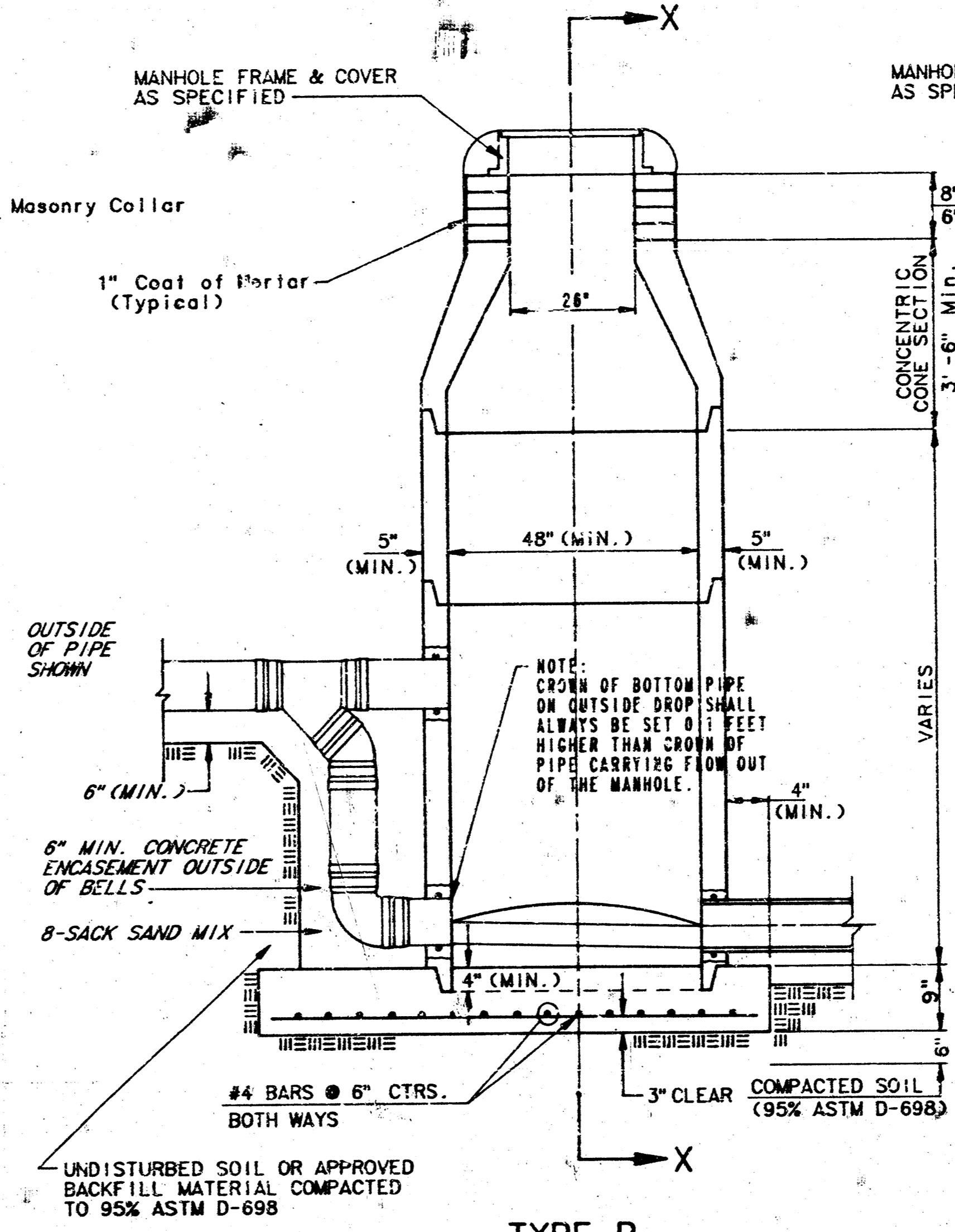
CITY OF WICHITA



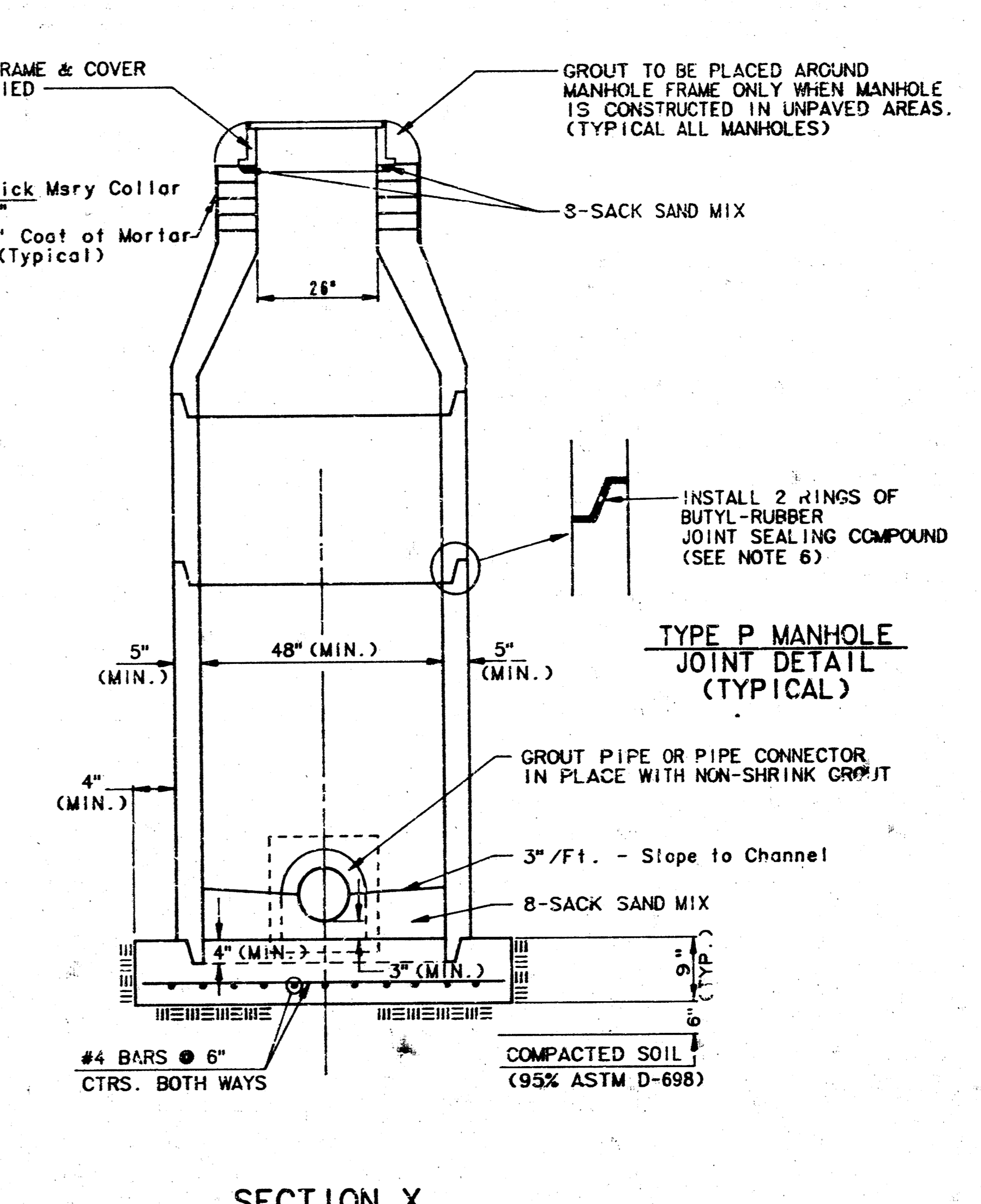
**TYPE P
STANDARD MANHOLE**



**TYPE P
INSIDE DROP MANHOLE**



**TYPE P
OUTSIDE DROP MANHOLE**



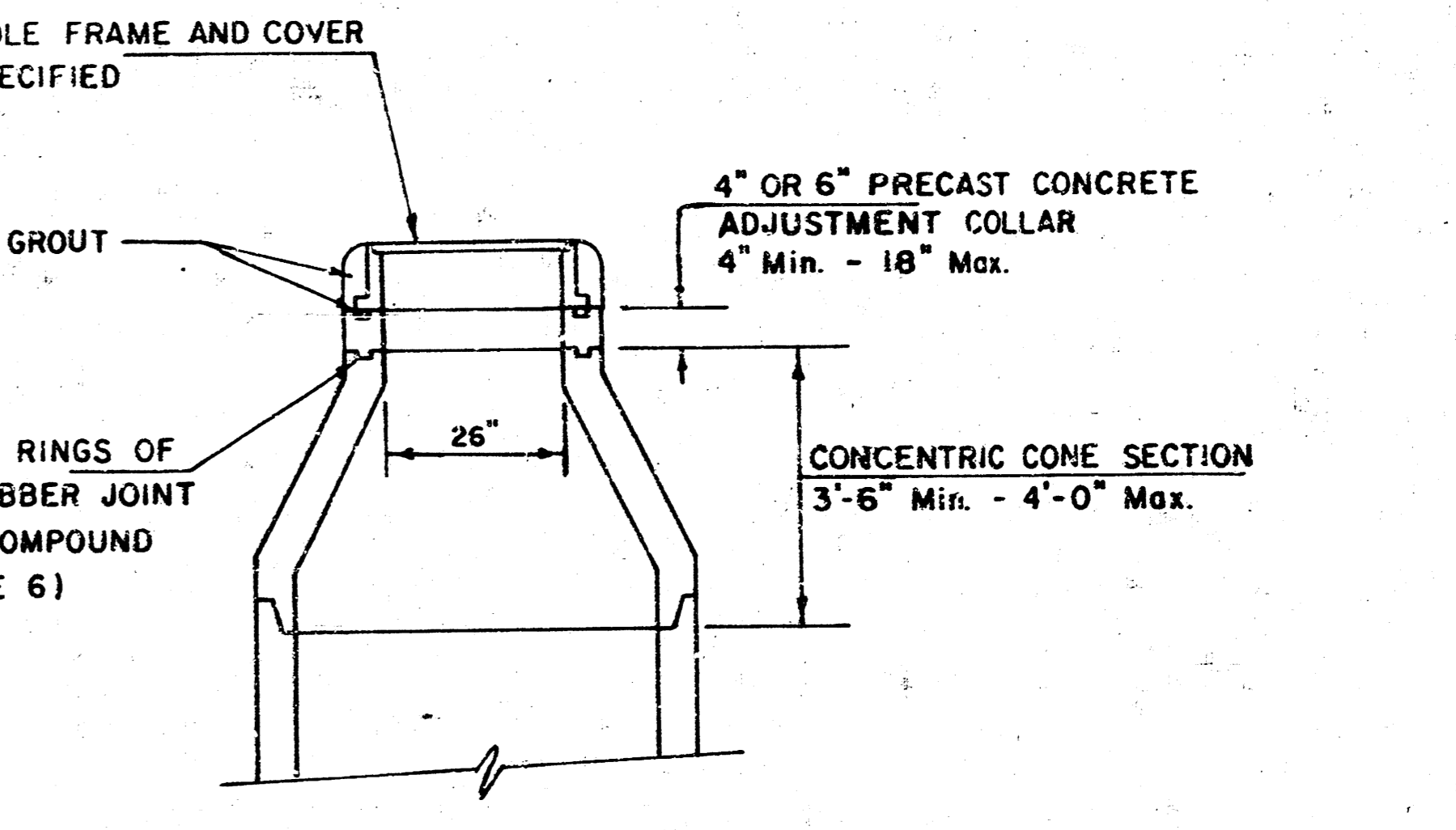
**SECTION X
(TYPICAL)**

GENERAL NOTES
PRECAST MANHOLE NOTES

1. ALL PRECAST CONCRETE MANHOLE SECTIONS SHALL CONFORM TO THE LATEST REVISION OF A.S.T.M. C478 AS MODIFIED BY THE SPECIFICATIONS.
2. NON-SHRINK GROUT SHALL BE NON-METALLIC TYPE.
3. APPROVED FLEXIBLE WATERSTOP GASKETS SHALL BE INSTALLED TO JOIN THE SEWER TO THE MANHOLE WALL WHEN A.B.S. COMPOSITE PIPE OR P.V.C. PIPE IS USED. FOR OTHER TYPES OF PIPE THE SEWER SHALL BE GROUTED IN PLACE WITH NON-SHRINK GROUT. THE SEWER PIPE SHALL BE SUPPORTED WITH CONCRETE ENCASUREMENT A MINIMUM OF 3 FEET FROM THE MANHOLE WALL AND TO THE FIRST JOINT FOR V.C.P. SUCH THAT THE JOINT REMAINS FLEXIBLE.
4. ALL INSIDE SURFACES OF THE CONCRETE MANHOLE WHICH WOULD BE EXPOSED TO SEWER GAS SHALL BE COATED WITH 2 COATS TRIMEC SERIES 46 HI-BUILD EPOXY/PAE, DRY THICKNESS OF 4 MILS (MIN.).
5. EXTERIOR MANHOLE WALLS SHALL BE COATED WITH 1 COAT MOBILARMA 633 BITUMINUS COATING.
6. JOINT SEALING COMPOUND SHALL BE KENT SEAL NO. 2 OR APPROVED EQUAL.
7. PRECAST MANHOLES SHALL BE SET AT LEAST 4 INCHES INTO THE MANHOLE BASE.
8. TOP OF MANHOLE FLOOR SLAB SHALL BE AT LEAST 3 INCHES BELOW THE FLOW LINE OF THE OUTLET PIPE TO INSURE SUFFICIENT MINIMUM THICKNESS OF SHAPED INVERT.
9. LIFTING HOLES SHALL BE FILLED WITH NON-SHRINK GROUT AND THE INTERIOR SURFACE COATED AS SPECIFIED.
10. MORTAR USED IN MASONRY CONSTRUCTION SHALL CONTAIN 8 SACKS OF CEMENT PER CUBIC YARD. CONCRETE USED IN MANHOLE BASES SHALL CONFORM TO THE REQUIREMENTS OF CONCRETE FOR CONCRETE PAVEMENT CONSTRUCTION AS SPECIFIED IN THE CITY STANDARD PAVING SPECIFICATIONS USING CITY CONCRETE PAVEMENT MIX WITHOUT AIR ENTRAINING AD MIXTURE. MORTAR SHALL BE PLACED AROUND THE MANHOLE RING AS SHOWN ON THE DRAWINGS WHEN MANHOLES ARE CONSTRUCTED IN UNPAVED AREAS. MANHOLES CONSTRUCTED WHERE PIPE SIZES ARE SMALLER THAN 24" SHALL HAVE AN INSIDE DIAMETER OF 4". MANHOLES CONSTRUCTED WHERE PIPE SIZES ARE 24" OR LARGER SHALL HAVE AN INSIDE DIAMETER OF 5". COMPLETED MANHOLE SHALL BE WITHOUT LEAKS AND WATER TIGHT.

11. REINFORCING STEEL SHALL BE INSTALLED IN THE MANHOLE BASES AND SHALL CONSIST OF NO. 4 BARS PLACED ON 6" CENTERS IN BOTH DIRECTIONS. THE MANHOLE BASE REINFORCEMENT SHALL BE PLACED AT LEAST 3" ABOVE THE BOTTOM OF THE MANHOLE BASE. ALL COSTS FOR FURNISHING AND INSTALLING REINFORCING STEEL SHALL BE INCLUDED IN THE UNIT PRICE BID FOR THE MANHOLE.
12. OPENINGS SHALL BE CUT INTO THE MANHOLE WALL WHEN OUTSIDE DROPS ARE CONSTRUCTED ON EXISTING MANHOLES. SUCH OPENINGS CUT INTO EXISTING MANHOLES SHALL BE AS SMALL AS PRACTICAL TO FACILITATE INSTALLING AND GROUTING THE NEW PIPE IN PLACE. WATERSTOP GASKETS SHALL BE USED WITH P.V.C. AND A.B.S. COMPOSITE PIPE. THE NEW PIPE SHALL BE GROUTED INTO THE OPENING USING AN APPROVED NONSHRINK GROUT FOR THE FULL MANHOLE WALL THICKNESS. THE EXTERIOR OF THE COMPLETED CONNECTION SHALL BE SEALED WITH AN APPROVED BITUMINOUS COATING SUCH THAT THE CONNECTION WILL BE WATER TIGHT. FLOOR OF MANHOLE SHALL BE MODIFIED TO FORM NEW FLOW CHANNEL FOR THE NEW CONNECTION AS INDICATED BY THE DRAWING. THIS WORK, INCLUDING MODIFICATION OF MANHOLE FLOOR, SHALL BE PAID FOR AT THE UNIT PRICE BID FOR OUTSIDE DROP STACK CONSTRUCTED ON EXISTING MANHOLE.
13. THE FLOORS OF ALL MANHOLES SHALL BE SHAPED WITH FLOW CHANNELS SUCH THAT THE MANHOLES WILL BE SELF-CLEANING AND FREE OF AREAS WHERE SOLIDS COULD BE DEPOSITED AS SEWAGE FLOWS THROUGH THE MANHOLE FROM ALL INLET PIPES TO THE OUTLET PIPE. FLOW CHANNELS SHALL BE FORMED TO MATCH THE BOTTOM HALVES OF THE INFLOWING PIPES AND THE OUTFLOWING PIPE AS SHOWN BY THE DRAWINGS EXCEPT FOR INSIDE DROP MANHOLES. FLOW CHANNELS FOR INSIDE DROP MANHOLES SHALL BE CONSTRUCTED AS INDICATED BY THE DRAWING. MANHOLE FLOORS SHALL HAVE SLOPES OF 3 INCHES PER FOOT IN THE AREAS OUTSIDE OF THE FLOW CHANNELS SLOPED TOWARD THE FLOW CHANNELS. PIPES LAID THROUGH MANHOLES SHALL HAVE THE TOP HALF REMOVED TO NEAR LINES FOR THE FULL INSIDE DIAMETER OF THE MANHOLE. MANHOLE FLOORS SHALL THEN BE SHAPED AROUND THE BOTTOM HALF OF THE PIPE WHICH FORMS THE FLOW CHANNEL.
14. PIPES INSTALLED WITHIN THE EXCAVATION MADE FOR THE MANHOLE SHALL BE CRADLED WITH CONCRETE TO THE LIMITS OF THE MANHOLE EXCAVATION. WHEN CLAY PIPE IS USED, THE CRADLE SHALL EXTEND TO THE FIRST JOINT OUTSIDE THE MANHOLE. THE CRADLE SHALL BE TERMINATED AT THE CLAY PIPE JOINT IN A MANNER WHICH WILL MAINTAIN THE FLEXIBILITY OF THE JOINT. COST OF CRADLE WITHIN MANHOLE EXCAVATION OR TO CLAY PIPE JOINTS ADJACENT TO MANHOLE SHALL BE INCLUDED IN THE UNIT PRICE BID FOR THE MANHOLE.

15. MANHOLE COVER CASTINGS AND MANHOLE FRAME CASTINGS SHALL CONFORM TO THE REQUIREMENTS AS INDICATED IN THE STANDARD SPECIFICATIONS AND AS SHOWN IN THE STANDARD DETAIL DRAWINGS.
16. THE VERTICAL FREE FALL DROP INSIDE MANHOLES SHALL NOT EXCEED 2'. THE CROWNS OF INFLOWING PIPES SHALL NEVER BE SET LOWER THAN THE CROWN OF THE OUTFLOWING PIPE.
17. STANDARD MANHOLES AND STANDARD INSIDE DROP MANHOLES SHALL BE BID AS STANDARD MANHOLES FOR THE TYPE AND DIAMETER INDICATED. OUTSIDE DROP MANHOLES SHALL BE BID AS STANDARD OUTSIDE DROP MANHOLES FOR THE TYPE AND DIAMETER INDICATED. ALL MANHOLE DIAMETERS WILL BE 4" UNLESS INDICATED OTHERWISE.
18. A BRICK MASONRY COLLAR SHALL BE INSTALLED BETWEEN THE CAST IRON FRAME AND THE CONCENTRIC CORE. THE COLLAR WILL HAVE 8" WALLS AND A VERTICAL HEIGHT OF 6" MINIMUM AND 18" MAXIMUM. A 1" COAT OF MORTAR WILL BE PLASTERED ON THE OUTSIDE OF THE COLLAR.



**ALTERNATE CONSTRUCTION
IN UNPAVED AREAS**

NOTE NO. 16 REVISED JAN. 1991
Revised 3-21-89
Revised 8-10-88
Revised: June 12, 1985

| | |
|--|--|
| PDE & ASSOCIATES OF KANSAS, INC. | |
| Consulting Engineers 434 N. Oliver Suite 110 Wichita KS 67208 316/645-4114 | |
| PROJECT: K. Hill DATE: 10-26-87 DRAWN BY: T. Brooks CHECKED BY: DATE: February 1993 SHEET: 5 of 8 | Whispering Brook Sanitary Sewer CITY OF WICHITA, KANSAS Project No. 468-82166 Index Code 741330 |

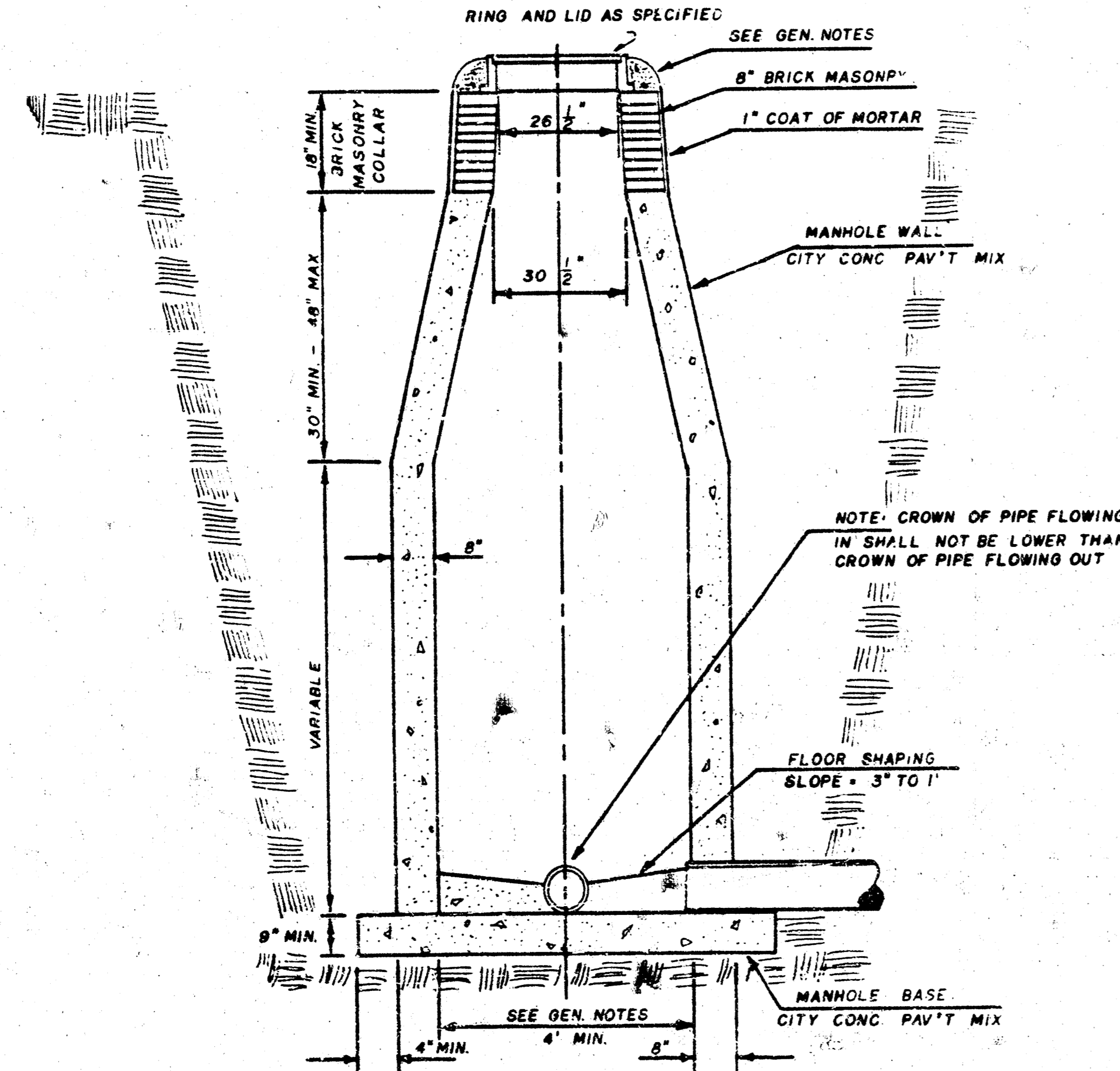
SEWER APPURTENANCES DETAILS

ADOPTED AS STANDARD DESIGN

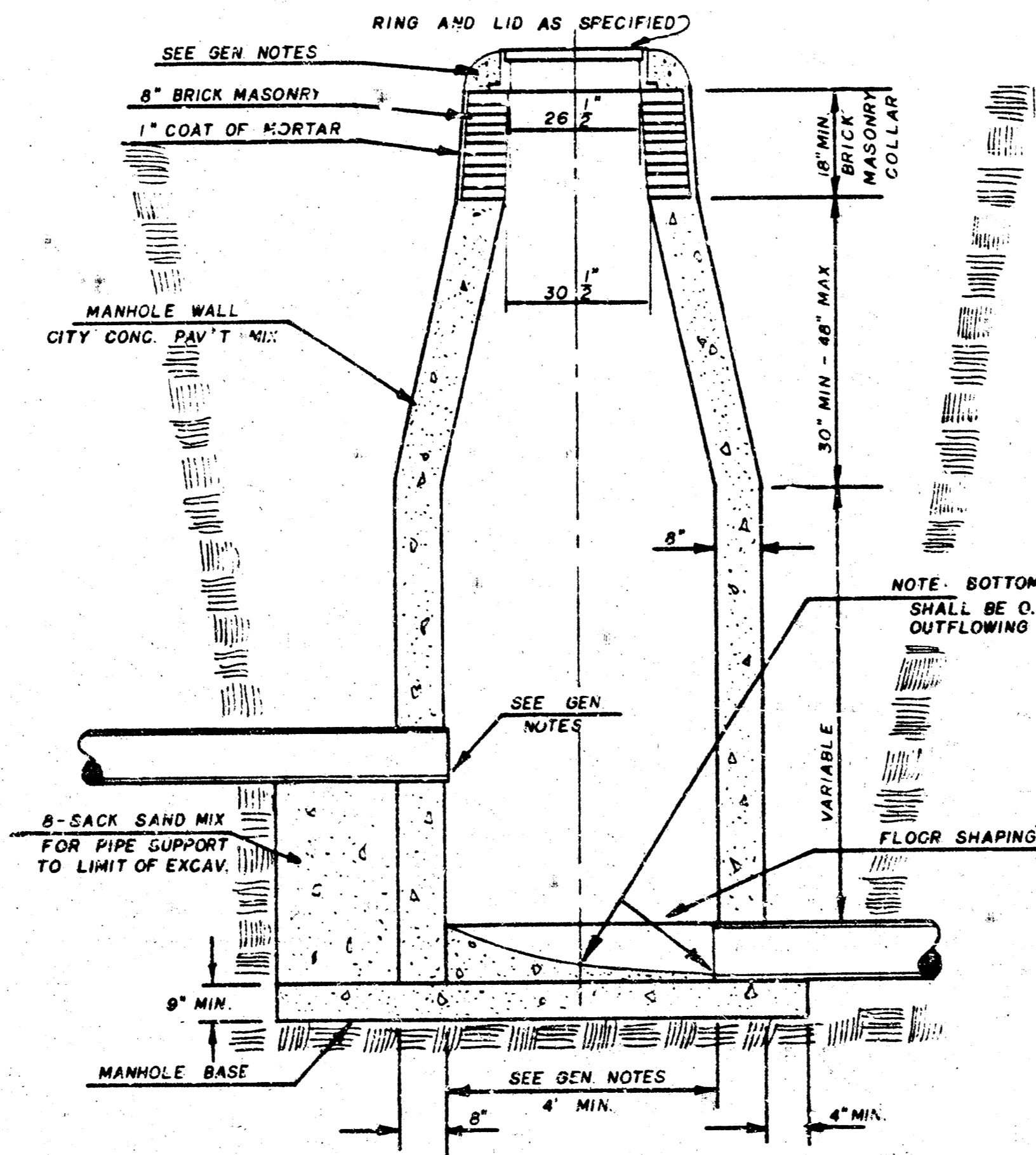
BY

City of Wichita, Kansas

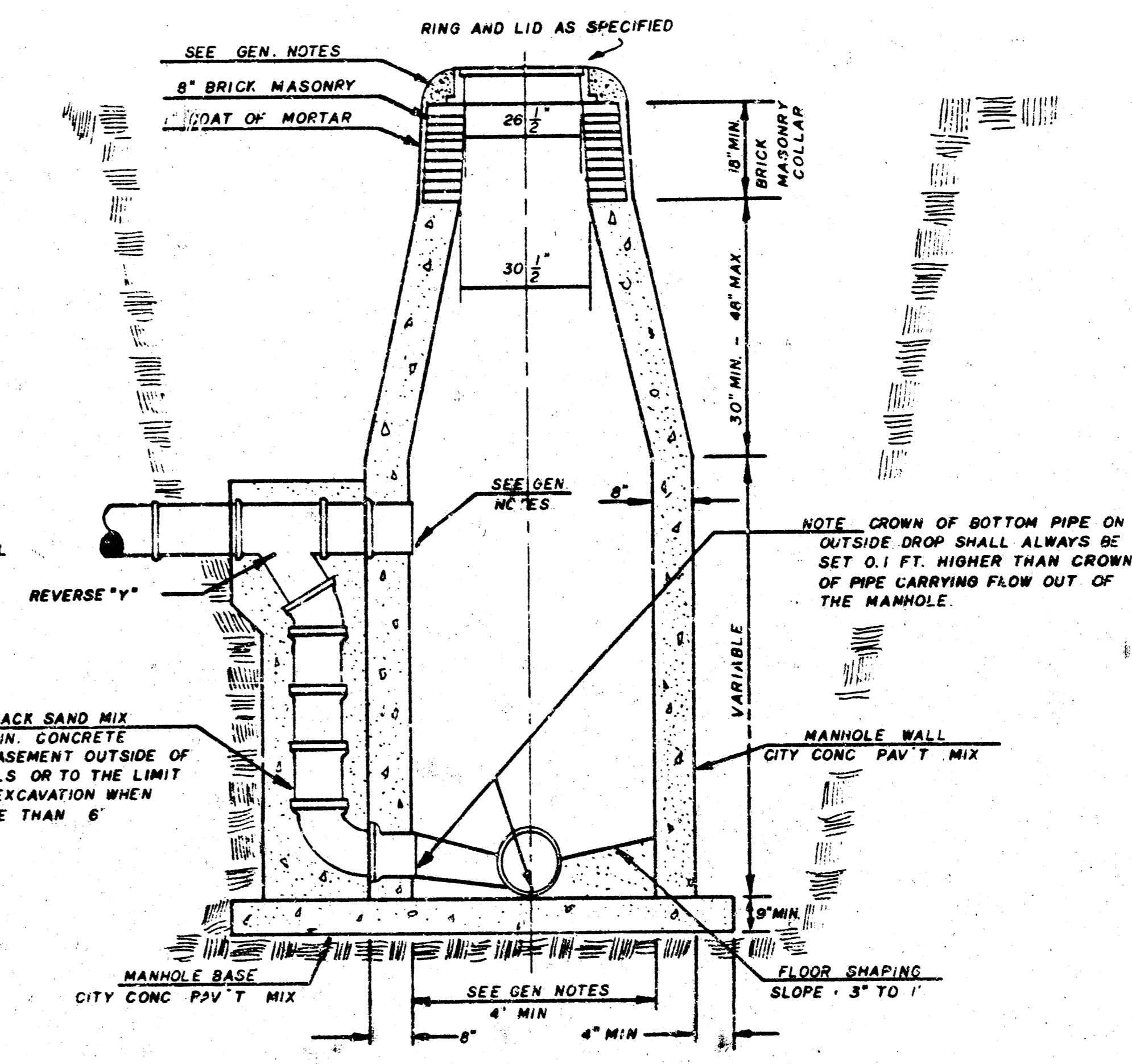
STANDARD MANHOLE TYPE "C"



INSIDE DROP MANHOLE TYPE "C"



OUTSIDE DROP MANHOLE TYPE "C"



GENERAL NOTES

- MORTAR USED IN MASONRY CONSTRUCTION SHALL CONTAIN 8 SACKS OF CEMENT PER CUBIC YARD. CONCRETE USED IN MANHOLE WALLS AND BASES SHALL CONFORM TO THE REQUIREMENTS OF CONCRETE FOR CONCRETE PAVEMENT CONSTRUCTION AS SPECIFIED IN THE CITY STANDARD PAVING SPECIFICATIONS USING CITY CONCRETE PAVEMENT MIX WITHOUT AIR ENTRAINING ADMIXTURE. MORTAR SHALL BE PLACED AROUND THE MANHOLE RING AS SHOWN ON THE DRAWINGS WHEN MANHOLES ARE CONSTRUCTED IN UNPAVED AREAS. TYPE "C" MANHOLES CAN BE CONSTRUCTED ONLY WHERE PIPE SIZES ARE 8" OR SMALLER. THE INSIDE DIAMETER OF TYPE "C" MANHOLES SHALL BE 4". COMPLETED MANHOLE SHALL BE WITHOUT LEAKS AND WATER TIGHT.
- REINFORCING STEEL SHALL BE INSTALLED IN THE MANHOLE BASE. REINFORCING STEEL SHALL CONSIST OF NO. 4 BARS PLACED ON 6" CENTERS IN BOTH DIRECTIONS. REINFORCING STEEL SHALL BE PLACED 6" ABOVE THE BOTTOM OF THE MANHOLE BASE. COST OF FURNISHING AND INSTALLING REINFORCING STEEL SHALL BE INCLUDED IN THE UNIT PRICE BID FOR THE MANHOLE.
- AN OPENING SHALL BE CUT IN THE MANHOLE WALL FOR THE UPPER INLET PIPE FOR INSIDE AND OUTSIDE DROP MANHOLES. THE UPPER INLET PIPE SHALL BE GROUTED INTO THIS OPENING WITH NON-SHRINKING GROUT. THE EXTERIOR OF THIS COMPLETE CONNECTION SHALL BE SEALED WITH AN APPROVED BITUMINOUS COATING SUCH THAT THE CONNECTION WILL BE WATER TIGHT.
- THE FLOORS OF ALL MANHOLES SHALL BE SHAPED WITH FLOW CHANNELS SUCH THAT THE MANHOLES WILL BE SELF-CLEANING AND FREE OF AREAS WHERE SOLIDS COULD BE DEPOSITED SO SEWAGE FLOWS THROUGH THE MANHOLE FROM ALL INLET PIPES TO THE OUTLET PIPE. FLOW CHANNELS SHALL BE FORMED TO MATCH THE BOTTOM HALVES OF THE INFLOWING PIPES AND THE OUTFLOWING PIPE AS SHOWN BY THE DRAWINGS EXCEPT FOR INSIDE DROP MANHOLES. FLOW CHANNELS FOR INSIDE DROP MANHOLES SHALL BE CONSTRUCTED AS INDICATED BY THE DRAWING. MANHOLE FLOORS SHALL HAVE SLOPES OF 3 INCHES PER FOOT IN THE AREAS OUTSIDE OF THE FLOW CHANNELS SLOPED TOWARD THE FLOW CHANNELS. PIPES LAID THROUGH MANHOLES SHALL HAVE THE TOP HALF REMOVED TO NEAT LINES FOR THE FULL INSIDE DIAMETER OF THE MANHOLE. MANHOLE FLOORS SHALL THEN BE SHAPED AROUND THE BOTTOM HALF OF THE PIPE WHICH FORMS THE FLOW CHANNEL.
- PIPES INSTALLED WITHIN THE EXCAVATION MADE FOR THE MANHOLE SHALL BE CRADLED WITH CONCRETE TO THE LIMITS OF THE MANHOLE EXCAVATION. WHEN CLAY PIPE IS USED, THE CRADLE SHALL EXTEND TO THE FIRST JOINT OUTSIDE THE MANHOLE. THE CRADLE SHALL BE TERMINATED AT THE CLAY PIPE JOINT IN A MANNER WHICH WILL MAINTAIN THE FLEXIBILITY OF THE JOINT. COST OF CRADLE WITHIN MANHOLE EXCAVATION OR TO CLAY PIPE JOINTS ADJACENT TO MANHOLE SHALL BE INCLUDED IN THE UNIT PRICE BID FOR THE MANHOLE.
- MANHOLE COVER CASTINGS AND MANHOLE FRAME CASTINGS SHALL CONFORM TO THE REQUIREMENTS AS INDICATED IN THE STANDARD SPECIFICATIONS AND AS SHOWN IN THE STANDARD DETAIL DRAWING.
- THE VERTICAL FREE FALL DROP INSIDE MANHOLES SHALL NOT EXCEED 2'. THE CROWNS OF INFLOWING PIPES SHALL NEVER BE SET LOWER THAN THE CROWN OF THE OUTFLOWING PIPE.
- STANDARD MANHOLES TYPE "C" AND STANDARD INSIDE DROP MANHOLES TYPE "C" SHALL BE BID AS STANDARD MANHOLES FOR THE TYPE AND DIAMETER INDICATED. OUTSIDE DROP MANHOLES TYPE "C" SHALL BE BID AS STANDARD OUTSIDE DROP MANHOLES FOR THE TYPE AND DIAMETER INDICATED. ALL MANHOLE DIAMETERS WILL BE 4" UNLESS INDICATED OTHERWISE.

| | |
|---|--------------------------------|
| POE & ASSOCIATES OF KANSAS, INC. | |
| Consulting Engineers 434 N. Oliver, Suite 110 ■ Wichita, KS 67208 ■ 316/685-4114 | |
| PROJECT NO. K-118 | Whispering Brook |
| DATE: 1/82 | Sanitary Sewer |
| BY: T. Brooks | CITY OF WICHITA, KANSAS |
| DATE: February 1993 | Project No. 468-82166 |
| DATE: 6/98 | Index Code 741330 |

NOTE NO. 7 REVISED JAN. 1991

VERTICAL RISER DETAILS

ADOPTED AS STANDARD DESIGN

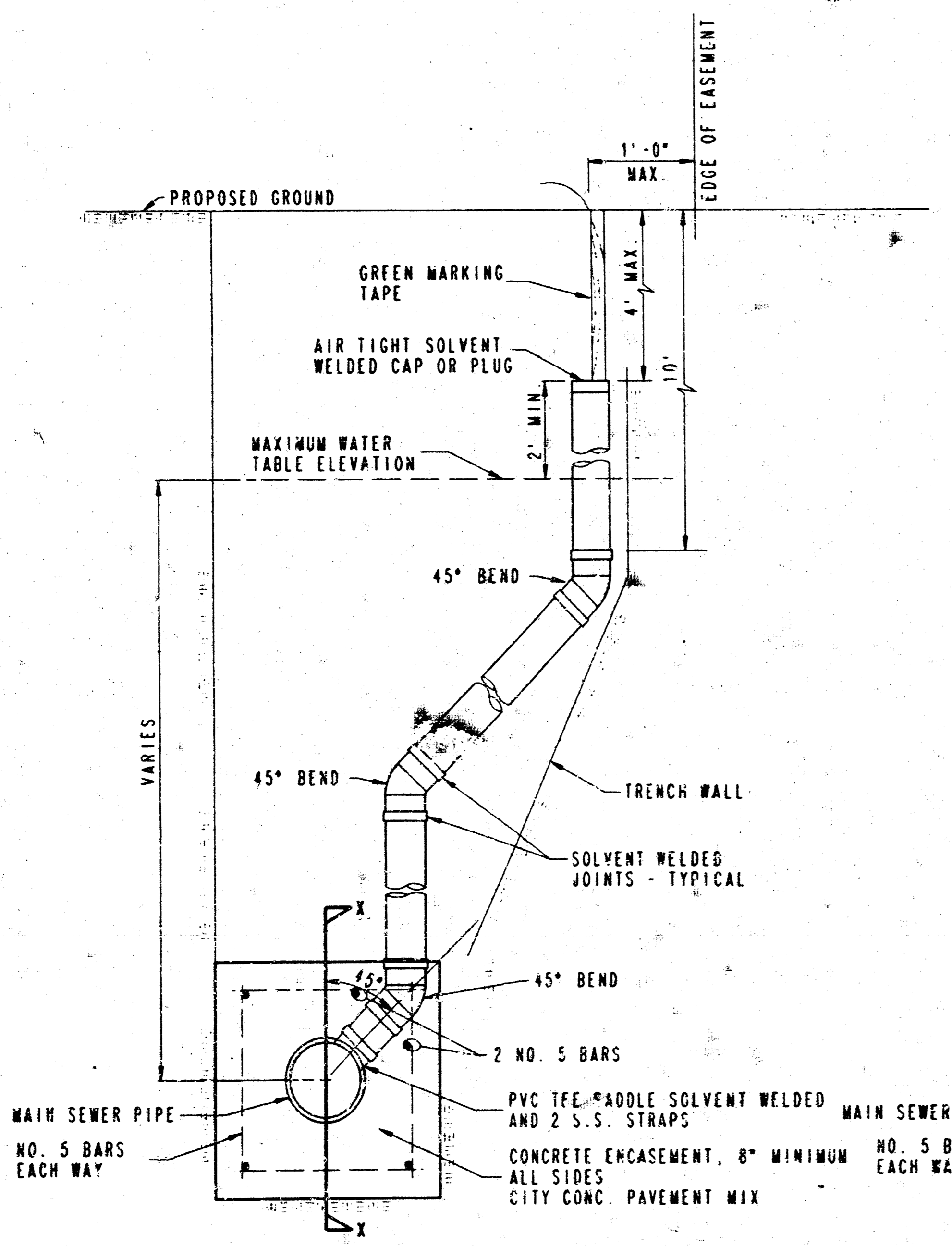
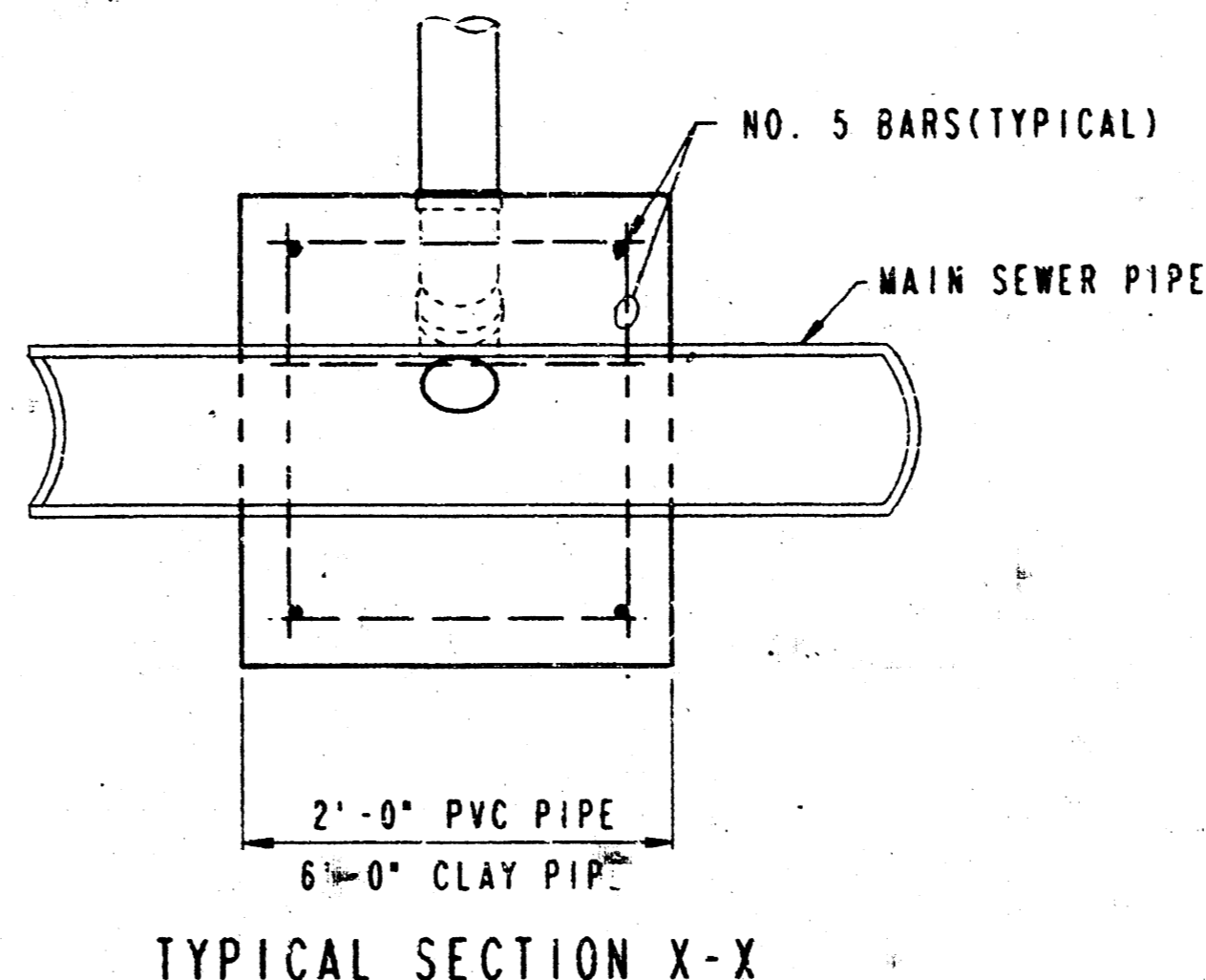
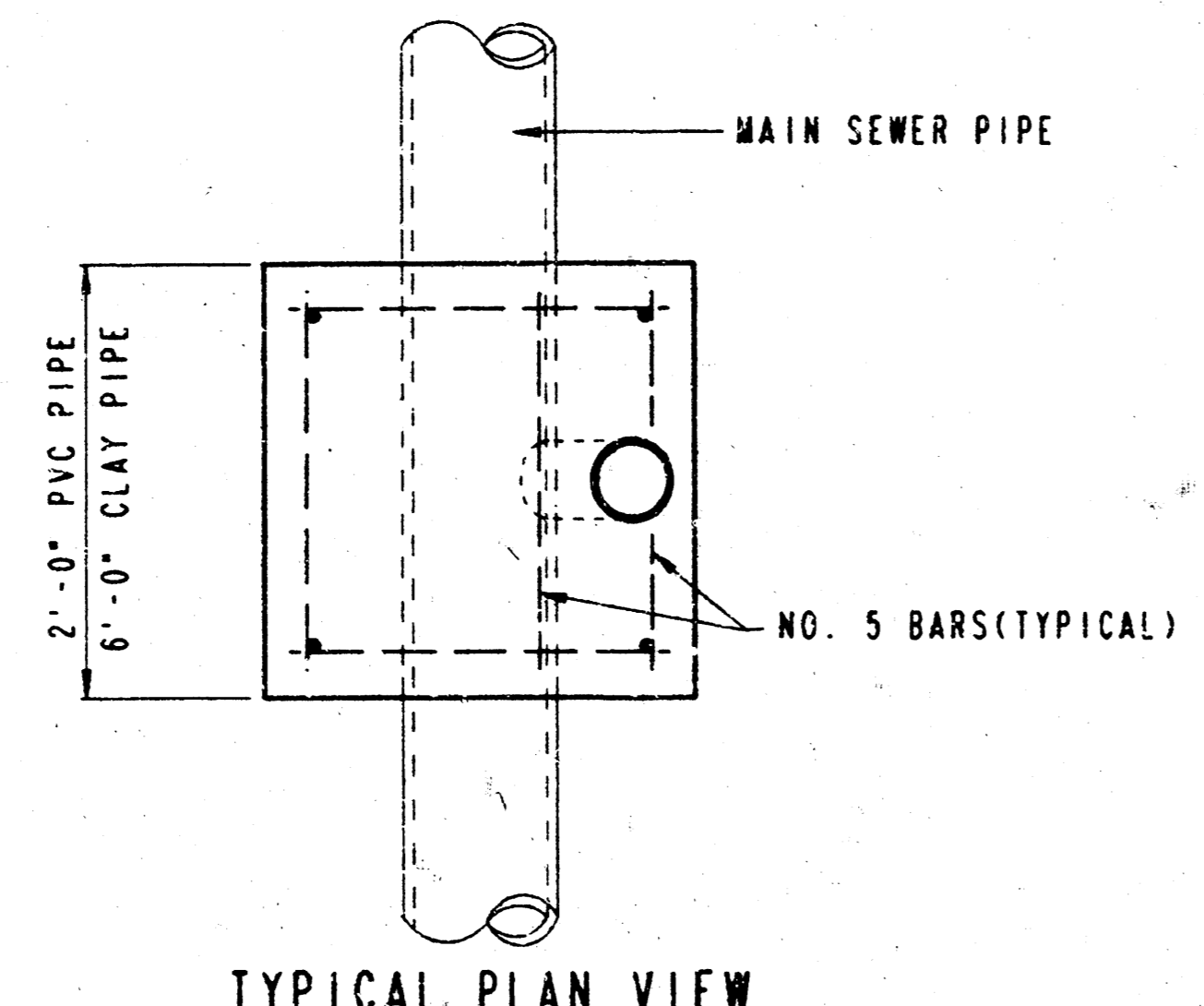
BY

CITY OF WICHITA, KANSAS

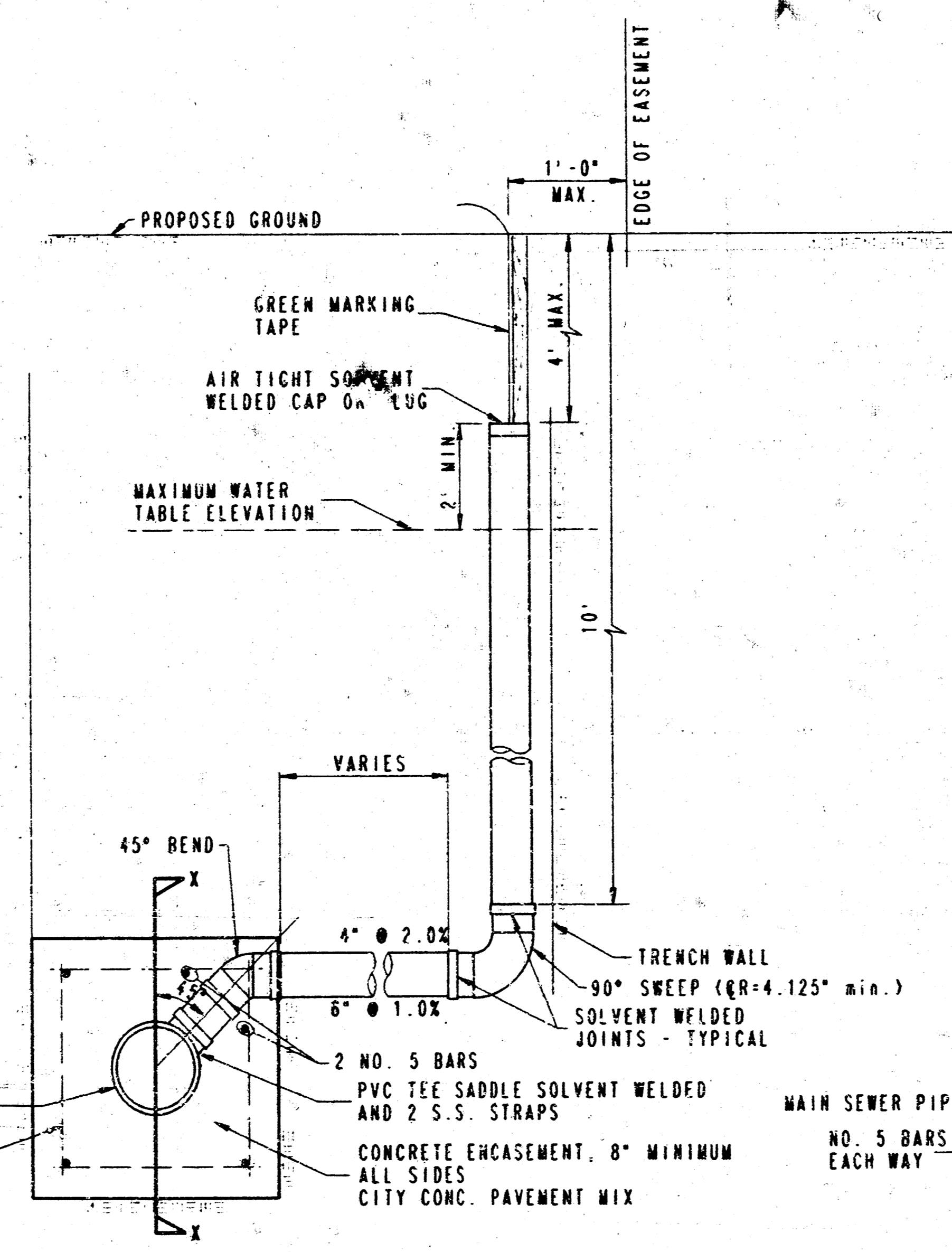
OCTOBER 1992

GENERAL NOTES

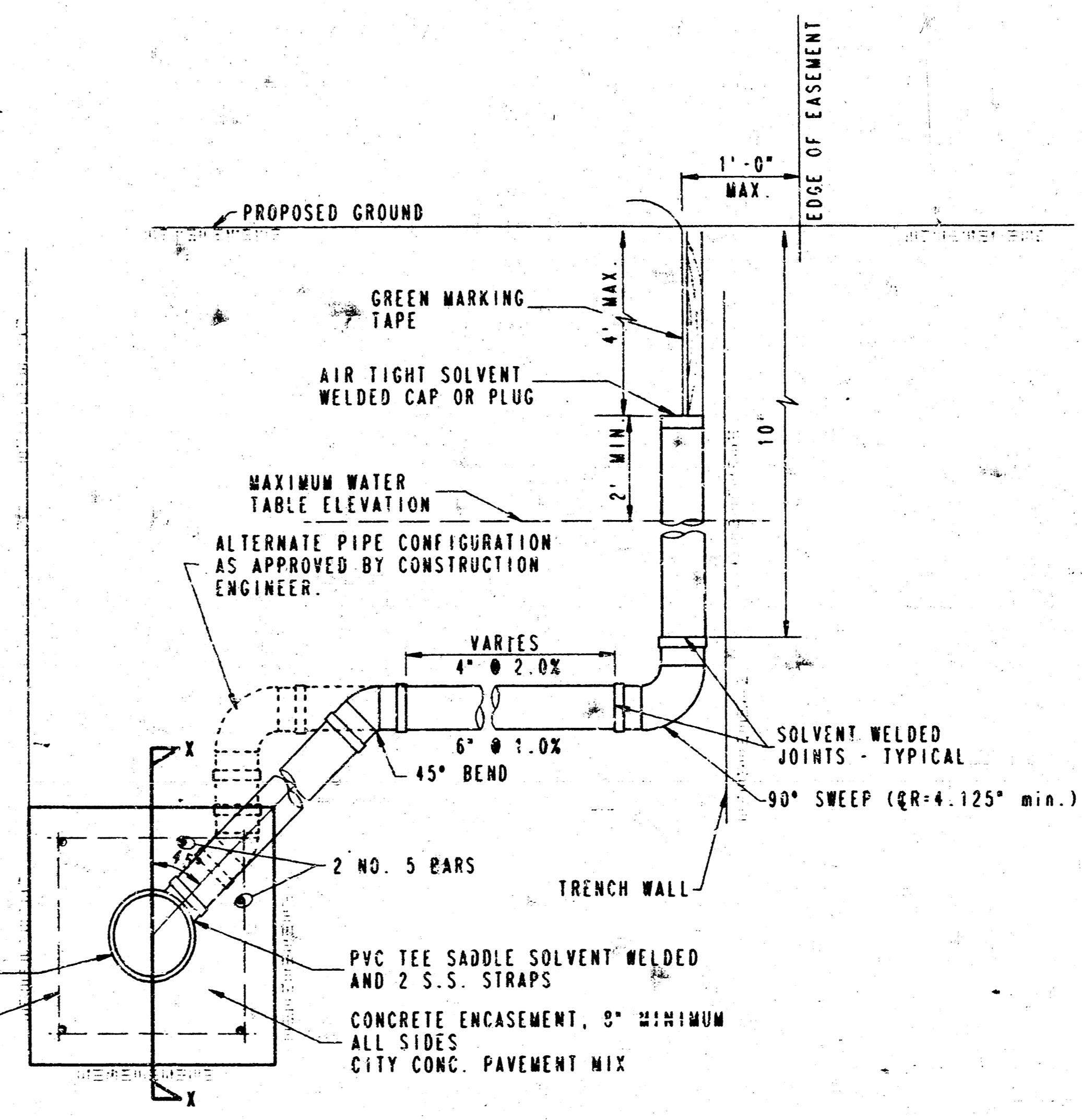
1. **RISERS.** Risers shall be installed to serve all lots or tracts where the sanitary sewer main is below the water table. Risers shall also be installed to serve all lots and tracts where the sanitary sewer main depth is greater than 12 feet below the proposed ground elevation. Installation of risers because of field conditions shall be approved by the Construction Engineer. The location of the risers to be developed properly shall be approved by the property owner and the Construction Engineer.
2. **PIPE STUBS.** Pipe stubs shall be installed in manholes where locations of manholes will provide satisfactory service connection as determined by the Construction Engineer. The vertical distance between the flowline of the manhole pipe stub and the flowline of the sanitary sewer main out of the manhole shall not exceed 2 feet. Risers shall be utilized at manhole pipe stubs as indicated in Note 1. Manhole pipe stubs shall be set such that the top of the stub is not lower than the top of the sanitary sewer main.
3. **SIZING.** Pipe stubs and risers shall be sized according to the plans and riser table where risers are indicated by the plans. Where risers or pipe stubs are required because of field conditions, the risers and stubs shall be six-inch diameter for commercial or industrial properties and 4" or 8" diameter for residential properties, based on lot size and sanitary sewer main depth. Sizing of risers and stubs shall be approved by the Construction Engineer prior to installation.
4. **RISER OR STUB MATERIAL.** Risers and stubs shall be constructed of SDR 35 PVC Pipe or Schedule 40 PVC Pipe, meeting the requirements of the latest revision of A.S.T.M. All pipe joints shall be solvent welded.
5. **REINFORCED CONCRETE ENCASEMENT.** Riser connections to clay pipe sanitary sewers shall be reinforced concrete encased both ways from the riser centerline. The reinforced concrete encasement shall extend three feet from the riser centerline or to the top of the first sanitary sewer pipe joint within three feet of the riser centerline. Riser connections to PVC Sanitary Sewer mains shall be reinforced concrete encased one foot each way from the riser centerline. The concrete encasement shall be reinforced using reinforcing steel as shown in the appropriate drawing. The concrete shall conform to the City Standard Specifications for concrete pavement.
6. **BEDDING.** Bedding around the sanitary sewer riser shall be compacted Pipe Bedding Type 1 or 2. The bedding shall be placed and compacted from the depth of the sanitary sewer main to the top of the sanitary sewer riser pipe. Compacted Pipe Bedding Type 1 or 2 shall be required for all risers whether constructed in vertical wall or sloped wall trenches. Bedding material and construction practices shall be approved by the Construction Engineer prior to installation.
7. **SUPPORT OF RISERS.** Sanitary sewer riser pipe shall be supported during trench backfill. The riser pipe shall be held in a vertical position at all times until trench backfill and compaction has been completed. Contractor's methods for supporting and backfilling the riser pipe shall be approved by the Construction Engineer.
8. **PLUGGING.** The ends of the riser pipes and manhole stubs shall be plugged using an airtight solvent welded cap or plug. Cap or plug fittings shall be approved by the Construction Engineer prior to installation. Caps or plugs which do not provide an airtight seal will not be accepted.
9. **TOP OF THE RISER PIPE.** The top elevation of the sanitary sewer riser pipe shall be built per above elevations, unless otherwise directed by the Construction Engineer. Where riser elevations are not shown on the plans, the top of the risers shall be set at an elevation four feet below the proposed ground surface. If ground water is encountered, the top of the riser pipe shall be set at an elevation two feet (min.) above the maximum water table elevation, regardless of the riser elevation shown on the plans.
10. **MARKING.** Locations of the ends of the sanitary sewer riser pipe shall be marked by fastening green colored plastic tape to the end of the riser. The tape shall be supported by a length of wooden 2 x 4, extending from the top of the riser pipe to the proposed ground surface. The green tape shall be visible and extend one foot above the proposed ground surface. The green tape shall be 4 mil Polyethylene film with a minimum width of three inches, specifically manufactured for the purpose of identification of underground sewers.
11. **LOCATION MEASURES.** The project inspector shall record and document the location of all risers constructed as measured from the nearest manhole, indicating the direction from the manhole, the direction and distance from the main, riser size, and elevation of the top of the riser.
12. **RISER LOCATION.** The riser shall be located per plan if shown. If not shown on the plan, the riser shall be located at the center of the lot, within one foot of the property side of the easement for the lot being served. All riser locations shall be approved by the Construction Engineer prior to installation.
13. **PAYMENT.** "Sanitary sewer risers" shall be paid for at the contract unit price per each, which price shall be full compensation for all pipe, fittings, marking tape, length of wooden 2 x 4, reinforced concrete encasement, support during backfill, backfill, labor, site restoration, and any other items necessary to complete the work.
 "Manhole stubs" shall be paid for at the contract unit price per each, which shall be full compensation for all labor, material, and incidentals necessary to complete the work including all pipe, fittings, reinforced concrete encasement, and all other items as required and listed for "Sanitary Sewer Risers".



METHOD "A"



METHOD "B"



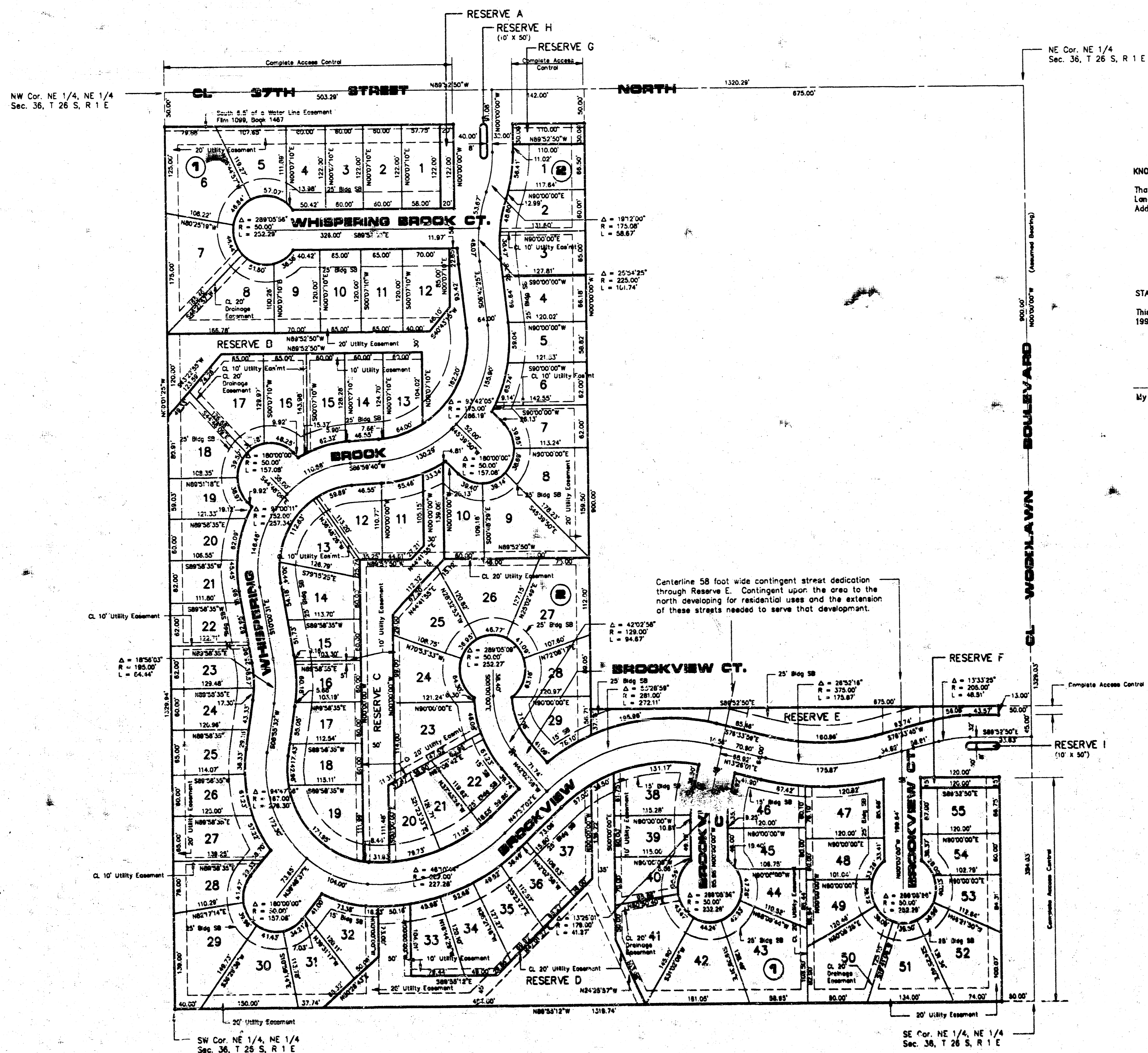
METHOD "C"

NOTE: RISER PIPE REQUIREMENTS AT MANHOLE STUBS SHALL BE SIMILAR TO THOSE SHOWN ABOVE.

| | | |
|------|---------|------|
| PLAN | CHECKED | DATE |
| | | |

| | |
|---|-------------------|
| PDE & ASSOCIATES OF KANSAS, INC. | |
| Consulting Engineers 431 N. Oliver Suite 110 Wichita KS 67208 316/685-4114 | |
| Whispering Brook | Sanitary Sewer |
| CITY OF WICHITA, KANSAS | |
| Project No. 468-82166 | Index Code 741330 |
| February 1992 | 7 of 8 |

PC 26-9



KNOW ALL MEN BY THESE PRESENTS:

That the State Bank of Colwich holder of a mortgage on the property described in the Land Surveyor's certificate does hereby consent to the plat of Whispering Brook Addition.

Chris Anderson
Chris Anderson, Vice President

STATE OF KANSAS, COUNTY OF SEDGWICK: ss.

This instrument was acknowledged before me on this 2nd day of Jan 1992, by Chris Anderson, Vice President of the State Bank of Colwich.

7-21-92
My appointment expires:



Patricia M. Kraus
Notary Public

STATE OF KANSAS, COUNTY OF SEDGWICK: ss.

I, Kenny E. Hill, being a duly licensed Land Surveyor in said County and State, do hereby certify that I have been in responsible charge of surveying and plating "WHISPERING BROOK ADDITION" to Wichita, Kansas, being described as follows:

The North Half of the East Half of the Northeast Quarter of Section 36, Township 26 South, Range 1 East of the 6th P.M. Sedgwick County, Kansas, except for the North 900.00 feet of the East 675.00 feet thereof, subject to street right-of-way.

The accompanying plat is a true and correct exhibit of property surveyed.

Dated this 28th day of October, 1991.

Kenny E. Hill
Kenny E. Hill, L.S.



KNOW ALL MEN BY THESE PRESENTS:

That we, the undersigned, have caused the land described in the Surveyor's Certificate to be platted into lots, blocks, streets and reserves. The streets are hereby dedicated to and for the use of the public. A contingent street dedication is hereby granted as indicated. The street dedication is contingent upon the area north of Reserve E developing for residential uses and the extension of these streets across Reserve E being needed to serve that development. Easements are hereby granted as indicated for the construction and maintenance of drainage and utilities. Reserves B, C, D, and E are reserved to permit drainage, drainage structures, ponds, landscaping, sidewalks, gazebos, recreation facilities, utilities confined to easements and utility service connections. Reserves A, F, G, H, and I are reserved to permit landscaping, entry monuments, irrigation, sidewalks and utilities confined to easements. The Reserves are to be owned and maintained by a property owners association consisting of all of the owners of property in this addition. All egress rights of access to or from 37th Street North or to or from Woodlawn Boulevard over and across the North line of Block 1, the North line of Reserve A and the North line of Reserve G or the East line of Block 1 and the East line of Reserve E are hereby granted to the appropriate governing body.

Greystone Construction, Inc.

Randy Dean
Randy Dean, President

STATE OF KANSAS, COUNTY OF SEDGWICK: ss.

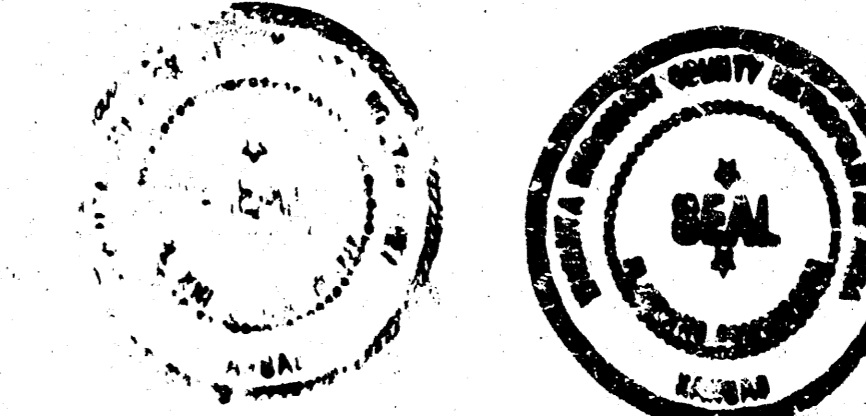
This instrument was acknowledged before me on this 4th day of November, 1991, by Randy Dean, President of Greystone Construction, Inc.

My appointment expires: May 25, 1994

Joni C. Legge
Joni C. Legge, Notary Public

This plot of WHISPERING BROOK ADDITION to Wichita, Sedgwick County, Kansas has been submitted to and approved by the WICHITA-SEDGWICK COUNTY METROPOLITAN AREA PLANNING COMMISSION, Wichita, Kansas.

Dated this 24th day of October, 1991.



Marvin S. Krout
Marvin S. Krout, Secretary

This plat approved and all dedications shown herein accepted by the City Council of the City of Wichita, Kansas, this 21 day of October, 1991.

Pat Burnett
Pat Burnett, Deputy City Clerk

Entered on transfer record this 4 day of February, 1992.

#1186003

John Wright
John Wright, County Clerk

This is to certify that this instrument was filed for record in the Register of Deeds Office at Wichita, Kansas on the 21st day of FEBRUARY, 1992.

Pat Kettler
Pat Kettler, Register of Deeds

WHISPERING BROOK ADDITION

TO WICHITA, SEDGWICK COUNTY, KANSAS

| | |
|---|-------------------------|
| POE & ASSOCIATES OF KANSAS, INC. | |
| Consulting Engineers 434 N. Oliver Suite 110 Wichita KS 67208 316/695-4114 | |
| ENGINEER: K. Hill | Whispering Brook |
| DATE: 10/28/91 | Sanitary Sewer |
| CAD: T. Brooks | CITY OF WICHITA, KANSAS |
| DATE: February 1993 | Project No. 468-82106 |
| 8 of 8 | Index Code 741330 |

PC 26-9

10-10-91-18