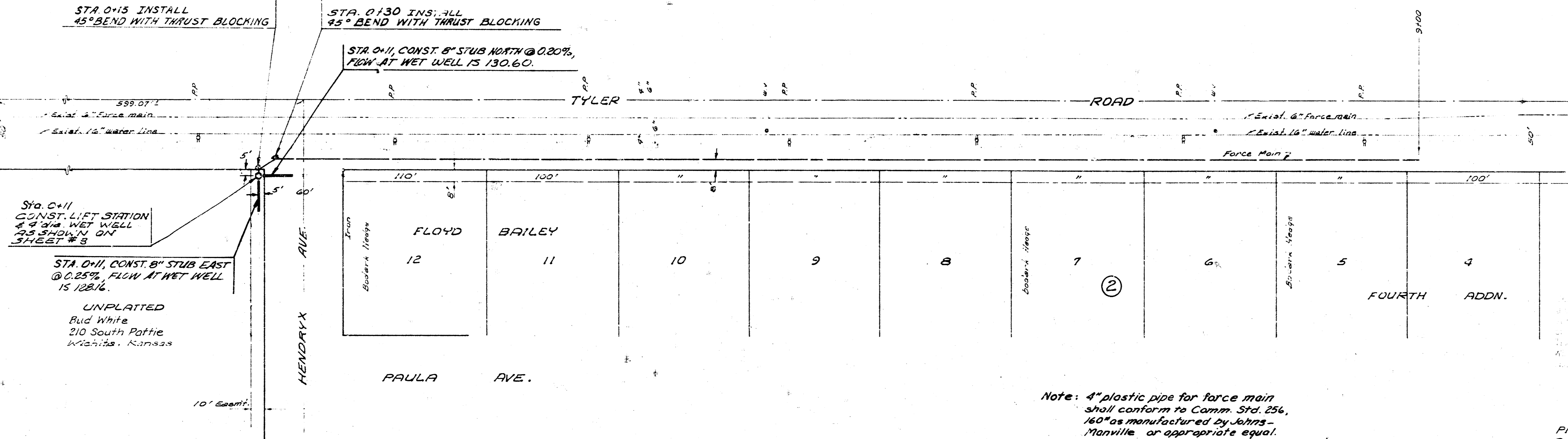


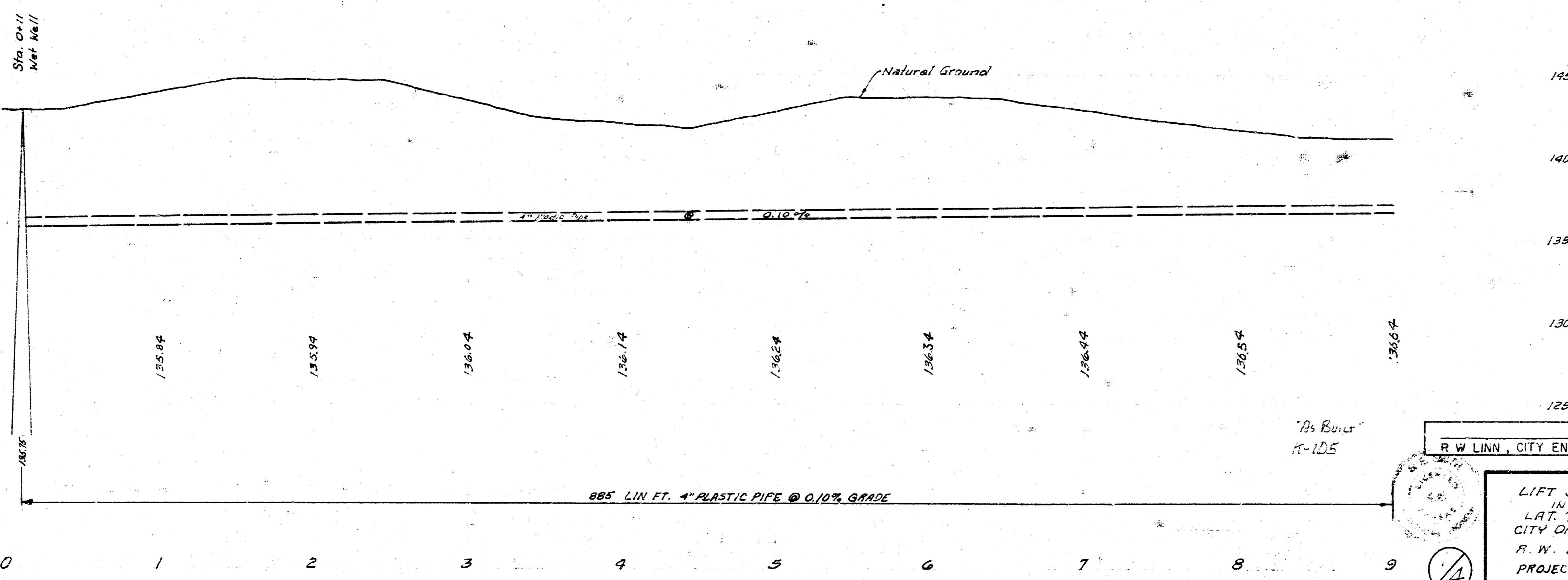
General Note: Contractor shall install a wet well mounted lift station, lift station to be furnished by others, as shown by plans. Lump sum bid price for installation of lift station shall include all costs for material and labor to complete the work in place including wet well manhole, 8" clay pipe stubs in wet well, electrical wiring, concrete walk, electrical conduit, electrical fused disconnect switch, power service pole, guy wire, sand backfill, finishing, compacted earth backfill, suction lines, cast iron discharge line to beginning of P.C.C. force main, thrust blocking, and any other necessary labor or material to complete the installation ready for operation. Four inch P.C.C. force main to be paid for at the price bid per linear foot and such price shall include all costs for material and labor to complete the item including all earth and sand backfill, finishing, fittings, thrust blocking, connection of force main to curtail manhole, and any other incidental material or labor to complete the work.



B.M. 143.53 "Sta" 34.2' E. of 27.2' S. of E. Both Tyler & Maple
 B.M. 144.44 N.W. Cor. Conc. Base. Tension Station S.E. Cor. Tyler & Maple
 B.M. 143.20 R.R. Spike S.E. Side P.R. N.W. Cor. Tyler & Bellevue

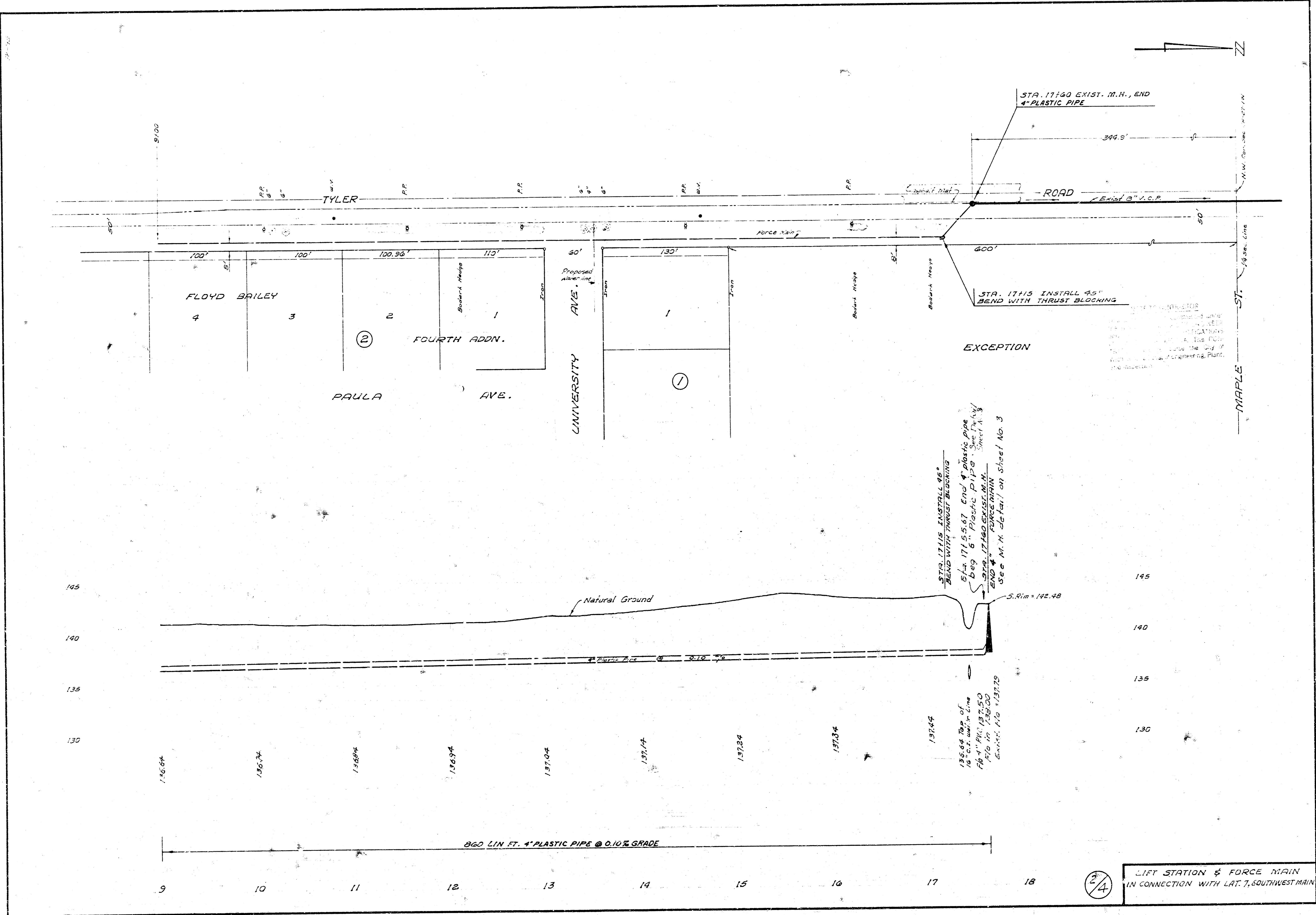
Note: 4" plastic pipe for force main shall conform to Comm. Std. 256, 160" as manufactured by Johns-Manville or appropriate equal.

Plan Scale 1" = 40'
 Profile Scale 1" = 40' Vert.



JUNE 10, 1968
 R. W. LINN, CITY ENGINEER

LIFT STATION & FORCE MAIN IN CONNECTION WITH LAT. 7, SOUTHWEST MAIN CITY OF WICHITA, KANSAS
 R. W. LINN, CITY ENGINEER
 PROJECT NO. AAKB 502015
 DATE: AUG. 1972



STA. 17140 EXIST. M.H., END 4" PLASTIC PIPE

ROAD

STA. 17115 INSTALL 95" BEND WITH THRUST BLOCKING

EXCEPTION

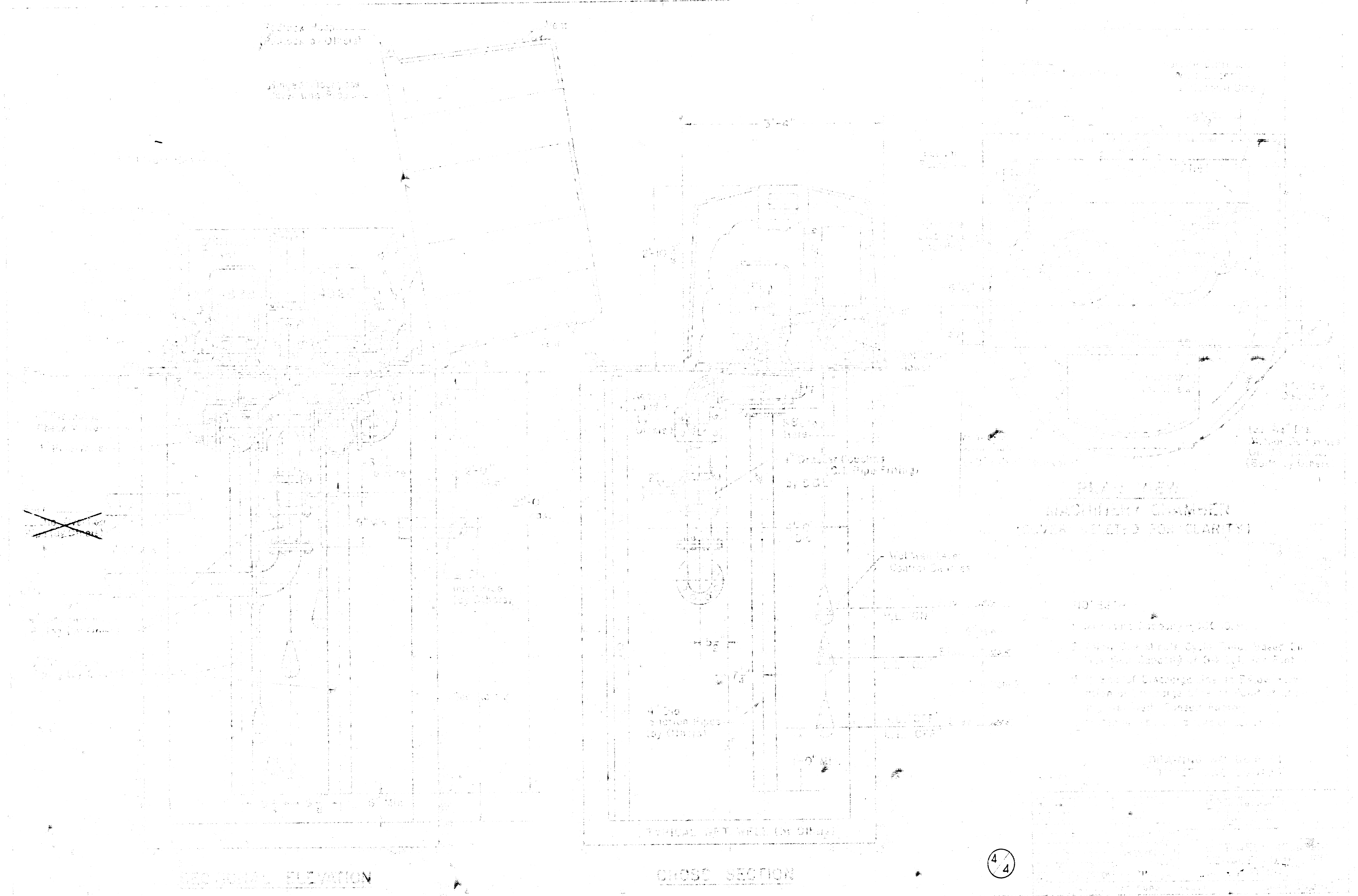
STA. 17115 INSTALL 95" BEND WITH THRUST BLOCKING
 Sta. 17155.47 End 4" Plastic pipe
 beg 6" Plastic pipe
 Sta. 17160 EXIST. M.H.
 END 4" FORCE MAIN
 See M.H. elev. on sheet No. 3

S. Rim = 142.48

136.64 Top of 18" cr. w. m. line
 14" 4" P.I. 137.50
 15" 4" P.I. 138.00
 Elev. 1/2 = 137.25

860 LIN. FT. 4" PLASTIC PIPE @ 0.10% GRADE

24
 LIFT STATION & FORCE MAIN
 IN CONNECTION WITH LAT. 7, SOUTHWEST MAIN



PERSPECTIVE ELEVATION

CROSS SECTION