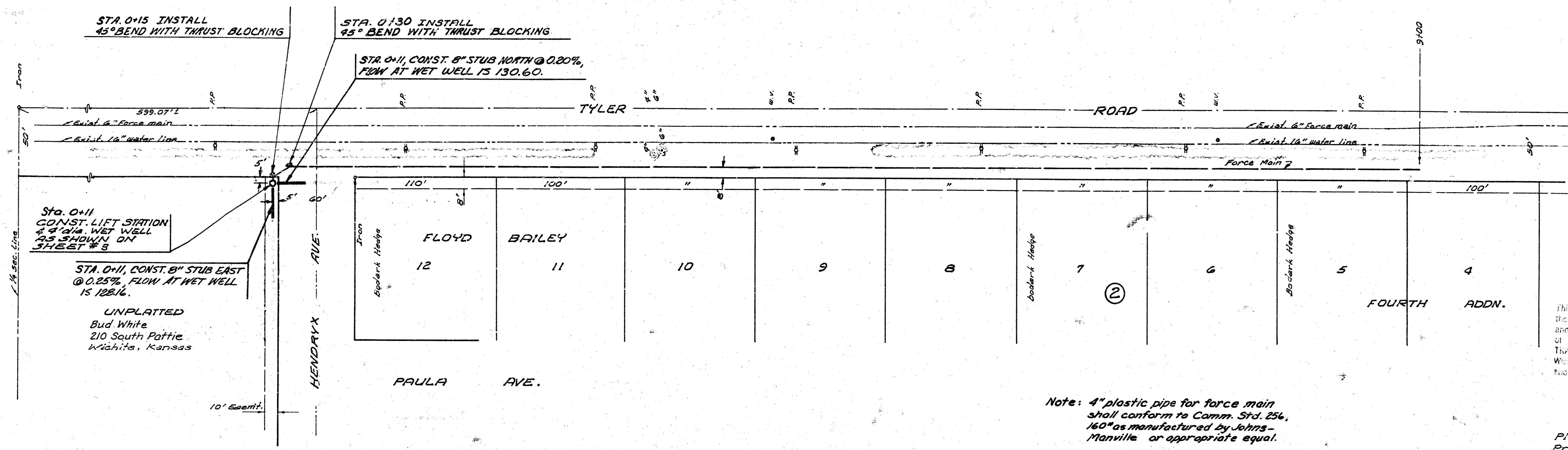
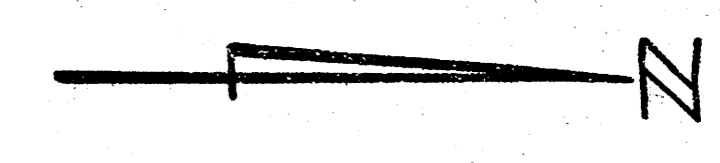


P. Riggs
D. Chramer
R-95

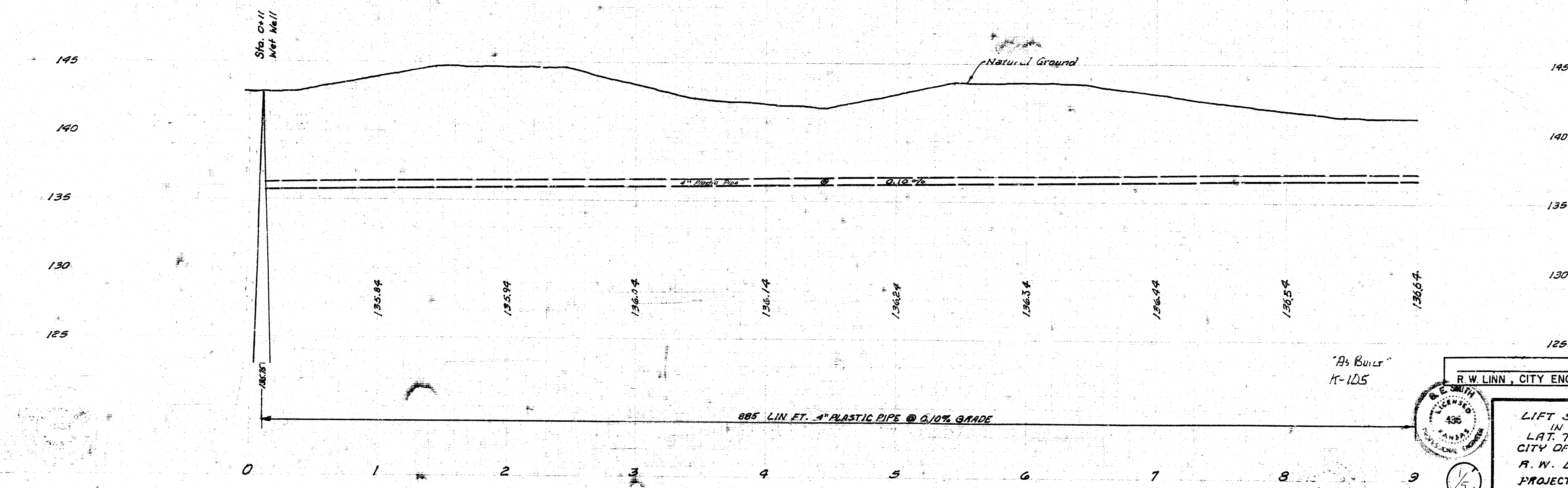
General Note: Contractor shall install a wet well mounted lift station, lift station to be furnished by others, as shown by plans. Lump sum bid price for installation of lift station shall include all costs for material and labor to complete the work in place including wet well manhole, 8" clay pipe stubs in wet well, electrical wiring, concrete walk, electrical conduit, electrical fused disconnect switch, power service pole, guy wire, sand backfill, flashing, compacted earth backfill, suction lines, cast iron discharge line to beginning of P.V.C. force main, thrust blocking, and any other necessary labor or material to complete the installation ready for operation. Four inch P.V.C. force main to be paid for at the price bid per lineal foot and such price shall include all costs for material and labor to complete the item including all earth and sand backfill, flashing, fittings, thrust blocking, connection of force main to outfall manhole, and any other incidental material or labor to complete the work.



NOTE TO CONTRACTOR
This project will be constructed under the direction of the CITY ENGINEER and shall conform to the SPECIFICATIONS of the CITY OF WICHITA. The CONTRACTOR will reimburse the City of Wichita for all cost of Engineering, Plans, and Inspection.

B.M. 143.53 "Sta" 34.2' E. & 27.2' S. of & Both Tyler & Maple
B.M. 144.44 N.W. Cor. Conc. Base Texaco Sign S.E. Cor. Tyler & Maple
B.M. 143.20 R.R. Spike S.E. Side P.P. N.W. Cor. Tyler & Bellview

Plan Scale 1" = 40'
Profile Scale 1" = 40' Hor.
1" = 4' Vert.



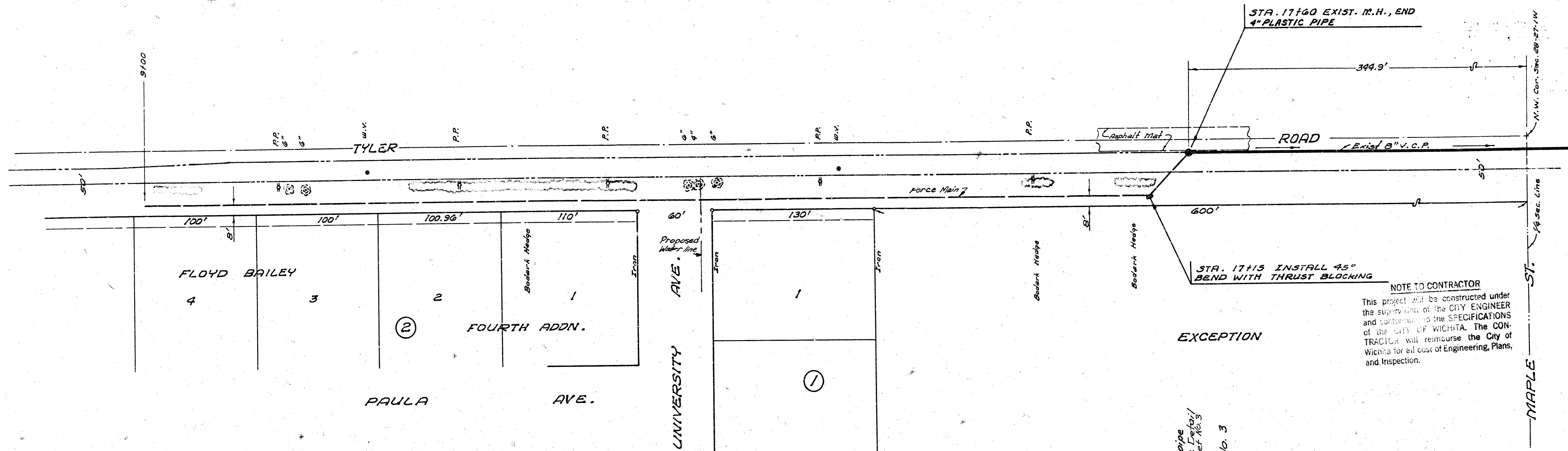
As Built
11-10-5

JUNE 10, 1968
R. W. LINN, CITY ENGINEER



LIFT STATION & FORCE MAIN
IN CONNECTION WITH
LAT. 7, SOUTHWEST MAIN
CITY OF WICHITA, KANSAS
R. W. LINN, CITY ENGINEER
PROJECT NO. R.A.M.B. 502015
DATE: AUG. 1972

R-95

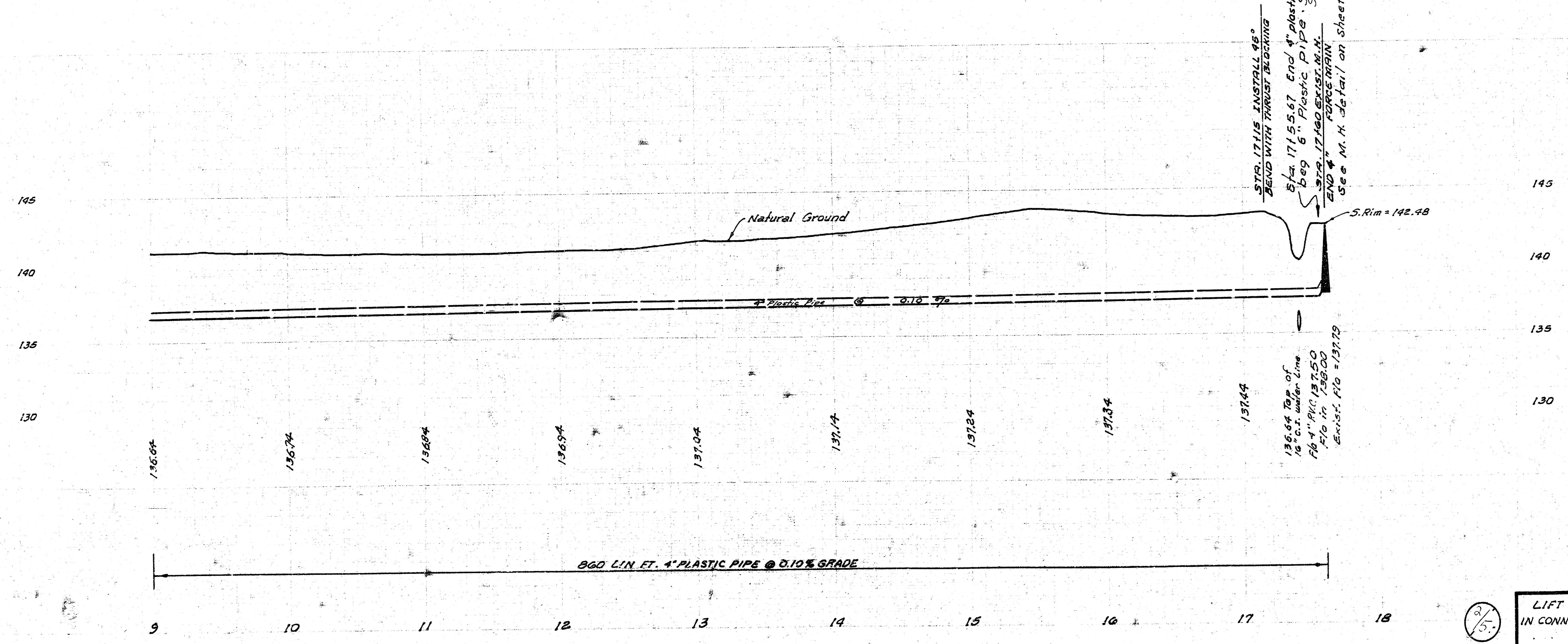


STA. 17160 EXIST. M.H., END
4" PLASTIC PIPE

STA. 17115 INSTALL 45°
BEND WITH THRUST BLOCKING

NOTE TO CONTRACTOR
 This project will be constructed under the supervision of the CITY ENGINEER and conform to the SPECIFICATIONS of the CITY OF WICHITA. The CONTRACTOR will reimburse the City of Wichita for all cost of Engineering, Plans, and Inspection.

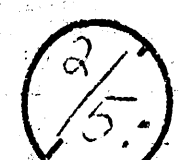
EXCEPTION

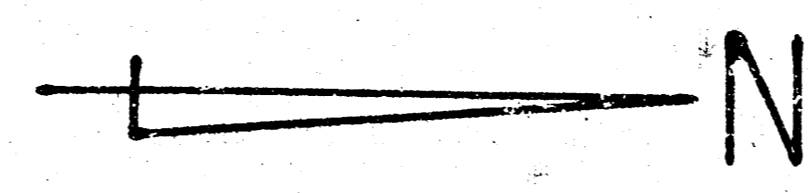


STA. 17115 INSTALL 45°
 BEND WITH THRUST BLOCKING
 5' x 1715.67 End 4" plastic pipe
 bag 6" Plastic Pipe. See Detail Sheet No. 3
 STA. 17160 EXIST. M.H.
 END 4" FORCE MAIN
 See M.H. Detail on Sheet No. 3

136.64 Top of
 16" o.d. water line
 16" 4" P.C. 137.50
 170 in 138.00
 Exist. F10 = 137.29

860 LIN. FT. 4" PLASTIC PIPE @ 0.10% GRADE

 LIFT STATION & FORCE MAIN
 IN CONNECTION WITH LAT. 7, SOUTHWEST MAIN



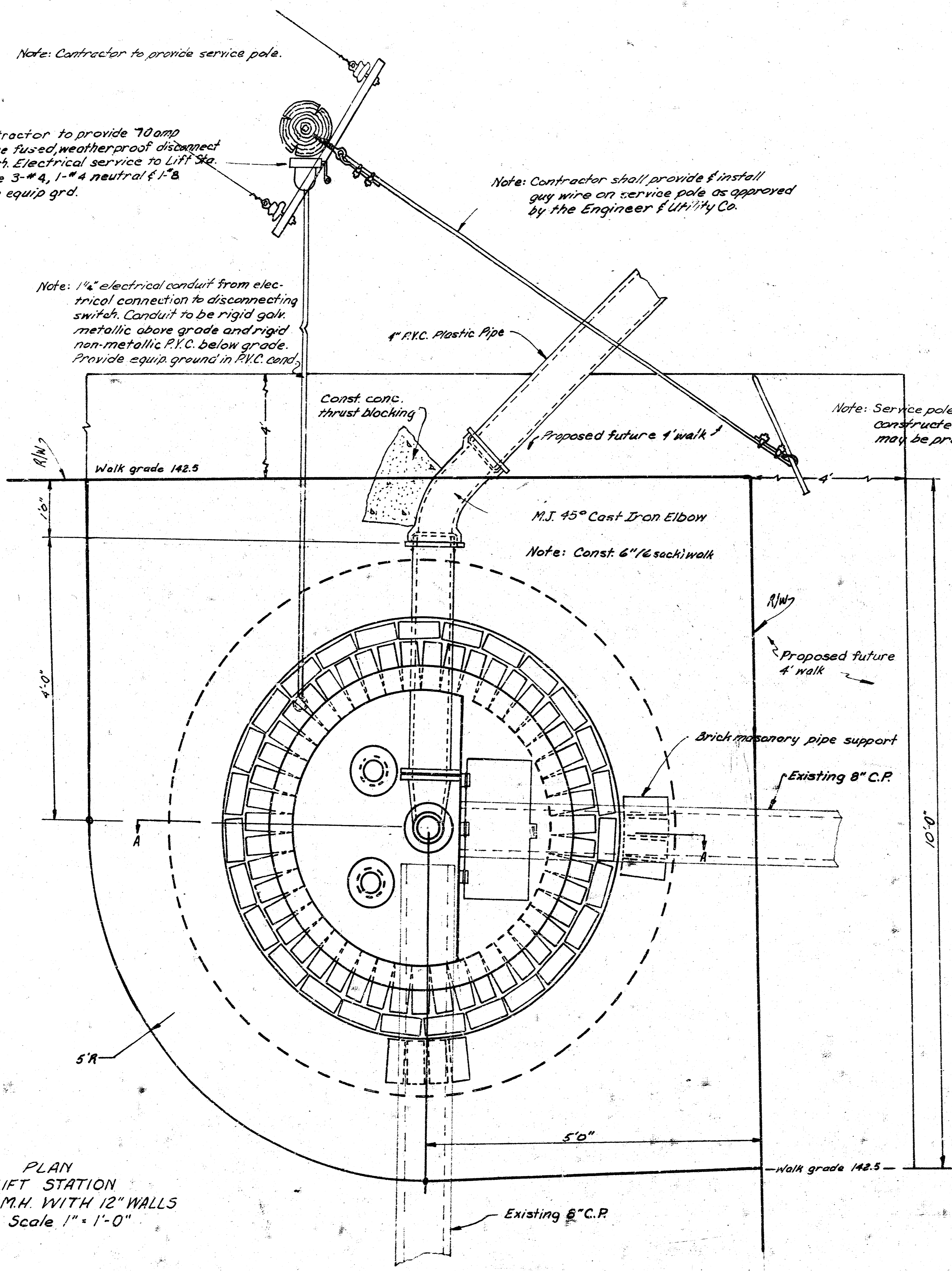
Note: Contractor to provide service pole.

Note: Contractor to provide 70 amp 4 wire fused, weatherproof disconnect switch. Electrical service to lift station to be 3-#4, 1-#4 neutral & 1-#8 bare equip. grd.

Note: Contractor shall provide & install guy wire on service pole as approved by the Engineer & Utility Co.

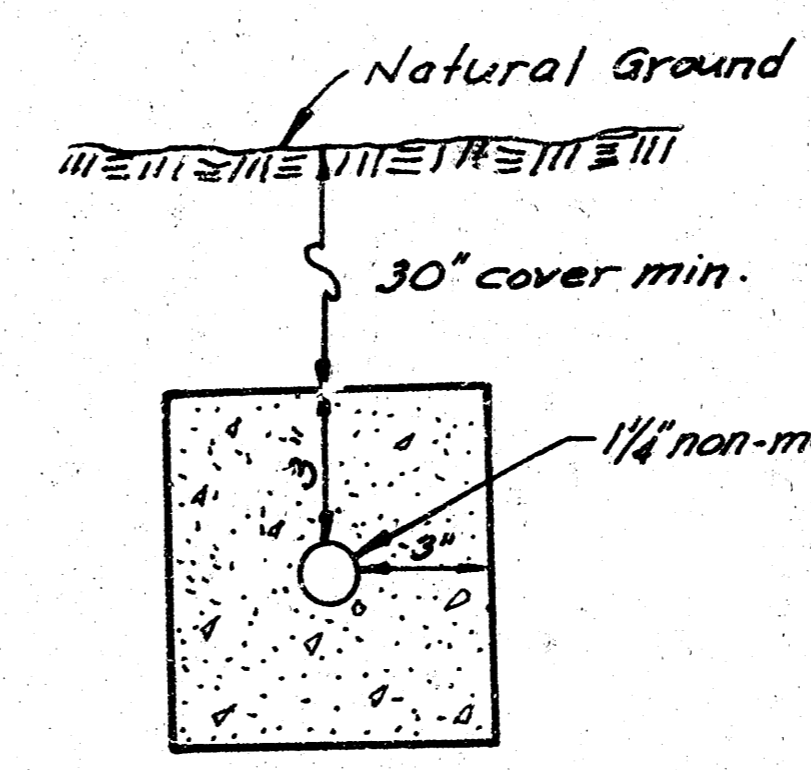
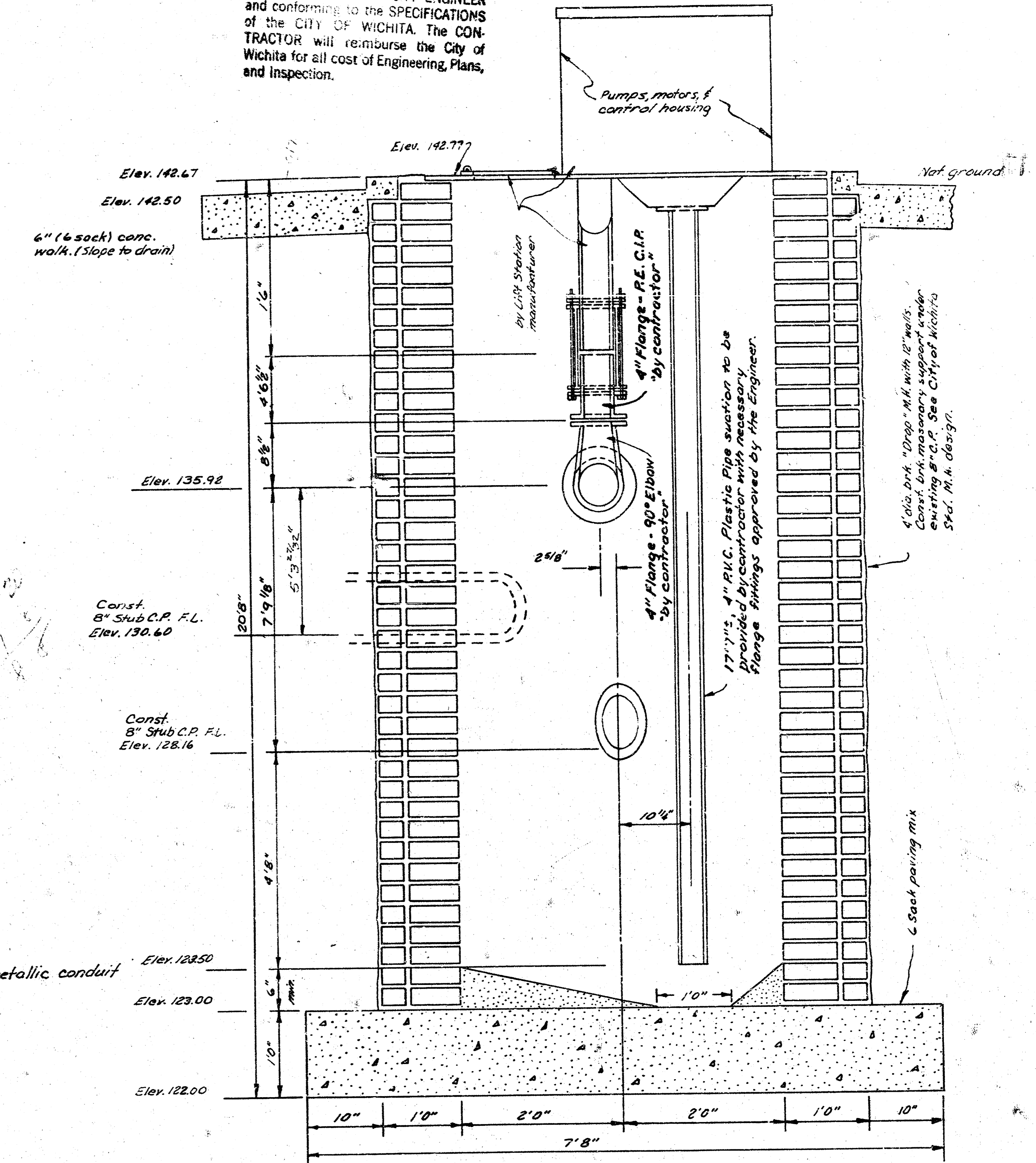
Note: 1/2" electrical conduit from electrical connection to disconnecting switch. Conduit to be rigid galv. metallic above grade and rigid non-metallic P.V.C. below grade. Provide equip. ground in P.V.C. cond.

Note: Service pole guy wire shall be constructed such that a 4' sidewalk may be provided in the future.

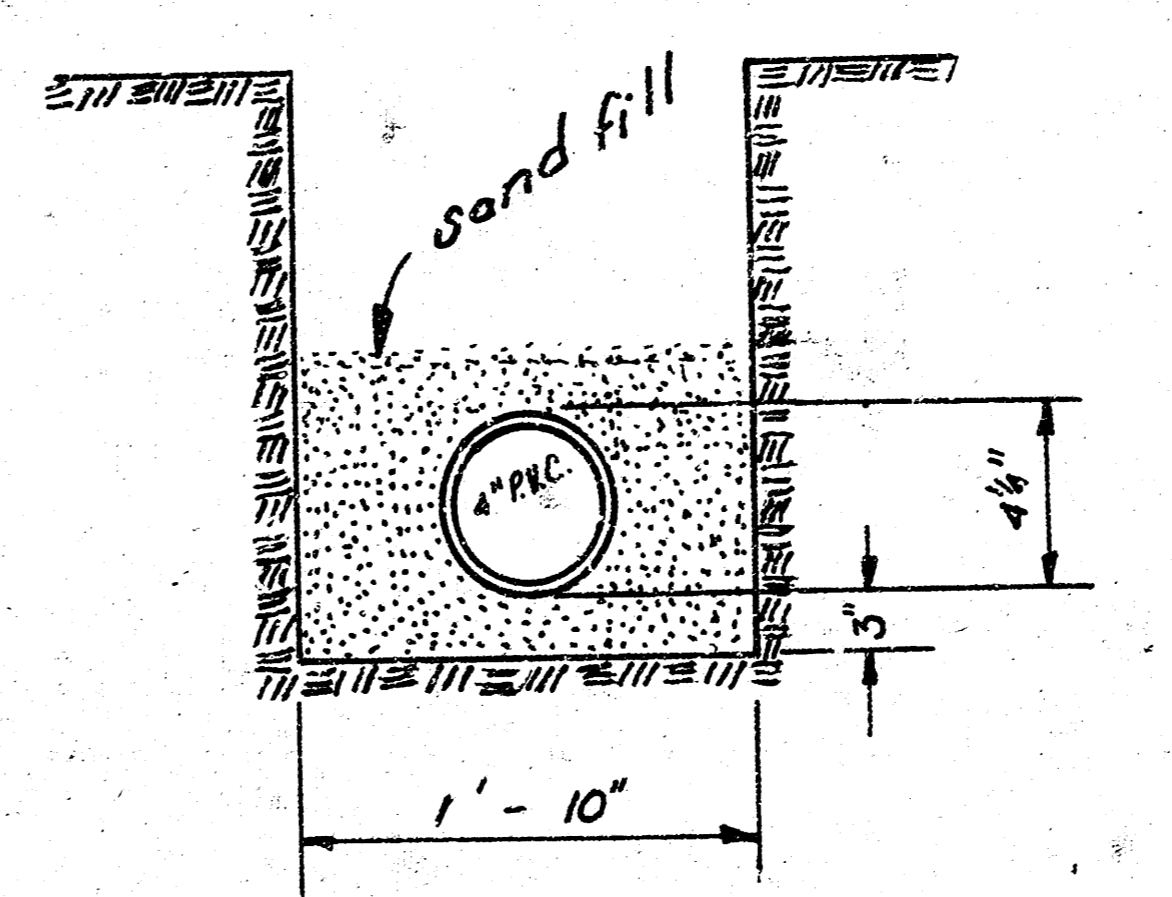


PLAN
LIFT STATION
4' DIA. M.H. WITH 12" WALLS
Scale 1" = 1'-0"

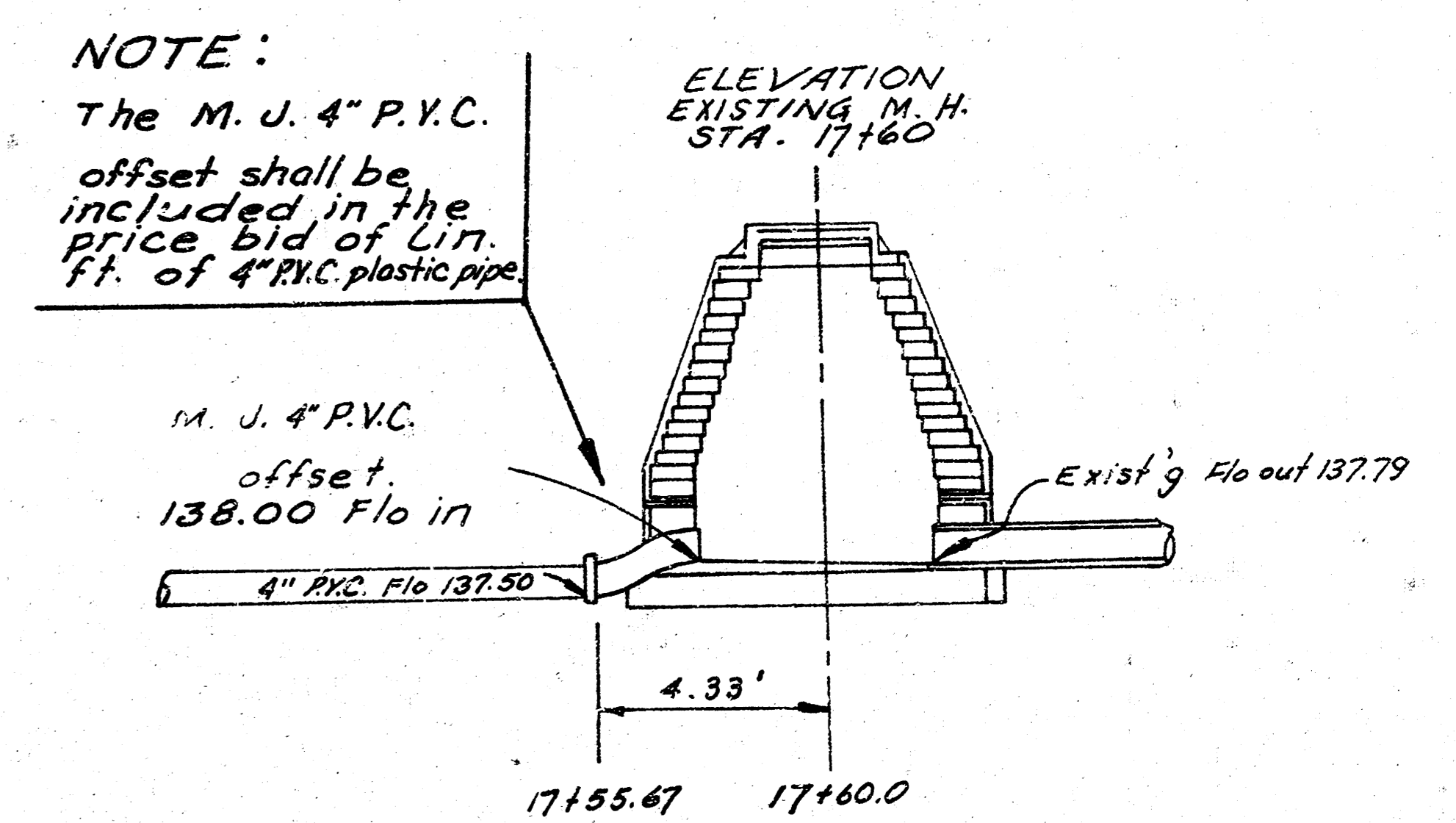
NOTE TO CONTRACTOR
This project will be constructed under the supervision of the CITY ENGINEER and conforming to the SPECIFICATIONS of the CITY OF WICHITA. The CONTRACTOR will reimburse the City of Wichita for all cost of Engineering, Plans, and Inspection.



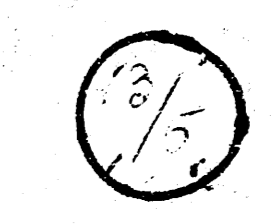
SECTION
ELECTRICAL CONDUIT
CONCRETE ENCASED
Scale 2" = 1'-0"



TYPICAL TRENCH SECTION

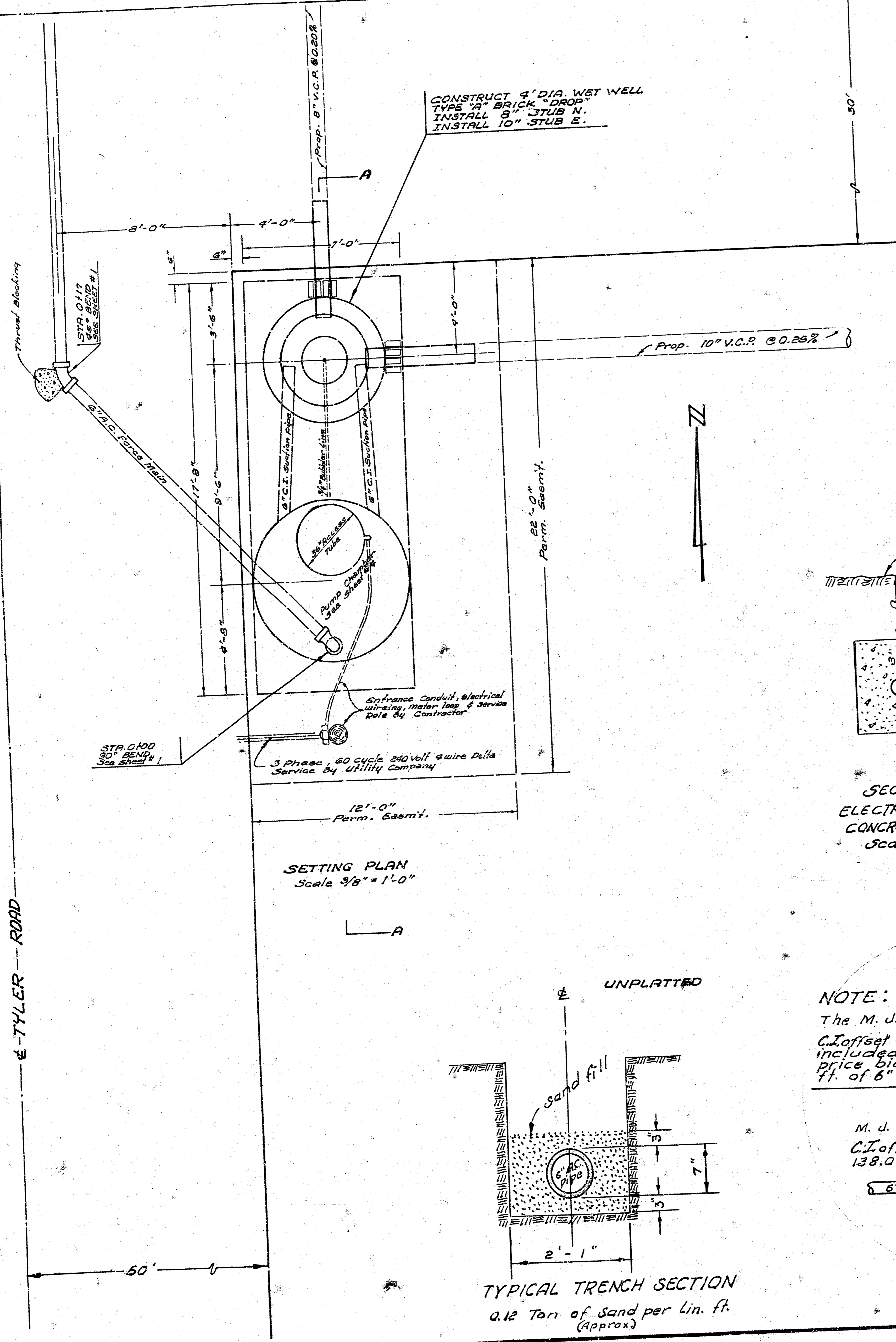


NOTE:
The M. J. 4" P.V.C. offset shall be included in the price bid of 111 ft. of 4" P.V.C. plastic pipe.



LIFT STATION in connection with
Lat. 7 S.W. Main
Date

TOURMALINE - AVE.

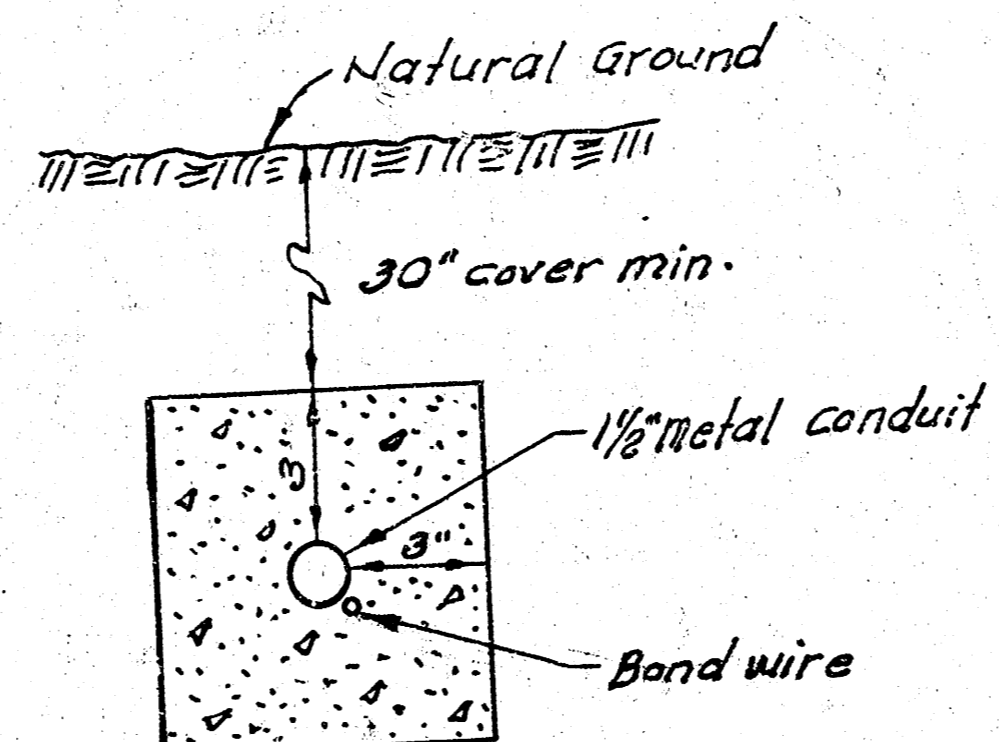
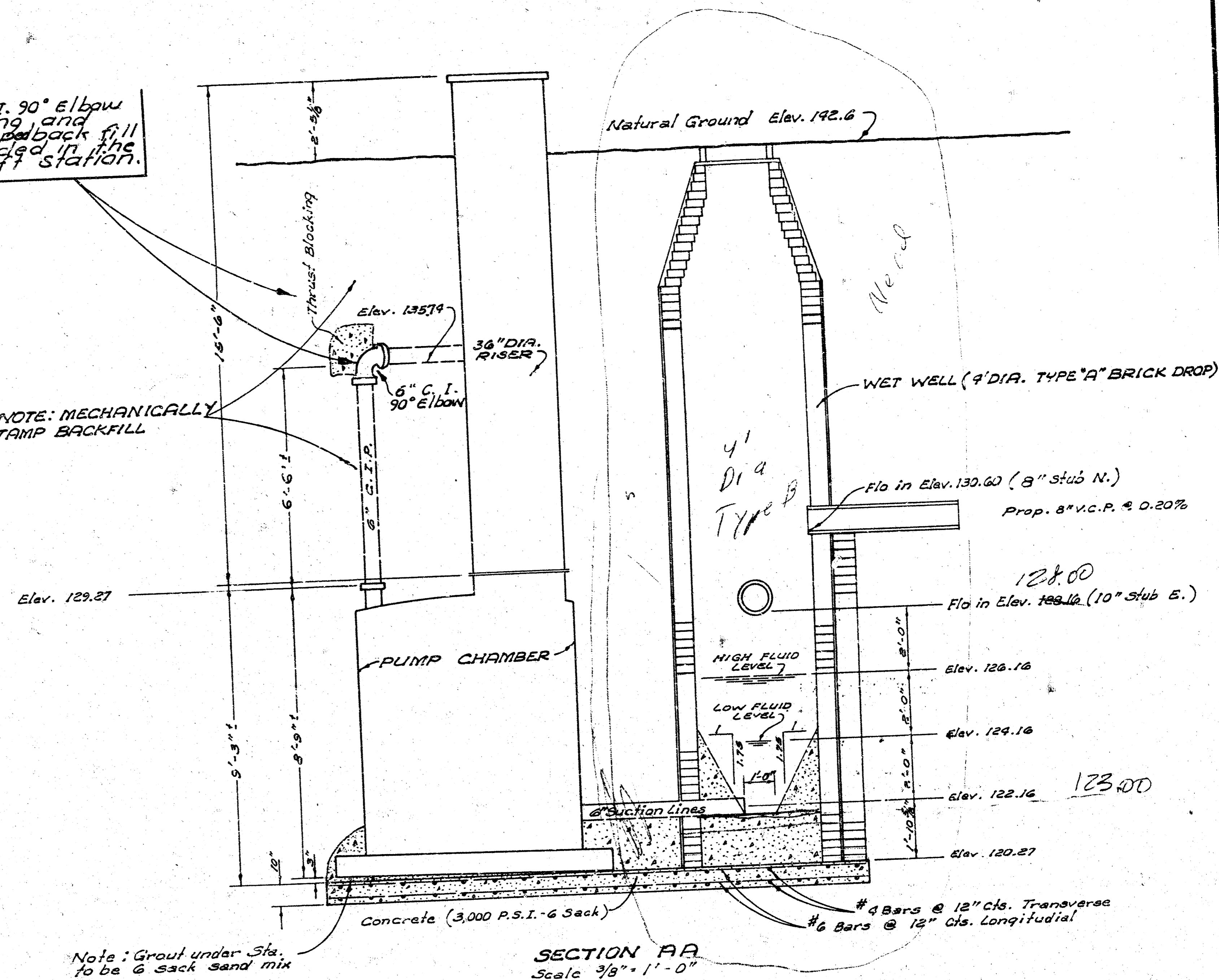


CONSTRUCT 4' DIA WET WELL TYPE "A" BRICK "DROP" INSTALL 8" STUB N. INSTALL 10" STUB E.

NOTE:

6" C.I. pipe, 6" C.I. 90° Elbow and thrust blocking and mechanically tamped back fill are to be included in the bid price of Lift station.

NOTE: MECHANICALLY TAMP BACKFILL



SECTION ELECTRICAL CONDUIT CONCRETE ENCASED Scale 2" = 1'-0"

GENERAL NOTES

- #1 6" A.C. Elbows & thrust blocking shall be included in bid price of Lin. ft. of A.C. Pipe.
- #2 Wet well conc. pad, conc. encasement of conduit, electrical wiring from Lift Sta. to service pole including Meter, 190P-4 Service Pole shall be included in lump sum of bid of Lift Station.
- #3 Electrical conduit shall have a 3" x 3" concrete encasement with a band wire parallel to the conduit pipe as shown in Plan.
- #4 Sand fill used for the 6" A.C. pipe shall be included in the bid price of Lin. ft. of 6" A.C. pipe.
- #5 The 6" C.I. Suction pipes from Wet well to pump shall be included in the bid price of Lift Station.

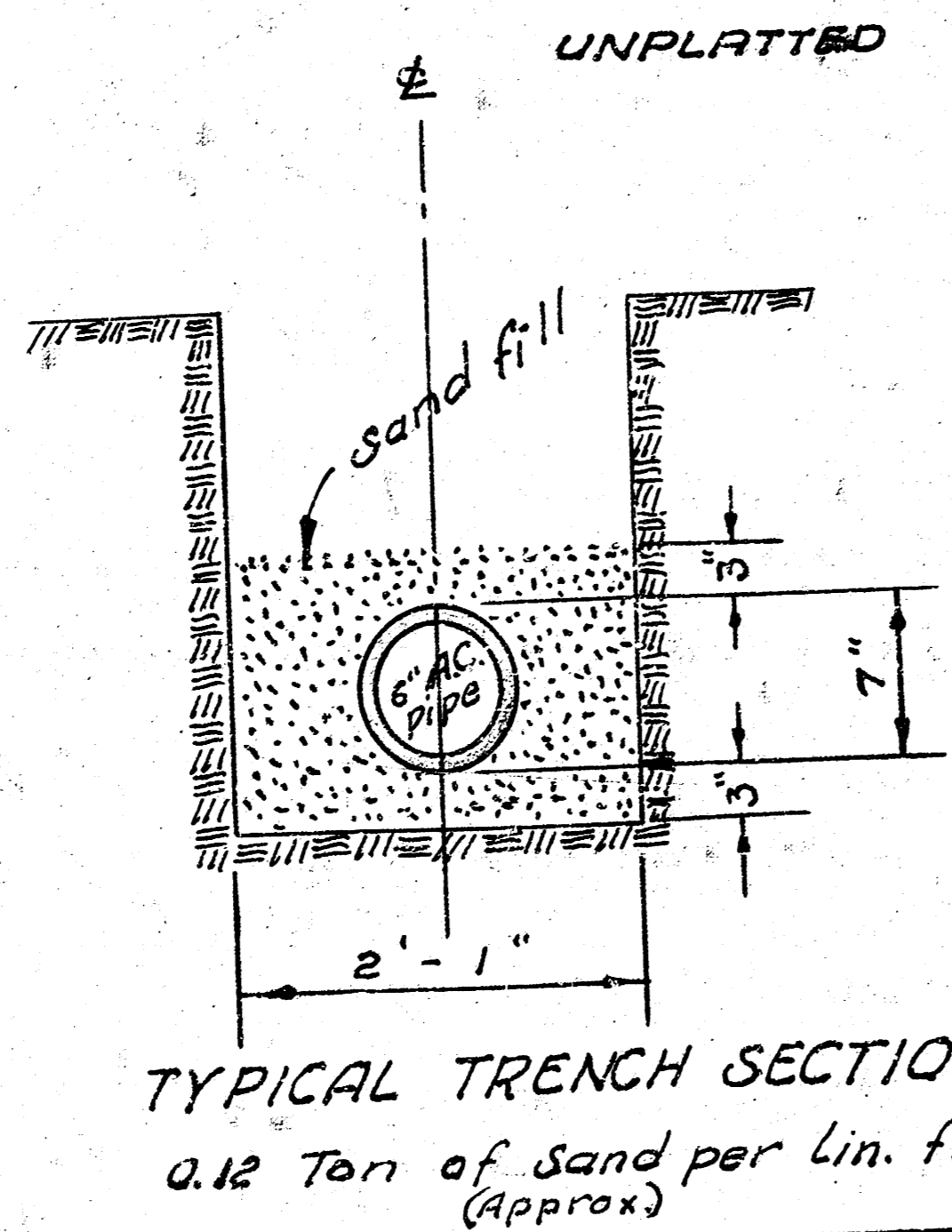
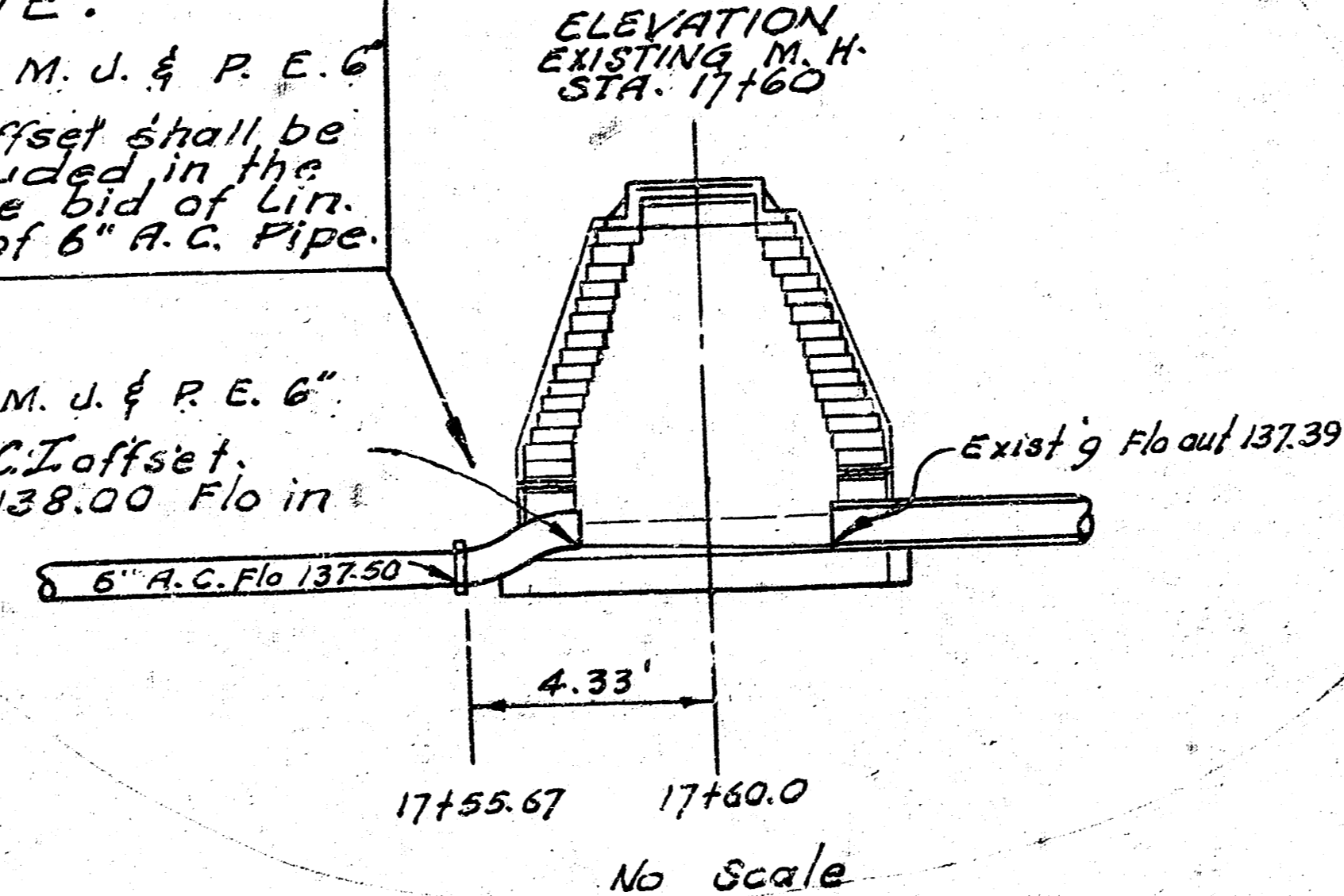
NOTE TO CONTRACTOR

This project will be constructed under the supervision of the CITY ENGINEER and conforming to the SPECIFICATIONS of the CITY OF WICHITA. The CONTRACTOR will reimburse the City of Wichita for all cost of Engineering, Plans, and Inspection.

NOTE:

The M. J. & P. E. G. C.I. offset shall be included in the price bid of Lin. ft. of 6" A.C. Pipe.

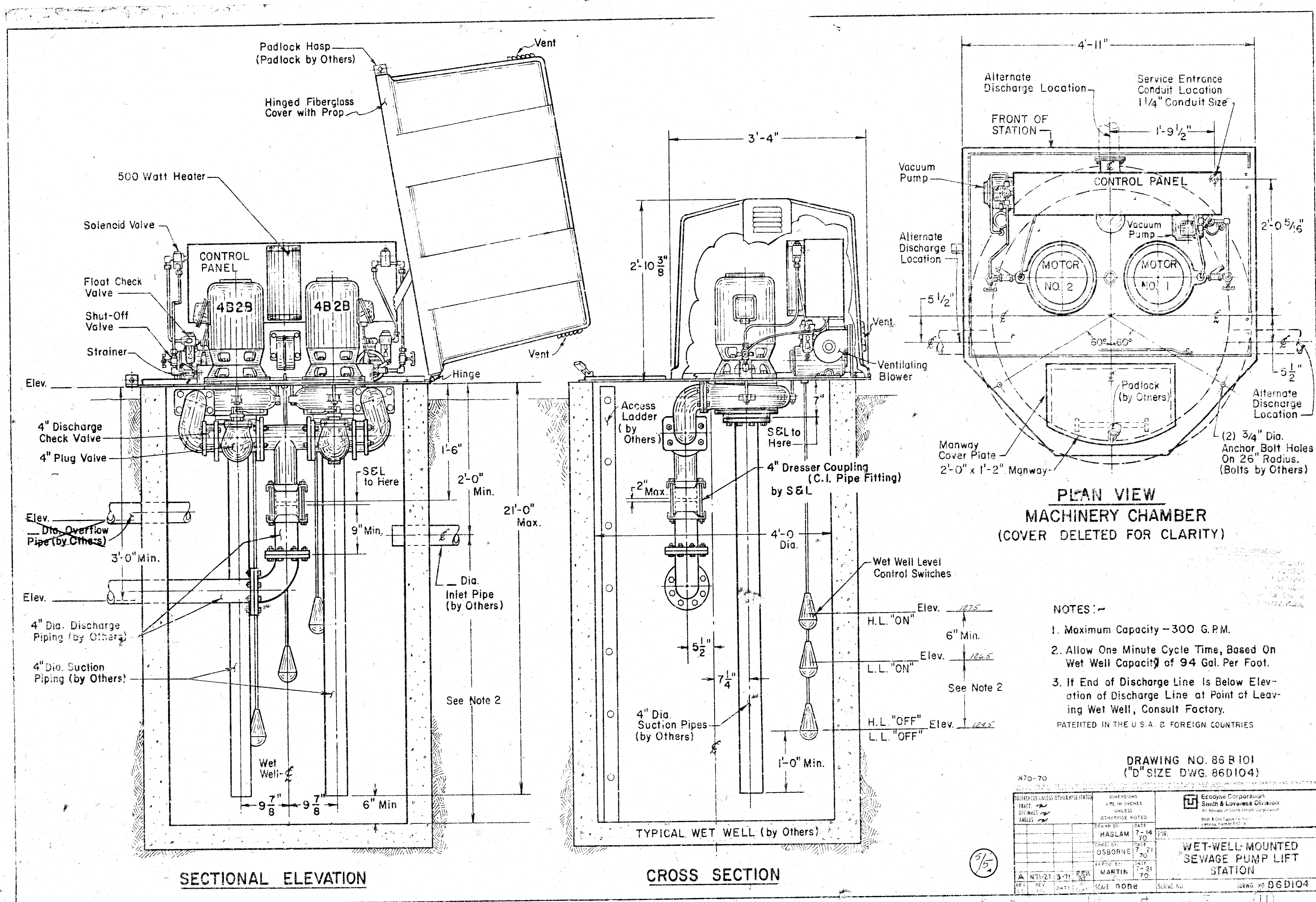
M. J. & P. E. G. C.I. offset 138.00 Flo in



TYPICAL TRENCH SECTION 0.12 Ton of Sand per Lin. ft. (Approx)

LIFT STATION & FORCE MAIN IN CONNECTION WITH LAT. 7, SOUTHWEST MAIN PRIVATE PROJECT

FILMED FROM THE BEST



**PLAN VIEW
MACHINERY CHAMBER
(COVER DELETED FOR CLARITY)**

- NOTES:-
1. Maximum Capacity - 300 G.P.M.
 2. Allow One Minute Cycle Time, Based On Wet Well Capacity of 94 Gal. Per Foot.
 3. If End of Discharge Line Is Below Elevation of Discharge Line at Point of Leaving Wet Well, Consult Factory.
- PATENTED IN THE U.S.A. & FOREIGN COUNTRIES

DRAWING NO. 86 R 101
("D" SIZE DWG. 86D104)

TOLERANCES UNLESS OTHERWISE STATED		DIMENSIONS ARE IN INCHES UNLESS OTHERWISE NOTED		Ecosyne Corporation Smith & Lovvick Division An Affiliate of Trane Inc. Corporation Box 400, Fargo, N.D. 58103	
FRACT.	1/16"	DRAWN BY	DATE	CHKD. BY	DATE
DECIMALS	1/32"	HASLAM	7-14-70	OSBORNE	7-21-70
ANGLES	1/16°	APPROV. BY	DATE	MARTIN	7-21-70
SCALE none		SERIAL NO.		DWG. NO. 86D104	

FILMED FROM THE BEST AVAILABLE COPY