

# ALL SAINTS PARISH

WICHITA , KANSAS

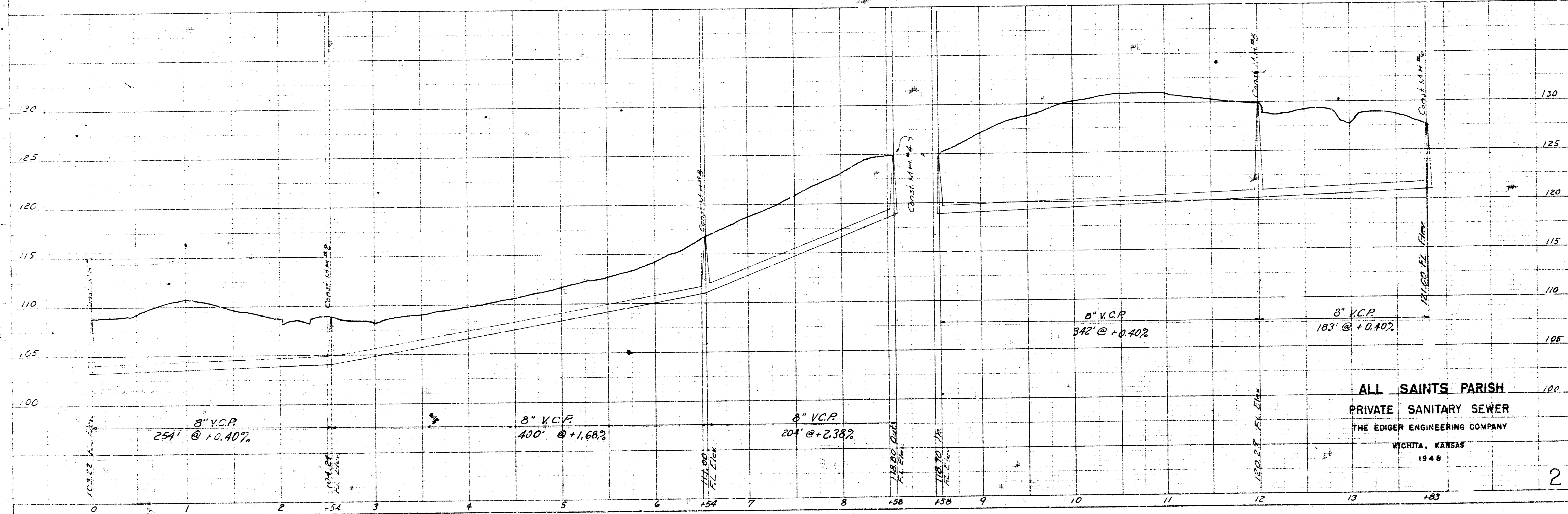
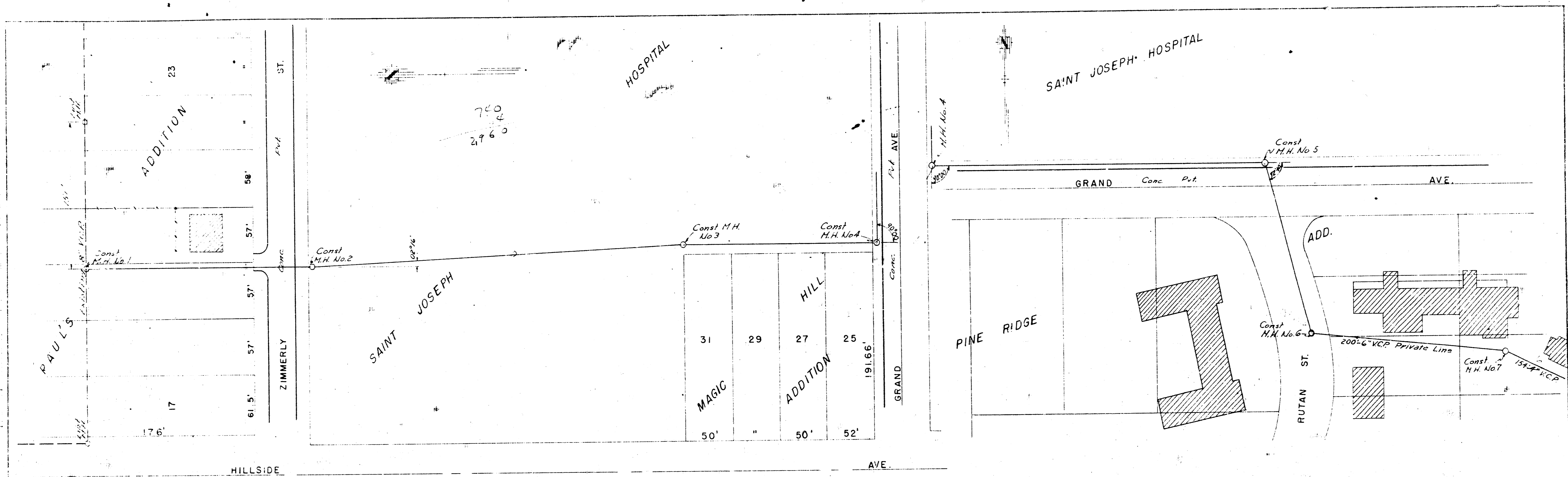
SANITARY SEWER

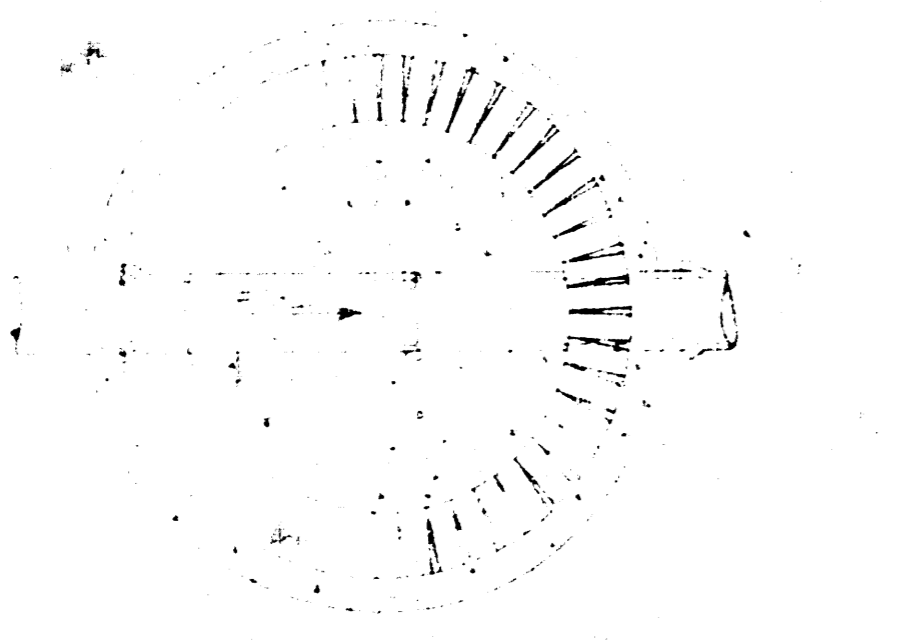
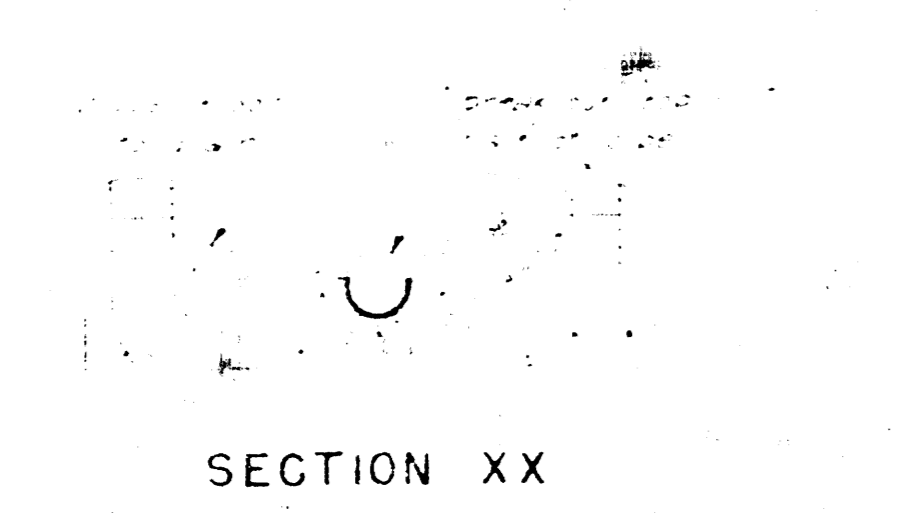
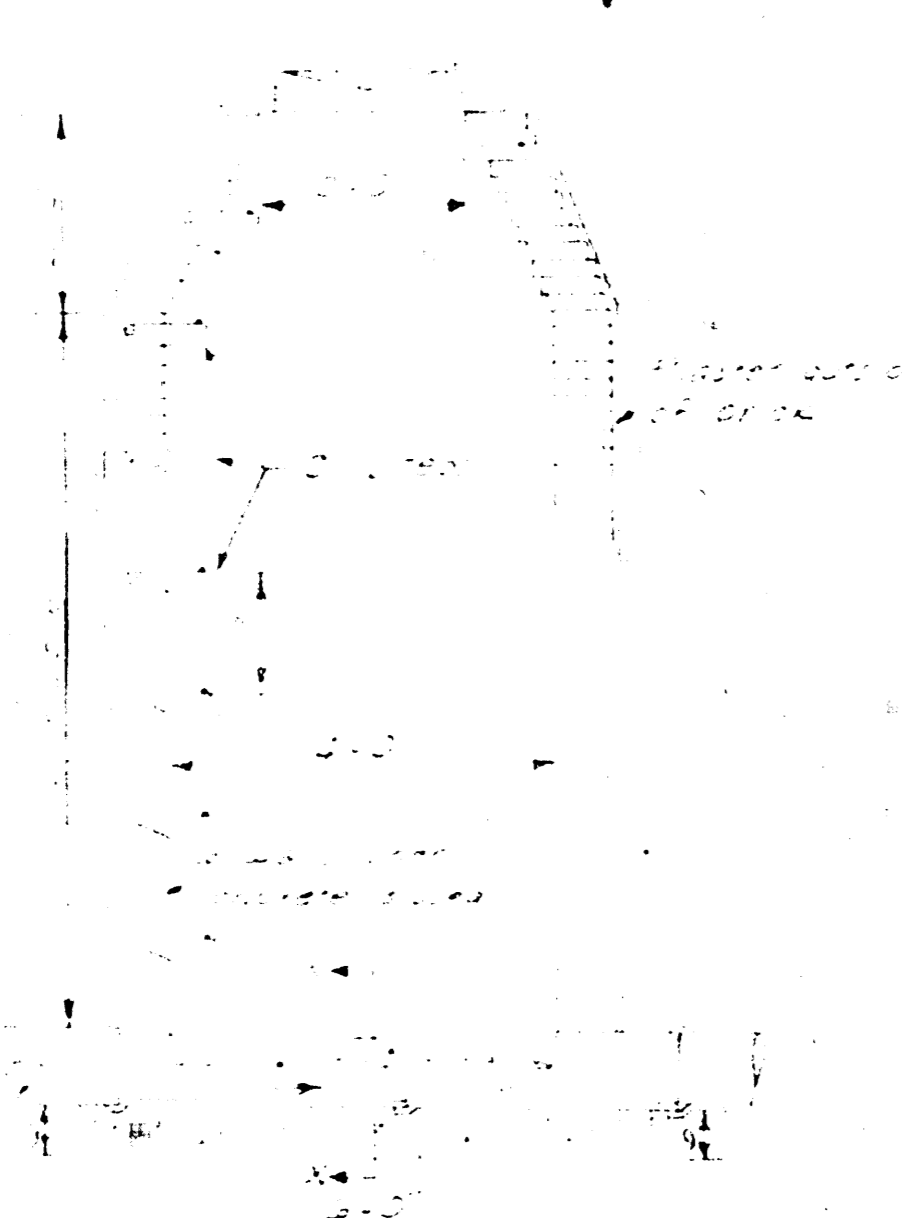
1948

THE EDIGER ENGINEERING COMPANY  
WICHITA, KANSAS

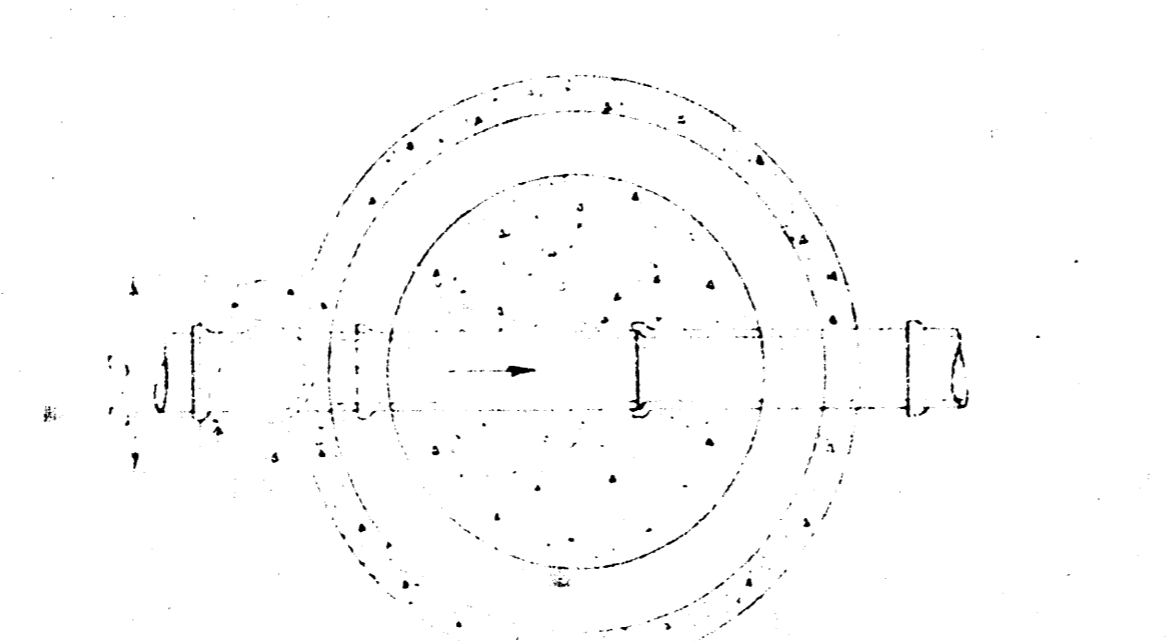
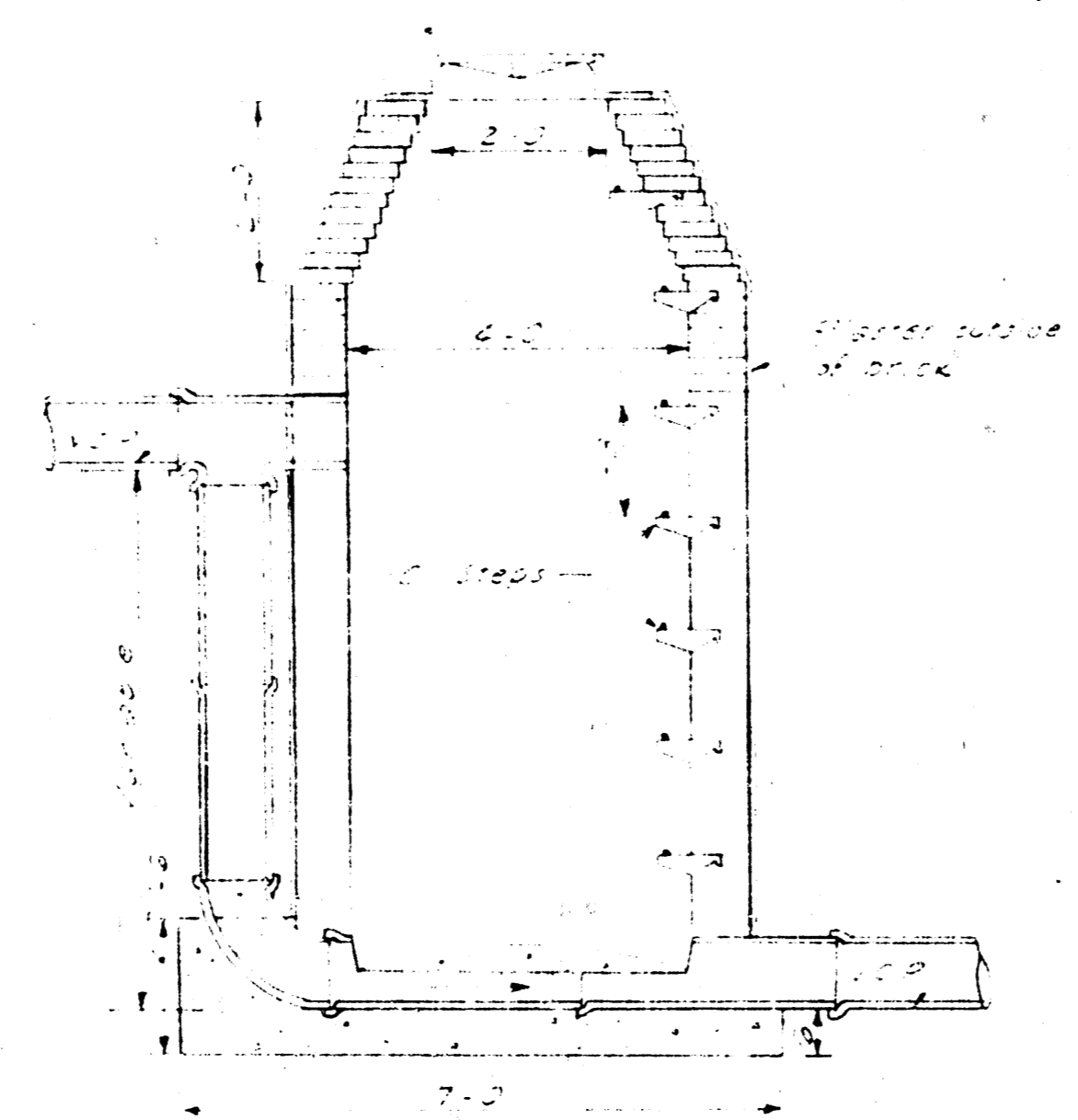
INDEX

- 1---- TITLE SHEET
- 2---- PLAN PROFILE
- 3---- SEWER DETAILS

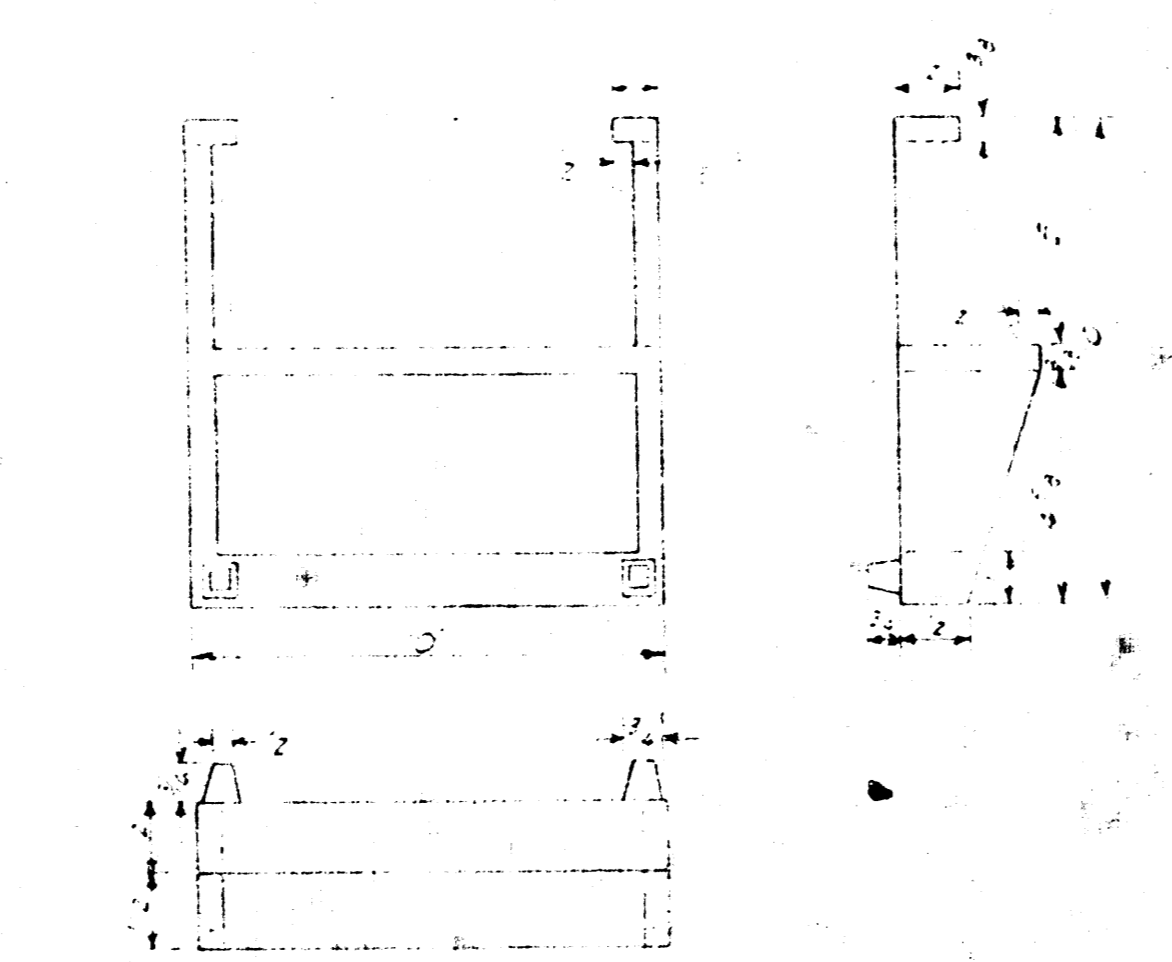




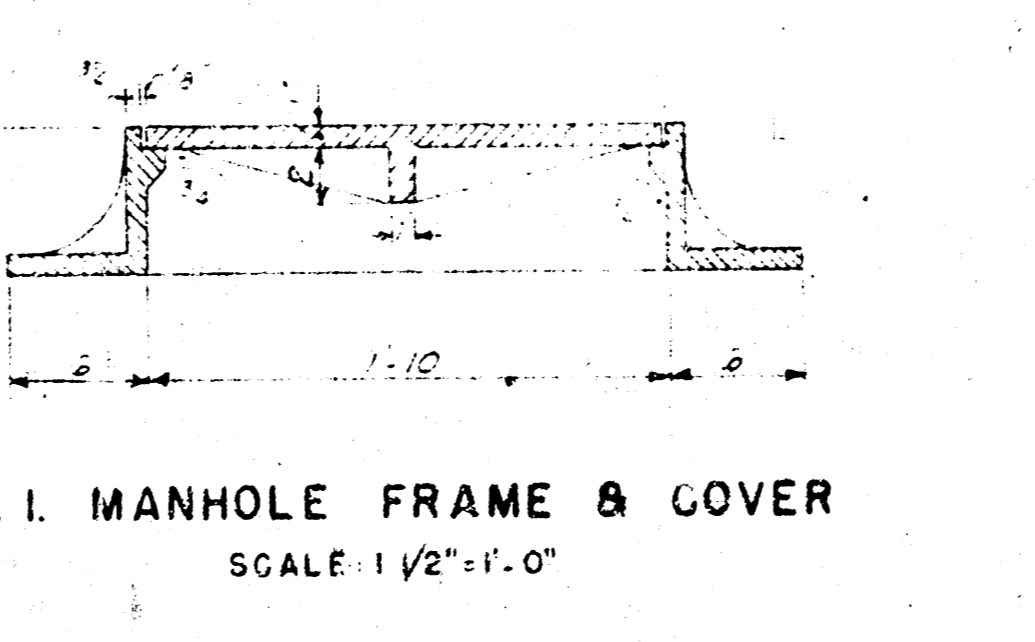
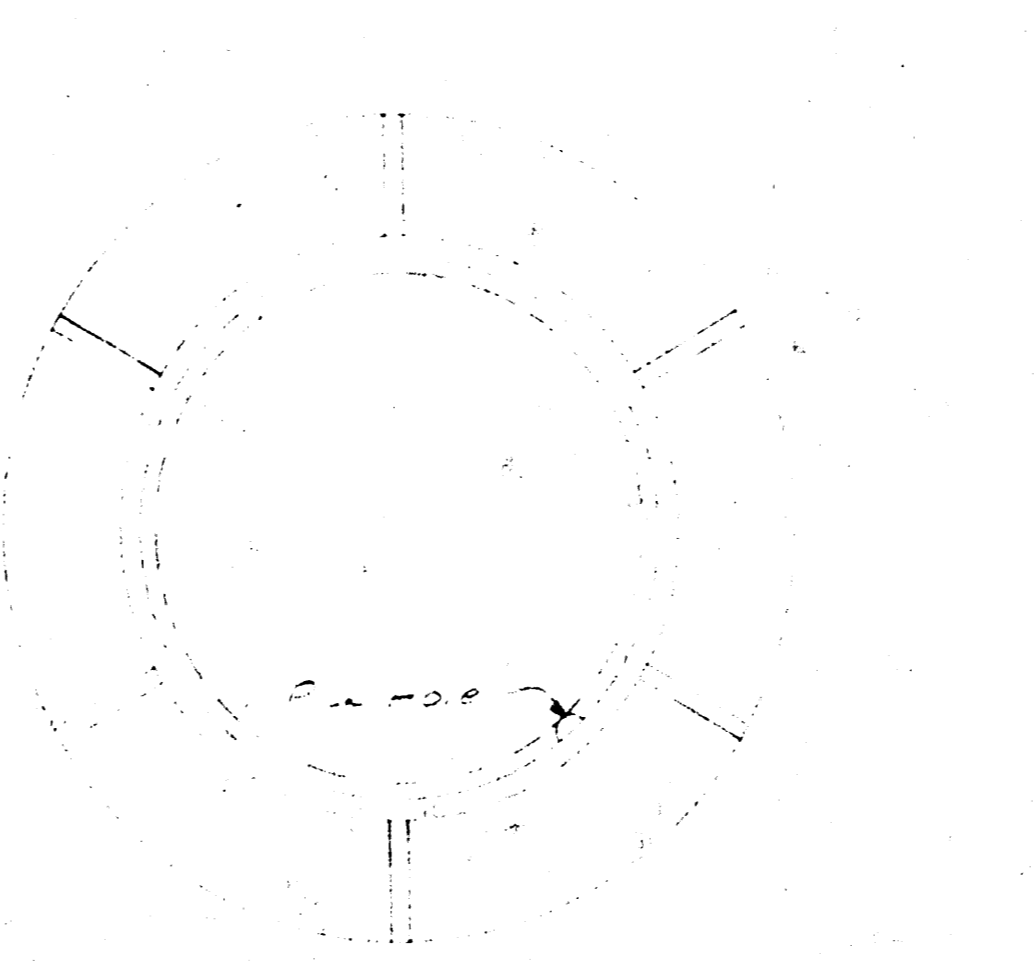
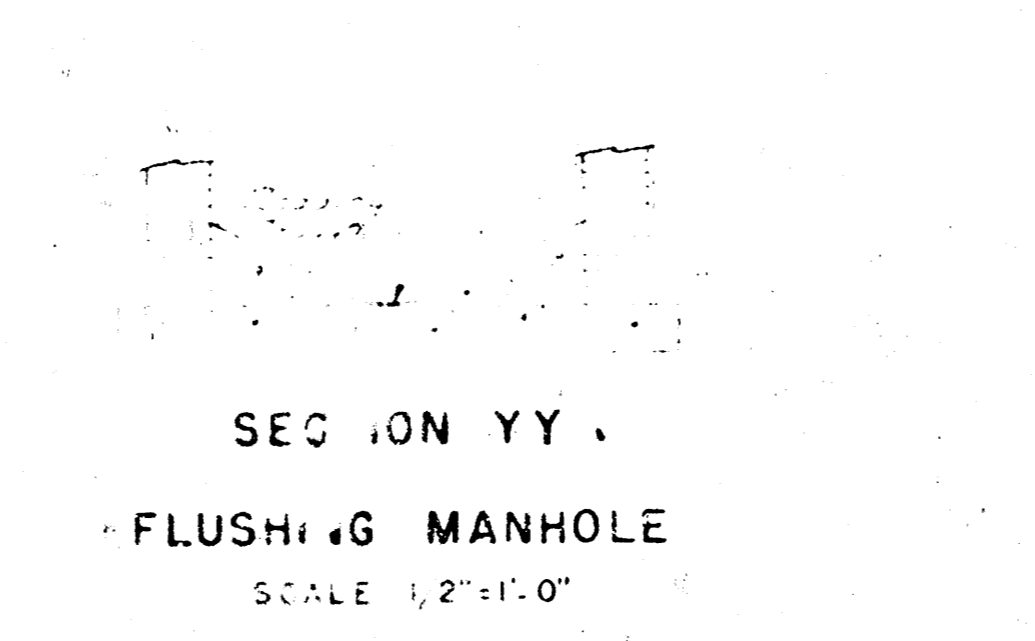
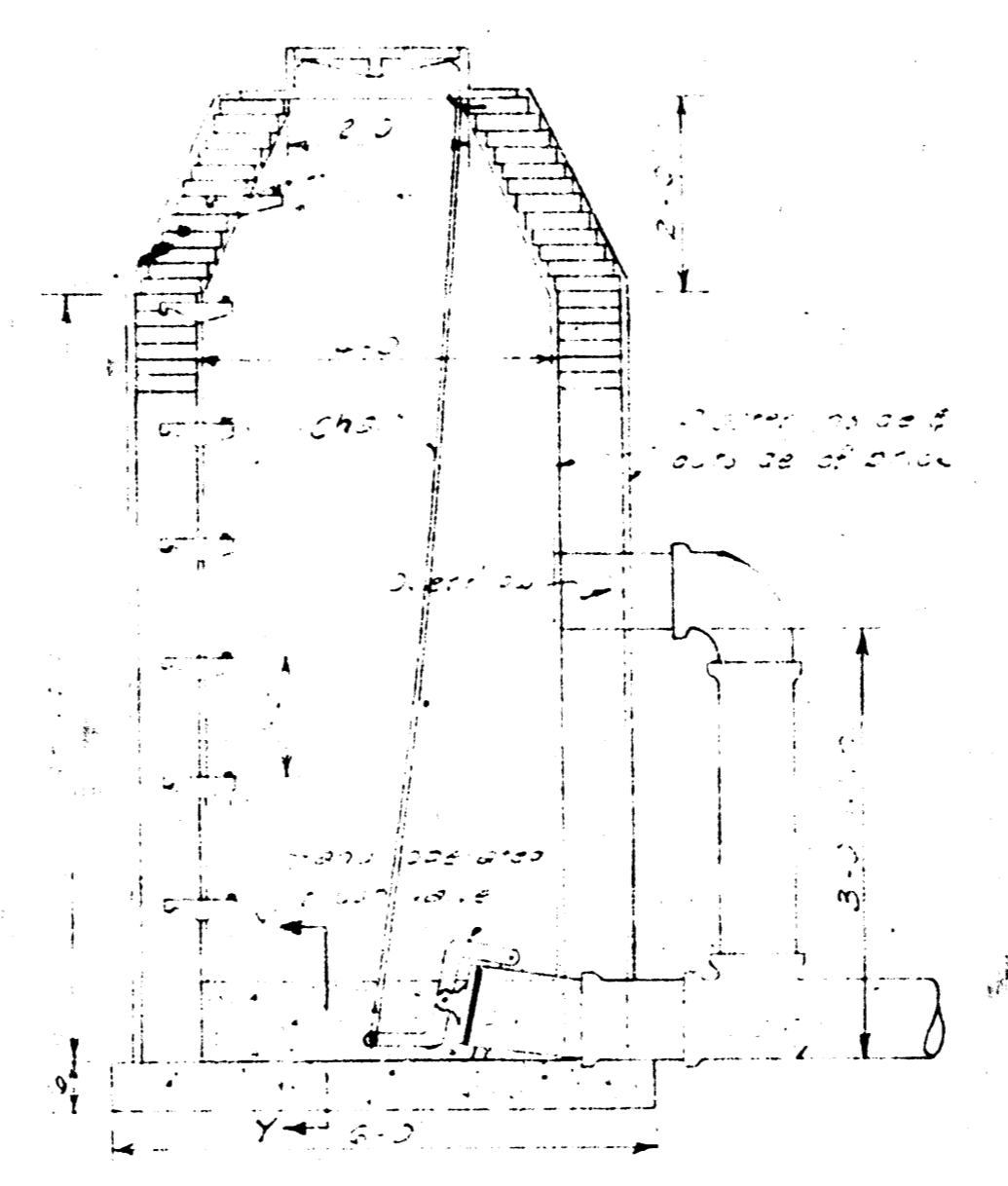
STANDARD BRICK MANHOLE  
SCALE 1/2"=1'-0"



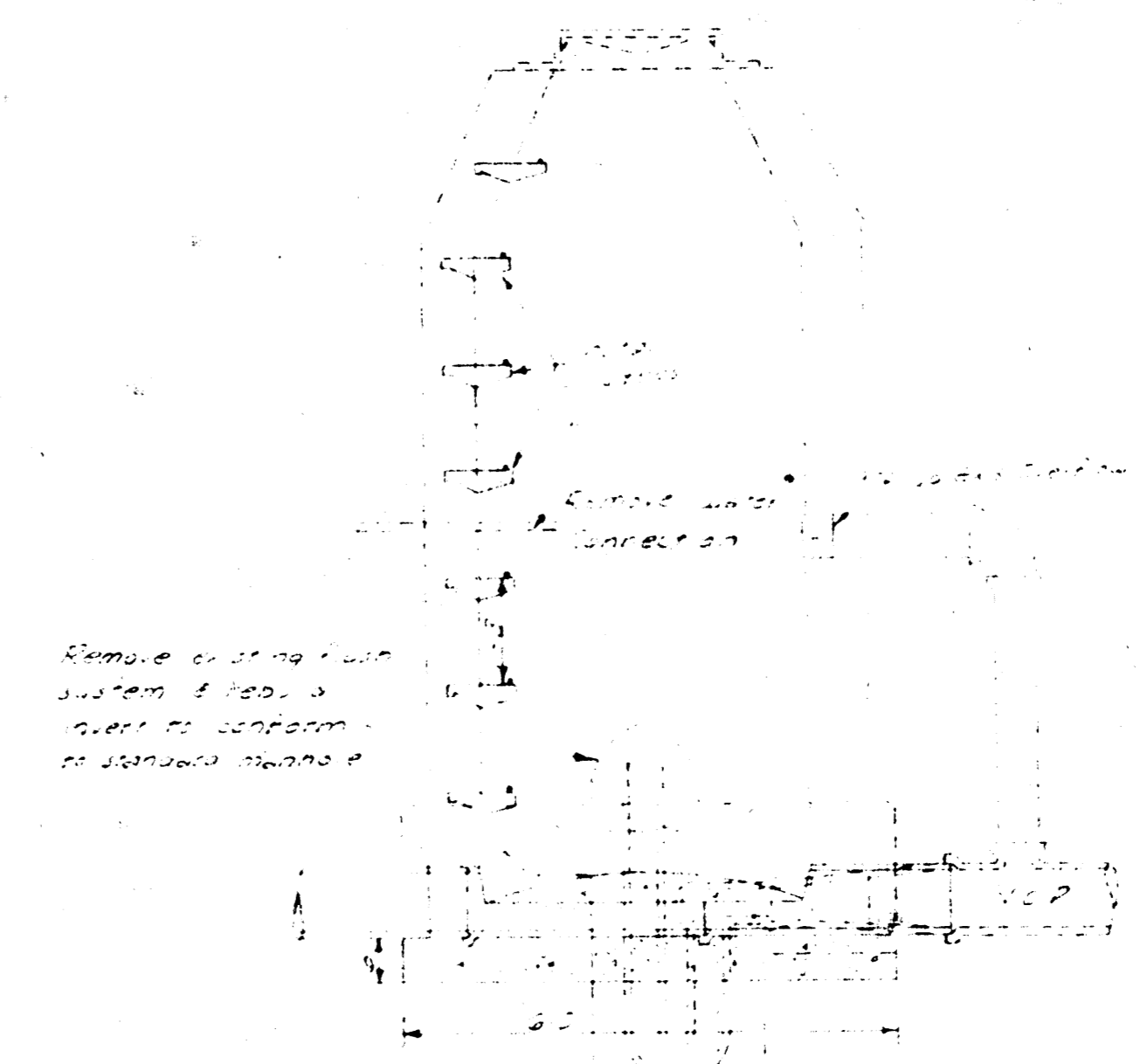
DROP MANHOLE  
SCALE 1/2"=1'-0"



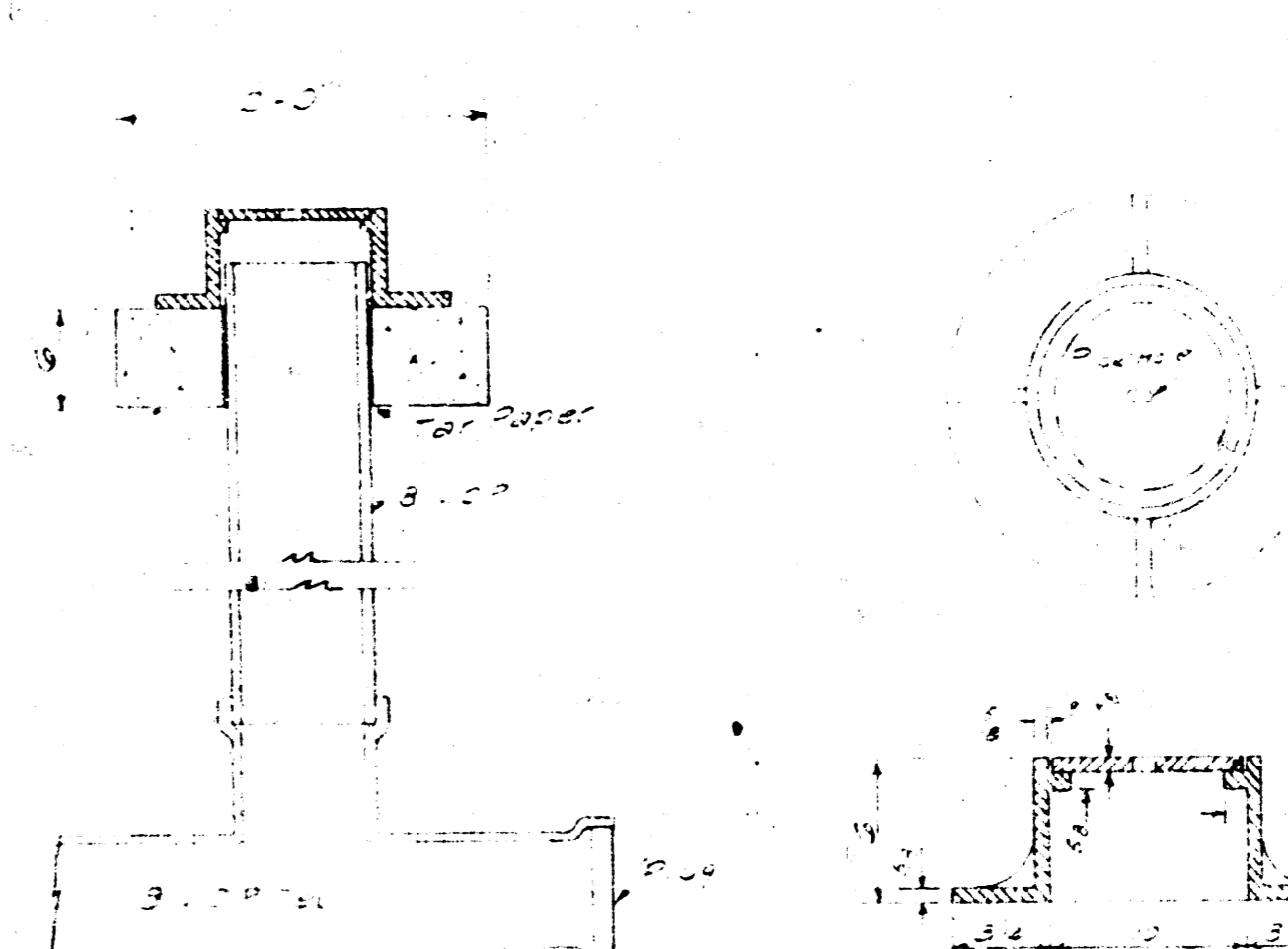
C. I. MANHOLE STEP  
WEIGHT = 11 LBS.  
SCALE 3"=1'-0"



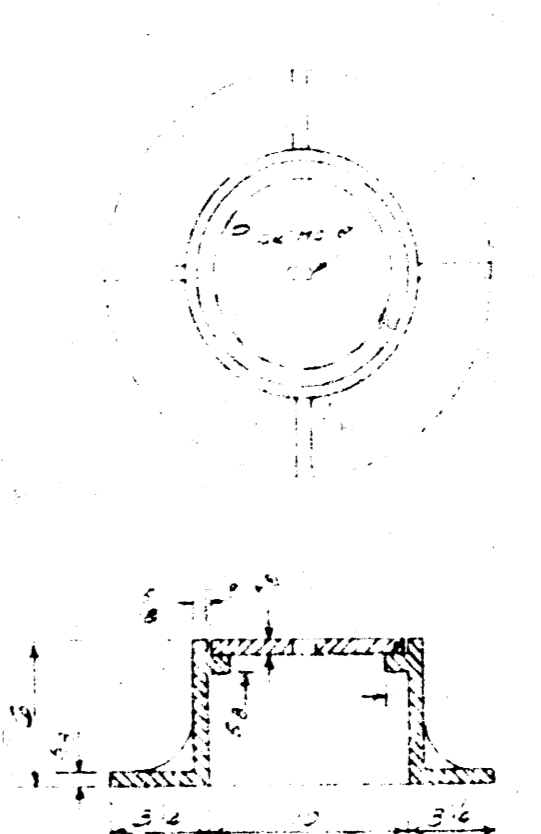
C. I. MANHOLE FRAME & COVER  
SCALE 1/2"=1'-0"



FLUSH TANK CONVERSION  
SCALE 1/2"=1'-0"



LAMP HOLE  
SCALE 1"=1'-0"



LAMP HOLE FRAME & COVER  
SCALE 1/2"=1'-0"

ALL SAINTS PARISH  
PRIVATE SANITARY SEWER  
THE EDGER ENGINEERING COMPANY  
WICHITA, KANSAS  
1948