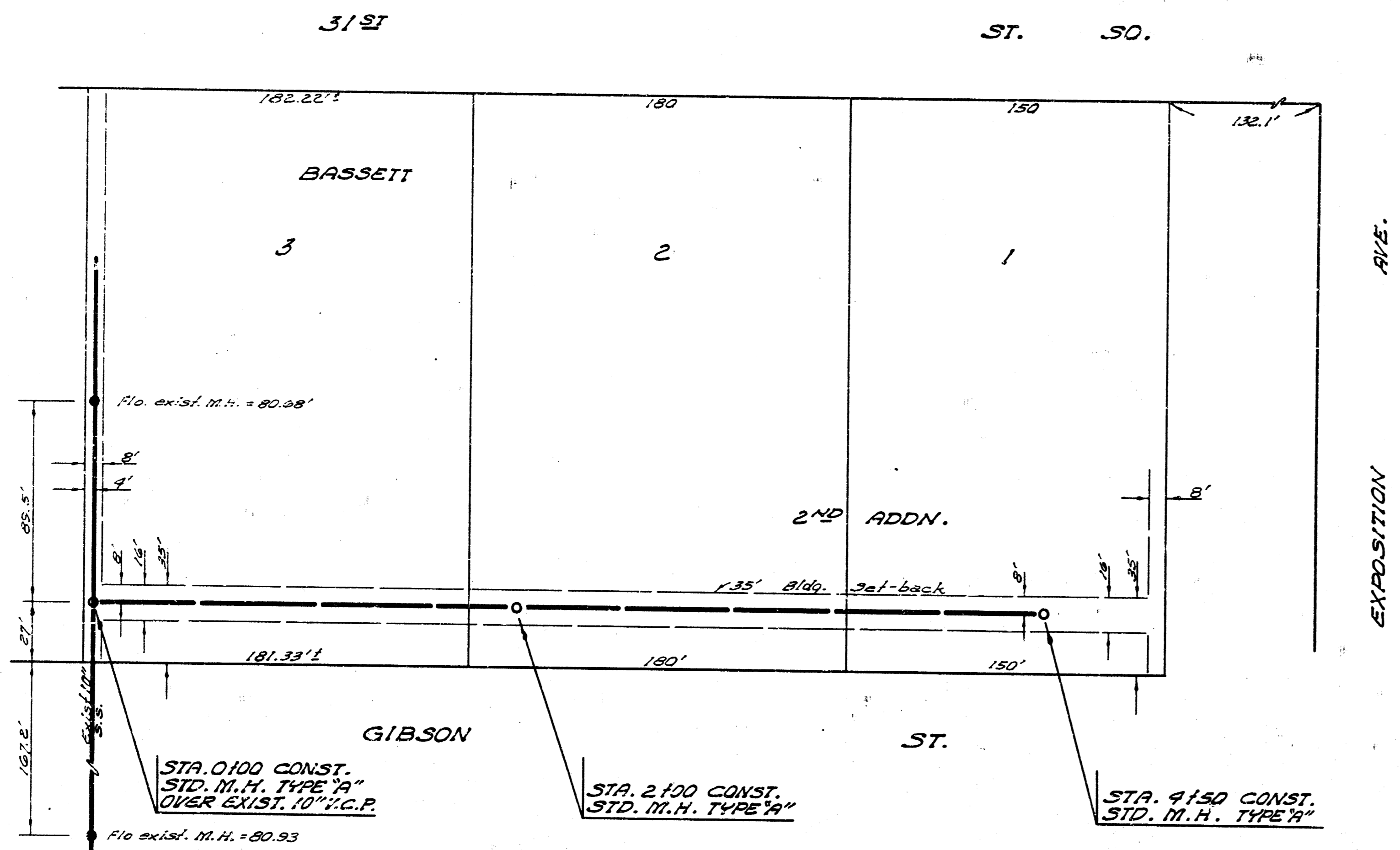


B. E. Smith
 City Engineer

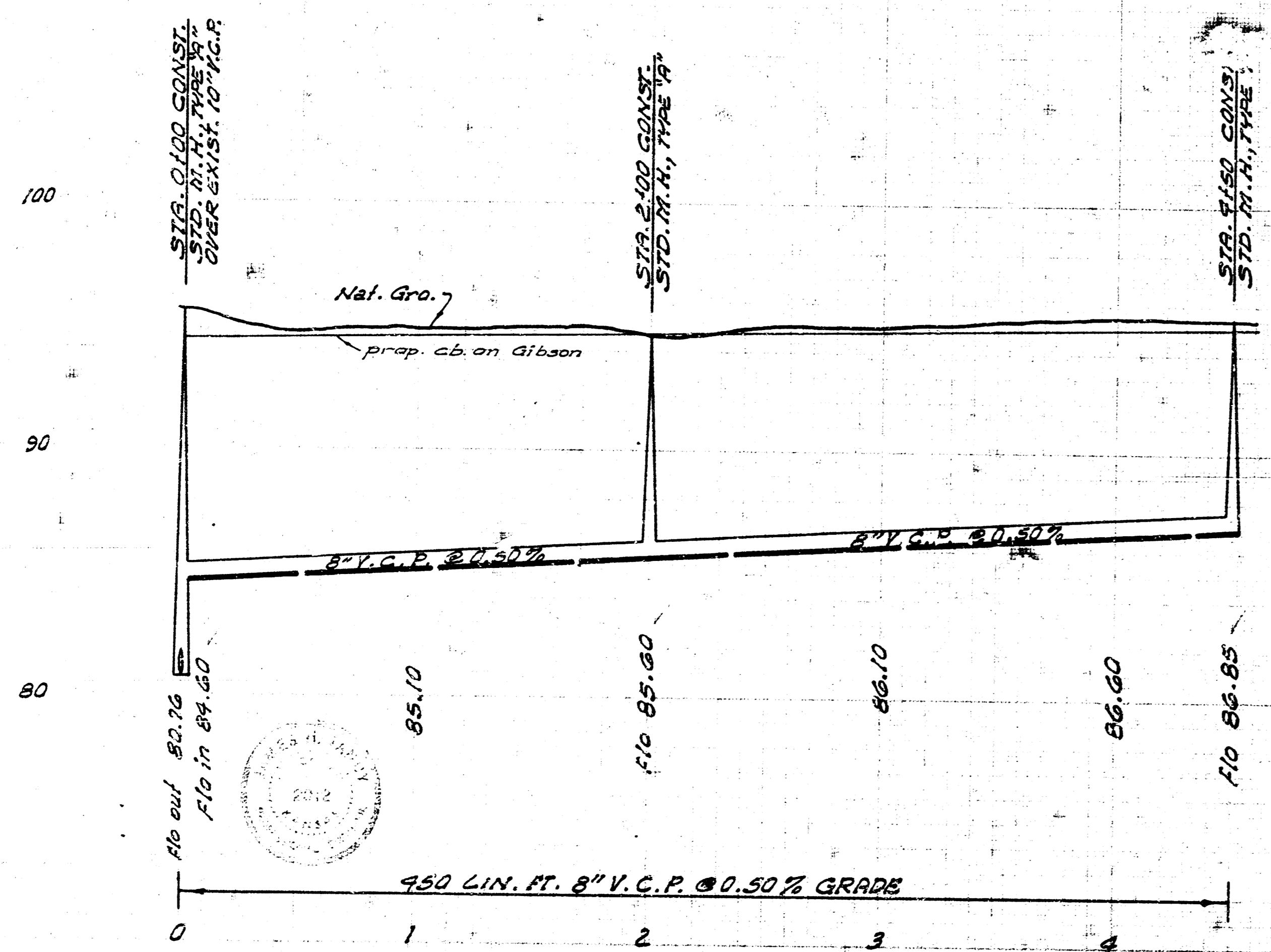


NOTE: This project will be constructed under the supervision of the CITY ENGINEER. All materials to be used shall conform to the specifications of the CITY OF WICHITA. The CONTRACTOR will reimburse the City for all cost of engineering, Plans, and inspection.



B.M. 95.12 N. Rim of exist. M.H. 89.5' N. of sta. 0+00 M.H.
 B.M. 96.14 S.E. Cor. conc. po. No. 3 N.L. Loma Linda Gardens & W.S. Elizabeth (pink No.)

Plan Scale 1"=40'
 Profile Scale 1"=4' Vert.



BASSETT 2ND ADDN. S.S.
 CITY OF WICHITA, KANSAS
 B.E. SMITH, CITY ENGINEER
 PRIVATE PROJECT
 DATE: APRIL 1967