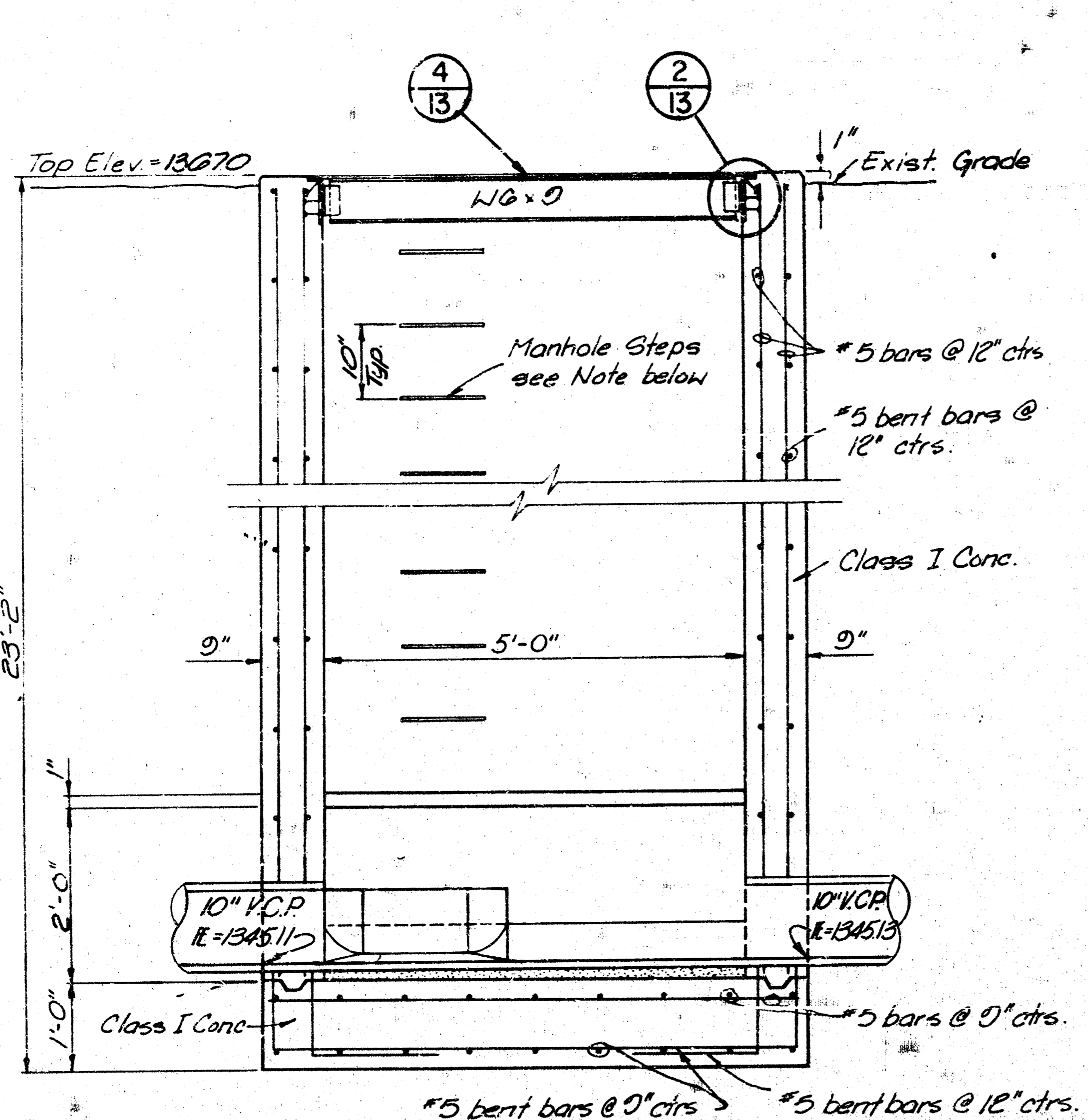


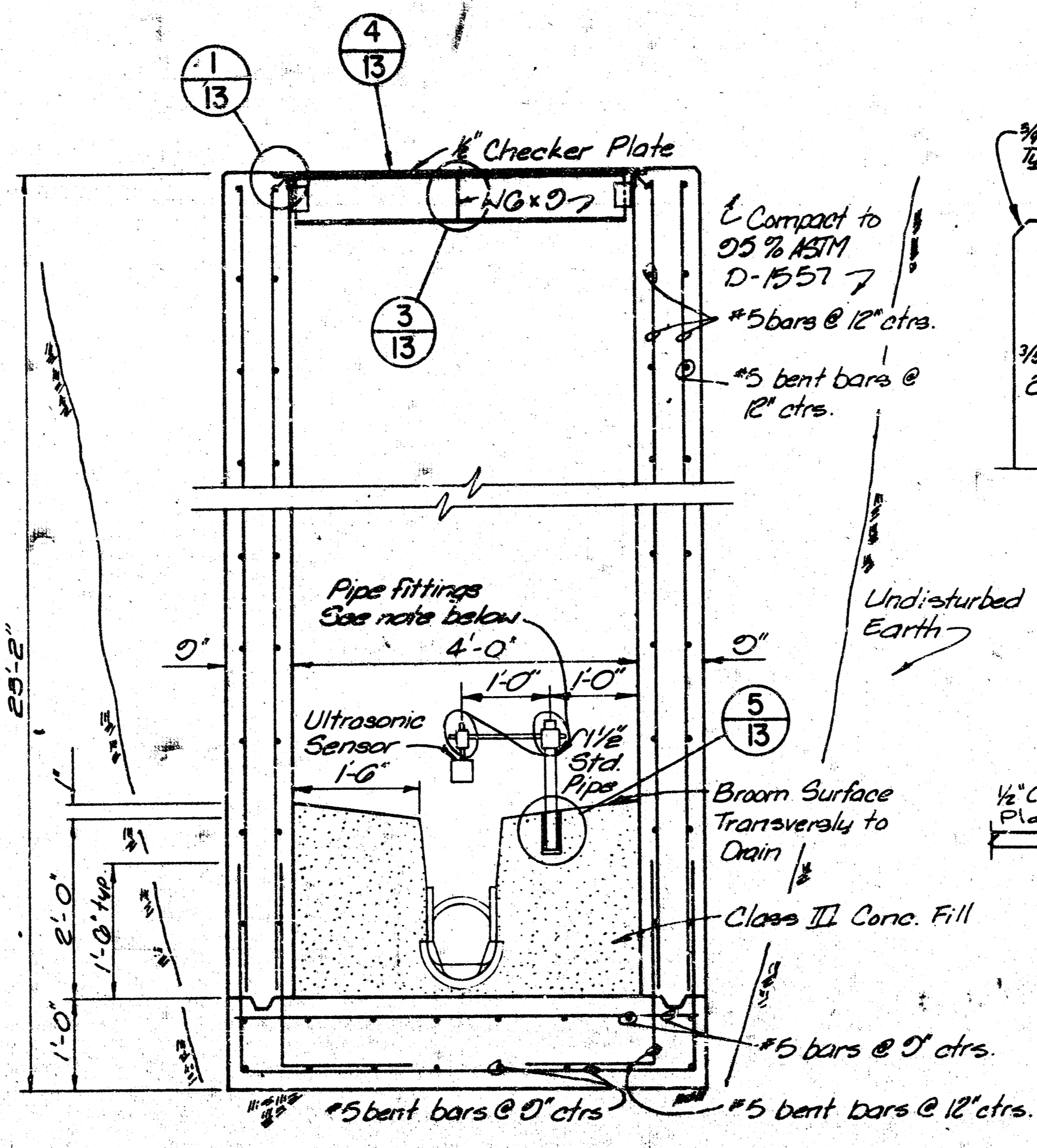


DO NOT TRIM THIS BORDER WHEN PRINTS ARE TO BE BOUND



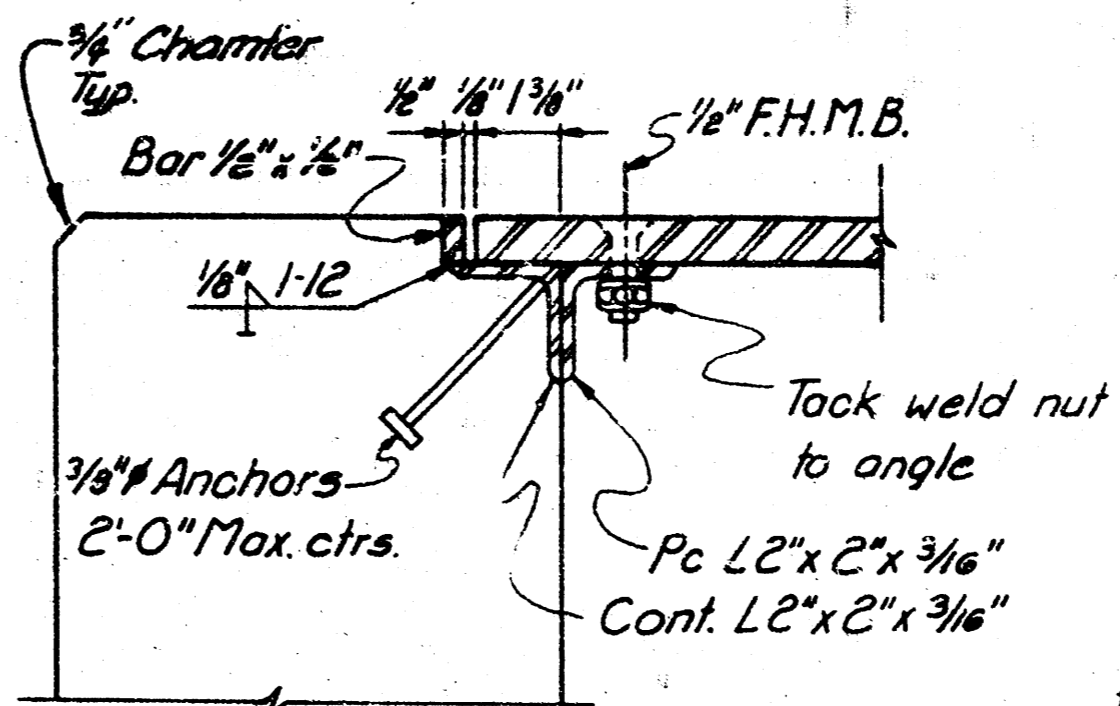
**SECTION A**  
3/4"=1'-0"

Note: Pipe fittings to allow for vertical & horizontal adjustments or removal of equipment.

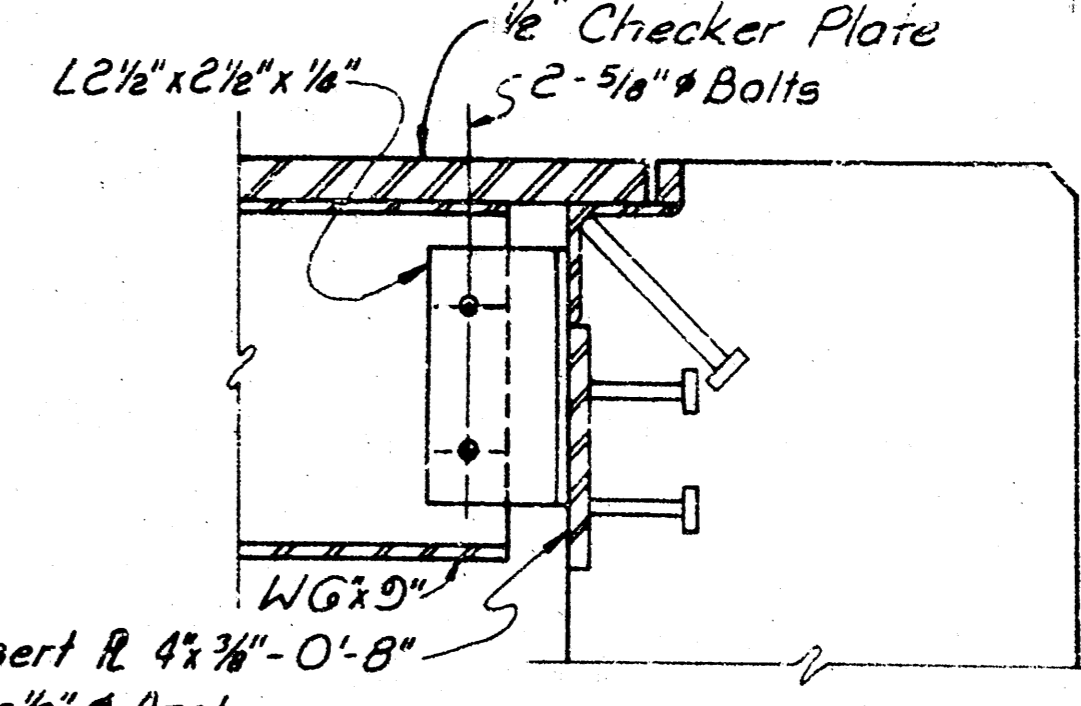


**SECTION B**  
3/4"=1'-0"

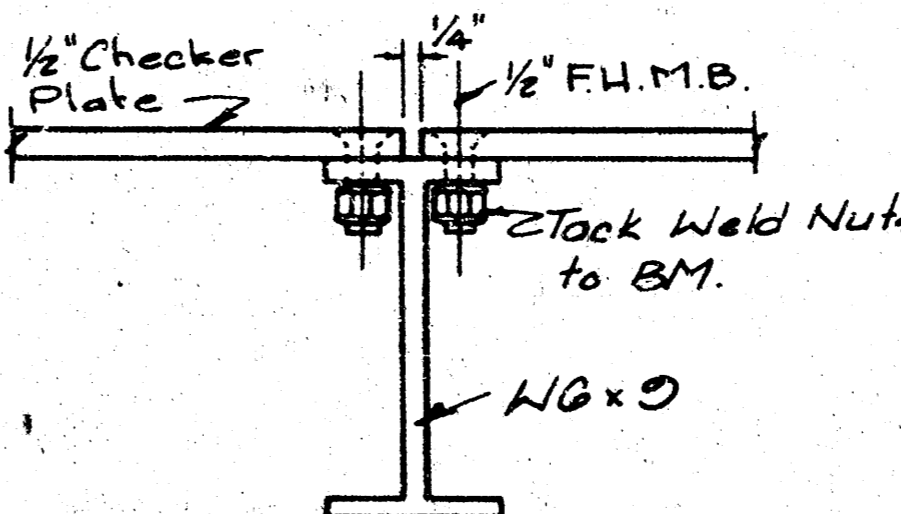
Undisturbed Earth



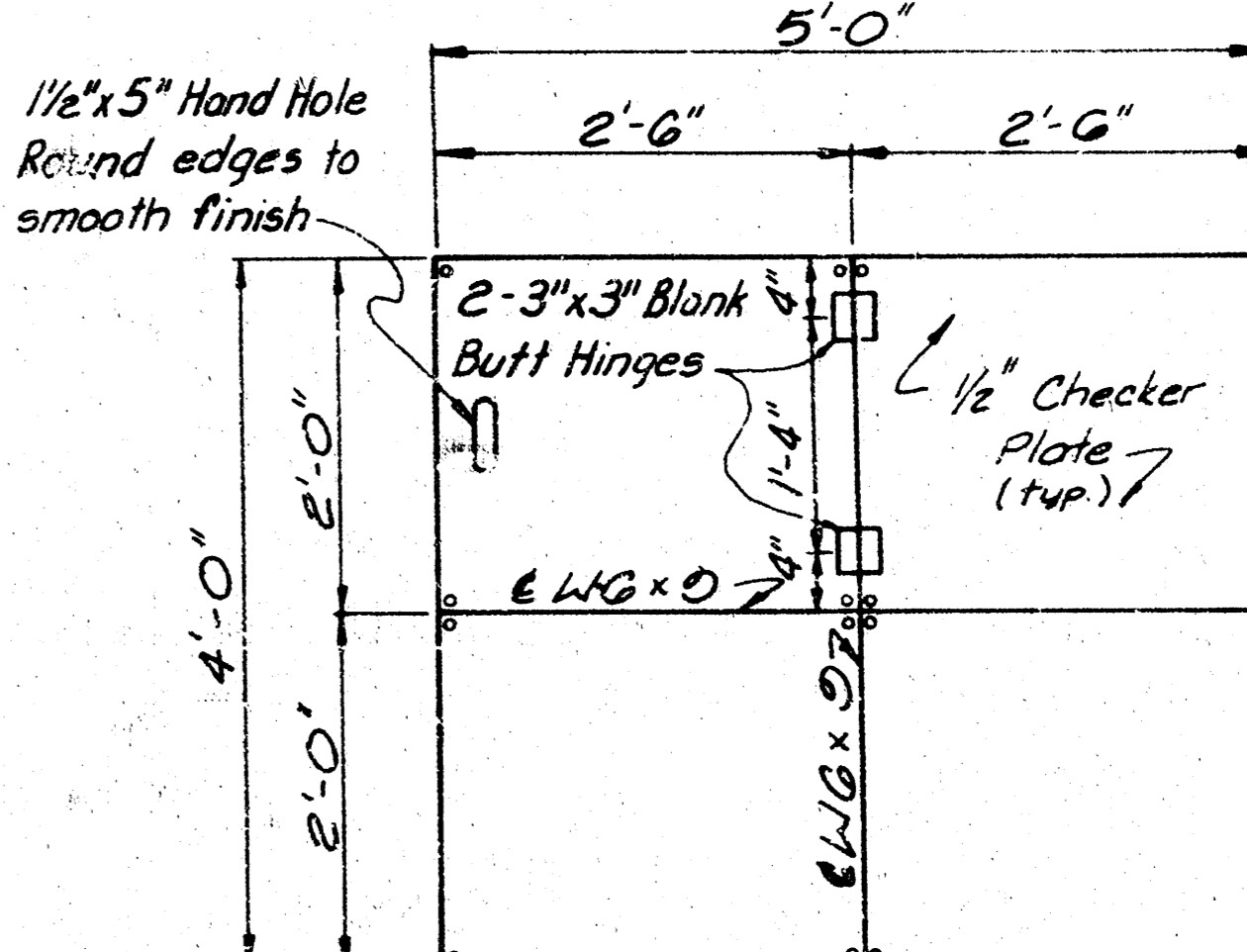
**DETAIL 1**  
SCALE: 3"=1'-0"



**DETAIL 2**  
SCALE: 3"=1'-0"

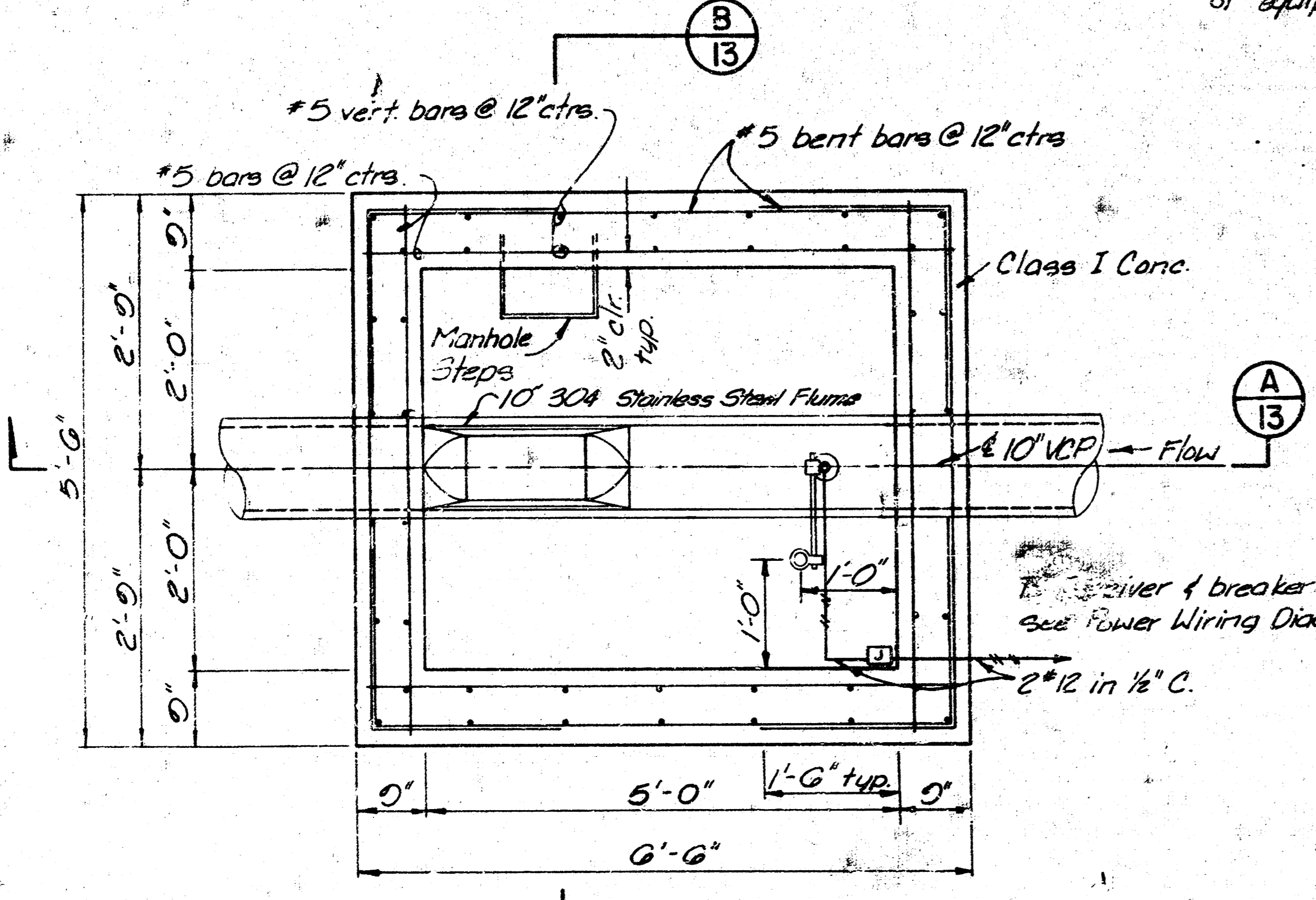


**DETAIL 3**  
SCALE: 3"=1'-0"



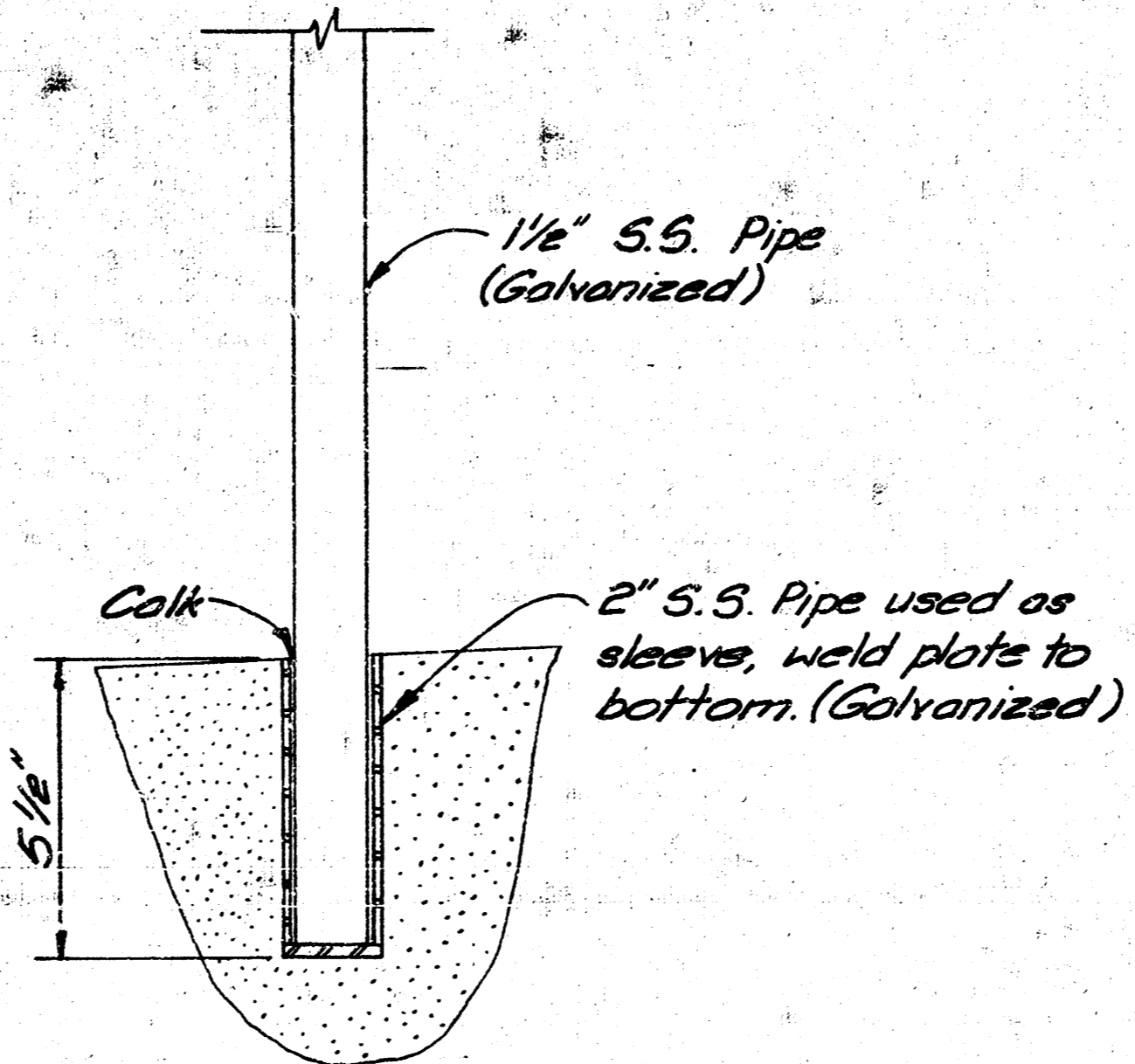
**DETAIL 4**  
SCALE: 3/4"=1'-0"

Note: All Structural Steel shall be Hot Dipped Galvanized.

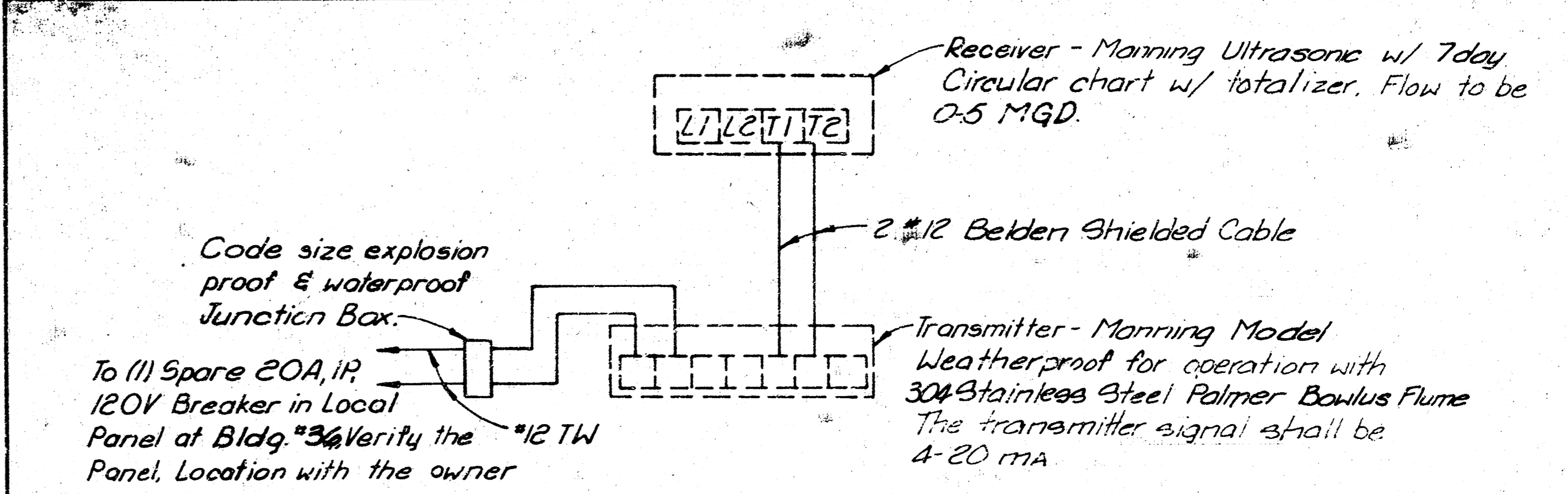


**PLAN FLUME STRUCTURE**  
3/4"=1'-0"

Note: Manhole steps for the Flume Structure shall be M.A. Industries Model PS-1-PF. M.A. Industries are located in Peach Tree City, GA. Tele. (404) 487-7761, Ext. 511.



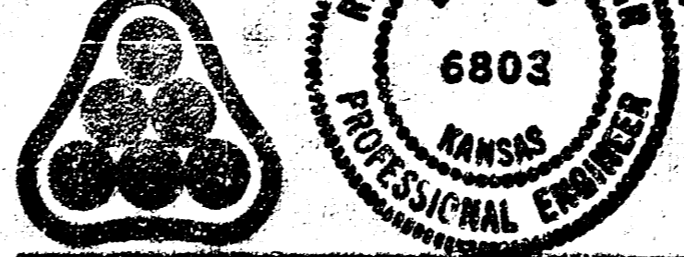
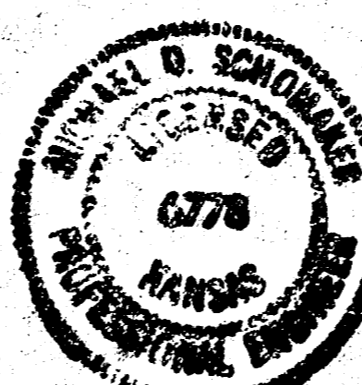
**DETAIL 5**  
SCALE: 3"=1'-0"



**TRANSMITTER & RECEIVER POWER WIRING DIAGRAM**  
NO SCALE

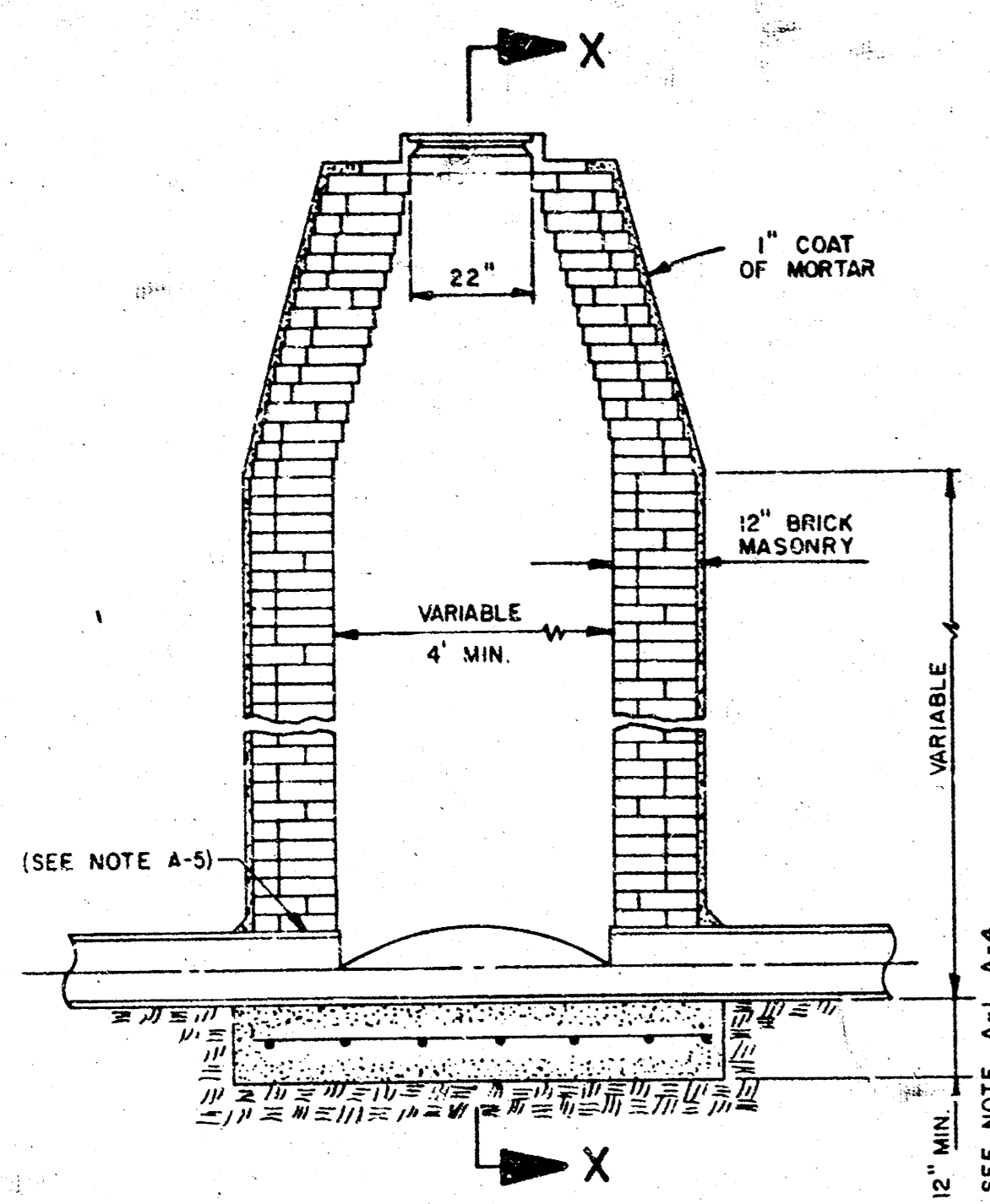
- ELECTRICAL NOTES:**
1. Provide Explosion Proof Seals in Flume Structure.
  2. Power source need not be the same phase at transmitter & receiver.
  3. U.L. approved 60/40 PVC Conduit shall be used where feeders are to run underground. Provide Steel E11s and Riser where PVC Conduit is to run above ground. All PVC Conduit shall be provided with separate ground conductor, sized per N.E.C.
  4. The 1/2" Conduit shall be installed along the inside wall of the west Tunnel and up through the floor into the Boiler Room located in Plant III. Installation shall be coordinated and approved by Beech Aircraft prior to installation. The recorder shall be mounted inside the Boiler Room at a location provided by Beech Aircraft.
  5. The transmitter and receiver shall be provided with a one year warranty & one year supply of ink & charts. One day start up service shall be provided by the equipment manufacturer to calibrate and start up the transmitter & receiver.

DATE	NATURE OF REVISION	BY	CKD.	APPR.

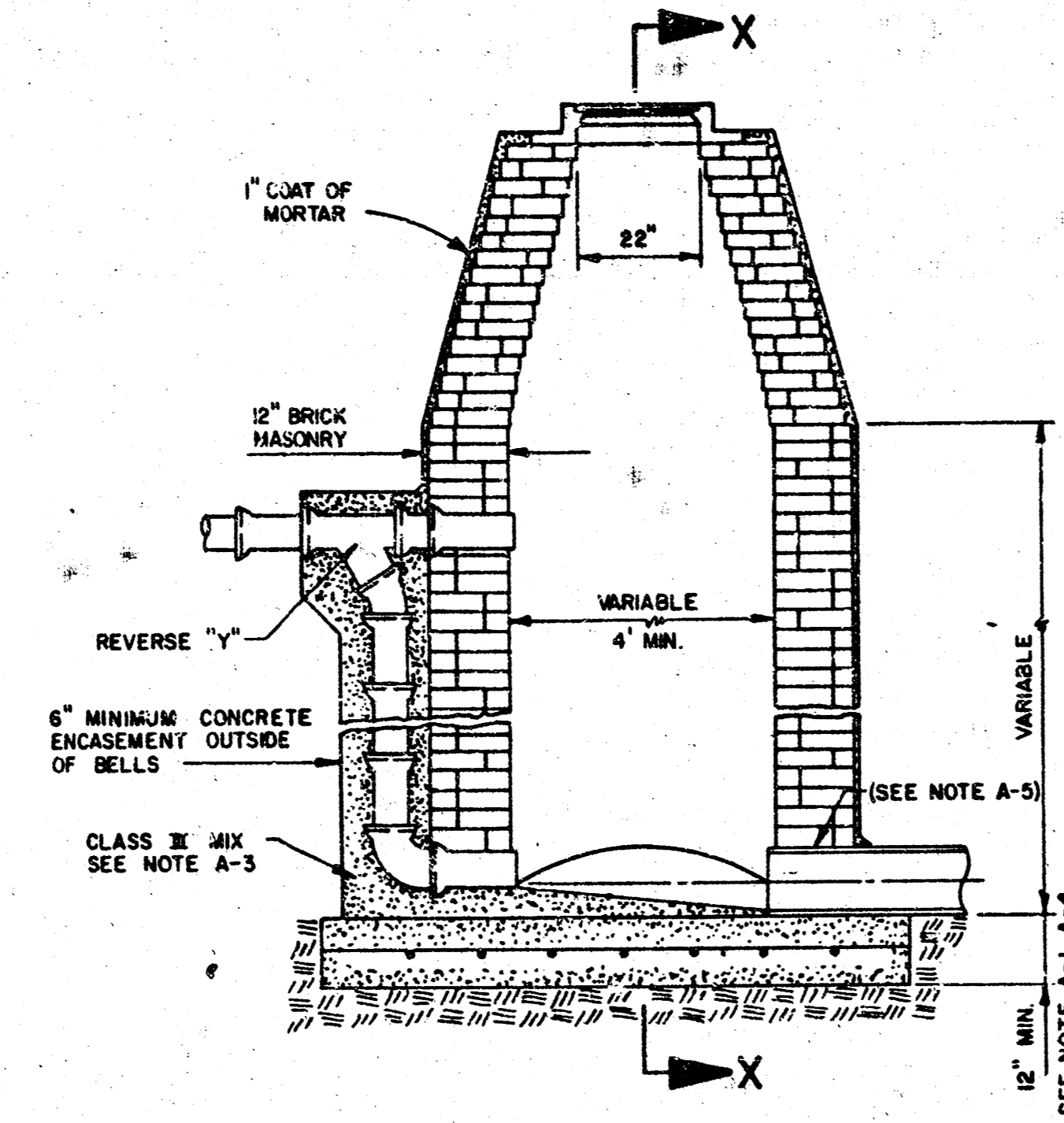


**PROFESSIONAL ENGINEERING CONSULTANTS, P.A.**  
ENGINEERS  
WICHITA, KANSAS

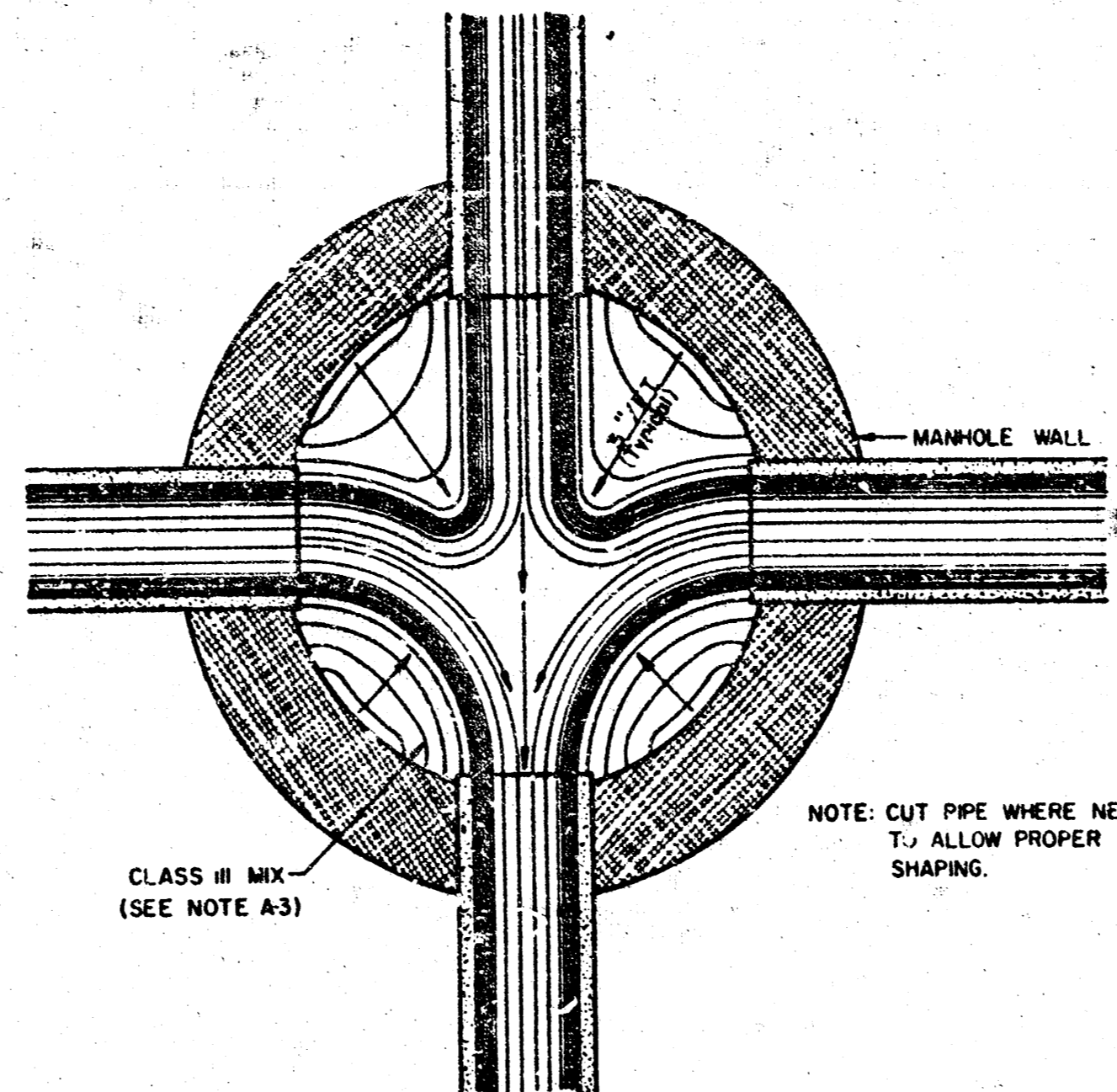
<b>BEECH AIRCRAFT CORP.</b>			
PLANT ENGINEERING DEPT.			
FLOW MONITORING AND SEWER MODIFICATIONS PLANT III			
DESIGNED:	DATE: 5/30/80	CHECKED:	APPROVED:
DRAWN:			
SCALE:	No. D0-312G-13		



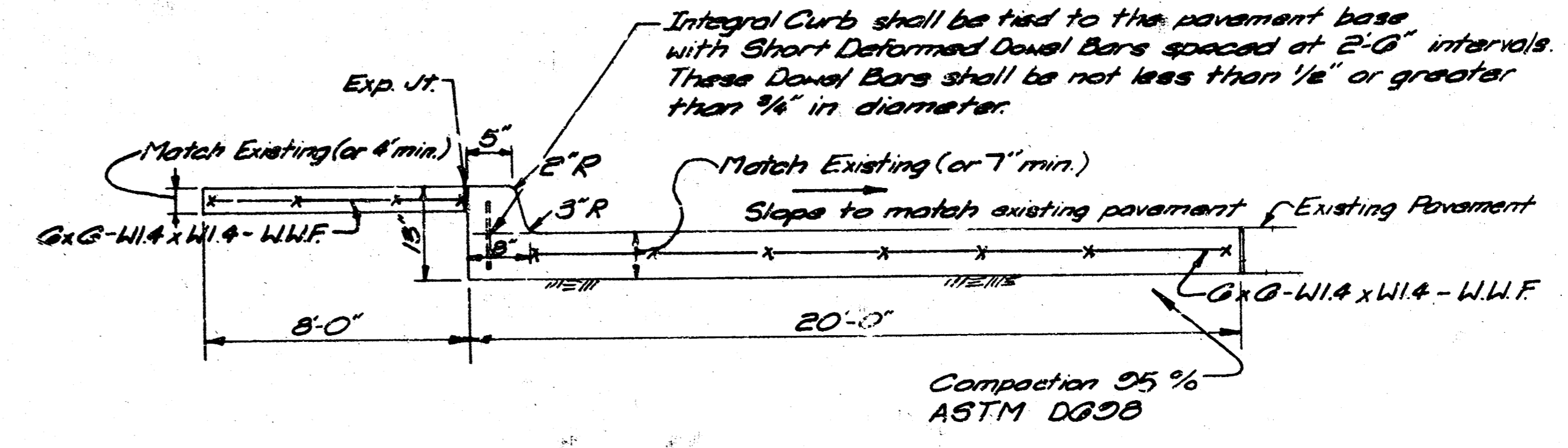
STANDARD MANHOLE  
TYPE AA



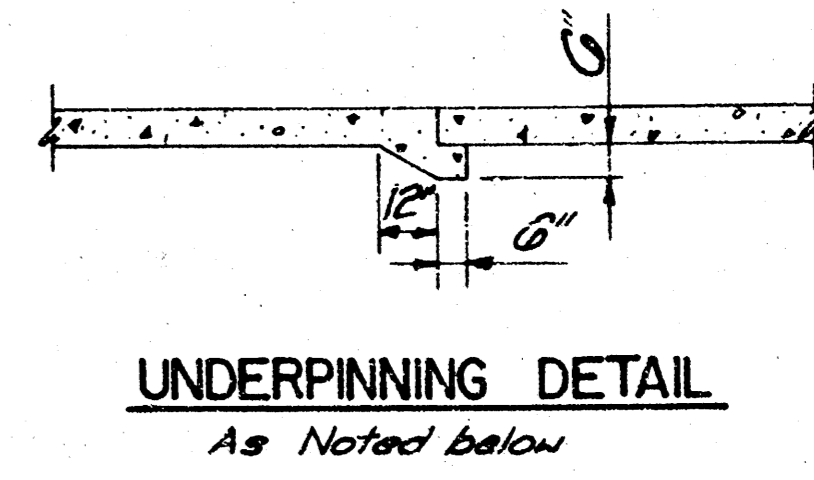
OUTSIDE DROP MANHOLE  
TYPE CC



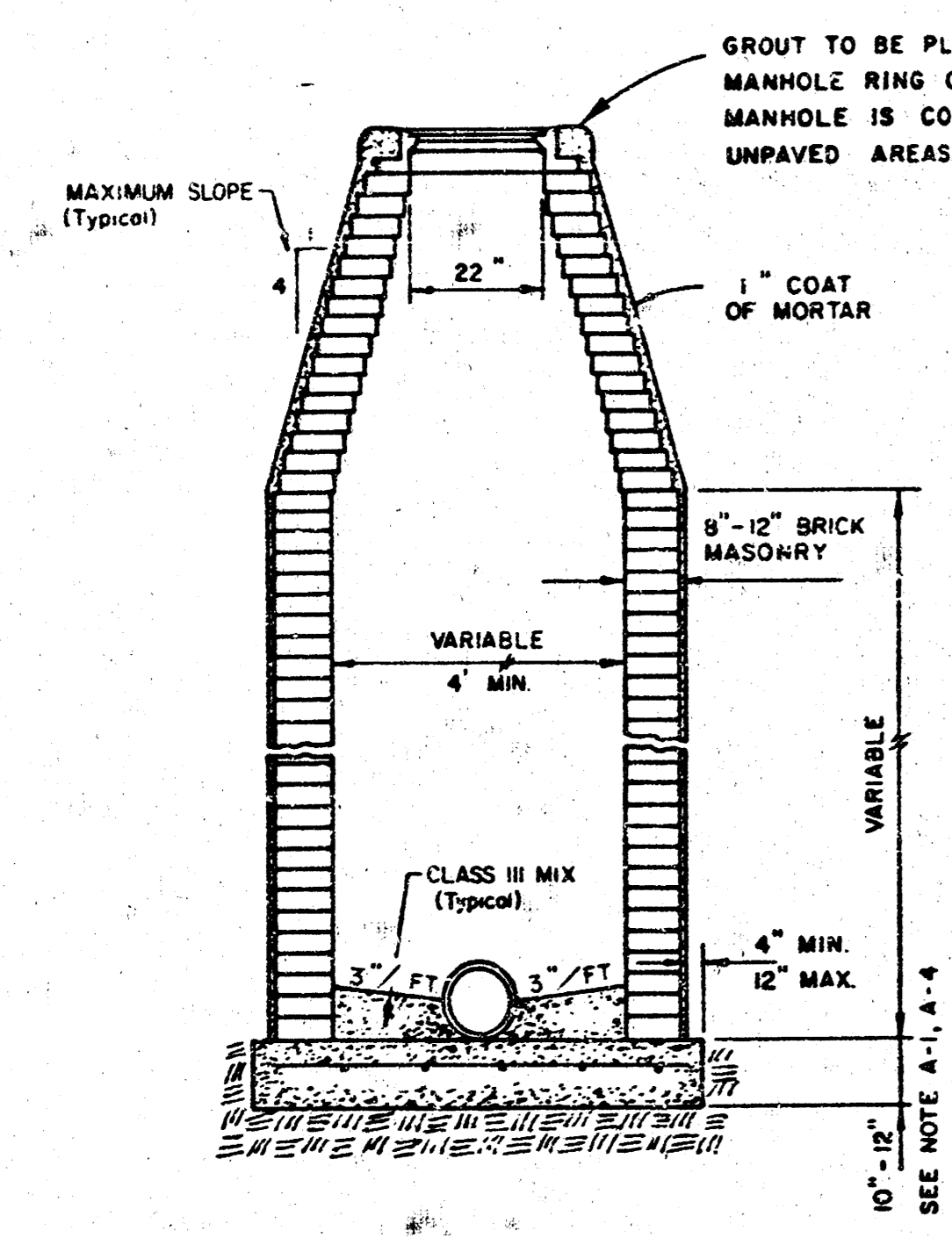
TYPICAL MANHOLE  
FLOOR SHAPING



TYPICAL SECTION  
SIDEWALK & CONCRETE PAVEMENT

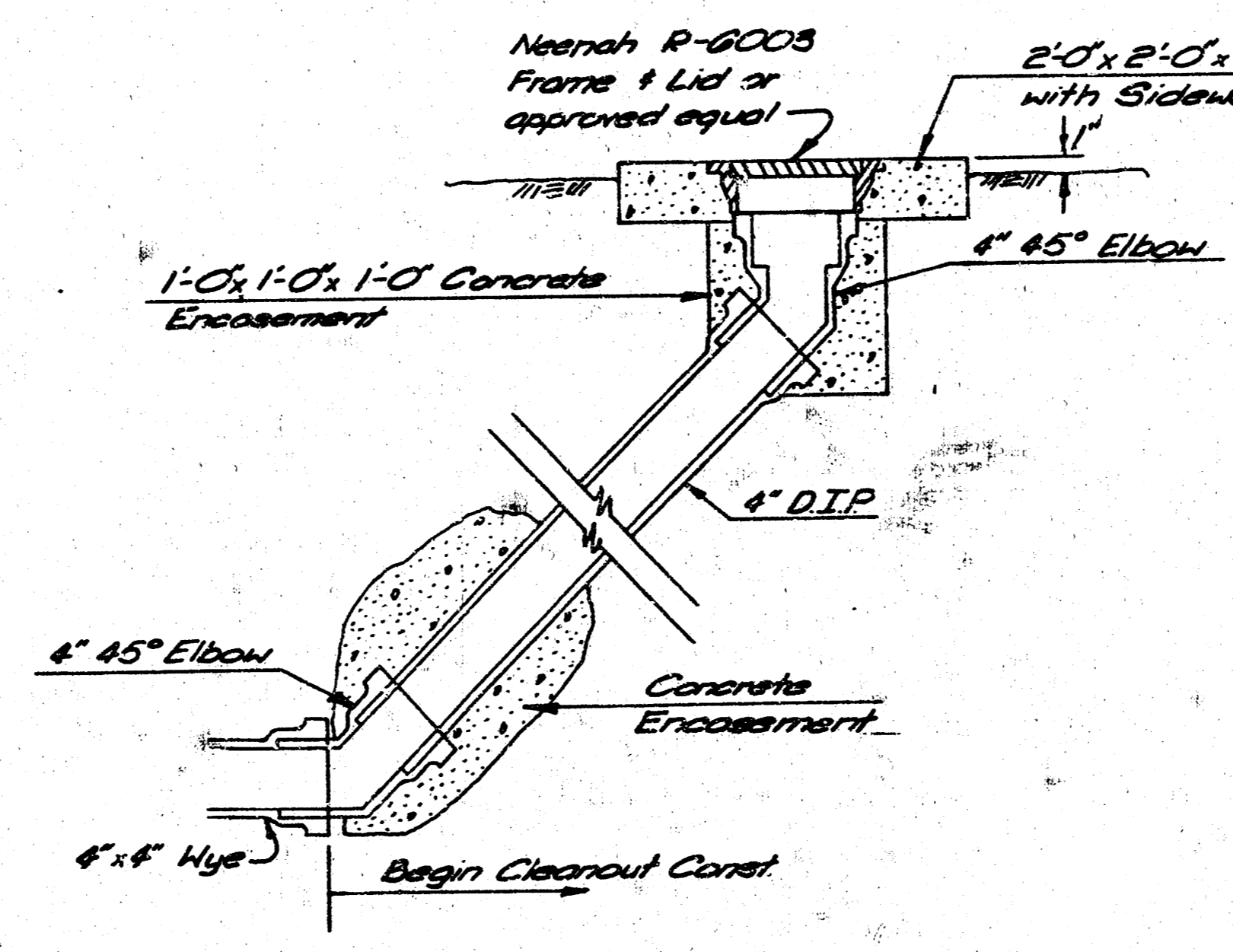


UNDERPINNING DETAIL  
As Noted below

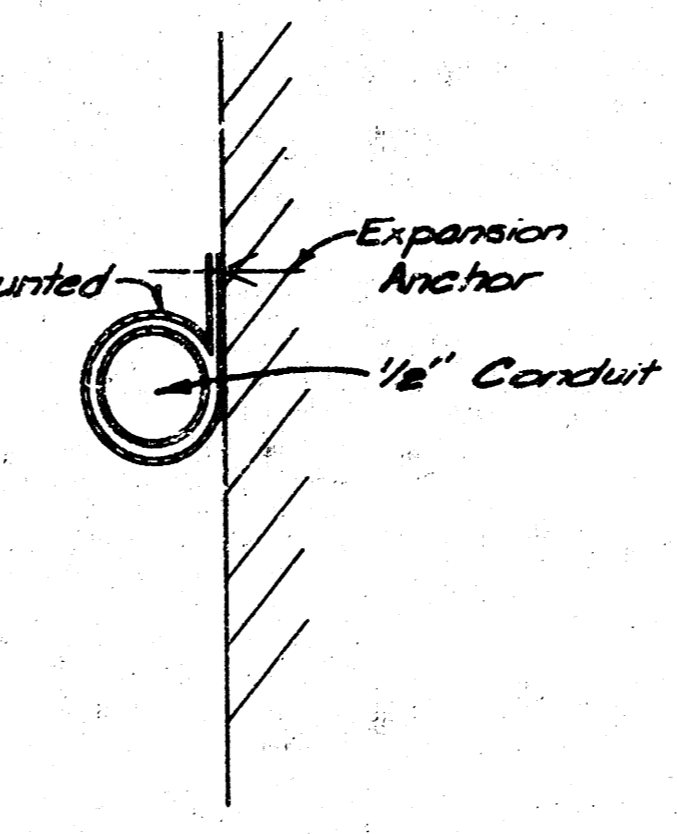


SECTION X

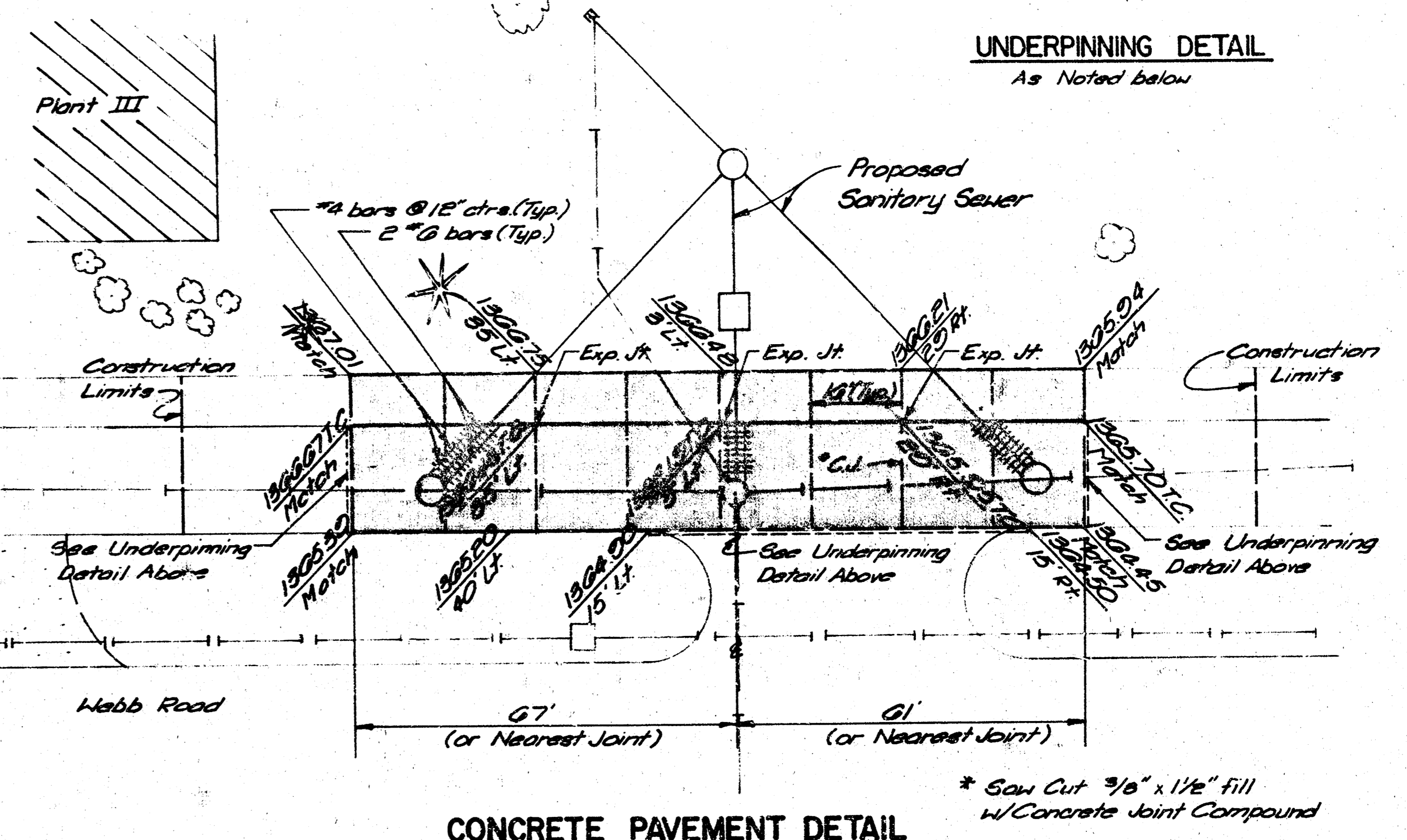
- NOTES
1. IN THE OPINION OF THE ENGINEER, THE MANHOLE SUBGRADE APPEARS UNSTABLE, THE CONTRACTOR HAS THE OPTION TO COMPACT SUBGRADE AS SHOWN OR INCREASE THE THICKNESS OF THE MANHOLE BASE AS DIRECTED BY THE ENGINEER.
  2. STEEL REINFORCING IS REQUIRED IN ALL MANHOLE BASES.
  3. MORTAR USED IN MASONRY CONSTRUCTION TO BE CLASS III MIX.
  4. ALL MANHOLE BASES TO BE CLASS I MIX.
  5. APPROVED FLEXIBLE WATERSTOP GASKETS SHALL BE INSTALLED TO JOIN THE SEWER TO THE MANHOLE WALL WHEN A.B.S., COMPOSITE PIPE, POLYETHYLENE PIPE, OR P.V.C. PIPE IS USED. FOR OTHER TYPES OF PIPE THE SEWER EXTENDING FROM MANHOLES SHALL BE SUPPORTED WITH CONCRETE TO THE FIRST JOINT OF PIPE FROM THE MANHOLE WALL. CONCRETE SUPPORTS MAY BE DELETED PROVIDED AN APPROVED FLEXIBLE WATERSTOP GASKET IS INSTALLED TO JOIN THE SEWER TO THE MANHOLE WALL.
  6. PIPE PLUGS SHALL BE AS MANUFACTURED BY PIPE SUPPLIER WHEN AVAILABLE.



4" CLEANOUT DETAIL



TYPICAL CONDUIT  
MOUNTING DETAIL

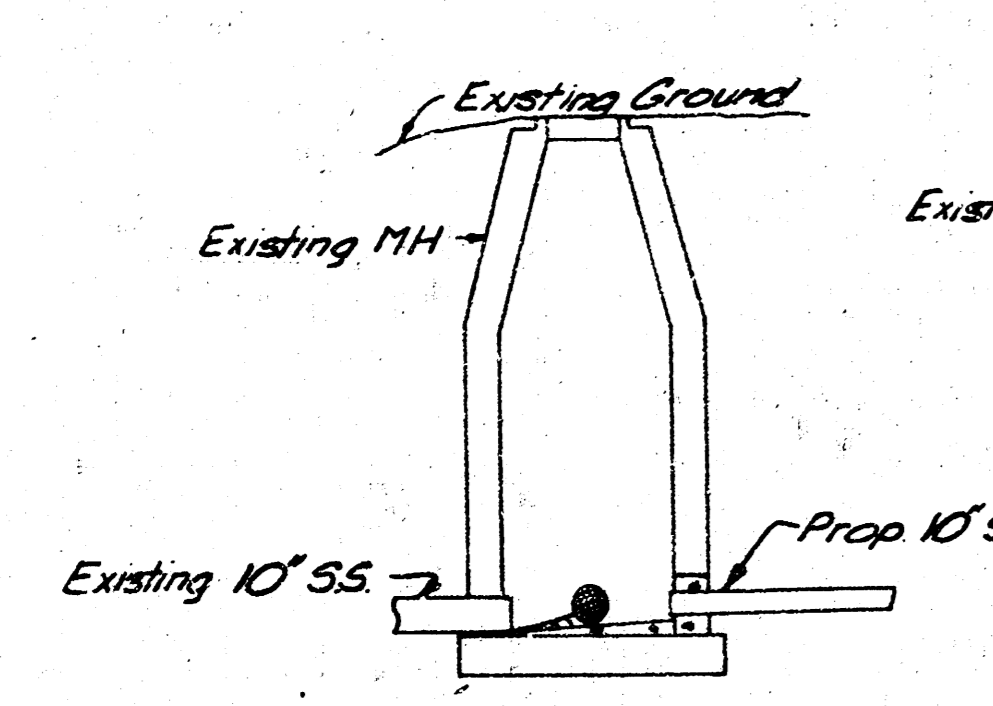


CONCRETE PAVEMENT DETAIL

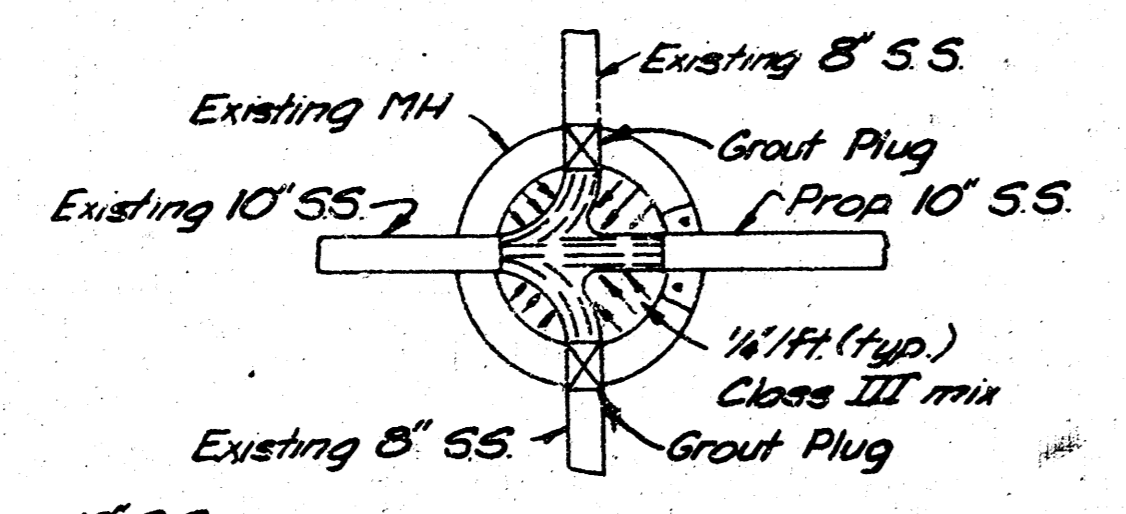
Construction Priority List

Priority	Description
1	Construct MH #1.
1	Construct Flume Structure and monitoring Equipment.
1	Construct MH #2 around existing Sanitary Sewer, existing sewer to remain in service.
1	Construct MH #3 around existing Sanitary Sewer, existing sewer to remain in service.
1	Install Lines 1, 2 and 3 and provide temporary plug at Station 0+00.
2	Remove temporary plug at Station 0+00.
2	Install Line No. 4 from Station 0+55.
2	Break out existing sewer line at MH #2 and MH #3 and plug existing sewer lines.
2	Start up Metering Equipment.
2	Replace Pavement and Sidewalk.
2	Sod and Cleanup.

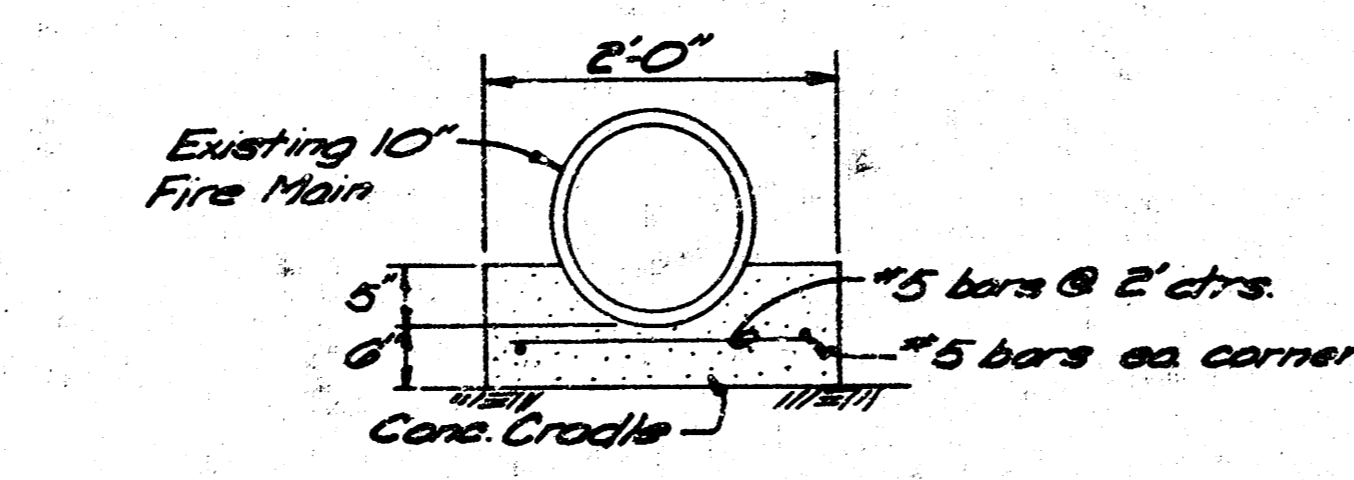
Note: Construction Priority List Ranking  
1 Highest Priority  
2 Lowest Priority



EXISTING MH  
BREAK IN & MODIFICATION  
DETAIL



EXISTING MH  
FLOOR SHAPING DETAIL



CONCRETE CRADLE DETAIL

Note: Breakout Existing MH wall as necessary, install pipe, and regrout watertight with nonshrink grout

DATE	NATURE OF REVISION	BY	CK'D.	APPR.

PROFESSIONAL ENGINEERING CONSULTANTS, P.A.  
ENGINEERS  
WICHITA, KANSAS

REFERENCE DRAWINGS

--	--

APPROVED

--	--	--	--

BEECH AIRCRAFT CORP.  
PLANT ENGINEERING DEPT.  
FLOW MONITORING  
AND SEWER MODIFICATIONS  
PLANT III

DESIGNED:	DATE:	CHECKED:	APPROVED:
DRAWN:			
SCALE:	No. D0-312G-14		

DO NOT TRIM THIS BORDER WHEN PRINTS ARE TO BE BOUND