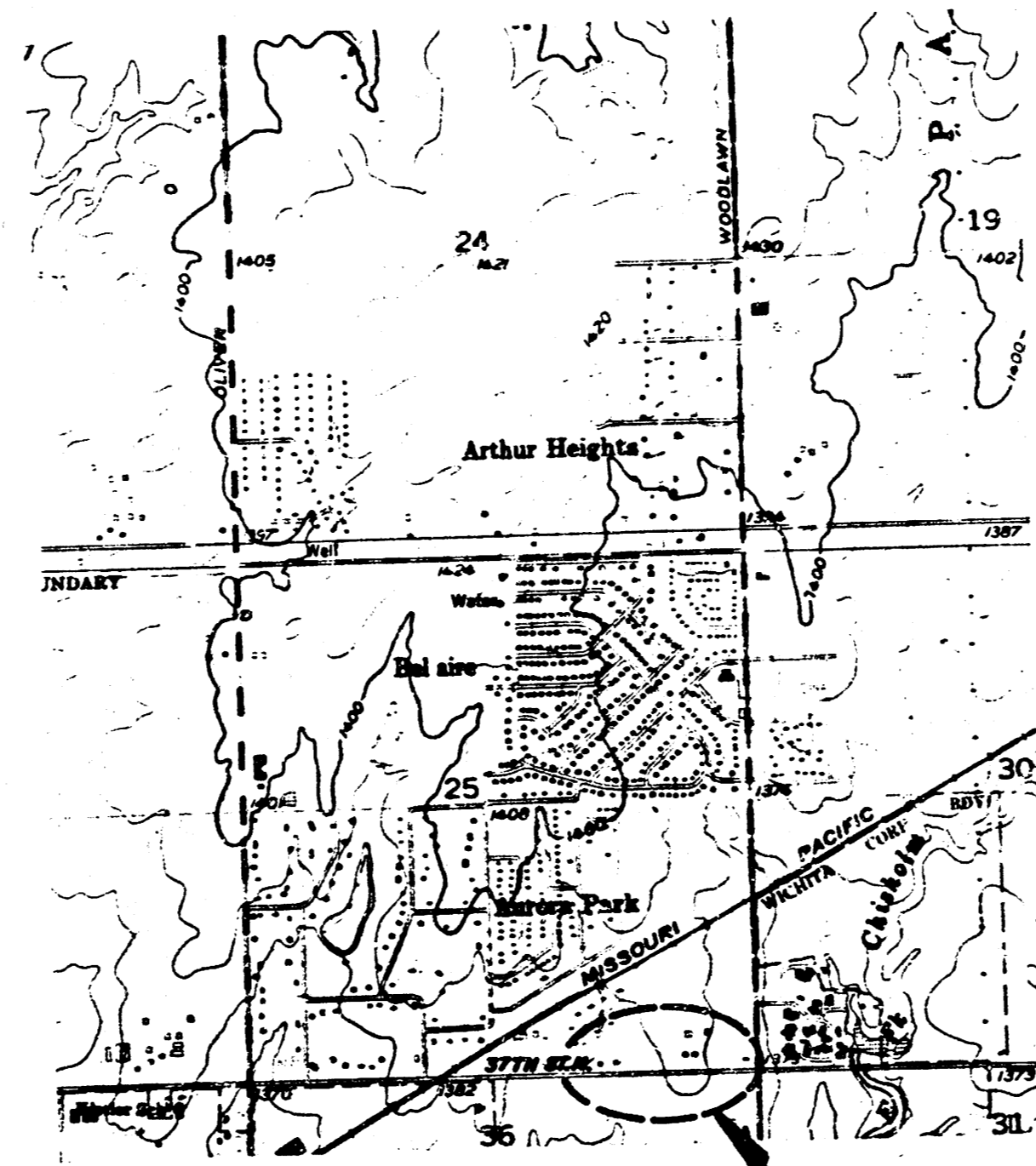


PLANS
FOR
SANITARY SEWER SYSTEM
BEL AIRE-COZY HOMES ADD.

SE0987

468-76-245-80001-000-000-153



PROJECT LOCATION

APPROVED AS NOTED
By CITY ENGINEER OF WICHITA
Sanitary Sewers *4/16 3/13/88*
Storm Sewers _____
Driveway Approaches _____
Water Mains _____
Paving _____

NOTE TO CONTRACTOR

This project will be constructed under the supervision of the CITY ENGINEER and conforming to the SPECIFICATIONS of the CITY OF WICHITA. The CONTRACTOR will pay the City of Wichita for all costs of plan review, inspection and booking per contract.



AS CONSTRUCTED

DEISS & GOODNESS ENGINEERS
2100 WEST 21ST STREET
WICHITA, KANSAS 67203
(913) 832-0225

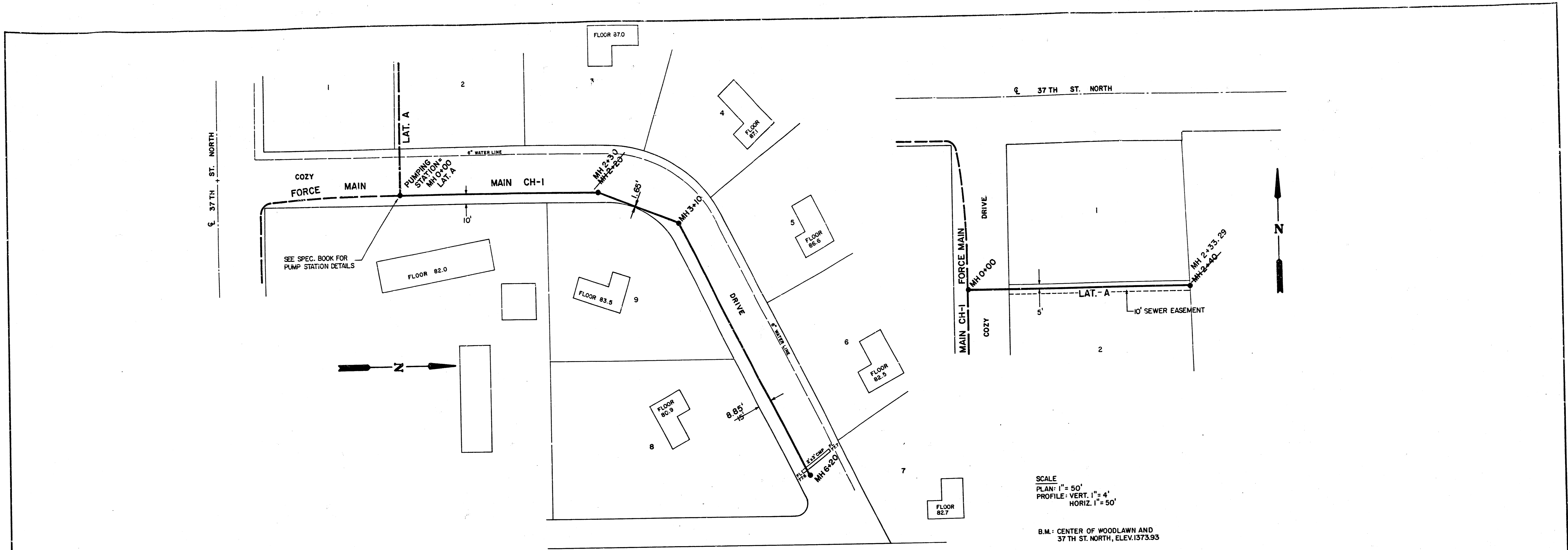
REVISED 2/10/86

SCALE NONE PROJECT NO. SE0987
DATE 1-29-88 SHEET 1 OF 6

REVISION	CHECKED BY	DESIGNED BY	PROJECT
		CG	

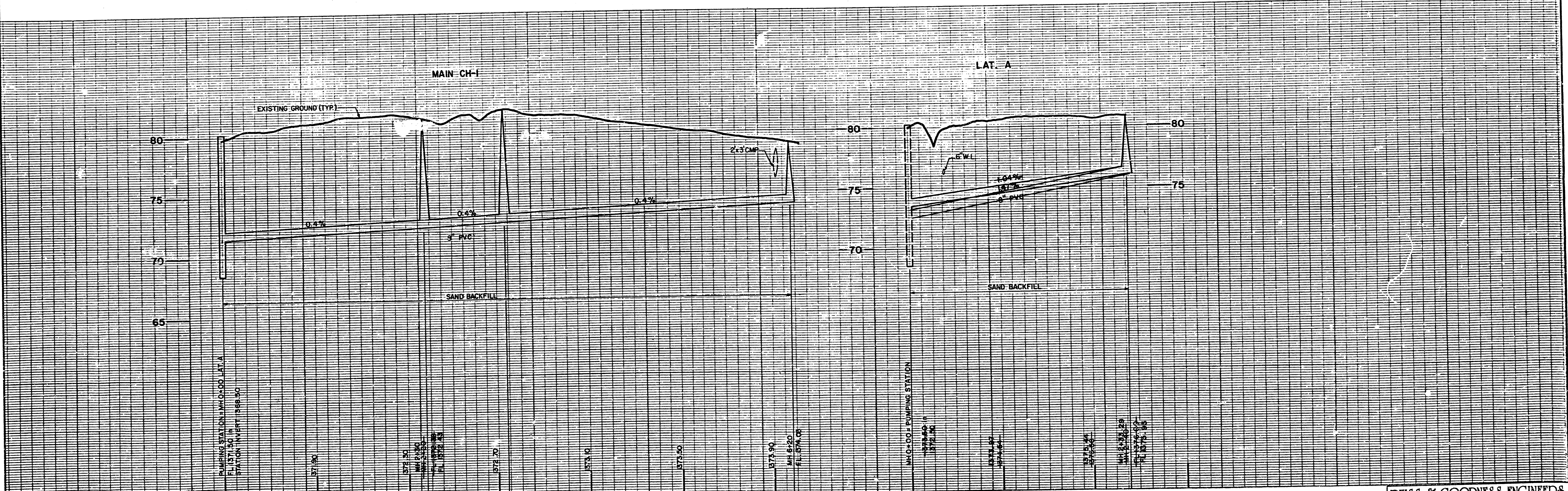
CUSTOMER

**FILMED FROM THE BEST
AVAILABLE COPY ...**



SCALE
 PLAN: 1" = 50'
 PROFILE: VERT. 1" = 4'
 HORIZ. 1" = 50'

B.M.: CENTER OF WOODLAWN AND
 37 TH ST. NORTH, ELEV. 1373.93



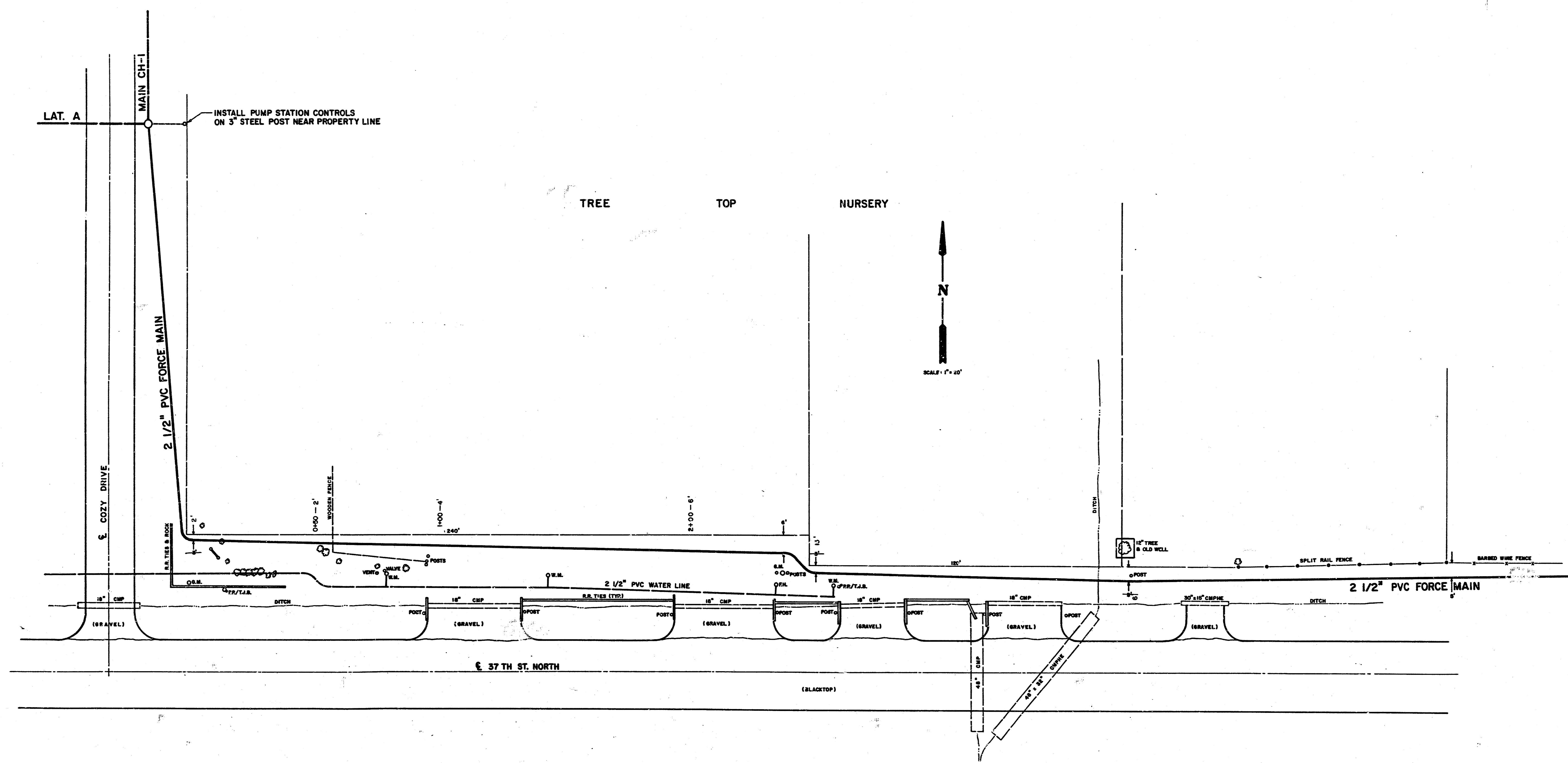
(MAIN CH-1, LAT. A)

DEISS & GOODNESS ENGINEERS
 2160 WEST 21ST STREET
 WICHITA, KANSAS 67204
 (316) 632-0215

2/4

REVISION	DRAWN BY DEJ	CHECKED BY	DESIGNED BY CE	PROJECT	CUSTOMER	SCALE NOTED	PROJECT NO. SL0997
SANITARY SEWER SYSTEM					BEL AIRE-COZY HOMES ADD.	REVISED 2/10/88	DATE 1-29-88 SHEET 2 OF 6

FILMED FROM THE BEST
 AVAILABLE COPY.....



INSTALL PUMP STATION CONTROLS ON 3" STEEL POST NEAR PROPERTY LINE

TREE TOP NURSERY



- LEGEND**
- W.M. — WATER METER
 - G.M. — GAS METER
 - P.P. — POWER POLE
 - T.J.B. — TELEPHONE JUNCTION BOX
 - F.H. — FIRE HYDRANT
 - — TREE OR BUSH

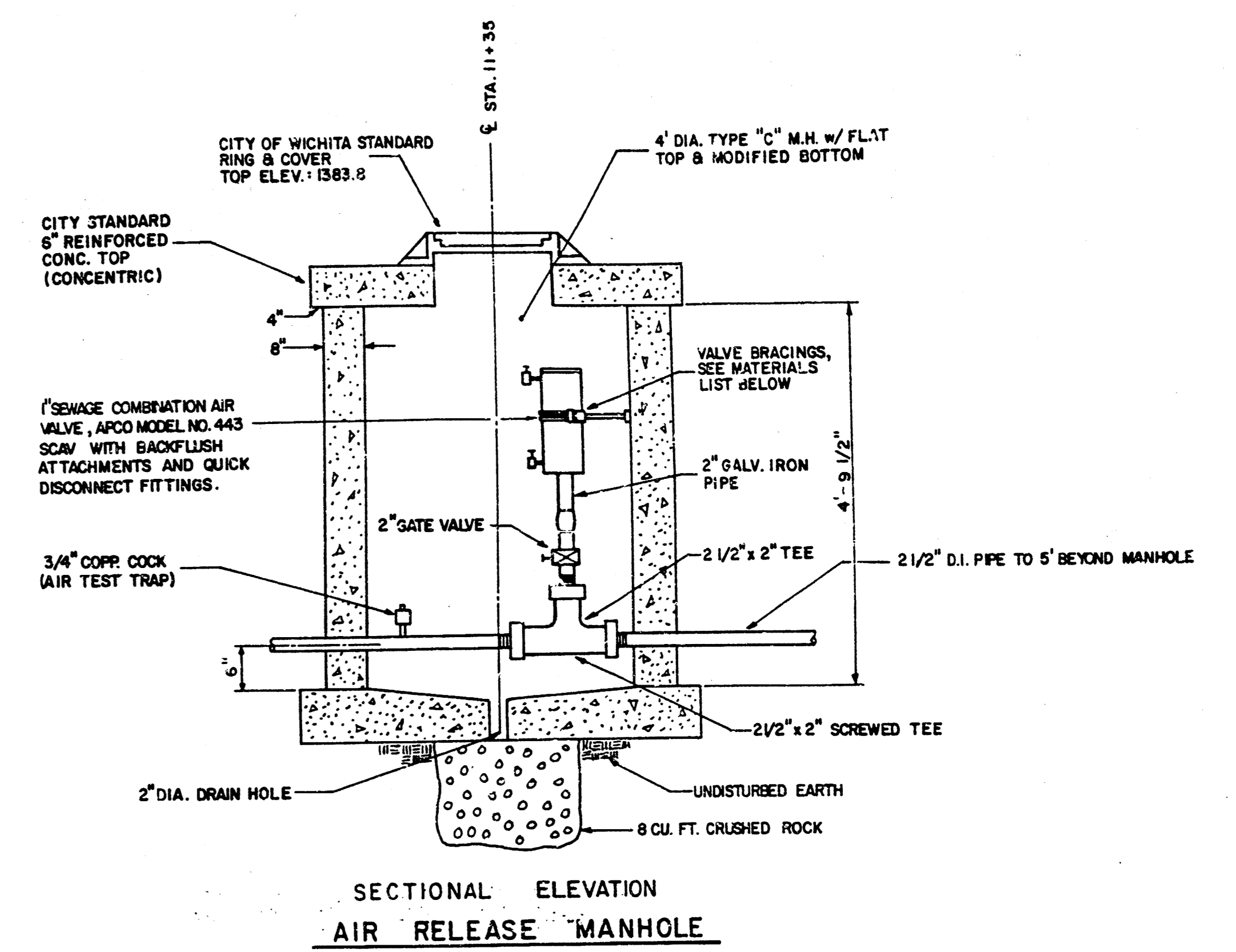
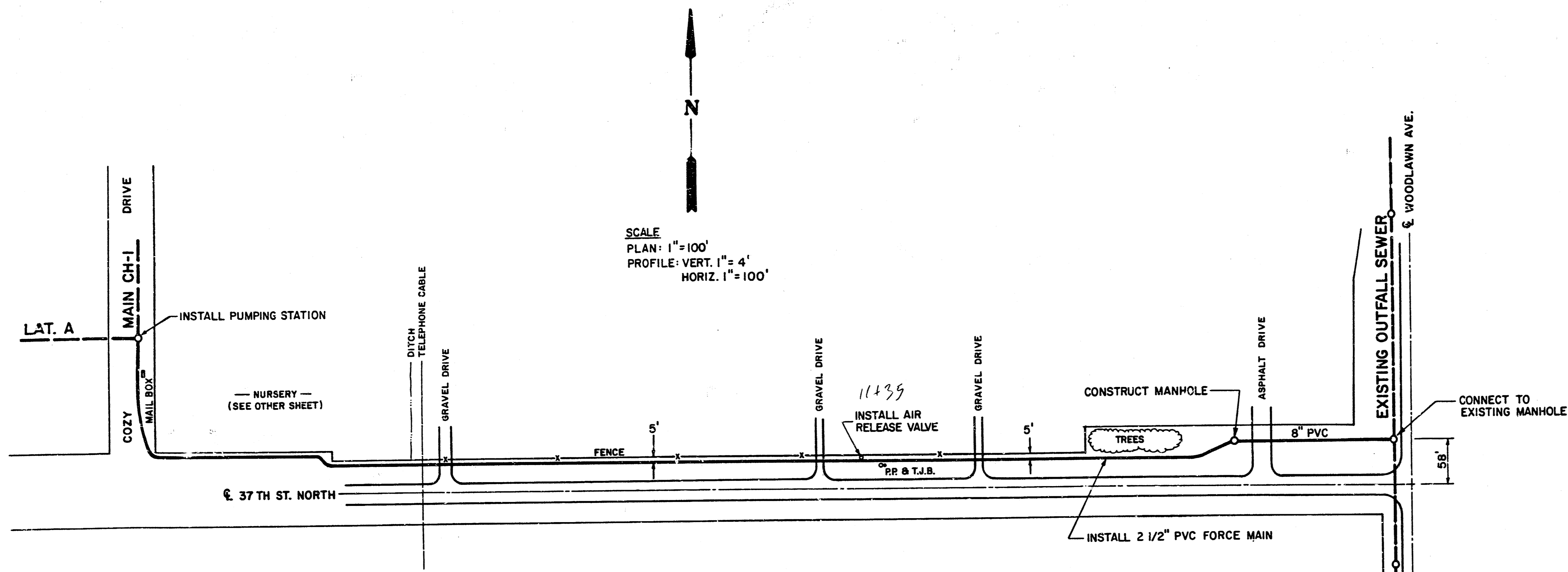
NOTE: CONTRACTOR SHALL REMOVE ALL CONSTRUCTION EQUIPMENT FROM PARKING AREA ON WEEKENDS.

DEISS & GOODNESS ENGINEERS
 2100 WEST 21ST STREET
 WICHITA, KANSAS 67203
 (316) 624-0225

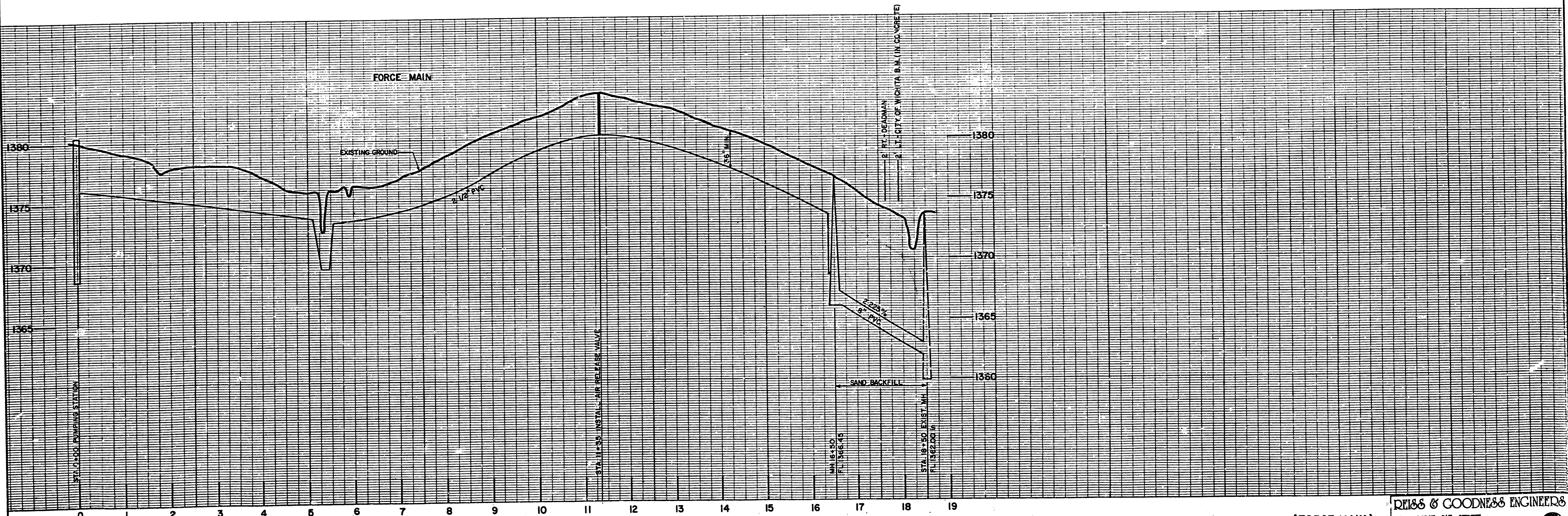
3/4

REVISION 2-10-88	DRAWN BY DEL	CHECKED BY	DESIGNED BY C G	PROJECT SANITARY SEWER SYSTEM	CUSTOMER BEL AIRE-COZY HOMES ADD.	REVISION REVISED 2/10/88	SCALE 1" = 20'	PROJECT NO. 52487
							DATE 1-29-88	SHEET 3 OF 6

FILMED FROM THE BEST AVAILABLE COPY



- VALVE BRACING MATERIALS**
- 1- DUCTILE IRON, DBL. STRAP SERVICE SADDLE, CASCO, CAT. CDS2, 3/4" T.P. TOP
 - 1- 3/4" IRON PIPE NIPPLE - LENGTH TO FIT
 - 1- MALLEABLE IRON CEILING/FLOOR FLANGE, 3/4" I.P. THREADED, ANCHOR TO CONCRETE
 - MH WALL w/4-#14 SCREWS & 1/4" x SHORT LAG. SHIELDS



(FORCE MAIN)

REISS & GOODNESS ENGINEERS
2160 WEST 21ST STREET
WICHITA, KANSAS 67204
(316) 832-0283

REVISED 2/13/88

SCALE NOTED PROJECT NO. 360987
DATE 1-29-88 SHEET 4 OF 6

SANITARY SEWER SYSTEM

CUSTOMER: **BEL AIRE-COZY HOMES ADD.**

REVISION	DRAWN BY DEJ	CHECKED BY	DESIGNED BY CG	PROJECT
----------	-----------------	------------	-------------------	---------

FILMED FROM THE BEST AVAILABLE COPY