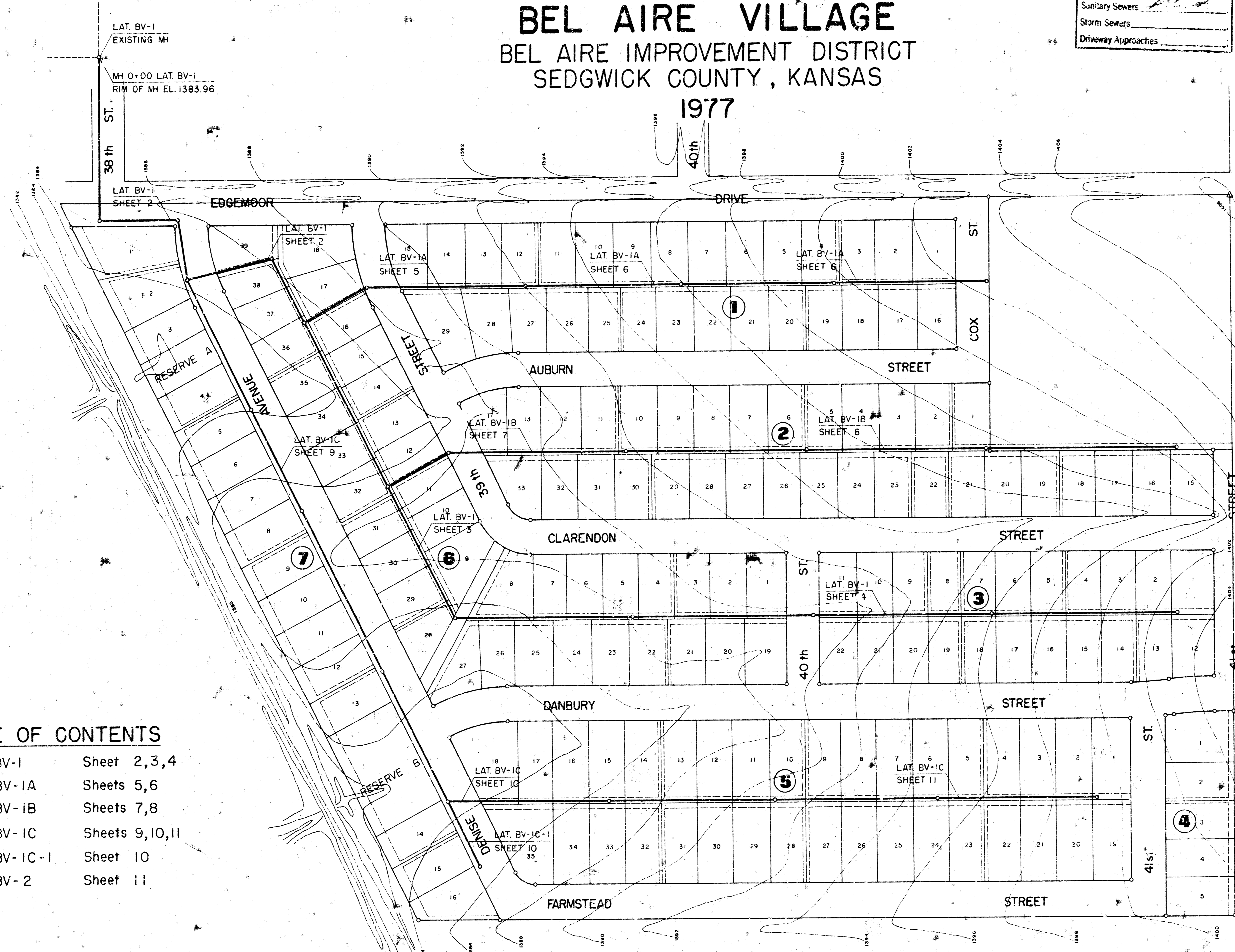


SANITARY SEWER EXTENSION BEL AIRE VILLAGE BEL AIRE IMPROVEMENT DISTRICT SEDGWICK COUNTY, KANSAS

APPROVED AS NOTED
By CITY ENGINEER OF WICHITA

Sanitary Sewers _____
Storm Sewers _____
Driveway Approaches _____

NOTE TO CONTRACTOR
This project will be constructed under the supervision of the CITY ENGINEER and conforming to the specifications of the CITY OF WICHITA. The contractor shall be responsible for all details of construction and for the protection of existing utilities.

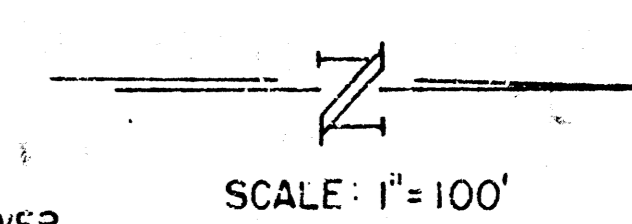


NOTE: THERE WILL BE NO SERVICE BRANCH CONNECTIONS OR SERVICE LINES INSTALLED ON THIS PROJECT.

TABLE OF CONTENTS

Lateral BV-1	Sheet 2,3,4
Lateral BV-1A	Sheets 5,6
Lateral BV-1B	Sheets 7,8
Lateral BV-1C	Sheets 9,10,11
Lateral BV-1C-1	Sheet 10
Lateral BV-2	Sheet 11

LAT. BV-2 SHEET 11
LAT. BV-2 EXISTING MH
EXISTING SANITARY SEWER

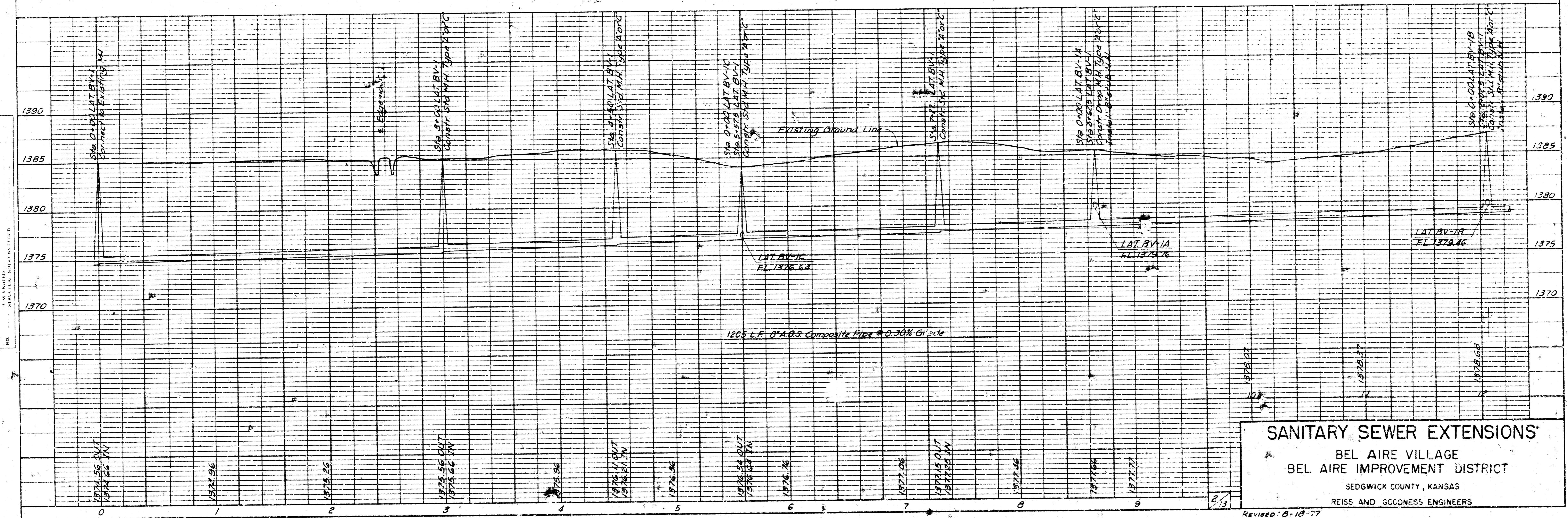
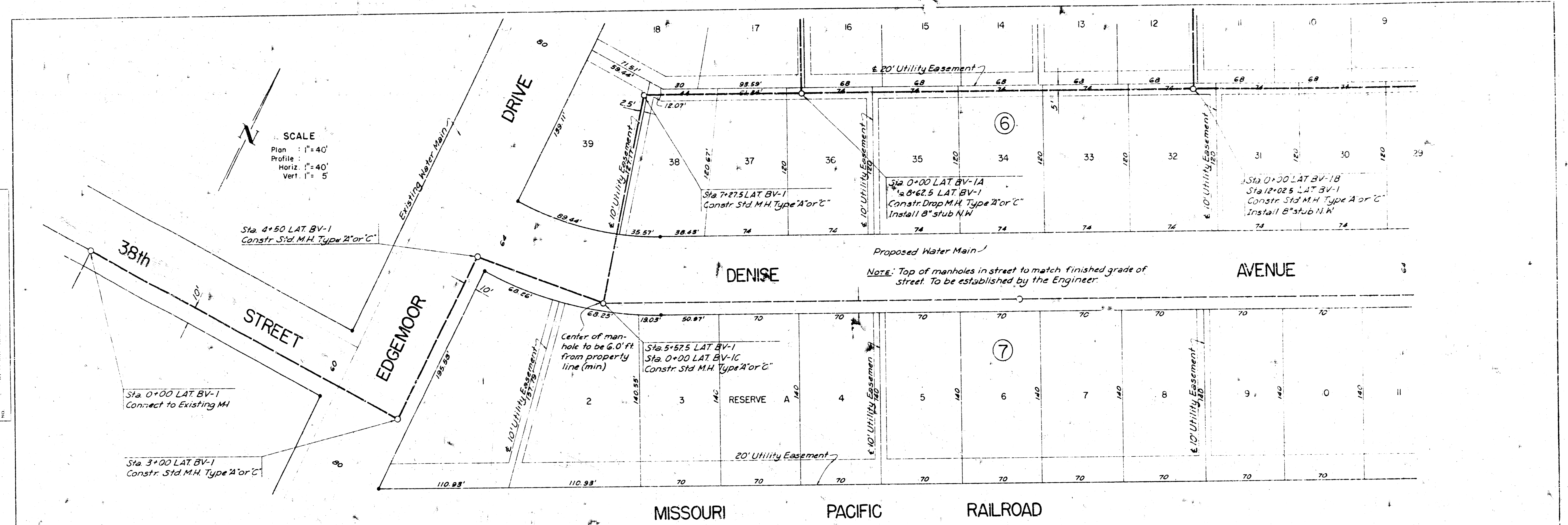


REISS & GOODNESS PROJECT NO. SE 1877
CITY OF WICHITA PROJECT NO. DBKW 707051



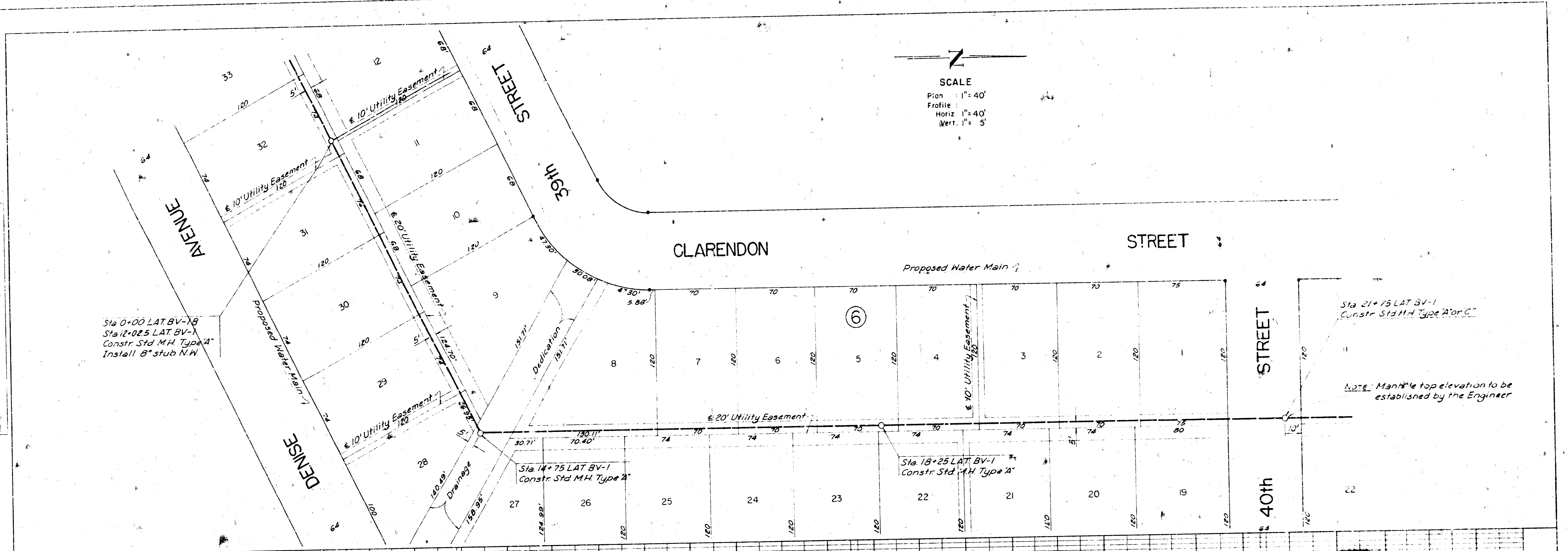
PLAN
 SURVEYED
 NOTED BOOK
 ALIGNED WITH FIELD
 REFERENCE FIELD
 NO.

PROFILE
 SURVEYED
 NOTED BOOK
 COMPARISON
 SHOWN WITH SURVEY
 NO.

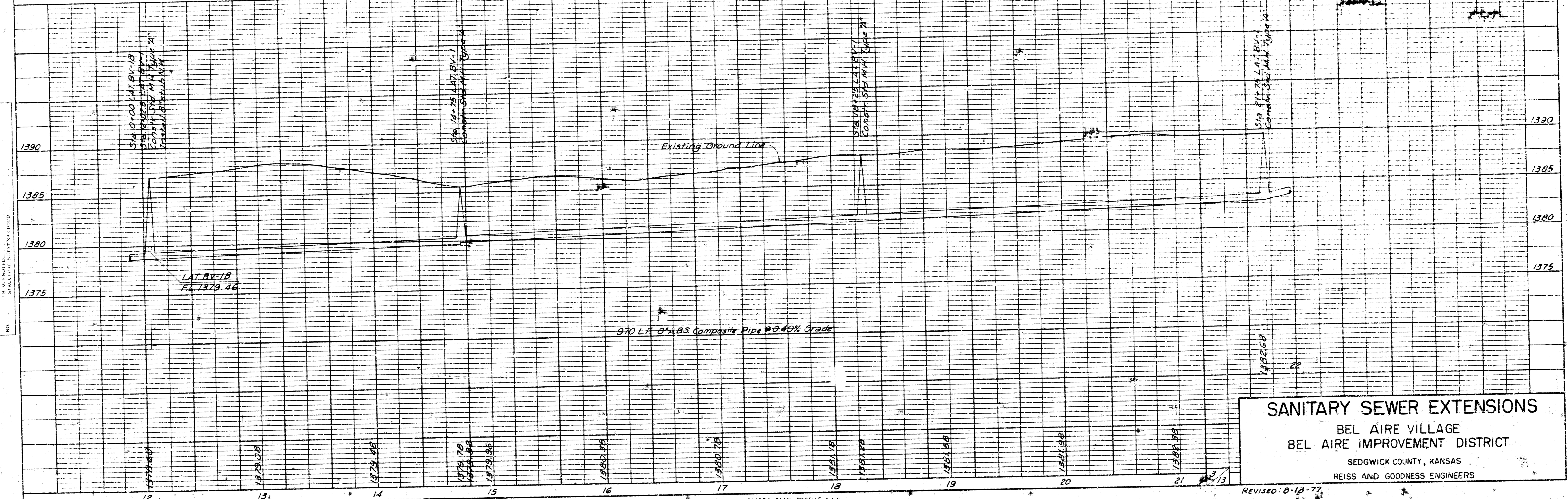


SANITARY SEWER EXTENSIONS
 BEL AIRE VILLAGE
 BEL AIRE IMPROVEMENT DISTRICT
 SEDGWICK COUNTY, KANSAS
 REISS AND GOODNESS ENGINEERS
 Revised: 8-10-77

PLAN
 SHEET NO. 1
 PROJECT NO. 100-100-100
 DATE 08-18-77



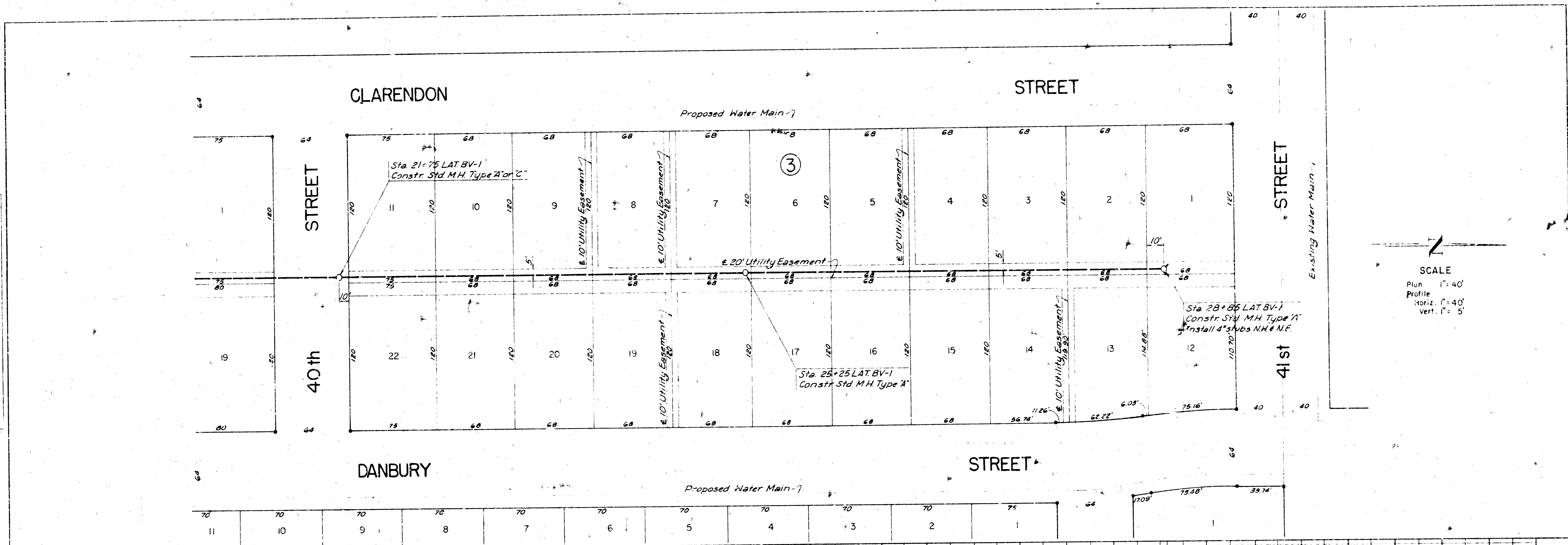
PROFILE
 SHEET NO. 1
 PROJECT NO. 100-100-100
 DATE 08-18-77



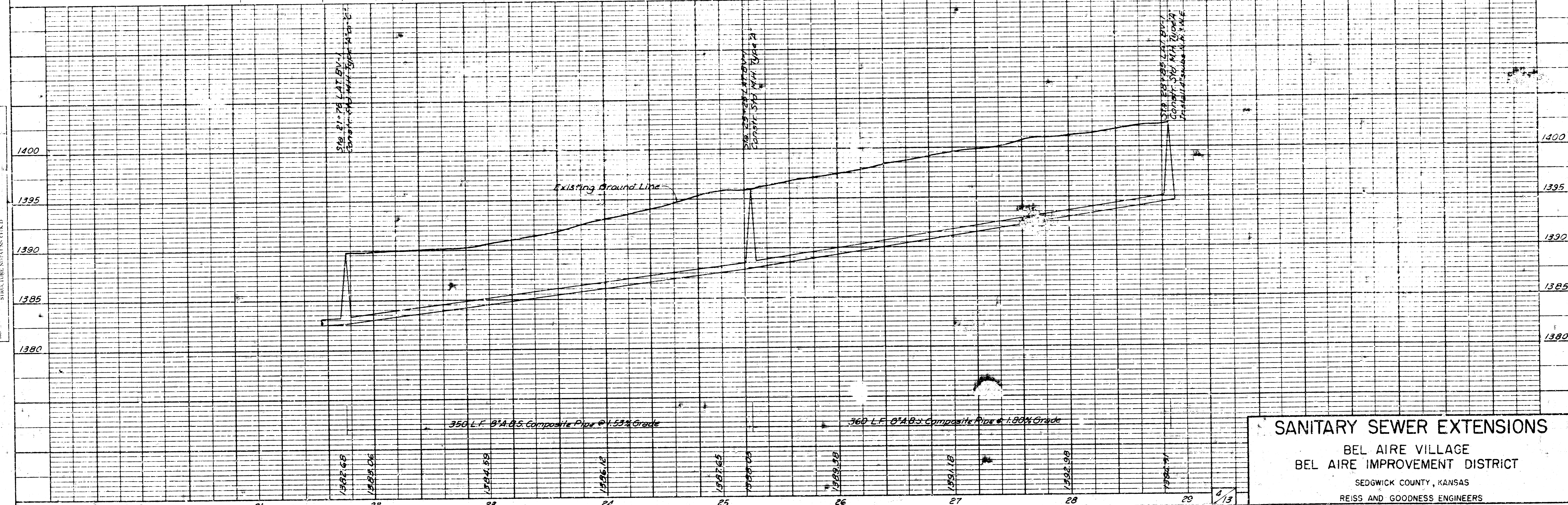
SANITARY SEWER EXTENSIONS
 BEL AIRE VILLAGE
 BEL AIRE IMPROVEMENT DISTRICT
 SEDGWICK COUNTY, KANSAS
 REISS AND GOODNESS ENGINEERS
 REVISED: 0-18-77

PLAN
 NOTED: SEE SHEET 10 FOR WATER MAIN
 NO. 10001

PROFILE
 NOTED: SEE SHEET 10 FOR WATER MAIN
 NO. 10001

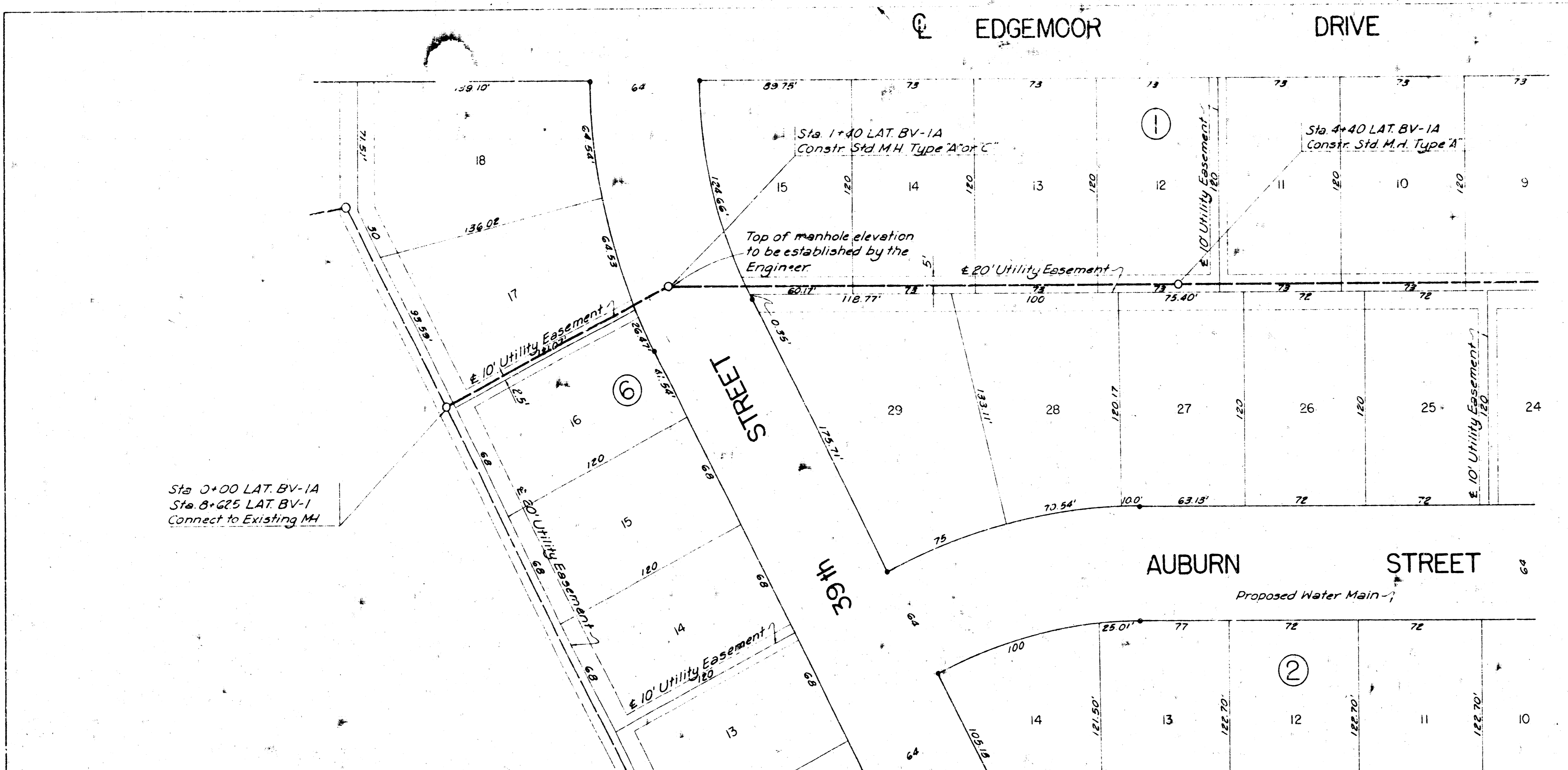


SCALE
 Plan 1" = 40'
 Profile 1" = 40'
 Vert. 1" = 5'



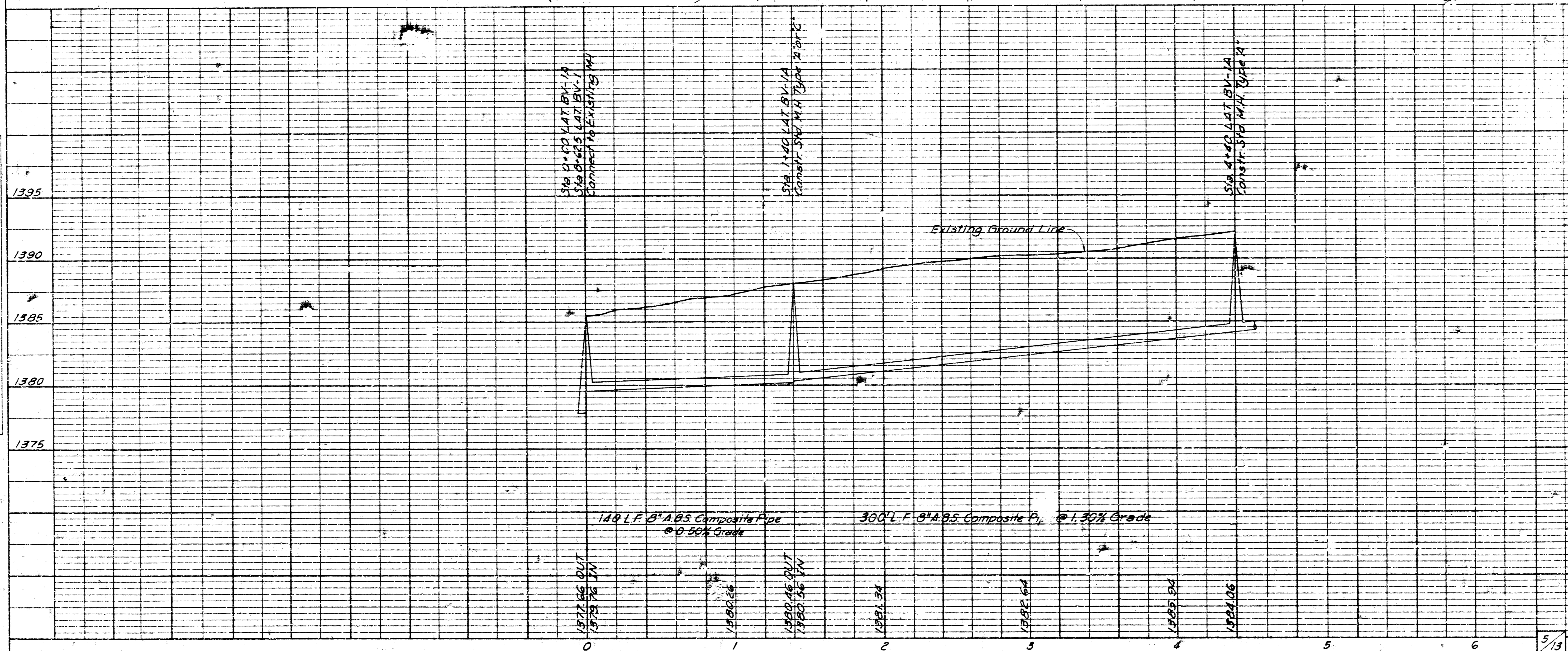
SANITARY SEWER EXTENSIONS
 BEL AIRE VILLAGE
 BEL AIRE IMPROVEMENT DISTRICT
 SEDGWICK COUNTY, KANSAS
 REISS AND GOODNESS ENGINEERS

PLAN
 DATE: 5/13/77
 BY: [Signature]
 CHECKED: [Signature]
 TITLE: SANITARY SEWER EXTENSIONS
 PROJECT: BEL AIRE VILLAGE
 SHEET NO. 1



SCALE
 Plan 1" = 40'
 Profile 1" = 40'
 Horiz 1" = 40'
 Vert 1" = 5'

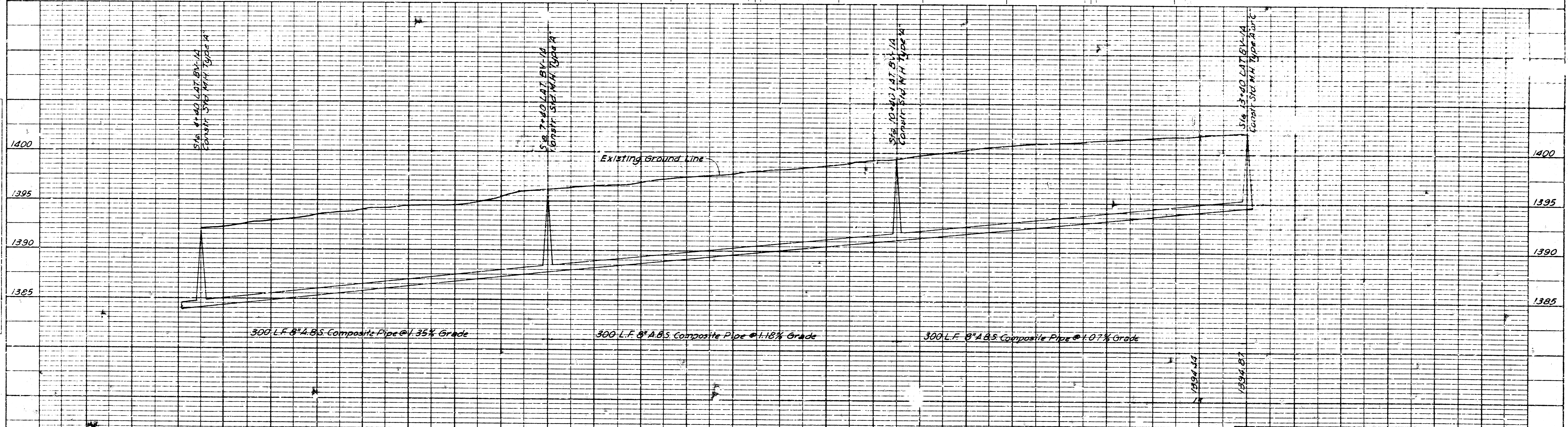
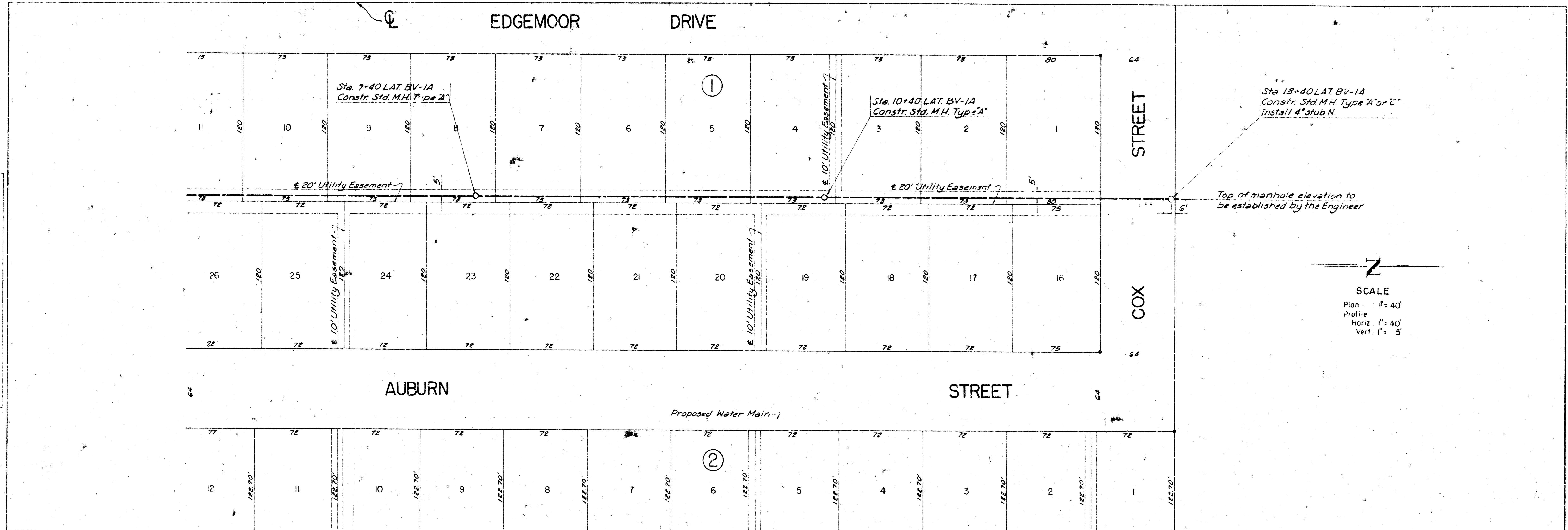
PROFILE
 DATE: 5/13/77
 BY: [Signature]
 CHECKED: [Signature]
 TITLE: SANITARY SEWER EXTENSIONS
 PROJECT: BEL AIRE VILLAGE
 SHEET NO. 1



SANITARY SEWER EXTENSIONS
 BEL AIRE VILLAGE
 BEL AIRE IMPROVEMENT DISTRICT
 SEDGWICK COUNTY, KANSAS
 REISS AND GOODNESS ENGINEERS
 Revised: 8-18-77

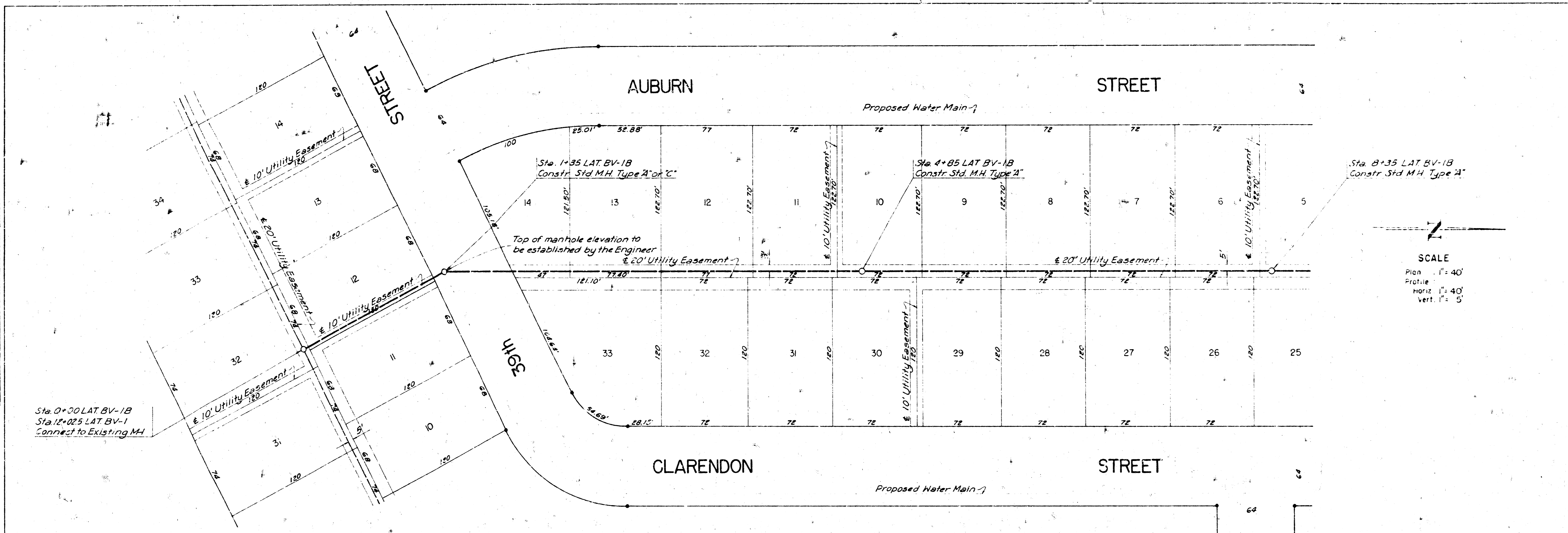
PLAN
 DRAWN BY: [blank]
 CHECKED BY: [blank]
 DATE: [blank]

PROFILE
 DRAWN BY: [blank]
 CHECKED BY: [blank]
 DATE: [blank]



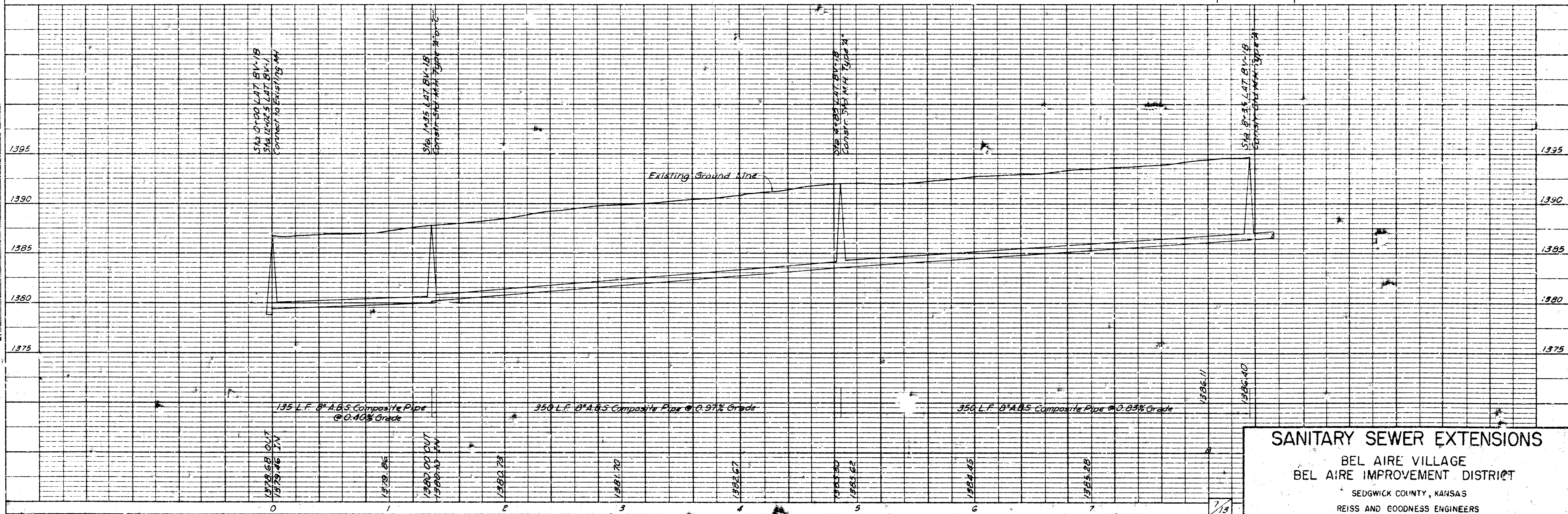
SANITARY SEWER EXTENSIONS
 BEL AIRE VILLAGE
 BEL AIRE IMPROVEMENT DISTRICT
 SEDGWICK COUNTY, KANSAS
 REISS AND GOODNESS ENGINEERS
 Revised: 8-18-77

PLAN
 SURVEYED BY
 DATE
 DRAWN BY
 CHECKED BY
 DATE



SCALE
 Plan 1" = 40'
 Profile 1" = 40'
 Horiz 1" = 40'
 Vert 1" = 5'

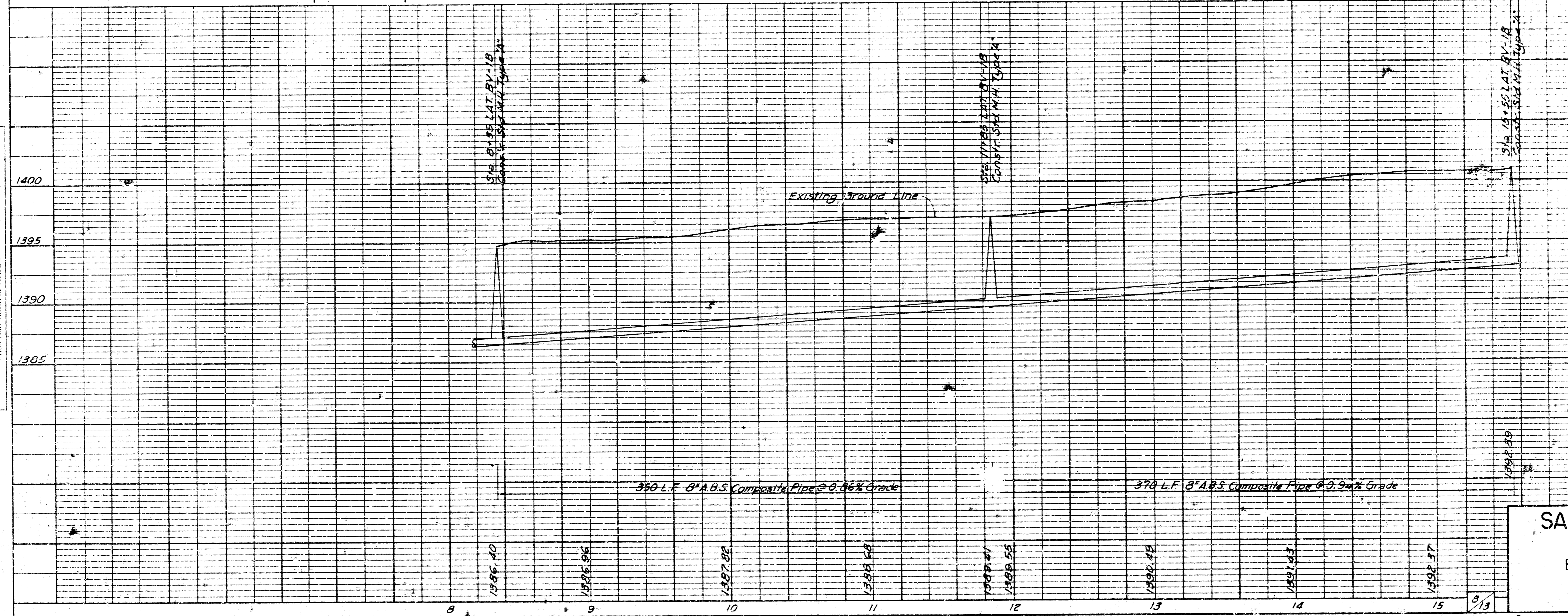
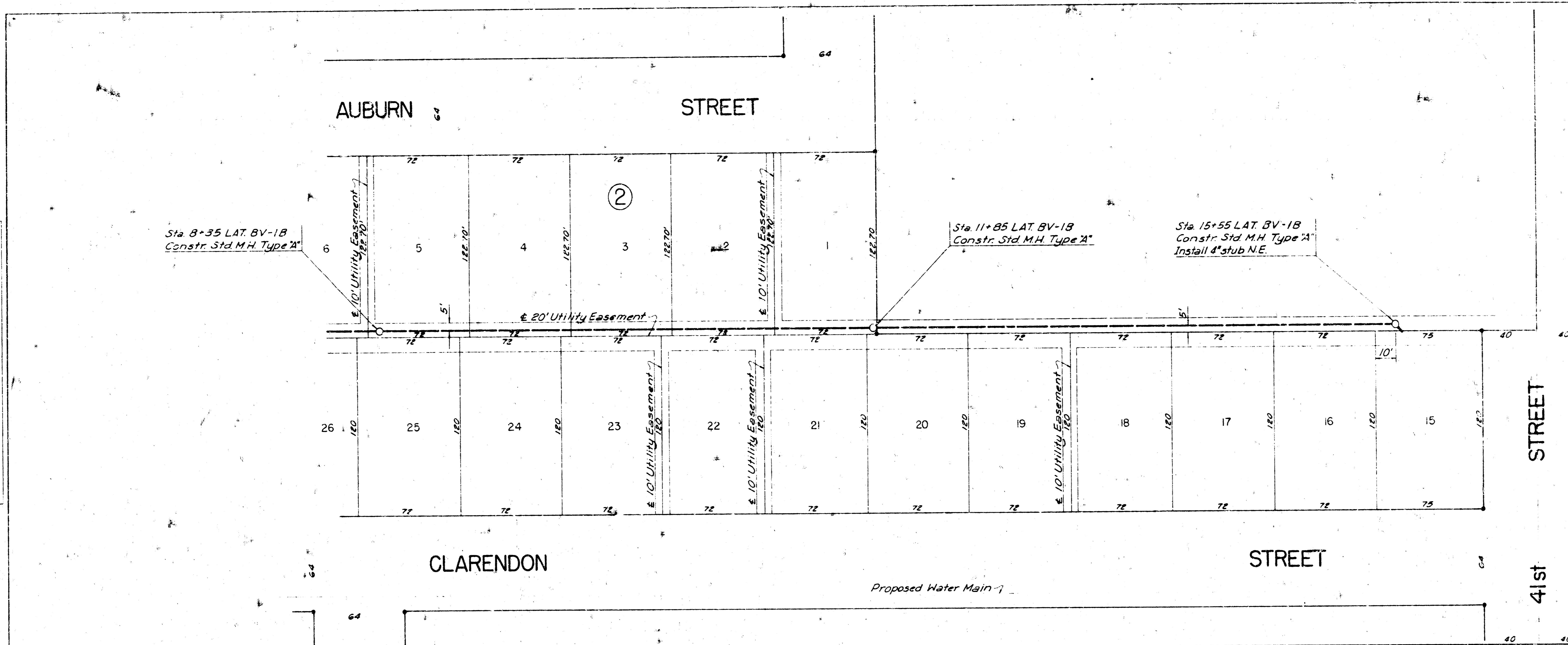
PROFILE
 SURVEYED BY
 DATE
 DRAWN BY
 CHECKED BY
 DATE



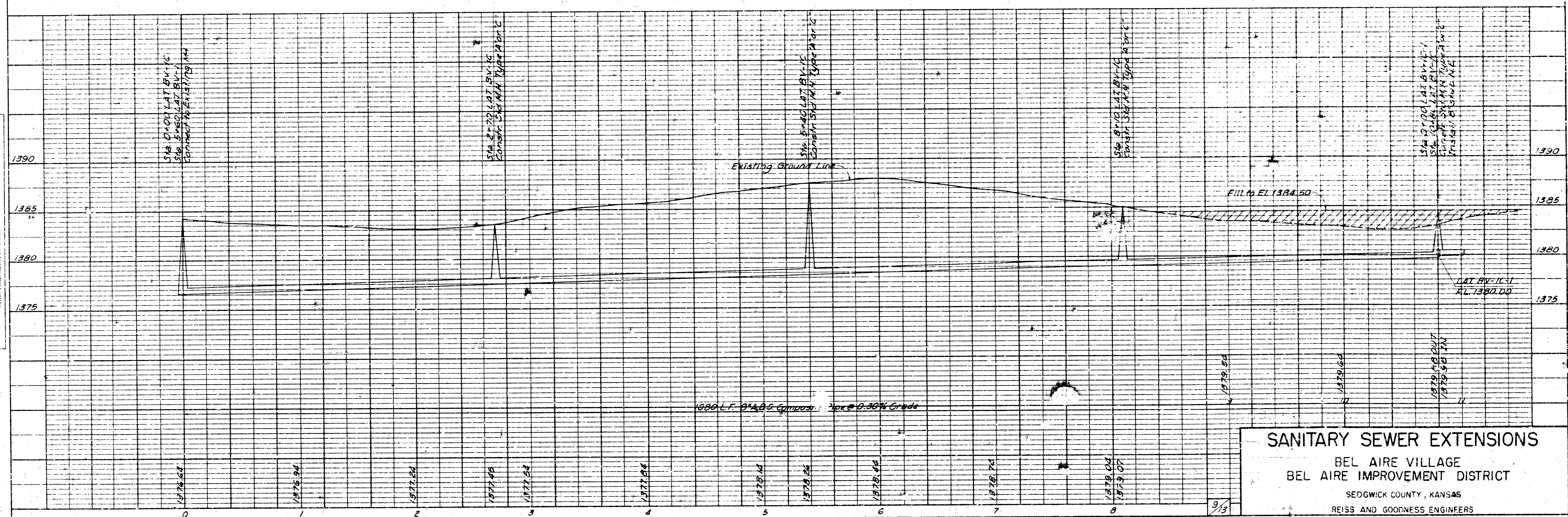
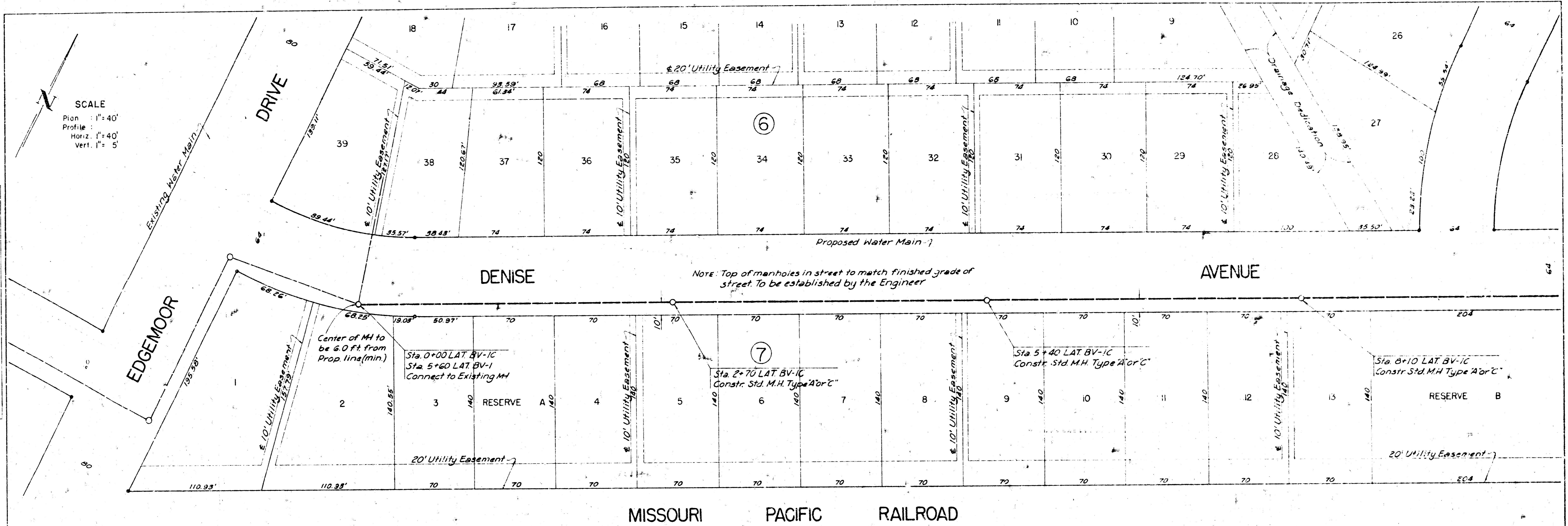
SANITARY SEWER EXTENSIONS
 BEL AIRE VILLAGE
 BEL AIRE IMPROVEMENT DISTRICT
 SEDGWICK COUNTY, KANSAS
 REISS AND GOODNESS ENGINEERS

PLAN
 SHEET NO. 1
 DATE: 8-15-77

PROFILE
 SHEET NO. 1
 DATE: 8-15-77



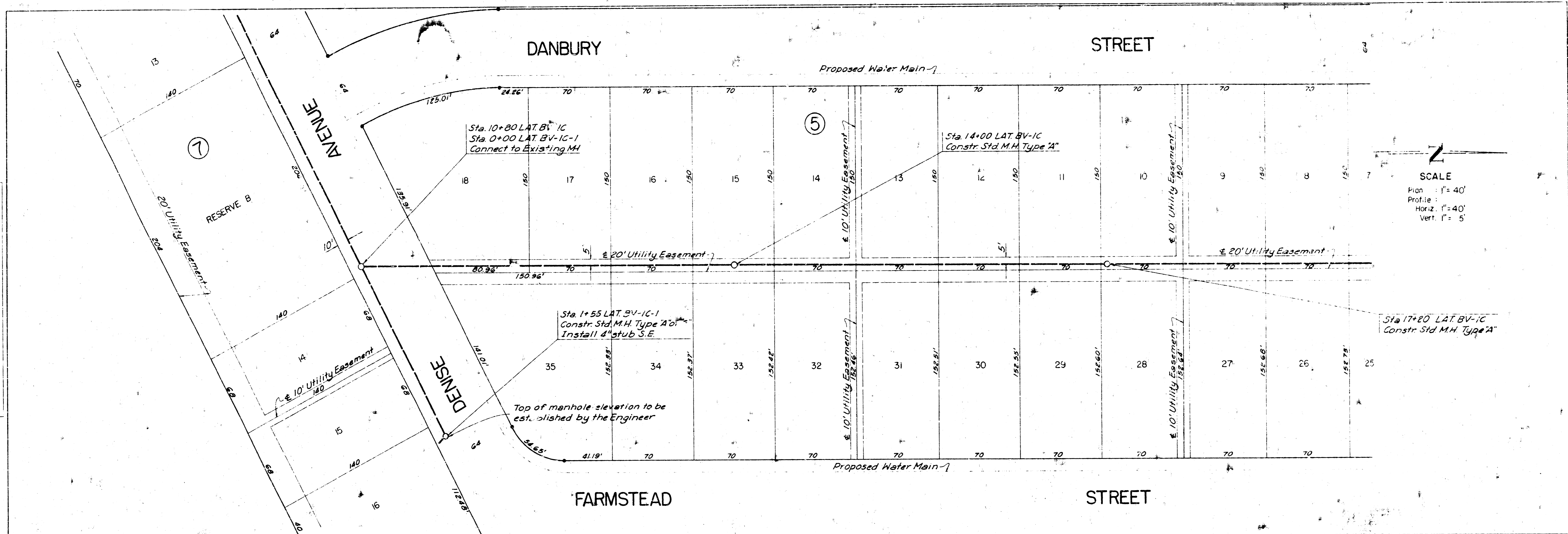
SANITARY SEWER EXTENSIONS
 BEL AIRE VILLAGE
 BEL AIRE IMPROVEMENT DISTRICT
 SEDGWICK COUNTY, KANSAS
 REISS AND GOODNESS ENGINEERS



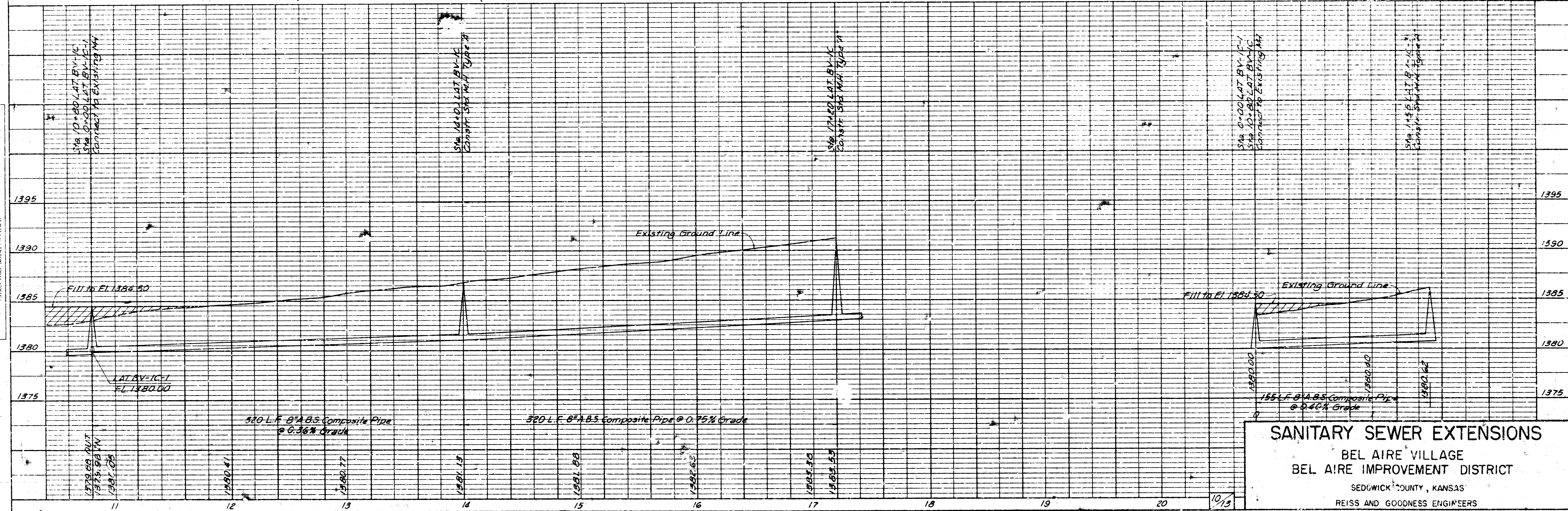
SANITARY SEWER EXTENSIONS
 BEL AIRE VILLAGE
 BEL AIRE IMPROVEMENT DISTRICT
 SEDGWICK COUNTY, KANSAS
 REISS AND GOODNESS ENGINEERS

Revised: 5-18-77

PLAN
 SHEET NO. 10
 DATE: 10/13/77
 DRAWN BY: J. W. HARRIS
 CHECKED BY: R. W. HARRIS



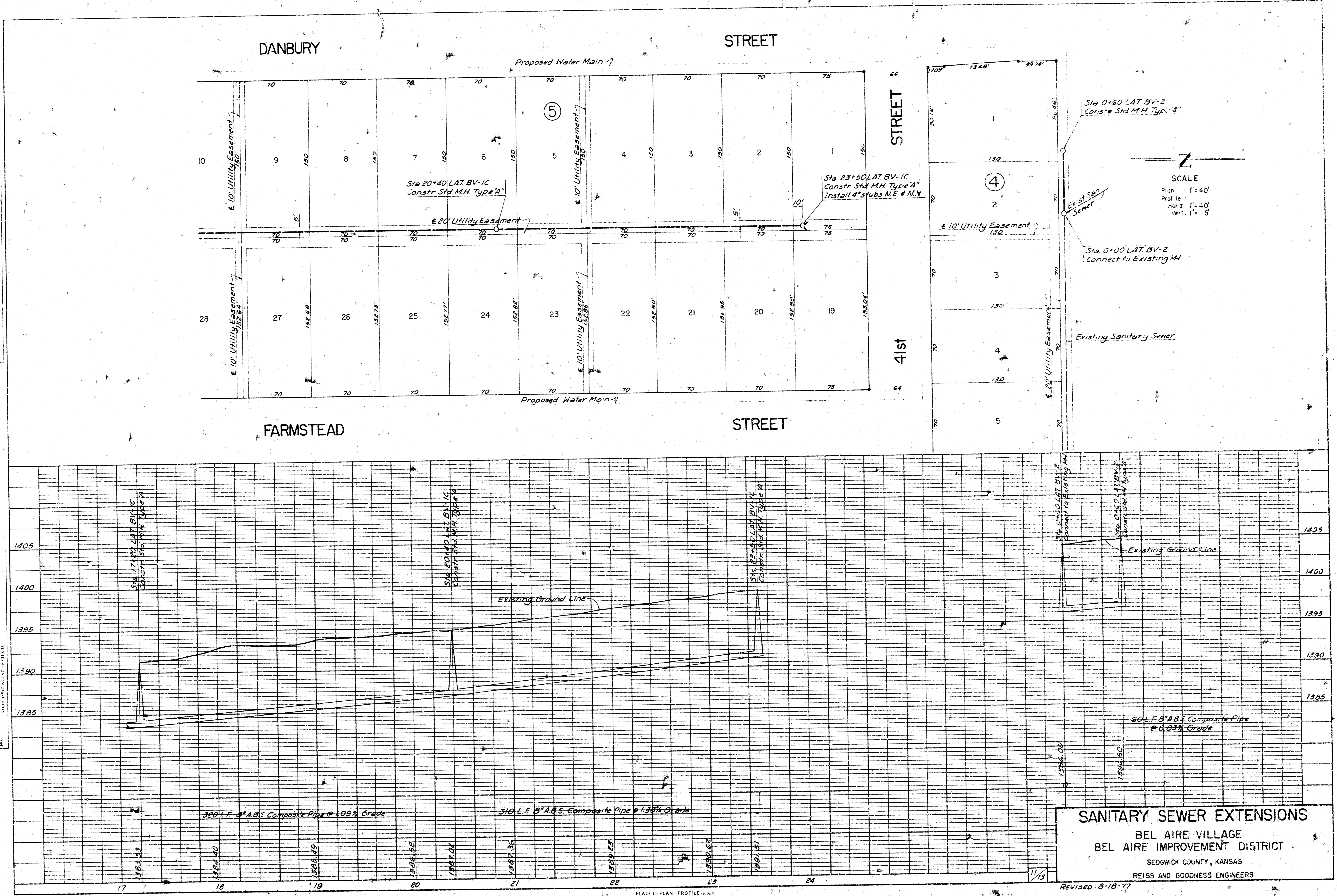
PROFILE
 SHEET NO. 11
 DATE: 10/13/77
 DRAWN BY: J. W. HARRIS
 CHECKED BY: R. W. HARRIS



SANITARY SEWER EXTENSIONS
 BEL AIRE VILLAGE
 BEL AIRE IMPROVEMENT DISTRICT
 SEDGWICK COUNTY, KANSAS
 REISS AND GOODNESS ENGINEERS
 Revised: 8-8-77

PLAN
 SHOWN
 NOT TO SCALE
 SEE REVISIONS
 NO.

PROFILE
 SHOWN
 NOT TO SCALE
 SEE REVISIONS
 NO.



SANITARY SEWER EXTENSIONS
 BEL AIRE VILLAGE
 BEL AIRE IMPROVEMENT DISTRICT
 SEDGWICK COUNTY, KANSAS
 REISS AND GOODNESS ENGINEERS