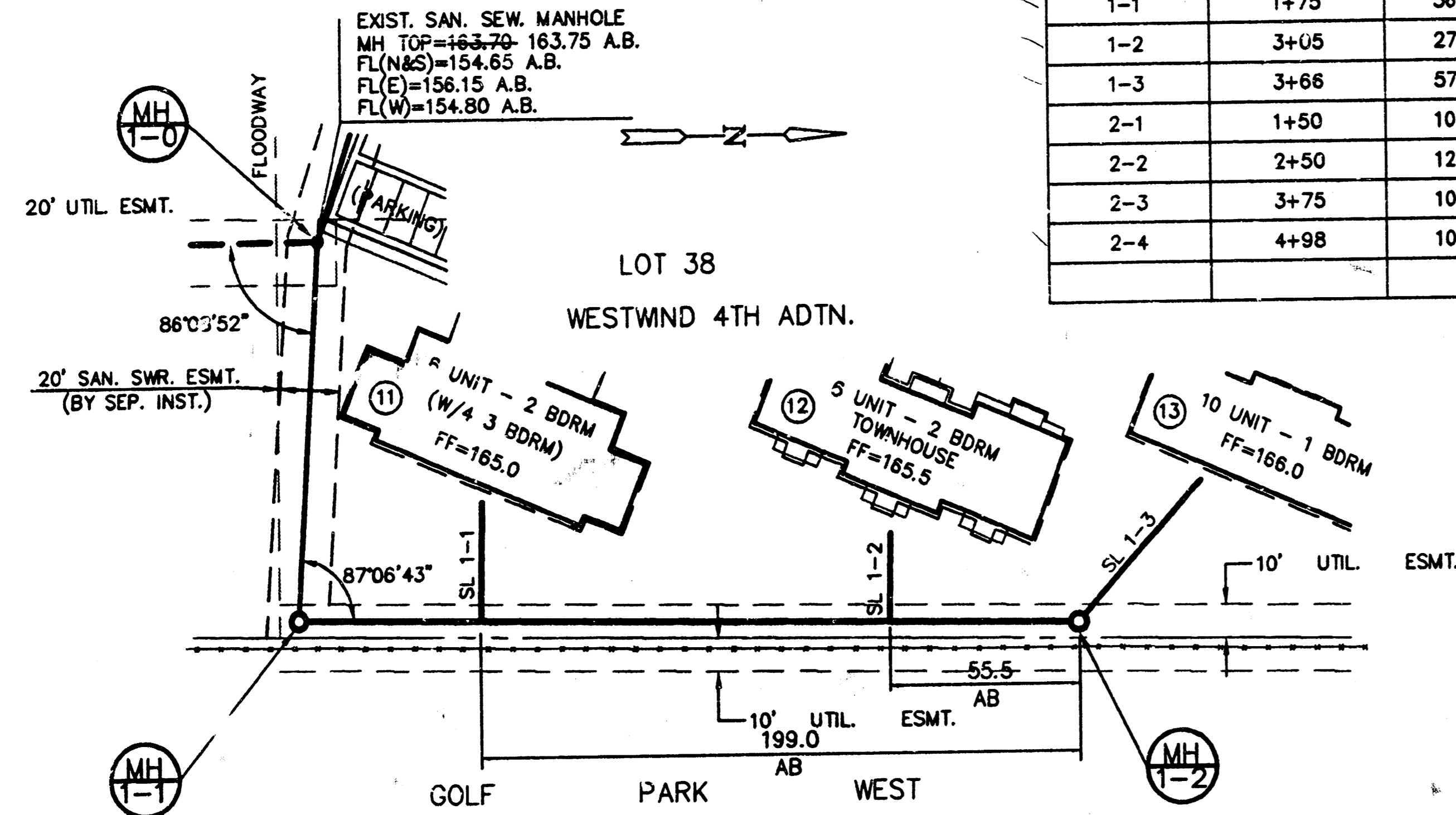


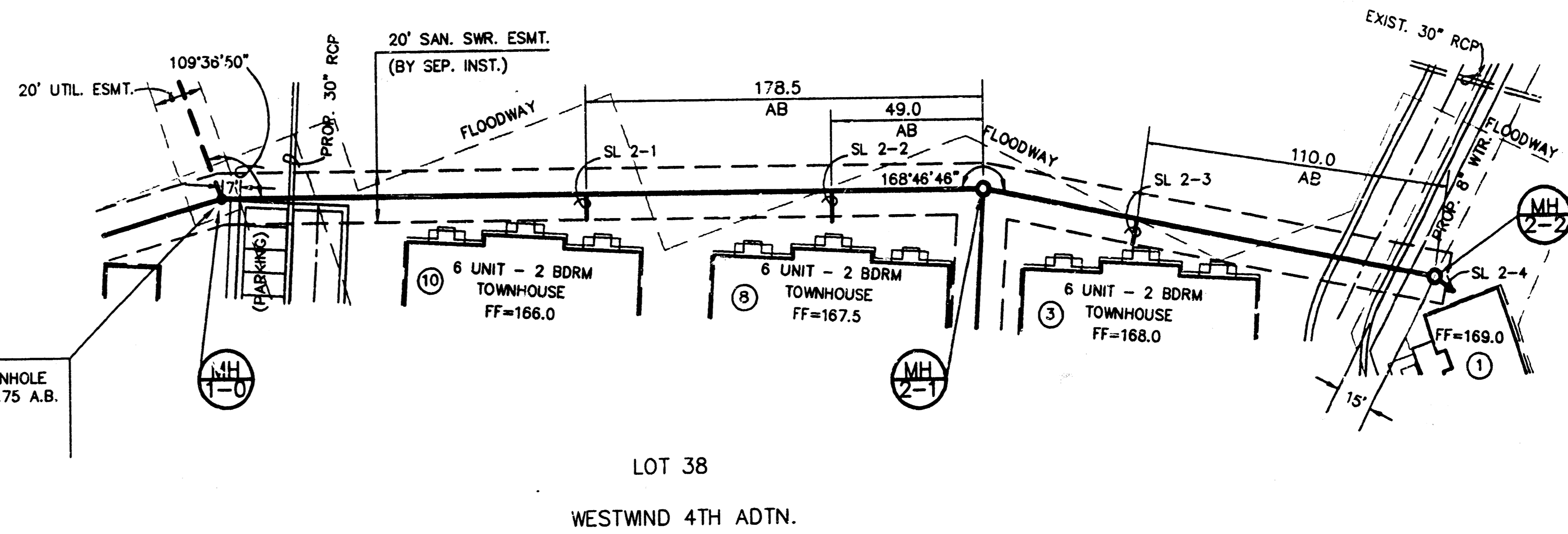
4" SERVICE LINE CONNECTIONS

SERVICE LINE NO.	SEWER MAIN STATION	LENGTH	SLOPE	FLOWLINE ELEV.	
				UPSTREAM	DOWNSTREAM
1-1	1+75	36	2%	158.96	157.24
1-2	3+05	27	2%	159.30	157.76
1-3	3+66	57	2%	159.47	158.33
2-1	1+50	10	5%	157.95	156.45
2-2	2+50	12	5%	158.85	157.25
2-3	3+75	10	5%	160.51	159.01
2-4	4+98	10	5%	162.30	161.80



PLAN - LINE 1

SCALE: 1"=40'



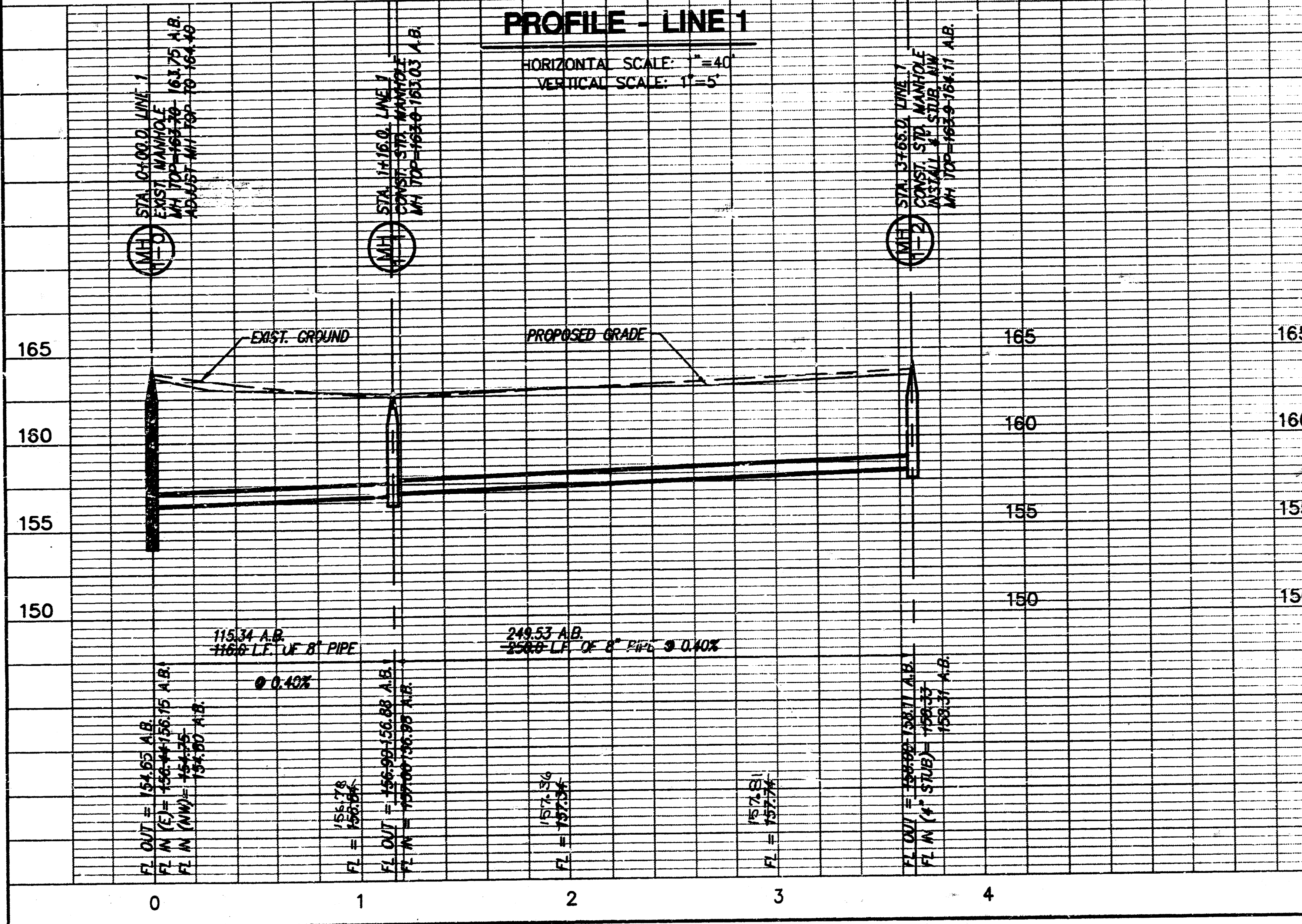
PLAN - LINE 2

SCALE: 1"=40'

AS BUILT 5-10-93

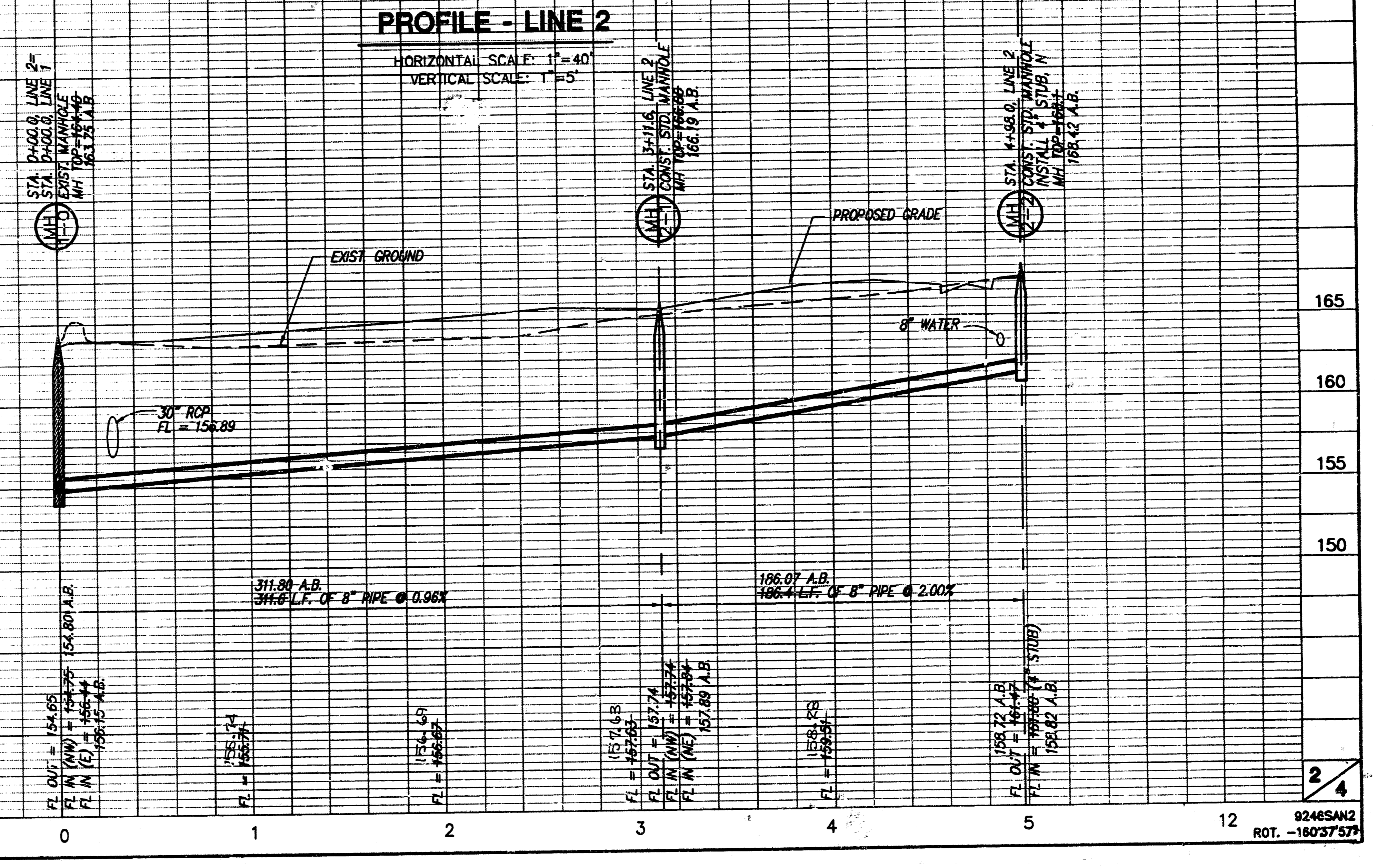
PROFILE - LINE 1

HORIZONTAL SCALE: 1"=40'
VERTICAL SCALE: 1"=5'



PROFILE - LINE 2

HORIZONTAL SCALE: 1"=40'
VERTICAL SCALE: 1"=5'



PRIVATE
SANITARY SEWER PLANS FOR
BERKSHIRE III
APARTMENT COMPLEX
INDEX NO. 607861
USER CODE 373PPS

CITY OF WICHITA, KANSAS
MICHAEL E. LINDEBAK, CITY ENGINEER

APPROVED AS NOTED
BY CITY ENGINEER OF WICHITA

SANITARY SEWERS _____
STORM SEWERS _____
DRIVEWAY APPROACHED _____
WATER MAINS _____
PAVING _____

GENERAL NOTES

1. THE CONTRACTOR SHALL BE RESPONSIBLE FOR PRESERVING PROPERTY IRONS. THE CONTRACTOR WILL BE REQUIRED TO RE-ESTABLISH ANY PROPERTY IRONS WHICH ARE DAMAGED OR DESTROYED BY HIS CONSTRUCTION OPERATIONS. SUCH IRONS SHALL BE RE-ESTABLISHED BY A LICENSED LAND SURVEYOR IN ACCORDANCE WITH STATE LAWS.
2. EXISTING UTILITIES AND THEIR LOCATIONS, AS SHOWN ON THE PLANS REPRESENT THE BEST INFORMATION OBTAINABLE FOR DESIGN. LOCATION INFORMATION HAS BEEN OBTAINED FROM THE VARIOUS UTILITY COMPANIES AND IS EITHER FROM COMPANY RECORD DRAWINGS OR COMPANY PROVIDED FIELD LOCATIONS. THE PLAN LOCATIONS SHOWN ARE NOT GUARANTEED. ADDITIONAL EXISTING UTILITIES MAY ALSO BE ENCOUNTERED.
3. CONTRACTOR WILL BE REQUIRED TO PROVIDE A MINIMUM ADVANCE NOTICE OF FOUR (4) HOURS TO UTILITY COMPANIES PRIOR TO STARTING AN EXCAVATION AS FOLLOWS:

KANSAS ONE-CALL 1-800-344-7233
or 687-2470 (LOCAL WICHITA)

THE CONTRACTOR MUST NOTIFY THE FOLLOWING IN CASE OF AN EMERGENCY:

SOUTHWESTERN BELL TELEPHONE COMPANY	1-571-2115
CABLEVISION	282-0661
KC&E (GAS DIST.)	832-0012
KC&E (ELECTRIC)	264-1141
ARKLA GAS COMPANY	942-8350 OR 263-8161
CITY OF WICHITA WATER & SEWER DEPARTMENT	268-4908

4. RUBBLE FROM THE REMOVAL OF MISCELLANEOUS STRUCTURES AND EXCESS EXCAVATION WHICH IS TO BE WASTED SHALL BE DISPOSED OF ON SITES TO BE PROVIDED BY THE CONTRACTOR. THESE SITES SHALL BE APPROVED BY THE ENGINEER AS TO SUITABILITY, APPEARANCE AND SITE LOCATION. LOCATIONS THAT, IN THE OPINION OF THE ENGINEER, WILL LEAVE AN UNSIGHTLY APPEARANCE WILL NOT BE APPROVED. ALL DISPOSAL SITES MUST BE APPROVED BY THE KANSAS DEPARTMENT OF HEALTH AND ENVIRONMENT. MATERIAL EITHER STOCKPILED OR DISPOSED OF IN A FLOOD PLAIN WOULD REQUIRE A KANSAS STATE BOARD OF AGRICULTURE PERMIT. ANY MATERIAL DUMPED IN WATERS OF THE UNITED STATES OR WETLANDS IS SUBJECT TO U.S. CORPS OF ENGINEERS PERMITTING REGULATIONS. ANY MATERIAL BURIED OR STOCKPILED BEYOND APPROVED CONSTRUCTION LIMITS WOULD REQUIRE ADDITIONAL ARCHAEOLOGICAL INVESTIGATIONS UNLESS BURIED IN A PREVIOUSLY APPROVED BORROW LOCATION.
5. COST OF EXCAVATION, HAULING, AND DUMPING OF EXCESS EXCAVATION SHALL BE SUBSIDIARY TO THE PROJECT.
6. A PORTION OF EXCESS EXCAVATED MATERIAL SHALL BE MOUNDING AROUND MANHOLES WHICH EXTEND MORE THAN ONE (1) FOOT ABOVE THE EXISTING GROUND. SUCH MOUNDS SHALL BE CONSTRUCTED WITH A SIX (6) FOOT DIAMETER FLAT TOP WITH 4 TO 1 SIDE SLOPES DOWN TO THE ORIGINAL GROUND. THE ELEVATION OF THE FLAT TOP OF THE MOUND SHALL BE 0.4 FOOT BELOW THE TOP OF THE MANHOLE.
7. ALL STUBS AND PLUGGED PIPES SHALL BE LOCATED WITH GREEN PLASTIC TAPE IN THE SAME MANNER AS RISERS.
8. PRIOR TO LAYING SEWER LINES USING EXISTING STUBS IN EXISTING MANHOLES, THE CONTRACTOR SHALL EXPOSE AND VERIFY THE ELEVATION, GRADE AND ALIGNMENT OF EXISTING STUBS AND NOTIFY THE ENGINEER OF ANY DEVIATION FROM THE PLAN. WHERE CONNECTION TO AN EXISTING MANHOLE THAT DOES NOT HAVE AN EXISTING STUB OR THE STUB IS UNUSABLE DUE TO ELEVATION GRADE OR ALIGNMENT, THE CONTRACTOR SHALL RESHAPE THE EXISTING MANHOLE INVERT TO PROVIDE SMOOTH FLOW. THE COST OF RESHAPING EXISTING MANHOLE INVERTS IS INCIDENTAL TO THE PROJECT.
9. TREES AND SHRUBS IN PUBLIC RIGHT-OF-WAY WHICH ARE IN DIRECT CONFLICT WITH PROPOSED NEW CONSTRUCTION SHALL BE REMOVED BY THE CONTRACTOR WITH THE ENGINEER'S APPROVAL. TREES AND SHRUBS WHICH ARE NOT IN DIRECT CONFLICT WITH PROPOSED NEW CONSTRUCTION SHALL BE SAVED AND PROTECTED FROM DAMAGE.
10. CONTRACTOR SHALL FINAL GRADE EASEMENTS ACCORDING TO THE PROPOSED PROFILE INDICATED IN THESE PLANS.
11. THIS PROJECT IS AN EXTENSION TO THE CITY OF WICHITA METROPOLITAN AREA SANITARY SEWER SYSTEM. PLANS AND SPECIFICATIONS CONFORM TO THE REQUIREMENTS OF THE CITY OF WICHITA. IF THESE PLANS OR SPECIFICATIONS CONFLICT WITH CITY OF WICHITA SPECIFICATIONS, CITY OF WICHITA SPECIFICATIONS WILL PREVAIL. CONSTRUCTION DETAILS NOT INCLUDED WILL BE AS PUBLISHED IN THE CITY OF WICHITA STANDARD SPECIFICATIONS.
12. THE 4" SERVICE LINES ARE TO BE PRIVATELY OWNED AND MAINTAINED BY THE DEVELOPER. INSTALLATION OF SERVICE LINES TO FOLLOW REQUIREMENTS OF THE CITY OF WICHITA PLUMBING CODE AND THE INSPECTOR IS TO OBTAIN SUFFICIENT AS BUILT DIMENSIONS TO PROVIDE "BOOKING INFORMATION" TO THE CITY OF WICHITA.

NOTE TO CONTRACTOR

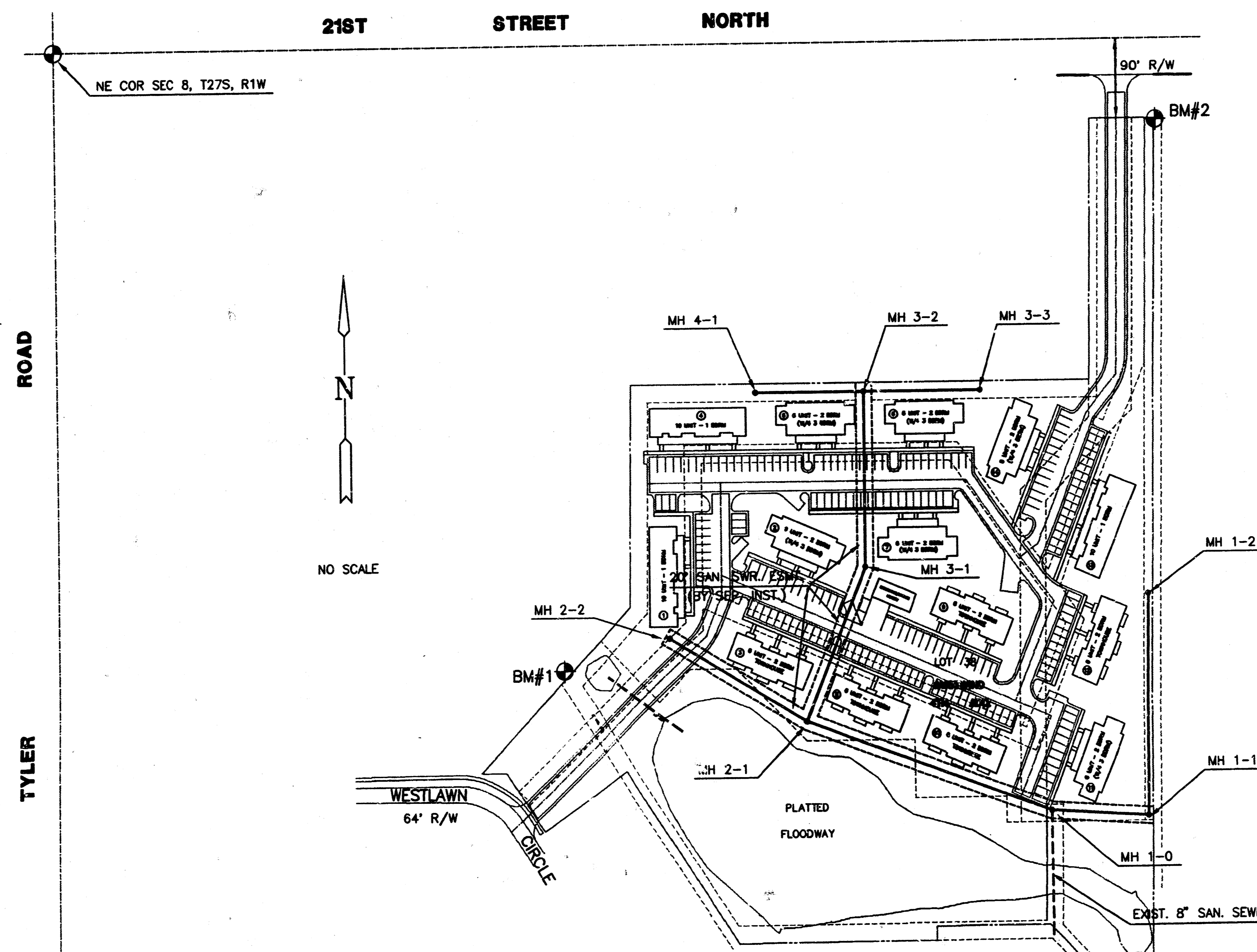
INSPECTION AND TESTING FOR THIS PROJECT IS TO BE PROVIDED BY A LICENSED CONSULTING ENGINEERING FIRM UNDER CONTRACT WITH THE OWNER/DEVELOPER. SAID INSPECTION TO BE IN ACCORDANCE WITH THE CITY OF WICHITA STANDARD CONSTRUCTION ENGINEERING PRACTICES AND CERTIFIED BY A LICENSED PROFESSIONAL ENGINEER. NO WORK SHALL BE PERFORMED IN DEDICATED EASEMENTS OR THE PUBLIC RIGHT-OF-WAY BY THE CONTRACTOR WITHOUT SUCH INSPECTION NOR SHALL ANY WORK BE COMMENCED IN DEDICATED EASEMENTS OR PUBLIC RIGHT-OF-WAY WITHOUT WRITTEN AUTHORIZATION BY THE CITY ENGINEER.

INDEX TO DRAWINGS

SHEET NO.	DESCRIPTION
1	TITLE SHEET
2	LINE 1 & LINE 2
3	LINE 3 & LINE 4
4	MANHOLE DETAILS

BENCHMARKS

- BM #1 PK NAIL SET IN S. EDGE OF MANHOLE 114' N. & 90' E. OF THE S.W. COR. OF LOT 38, WESTWIND 4TH ADDITION.
ELEV. = 168.15 CITY DATUM
- BM #2 RR SPIKE SET IN S. SIDE OF POWER POLE 60' S. OF CL 21ST ST. NO. AT THE N.E. COR. OF LOT 38, WESTWIND 4TH ADDITION.
ELEV. = 168.89 CITY DATUM

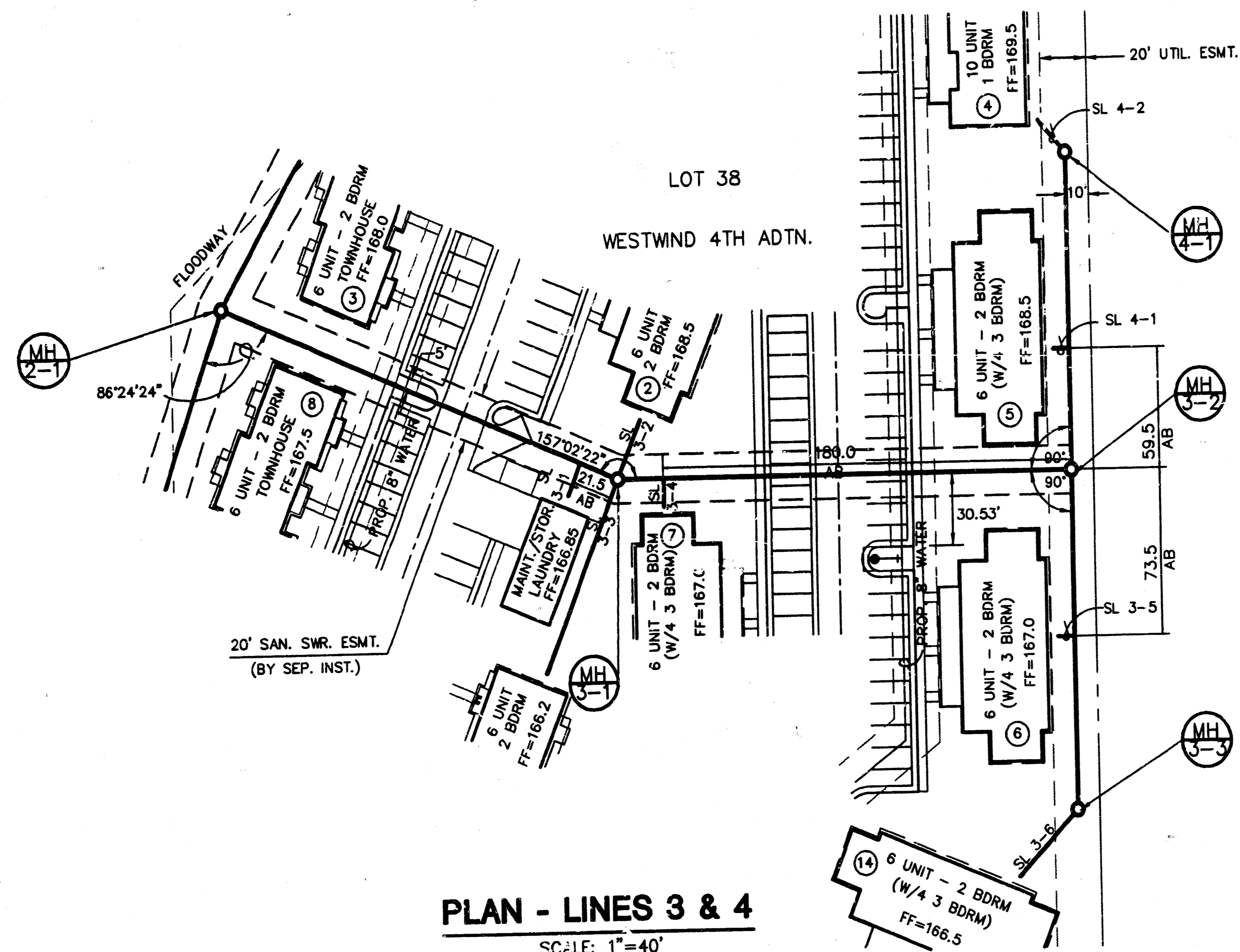


*Booked 10-25-93
JKB
From As Builts*

8-19-93

DEAN S. SELLERS
LICENSED
KANSAS
PROFESSIONAL ENGINEER
3583

ME	BERKSHIRE III	Date: 2/93 Job No: 9246SAM1
	PRIVATE SANITARY SEWER PLANS	AS BUILT 5-10-93 MID-KANSAS ENGINEERING CONSULTANTS INC. 3500 NORTH ROCK ROAD BUILDING #800 WICHITA, KANSAS 67226 (316) 636-5566



4" SERVICE LINE CONNECTIONS

SERVICE LINE NO.	SEWER MAIN STATION	LENGTH	SLOPE	FLOWLINE ELEV.	
				UPSTREAM	DOWNSTREAM
3-1	1+70	11	5%	159.07	158.52
3-2	1+88.3	26	5%	160.55	159.25
3-3	1+88.3	87	2%	160.66	158.92
3-4	2+08.3	14	5%	159.53	158.83
3-5	4+55	7	5%	161.11	159.76
3-6	5+26	37	2%	161.11	160.37
4-1	0+50	7	2%	163.02	161.88
4-2	1+30	18	2%	163.37	163.01

AS BUILT 5-10-93

