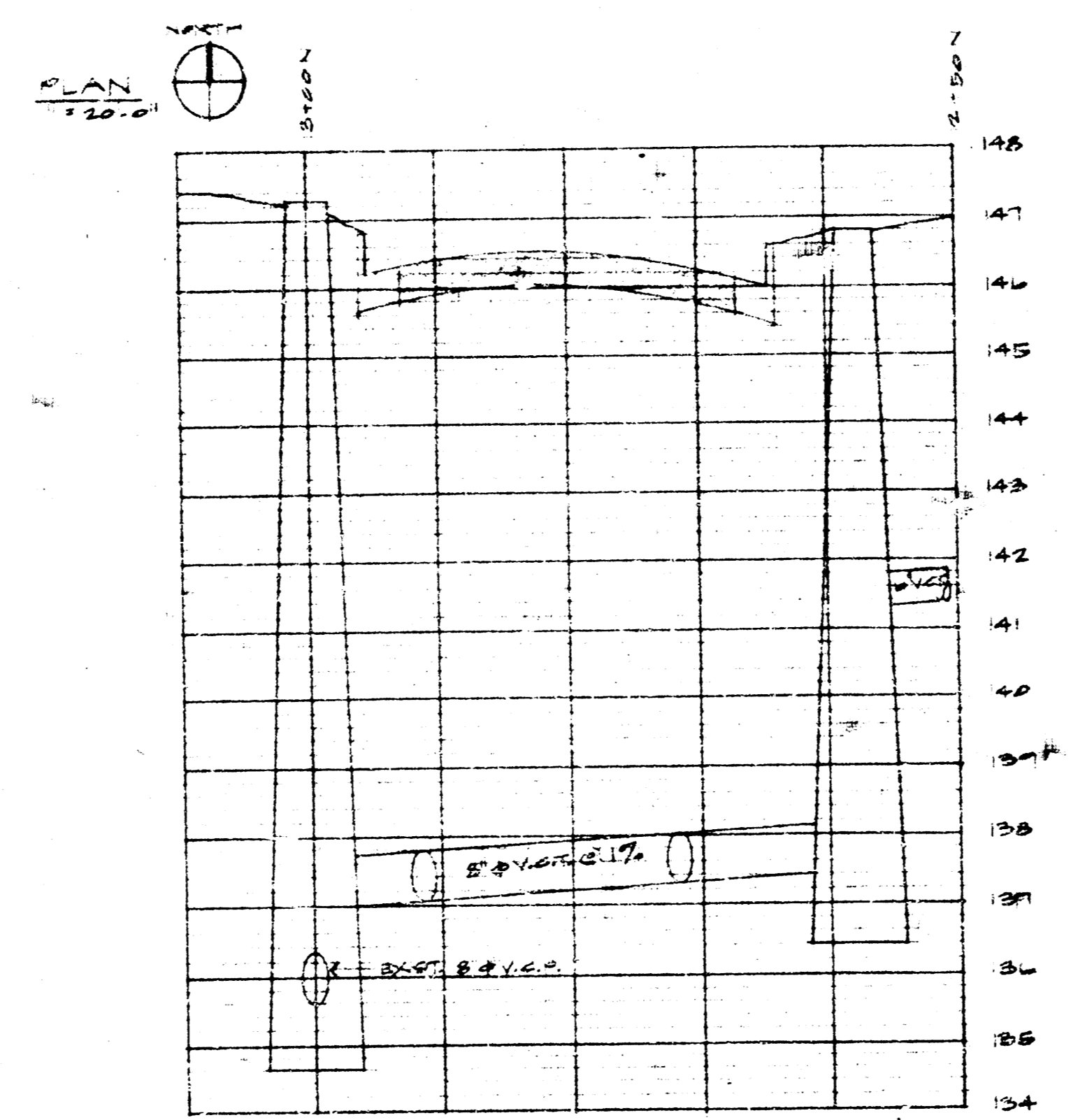
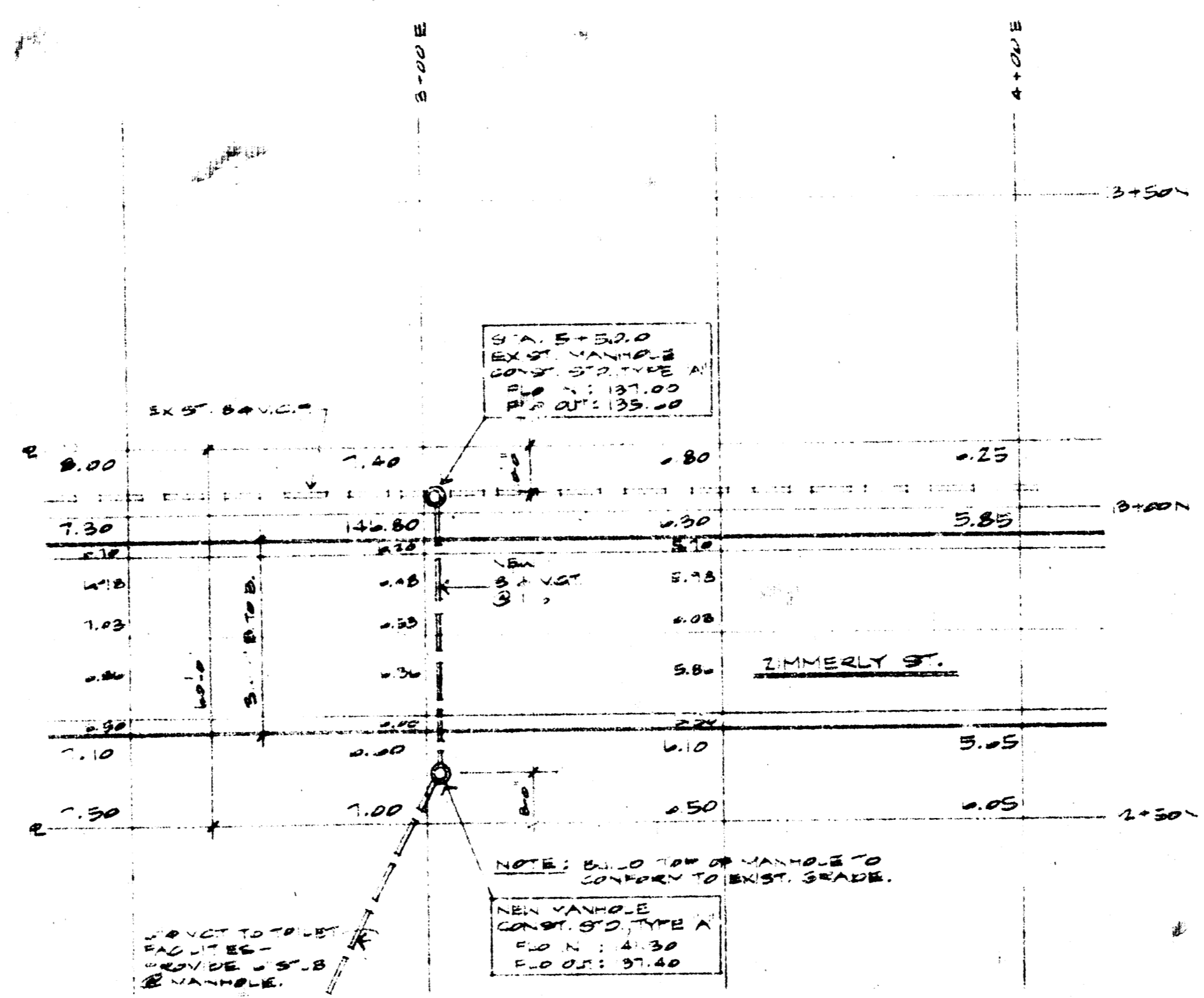


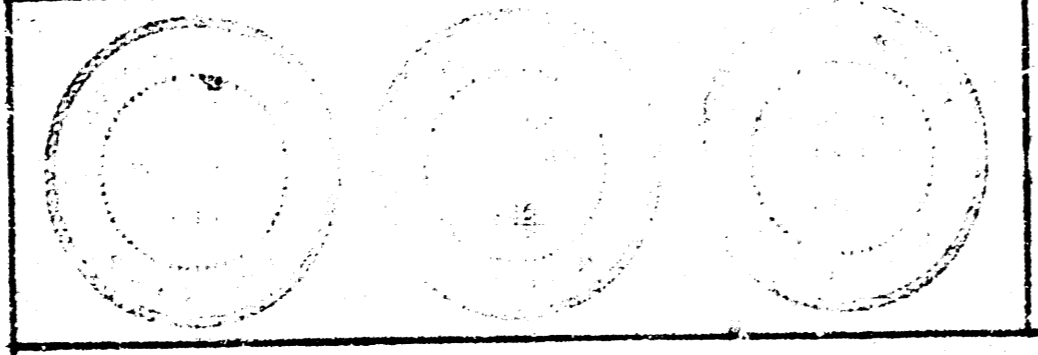
- GENERAL NOTES:**
1. AREA AROUND NEW SEWER TO BE SAND FILL & TYPED.
  2. TOP OF ASBESTOS PIPE SHALL BE TO BE UNIFORM TO EXISTING.
  3. STREET PAVEMENT SHALL BE REPAIRED TO STD. OF NEMA SPECIFICATION.



APPROVED FOR THE CITY OF BOSTON  
 BY THE BOARD OF PARK COMMISSIONERS  
 JANUARY 1971

**SEWER DETAILS**  
 BOARD OF PARK COMMISSIONERS  
 BOSTON PARK SHELTER AND RESTROOMS  
 WETA, LANDS

**WV** WOODMAN VAN DOREN REYNOLDS  
 PLANNING ARCHITECTS  
 2 JANUARY 1971  
 PAGE 1 OF 1



**PROFILE**  
 VERT. 1" = 10'  
 HORIZ. 1" = 10'