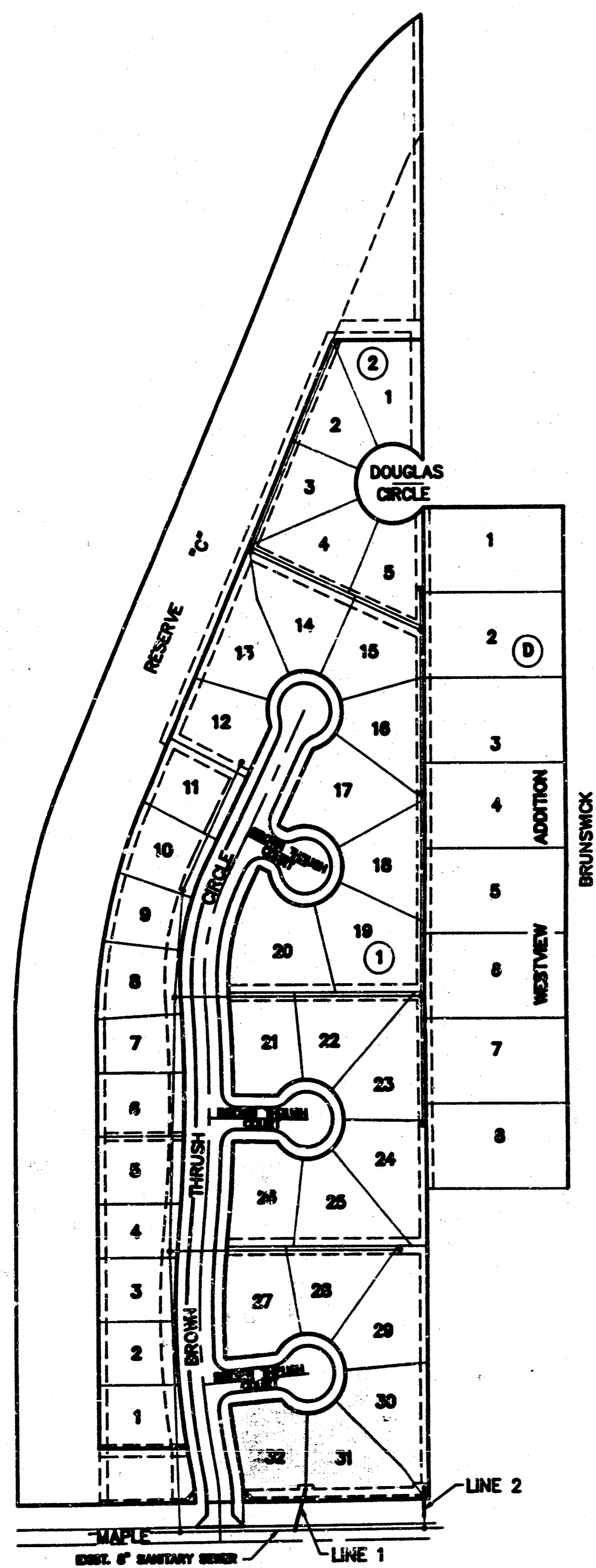


Sanitary Sewer Extensions For  
**BRISTOL PARK ADDITION**  
 SERVING LOTS 30 - 32, BLOCK 1

Project No.  
**251PPS**

City of Wichita, Kansas - Michael E. Lindebak, City Engineer



Benefit District

**INDEX**

1. Title sheet
2. Plan-Profile Line 1-Line 2
3. Clearout Riser Details

**GENERAL NOTES**

1. Underground utility service lines and overhead utility pole lines are to be adjusted as necessary by others prior to construction unless the plans specifically call for their adjustment by the Contractor or unless the plans specifically identify a utility to be adjusted by its owner during construction. Existing utilities and their location, as shown on the plans, represent the best information obtainable for design. The Contractor will be required to work around existing utilities within the right-of-way which do not conflict with proposed construction.
2. Rubble from the removal of miscellaneous structures and excess excavation which is to be wasted shall be disposed of on sites to be provided by the Contractor. These sites shall be approved by the Engineer as to suitability, appearance and site location. Locations that, in the opinion of the Engineer, will leave an unsightly appearance will not be approved.
3. The Contractor shall be responsible for preserving property irons. The Contractor will be required to re-establish any property irons which are damaged or destroyed by his construction operations. Such irons shall be re-established by a licensed land surveyor in accordance with state laws.
4. Contractor shall provide at least one through lane of traffic on Maple Street throughout the entire course of construction.

**NOTE TO CONTRACTOR**

INSPECTION AND TESTING FOR THIS PROJECT IS TO BE PROVIDED BY A LICENSED CONSULTING ENGINEERING FIRM UNDER CONTRACT WITH THE OWNER/DEVELOPER SAID INSPECTION TO BE IN ACCORDANCE WITH THE CITY OF WICHITA STANDARD CONSTRUCTION ENGINEERING PRACTICES AND CERTIFIED BY A LICENSED PROFESSIONAL ENGINEER. NO WORK SHALL BE PERFORMED IN DEDICATED EASEMENTS OR THE PUBLIC RIGHT-OF-WAY BY THE CONTRACTOR WITHOUT SUCH INSPECTION NOR SHALL ANY WORK BE COMMENCED IN DEDICATED EASEMENTS OR PUBLIC RIGHT-OF-WAY WITHOUT WRITTEN AUTHORIZATION BY THE CITY ENGINEER.

APPROVED AS NOTED

By CITY ENGINEER OF WICHITA

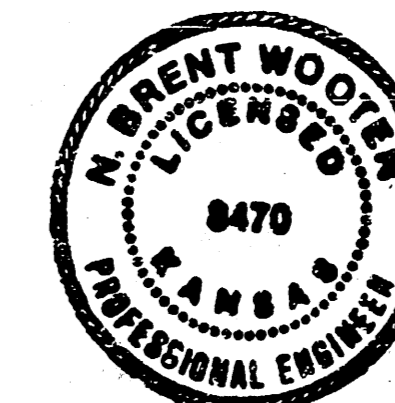
Sanitary Sewers VRH 5/11/90

Storm Sewers \_\_\_\_\_

Driveway Approaches \_\_\_\_\_

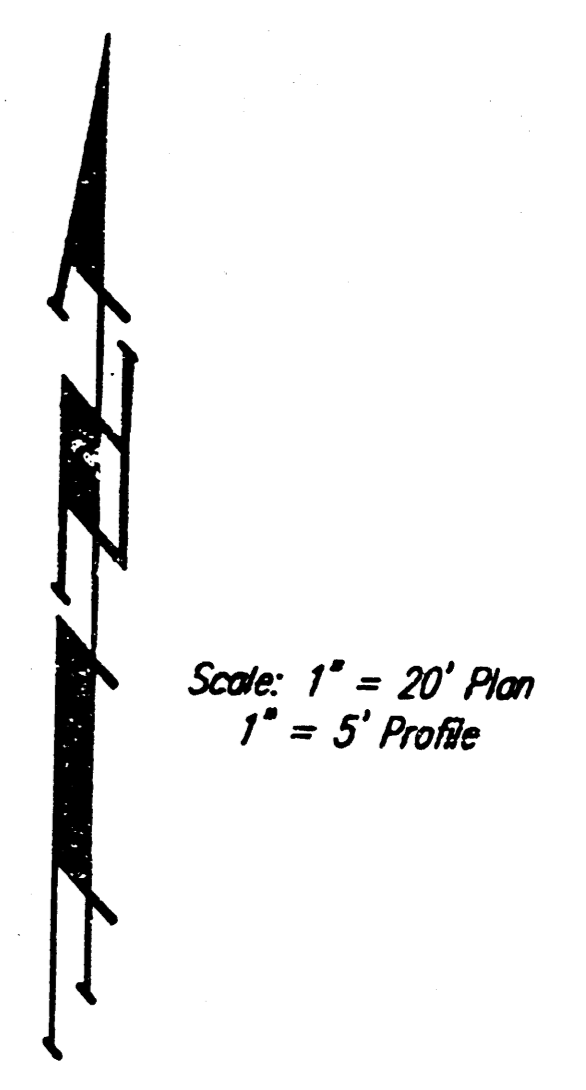
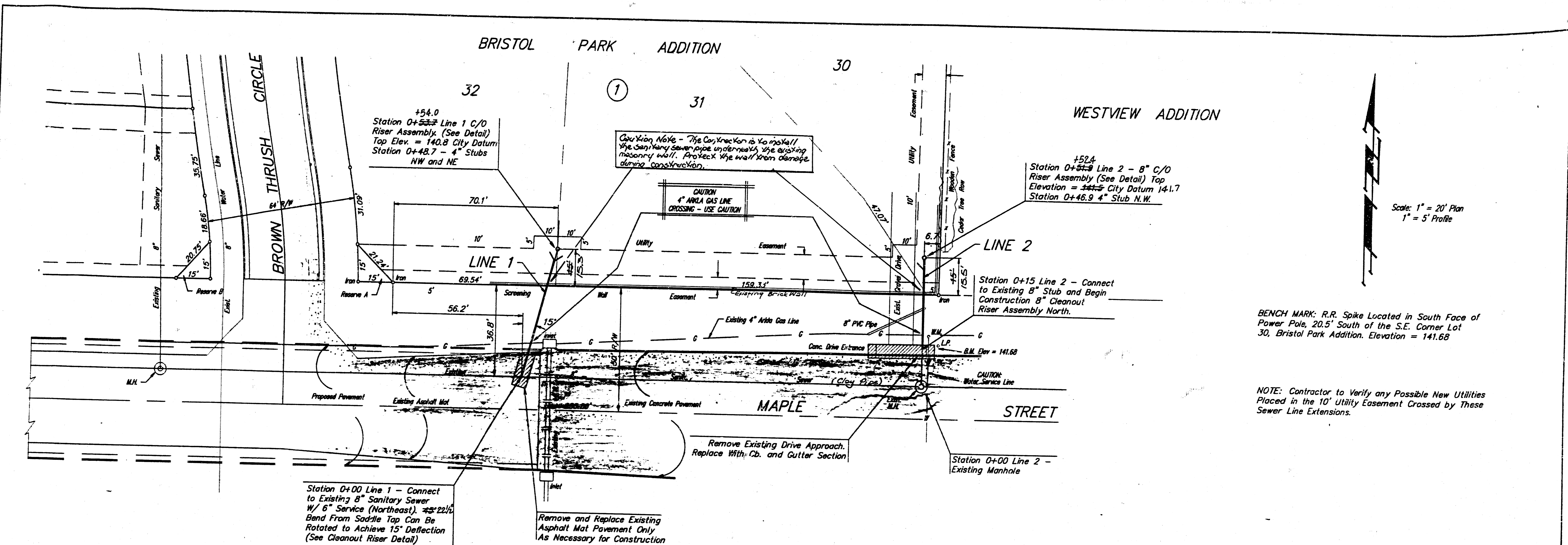
Water Mains \_\_\_\_\_

Paving \_\_\_\_\_



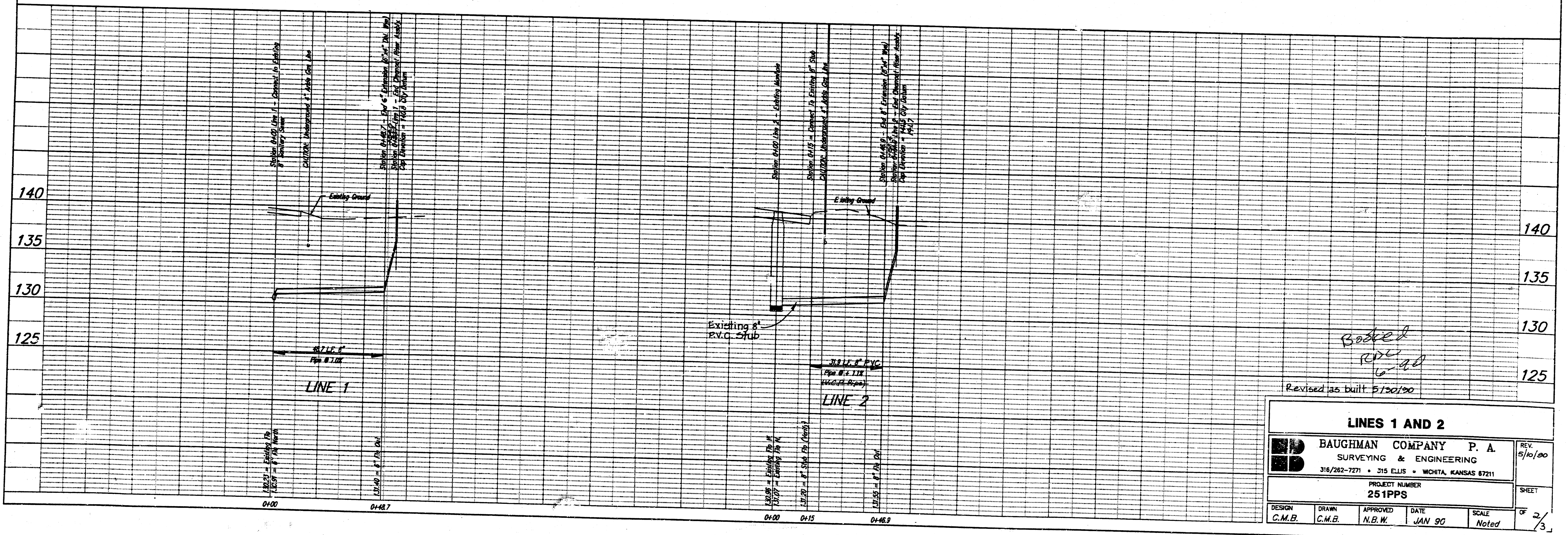
Revised as built 5/20/90  
 5/10/90

**BAUGHMAN COMPANY P. A.**  
 SURVEYING & ENGINEERING  
 316/262-7271 • 315 ELLIS • WICHITA, KANSAS 67211



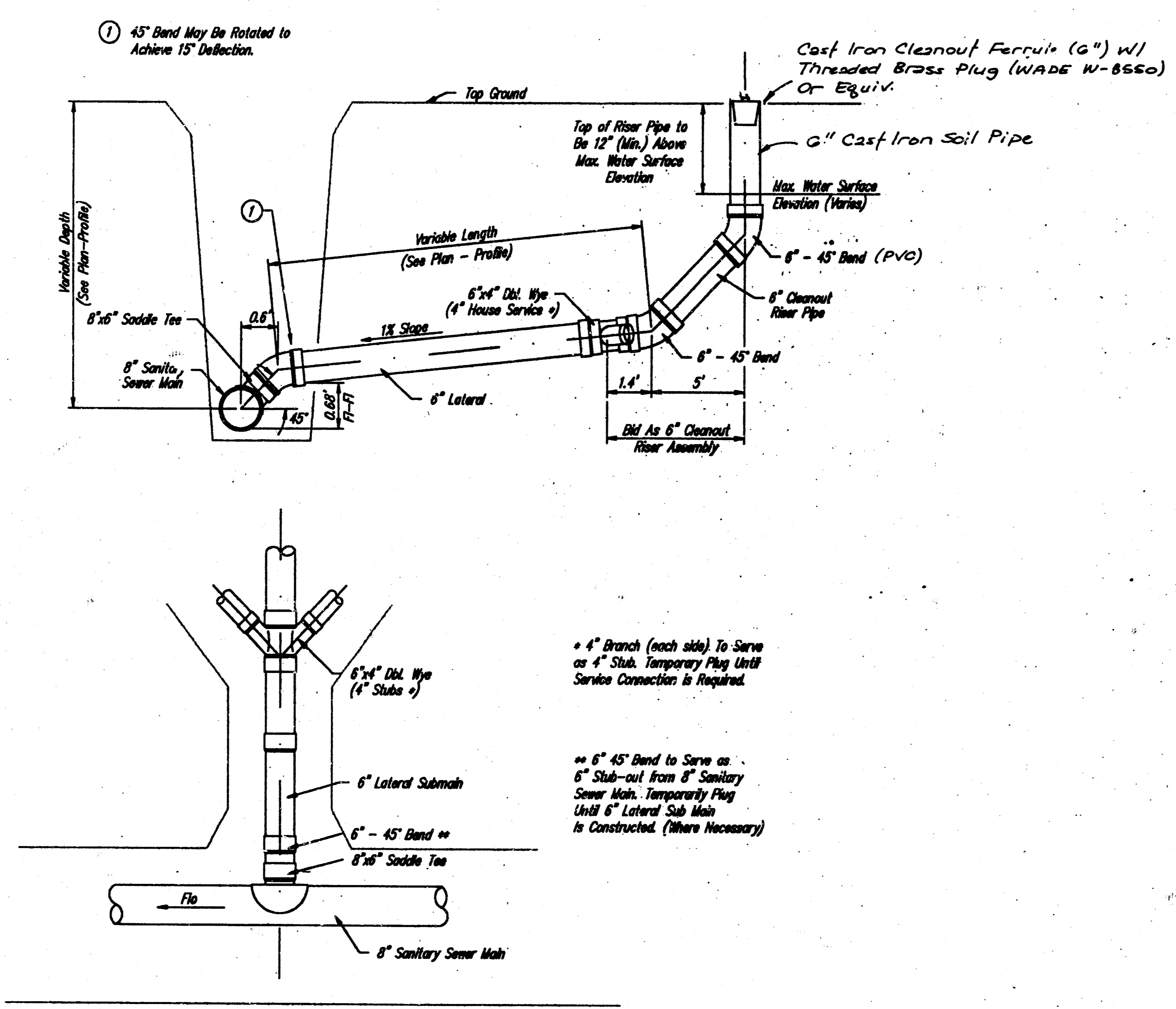
BENCH MARK: R.R. Spike Located in South Face of Power Pole, 20.5' South of the S.E. Corner Lot 30, Bristol Park Addition. Elevation = 141.68

NOTE: Contractor to Verify any Possible New Utilities Placed in the 10' Utility Easement Crossed by These Sewer Line Extensions.

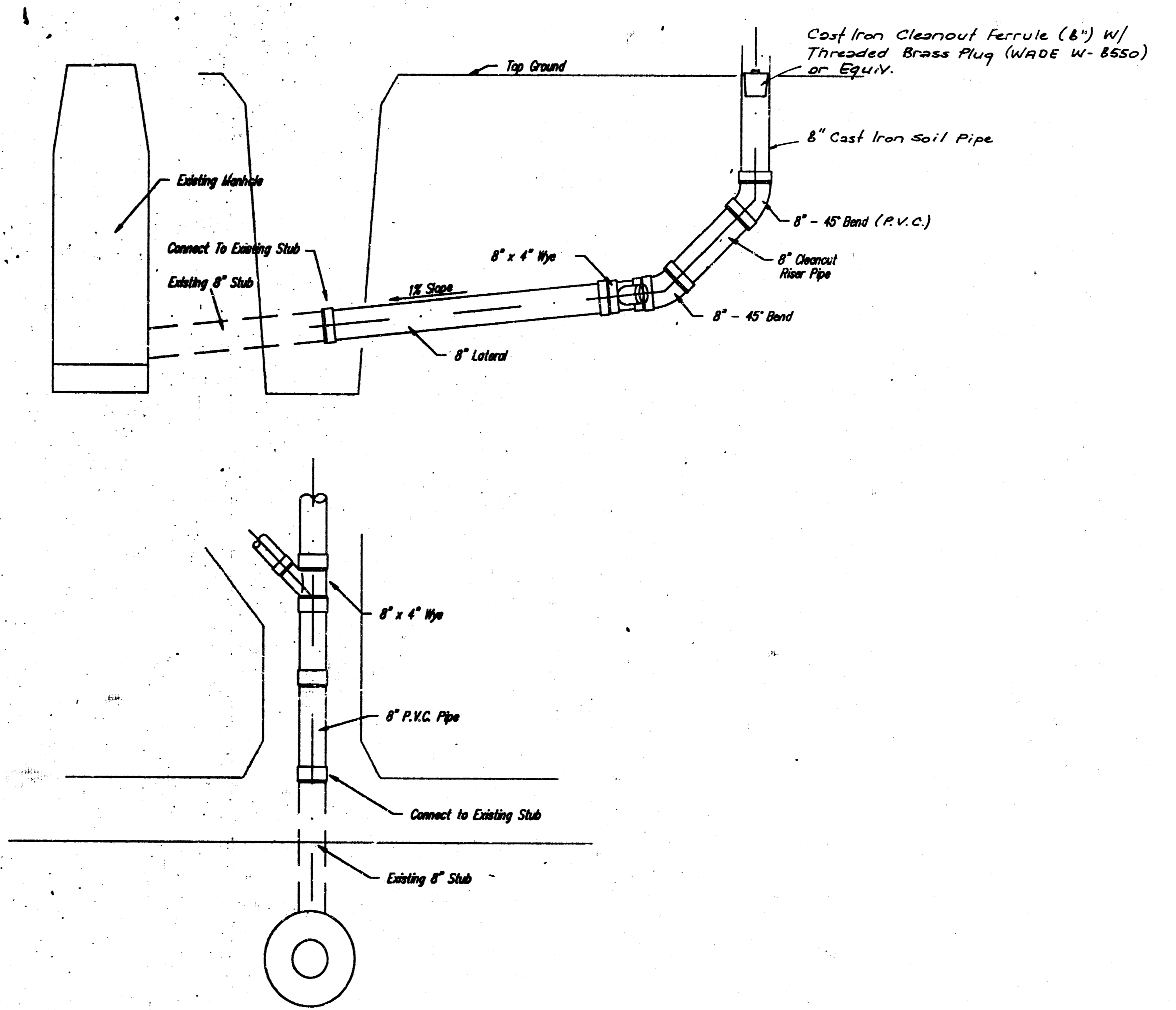


Revised as built 5/20/90

LINES 1 AND 2					
					REV. 5/10/00
316/262-7271 • 315 ELLIS • WICHITA, KANSAS 67211					
PROJECT NUMBER 251PPS					
DESIGN C.M.B.	DRAWN C.M.B.	APPROVED N.B.W.	DATE JAN 90	SCALE Noted	SHEET 2/3



6" CLEANOUT RISER ASSEMBLY DETAIL  
LINE 1



8" CLEANOUT RISER ASSEMBLY DETAIL  
LINE 2

\* 4" Branch (each side) to serve as 4" Stub. Temporary Plug Until Service Connection is Required.

\*\* 6" 45° Bend to serve as 6" Stub-out from 8" Sanitary Sewer Main. Temporary Plug Until 6" Lateral Sub Main is Constructed. (Where Necessary)

CLEANOUT RISER ASSEMBLY DETAILS					
	<b>BAUGHMAN COMPANY P. A.</b> SURVEYING & ENGINEERING 316/262-7271 • 315 ELLIS • WICHITA, KANSAS 67211				REV.
	PROJECT NUMBER <b>251PPS</b>				SHEET
DESIGN C.M.B.	DRAWN C.M.B.	APPROVED N.B.W.	DATE Jan. 1990	SCALE None	OF 3/3

10 5 5 8