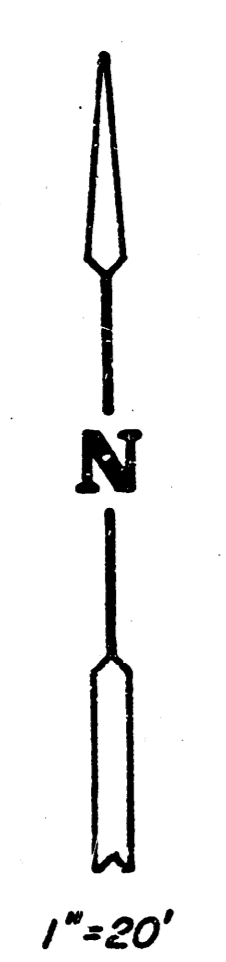
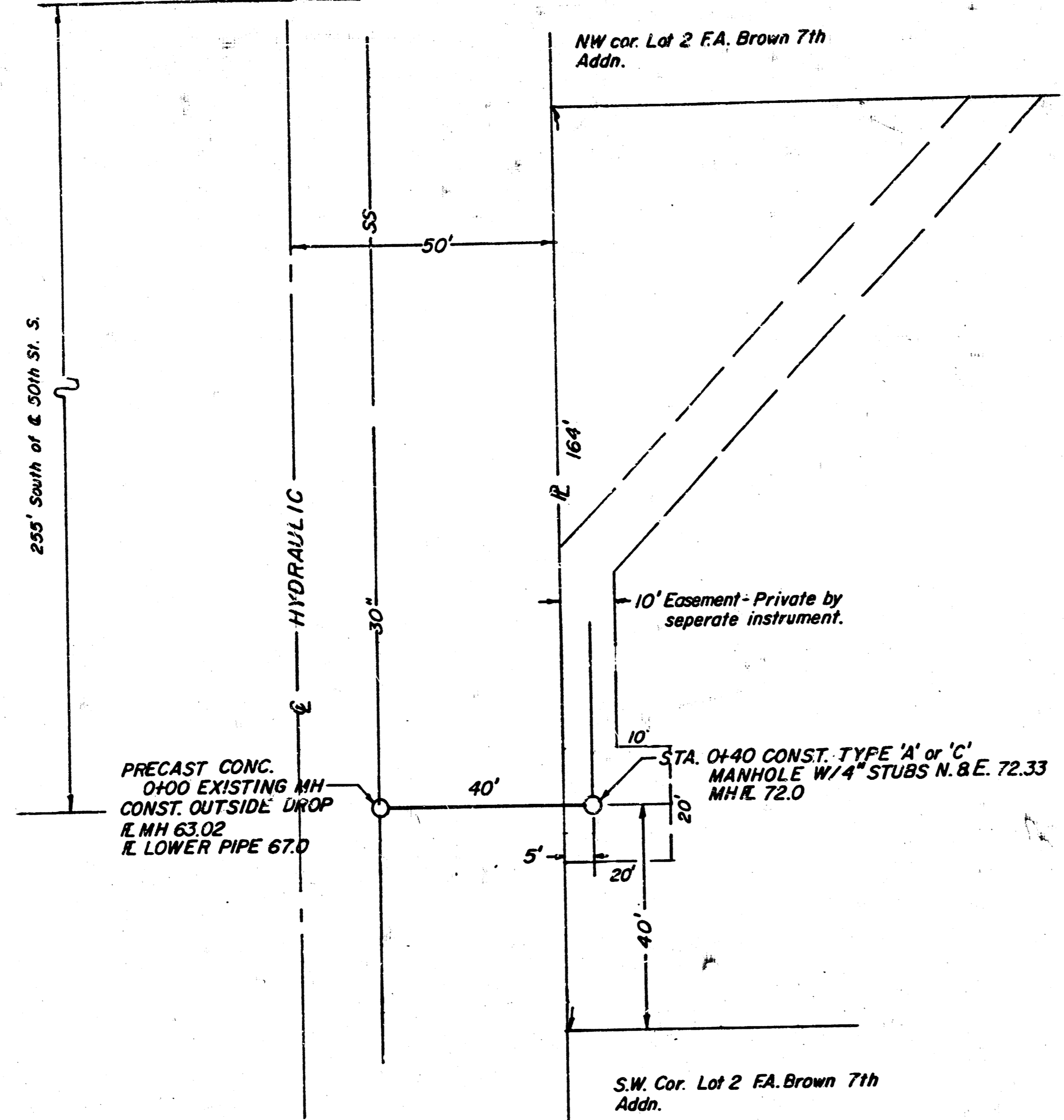


SANITARY SEWER EXTENSION TO SERVE LOTS 1 & 2 F.A. BROWN SEVENTH ADDITION TO WICHITA

CITY OF WICHITA
M.E. LINDEBAK CITY ENGINEER
PROJECT NO. 468-76-245-80000-000-000-008
DATE: SEPT. 1984



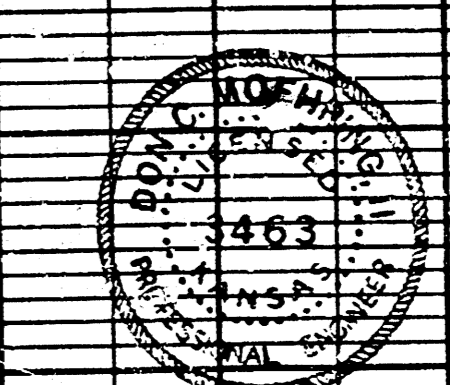
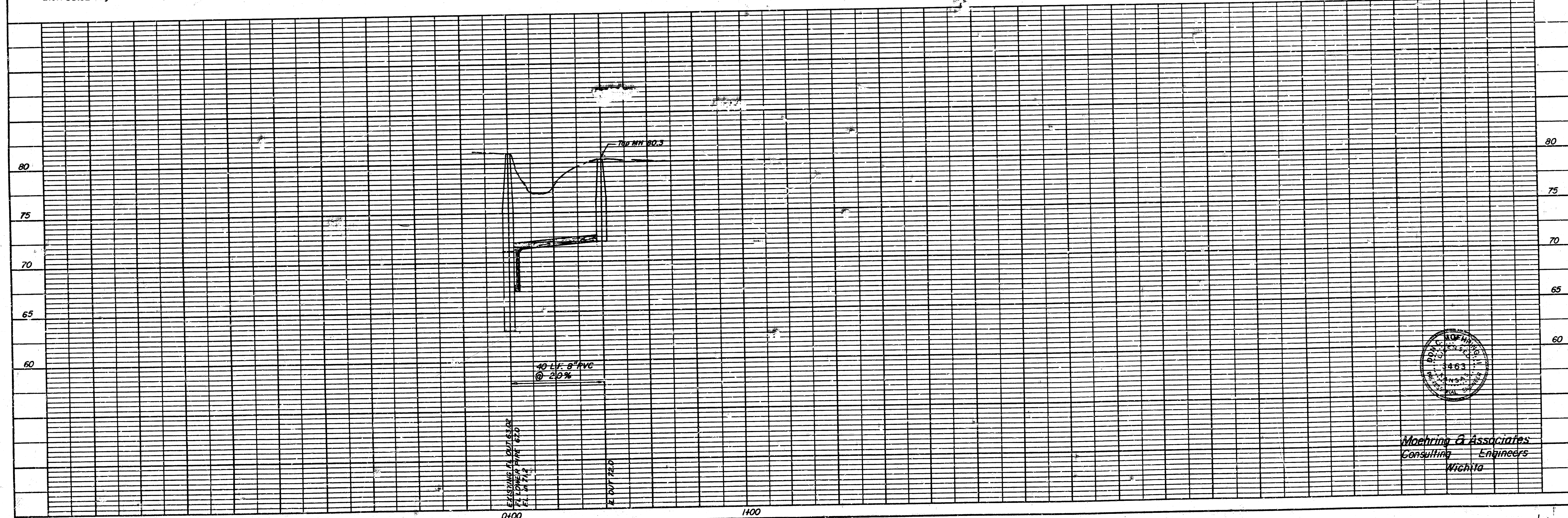
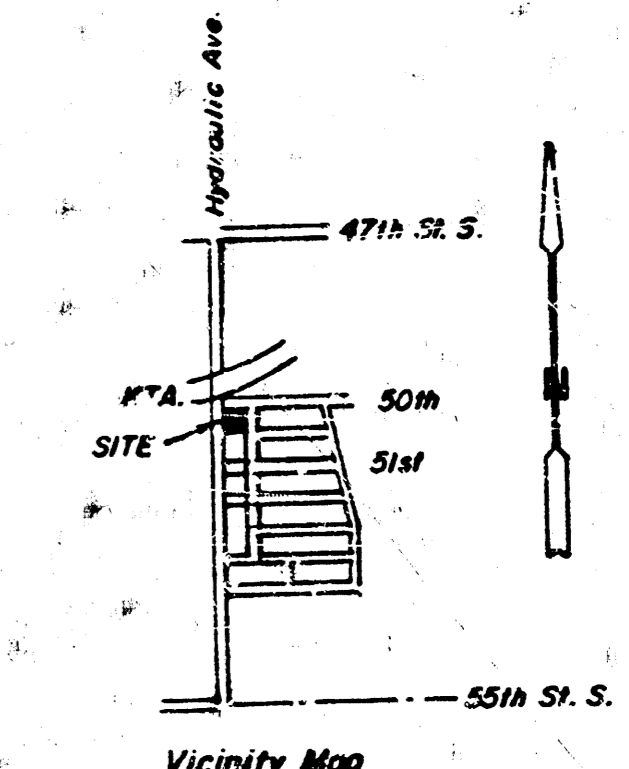
BENCHMARK:
R.R. Spike in pole 60' S. of the N.W. corner
Lot 2.
Elev. 80.82 City Datum

Notify the following companies prior to any trenching:

Arkla Gas Co.	42-8350
Bell Tele. Co.	268-3087
Cablevision	266-6817
Gas Service Co.	263-7511
K.S. & E.	261-6248
KAN-U-D-G-I-T	267-2889

APPROVED AS NOTED
By CITY ENGINEER OF WICHITA
Sanitary Sewers *[Signature]*
Storm Sewers _____
Driveway Approaches _____

NOTE TO CONTRACTOR
This project will be constructed under the supervision of the CITY ENGINEER and conforming to the SPECIFICATIONS of the CITY OF WICHITA. The CONTRACTOR will be responsible to the City of Wichita for all costs of construction.



Moehring & Associates
Consulting Engineers
Wichita

1400
PLATE - PLAN - PROFILE - E.A.
DRAWING MADE BY E.A.
NO. 1001

SHEET 1/3

NO.	DATE	BY	DESCRIPTION

NO.	DATE	BY	DESCRIPTION