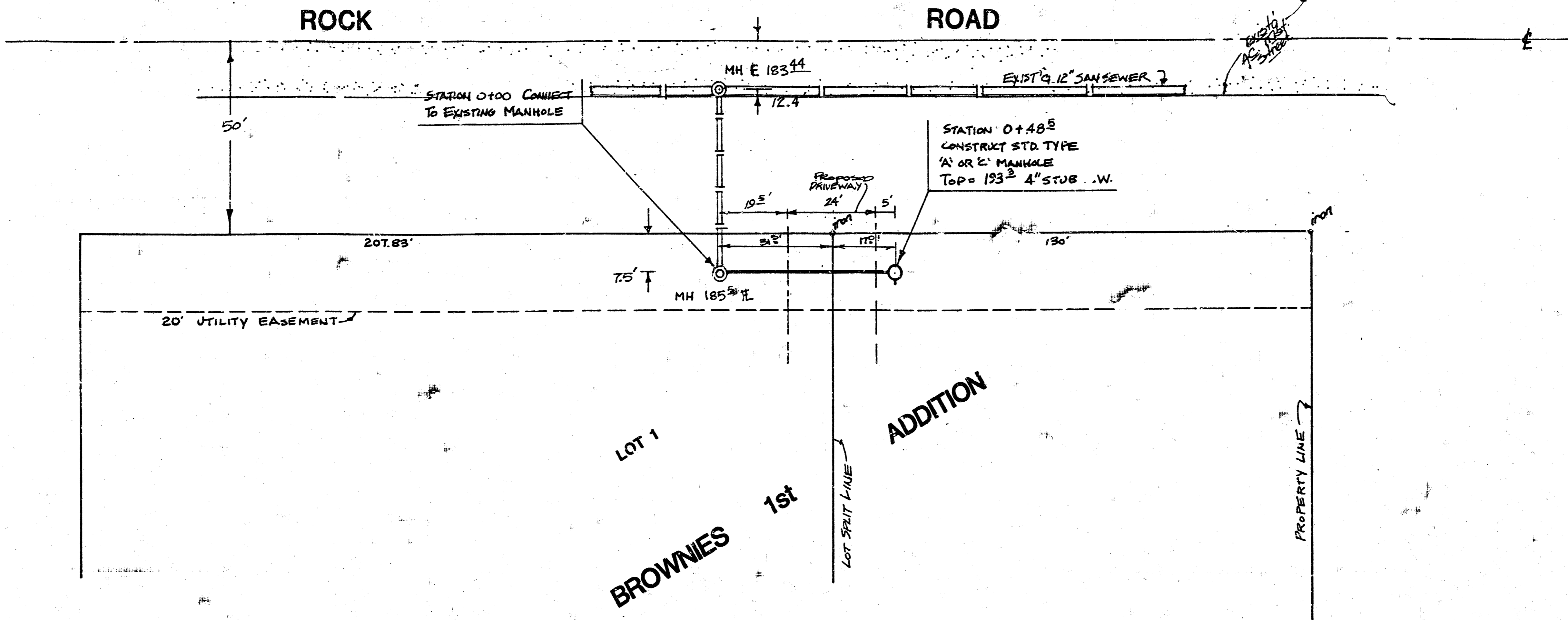
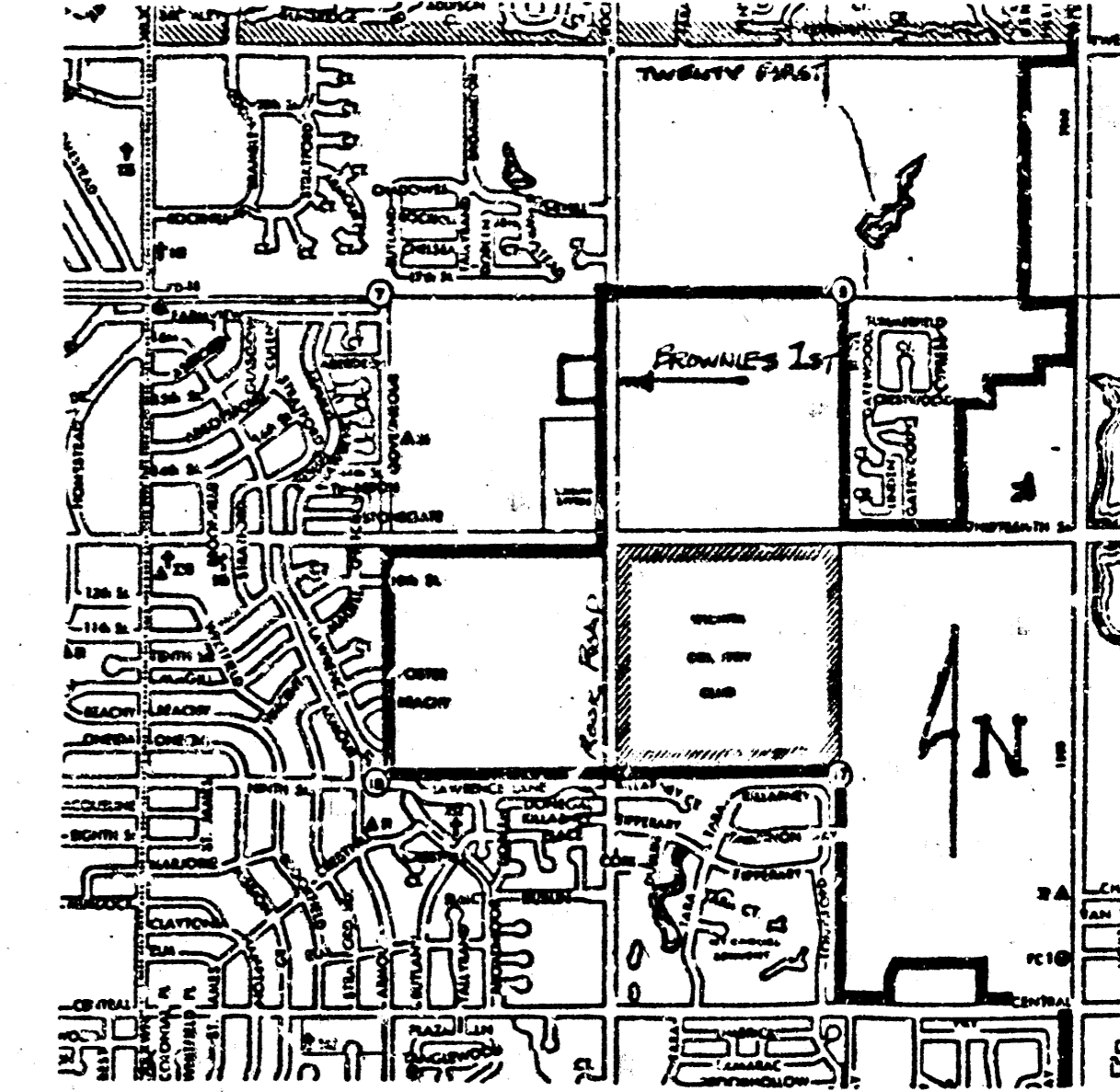


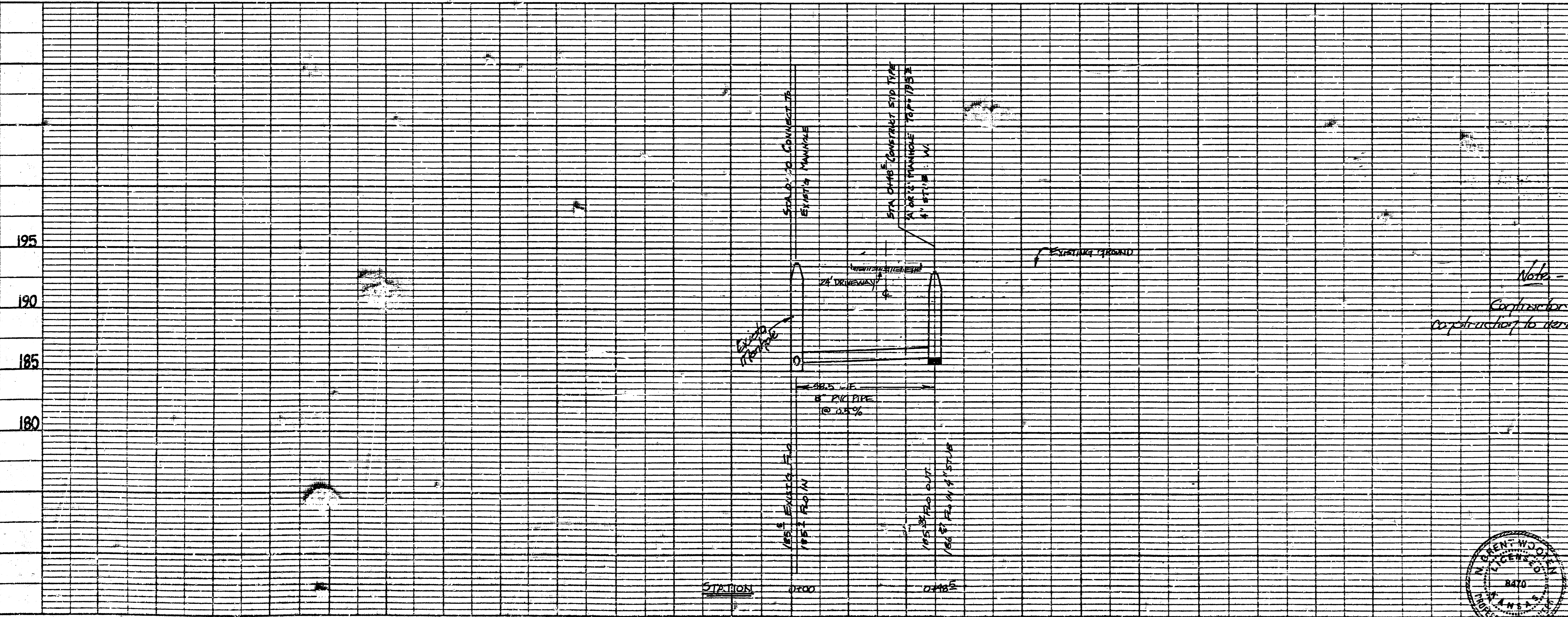
BM: CITY STANDARD DISC 28' EAST  
 & ROCK ROAD & 51' NORTH  
 OF CENTER RAILROAD TRACKS  
 ELE = 194.70



SCALE: 1" = 20' PLAN  
 1" = 20' PROFILE HORIZ.  
 1" = 5' PROFILE VERT.



PLAN  
 DATE: \_\_\_\_\_  
 BY: \_\_\_\_\_  
 CHECKED: \_\_\_\_\_  
 APPROVED: \_\_\_\_\_  
 TITLE: \_\_\_\_\_

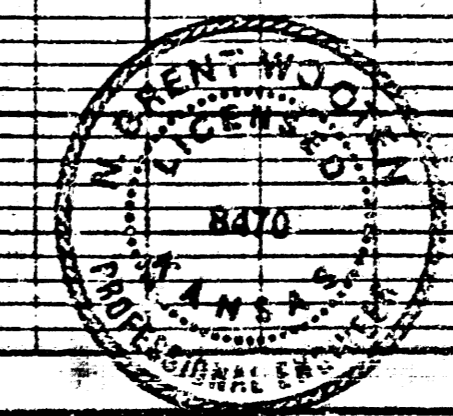


NOTE TO CONTRACTOR  
 This project will be constructed under the supervision of the CITY ENGINEER and the contractor shall be responsible for the construction of the project in accordance with the specifications of the City of Wichita. The CONTRACTOR will pay the city of Wichita for all costs of inspection.

APPROVED AS NOTED  
 By CITY ENGINEER OF WICHITA  
 Sanitary Sewers  
 Storm Sewers  
 Utility Structures

Note -  
 Contractor to contact Keweenaw Oil and Gas prior to construction to verify the location of any other utilities.

PROFILE  
 DATE: \_\_\_\_\_  
 BY: \_\_\_\_\_  
 CHECKED: \_\_\_\_\_  
 APPROVED: \_\_\_\_\_  
 TITLE: \_\_\_\_\_



PHASE II  
 PRIVATE SANITARY SEWER TO SERVE PART OF  
 LOT 1 BLOCK A BROWNIES 1st ADDITION  
 PROJECT NO. 468-78-245-80000-000-008  
 CITY OF WICHITA, KS

BAUGHMAN COMPANY, P.A.  
 SURVEYING & ENGINEERING  
 314-263-7271 • 330 LAURA • WICHITA, KANSAS 67214