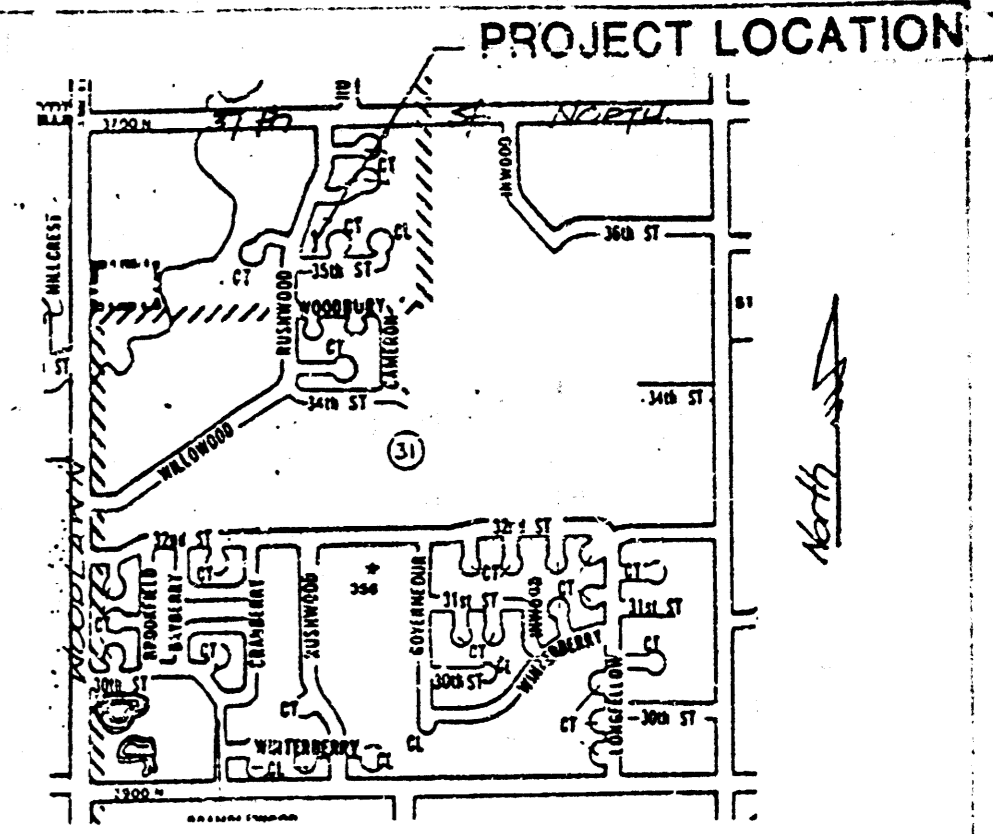
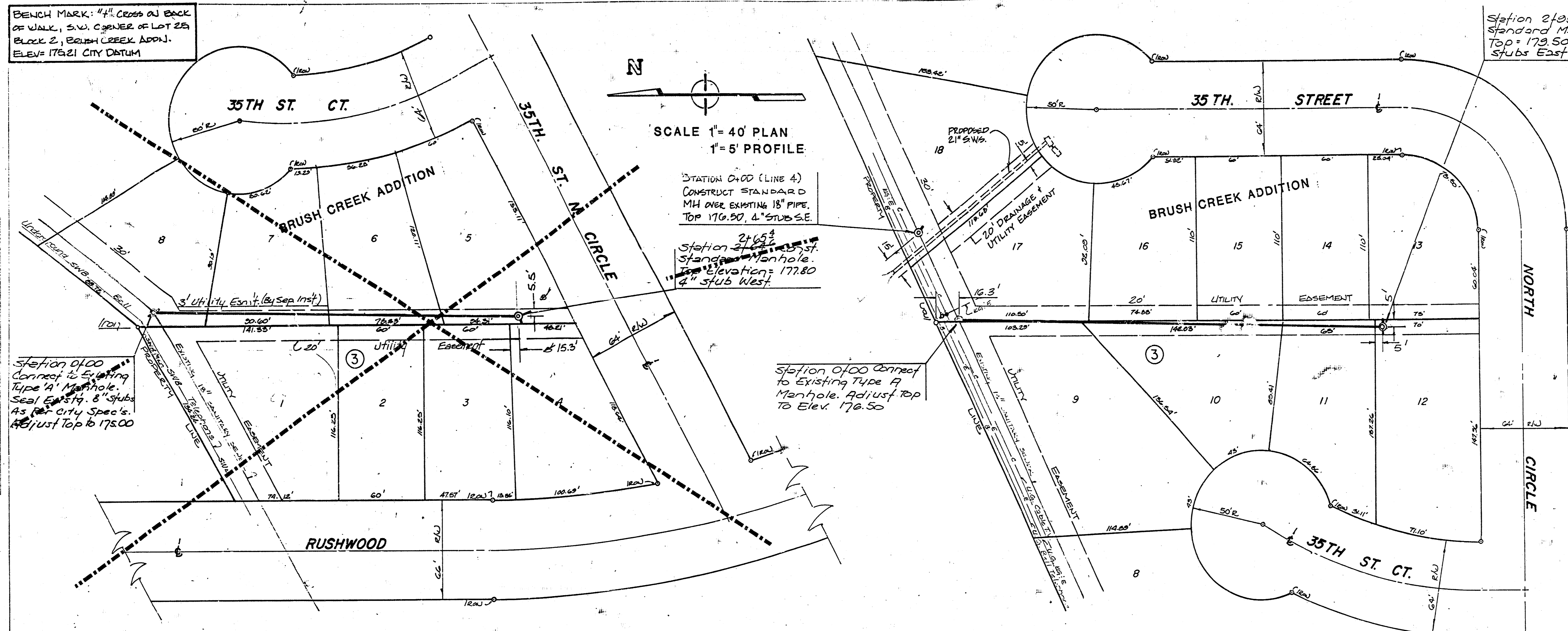


BENCH MARK: 4" CROSS ON BACK OF WALK, S.W. CORNER OF LOT 25, BLOCK 2, BRUSH CREEK ADDN. ELEV: 175.21 CITY DATUM

Station 2100.1 Const Standard Manhole, Top = 179.50; 4" stubs East: West



SCALE 1" = 40' PLAN
1" = 5' PROFILE



GENERAL NOTES:

- Underground utility service lines and overhead utility poles lines are to be adjusted by others prior to construction unless the plans specifically call for their adjustment by the contractor or unless the plans specifically identify a utility to be adjusted by its owner during construction. Existing utilities and their location, as shown on the plans, represent the best information obtainable for design. The contractor will be required to work around existing utilities within the right-of-way which do not conflict with proposed construction.
- The contractor shall be responsible for preserving property lines. The contractor will be required to re-establish any property lines which are damaged or destroyed by his construction operations. Such lines shall be re-established by a licensed land surveyor in accordance with state law.

NOTE TO CONTRACTOR

INSPECTION AND TESTING FOR THIS PROJECT IS TO BE PROVIDED BY A LICENSED CONSULTING ENGINEERING FIRM UNDER CONTRACT WITH THE OWNER/DEVELOPER. SAID INSPECTION TO BE IN ACCORDANCE WITH THE CITY OF WICHITA STANDARD CONSTRUCTION ENGINEERING PRACTICES AND CERTIFIED BY A LICENSED PROFESSIONAL ENGINEER. NO WORK SHALL BE PERFORMED IN DEDICATED EASEMENTS OR THE PUBLIC RIGHT-OF-WAY BY THE CONTRACTOR WITHOUT SUCH INSPECTION NOR SHALL ANY WORK BE COMMENCED IN DEDICATED EASEMENTS OR PUBLIC RIGHT-OF-WAY WITHOUT WRITTEN AUTHORIZATION BY THE CITY ENGINEER.

APPROVED AS NOTED
By CITY ENGINEER OF WICHITA

Sanitary Sewers: 1/10/89

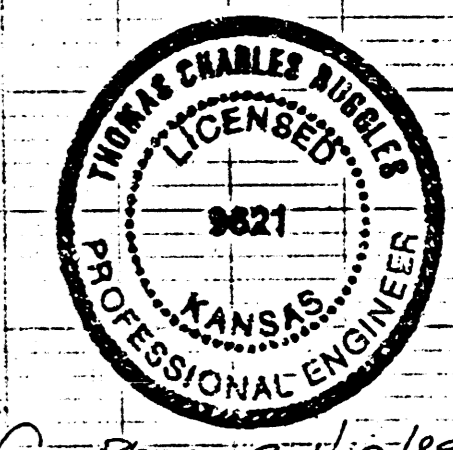
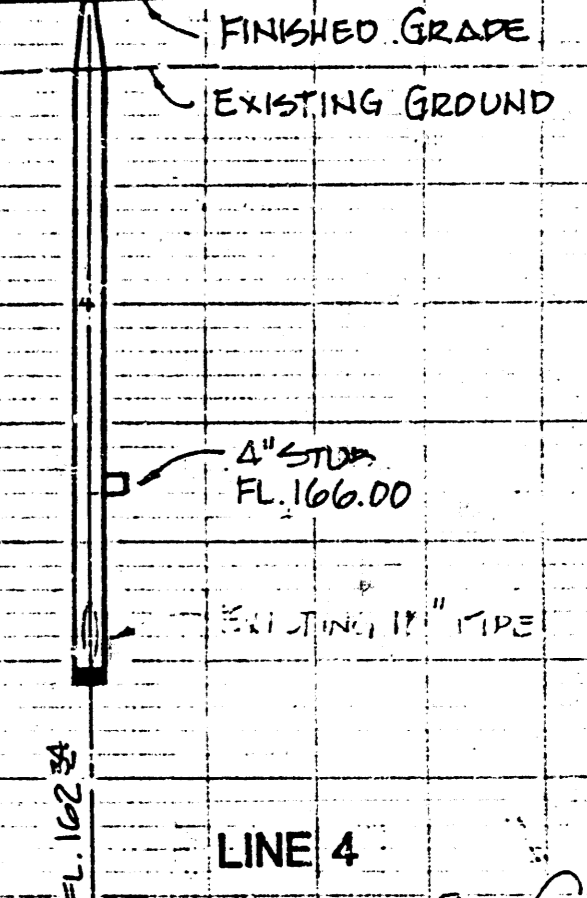
Storm Sewers:

Driveway Approaches:

Water Mains:

Gas:

STA. 0100 CONSTRUCTED M.H. OVER EXISTING 18" PIPE, TOP 176.50, 4" STUBS E:W



Rev. for Phase 2 1/10/89 CB
Rev. As built 2-26-88 TC

PRIVATE SANITARY SEWER TO SERVE LOTS 10 - 18, BLOCK 3, BRUSH CREEK ADDITION

PROJECT NO. 468-76-245-80001-000-000-201

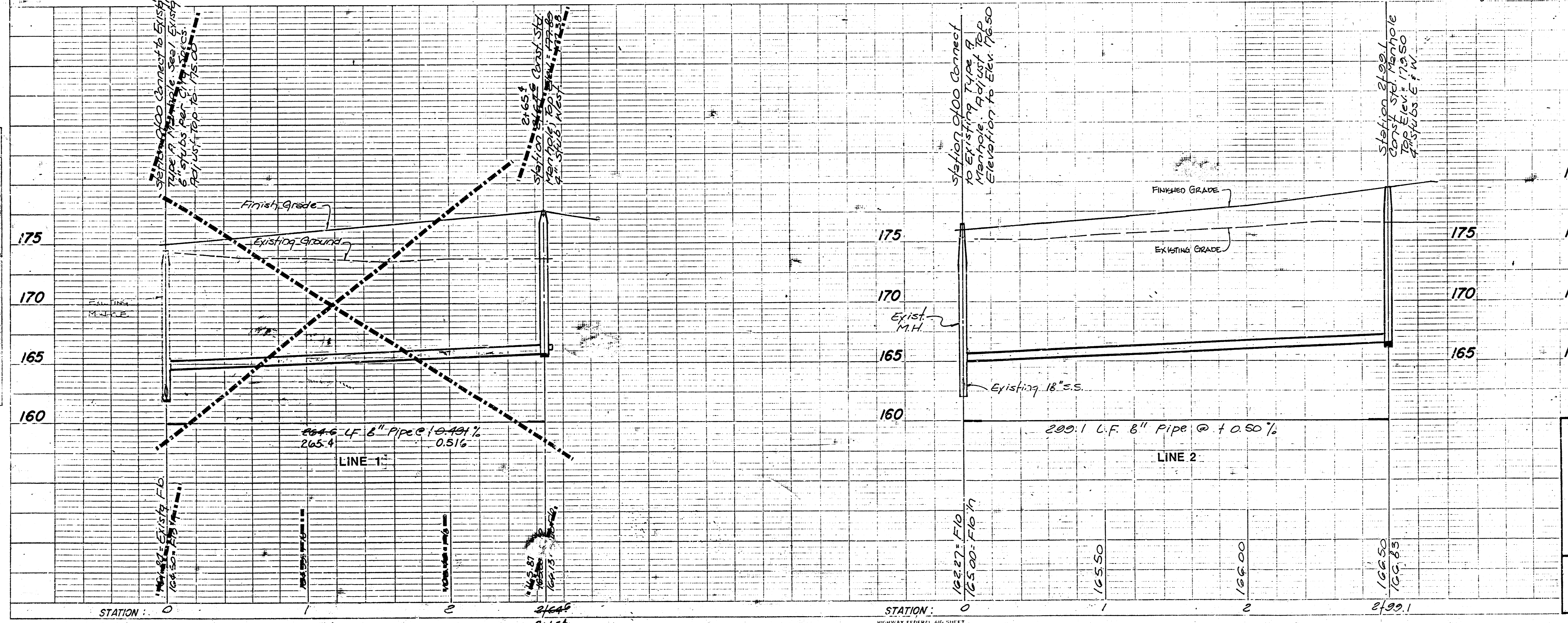
CITY OF WICHITA, KS

BAUGHMAN COMPANY, P.A.
SURVEYING & ENGINEERING
318/282-7271 • 315 ELLIS • WICHITA, KANSAS 67211

INDEX CODE 607556

PLAN SHEET: PH I, CS BA 15
NOTEBOOK: PH II, CS BA 40, 1/8/83
NO. 11

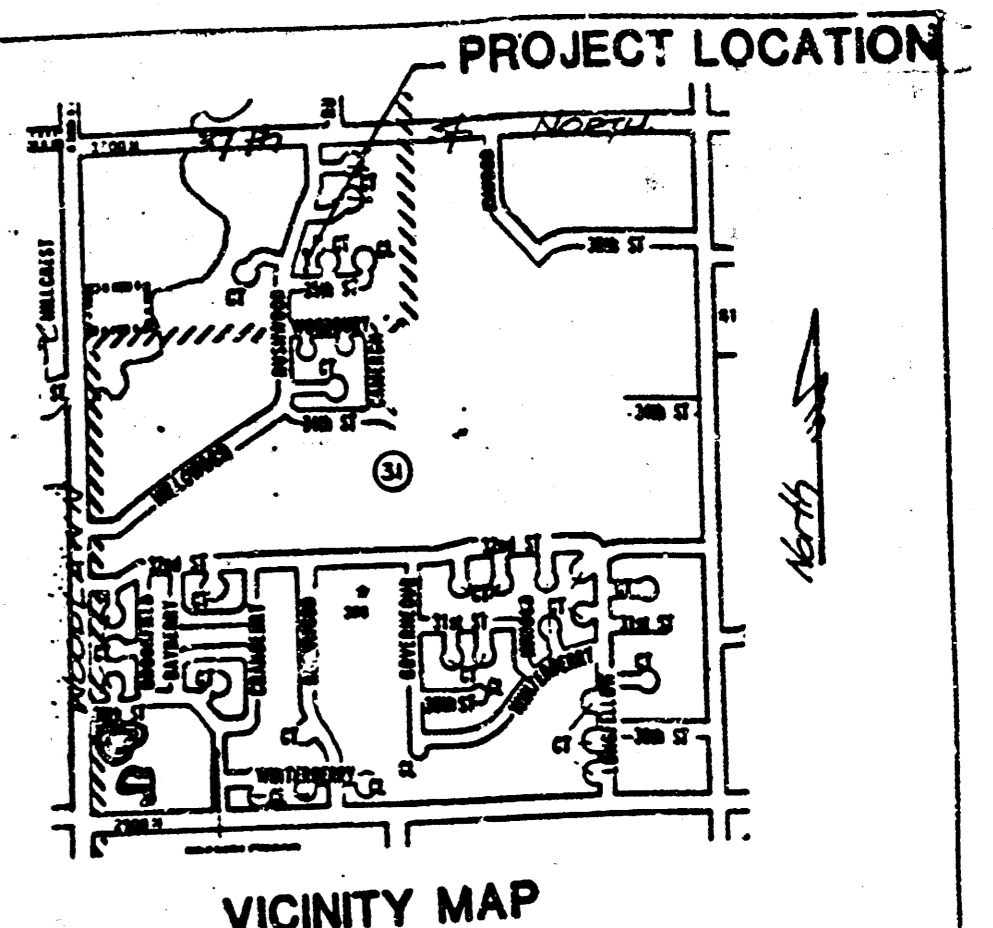
PROFILE SHEET: PH I, CS BA 15
NOTEBOOK: PH II, CS BA 40, 1/8/83
NO. 11



FILMED FROM THE BEST AVAILABLE COPY

BENCH MARK: 4" CROSS ON BACK OF WALK, S.W. CORNER OF LOT 25, BLOCK 2, BRUSH CREEK ADDN. ELEV. 176.21 CITY DATUM

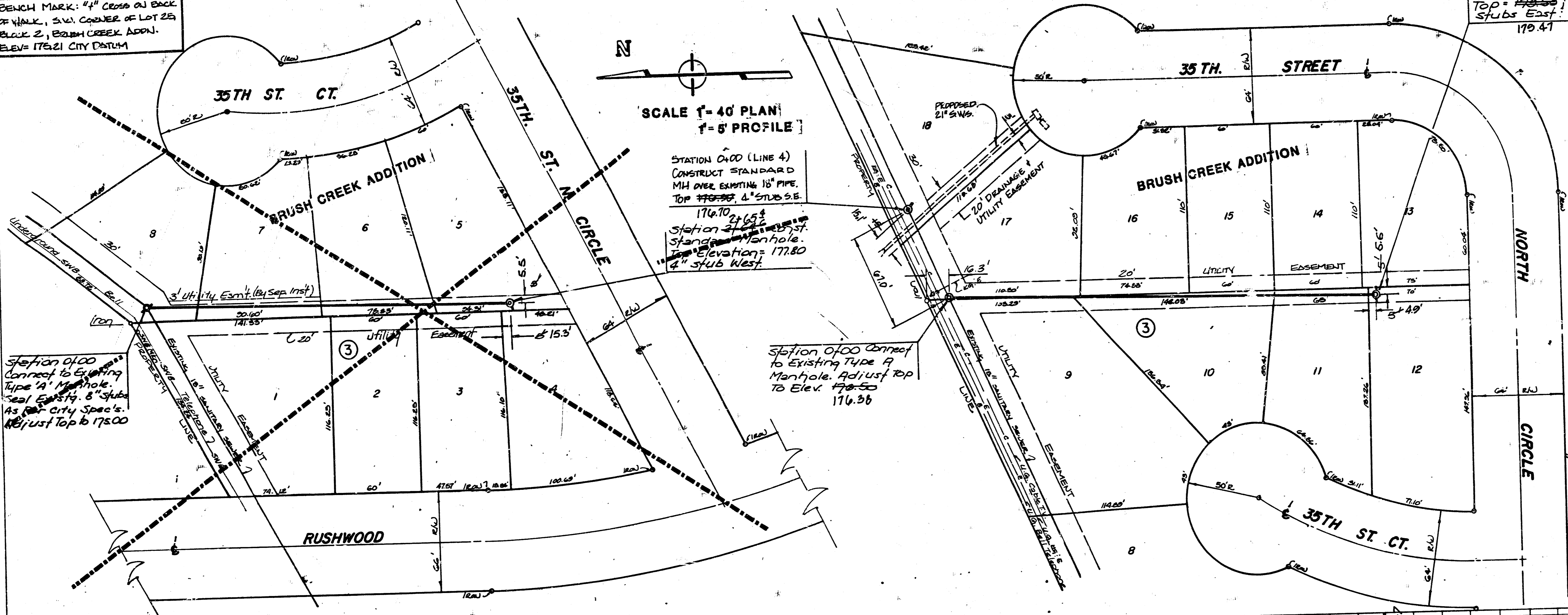
Station 2130.1 Const. Standard Manhole, Top = 176.80; 4" stubs East; West 179.41



SCALE 1" = 40' PLAN
1" = 5' PROFILE

STATION 0+00 (LINE 4)
CONSTRUCT STANDARD MH OVER EXISTING 18" PIPE, TOP 177.80, 4" STUBS S.E.

Station 0+00 Connect to Existing Type A Manhole. Adjust Top to Elev. 176.50 to Elev. 176.56



GENERAL NOTES

- Underground utility service lines and overhead utility pole lines are to be adjusted as necessary by owner prior to construction unless the plans specifically call for their adjustment by the contractor or unless the plans specifically identify a utility to be adjusted by its owner during construction. Existing utilities and their location, as shown on the plans, represent the best information obtainable for design. The Contractor will be required to work around existing utilities within the right-of-way which do not conflict with proposed construction.
- The Contractor shall be responsible for preserving property property which may be damaged or destroyed by his construction operations. Such items shall be re-established by a licensed land surveyor in accordance with state law.

NOTE TO CONTRACTOR

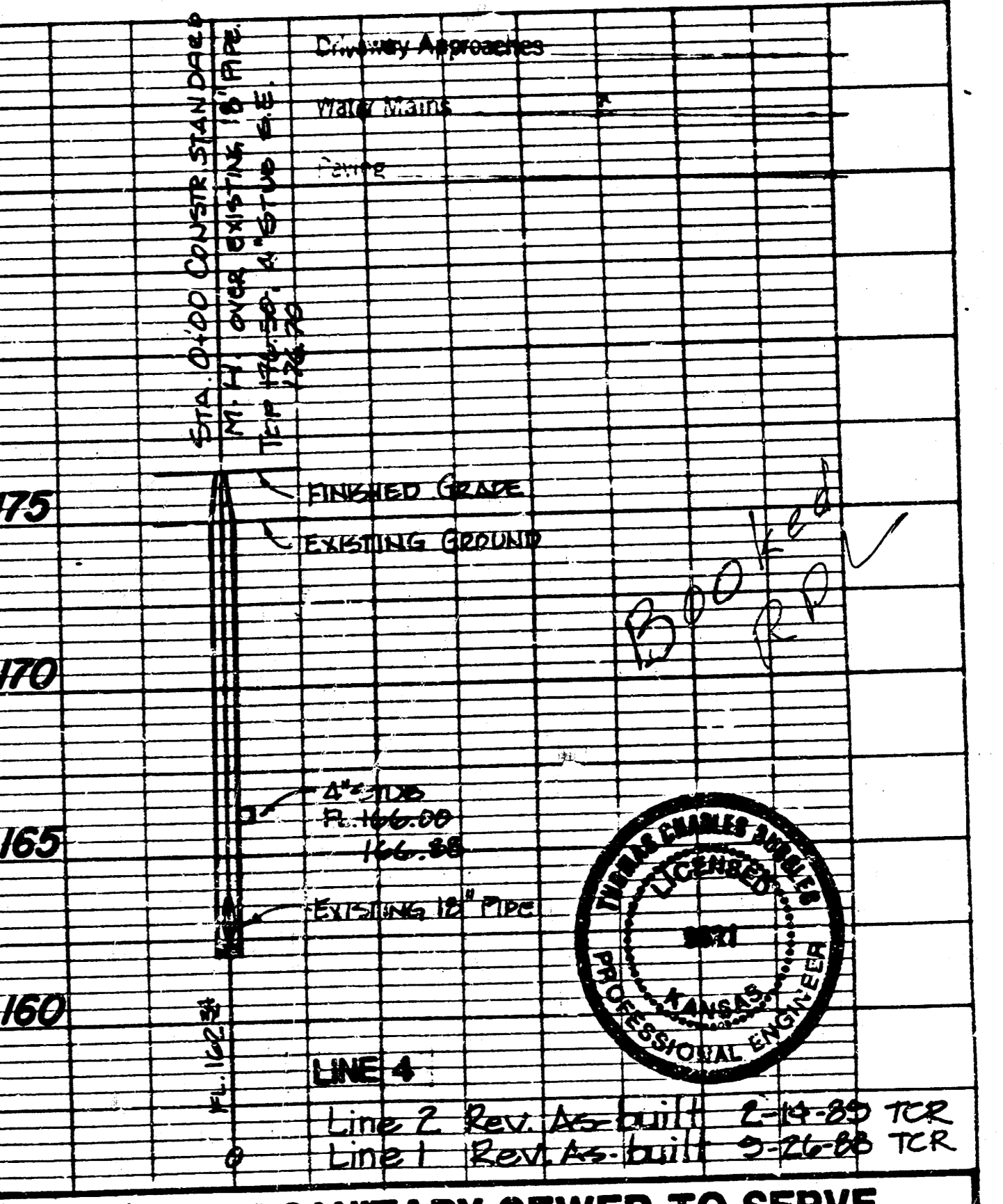
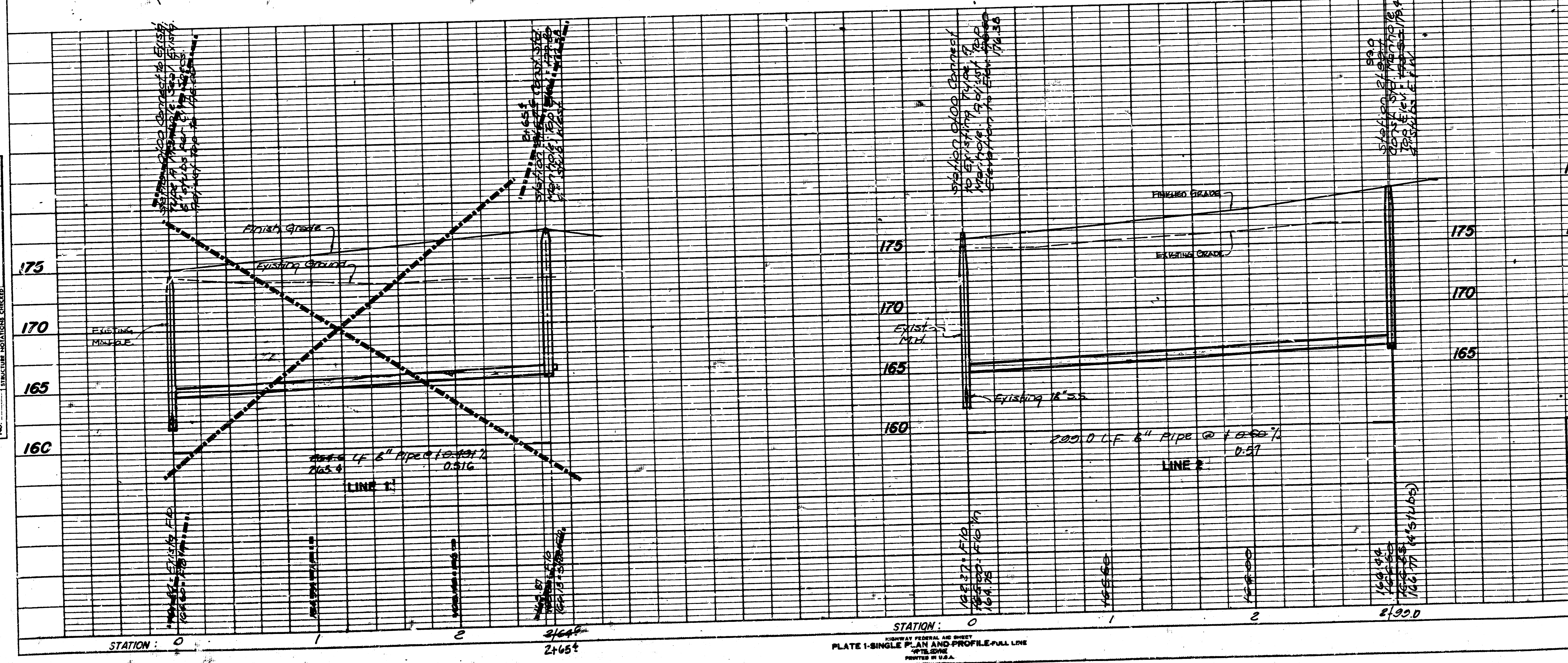
INSPECTION AND TESTING FOR THIS PROJECT IS TO BE PROVIDED BY A LICENSED CONSULTING ENGINEERING FIRM UNDER CONTRACT WITH THE OWNER/DEVELOPER. SAID INSPECTION TO BE IN ACCORDANCE WITH THE CITY OF WICHITA STANDARD CONSTRUCTION ENGINEERING PRACTICES AND CERTIFIED BY A LICENSED PROFESSIONAL ENGINEER. NO WORK SHALL BE PERFORMED IN DEDICATED EASEMENTS OR THE PUBLIC RIGHT-OF-WAY BY THE CONTRACTOR WITHOUT SUCH INSPECTION AND CERTIFICATION. ANY WORK BE COMMENCED IN REGIMENTS OR PUBLIC RIGHT-OF-WAY WITHOUT WRITTEN AUTHORIZATION BY THE CITY ENGINEER.

APPROVED AS NOTED
By CITY ENGINEER OF WICHITA

Sanitary Sewers: 1/2"
Storm Sewers: 1/2"

DATE: 08/15/92
BY: P.J. CS, B.A. 15
CHECKED: P.H. CS, B.A. 40
DATE: 7/15/92
BY: [Signature]
CHECKED: [Signature]

DATE: [Blank]
BY: [Blank]
CHECKED: [Blank]
DATE: [Blank]
BY: [Blank]
CHECKED: [Blank]



PRIVATE SANITARY SEWER TO SERVE
LOTS 10 - 18, BLOCK 3,
BRUSH CREEK ADDITION

PROJECT NO.
468-76-245-80001-000-000-201

CITY OF WICHITA, KS

BAUGHMAN COMPANY, P.A.
SURVEYING & ENGINEERING
312/252-7271 • 315 ELLIS • WICHITA, KANSAS 67211

FILMED FROM THE BEST AVAILABLE COPY