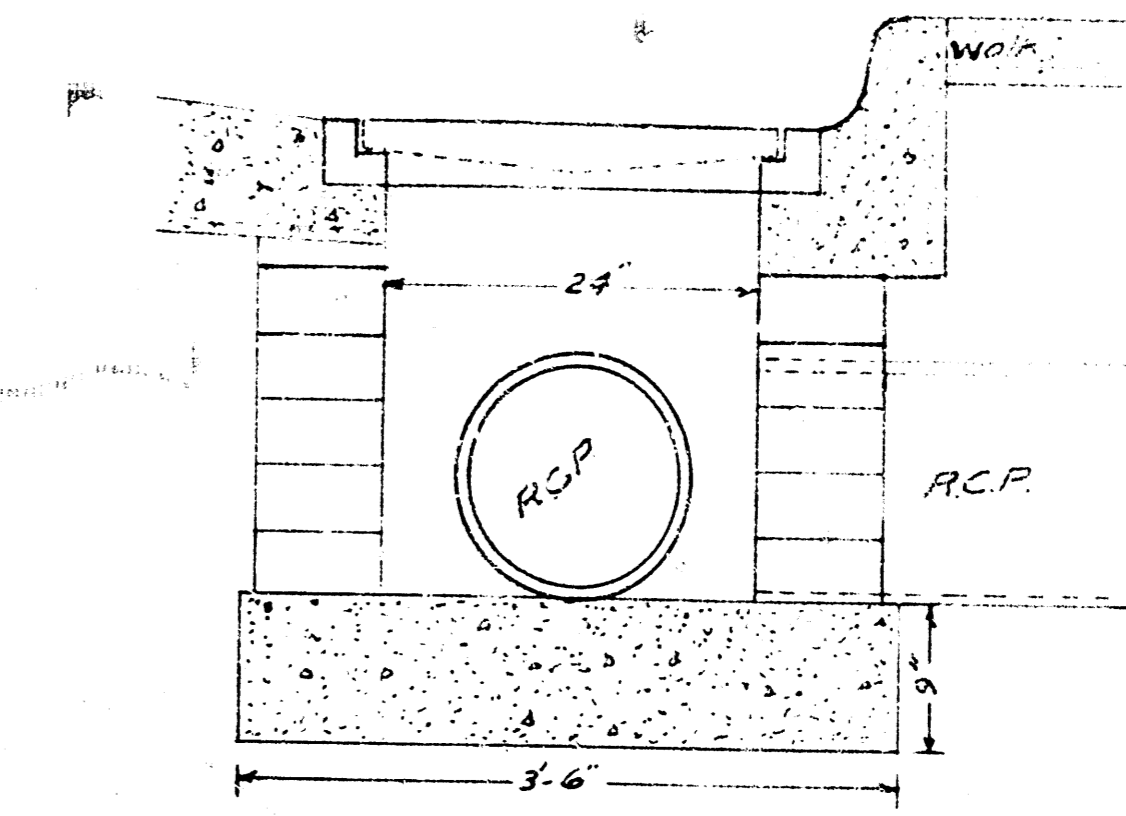
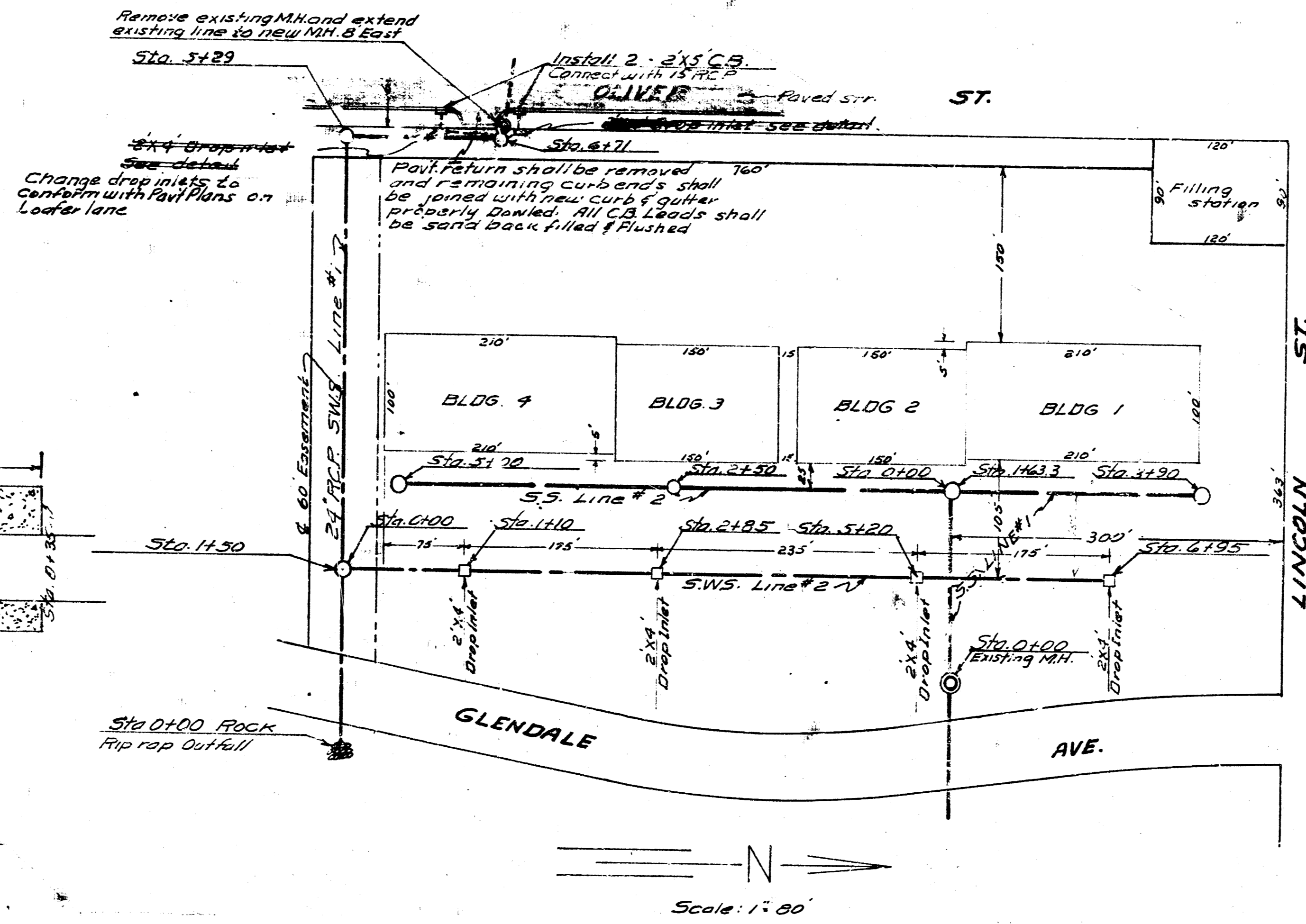
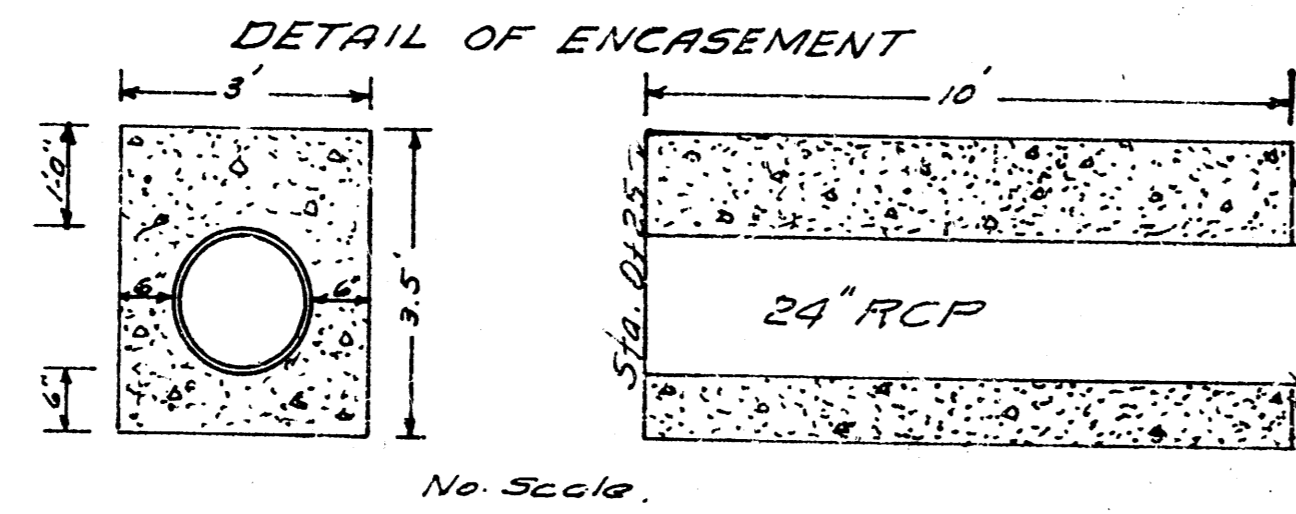
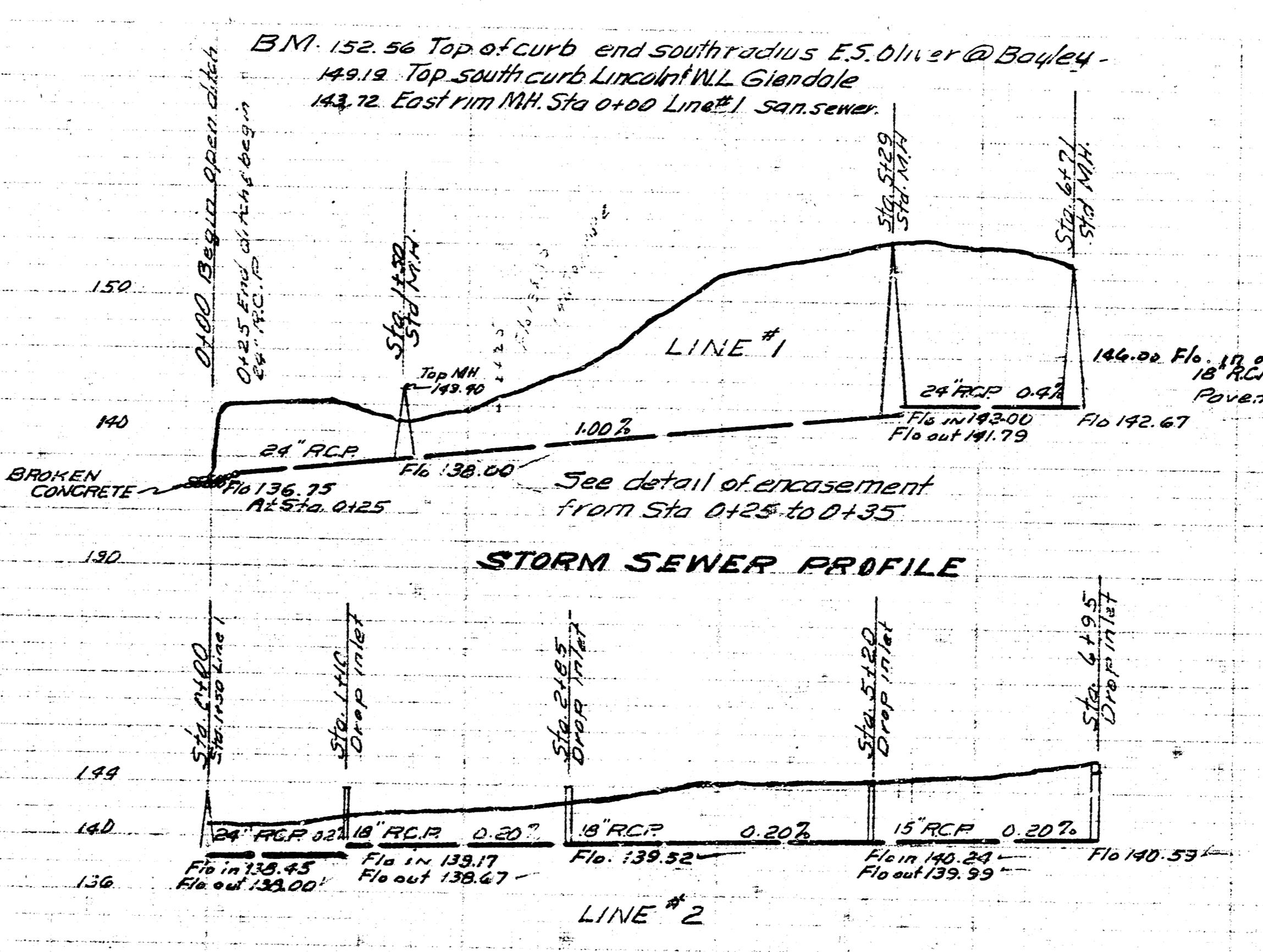
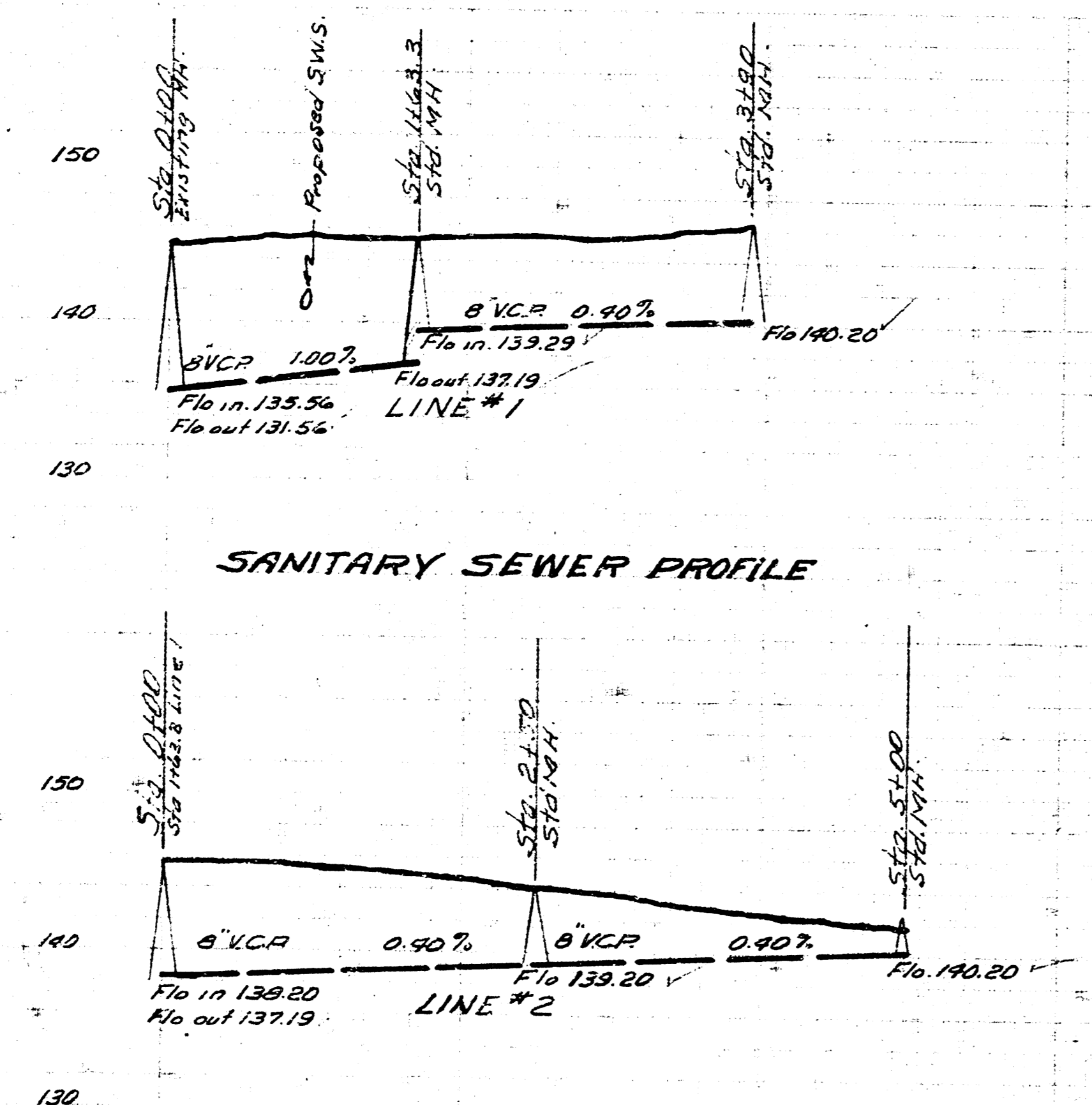


NOTE: Detailed plans on City Std. Drop inlet may be had upon request. Catch basins on Oliver shall be built to City Standards.



STANDARD
This shall be the standard for the construction of the drop inlets and frames. The frames shall be made of cast iron or steel and shall be painted with a rust preventive. The frames shall be set in concrete and shall be finished with a smooth surface. The frames shall be set in concrete and shall be finished with a smooth surface.

Date: 6-24-54
Designed by: MacLean
Checked by: Beck
H-66



PRIVATE SANITARY & STORM SEWERS
OLIVER TO GLENDALE - LINCOLN 880.50.
BUILDERS INC.
CITY OF WICHITA KANSAS
B.E. SMITH CITY ENGINEER