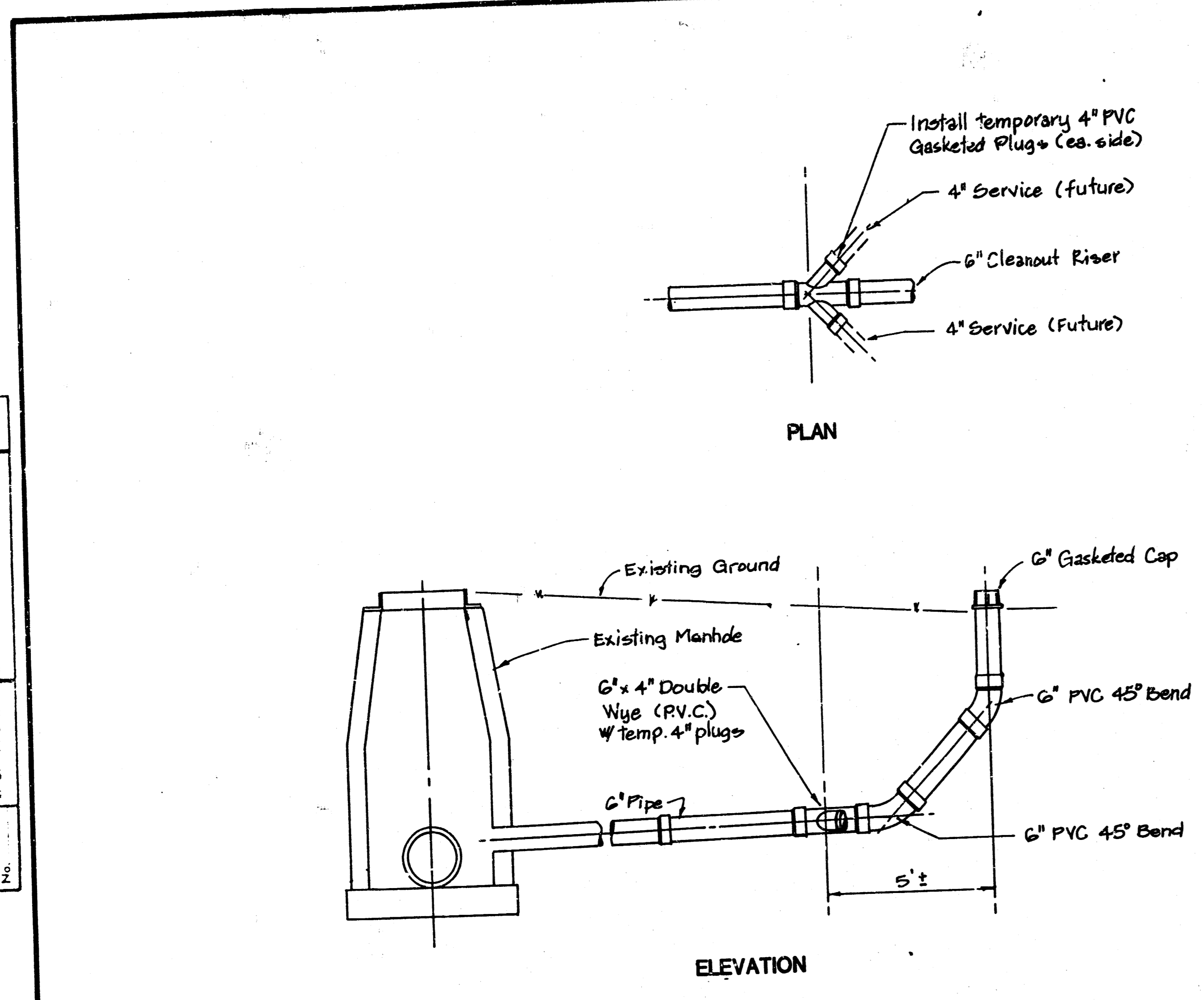
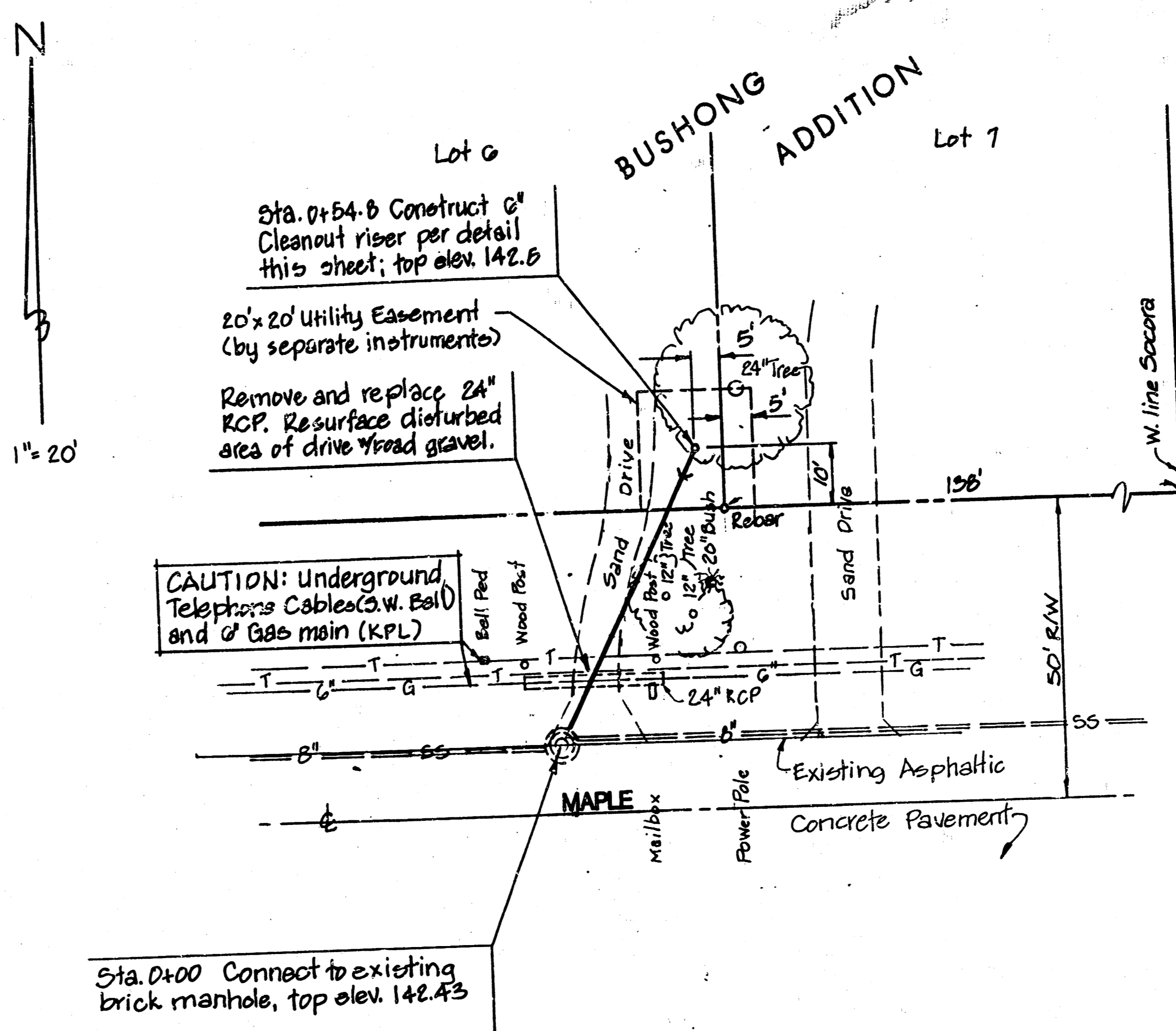


DATE	
BY	
REVISION	
NO.	
DESCRIPTION	
DATE	
BY	
REVISION	
NO.	
DESCRIPTION	
DATE	
BY	
REVISION	
NO.	
DESCRIPTION	
DATE	
BY	
REVISION	
NO.	
DESCRIPTION	

DATE	
BY	
REVISION	
NO.	
DESCRIPTION	
DATE	
BY	
REVISION	
NO.	
DESCRIPTION	
DATE	
BY	
REVISION	
NO.	
DESCRIPTION	



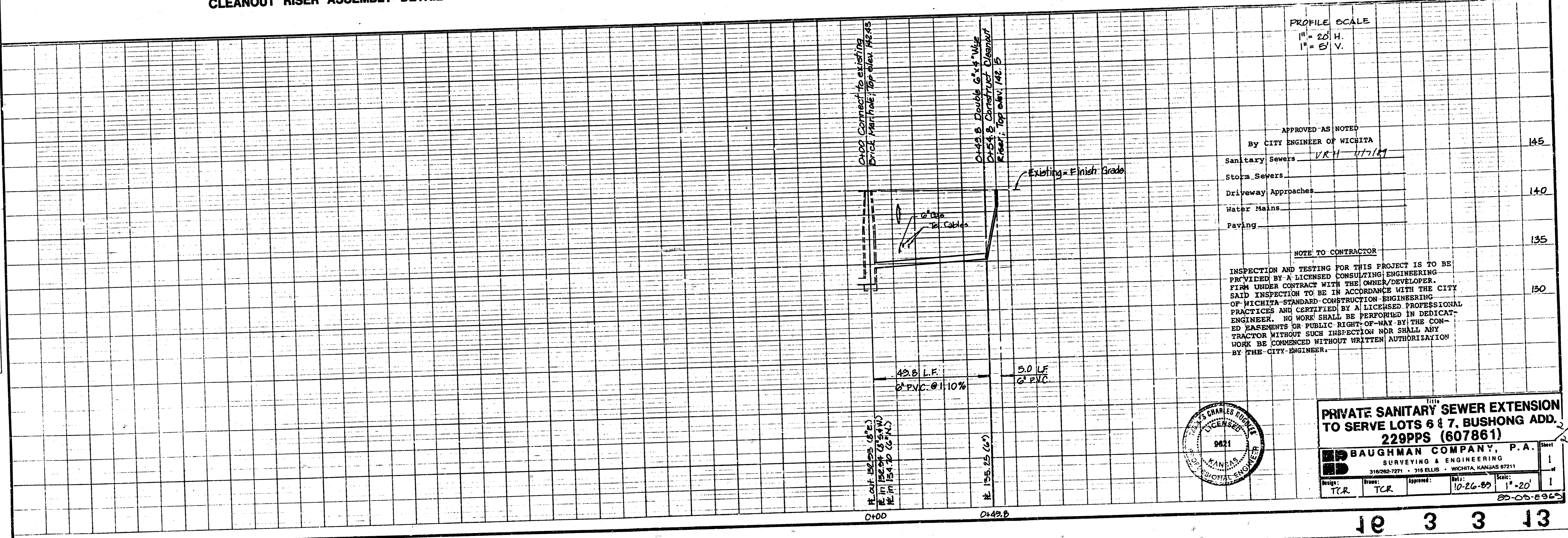
CLEANOUT RISER ASSEMBLY DETAIL



LOCATION MAP

GENERAL NOTES

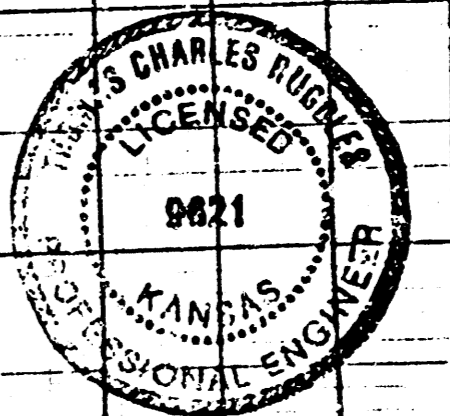
- Contractor will be required to provide a minimum advance notice of twenty-four (24) hours to utility companies prior to starting any excavation as follows:
 Kansas One-Call 1-800-344-7233
 The Contractor must notify the following in case of an emergency:
 Cablevision 262-4270 or 263-2061
 K.P. & L. Gas Service Company 263-7511
 Kansas Gas & Electric 264-1141
 Arkla Gas Company 942-8350 or 263-8161
 Southwest Bell Telephone Company 1-571-2611
 City of Wichita Water Department 268-4908
 City of Wichita Sewer Maintenance 268-4071
- The Contractor shall give all property owners and/or tenants of developed property directly abutting the construction of this project a minimum of ten (10) days advance notice prior to start of construction.
- The Contractor shall be responsible for preserving property irons. The Contractor will be required to re-establish any property irons which are damaged or destroyed by his construction operations. Such irons shall be re-established by a licensed land surveyor in accordance with state law.
- Traffic will not be affected by construction on this project.



PROFILE SCALE
 1" = 20' H.
 1" = 5' V.

APPROVED AS NOTED	
By CITY ENGINEER OF WICHITA	145
Sanitary Sewers	✓ R/H 1/17/87
Storm Sewers	
Driveway Approaches	140
Water Mains	
Paving	135

NOTE TO CONTRACTOR
 INSPECTION AND TESTING FOR THIS PROJECT IS TO BE PROVIDED BY A LICENSED CONSULTING ENGINEERING FIRM UNDER CONTRACT WITH THE OWNER/DEVELOPER. SAID INSPECTION TO BE IN ACCORDANCE WITH THE CITY OF WICHITA STANDARD CONSTRUCTION ENGINEERING PRACTICES AND CERTIFIED BY A LICENSED PROFESSIONAL ENGINEER. NO WORK SHALL BE PERFORMED IN DEDICATED EASEMENTS OR PUBLIC RIGHT-OF-WAY BY THE CONTRACTOR WITHOUT SUCH INSPECTION NOR SHALL ANY WORK BE COMMENCED WITHOUT WRITTEN AUTHORIZATION BY THE CITY ENGINEER.



PRIVATE SANITARY SEWER EXTENSION TO SERVE LOTS 6 & 7, BUSHONG ADD., 229PPS (607861)

BAUGHMAN COMPANY, P.A.
 SURVEYING & ENGINEERING
 310/262-7271 115 ELLIS - WICHITA, KANSAS 67211

Scale	1" = 20'
Project	TRR
Drawn	TCR
Approved	
Date	10-26-89
Sheet	1

10 3 3 13

FILMED FROM THE BEST AVAILABLE COPY